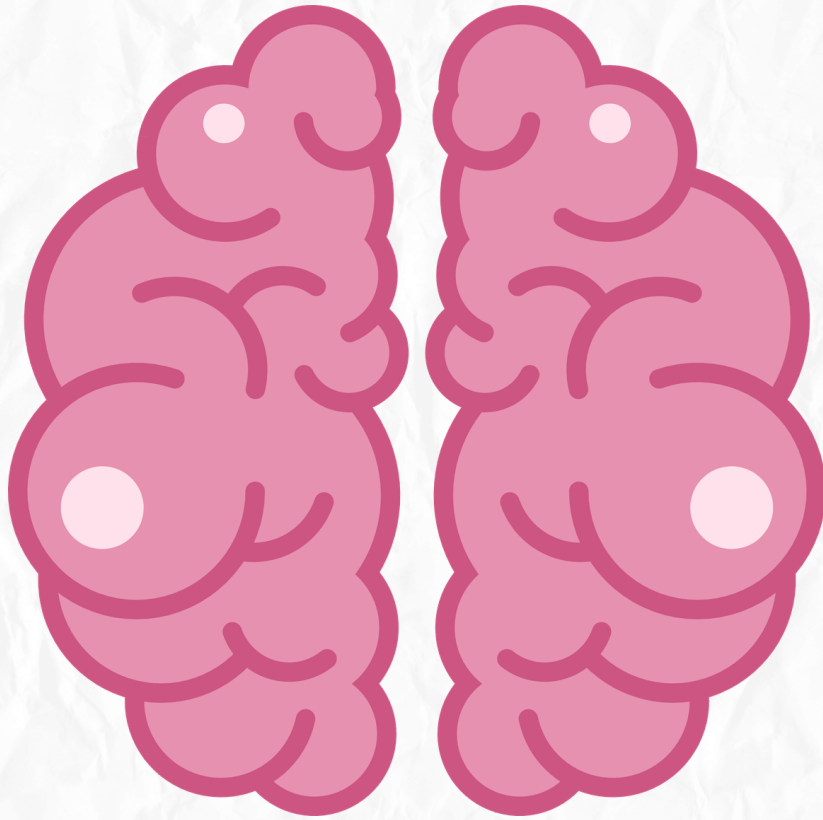


Neuroanatomy

Quiz time



Lec 10



****1. The midbrain is divided into a posterior part called the tectum and an anterior part by the:****

- A) Cerebral aqueduct
- B) Substantia nigra
- C) Red nucleus
- D) Crus cerebri

**** Answer: A) Cerebral aqueduct ****

****2. At which level of the midbrain is the "Superior Colliculus" located? ****

- A) Level of the pons
- B) Level of the inferior colliculus
- C) Level of the superior colliculus
- D) Level of the medulla

**** Answer: C) Level of the superior colliculus ****

****3. The origin of the Oculomotor nerve (III) is located at the level of: ****

- A) Inferior colliculus
- B) Superior colliculus
- C) Red nucleus
- D) Substantia nigra

**** Answer: B) Superior colliculus ****

****4. Which cranial nerve is the only one that emerges from the posterior (back) aspect of the brainstem? ****

- A) Oculomotor nerve (III)
- B) Trigeminal nerve (V)
- C) Trochlear nerve (IV)
- D) Abducent nerve (VI)

**** Answer: C) Trochlear nerve (IV) ****

****5. The "Substantia Nigra" is a mass of gray matter that separates:****

- A) The tectum from the tegmentum
- B) The tegmentum from the crus cerebri
- C) The two cerebral hemispheres
- D) The red nucleus from the oculomotor nucleus

**** Answer: B) The tegmentum from the crus cerebri****

****6. Which muscle is NOT supplied by the Oculomotor nerve (III)?****

- A) Superior rectus
- B) Inferior oblique
- C) Superior oblique
- D) Medial rectus

**** Answer: C) Superior oblique (Supplied by the Trochlear nerve)****

****7. The "Edinger-Westphal nucleus" provides parasympathetic fibers for:****

- A) Lateral rectus muscle
- B) Constrictor pupillae and ciliary muscles
- C) Superior oblique muscle
- D) Lacrimal gland

**** Answer: B) Constrictor pupillae and ciliary muscles****

****8. The Trochlear nerve (IV) supplies which of the following muscles?**

- A) Lateral rectus
- B) Superior oblique
- C) Inferior rectus
- D) Levator palpebrae superioris

**** Answer: B) Superior oblique***

****9. Where does the Oculomotor nerve (III) exit the skull to enter the orbit?***

- A) Foramen rotundum
- B) Foramen ovale
- C) Superior orbital fissure
- D) Optic canal

**** Answer: C) Superior orbital fissure****

****10. The "Red Nucleus" is a prominent structure found in the tegmentum at the level of:***

- A) Inferior colliculus
- B) Superior colliculus
- C) Optic chiasm
- D) Pons

**** Answer: B) Superior colliculus****

طب الأسنان

سُبْحَانَكَ اللَّهُمَّ وَبِحَمْدِكَ ، أَشْهَدُ أَنْ لَا
إِلَهَ إِلَّا أَنْتَ ، أَسْتَغْفِرُكَ وَأَتُوبُ إِلَيْكَ .