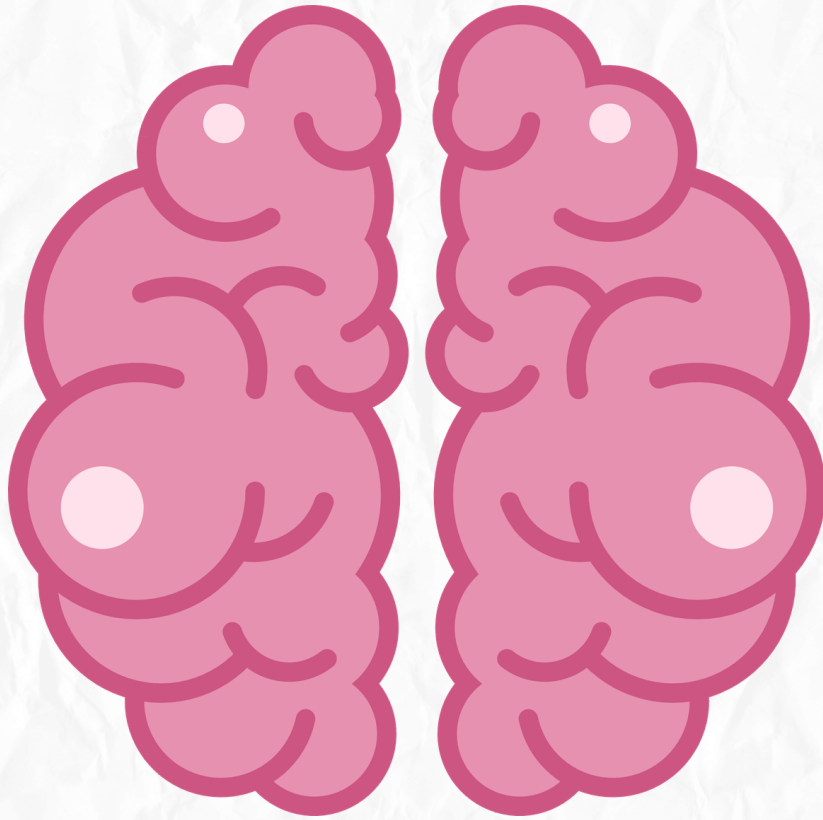


Neuroanatomy

Quiz time



Lec 8



1. The Accessory nerve (XI) has a double origin, consisting of:**

- A) Cranial and Cervical divisions
- B) Cranial and Spinal divisions
- C) Spinal and Medullary divisions
- D) Brainstem and Sacral divisions

** Answer: B) Cranial and Spinal divisions**

2. The cranial root of the accessory nerve arises from which nucleus?

- A) Vestibular nucleus
- B) Nucleus ambiguus
- C) Hypoglossal nucleus
- D) Edinger-Westphal nucleus

** Answer: B) Nucleus ambiguus**

**3. The spinal root of the accessory nerve originates from the ventral horn of which cervical segments?*

- A) C1 - C3
- B) C5 - T1
- C) C1 - C6
- D) C7 - T2

** Answer: C) C1 - C6**

**4. Which muscle is supplied by the spinal division of the accessory nerve?*

- A) Genioglossus
- B) Sternocleidomastoid
- C) Palatoglossus
- D) Mylohyoid

** Answer: B) Sternocleidomastoid (It also supplies the Trapezius)**

**5. The cranial root of the accessory nerve joins which cranial nerve to help it?*

**

- A) Glossopharyngeal (IX)
- B) Vagus (X)
- C) Hypoglossal (XII)
- D) Facial (VII)

** Answer: B) Vagus (X)**

****6. Through which opening does the accessory nerve exit the skull?***

- A) Foramen magnum
- B) Foramen ovale
- C) Jugular foramen
- D) Hypoglossal canal

****Answer: C) Jugular foramen****

****7. The Hypoglossal nerve (XII) supplies all extrinsic and intrinsic muscles of the tongue EXCEPT:***

- A) Styloglossus
- B) Hyoglossus
- C) Palatoglossus
- D) Genioglossus

****Answer: C) Palatoglossus (Supplied by the cranial root of accessory nerve via Vagus)****

****8. Through which canal does the Hypoglossal nerve (XII) leave the skull?***

- A) Carotid canal
- B) Anterior condylar canal (Hypoglossal canal)
- C) Internal auditory meatus
- D) Foramen rotundum

****Answer: B) Anterior condylar canal (Hypoglossal canal)****

****9. The "Ansa cervicalis" is formed by the union of descendens hypoglossi (C1) and:***

- A) Descendens cervicalis (C2 & 3)
- B) Phrenic nerve
- C) Vagus nerve
- D) Spinal accessory nerve

****Answer: A) Descendens cervicalis (C2 & 3)****

****10. Which fibers from the C1 segment travel with the hypoglossal nerve to supply the infrahyoid muscles?***

- A) Muscular branches
- B) Meningeal branches
- C) Nerve to thyrohyoid and geniohyoid
- D) Superior laryngeal nerve

****Answer: C) Nerve to thyrohyoid and geniohyoid***

ما لَمْ يَسَّ الْقُرْآنَ
قَلْبًا ضَيِّقًا إِلَّا اتَّسَعَ.