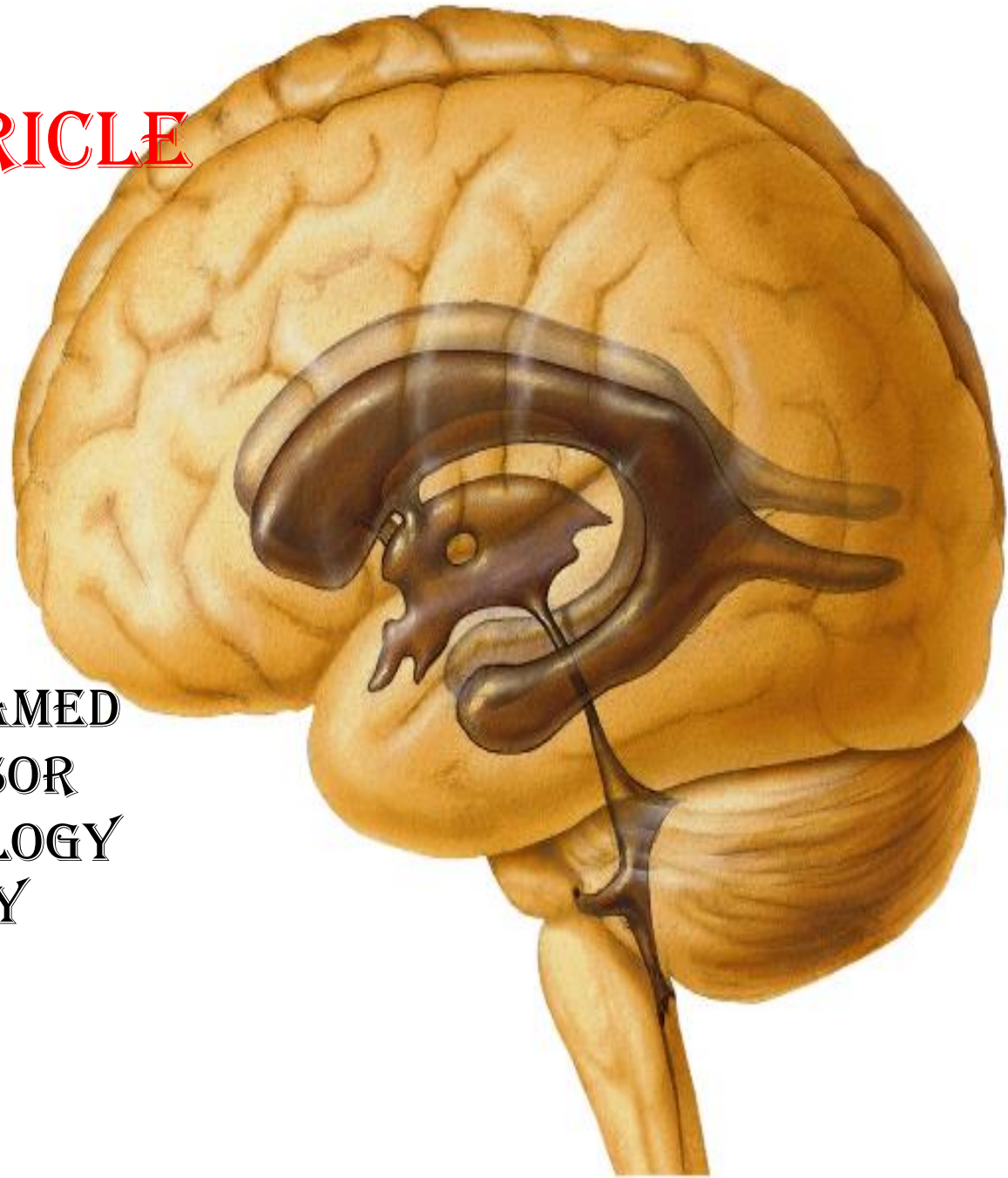
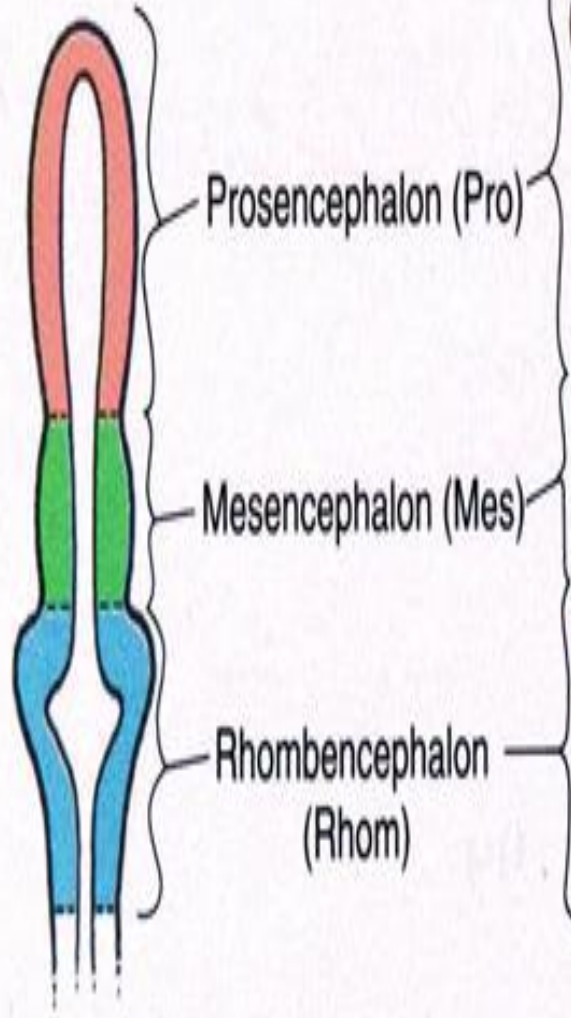
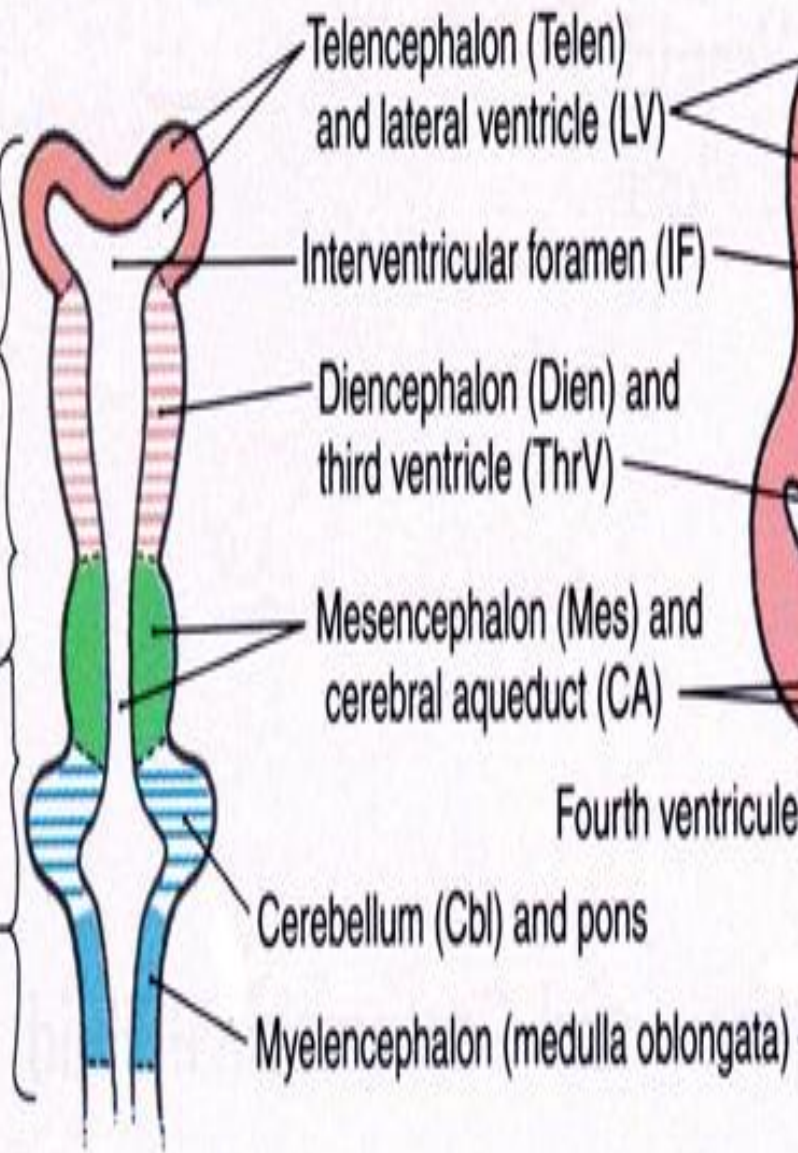
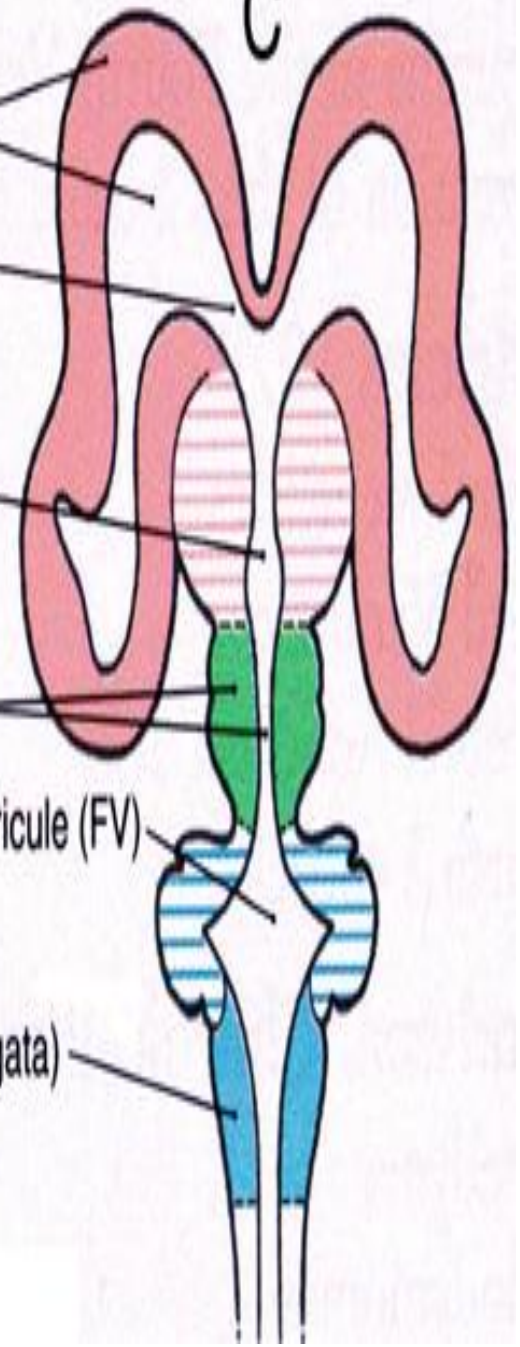


LATERAL VENTRICLE

BY

DR ABULMAATY MOHAMED
ASSISTANT PROFESSOR
ANATOMY & EMBRYOLOGY
MUTAH UNIVERSITY



A**B****C**

Telencephalon (Telen) and lateral ventricle (LV)

Interventricular foramen (IF)

Diencephalon (Dien) and third ventricle (ThrV)

Mesencephalon (Mes) and cerebral aqueduct (CA)

Fourth ventricle (FV)

Cerebellum (Cbl) and pons

Myelencephalon (medulla oblongata)

Prosencephalon (Pro)

Mesencephalon (Mes)

Rhombencephalon (Rhom)

LATERAL VENTRICLE

Def.: cavity of cerebral hemisphere. It is lined by ependyma

Communication:

with 3rd ventricle by the interventricular foramen of Monro

shape & part: C- shape has

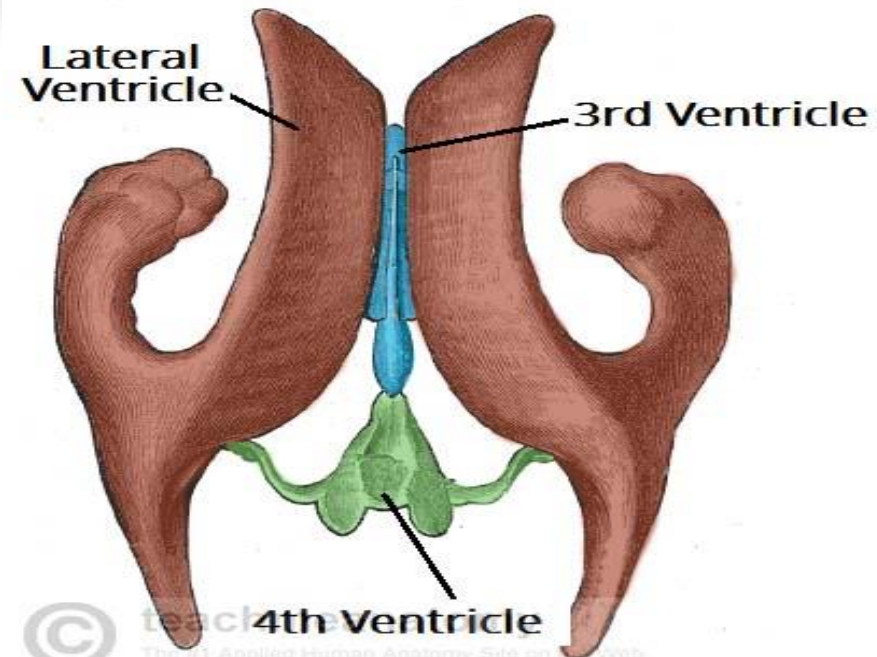
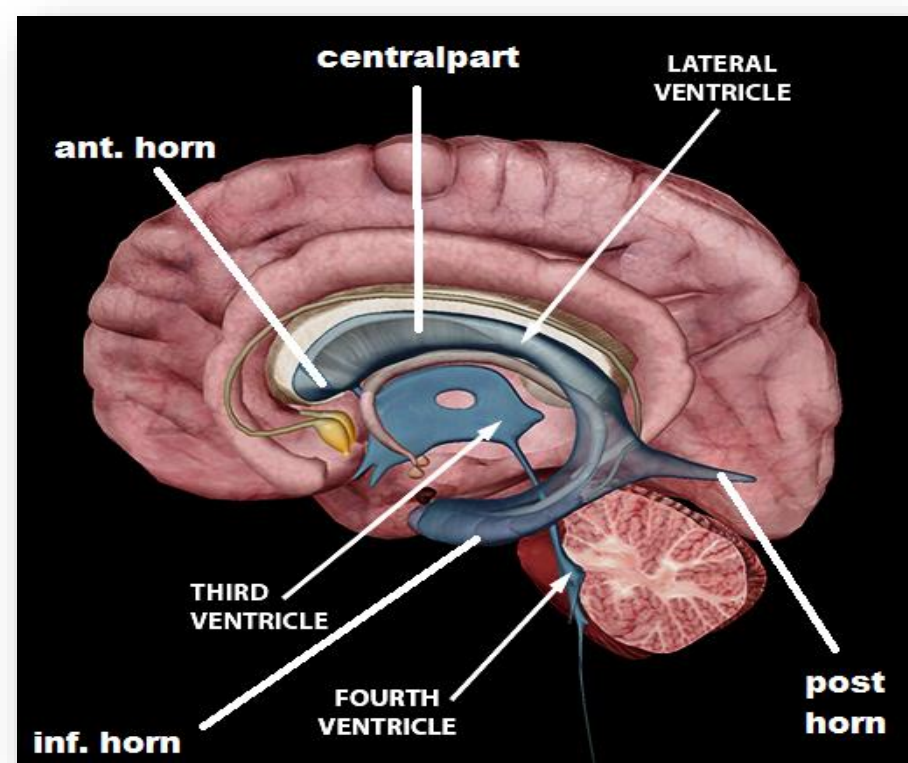
ant. horn :-cavity of frontal lobe

extends from interventricular foramen forward to genu of CC

central part(body):cavity of parietal lobe. extends from interventricular foramen to splenium

post. horn: cavity of occipital lobe extends from splenium backward into occipital lobe

Infer. horn:-cavity of temporal lobe extends from splenium, downward behind thalamus then forward in temporal lobe to end at uncus.

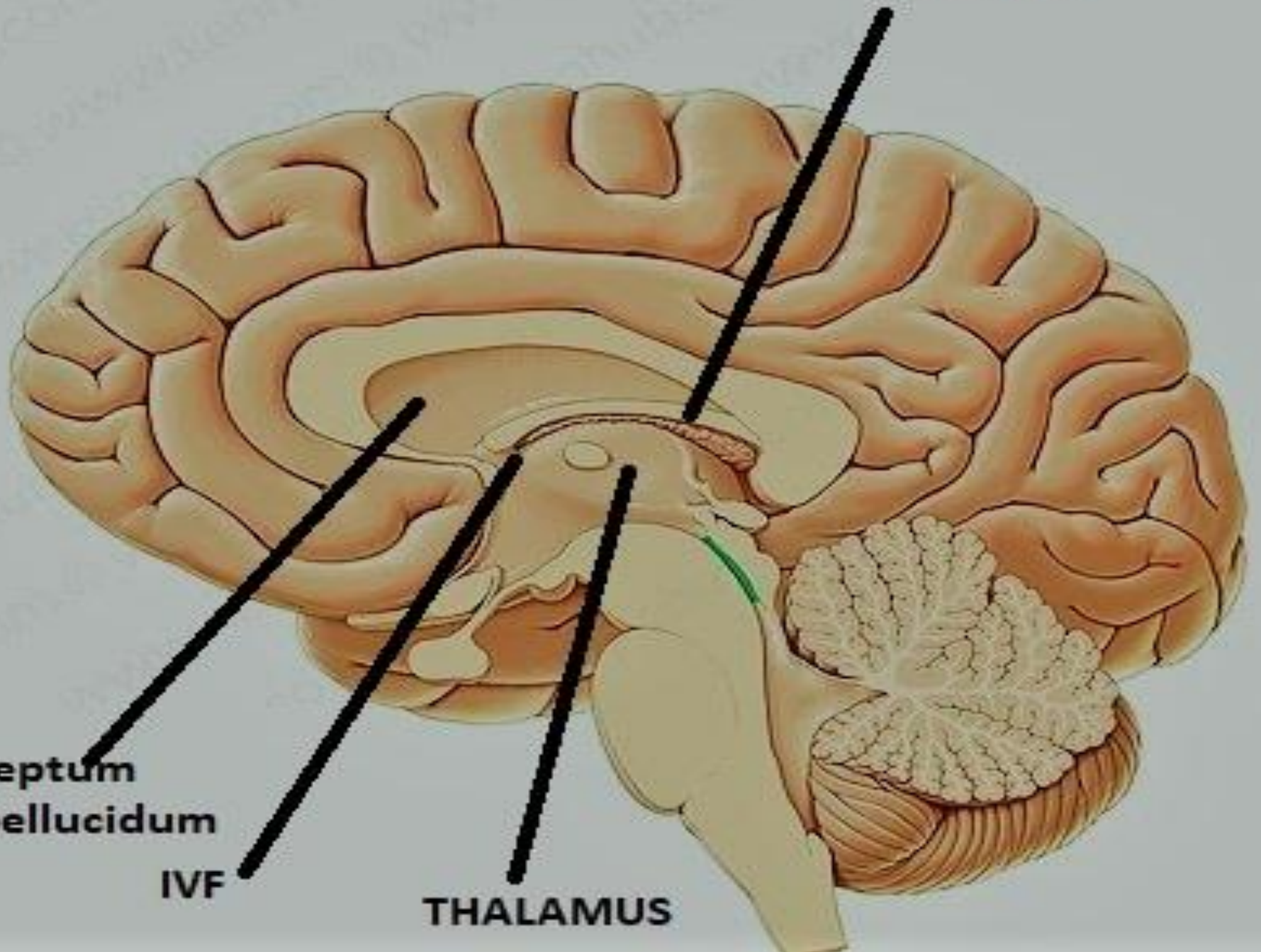


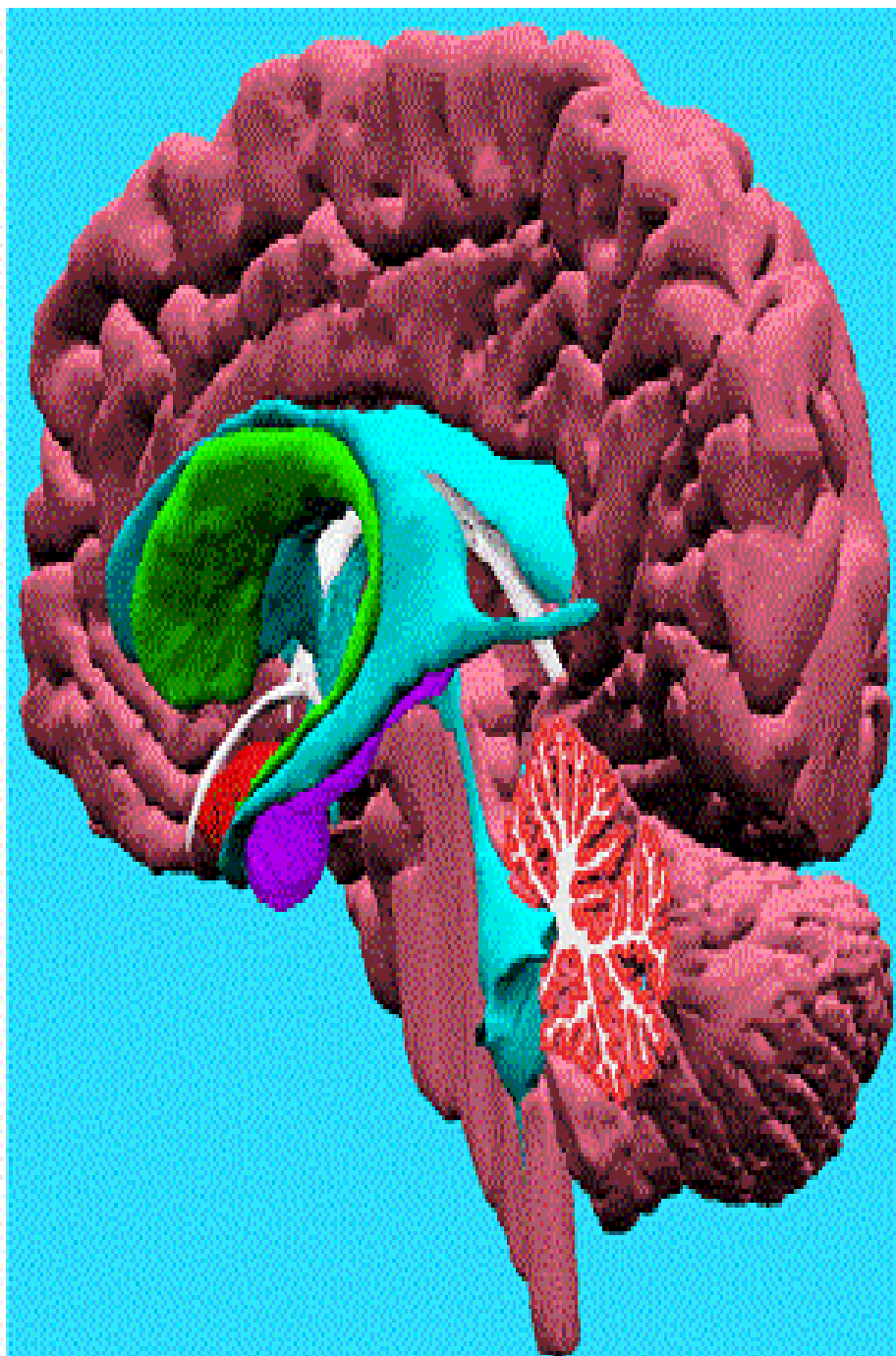
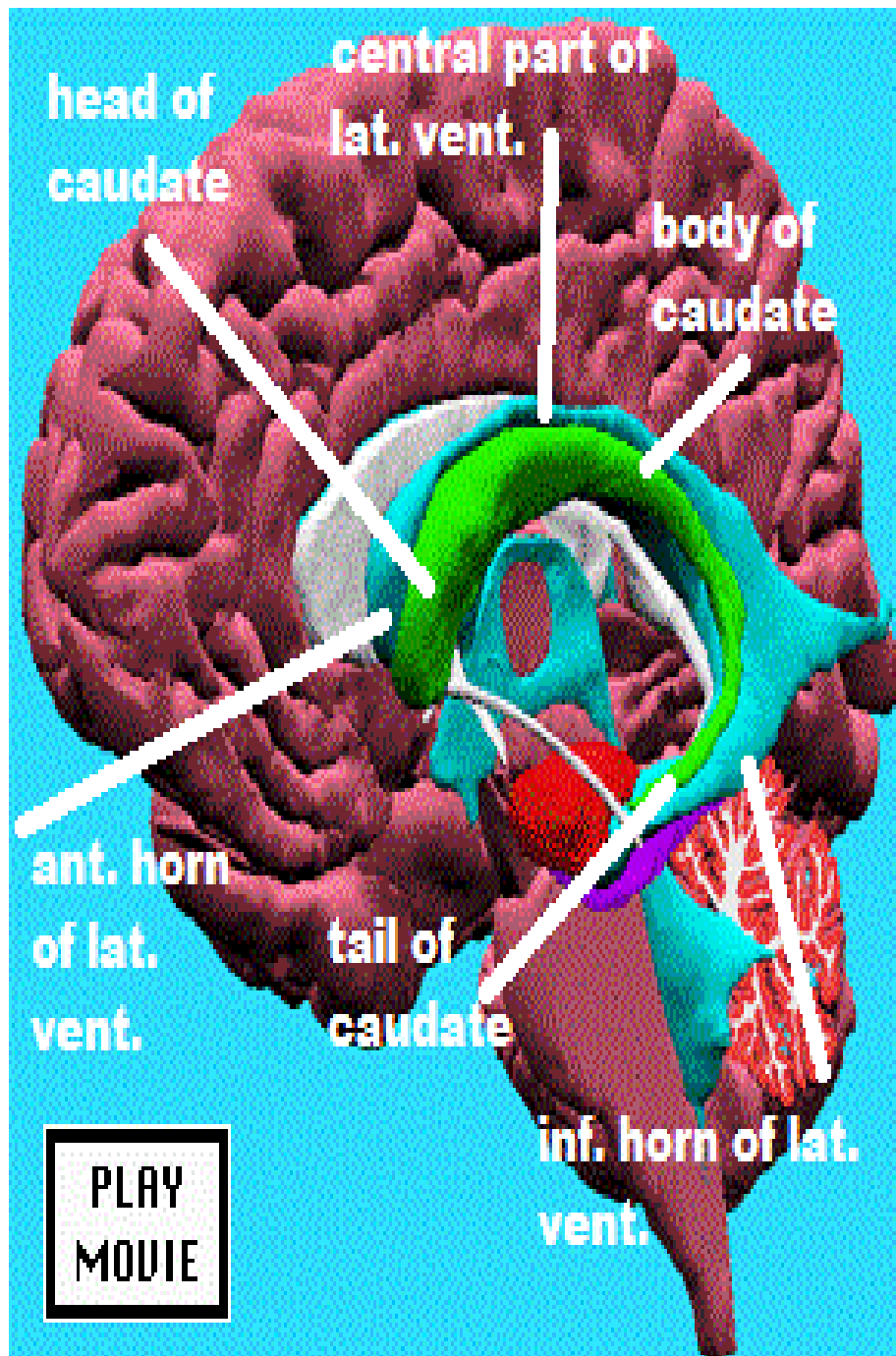
FORNIX

**septum
pellucidum**

IVF

THALAMUS





LATERAL VENTRICLE

boundaries, walls:

ant. horn: in ant. coronal section, it appear triangular

roof: trunk of corpus callosum

medial wall: septum pellucidum

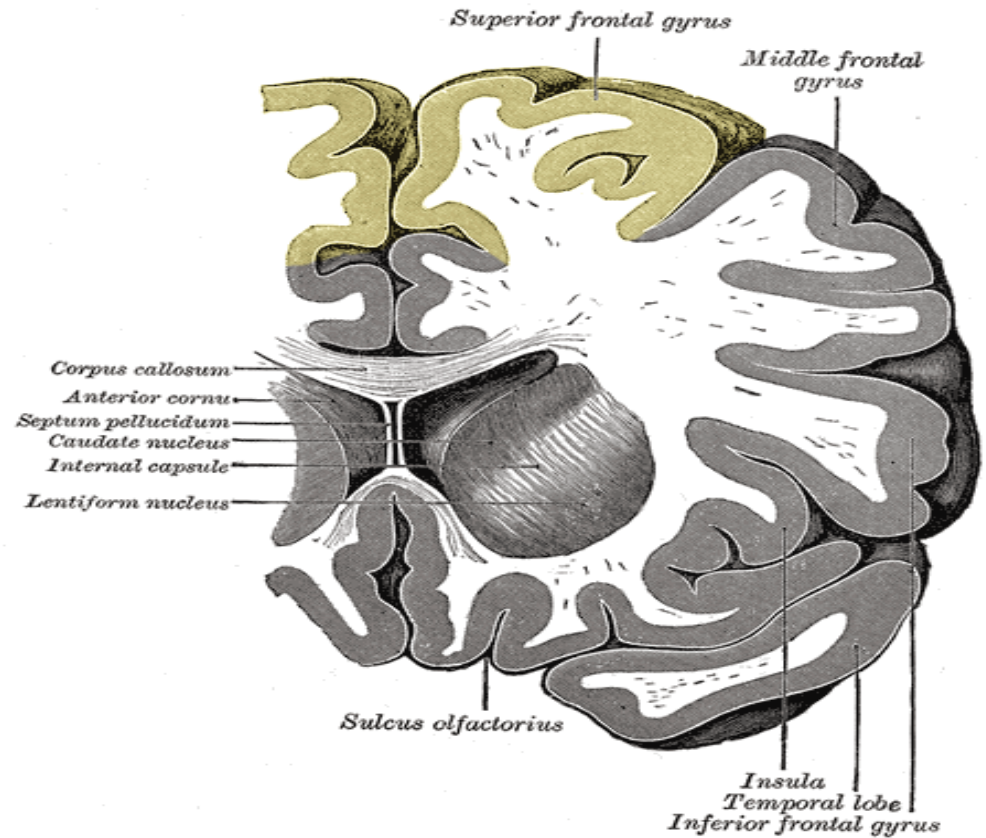
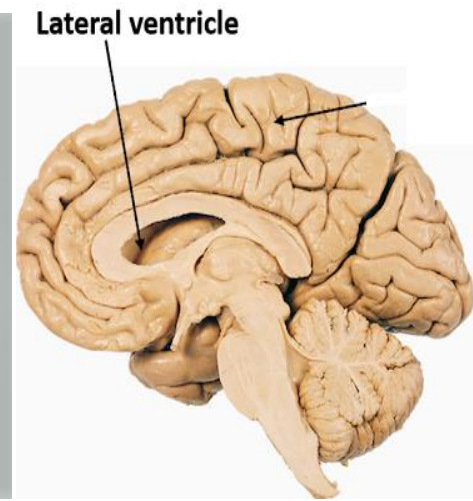
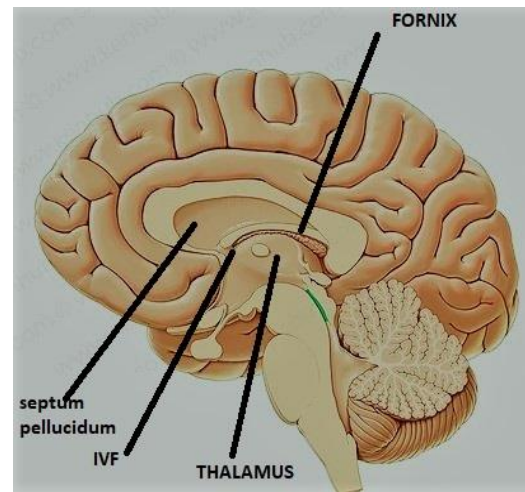
inferolateral wall:

head of caudate

rostrum of corpus callosum.

ant. end: genu of corpus callosum.

N.B: identified by: U shaped mass of striatum.



LATERAL VENTRICLE

boundaries, walls:

Central part: in middle coronal section, it appear triangular

roof: trunk of corpus callosum.

medial w:

septum pellucidum (above)

body of fornix. (below)

Floor :body of caudate

stria terminalis(medial to caudate)

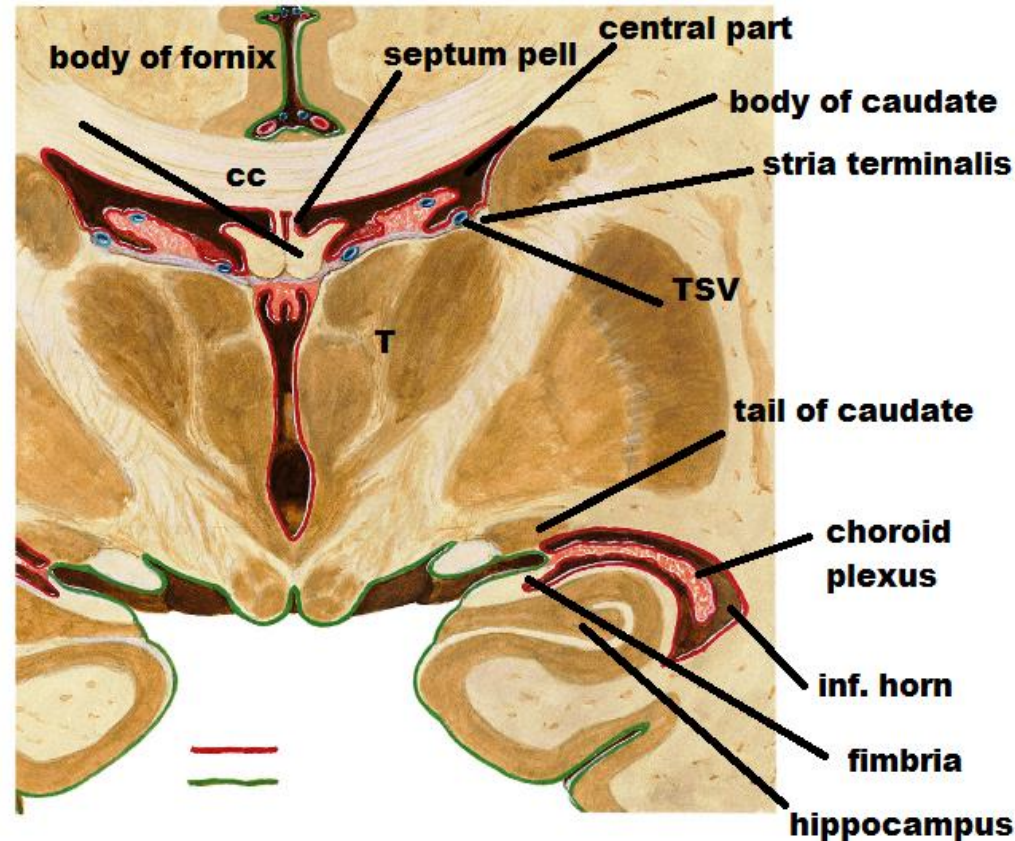
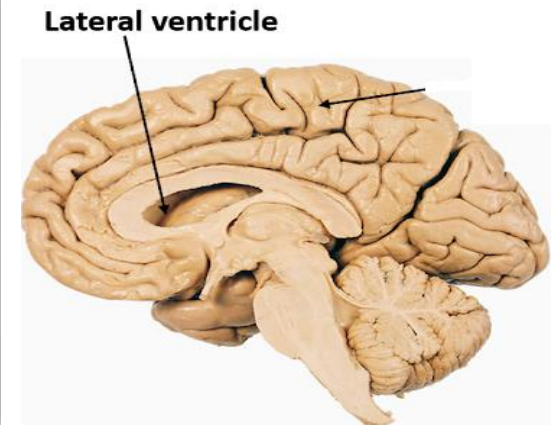
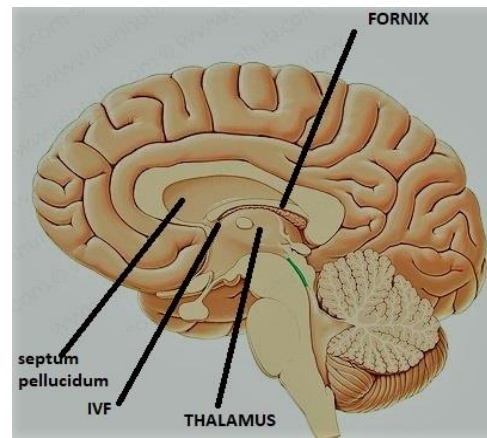
thalamo striate v.

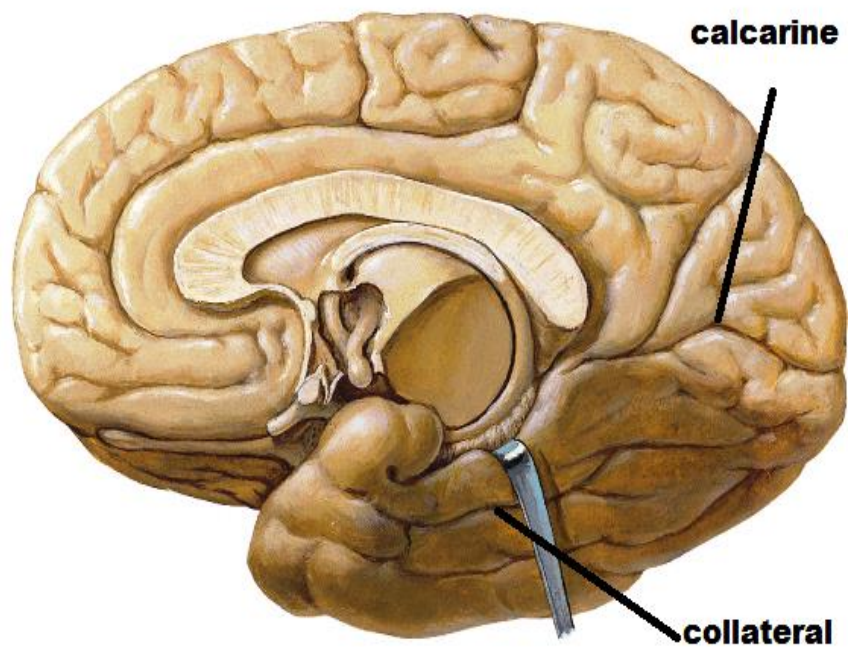
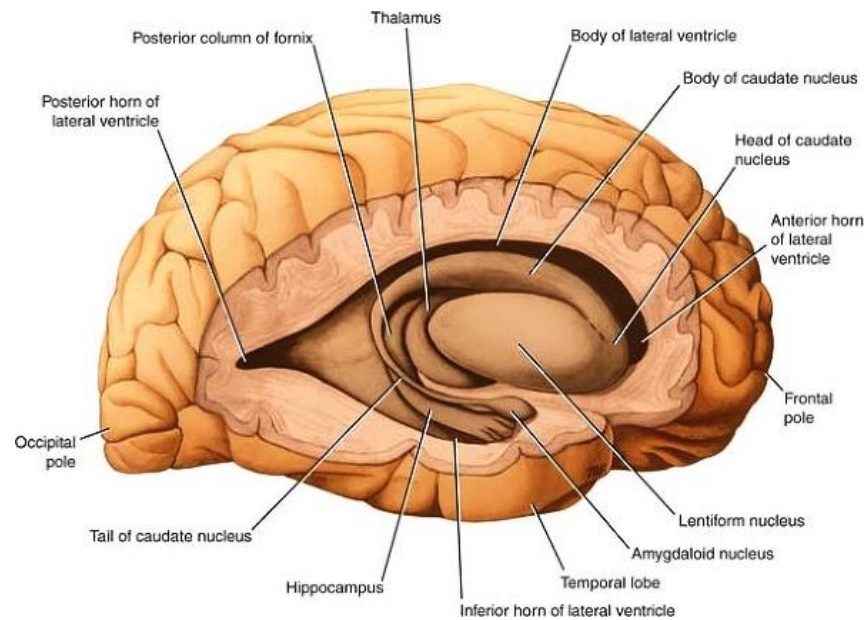
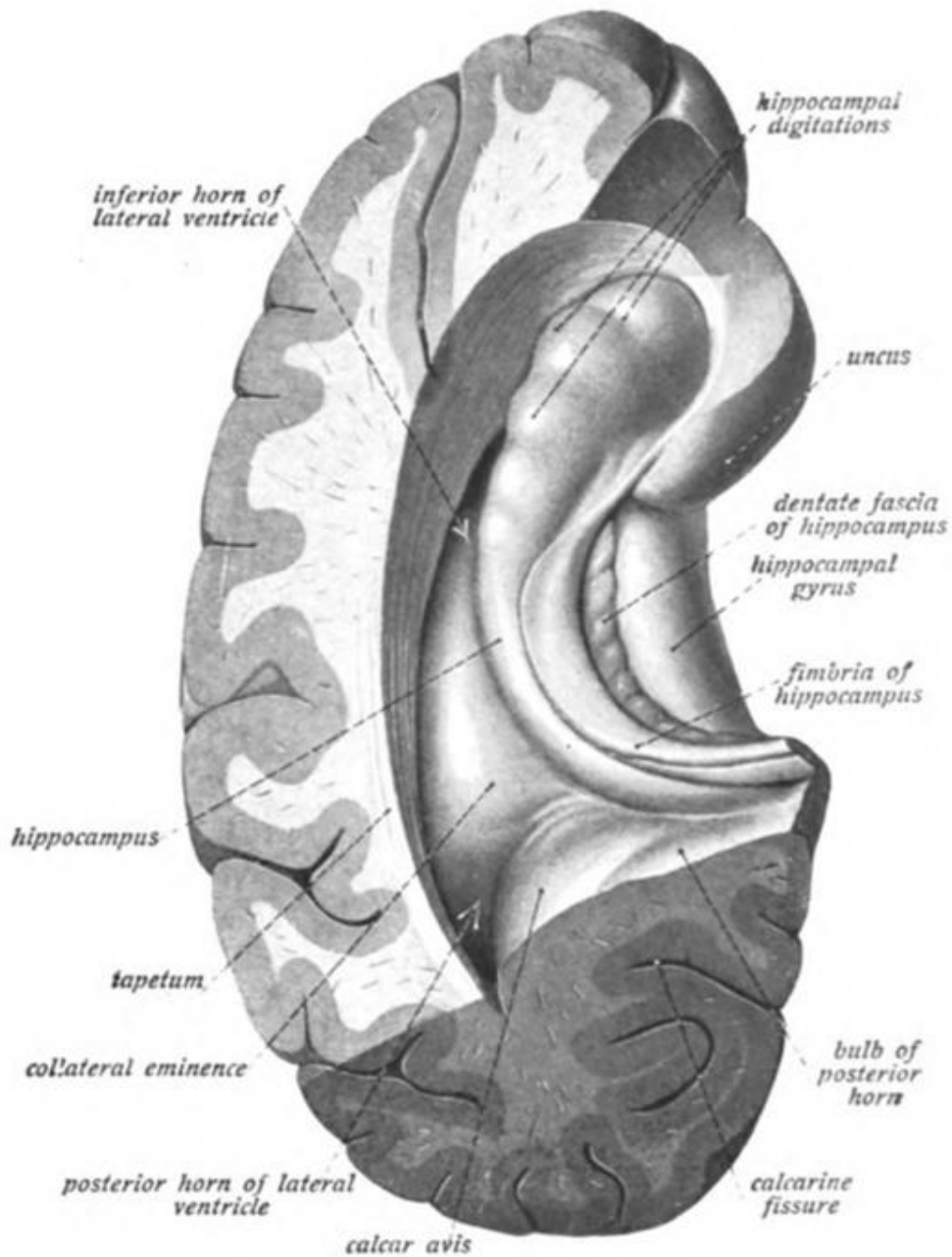
thalamus

choroid plexus in choroid fissure

() fornix & thalamus

N.B: identified by: thalamus





LATERAL VENTRICLE

boundaries, walls:

inferior horn:

Roof stria terminalis

tail of caudate

lateral w: tapetum of trunk of CC

Floor

collateral eminence produced

by collateral sulcus

hippocampal gyrus

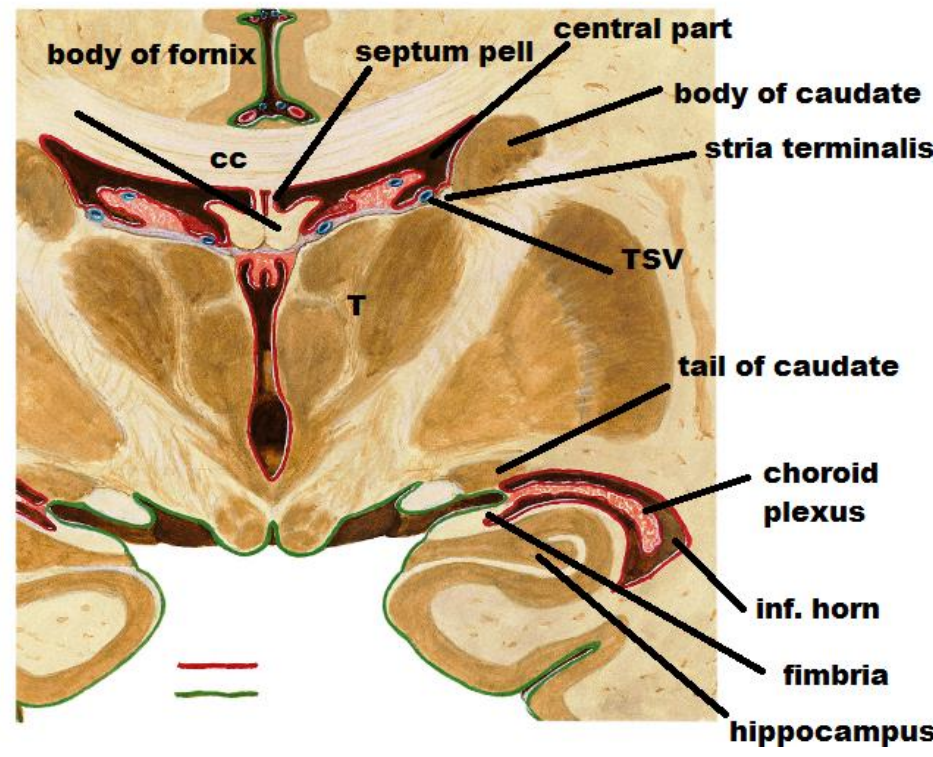
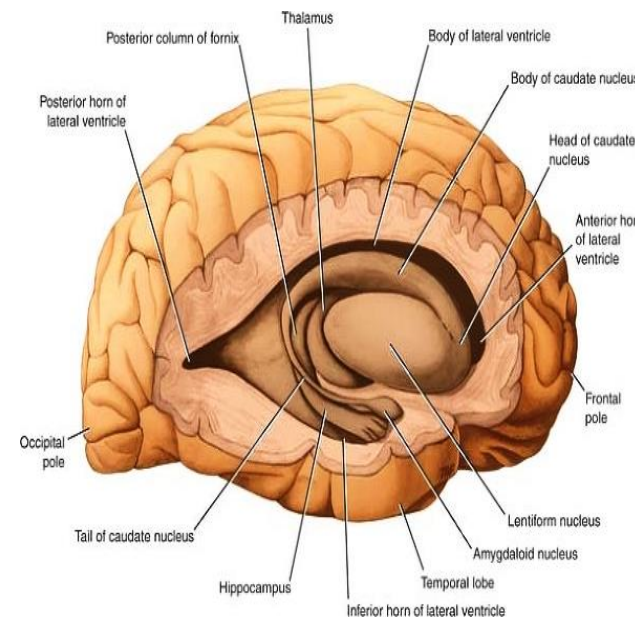
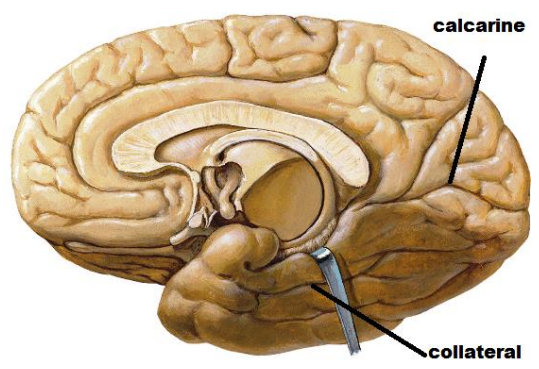
fimbria of hippocampus

medial w

choroid plexus in choroid fissure

between stria terminalis and

fimbria



LATERAL VENTRICLE

boundaries, walls:

post. horn:

Roof tapetum

lateral w

tapetum of post. Horn

optic radiation

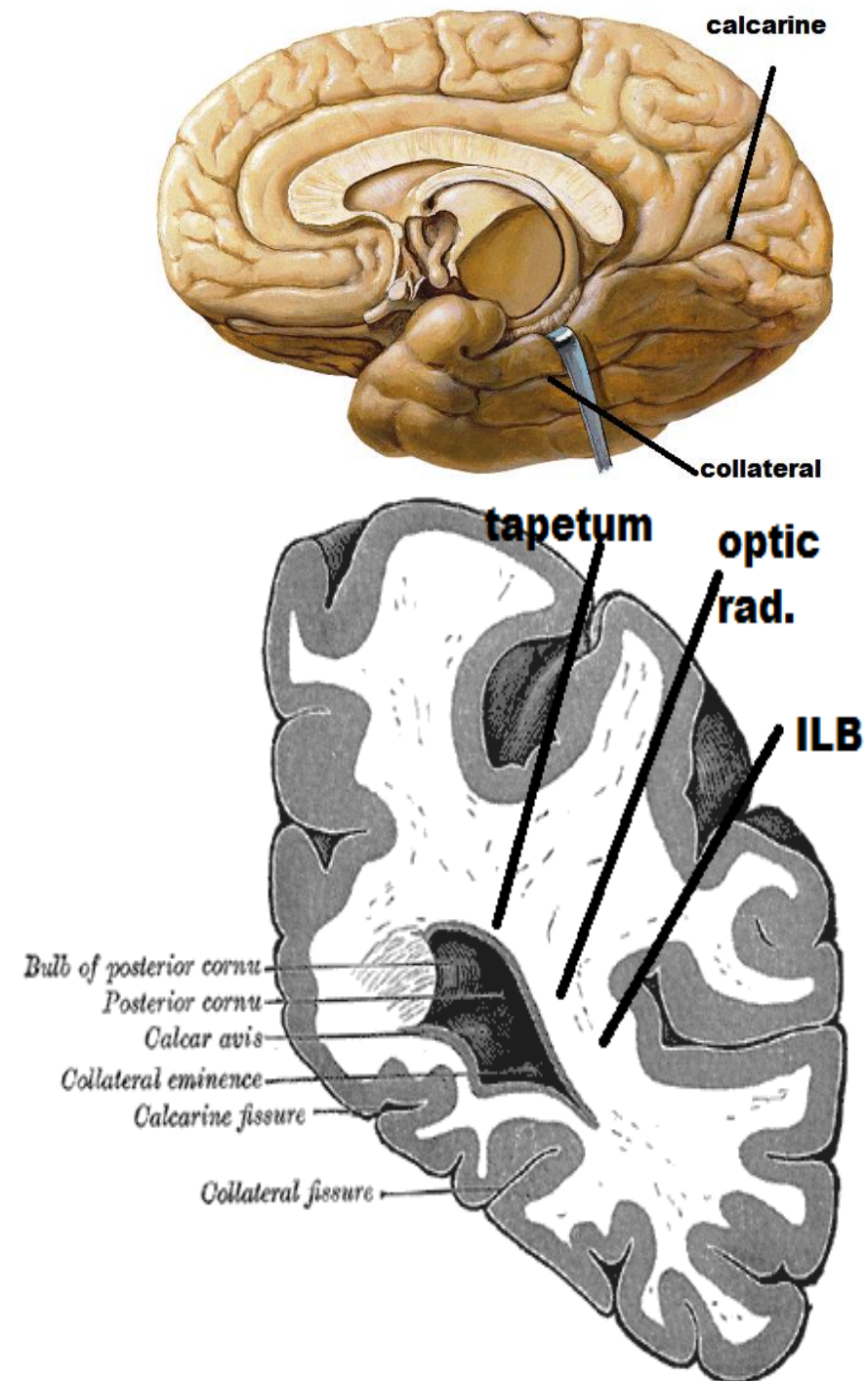
inferior longitudinal bundle

medial w collateral eminence

calcar avis

bulb of splenium by forceps
major

N.B: identified by: absence of
grey matter from walls:

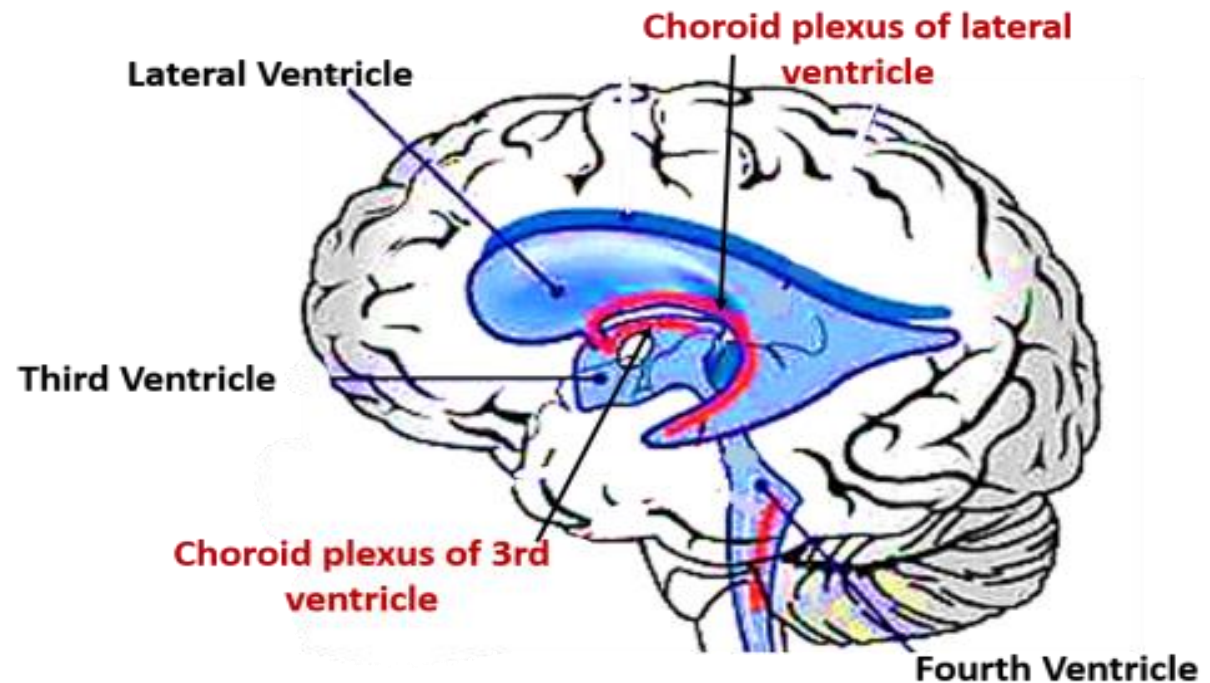
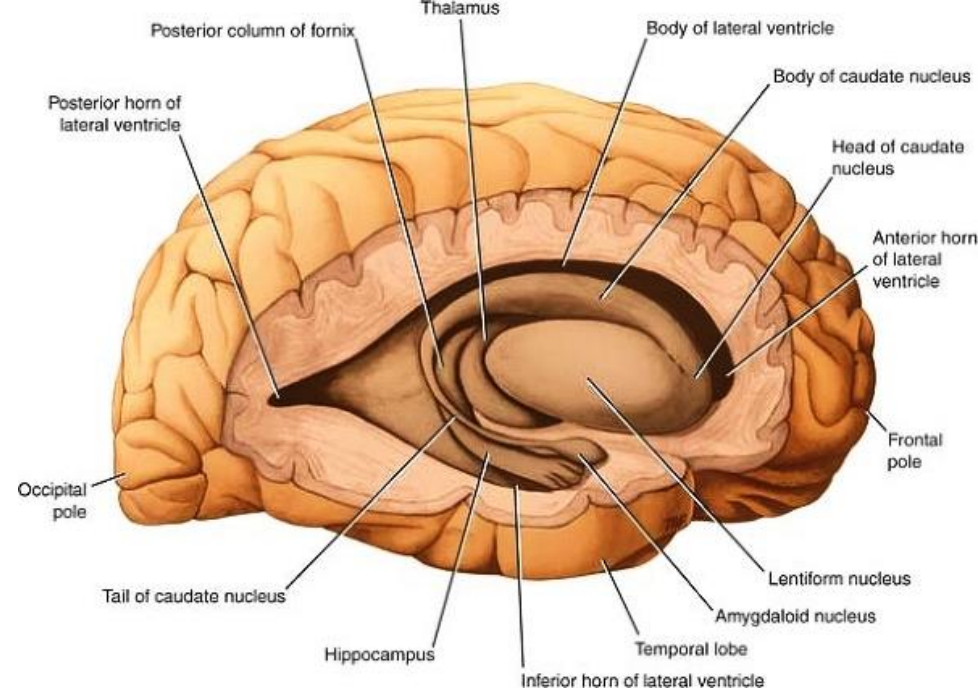


LATERAL VENTRICLE

trigone:

-wide area () central part, inferior & post horns.

-It Contain glomus choroideum(largest tuft of choroid plexus)



LATERAL VENTRICLE

Choroid fissure

shape & site: c shaped, on the medial aspect of central part & inferior horn

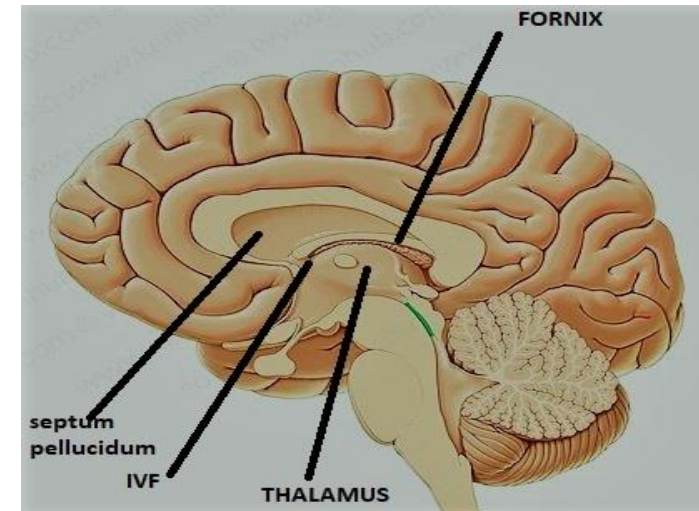
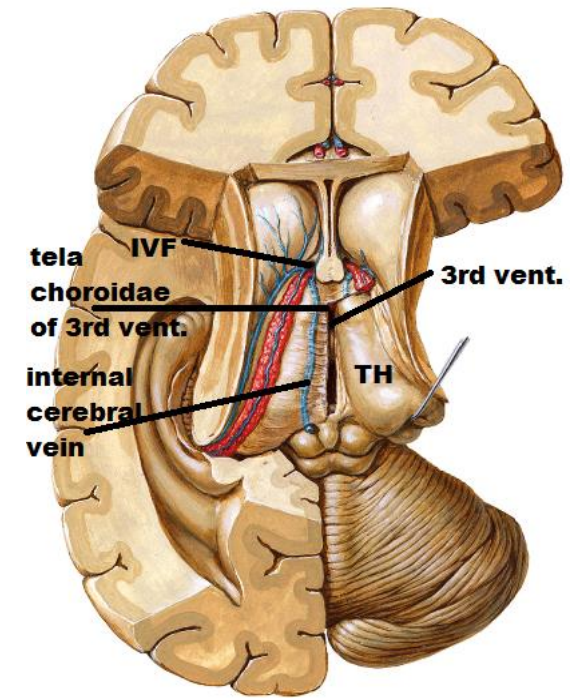
content : tela choroidae of lat. vent.

boundries:

-outer concave margin :

fimbria & fornix

-inner convex margin: thalamus



THANK