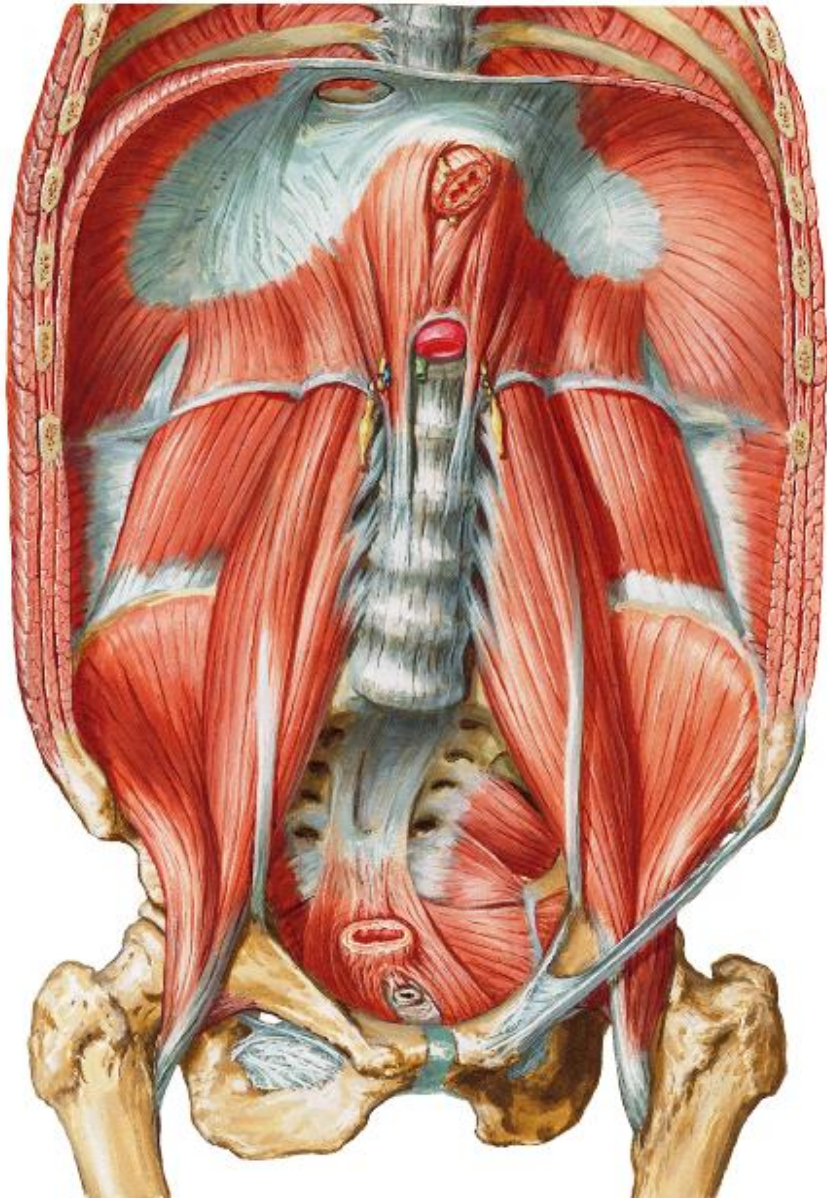


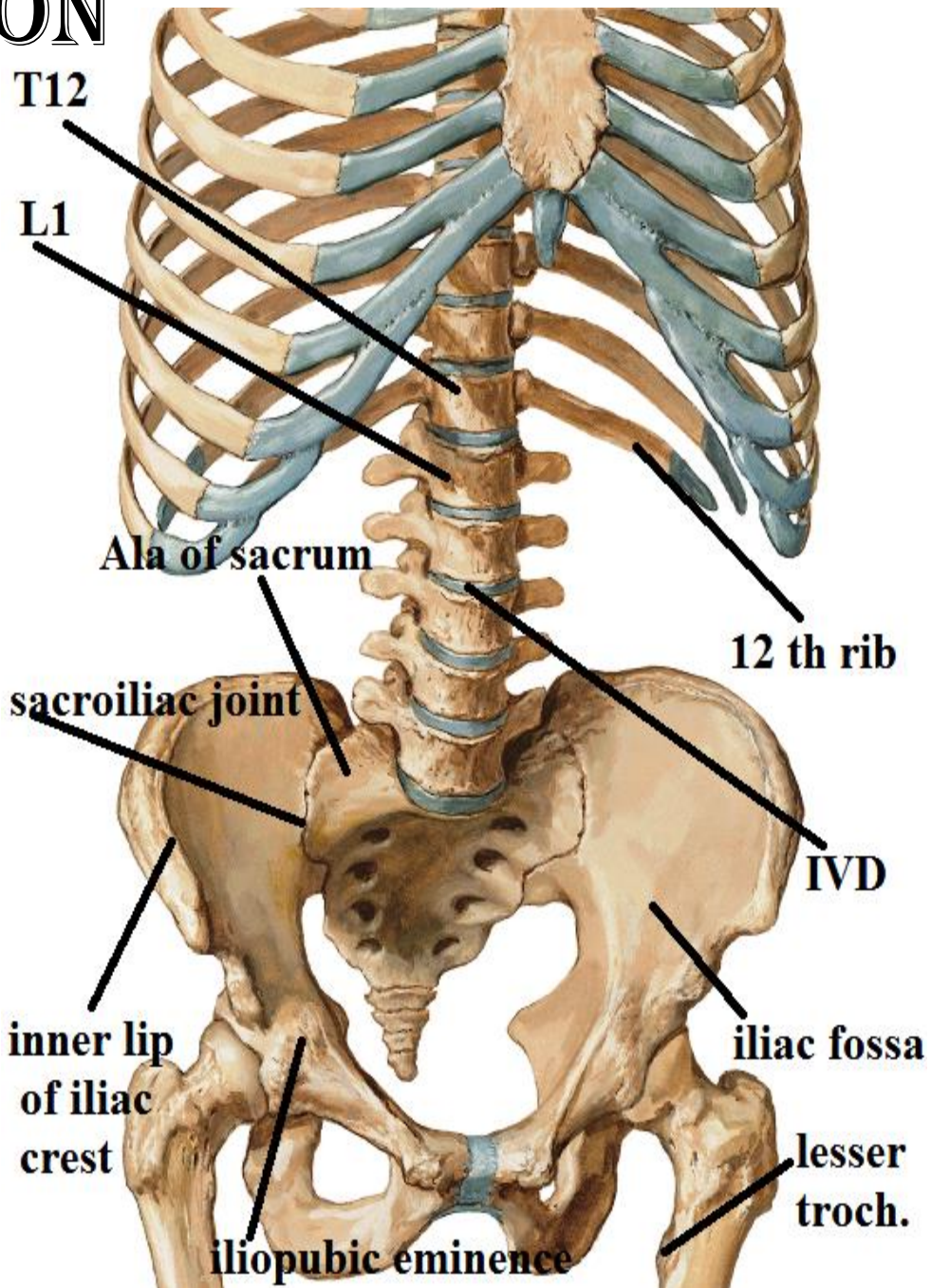
POST. ABD. WALL & DIAPHRAGM



BY

DR ABULMAATY MOHAMED
ASSISTANT PROFESSOR
ANATOMY & EMBRYOLOGY
MUTAH UNIVERSITY

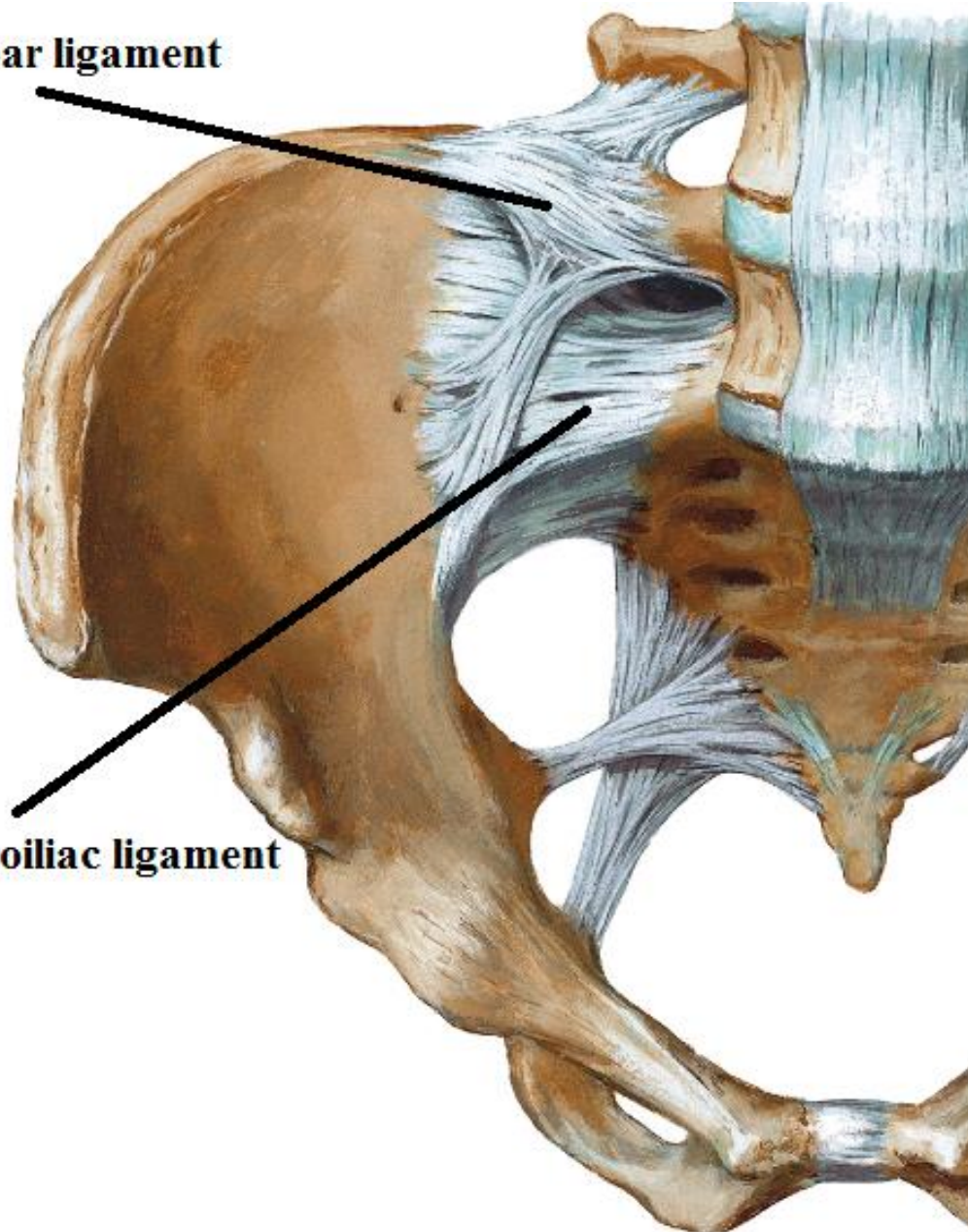
SKELETON



SKELETON

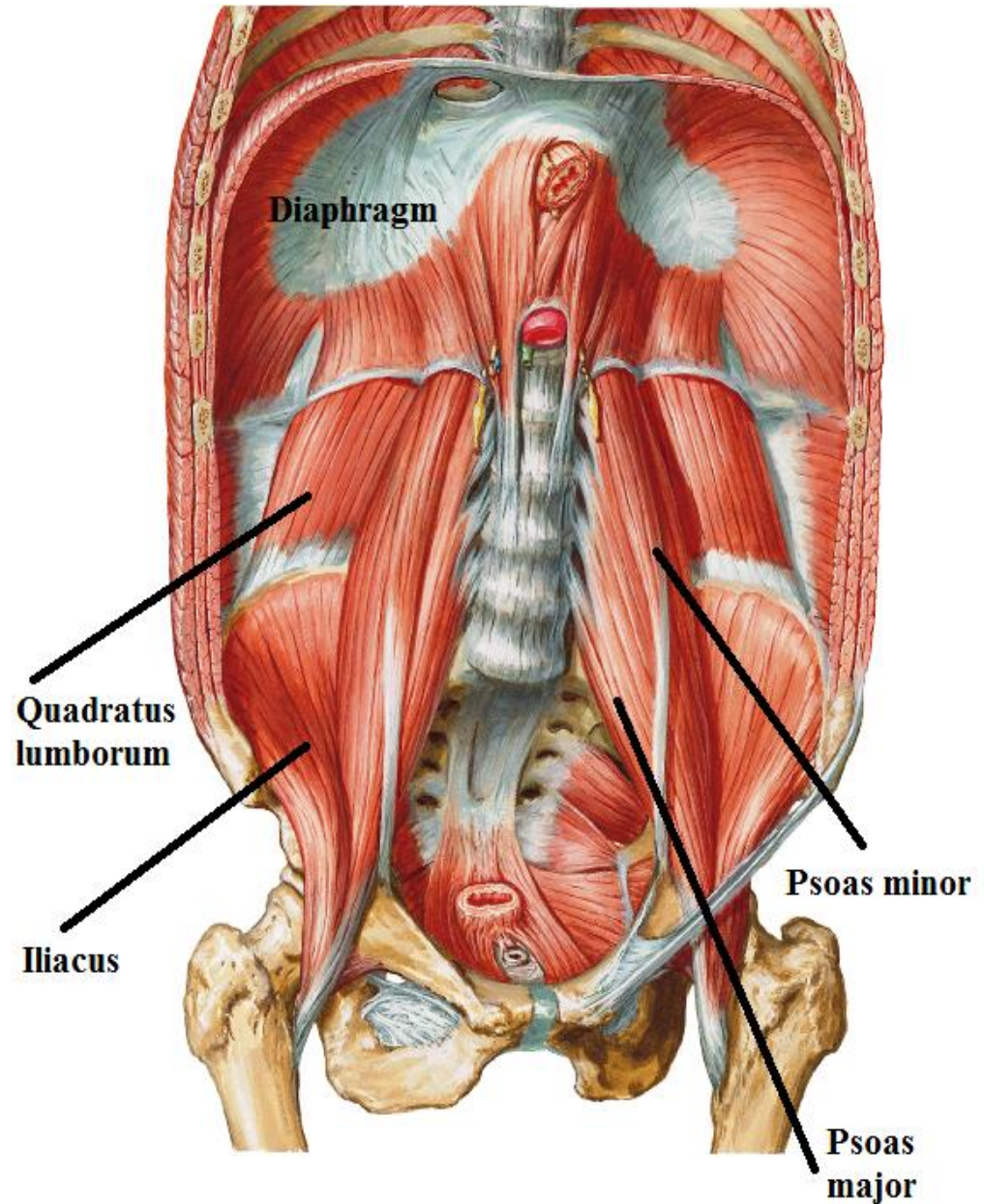
Ilio lumbar ligament

Ant.sacroiliac ligament



POST. ABD. WALL MUSCLES

- 1- Quadratus lumborum
- 2- Iliacus
- 3- Psoas minor
- 4- Psoas major
- 5- Diaphragm



POST. ABD. WALL MUSCLES

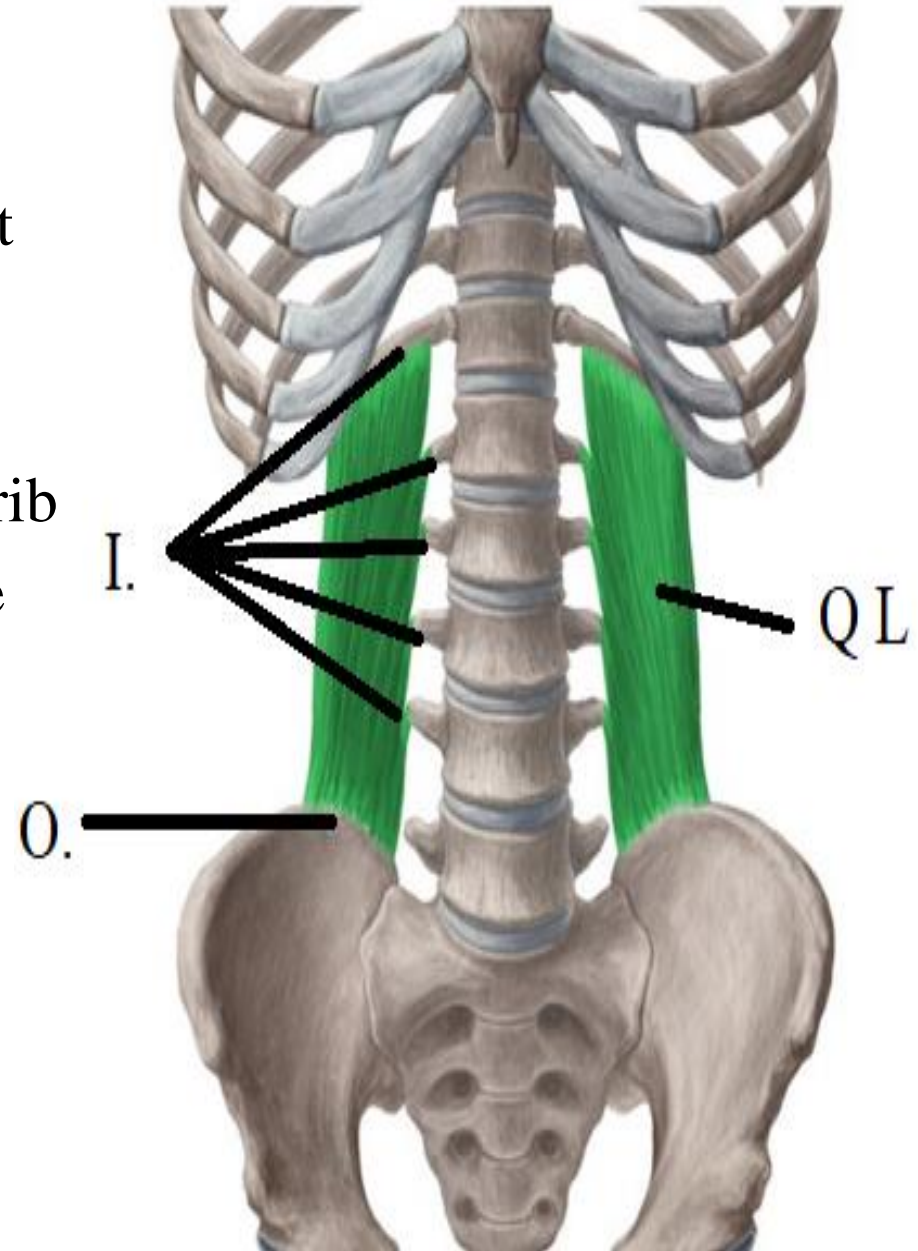
1- QUADRATUS LUMBORUM

O.:-

- post. 1/3 of inner lip of iliac crest
- ilio lumbar ligament

I.:-

- lower part of medial half of last rib
- tips of upper 4 lumbar transverse processes



POST. ABD. WALL MUSCLES

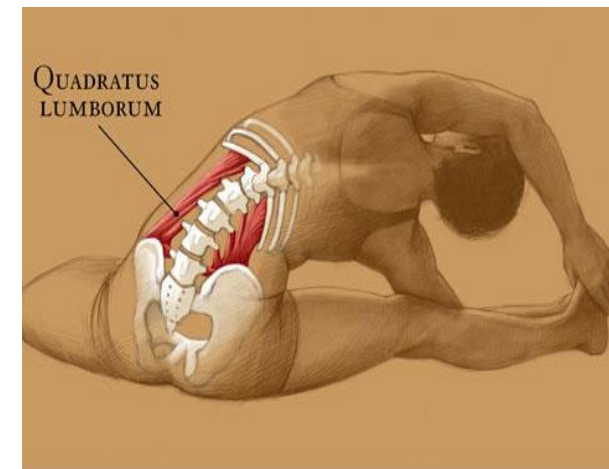
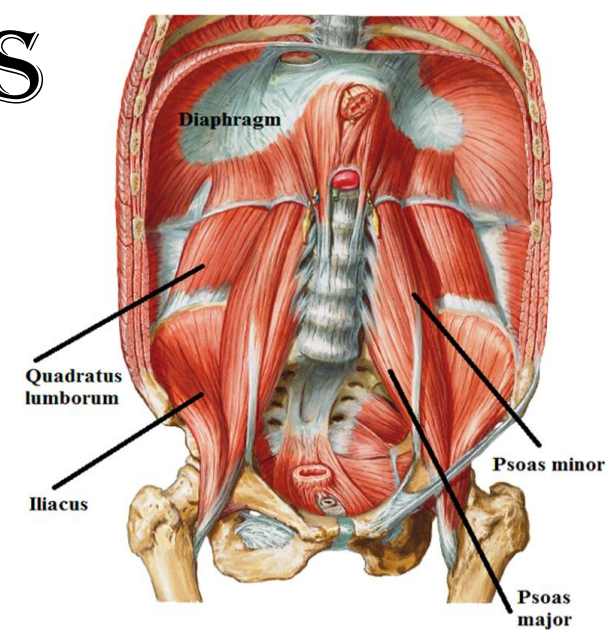
1- QUADRATUS LUMBORUM

A.:-

- fix last rib to allow good contraction of diaphragm
- one muscle do lateral flexion of the trunk
- 2 muscles extend the trunk.

N.S.:-

T12 & upper 4 lumbar nerves.



POST. ABD. WALL MUSCLES

ILIACUS

O.:-

- Iliac fossa
- Inner lip of iliac crest

I.:-

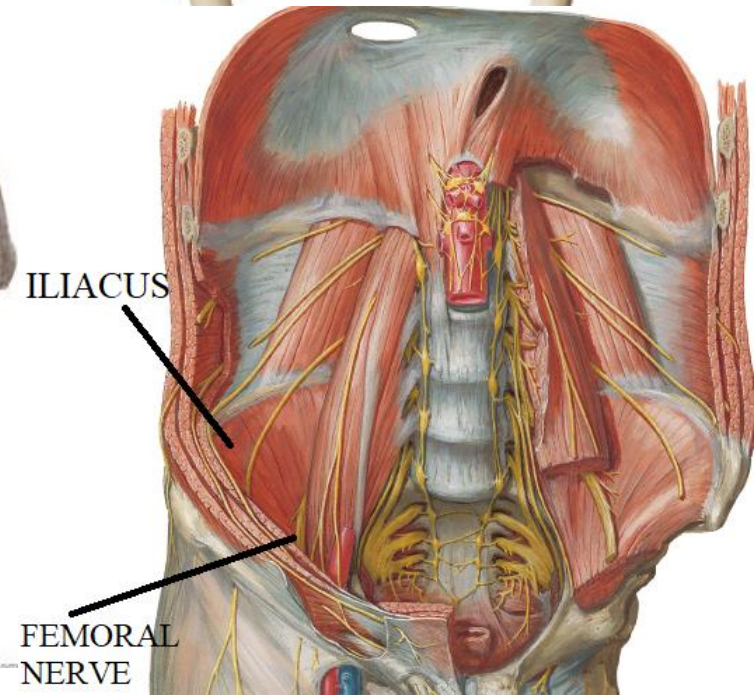
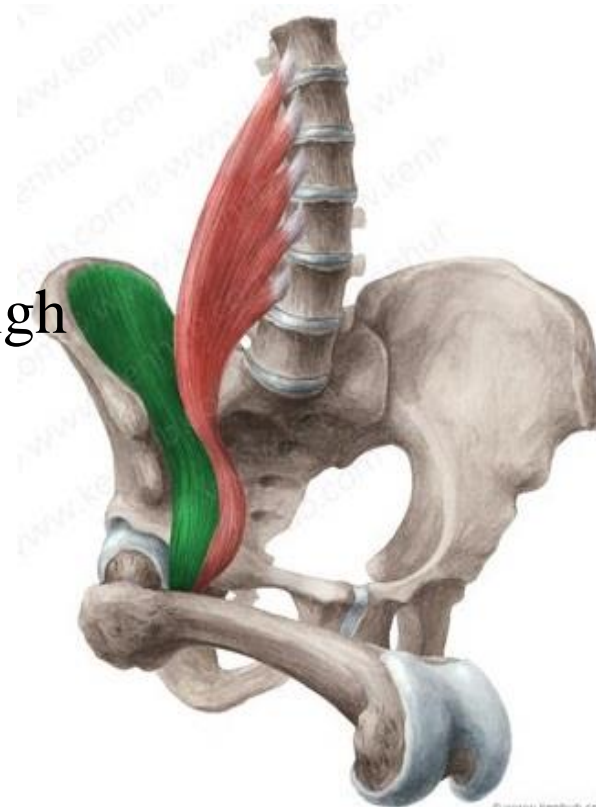
Lesser trochanter

A.:-

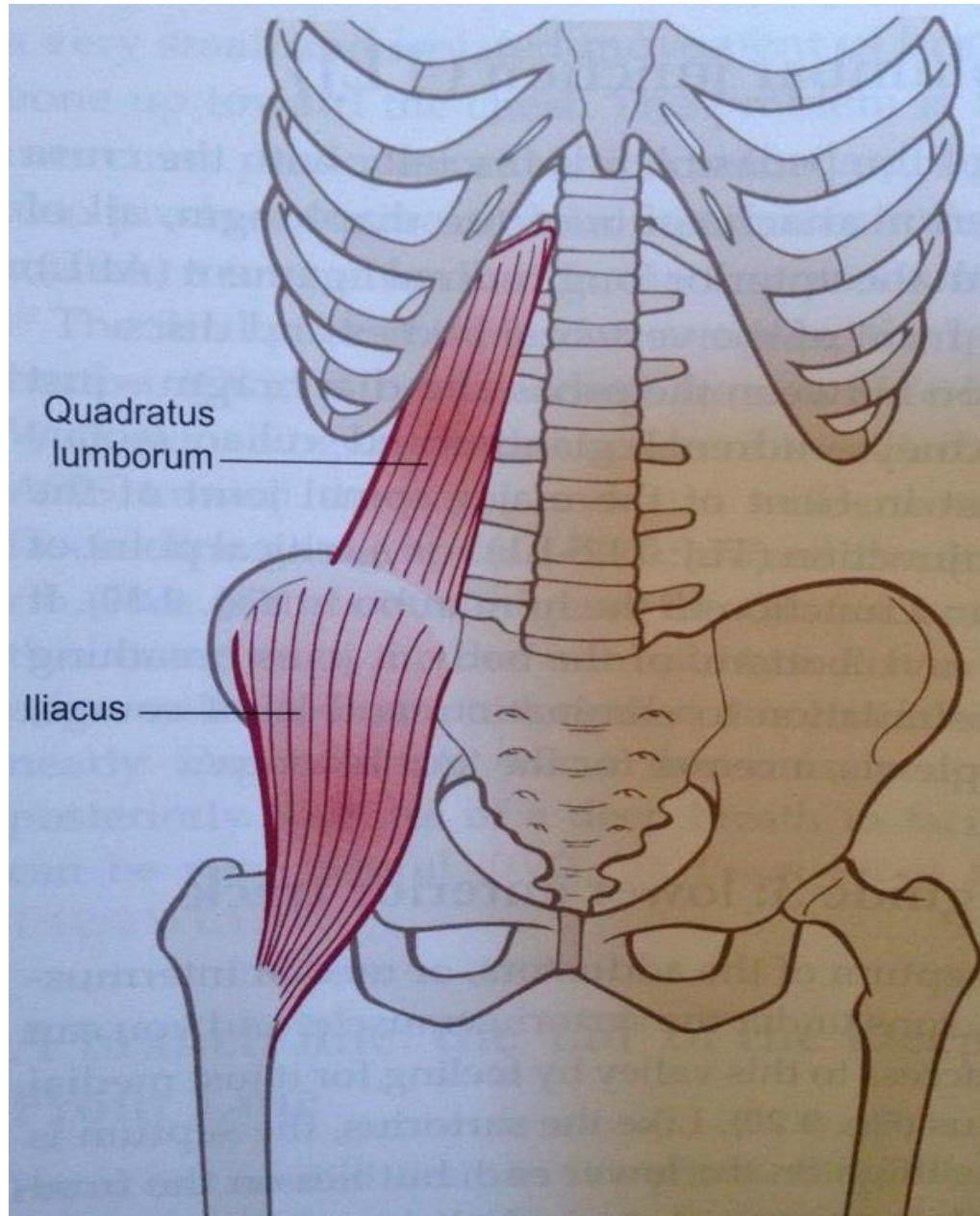
Flexion &
lateral rotation of thigh

N.S.:-

femoral nerve



POST. ABD. WALL MUSCLES



POST. ABD. WALL MUSCLES

PSOAS MAJOR

O.:-

- 5 slips, each arise from sides of 2 adjacent lumbar vertebrae & IVD (1st. slip arise from T12 & L1 & disc in ())
- 5 tendinous arches bridging over lumbar vessels.
- front of the 5 lumbar transverse processes

I.:-

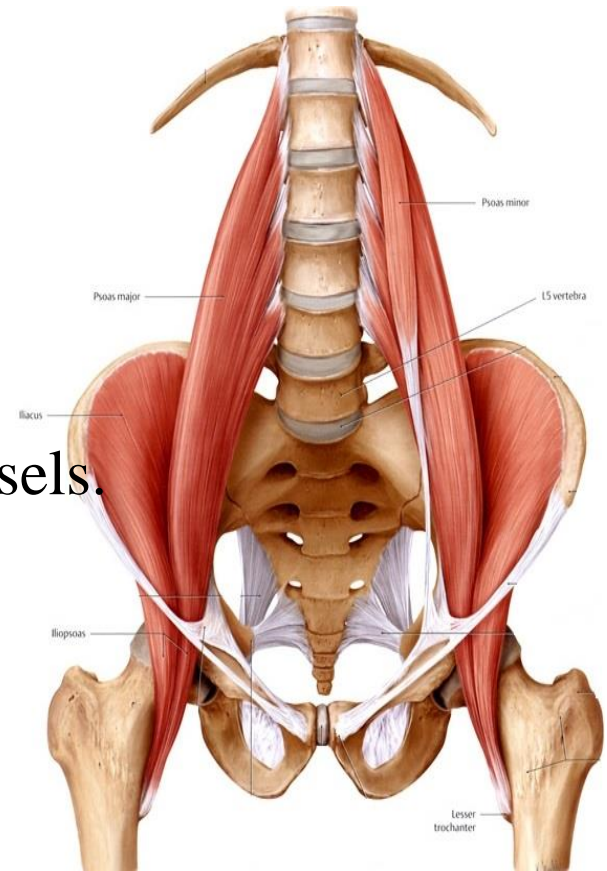
- Lesser trochanter

A.:-

- Flexion & lateral rotation of thigh
- one muscle do lateral flexion of the trunk
- 2 muscles Flex trunk as sitting up from lying position

N.S.:-

Lumbar nerves 1, 2, 3



POST. ABD. WALL MUSCLES

PSOAS MINOR (may be absent)

O.:-

- Sides of T12 & L1 & disc in ()

I.:-

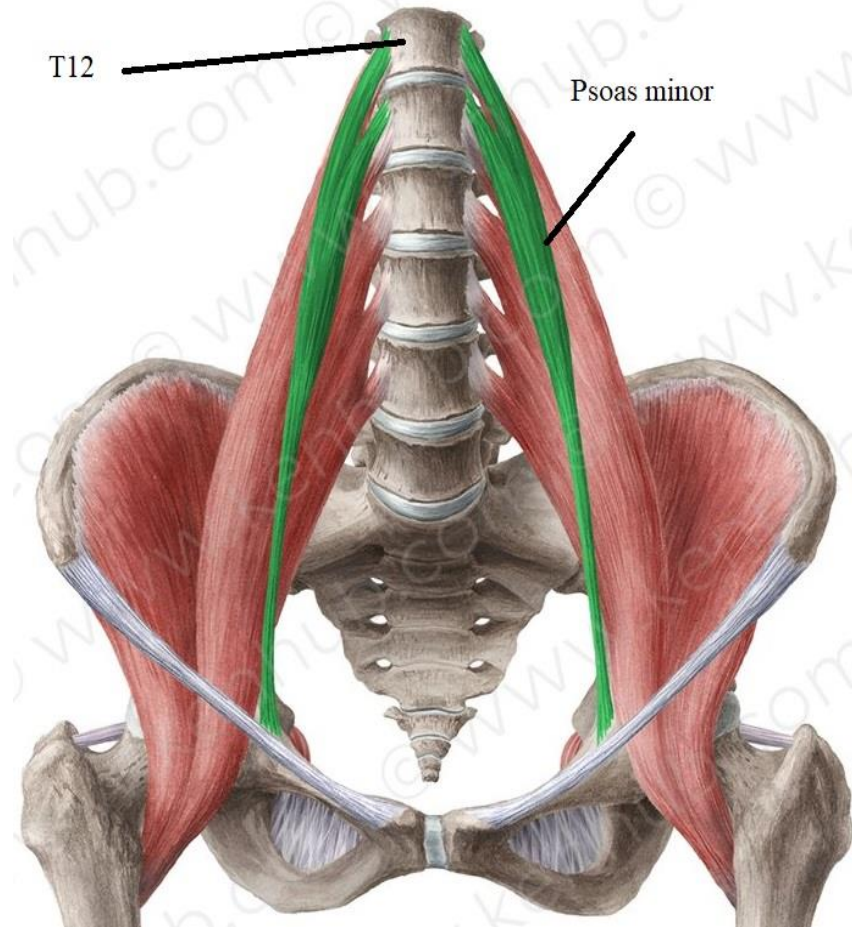
- Iliopubic eminence

A.:-

- Weak flexion of the trunk

- N.S.:-

1st lumbar nerve



FASCIA OF POST. ABD. WALL

1- iliac fascia:

Site:- covers iliacus.

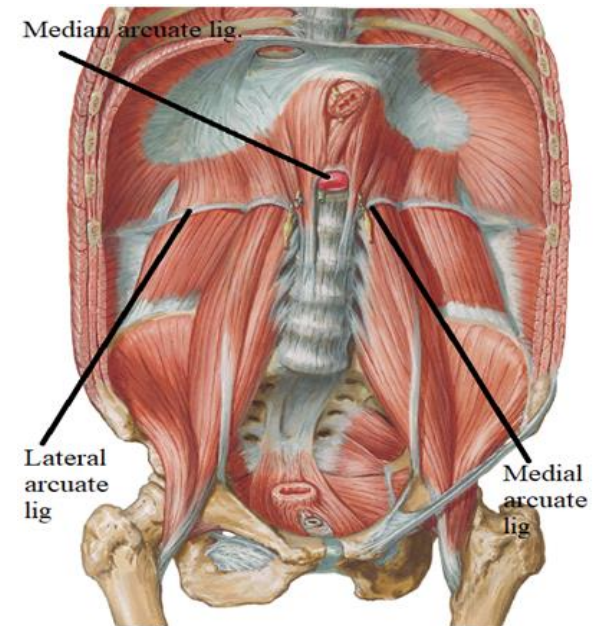
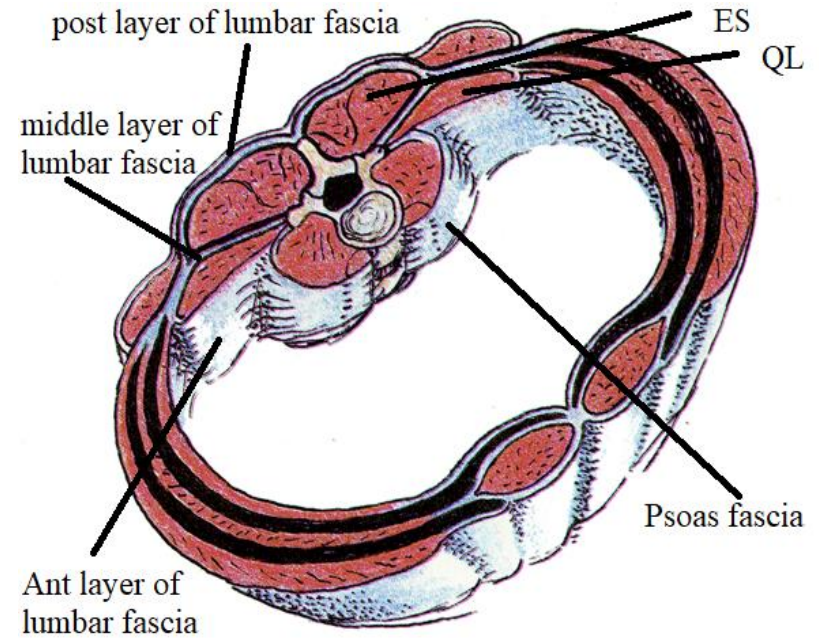
Special features:- prolong to form post. wall of femoral sheath.

2- psoas fascia:

Site:- covers psoas major

Special features:- thickened above forming **medial arcuate lig.**

which extends from body of L1 to tip of transverse process of L1



FASCIA OF POST. ABD. WALL

3-lumbar (thoracolumbar) fascia:-

Def.: fascia invests quadratus lumborum & Erector spinae

layers:

1- ant. layer:

Site:-front of quadratus lumborum

Special features:-thickened above forming **lateral arcuate lig.**

which extends from tip of transverse process of L1 to last rib.

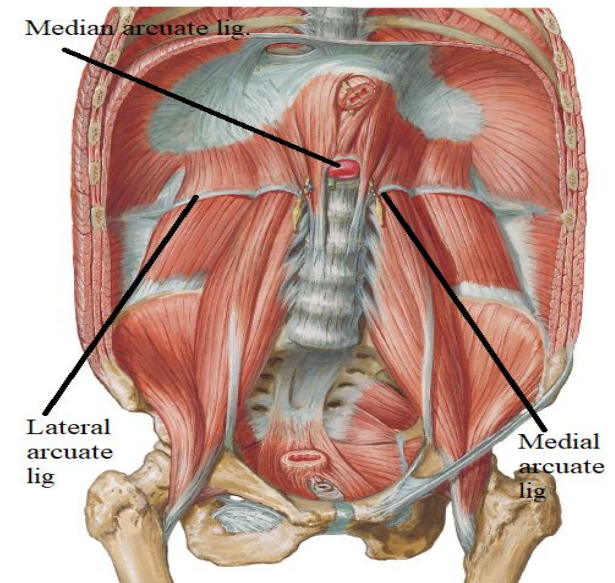
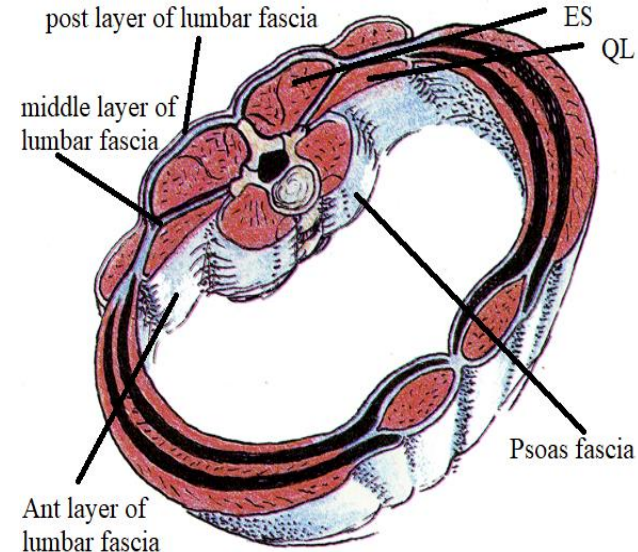
2- middle layer:

Site:-back of quadratus lumborum

N.B.: ant. & middle layers fuse at lateral border of quadratus lumborum to give origin to transversus abdominis & int. oblique

3- post. layer:

Site:-back of Erector spinae



DIAPHRAGM

Def.:- fibro muscular partition () thoracic & abdominal cavities.

Shape:- dome shape has
2 peripheral elevated muscular part (called copula)
& central depressed tendinous part.

Origin:- (fleshy) from thoracic outlet,
divided into 3 parts.

1-sternal part:-

2 slips from back of xiphoid process.

2-costal part:-

6 slips from inner surface of lower 6 c.c.

3-lumbar (vertebral):-

•Rt. crus:- from Rt. side of upper 3 lumbar v.

•Lt. crus:- from Lt. side of upper 2 lumbar v.

•median arcuate ligament:- () Rt. & Lt crura

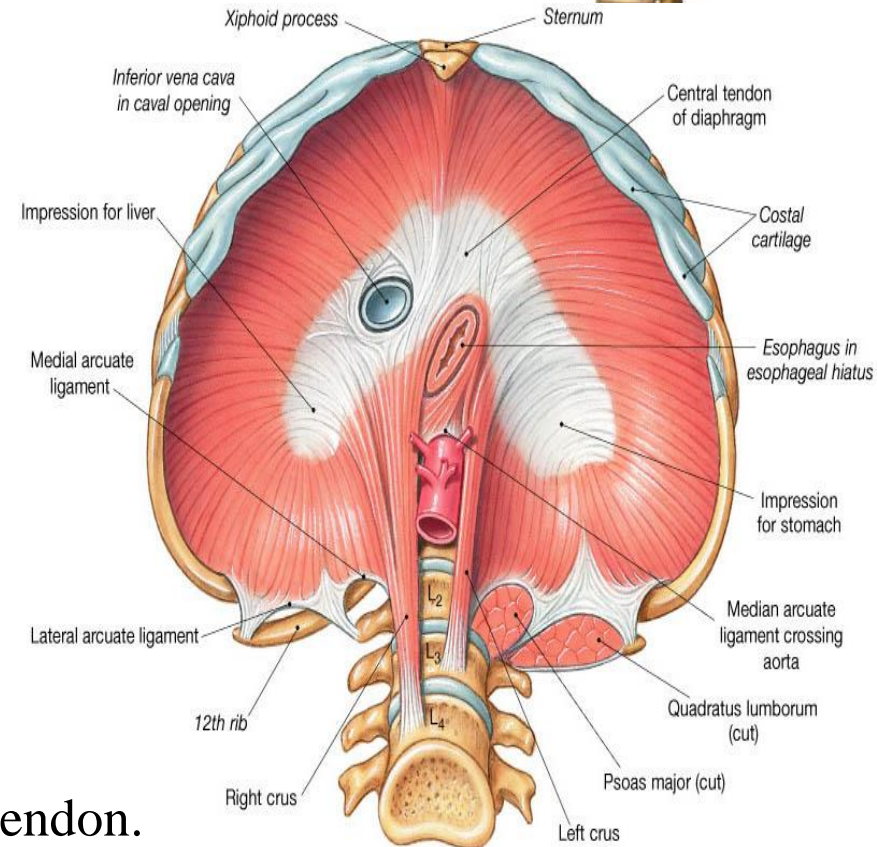
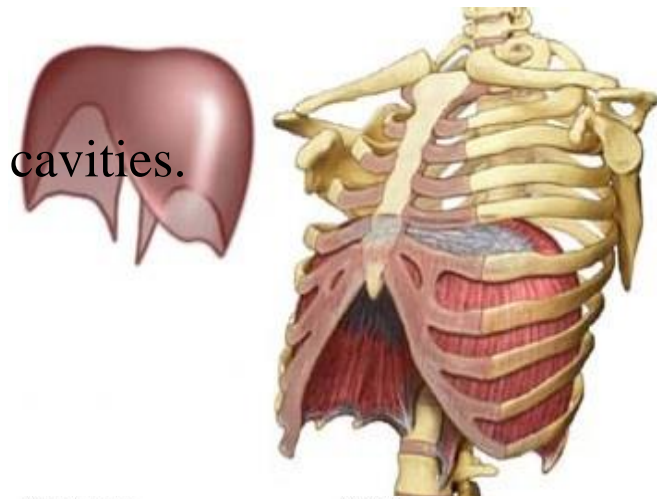
•2 medial arcuate ligaments:-

() body & tip of transverse process of L1

•2 lateral arcuate ligament:-

()tip of transverse process of L1 &last rib

Insertion:-fibers converge to attach to central tendon.



(a) Inferior view

DIAPHRAGM

Openings of diaphragm

Aortic Hiatus

Site:- level of T12 in median plane

Boundaries: Behind the median arcuate ligament & () the 2 crura

Transmits:-

Aorta & Thoracic duct & Azygos vein

oesophagus opening

Site:- level of T10 1" to Lt. of median plane

Boundaries:- Rt. crus of diaphragm

Transmits:-

Oesophagus & 2 vagi & Esophageal brans. of Lt gastric a.

vena cava opening

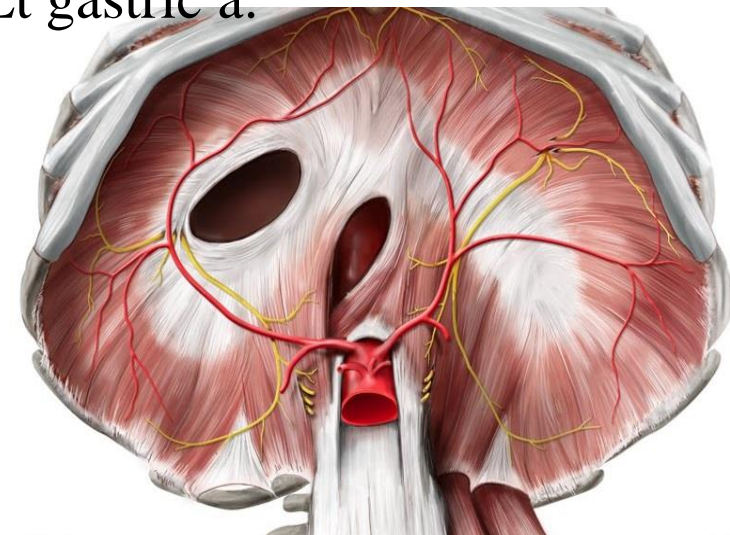
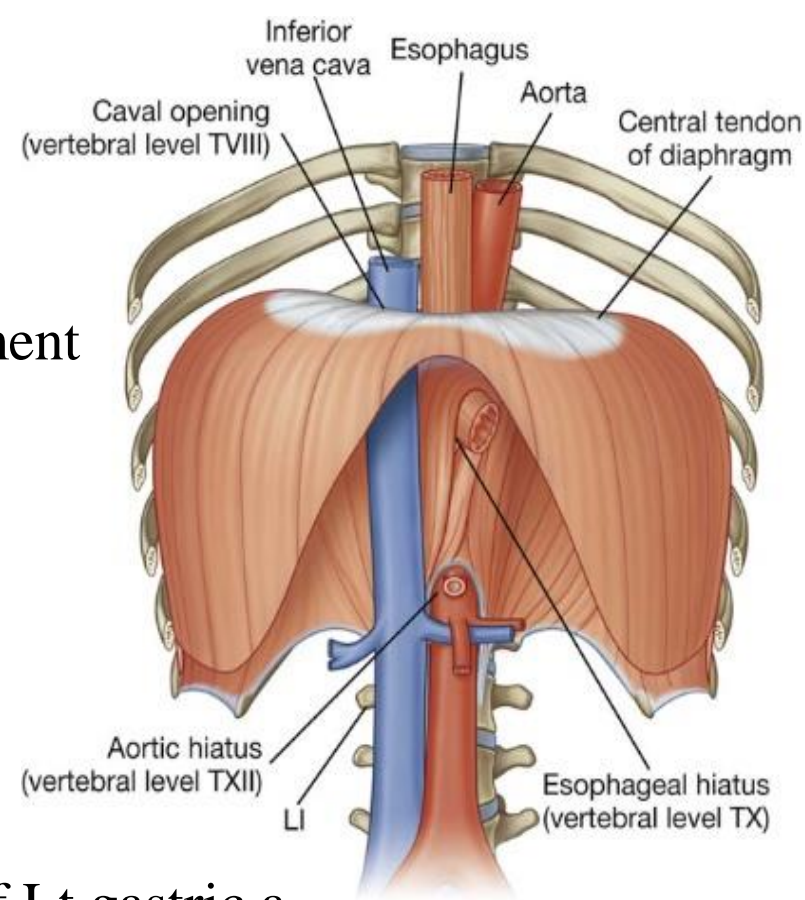
Site:- level of T8 1" to Rt. of median plane

Boundaries:- central tendon.

Transmits:-

IVC & Rt. phrenic n.

& Lymphatics from liver to mediastinal nodes



DIAPHRAGM

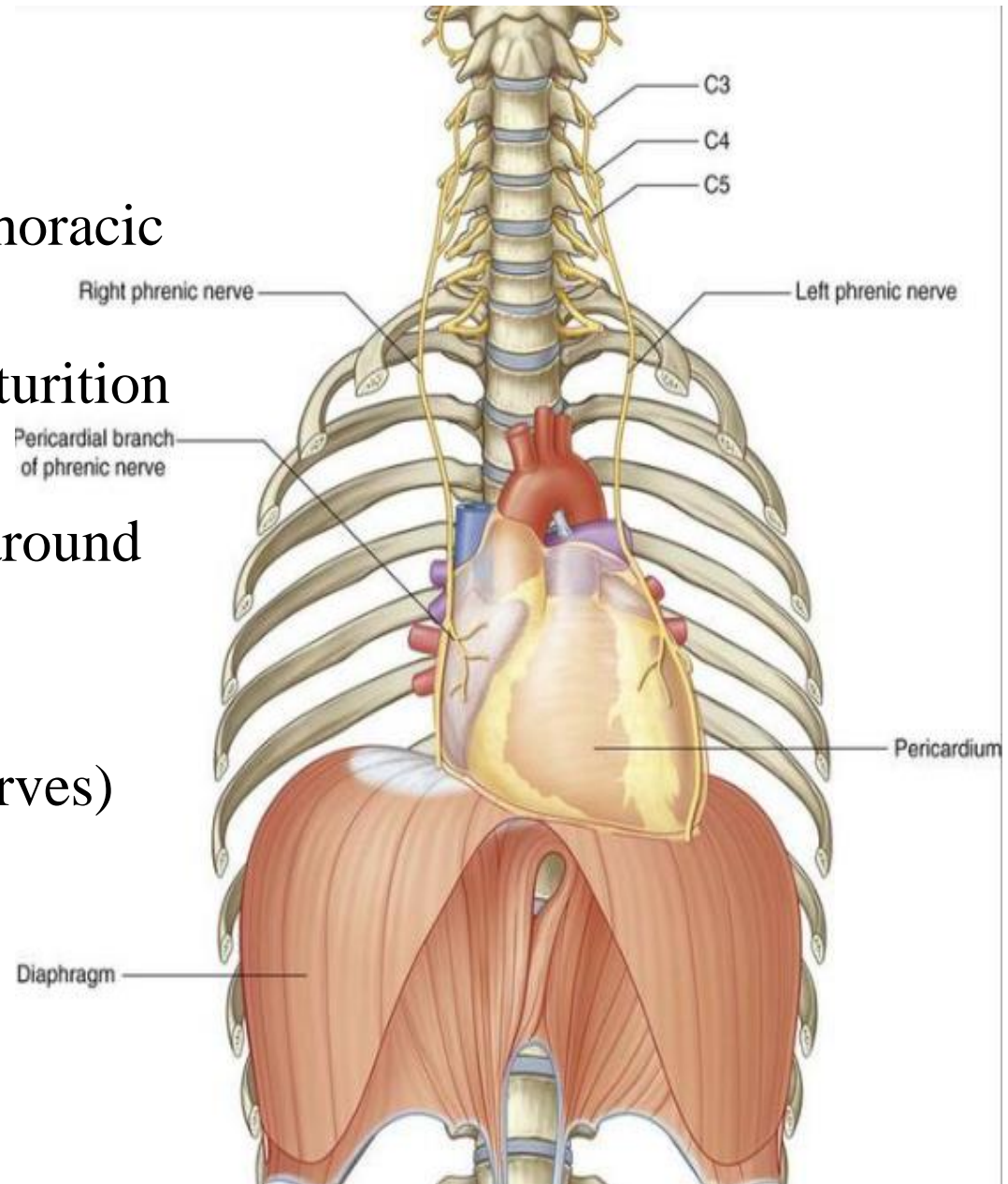
Action:-

- 1-Main inspiratory muscle:-
its descent forms -ve intra-thoracic pressure.
- 2-expulsive muscle as in micturition & defecation & delivery.
- 3-Rt. crus act as a sphincter around esophagus.

Nerve supply:-

motor: phrenic n.(C3, 4, 5 nerves)

sensory: phrenic n. &
lower 6 thoracic nerves



THANQ