

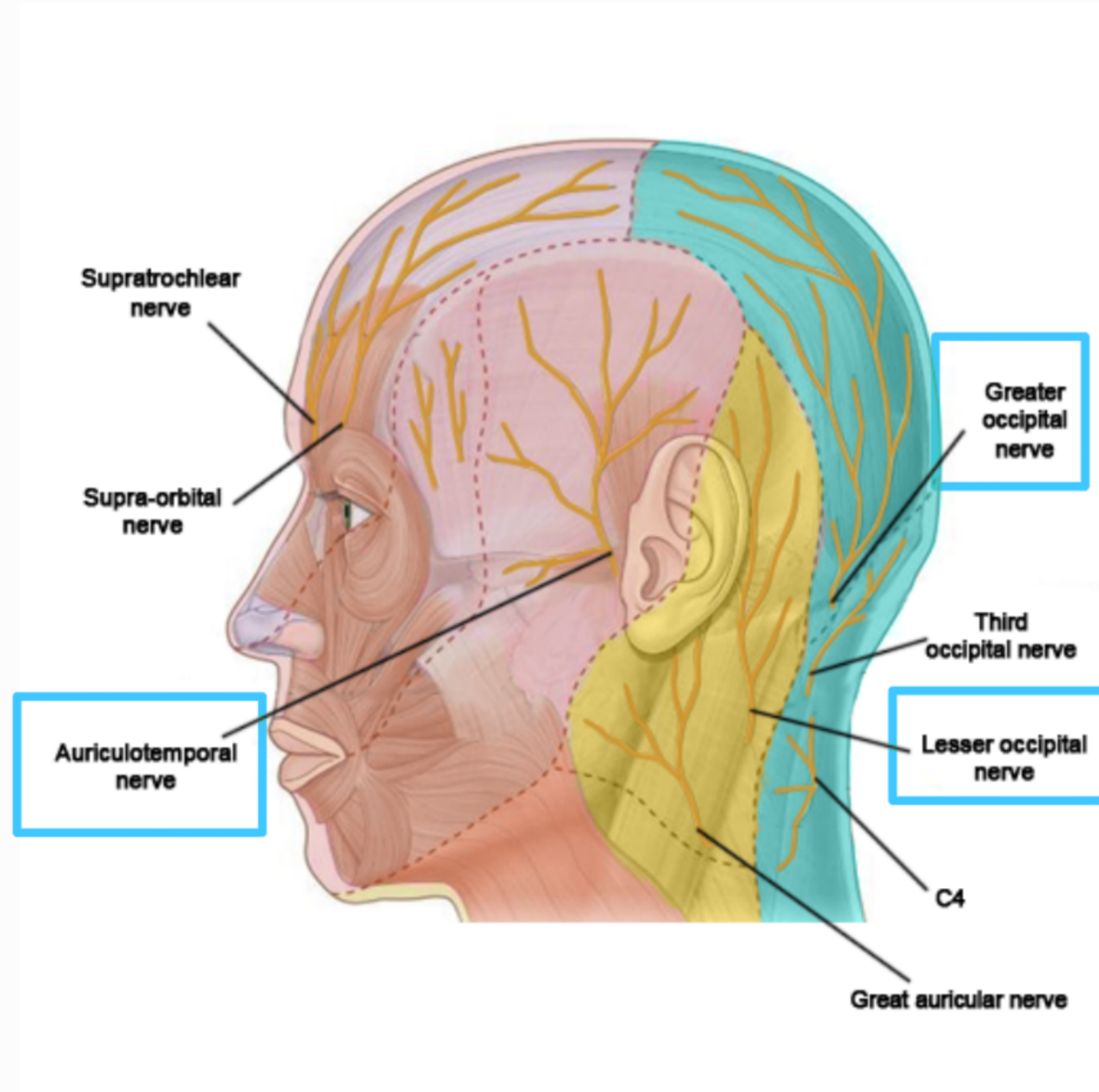
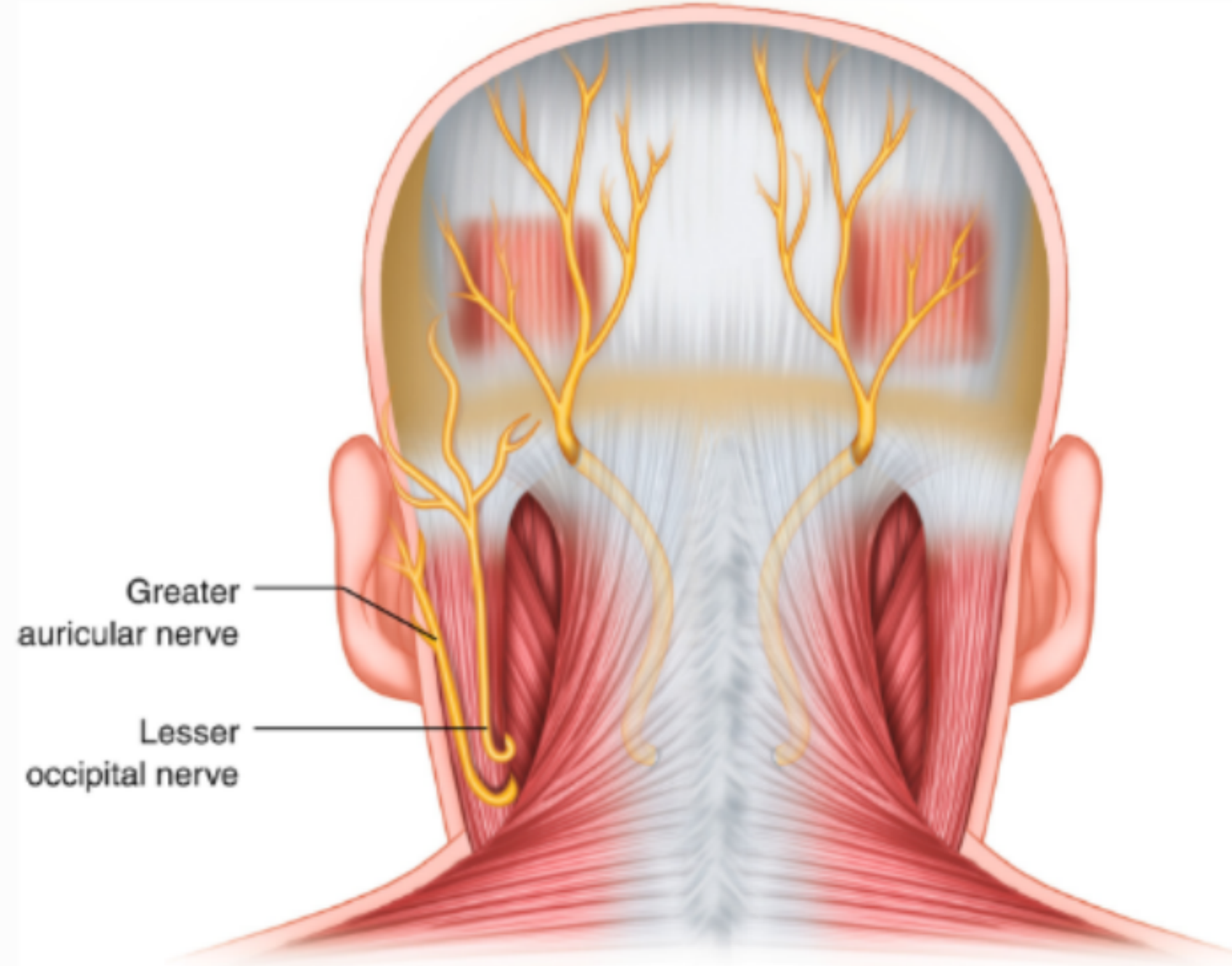
## Sensory Nerve Supply of the Scalp

- **The lesser occipital nerve** <sup>→ lateral</sup>

A branch of the cervical plexus (C2),

Supplies the :

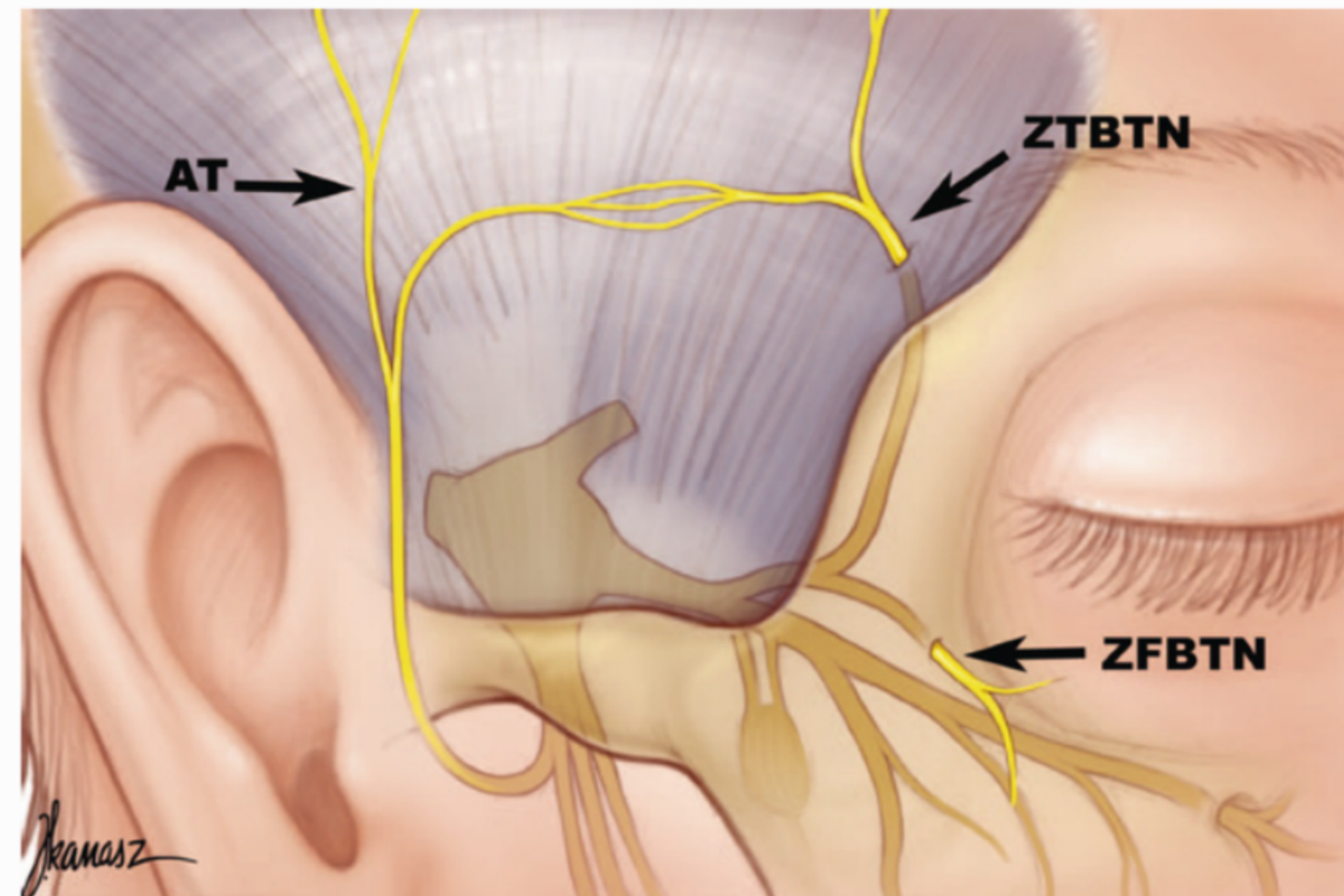
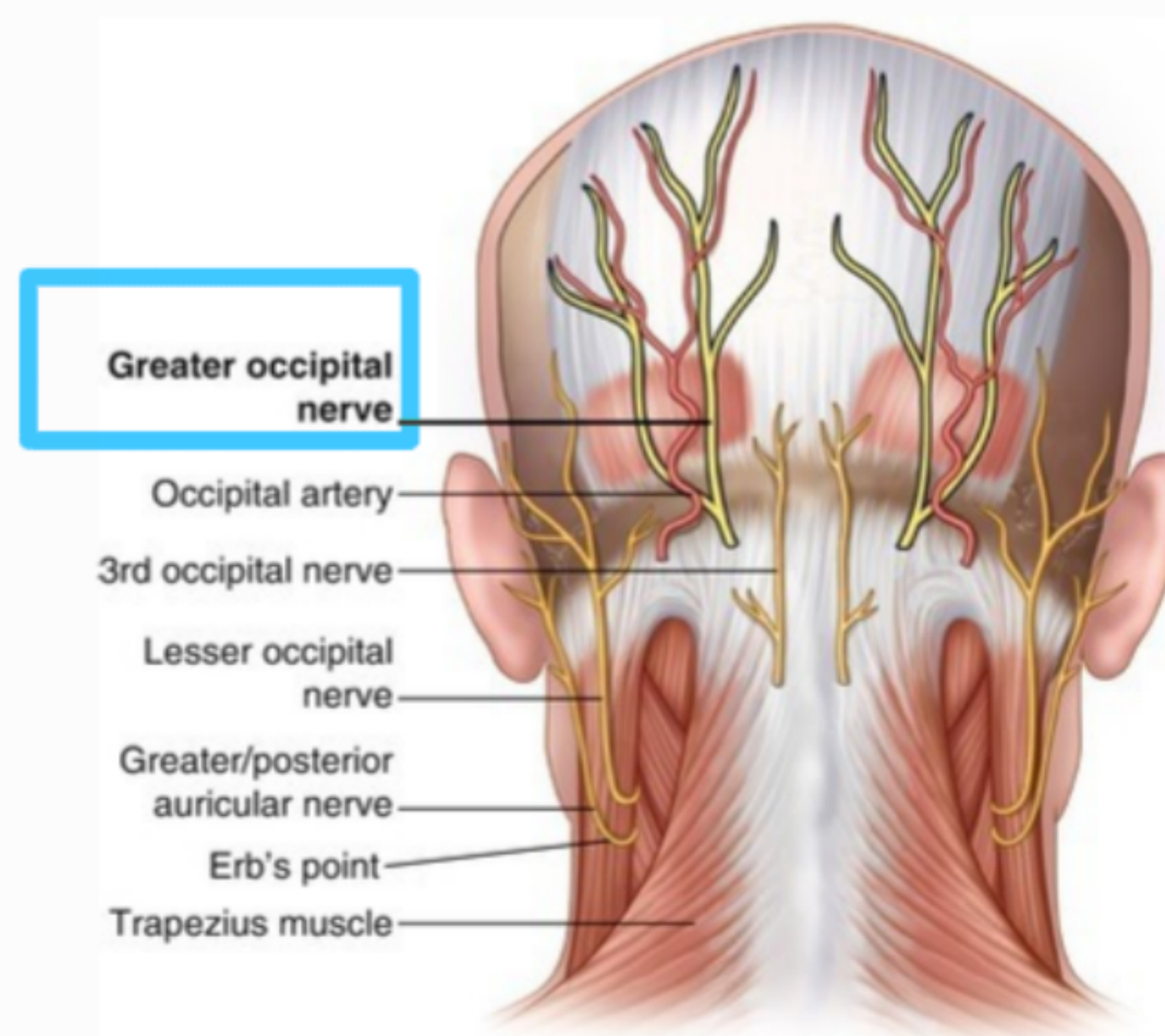
1. Scalp over the lateral part of the occipital region
2. The skin over the medial surface of the auricle.



- **The greater occipital nerve**

A branch of the posterior ramus of the **2nd cervical nerve**.

Ascends over the back of the scalp and supplies the skin as far forward as the vertex of the skull.



- **The zygomaticotemporal nerve**
- A branch of the **maxillary division of the trigeminal N** supplies the scalp over the temple.

- **The auriculotemporal nerve**

A branch of the **mandibular division of the trigeminal N.**

Ascends over the side of the head from in front of the auricle.

Its terminal branches supply the skin over the temporal region.