

EXTRAOCULAR MUSCLES OF ORBIT

Superior rectus

Origin: Common tendinous ring

Insertion:

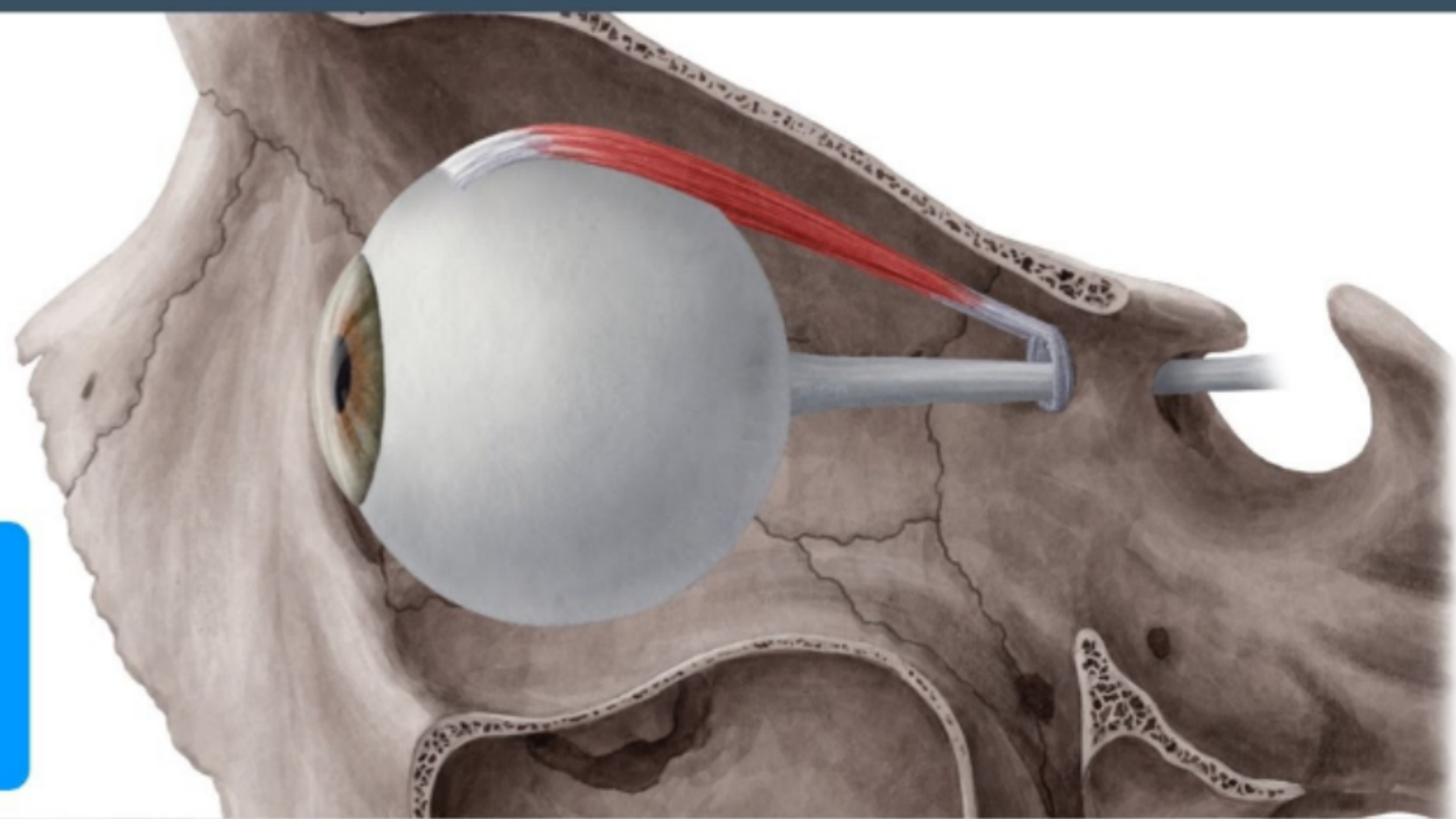
Superior surface of eyeball just posterior to corneoscleral junction

N. Supply: Oculomotor nerve

Action:

Raises cornea upward and medially

Superior rectus muscle



Inferior rectus

Origin: common tendinous ring

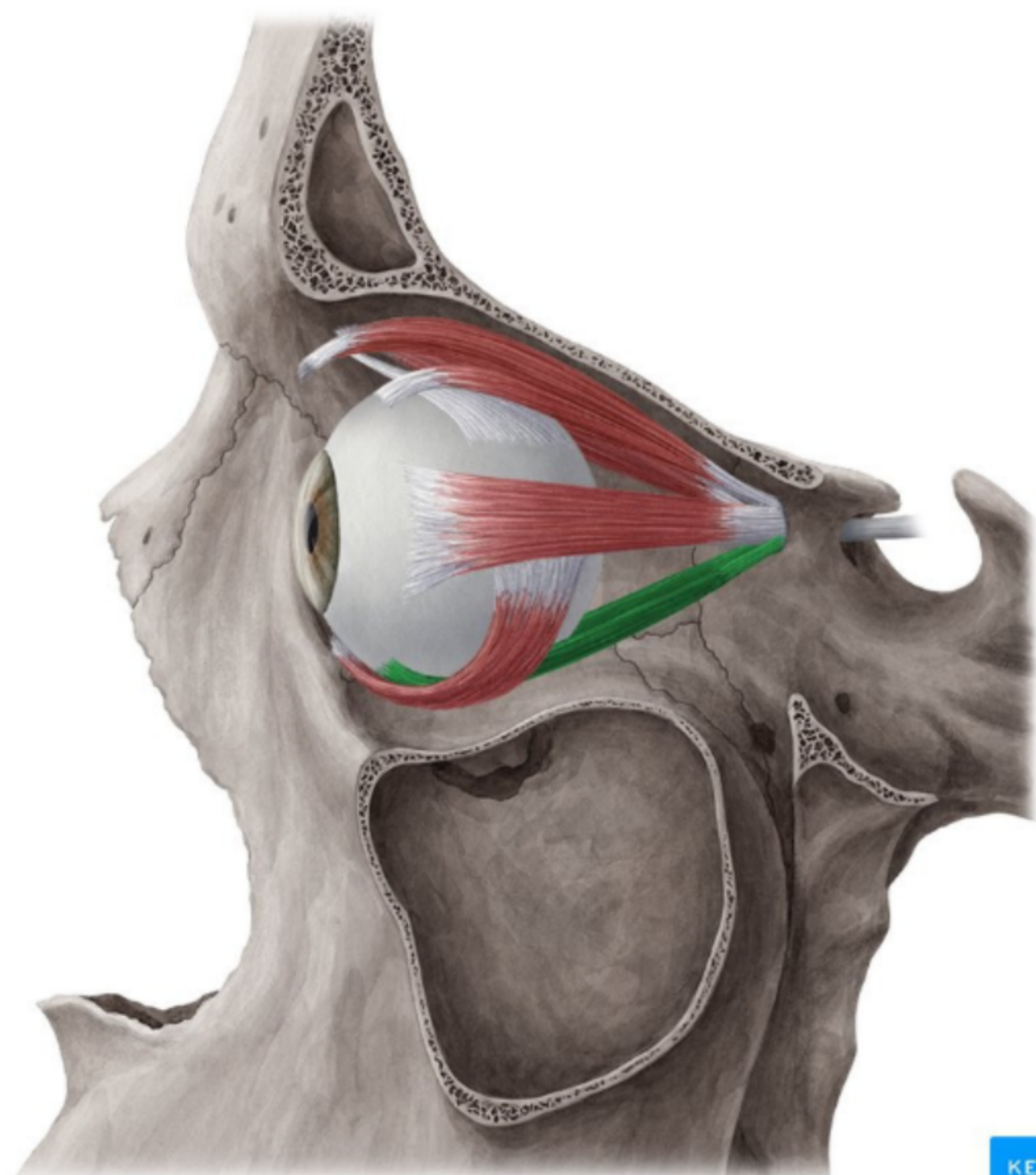
Insertion:

Inferior surface of eyeball just posterior to corneoscleral junction

N Supply: Oculomotor nerve (3rd cranial nerve)

Action:

Depresses cornea downward and medially



Medial rectus

Origin: Common tendinous ring

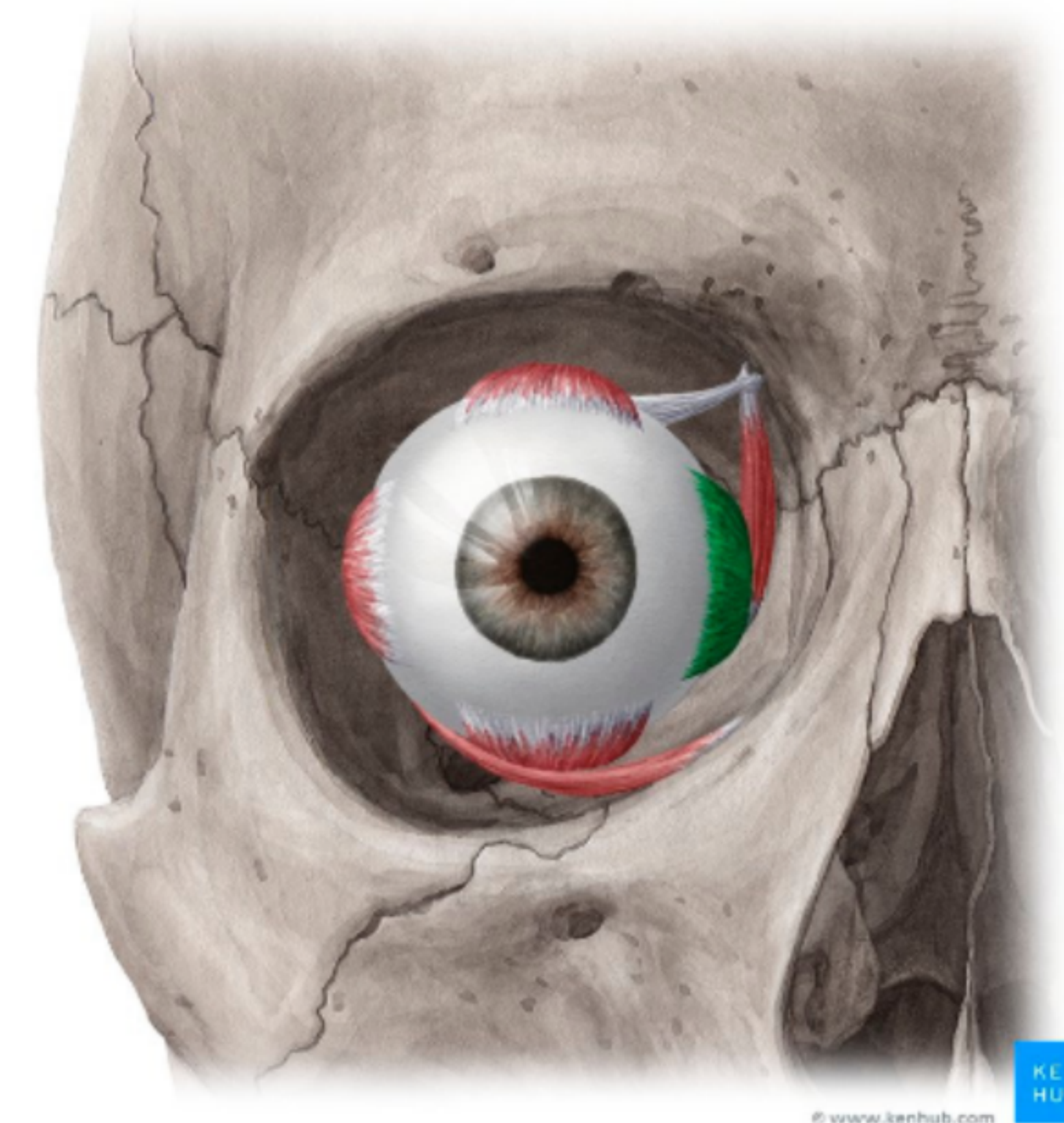
Insertion:

Medial surface of eyeball just posterior to corneoscleral junction

N. Supply: Oculomotor nerve (3rd cranial nerve)

Action:

Rotates eyeball so that cornea looks medially



Lateral rectus

Origin: Common tendinous ring

Insertion:

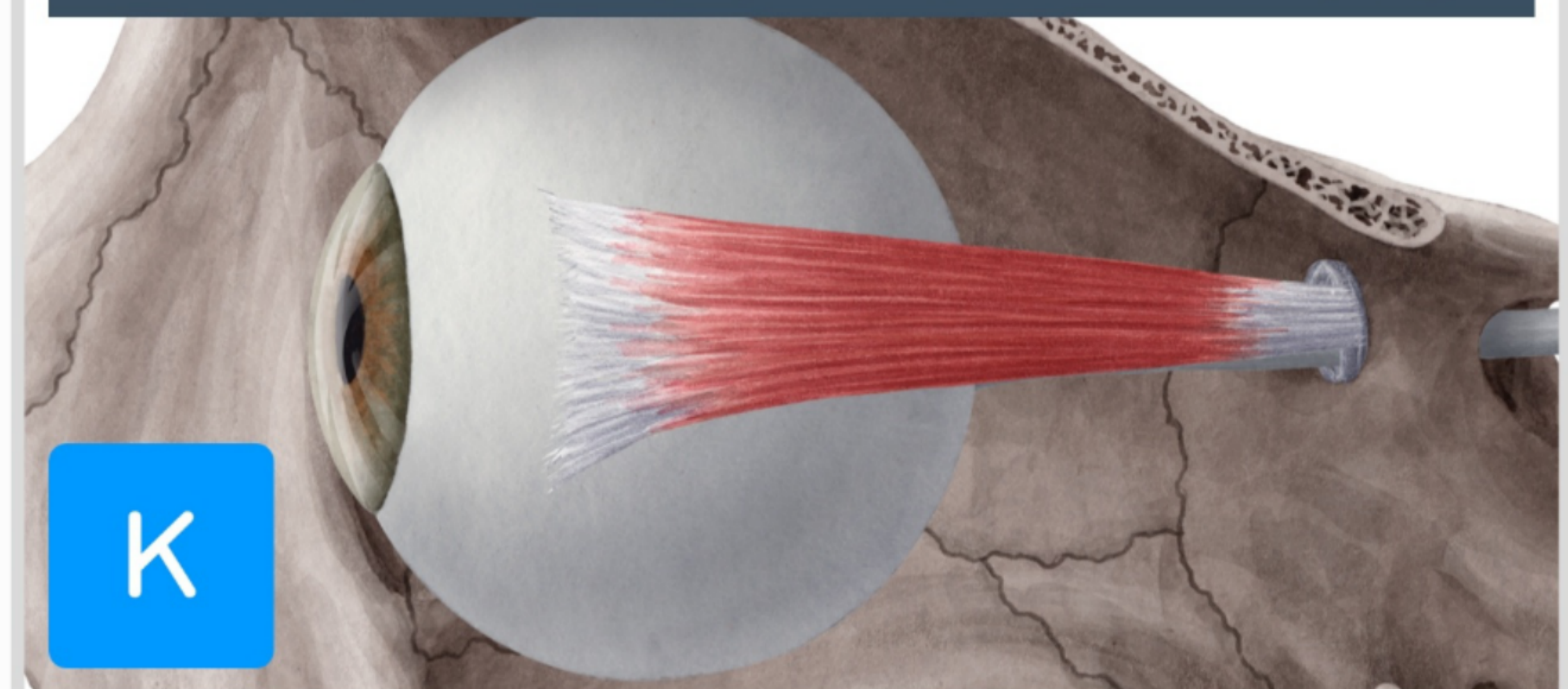
Lateral surface of eyeball just posterior to corneoscleral junction

N. Supply: Abducent nerve (6th cranial nerve)

Action:

Rotates eyeball so that cornea looks laterally

Lateral rectus muscle



Superior oblique

Origin: **Posterior wall of orbital cavity**

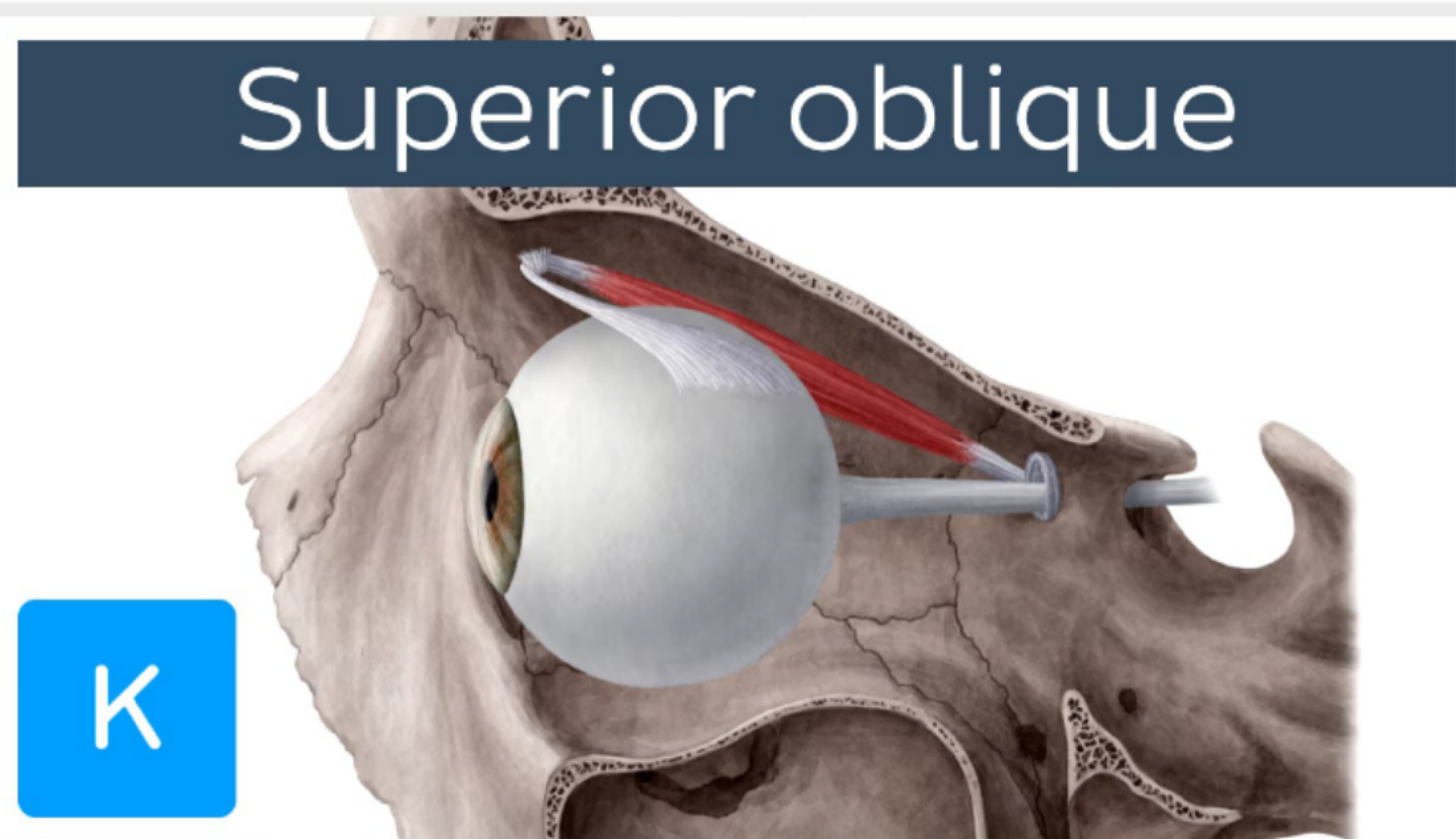
Insertion:

Passes through pulley and is attached to superior surface of eyeball beneath superior rectus

N. Supply: **Trochlear nerve (4th cranial nerve)**

Action:

Rotates eyeball so that cornea looks **downward and laterally**



Inferior oblique

Origin: **Floor of orbital cavity**

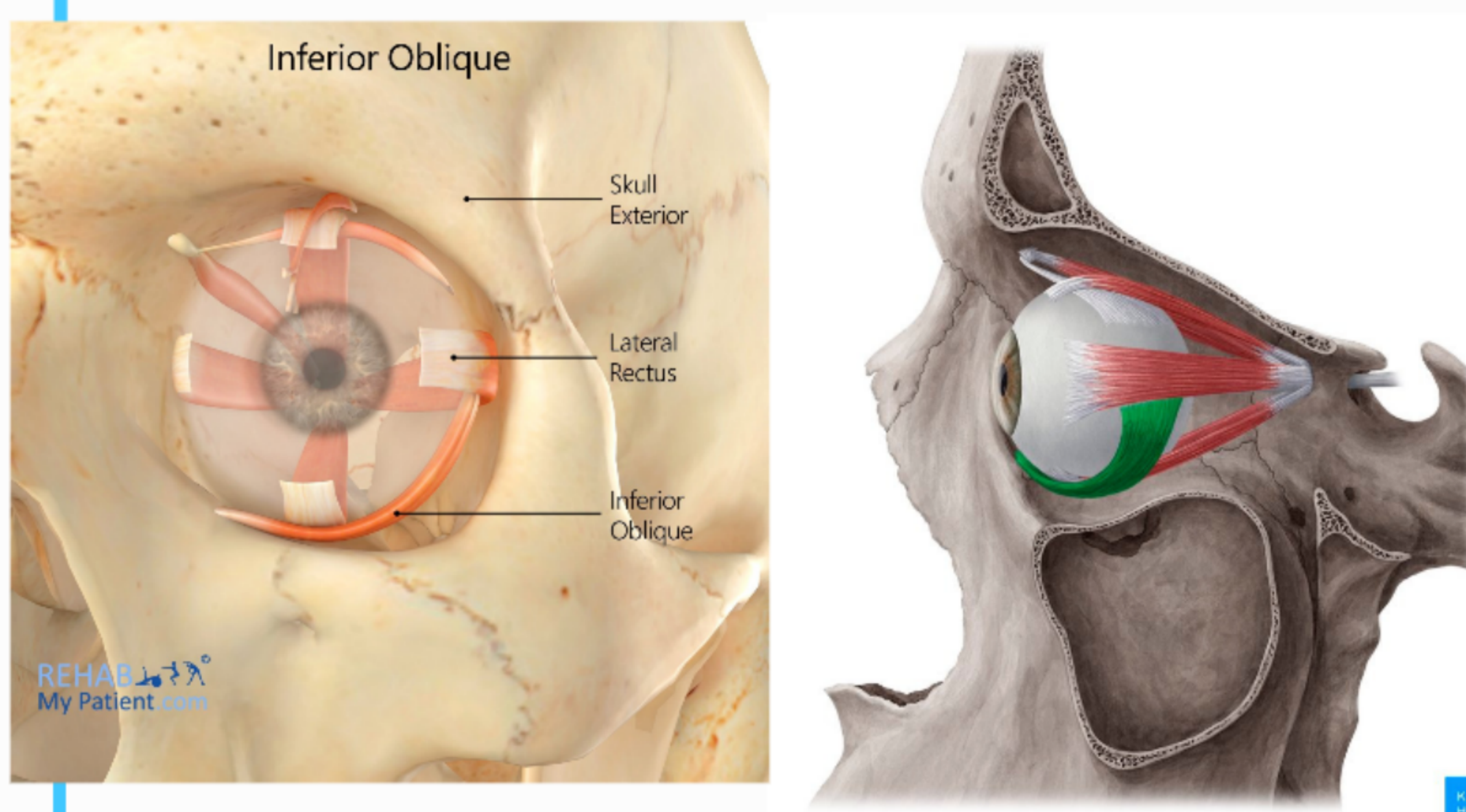
Insertion:

Lateral surface of eyeball deep to lateral rectus

N. Supply: **Oculomotor nerve (3rd cranial nerve)**

Action:

Rotates eyeball so that cornea looks **upward and laterally**



Levator palpebrae superioris

Origin: **Back of orbital cavity**

Insertion:

Anterior surface and upper margin of superior tarsal plate

N. Supply:

- **Striated muscle oculomotor nerve**
- Smooth muscle sympathetic

Action: **Raises upper lid**

