

# **GIT practical slides**

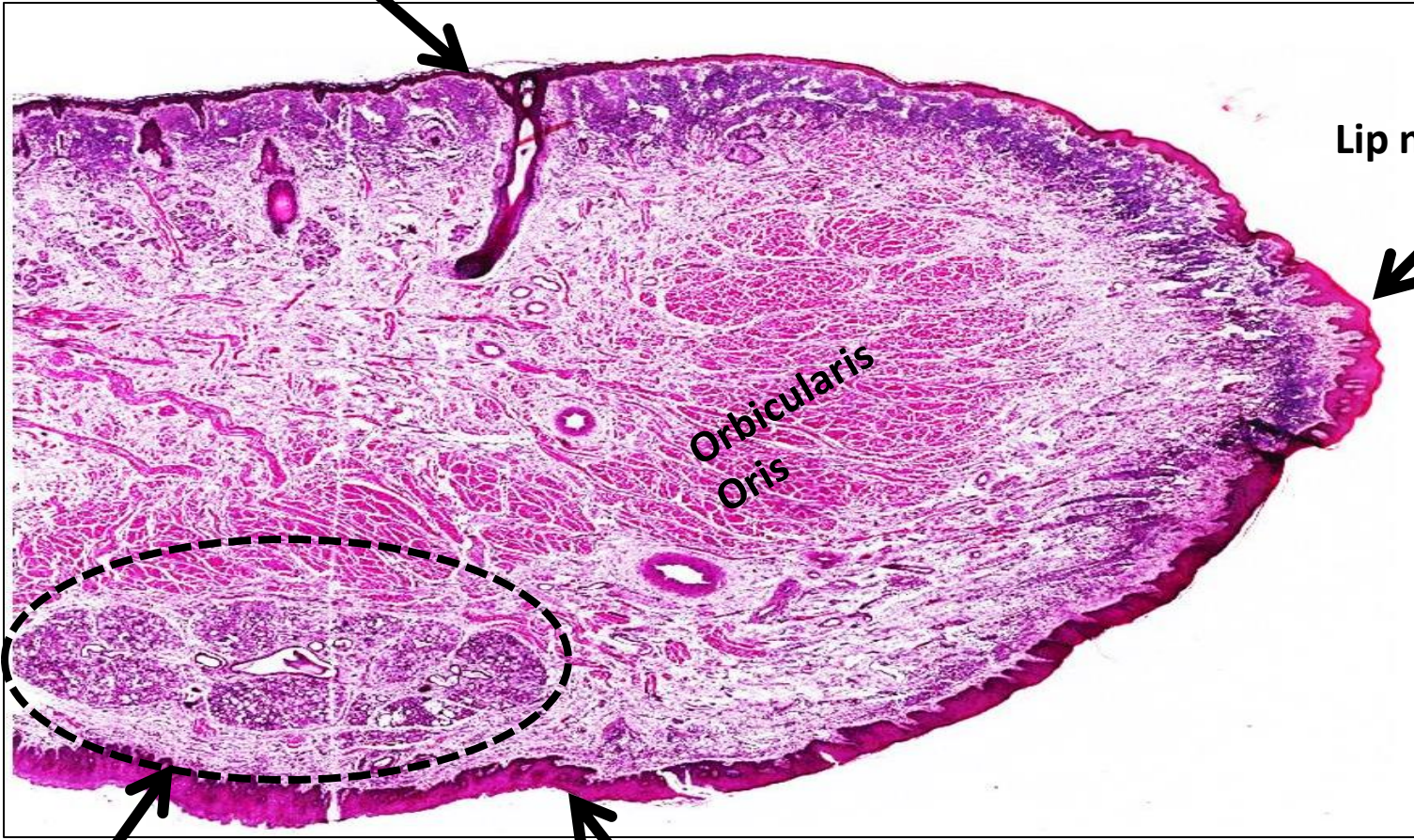
## **2<sup>nd</sup> year 2023**

- **The assigned slides:**

1. **Lip**
2. **Tongue x 2**
3. **Parotid gland**
4. **submandibular**
5. **Esophagus (dog)**
6. **Stomach (fundus)**
7. **Gastro-esophageal junction**
8. **Pyloro-duodenal junction**
9. **Recto-anal junction**
10. **Duodenum**
11. **Ileum**
12. **appendix**
13. **Colon (large intestine)**
14. **Liver**
15. **Pancreas**

# Lip

Skin : keratinized stratified squamous epithelium



Lip margin

Orbicularis  
Oris

Labial glands

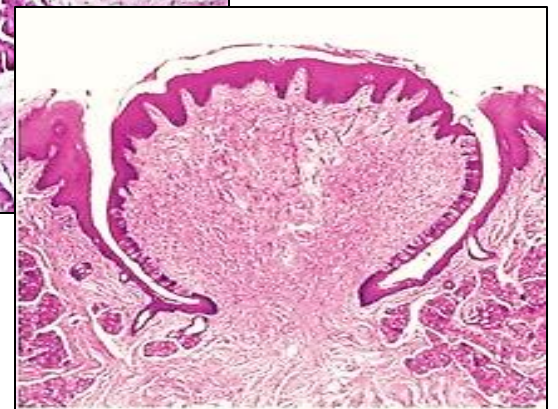
Mucous membrane:  
Non-keratinized stratified squamous epithelium

# Tongue

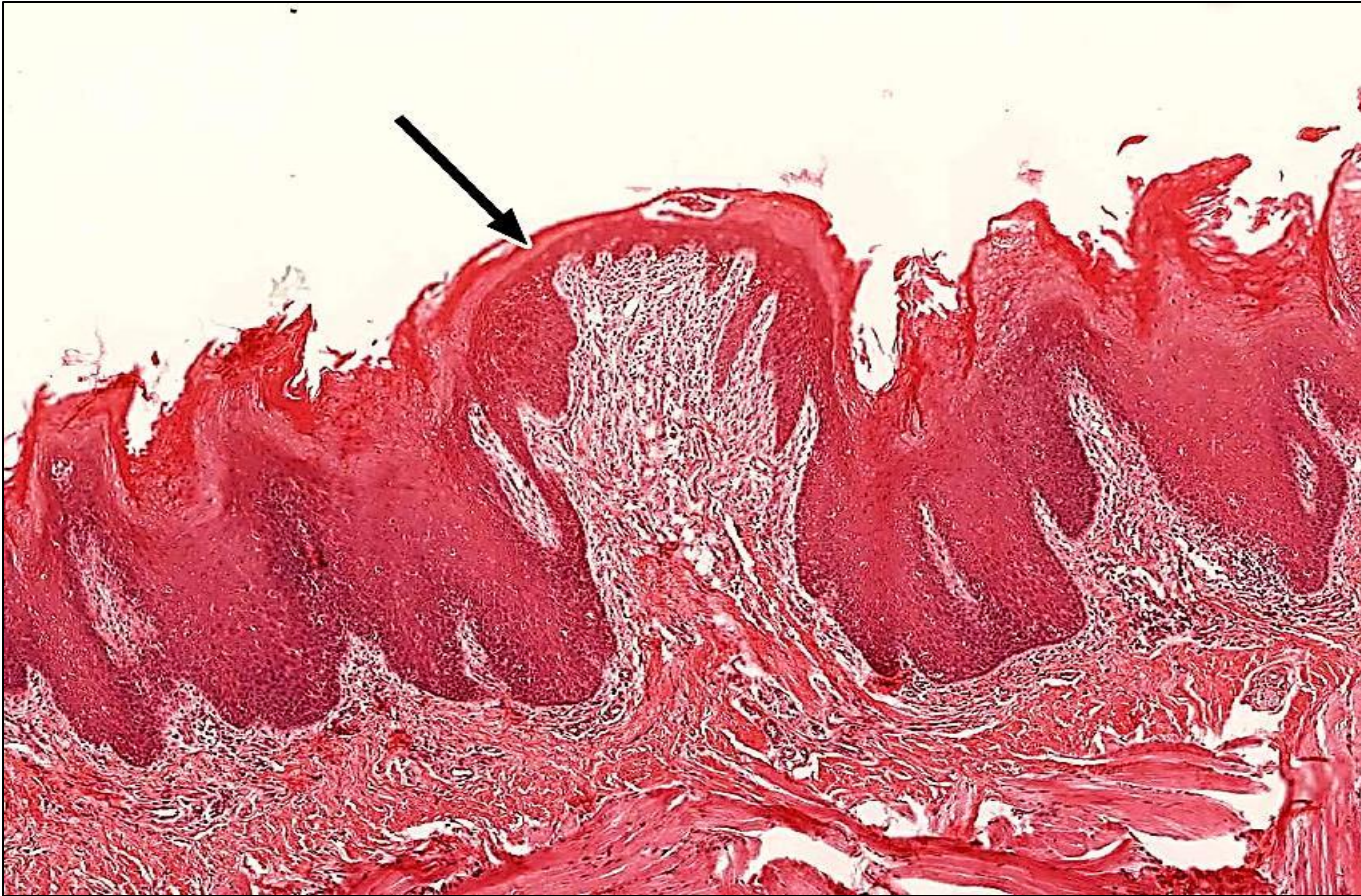




# Circumvallate papillae



# Fungiform papillae





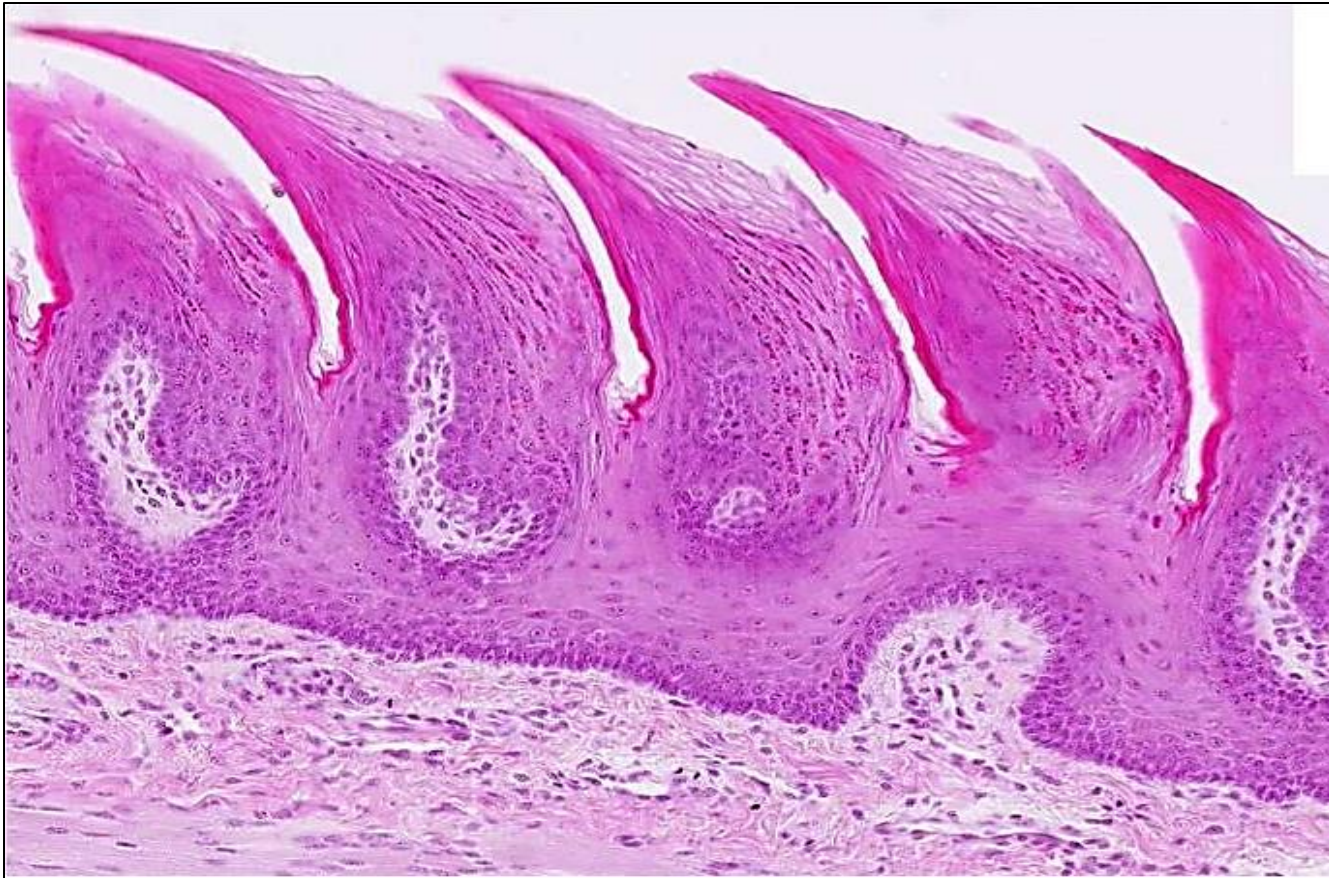
# Foliate papillae

Taste buds



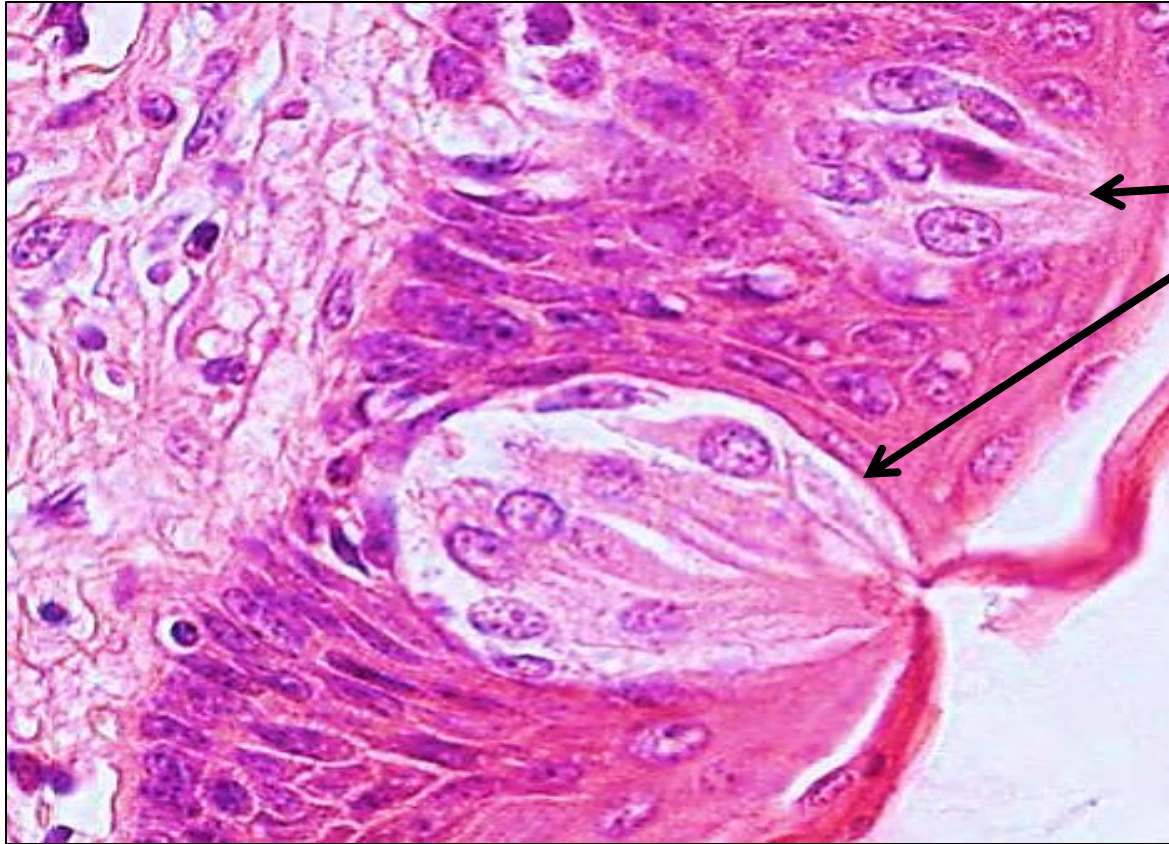
# Filiform papillae

**Epithelium : keratinized stratified squamous epithelium, No taste buds**

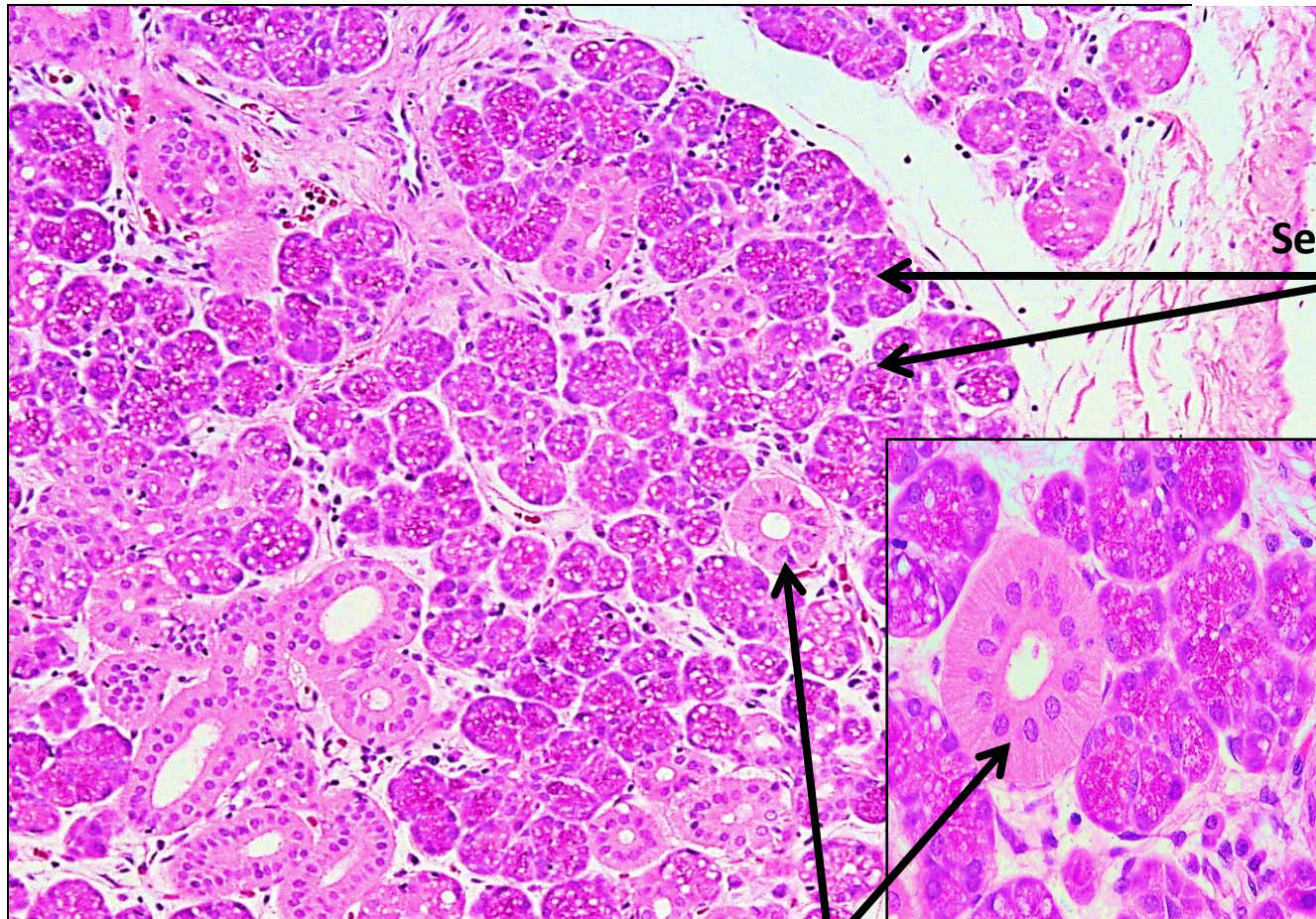
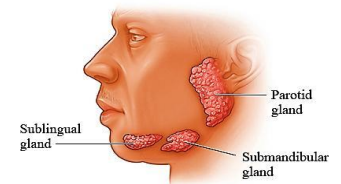




# Taste buds

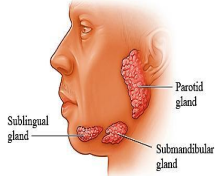


# Parotid salivary gland

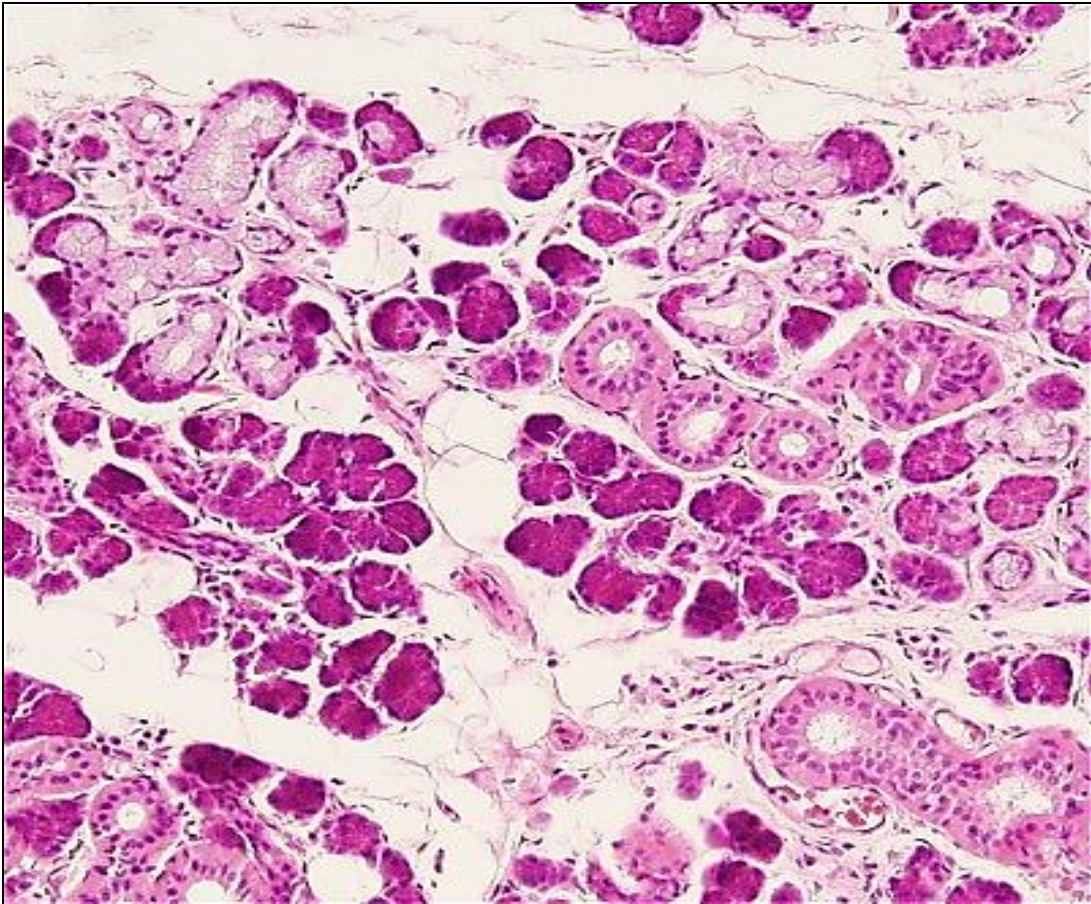




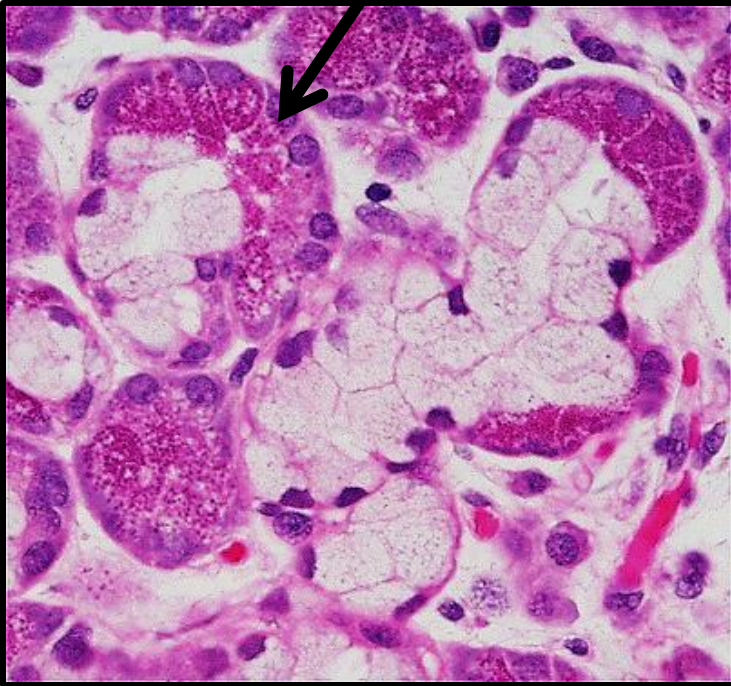
# Submandibular salivary gland



**Mixed muco-serous acini**

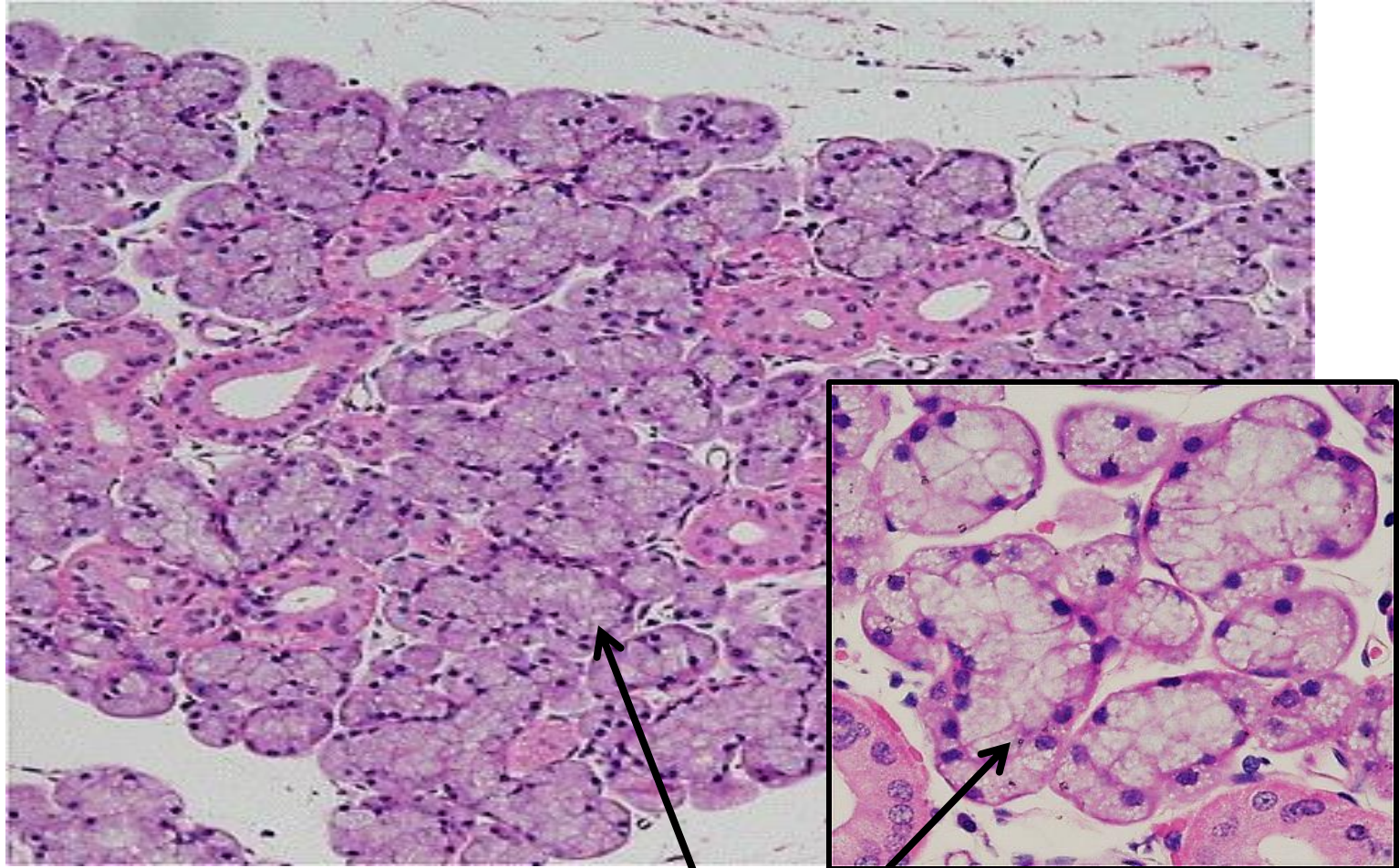


**Serous demilune (Crescent of Gianuzzi)**





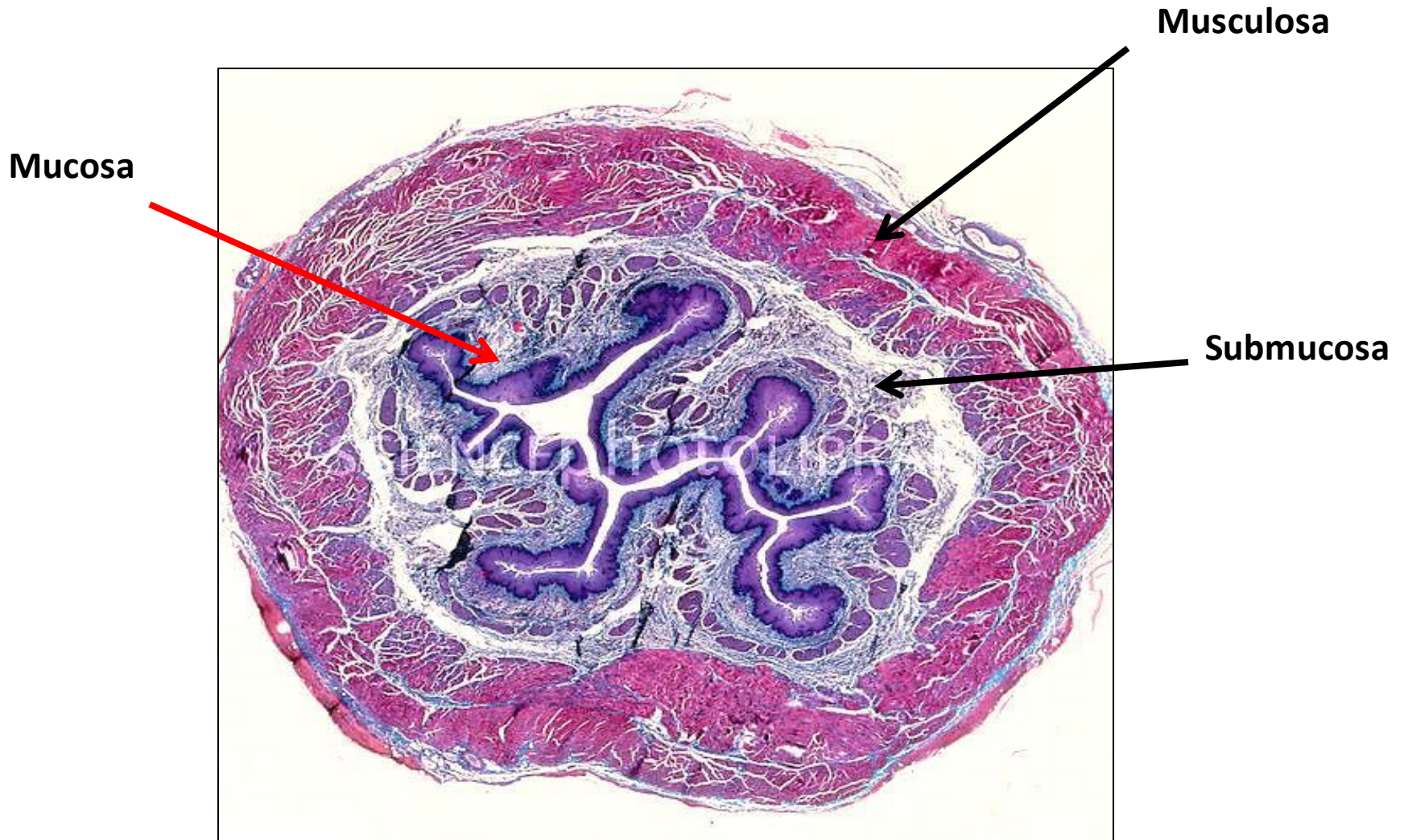
# Sublingual salivary gland



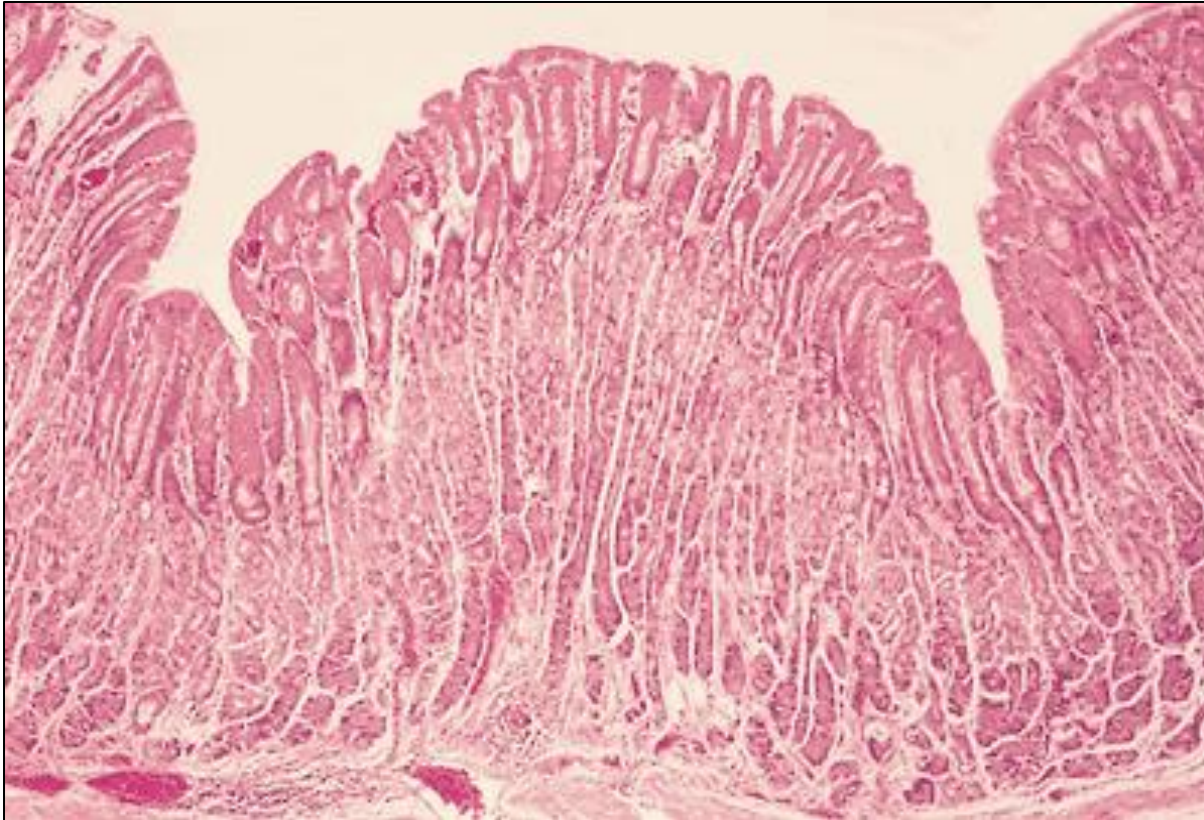
**Mucous acini**



# Esophagus



# Stomach (fundus)

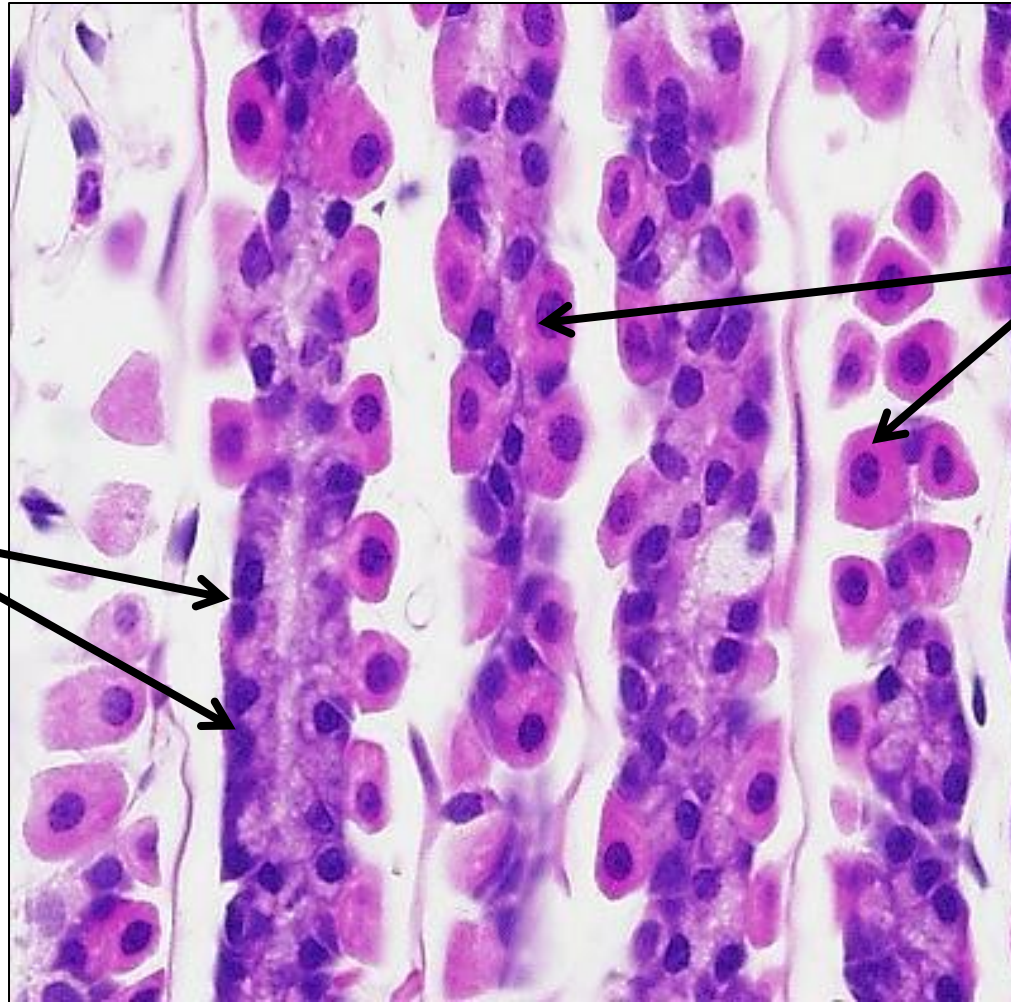


**Mucosa  
contains  
fundic glands**

- 1- Long simple branched tubular gastric glands**
- 2- short gastric pits**



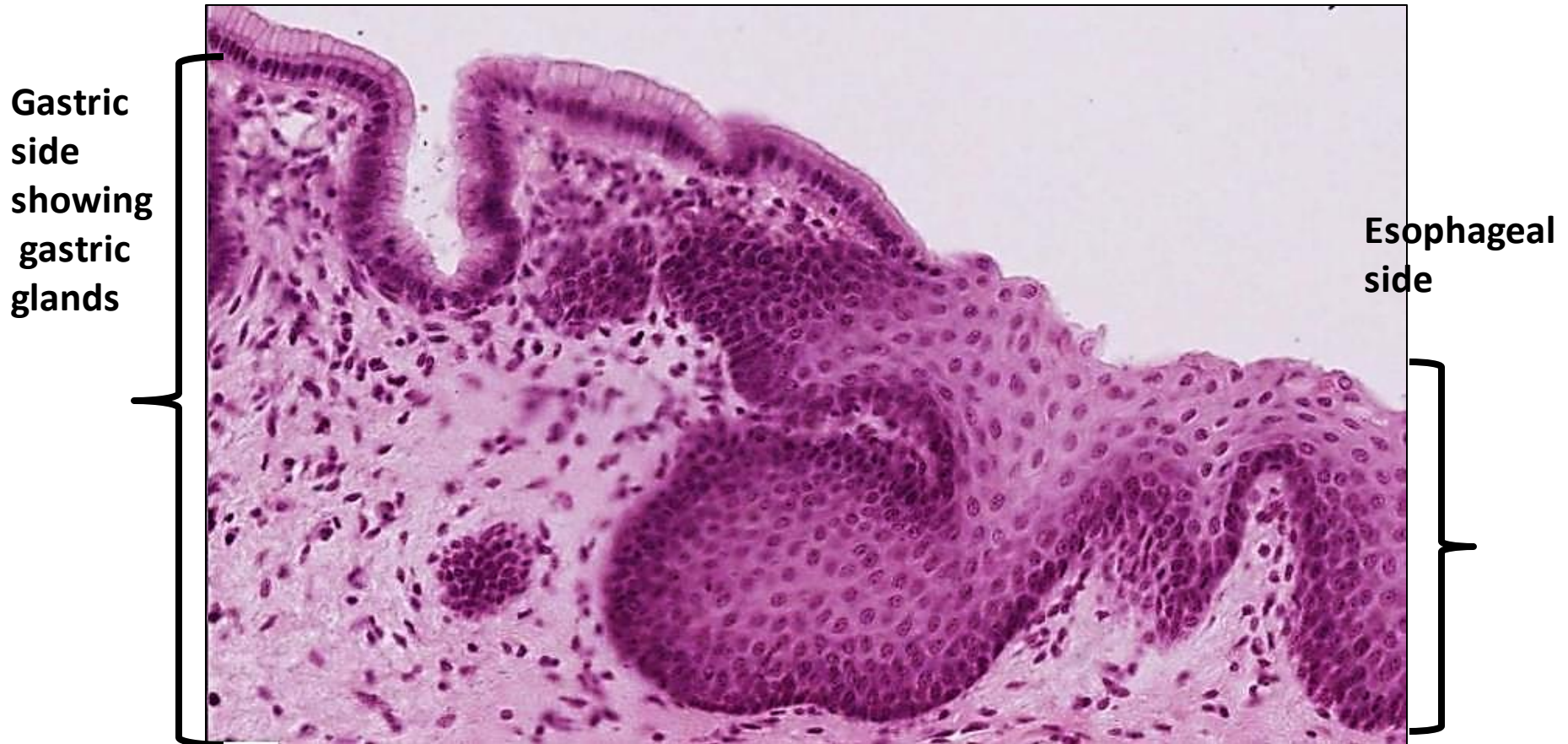
# Stomach ( fundic glands)



Chief (peptic)  
cells

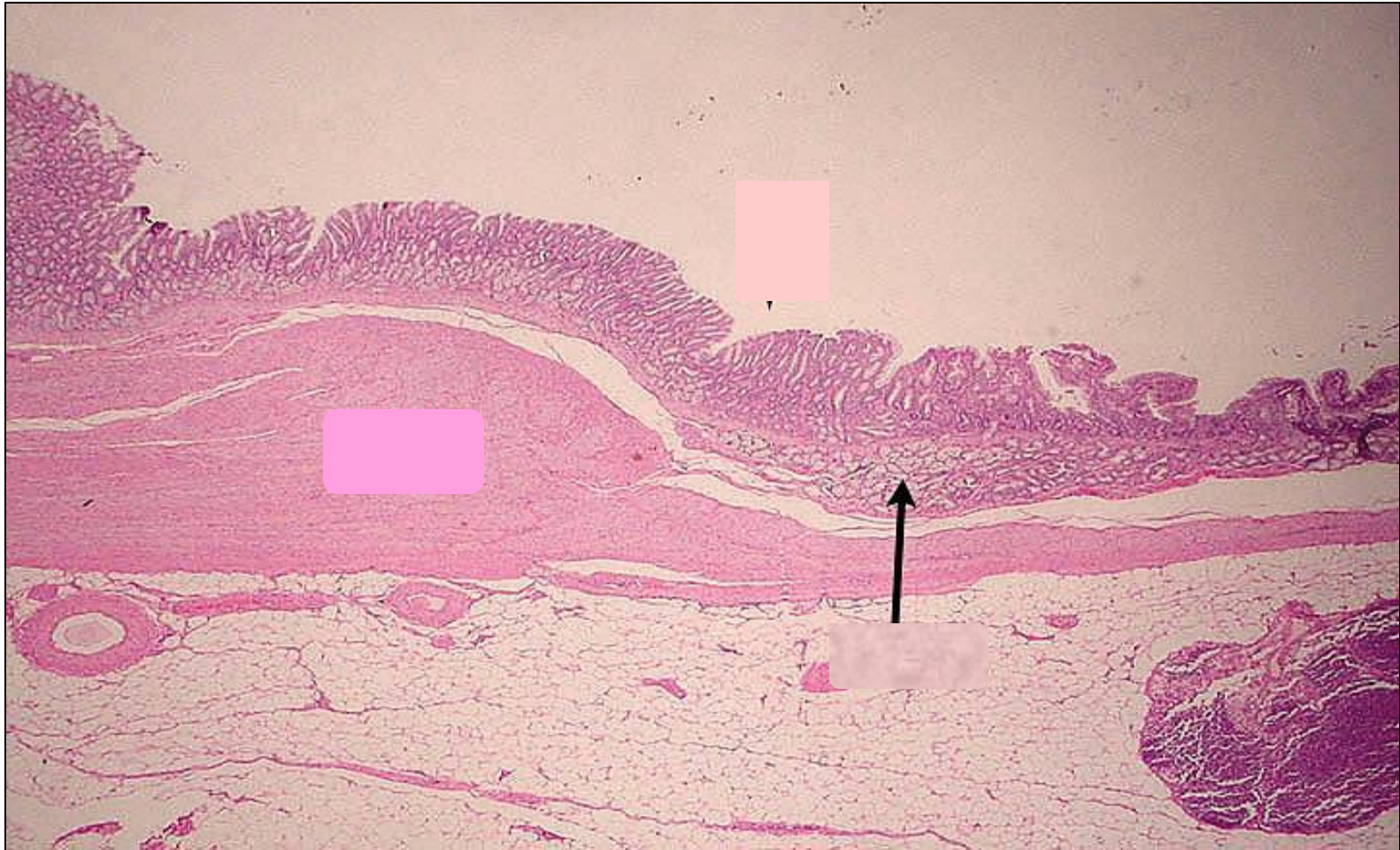
Parietal (oxyntic)  
cells

# Gastro- esophageal junction



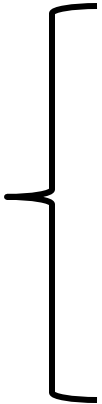


# Gastro- duodenal junction



# Recto anal junction

Anal side  
showing non  
keratinized  
stratified  
squamous  
epith



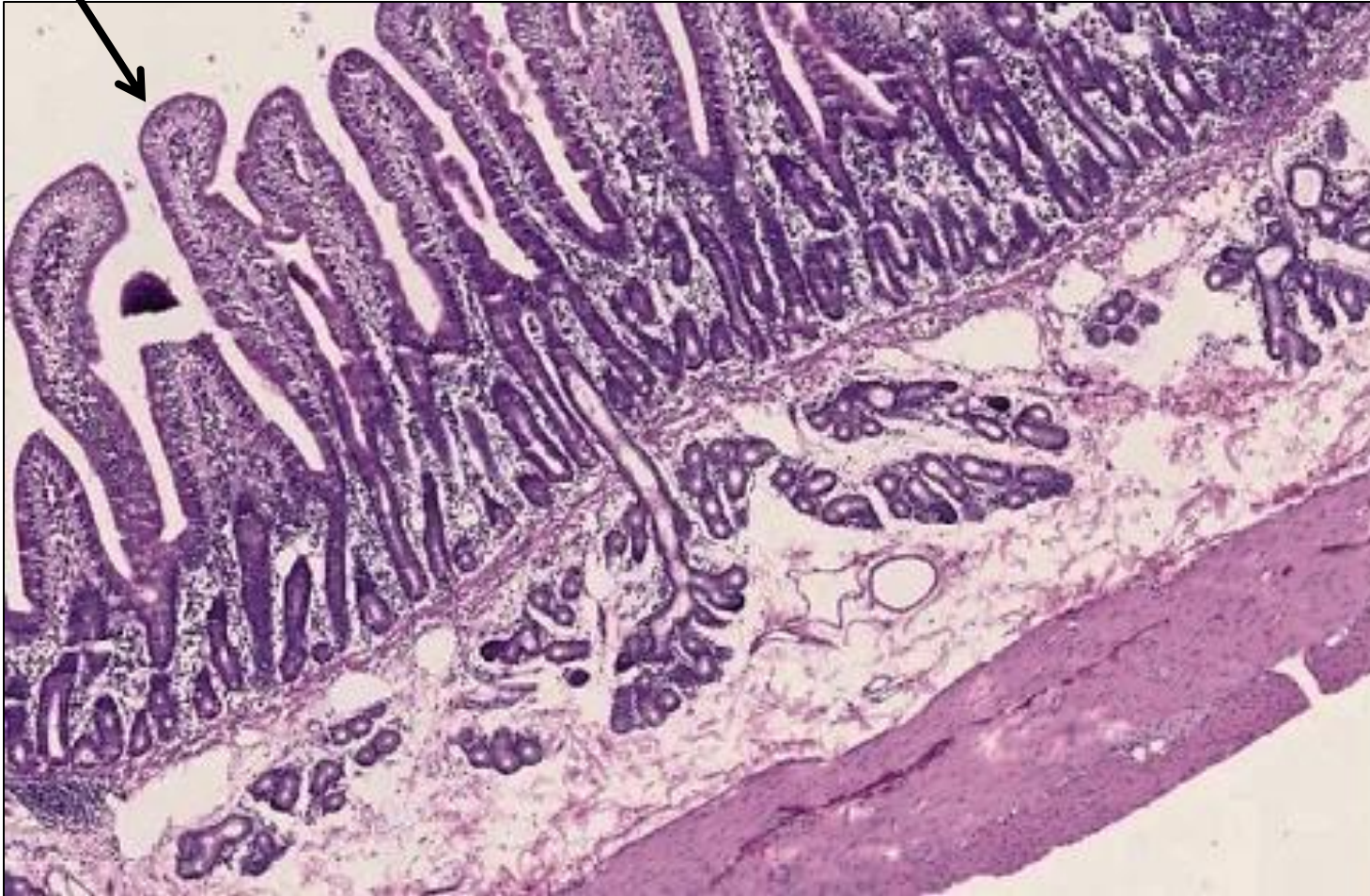
Rectum  
side  
showing  
intestinal  
glands





Intestinal villi

# duodenum



Submucosa  
showing  
Brunner's  
glands



# Duodenum

## Intestinal villi & crypts



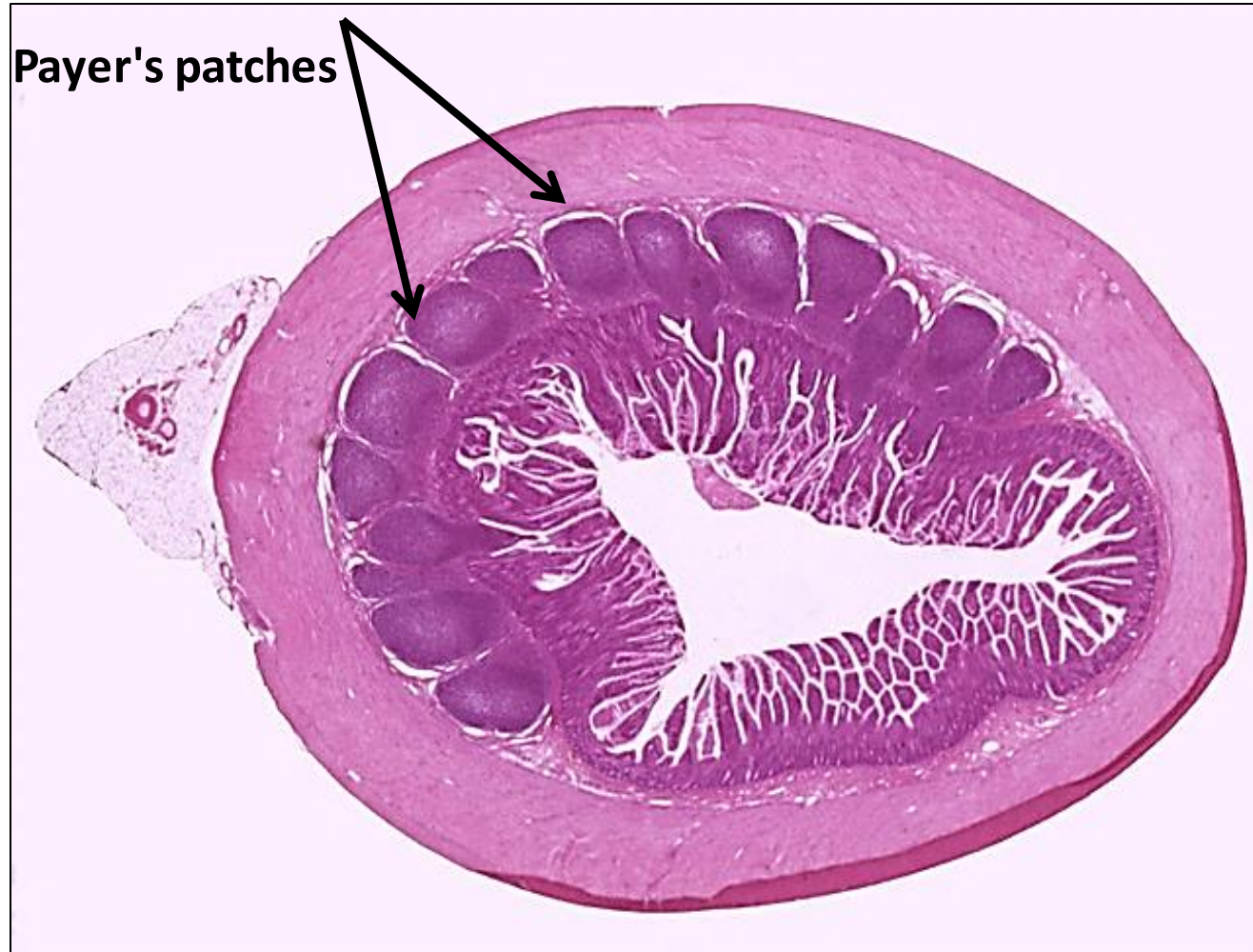


# Colon



**Intestinal crypts  
contain numerous  
goblet cells**

# ileum

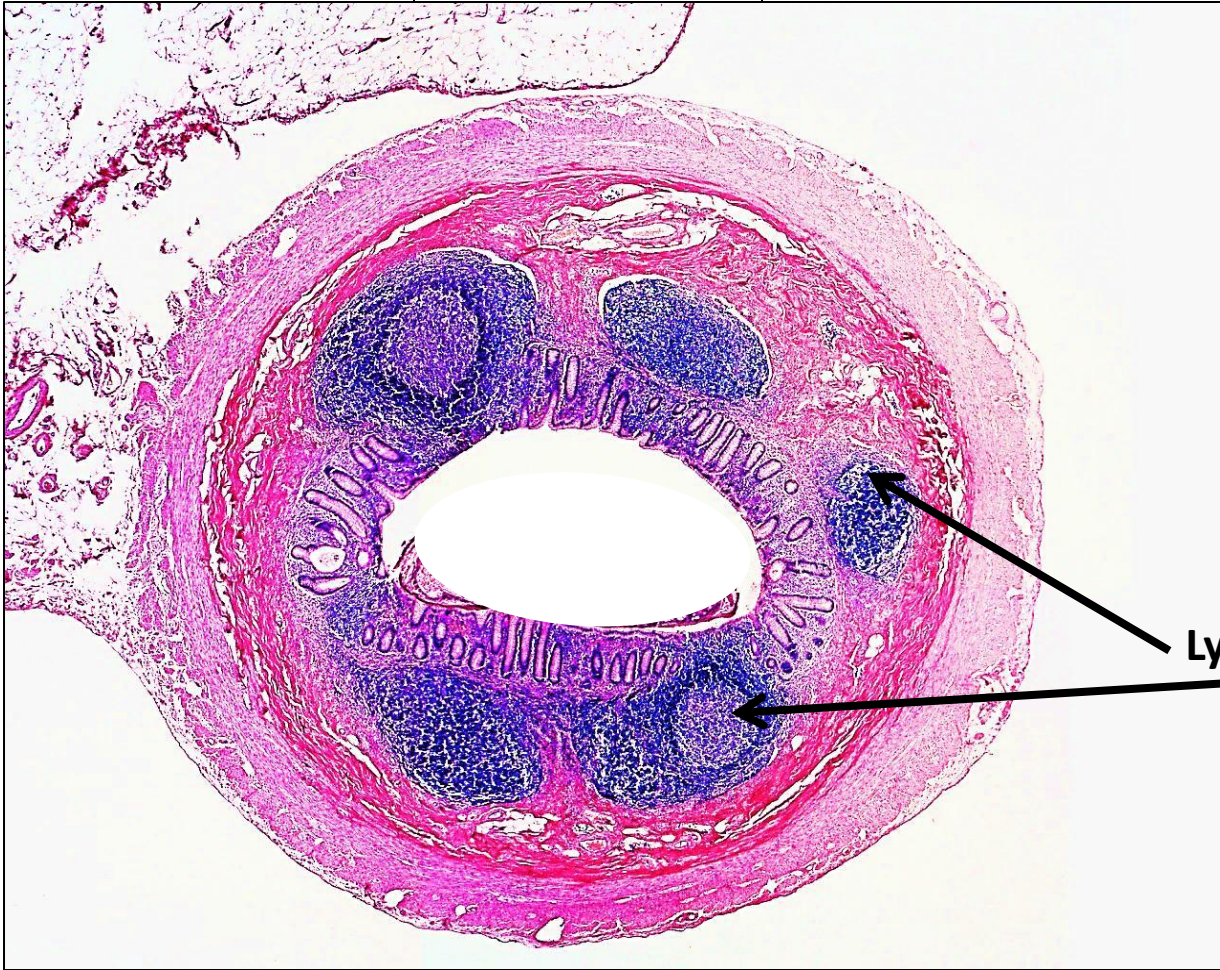




# Colon- taenia coli



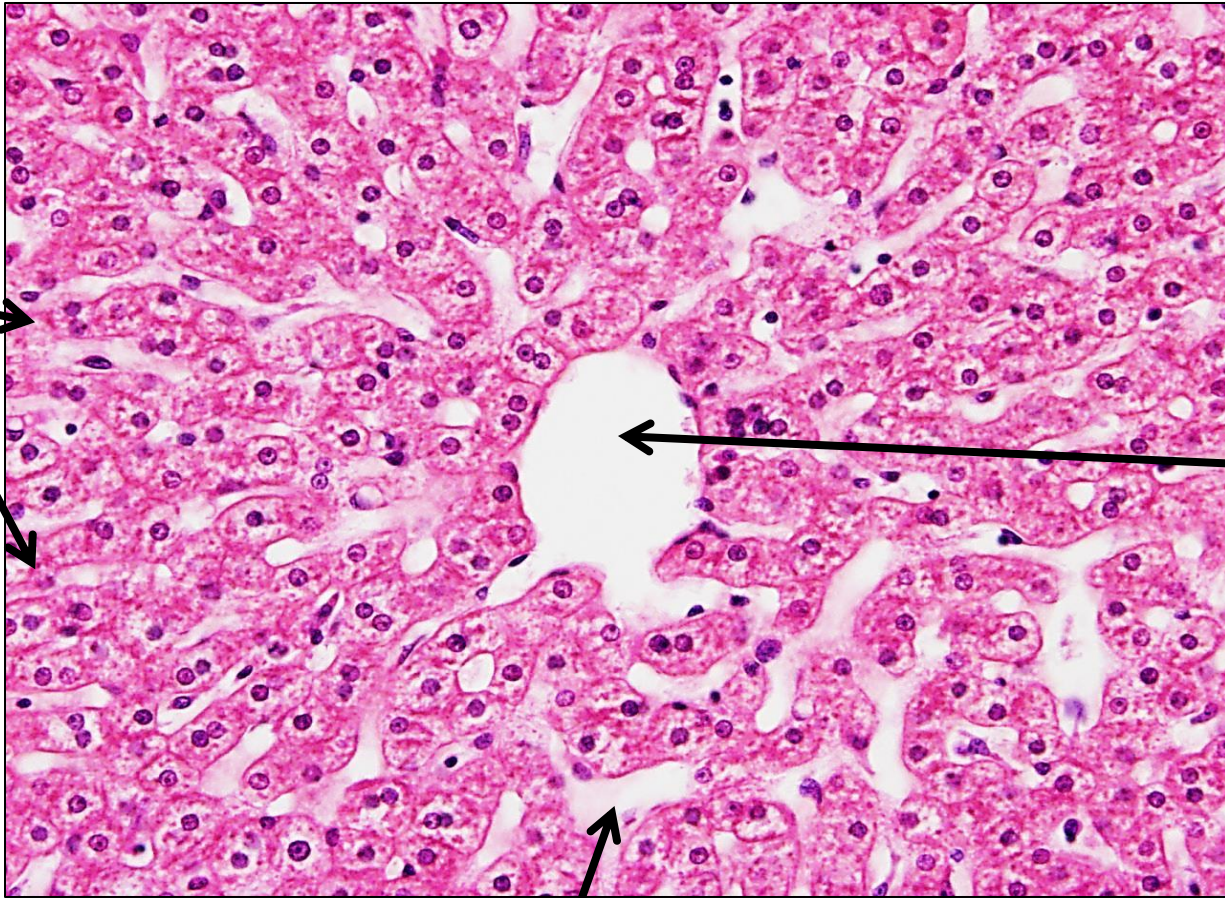
# Appendix



Lymphoid follicles



# Liver



**Cords of  
liver cells**

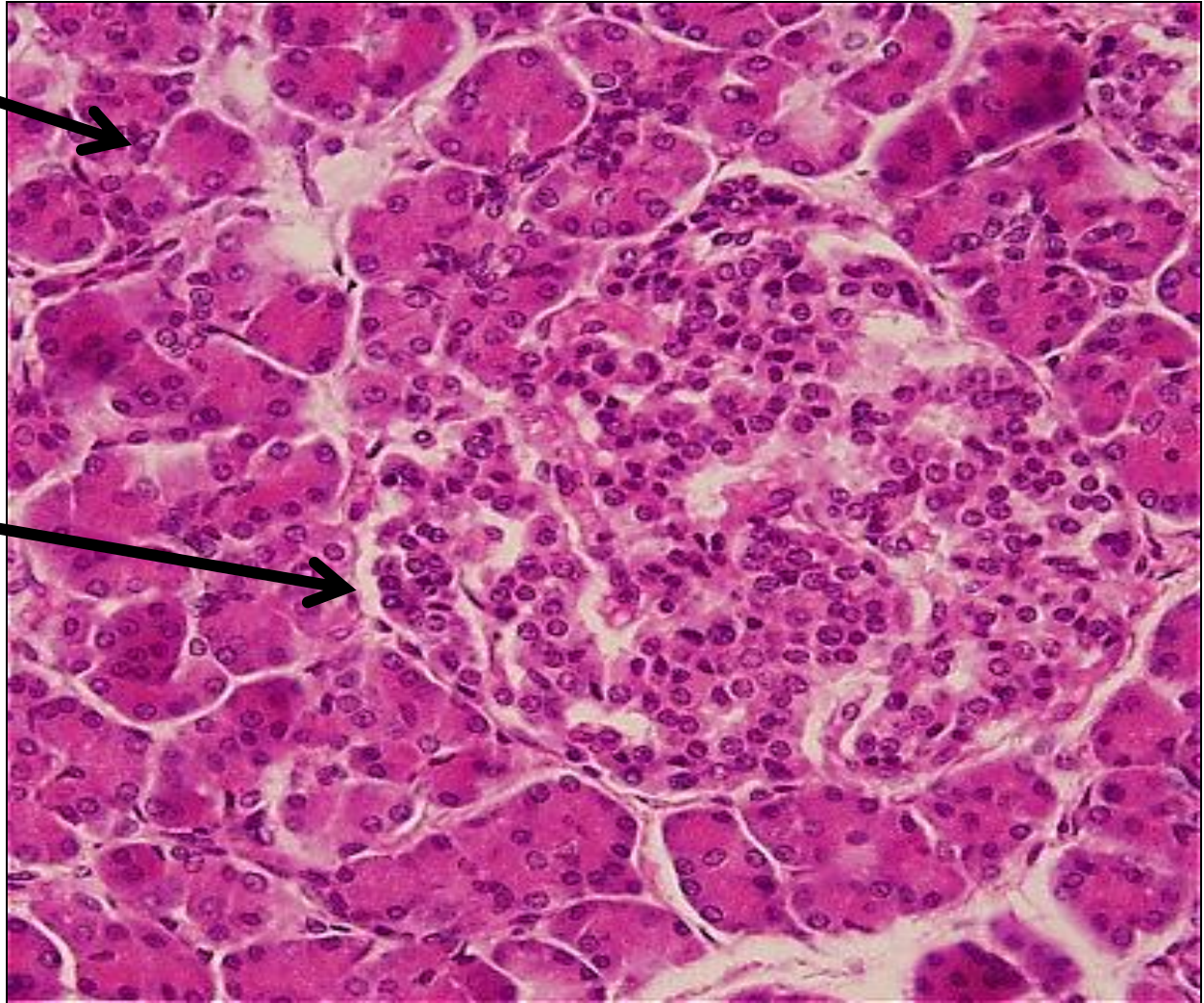
**Central vein**

**Liver sinusoids**



# Pancreas

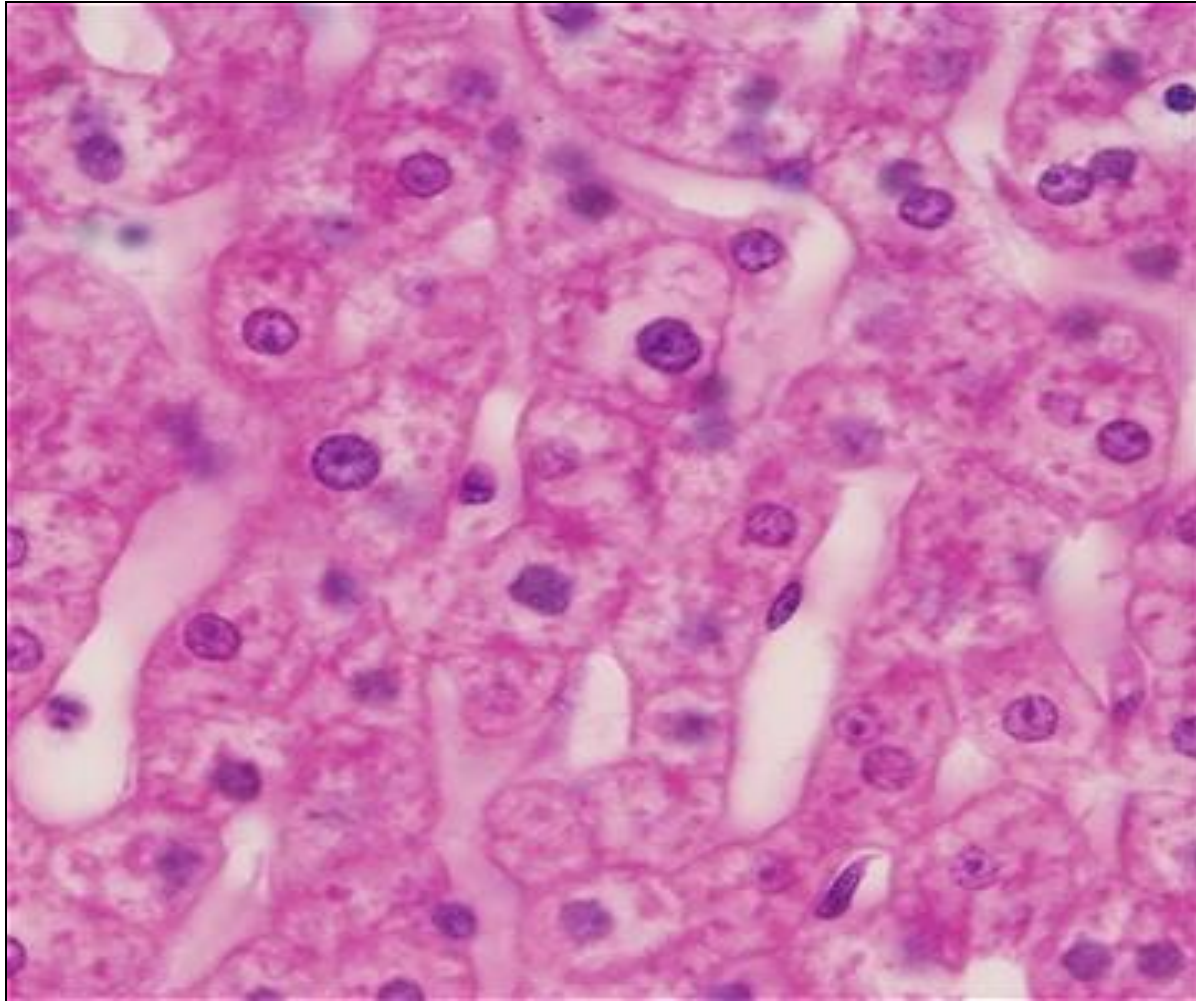
Exocrine pancreas



Islets of Langerhans







## Hepatocytes

# Thank you

