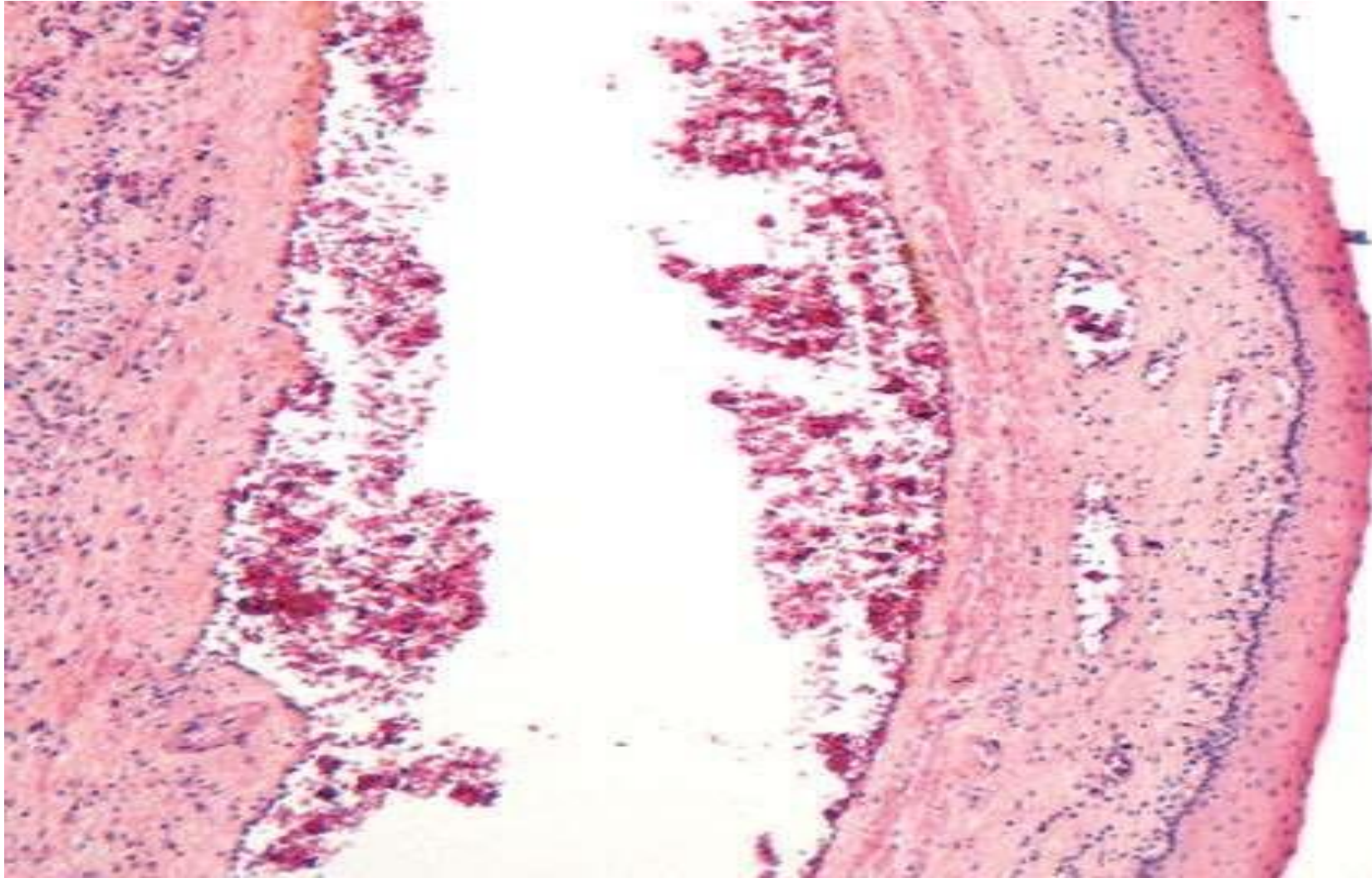
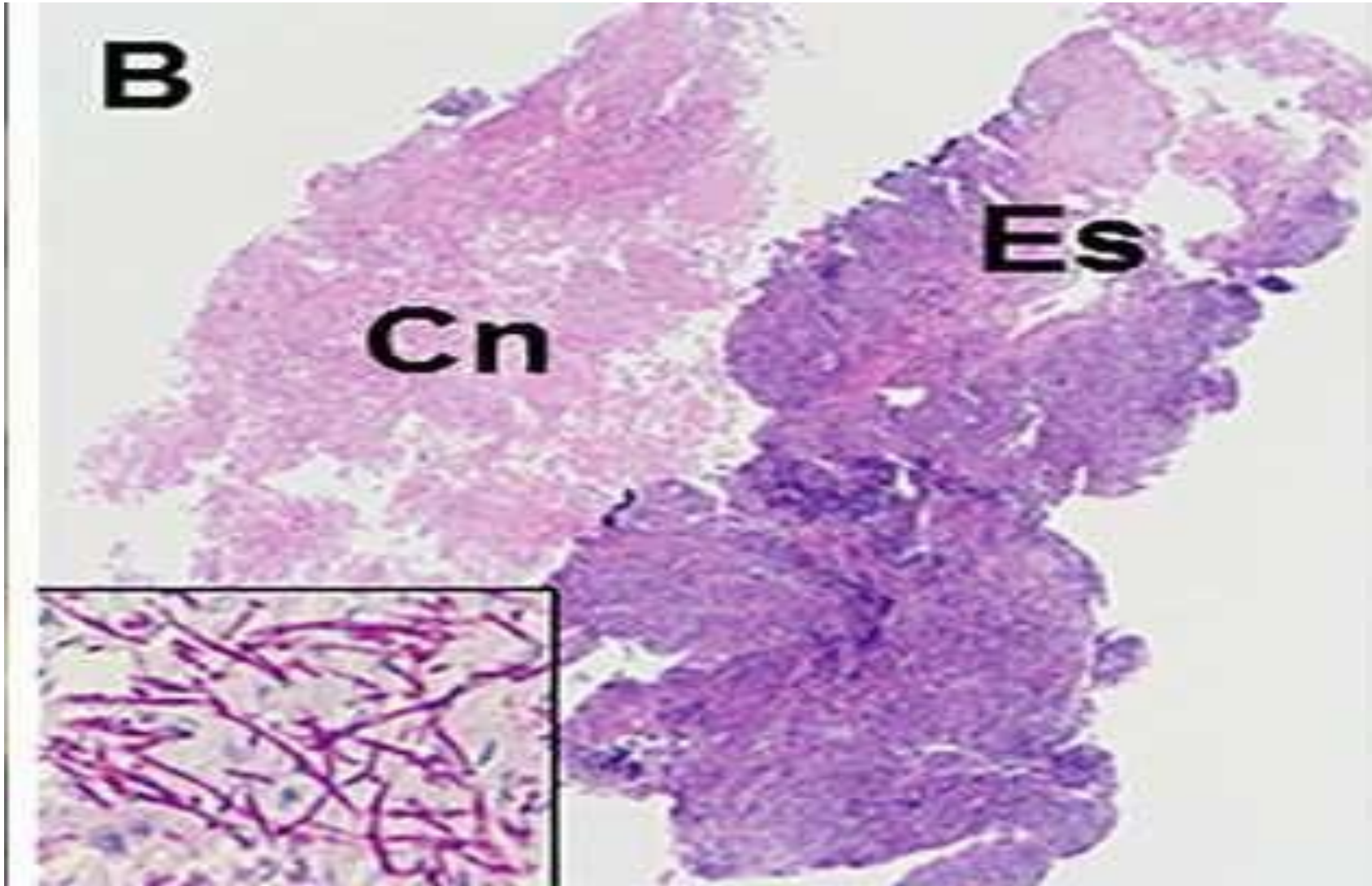


Source: Longo DL, Fauci AS, Kasper DL, Hauser SL, Jameson JL, Loscalzo J: *Harrison's Principles of Internal Medicine, 18th Edition*: www.accessmedicine.com

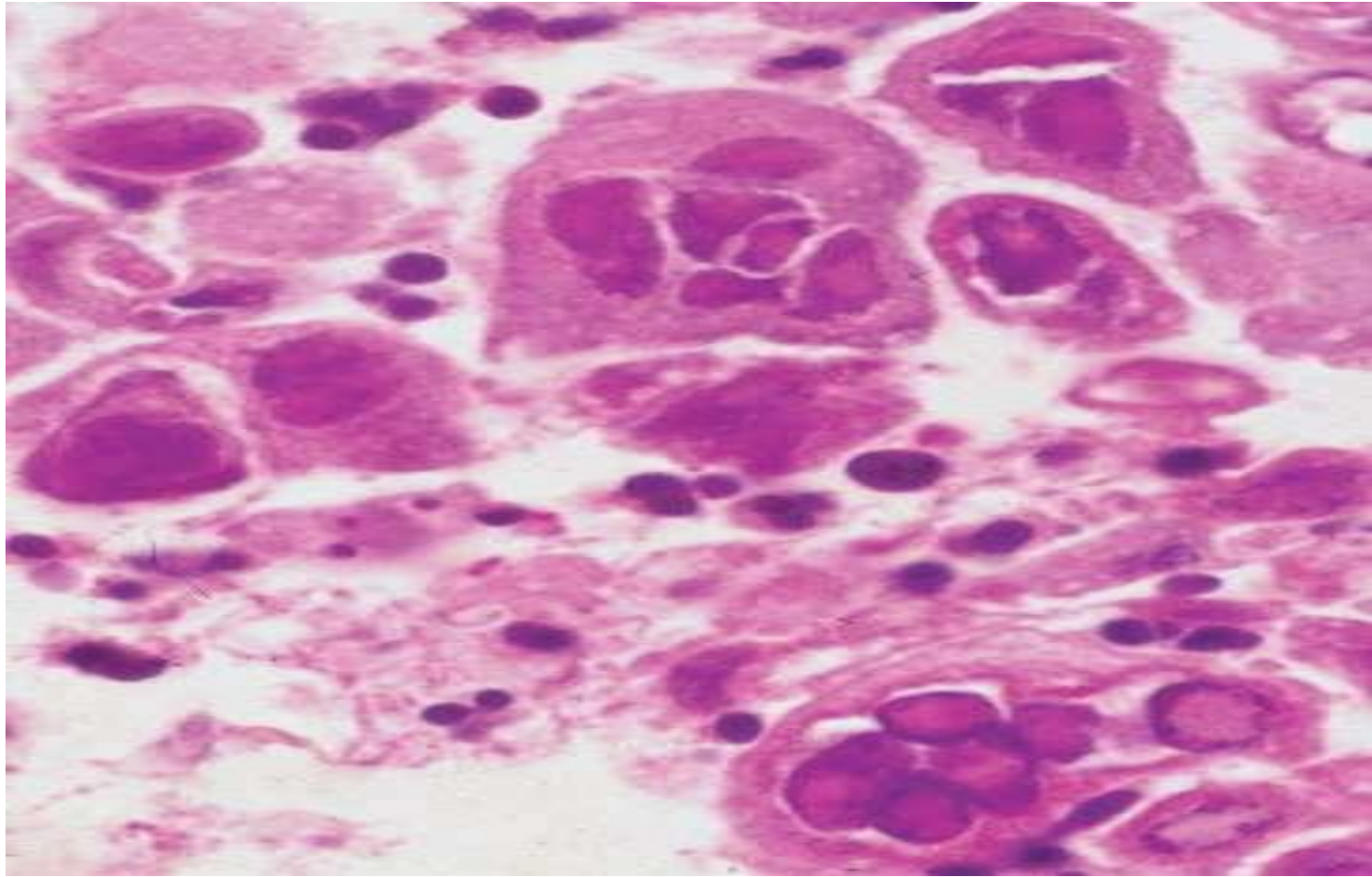
Copyright © The McGraw-Hill Companies, Inc. All rights reserved.

Dilated varices beneath intact squamous mucosa

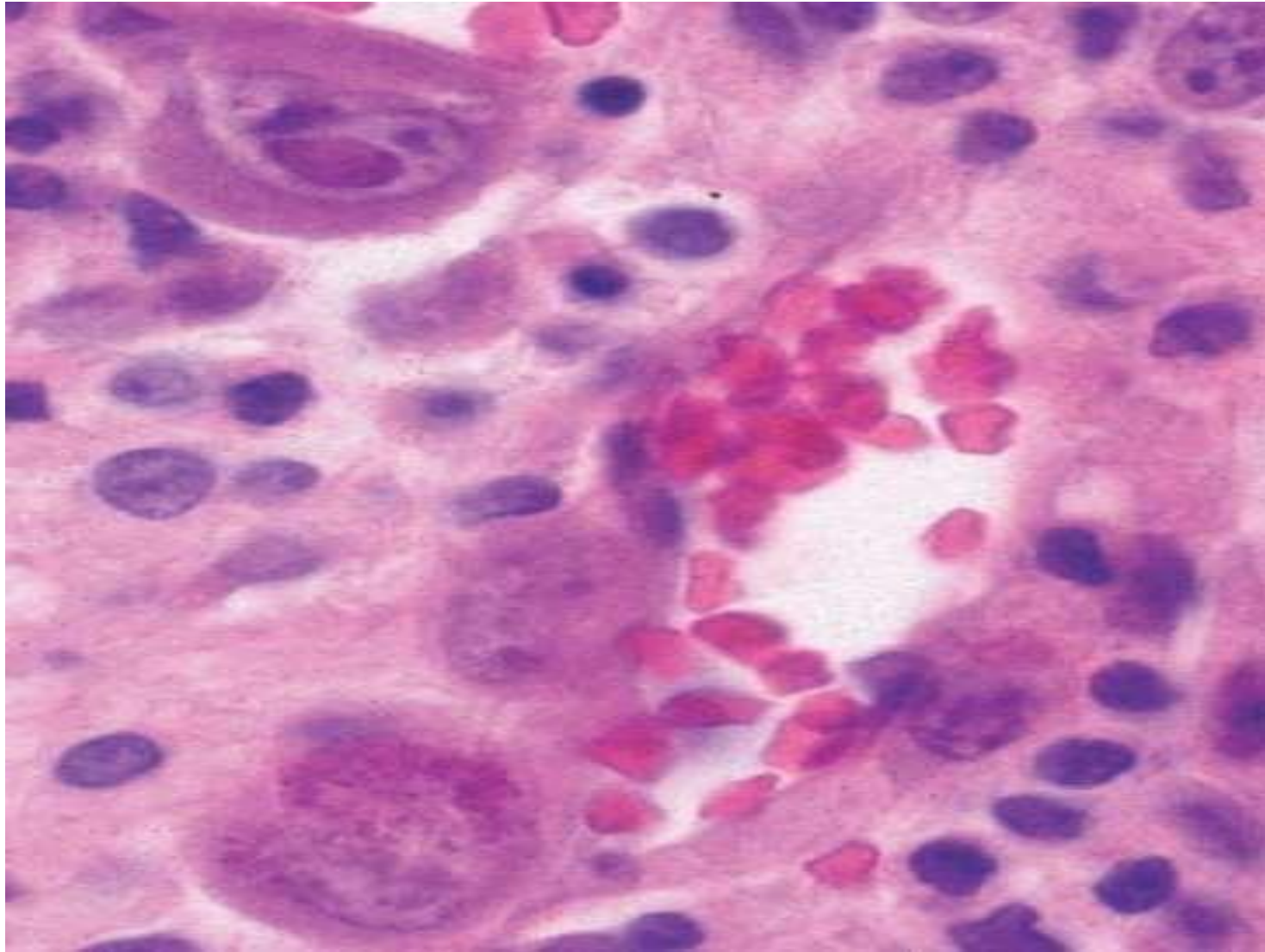


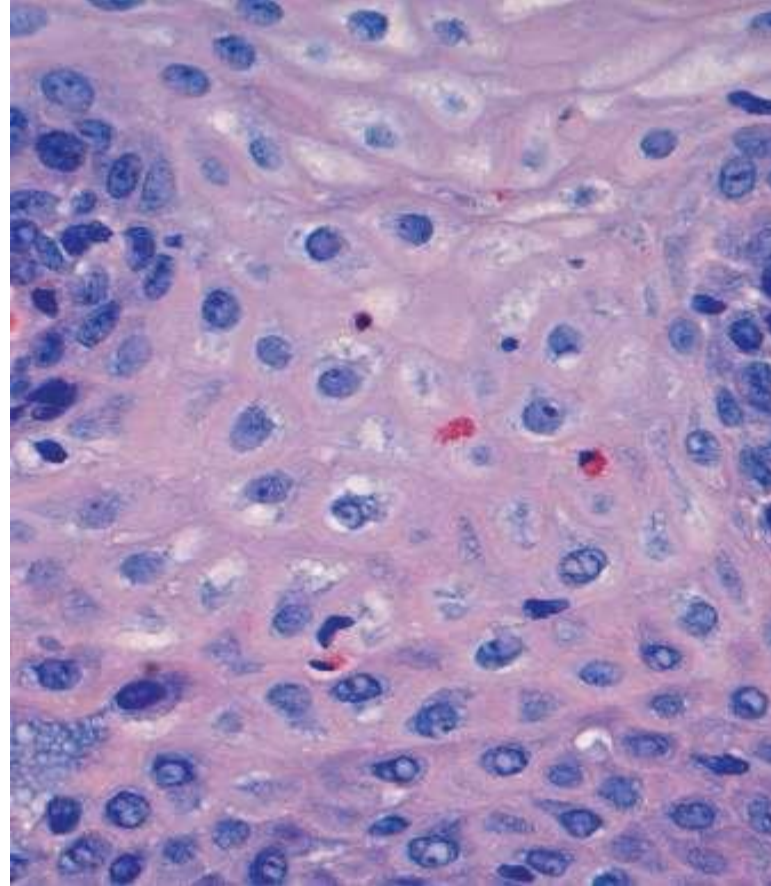
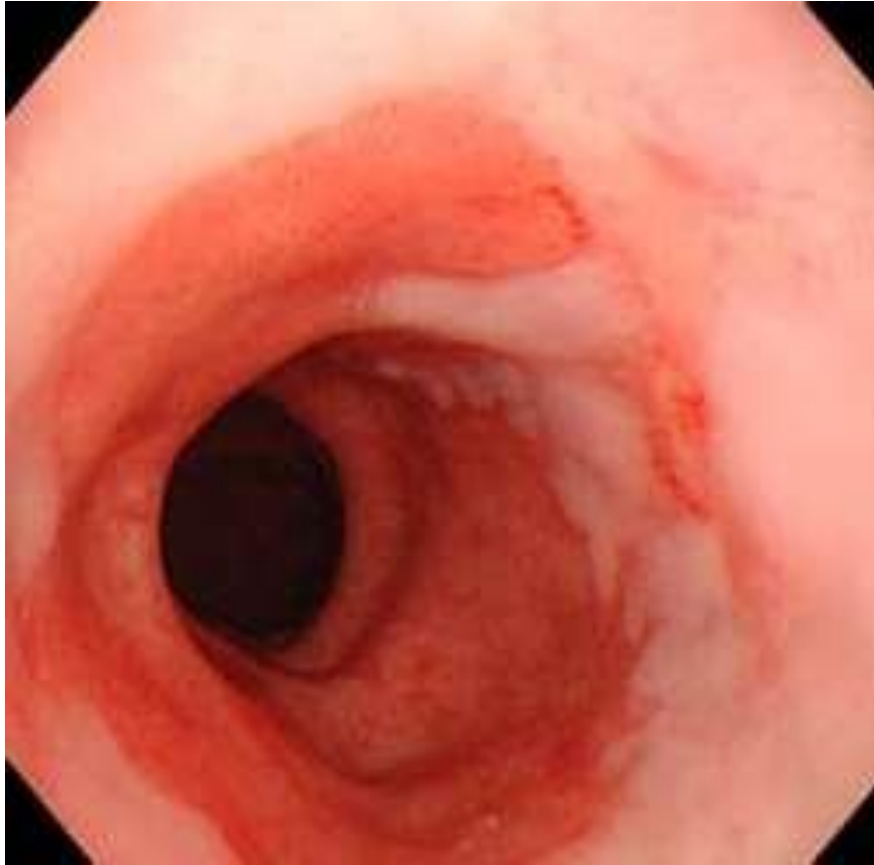


www.researchgate.net/publication/285369734_Esophageal_Candidiasis_as_the_Initial_Manifestation_of_Acute_Myeloid_Leukemia



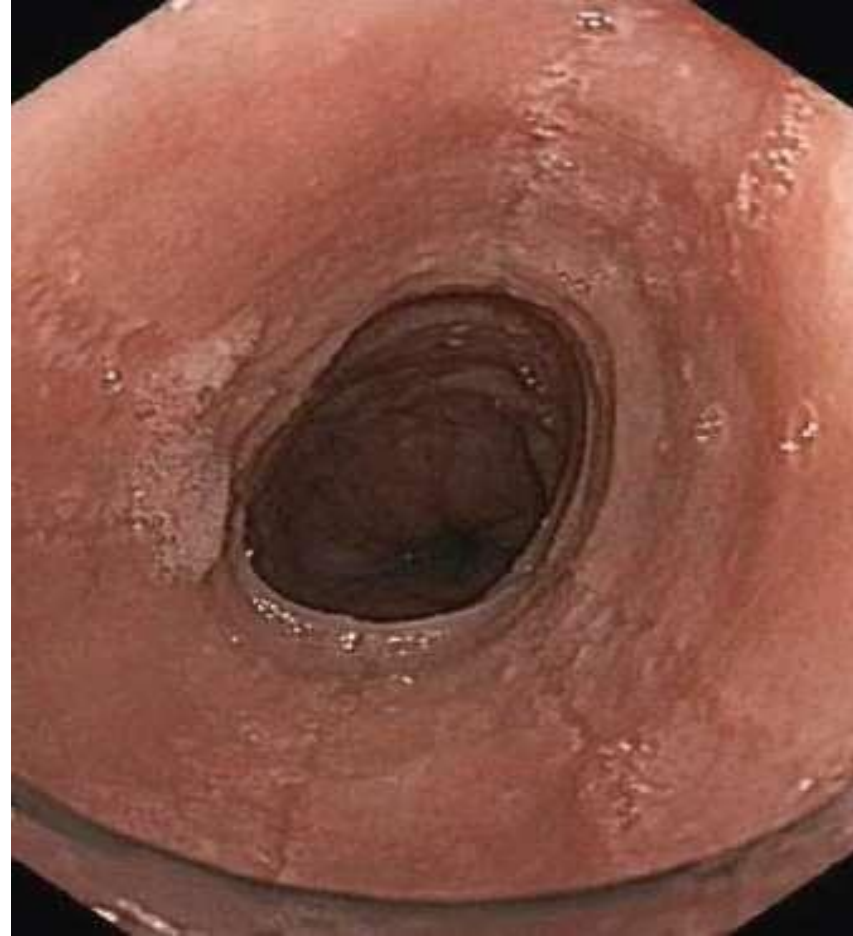
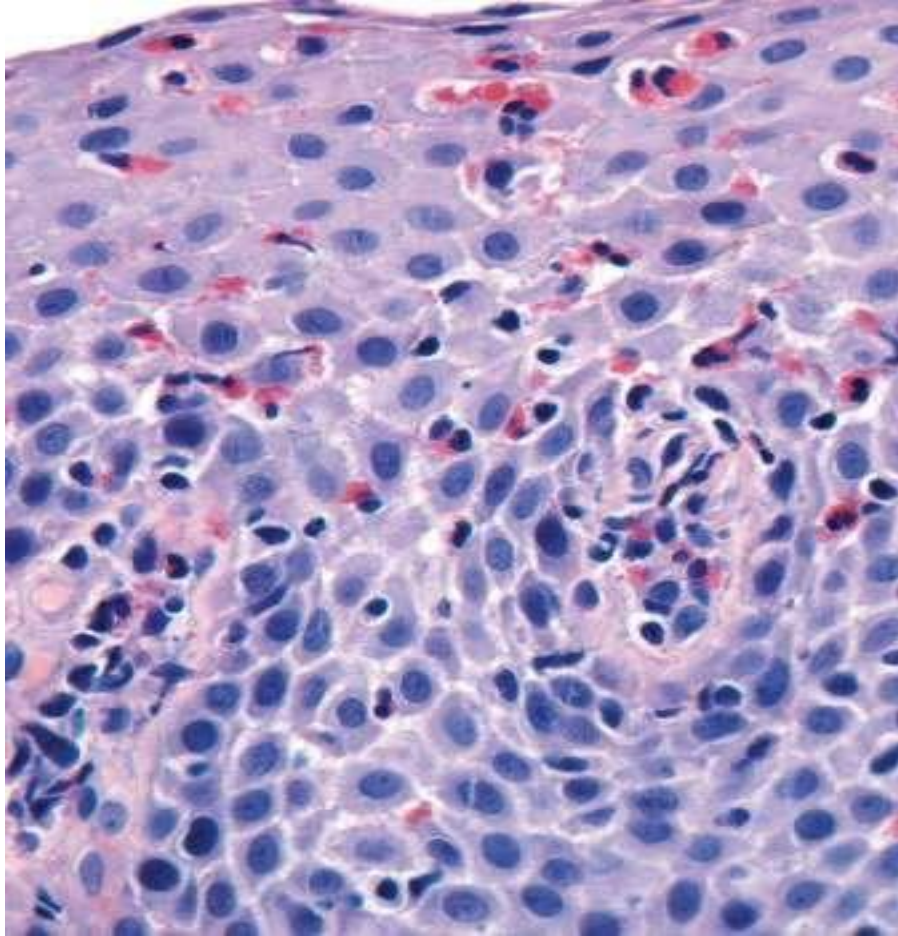
Robbins Basic Pathology 10th edition





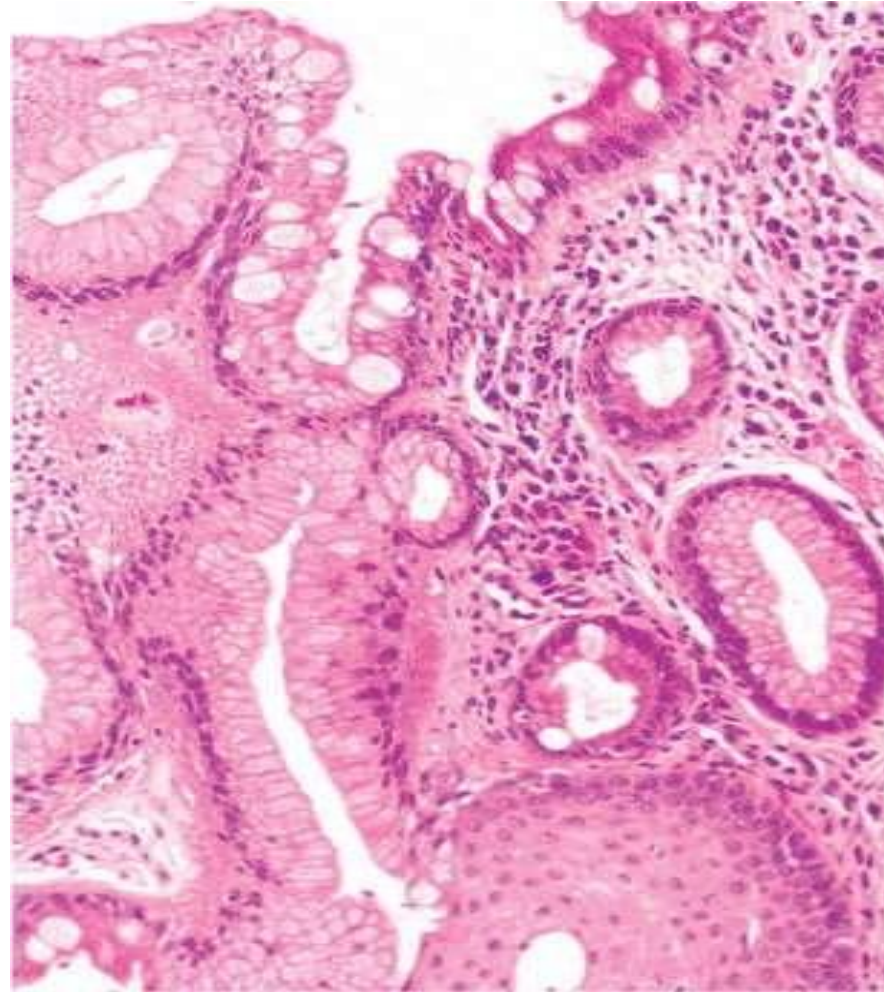
[nature.com](https://www.nature.com)

Robbins Basic Pathology 10th edition

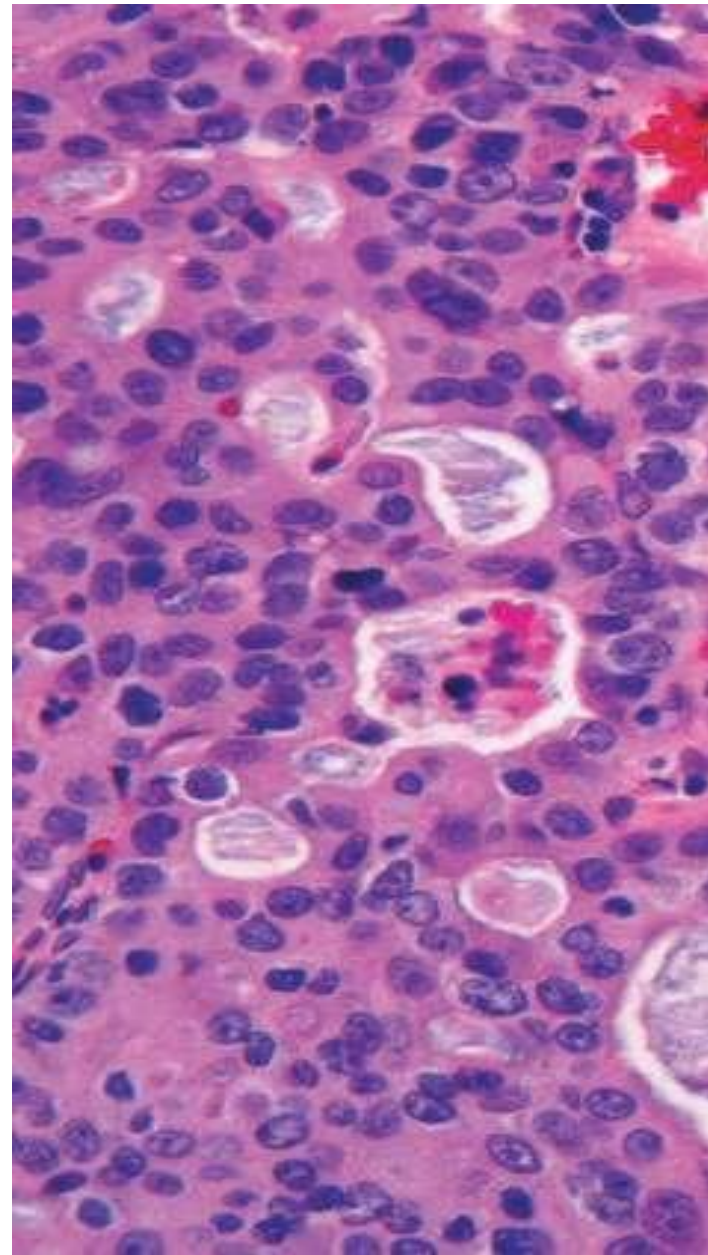


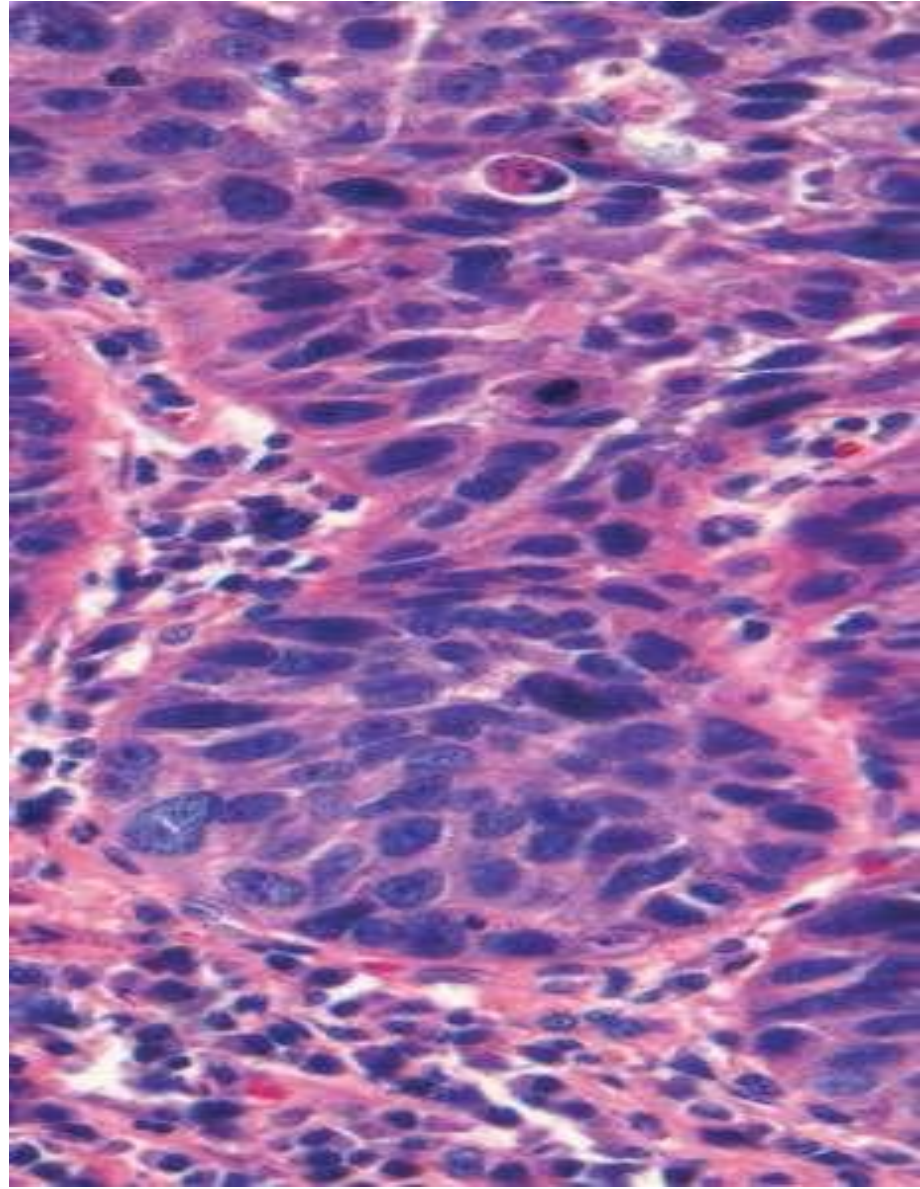


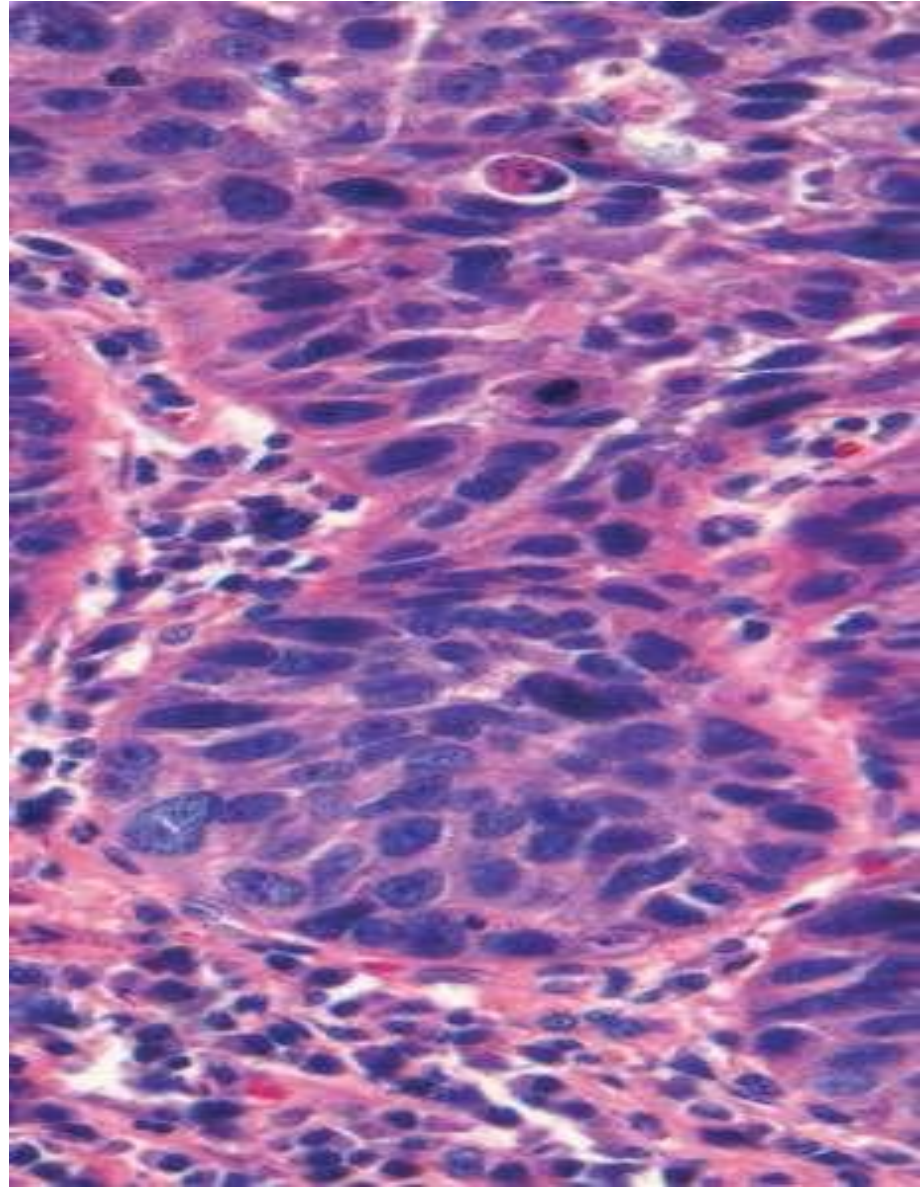
[Gastroenterology Consultants of San Antonio](#)



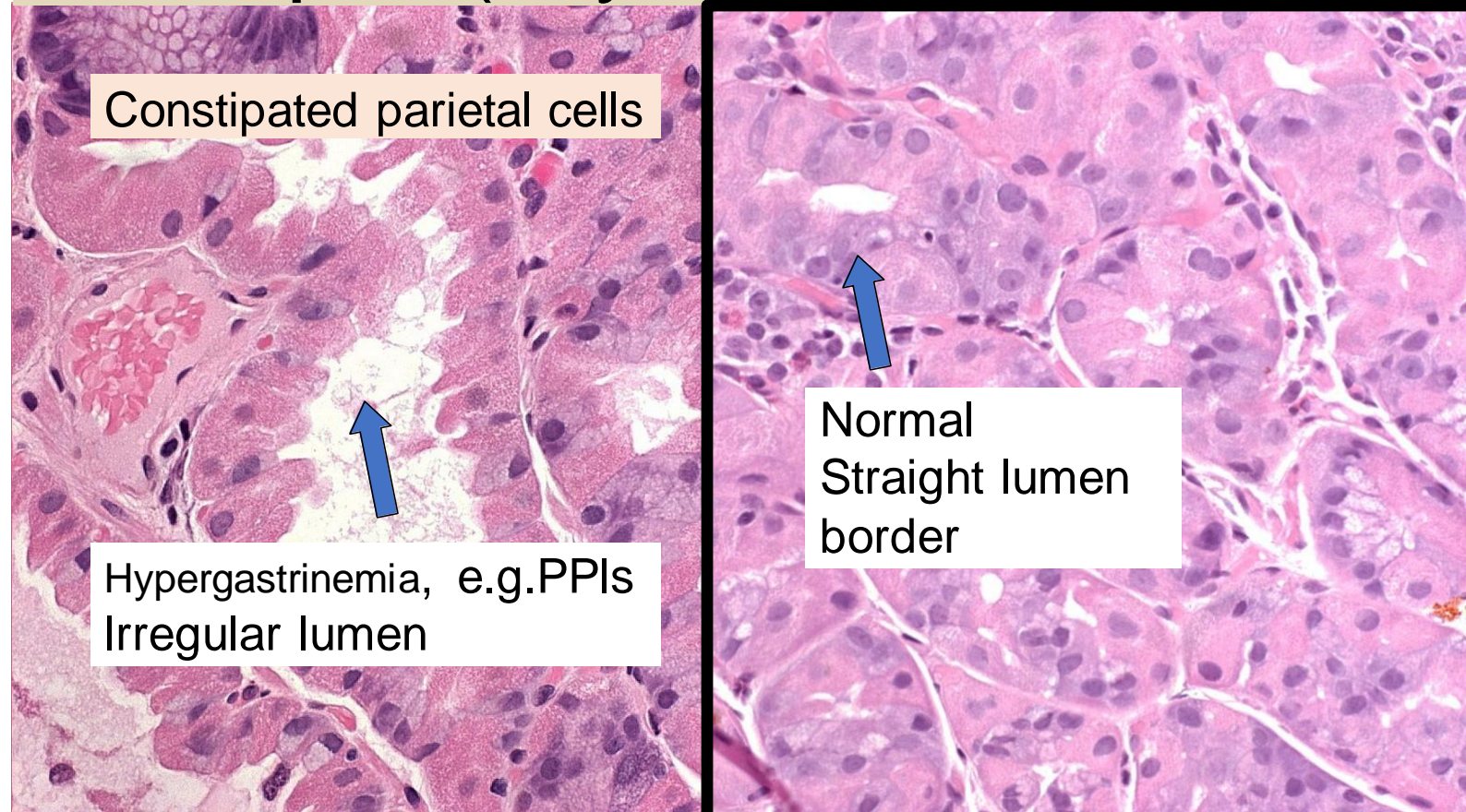
Robbins Basic Pathology 10th edition

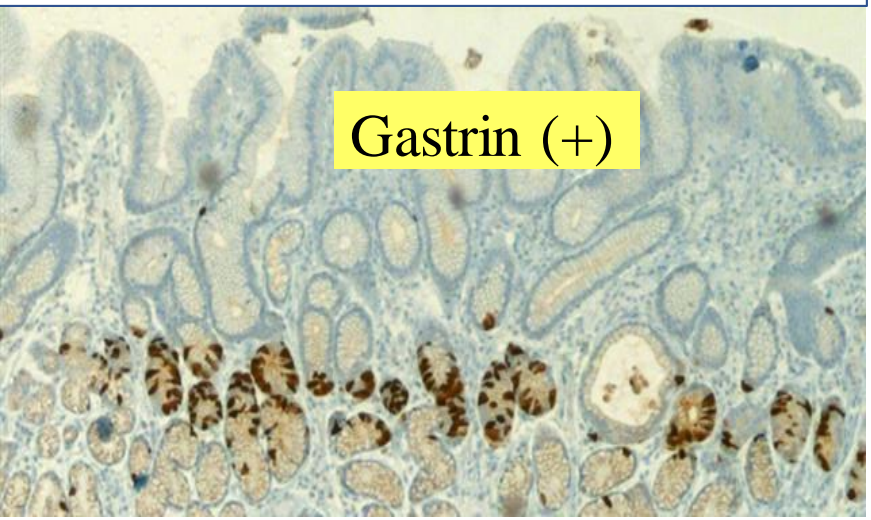
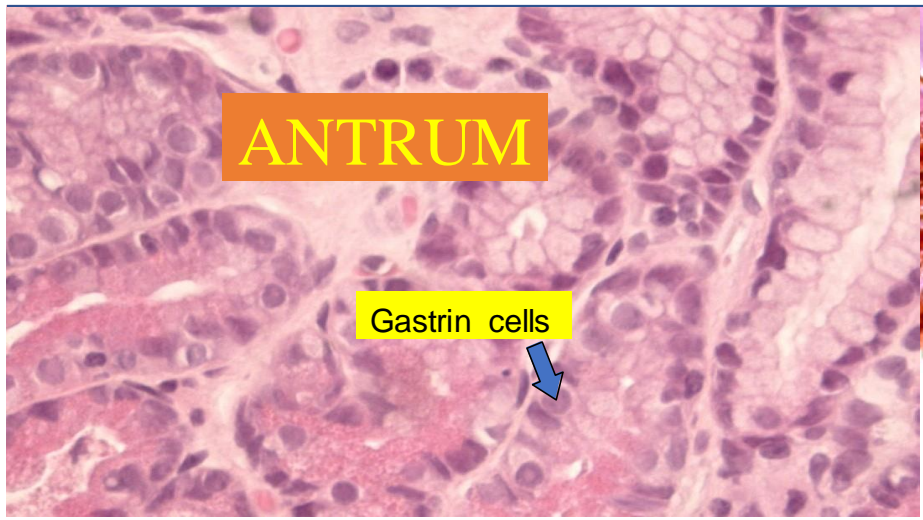
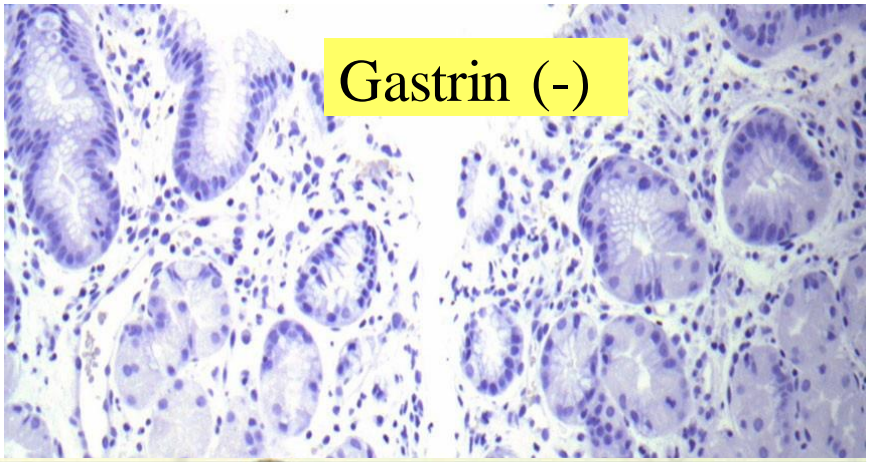
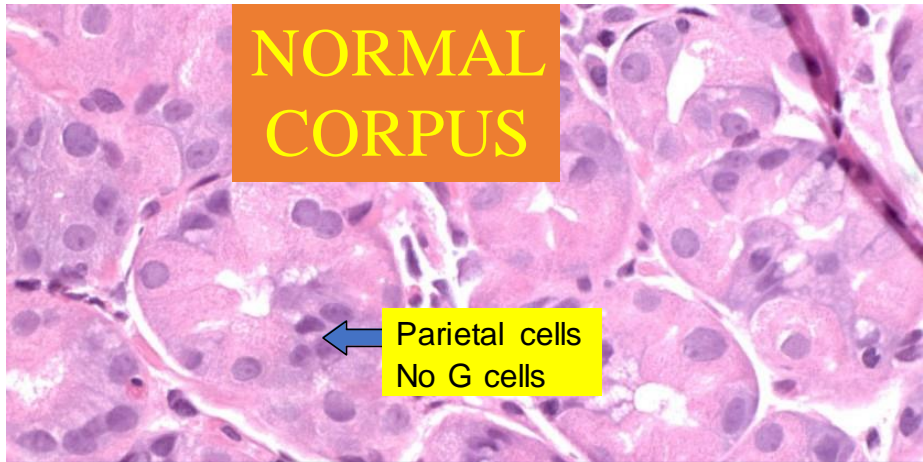




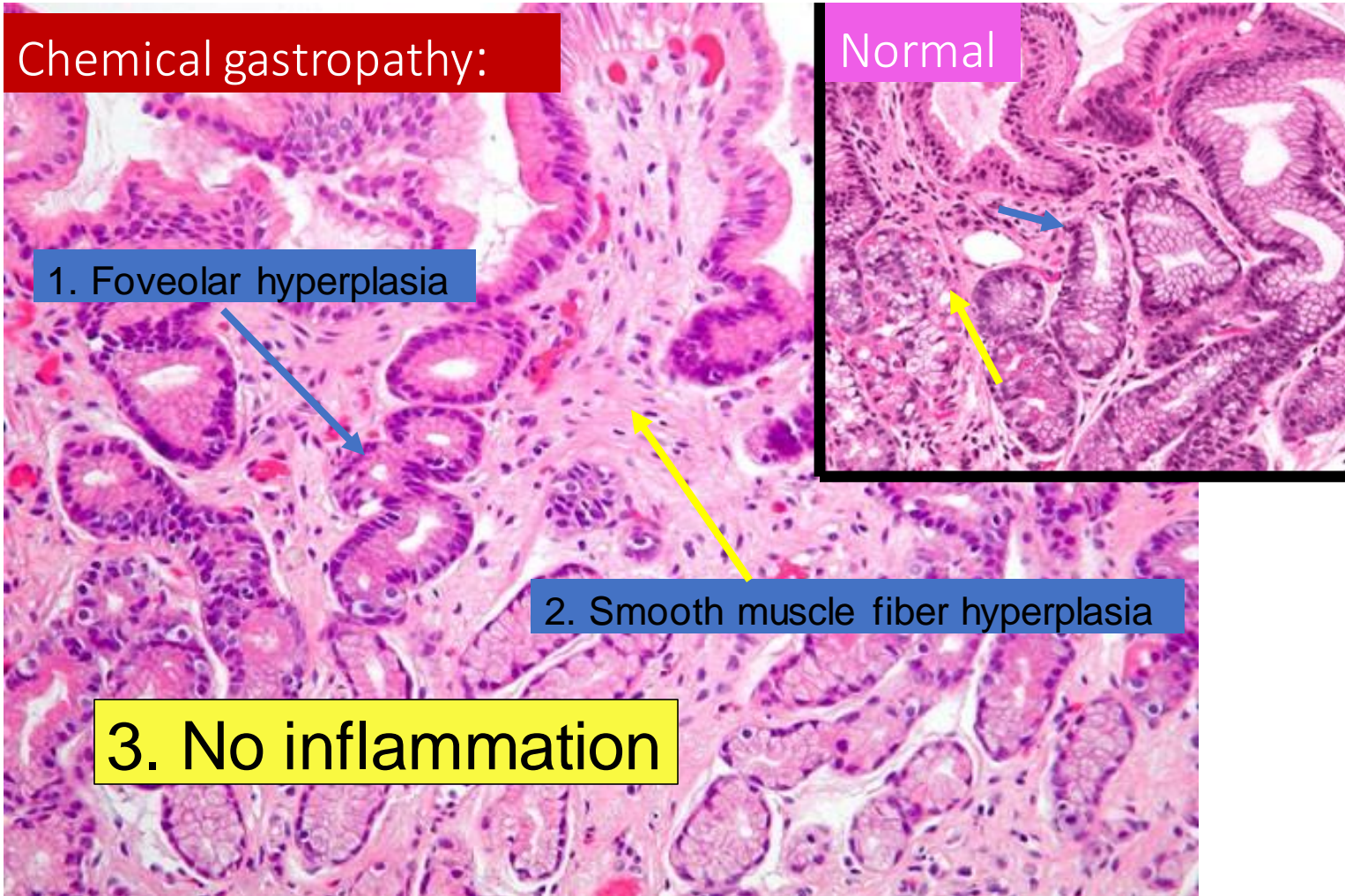


Corpus (oxyntic mucosa)





Chemical gastropathy:



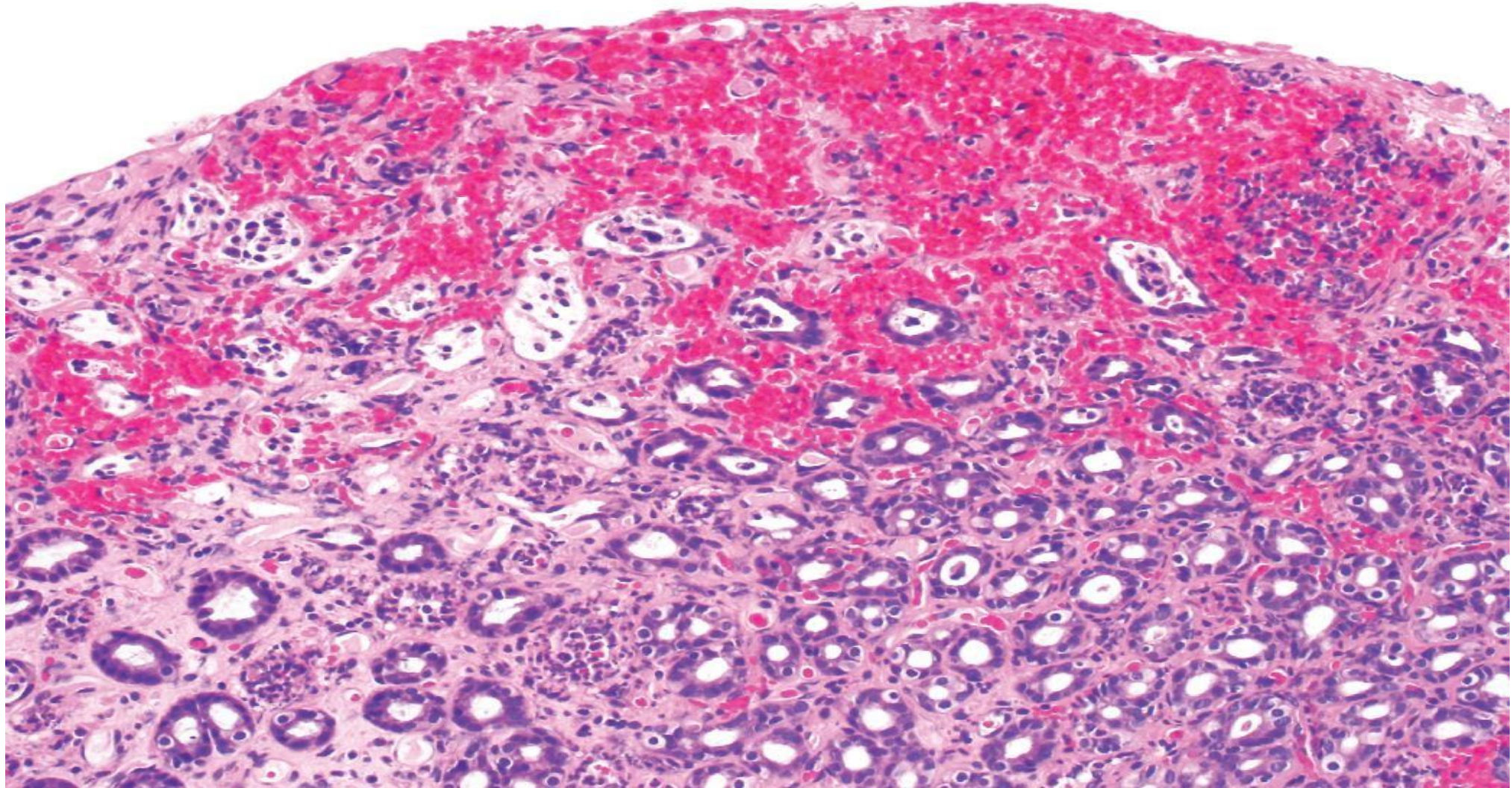
1. Foveolar hyperplasia

2. Smooth muscle fiber hyperplasia

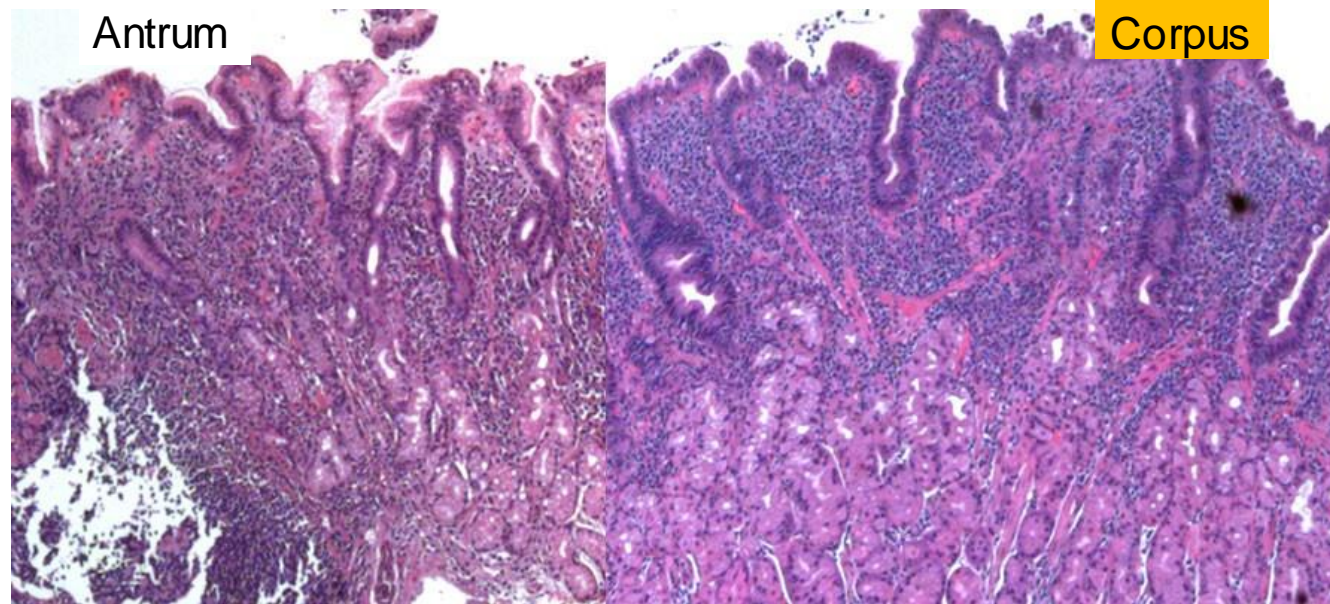
3. No inflammation

Normal

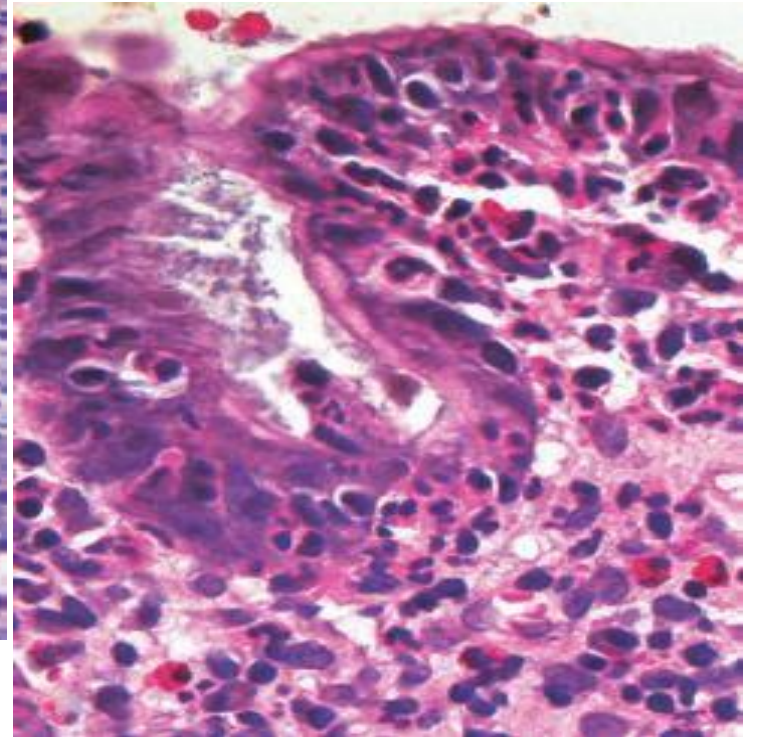
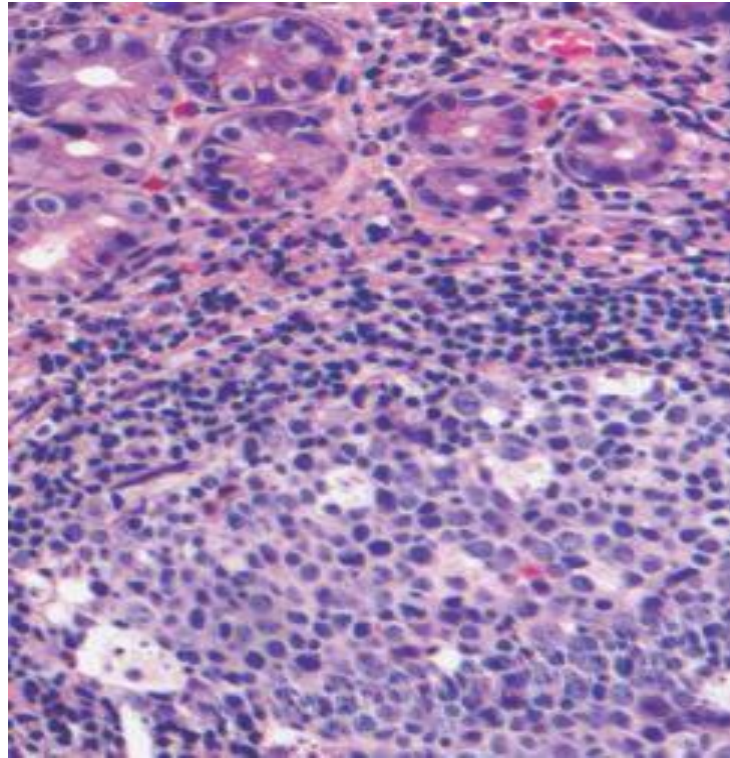
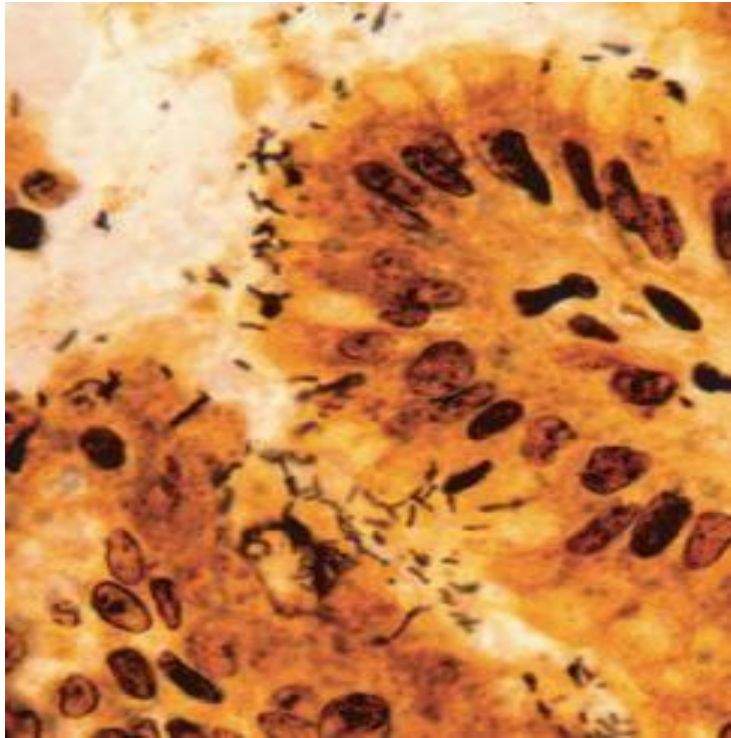
B



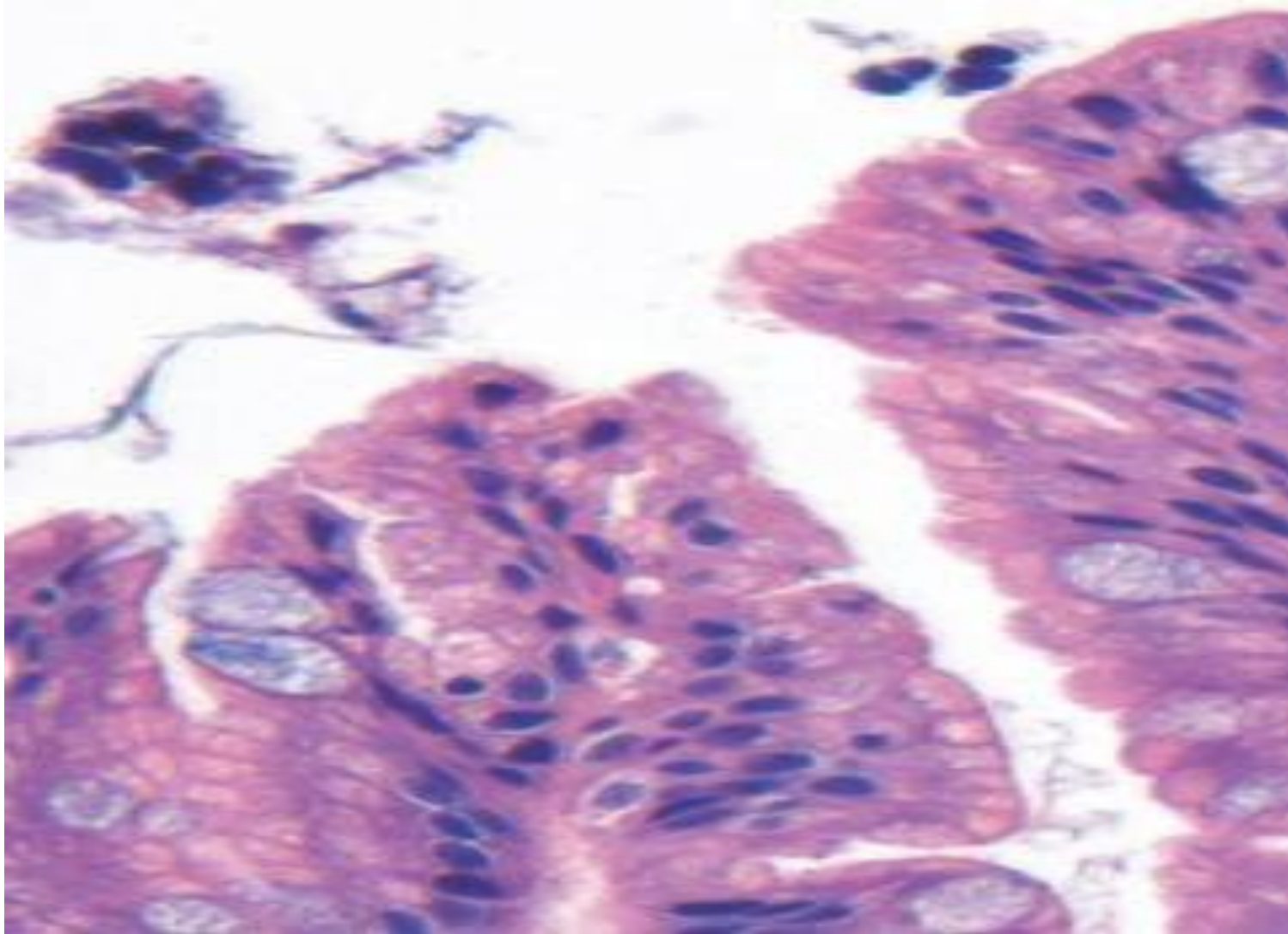
And *later* H. Pylori Gastritis

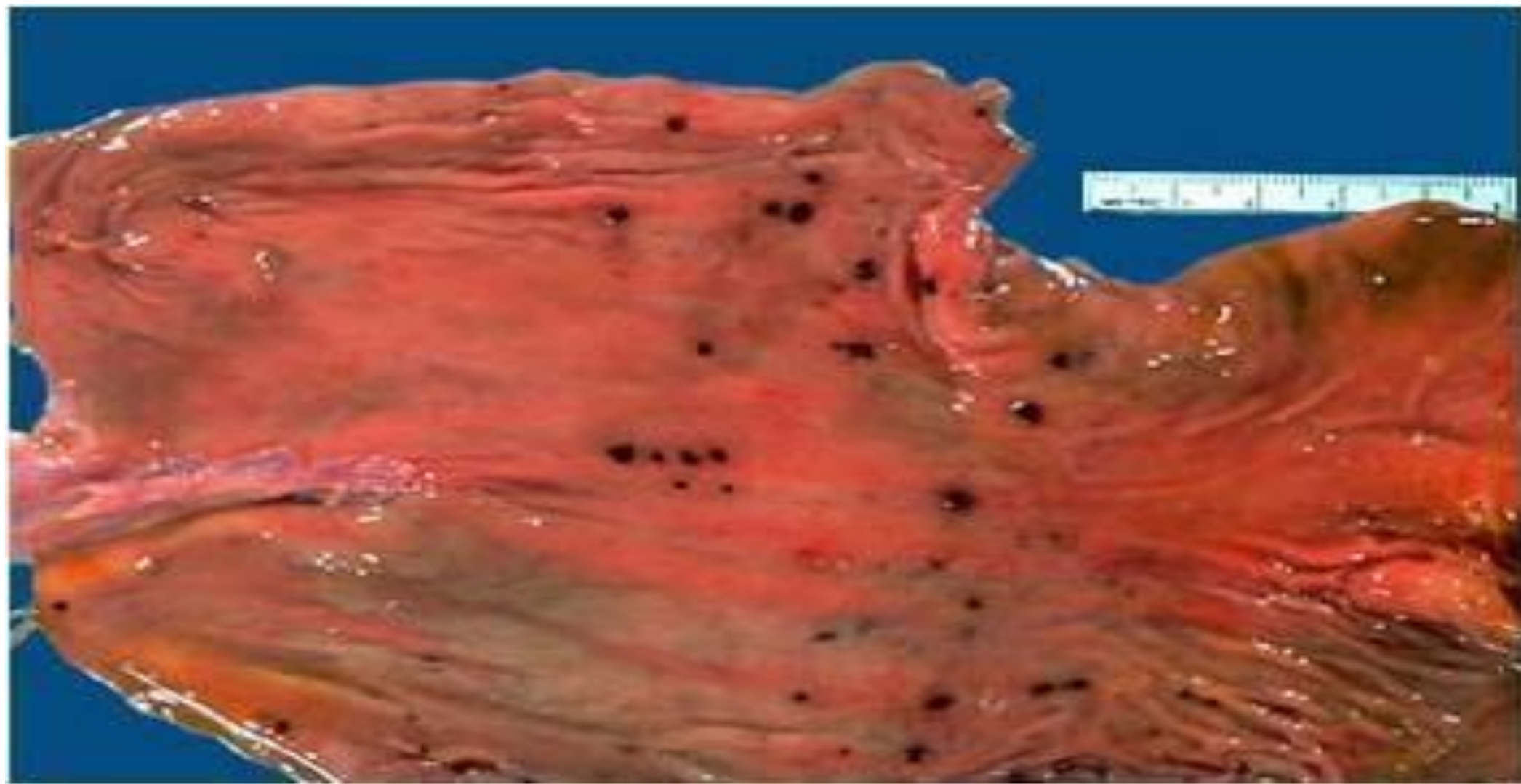


Pan-Gastritis with deeper inflammation in ! corpus



Intestinal metaplasia





All pictures of the last lectures
included (gastric 2)