

Question **28**

Not yet
answered

Marked out of
1.00

Flag
question

A 30-year-old woman presents with a 5-month history of increasing abdominal girth and pelvic discomfort. Imaging studies reveal a mass replacing the left ovary. A multilocular tumor filled with thick, viscous fluid as shown macroscopically in this picture. This tumor most closely resembles which of the following patterns of müllerian-type differentiation?



Select one:

- a. Endometrial glands in pregnancy
- b. Epithelium of the fallopian tube
- c. Glandular epithelium of the endometrium
- d. Mucosa of the bladder

on 1

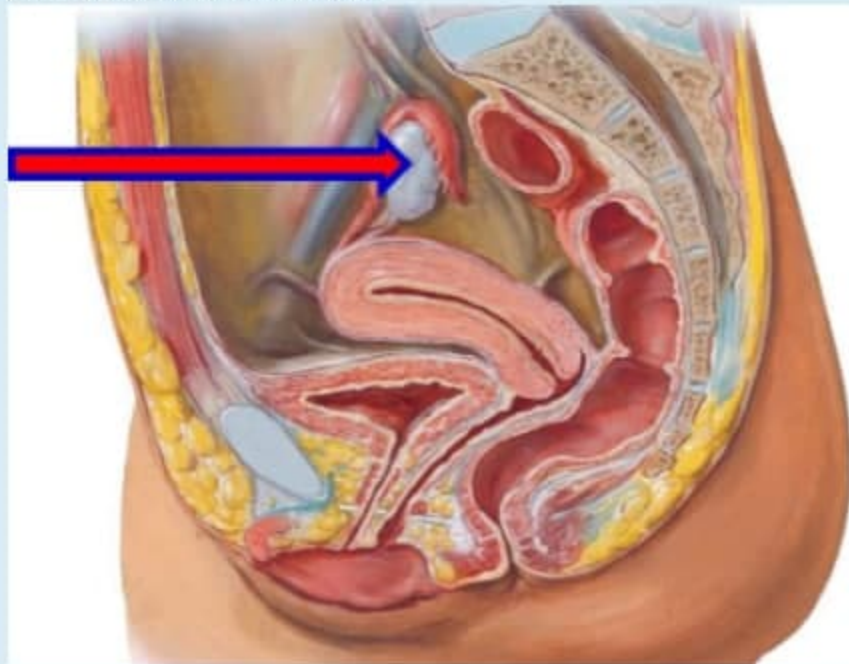
red

out of

g

n

What is the labelled structure?

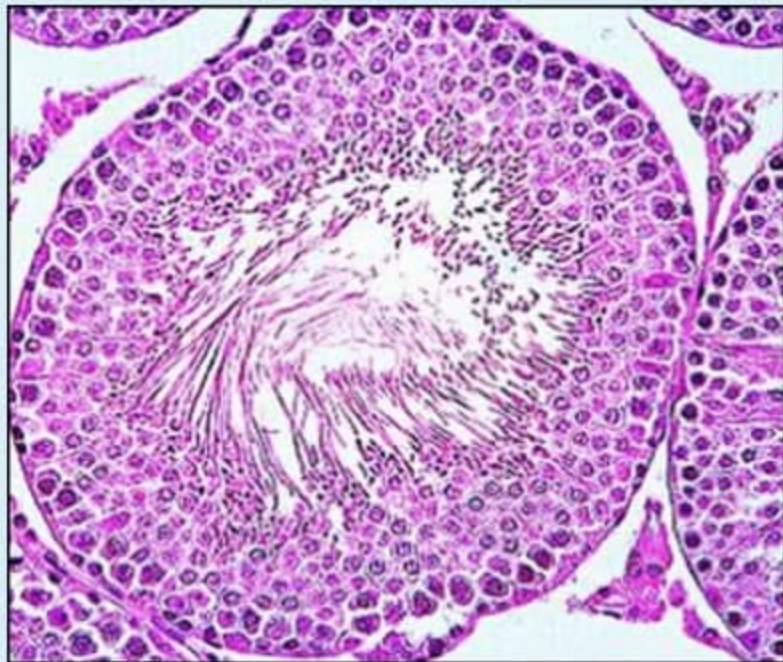


Select one:

- a. Ovary
- b. Fundus of uterus
- c. Cervix of uterus
- d. Vagina

Activate W
Go to Settings

Identify the shown specimen _____?



Select one:

- a. Testis
- b. Prostate gland
- c. Epididymis
- d. Ovarian follicles
- e. Lactating mammary gland

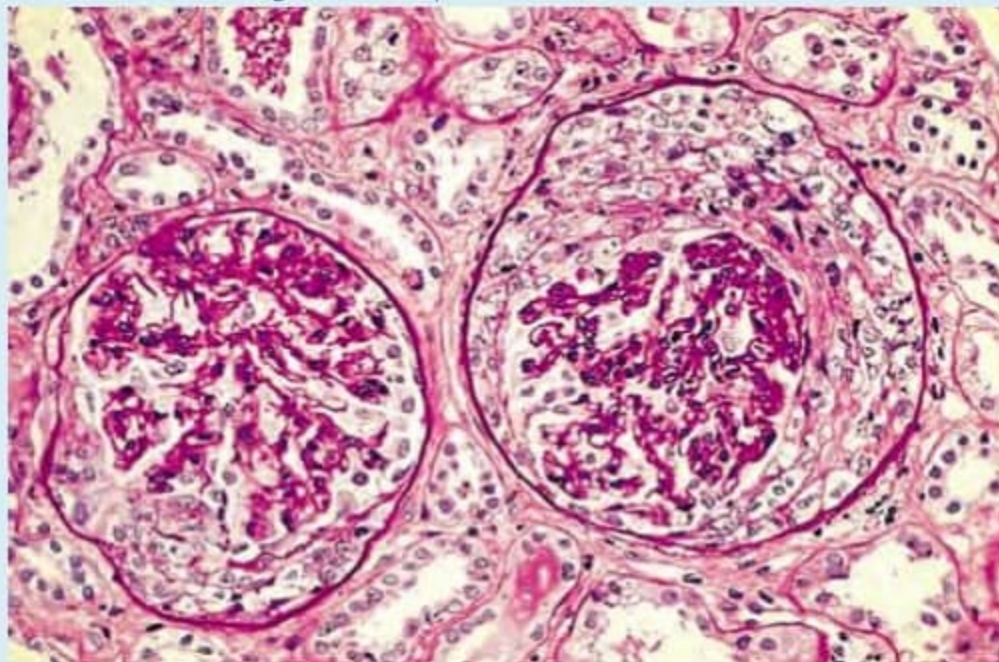
Question 3

Not yet answered

Marked out of 1.00

Flag question

Which of the following cells is responsible for the formation of these lesions internal to Bowman capsule?



Select one:

- a. Parietal epithelial cells
- b. Macrophages and parietal epithelial cells
- c. Parietal and visceral epithelial cells
- d. Macrophages
- e. Visceral epithelial cells

Question 4

Not yet answered

Marked out of 1.00

Flag question

This image shows?



Select one:

- a. Group A streptococci.
- b. *N. gonorrhoeae*.
- c. *T. pallidum*.
- d. Group B streptococci.
- e. *Candida*.

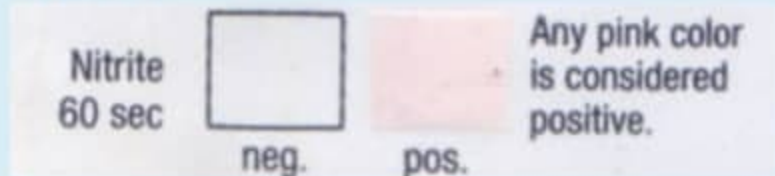
Question 5

Not yet answered

Marked out of 1.00

Flag question

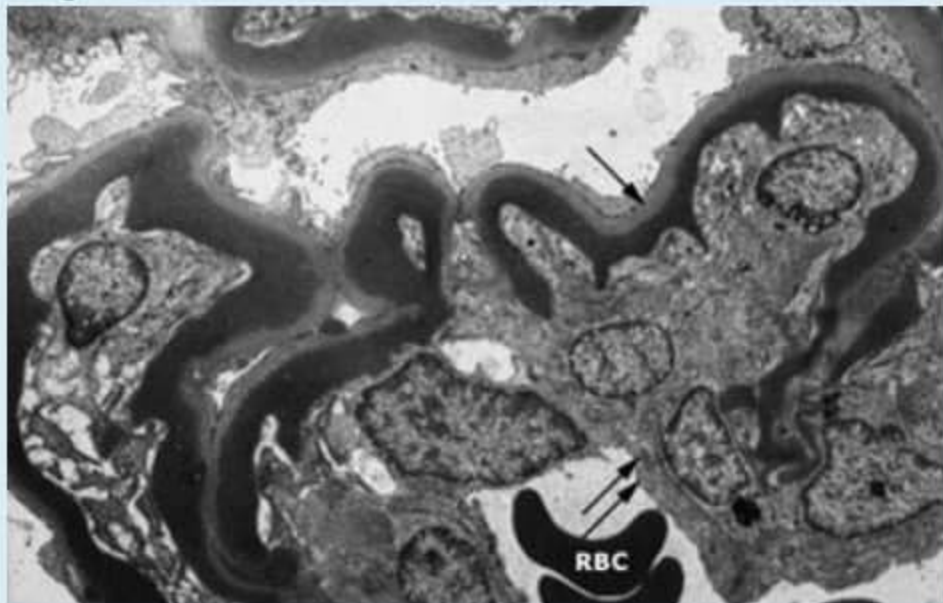
This test is used to detect?



Select one:

- a. Bacteria in urine.
- b. Fungus in urine.
- c. Sugar in urine.
- d. Protein in urine.
- e. Blood in urine.

One of the following is incorrect about the disease characteristically associated with these electron microscopic findings?



Select one:

- a. Pathogenesis is mainly complement dysregulation
- b. There is autoantibody against C3 convertase
- c. There is uncontrolled activation of the alternative complement pathway
- d. These dense homogeneous deposits contain C3
- e. The prognosis generally is poor

Question 8

Not yet answered

Marked out of 1.00

Flag question

. This test is positive when the leukocyte count more than ?



Select one:

- a. 10 leucocytes/hpf.
- b. 9 leucocytes/hpf.
- c. 15 leucocytes/hpf.
- d. 5 leucocytes/hpf.
- e. 25 leucocytes/hpf.

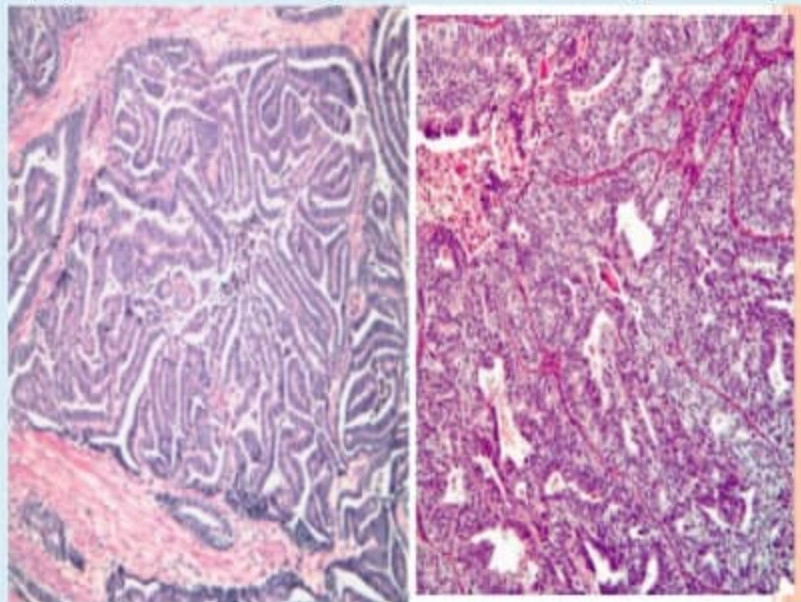
Question 9

Not yet answered

Marked out of 1.00

Flag question

A 45-year-old obese woman complains of increased menstrual blood flow of 8 months in duration. An endometrial biopsy is shown in the image. Which of the following most likely accounts for the pathogenesis of this lesion?



Select one:

- a. Excess estrogen stimulation
- b. Exposure to exogenous progestational agents
- c. History of chronic endometritis
- d. History of oral contraceptive use
- e. Prenatal exposure to diethylstilbestrol

Activate Windows
Go to Settings to activate Windows

Question 10

Not yet answered

Marked out of 1.00

Flag question

Which of the following serum markers is expected to be elevated in patients with these tumors?



Select one:

- a. Human chorionic gonadotropin
- b. Alpha-fetoprotein (AFP)
- c. Prostatic specific antigen
- d. Estrogen
- e. Carcinoembryonic antigen (CEA)

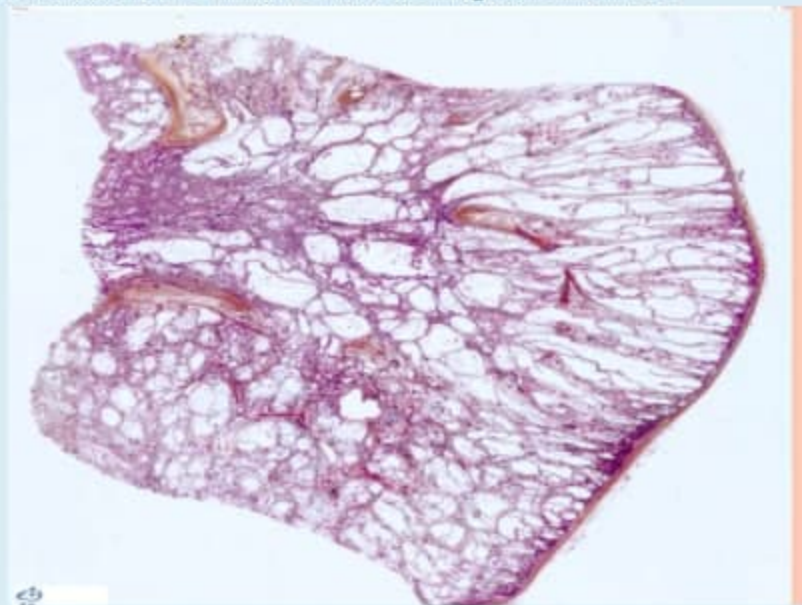
Question 11

Not yet answered

Marked out of 1.00

Flag question

A mother for 3-year-old male presents with a complaint of noticing passage of blood in his urine. Physical examination reveals bilateral flank and abdominal masses. Urinalysis reveals hematuria, proteinuria, and oliguria. The patient's kidneys are removed during surgery (shown in the image microscopically). This patient carries an increased risk for which of the following abnormalities?



Select one:

- a. Hepatic cysts
- b. Horseshoe kidney
- c. Pulmonary cysts
- d. Cake kidney
- e. Transitional cell carcinoma of the bladder

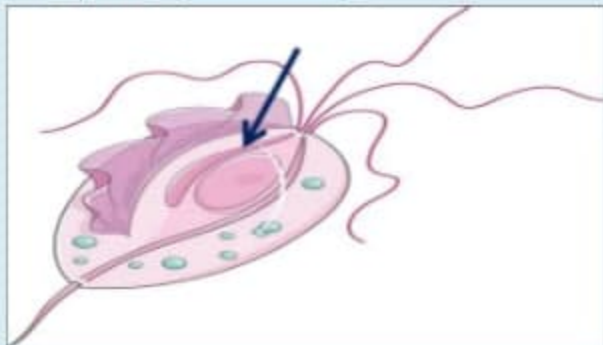
Question 12

Not yet
answered

Marked out of
1.00

Flag
question

Arrow points to _____?



Select one:

- a. Cytostome.
- b. Flagella.
- c. Parabasal body.
- d. Axostyle.
- e. Nucleus.

Question **13**

Not yet answered

Marked out of 1.00

Flag question

Structure with star is:



Select one:

- a. internal iliac artery
- b. ovarian nerve
- c. Midian sacral nerve
- d. Right ureter
- e. Left ureter

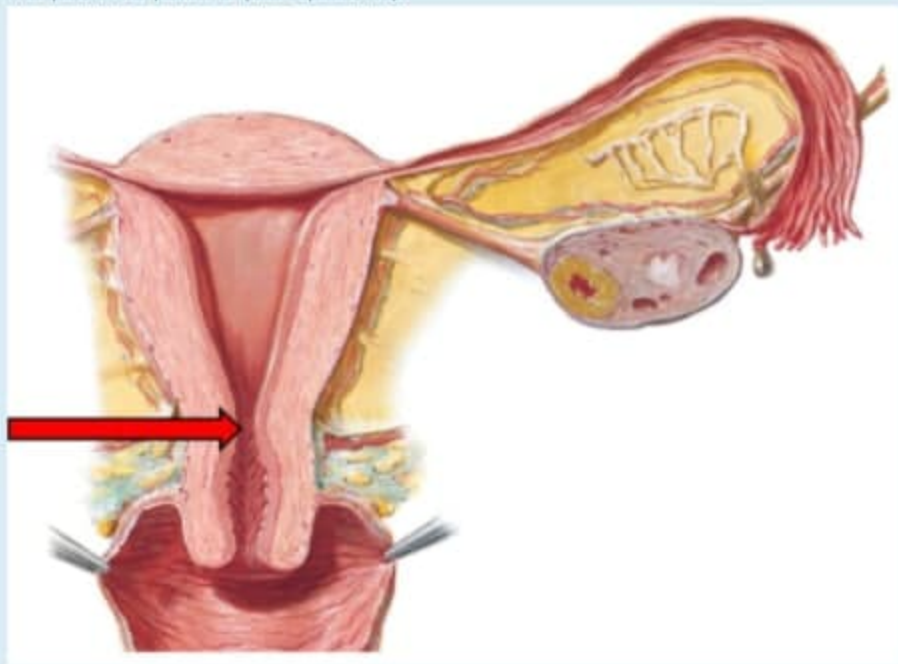
Question 14

Not yet answered

Marked out of 1.00

Flag question

The pointed part is (be specific):



Select one:

- a. The external os
- b. The Fundus
- c. The cervical canal
- d. The isthmus
- e. The internal os

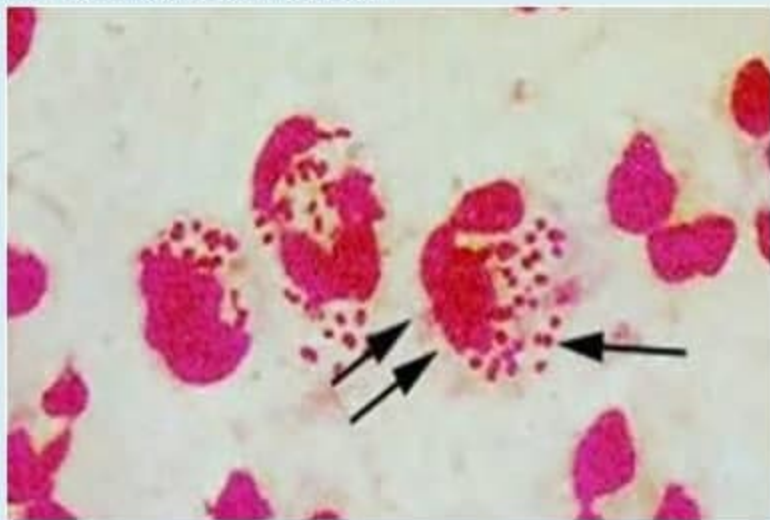
Question **15**

Not yet
answered

Marked out of
1.00

Flag
question

This staining pattern indicates?



Select one:

- a. Group A streptococci.
- b. *N. gonorrhoeae*.
- c. *T. pallidum*.
- d. Group B streptococci.
- e. *Candida*.

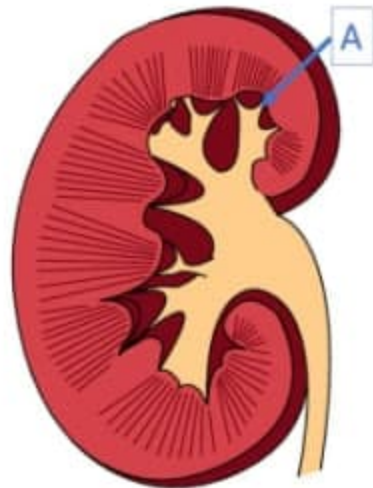
Question **16**

Not yet answered

Marked out of 1.00

Flag question

Structure A is:



Select one:

- a. Minor calyces
- b. Major calyx
- c. Renal papillae
- d. Medullary pyramid
- e. Renal pelvis

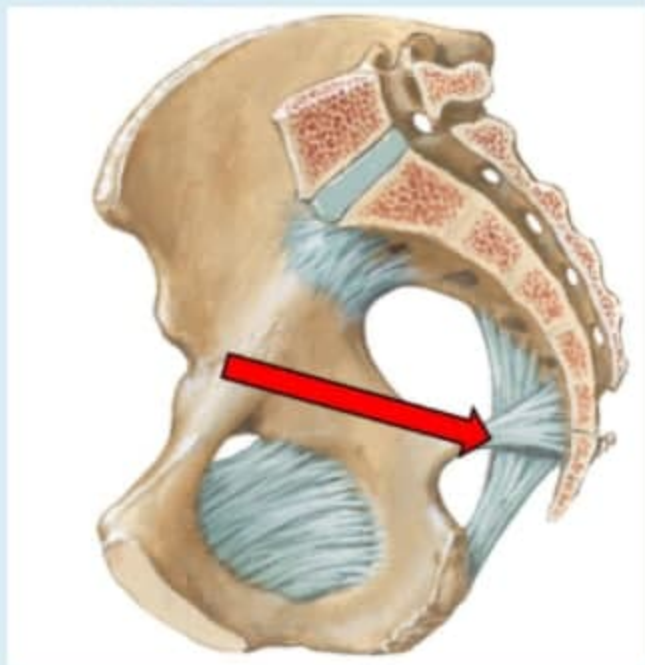
Question 17

Not yet
answered

Marked out of
1.00

Flag
question

The labeled structure is:



Select one:

- a. The sacrotuberous ligaments
- b. Part of the lateral pelvic wall
- c. Part of the posterior pelvic wall
- d. Part of the anterior pelvic wall
- e. An obstetric standpoint

Question **18**

Not yet
answered

Marked out of
1.00

Flag
question

Which of the following organisms is most likely to be cultured from this lesion?



Select one:

- a. *Candida albicans*
- b. *Streptococcus pneumoniae*
- c. *Staphylococcus aureus*
- d. Viridans streptococci
- e. *Escherichia coli*

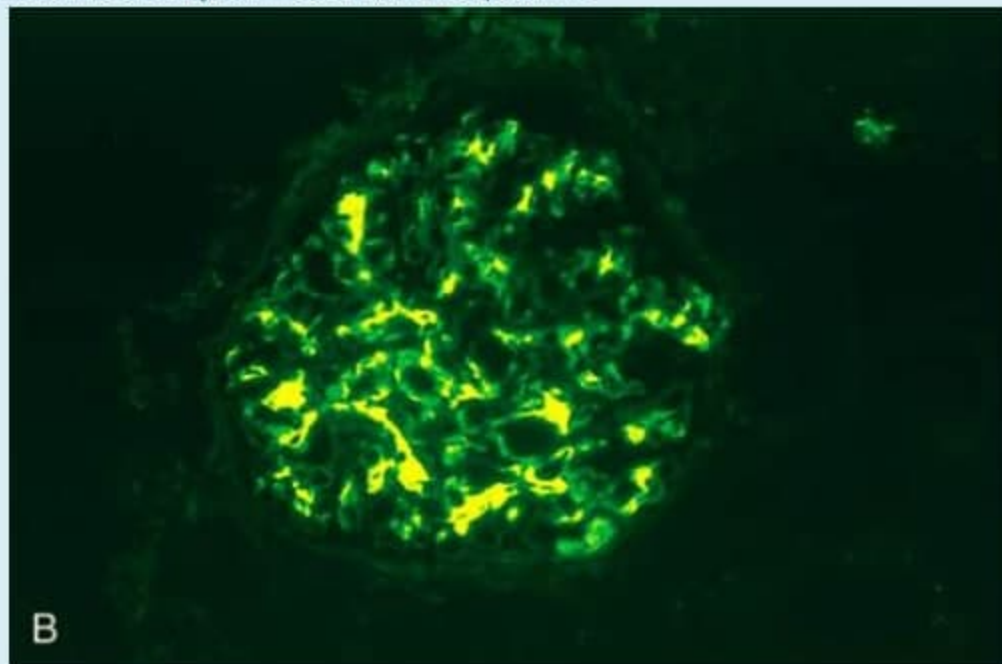
Question **19**

Not yet
answered

Marked out of
1.00

Flag
question

This is an immunofluorescence for IgA in the glomeruli. Which of the following conditions is characteristically associated with this pattern?



Select one:

- a. IgA Nephropathy
- b. Minimal change disease
- c. Rapidly progressive glomerulonephritis
- d. Membrano-proliferative glomerulonephritis
- e. Membranous nephropathy

Activate Windows
Go to Settings to a

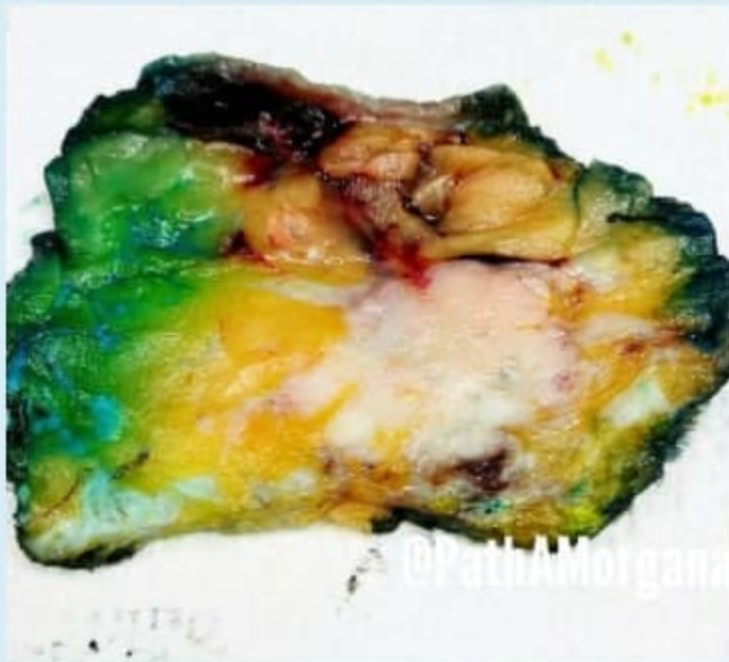
Question **20**

Not yet
answered

Marked out of
1.00

Flag
question

If you sectioned the breast lobectomy seen in this photo and examined it microscopically, what is the most likely microscopic finding?



Select one:

- a. Fibroadenoma.
- b. Normal breast tissue.
- c. Ductal carcinoma in situ.
- d. Lobular carcinoma in situ.
- e. Invasive ductal carcinoma.

Activate Windows

Go to Settings to activate Windows

Question **21**

Not yet
answered

Marked out of
1.00

Flag
question

Choose the correct one _____?



Select one:

- a. Lophocercous cercaria.
- b. Leptocercous cercaria.
- c. Microcercous cercaria.
- d. Furcocercous cercaria.
- e. Encysted cercaria.

Activ
Go to

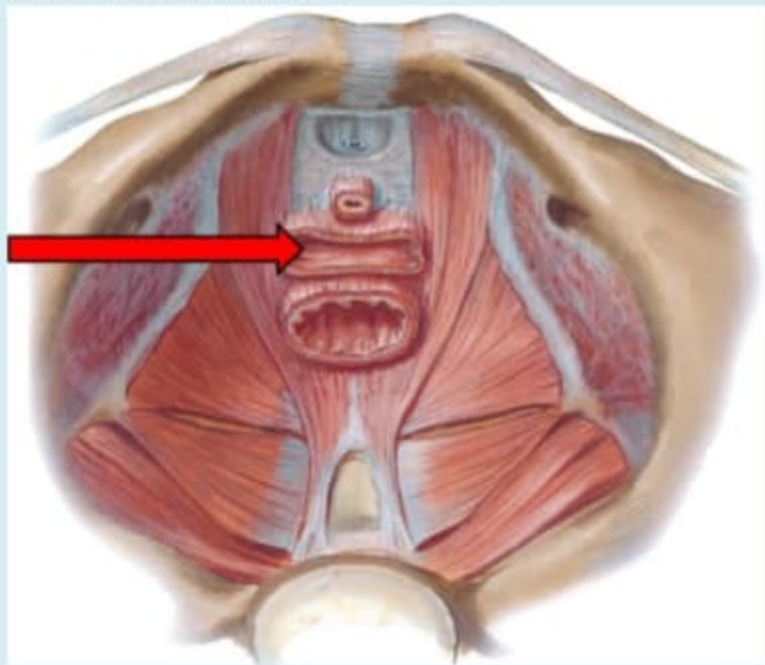
Question **22**

Not yet
answered

Marked out of
1.00

Flag
question

The labeled structure is:



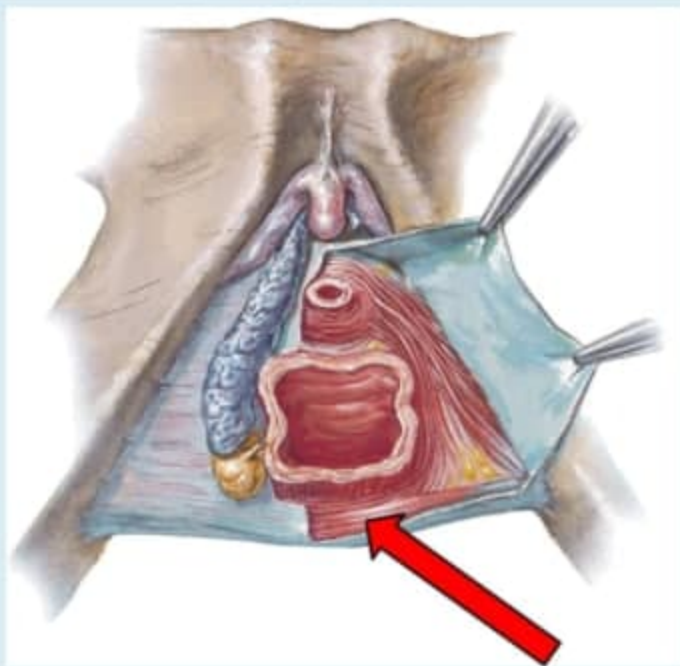
Select one:

- a. Urethra
- b. Bartholin gland
- c. Rectum
- d. Vagina
- e. Vulva

Not yet
answered

Marked out of
1.00

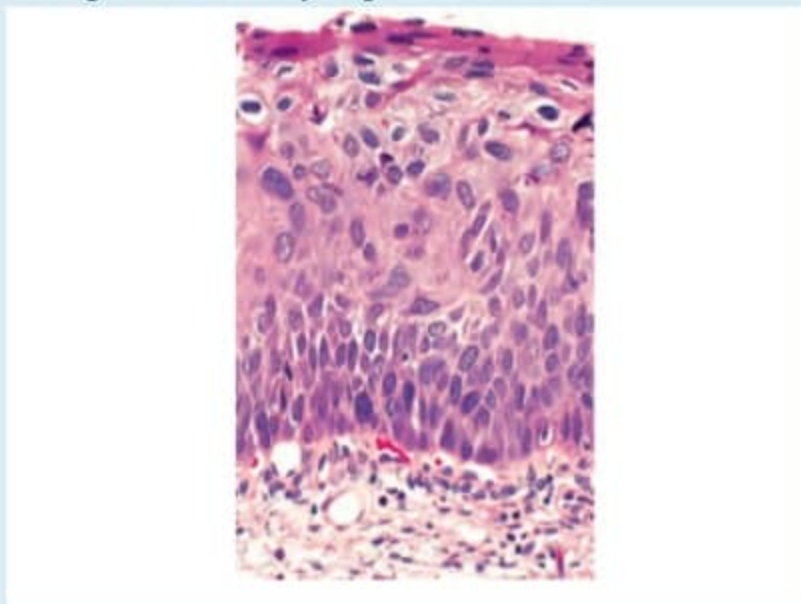
Flag
question



Select one:

- a. The sphincter urethrae
- b. The superficial transverse perineal muscle
- c. Contents of the deep perineal pouch
- d. Sphincter Vaginalis
- e. Contents of the superficial perineal pouch

A routine cervical Pap smear taken during a gynecologic examination of a 31-year-old woman shows numerous, loosely arranged cells with high nuclear-to-cytoplasmic ratio. Colposcopy shows white epithelium, punctation, and a mosaic pattern in the transformation zone and a biopsy is taken (shown in the image microscopically). Which of the following is the most likely diagnosis?



Select one:

- a. Squamous metaplasia of the transformation zone
- b. Chronic cervicitis
- c. Invasive squamous cell carcinoma
- d. Severe dysplasia (CIN-3)
- e. Moderate dysplasia (cervical intraepithelial neoplasia [CIN]-2)

Activate Windows

Go to Settings to activate Window

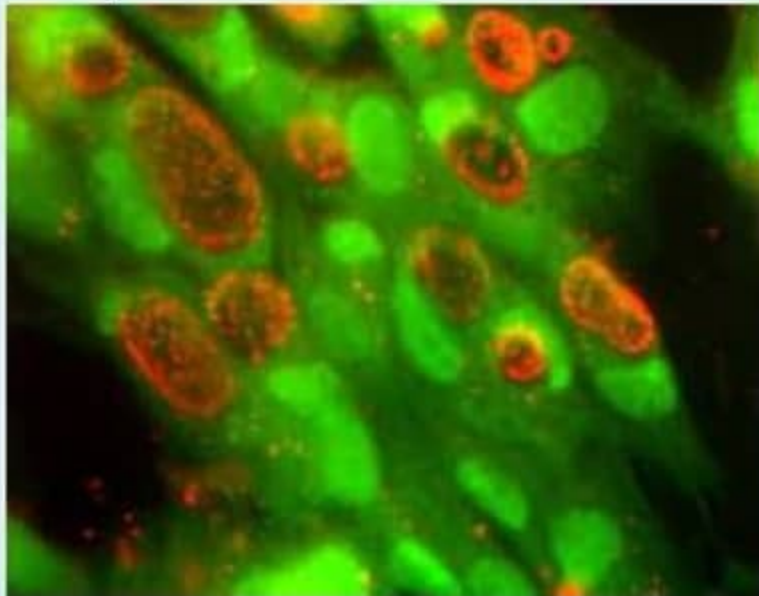
Question 25

Not yet
answered

Marked out of
1.00

Flag
question

This image indicates?



Select one:

- a. Gonorrhoea.
- b. Chlamydia infection.
- c. Syphilis.
- d. Non-gonococcal urethritis.
- e. Artifact.

Question 26

Not yet
answered

Marked out of
1.00

Flag
question

One of the following is incorrect about this condition?



Select one:

- a. Typically associated with bell clapper abnormality
- b. Obstruction mainly affect the venous drainage
- c. During surgery both testes are fixed through orchiopexy
- d. Spermatic cord should be untwisted in 12 hours or less
- e. This condition is considered a urologic emergencies

Question 27

Not yet
answered

Marked out of
1.00

Flag
question

What is the labelled structure?



Select one:

- a. Labia majora
- b. Vestibule
- c. Labia minora
- d. Clitoris
- e. Mons pubis

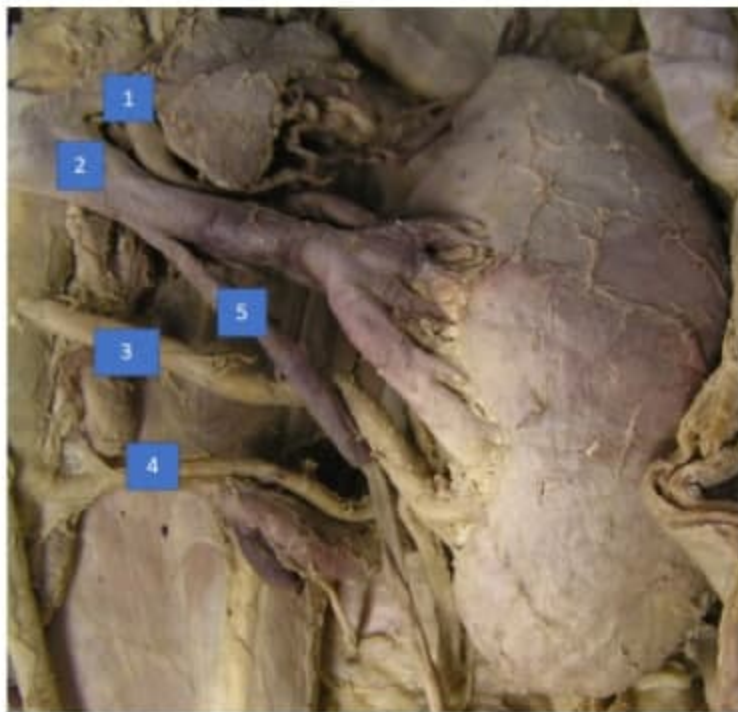
Question **28**

Not yet
answered

Marked out of
1.00

Flag
question

The renal artery is structure number:



Select one:

- a. 1
- b. 2
- c. 3
- d. 4

Question **29**

Not yet
answered

Marked out of
1.00

Flag
question

Identify the cell type _____ ?



Select one:

- a. Mesangial cells
- b. Spermatogenic epithelium
- c. Granulosa cells
- d. Pseudostratified columnar
- e. Theca interna cells

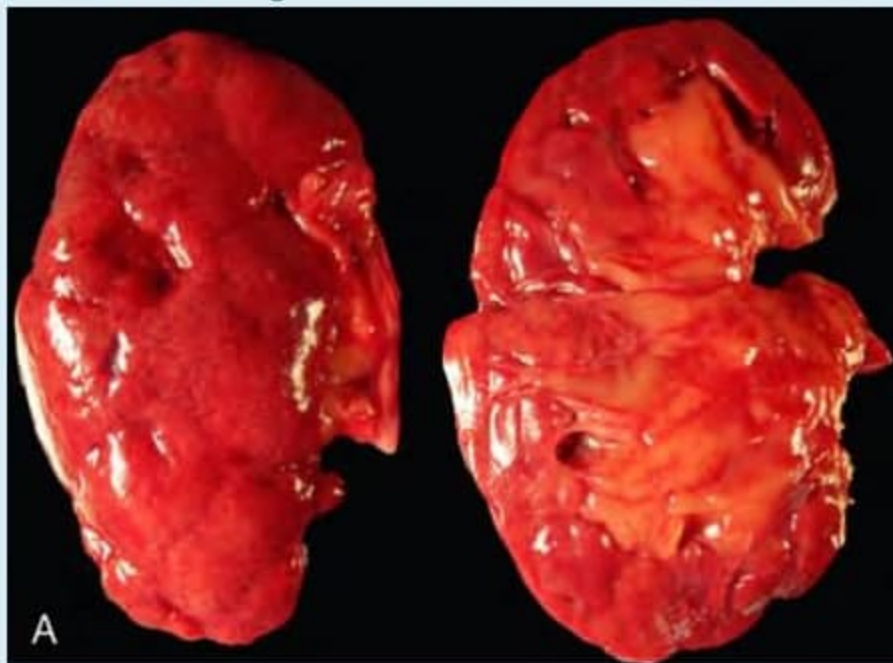
Question 30

Not yet answered

Marked out of 1.00

Flag question

Which of the following conditions is considered the most common cause of these lesions?



Select one:

- a. Urothelial carcinoma
- b. Benign prostatic hyperplasia
- c. Chronic reflux
- d. Obstructing renal stones
- e. Kidney tumors

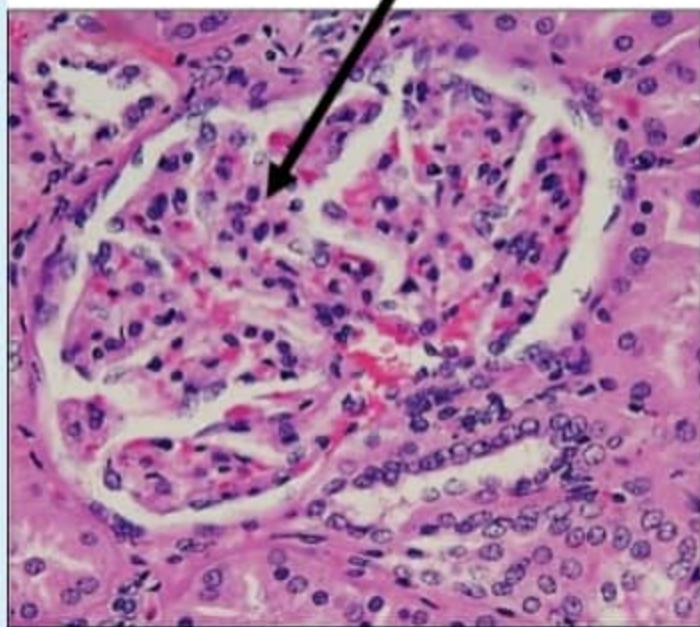
Question 31

Not yet answered

Marked out of 1.00

Flag question

Arrow points to _____ ?



Select one:

- a. Interstitial cells of Leydig's
- b. Lymphocytes aggregation
- c. Granulosa cells
- d. Principle cells
- e. Glomerulus

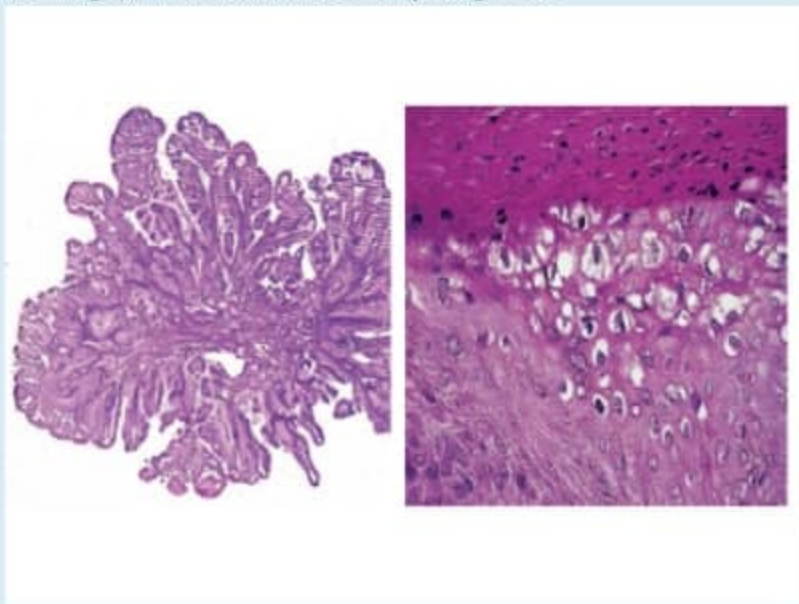
Question 32

Not yet answered

Marked out of 1.00

Flag question

A 60-year-old woman presents with a 3-week history of a painful genital lesion and bleeding. Physical examination reveals an exophytic, ulcerated 1-cm polypoid mass near the external end of the urethra (shown microscopically in this image). What is the most likely diagnosis?



Select one:

- a. Bartholin gland cyst
- b. Caruncle
- c. Condyloma acuminatum
- d. Lichen sclerosis
- e. Lymphogranuloma venereum

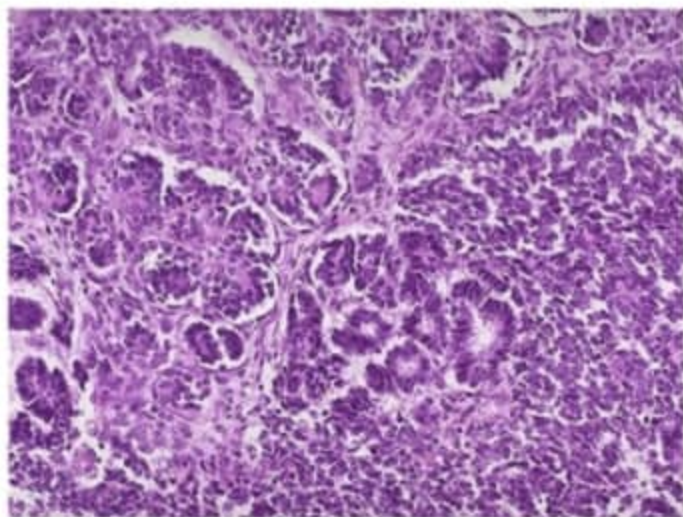
Question 33

Not yet answered

Marked out of 1.00

Flag question

The mother of a 12-month-old boy palpates a mass on the right side of the infant's abdomen. The surgical specimen is shown microscopically in this picture. Which of the following is the most likely diagnosis?



Select one:

- a. Squamous cell carcinoma
- b. Rhabdomyosarcoma
- c. Renal cell carcinoma
- d. Transitional cell carcinoma
- e. Wilms tumor

Question 34

Not yet answered

Marked out of 1.00

Flag question

This test is used to diagnose?



Select one:

- a. Group A streptococci.
- b. *N. gonorrhoeae*.
- c. *T. pallidum*.
- d. Group B streptococci.
- e. *Candida*.

Question 35

Not yet answered

Marked out of 1.00

Flag question

Which of the following colony counts from a midstream urine sample is indicative for UTI?



Select one:

- a. $\geq 10^5$ CFU/ml.
- b. $\geq 10^3$ CFU/ml.
- c. $\geq 10^2$ CFU/ml.
- d. $\geq 10^8$ CFU/ml.
- e. $\geq 10^6$ CFU/ml.

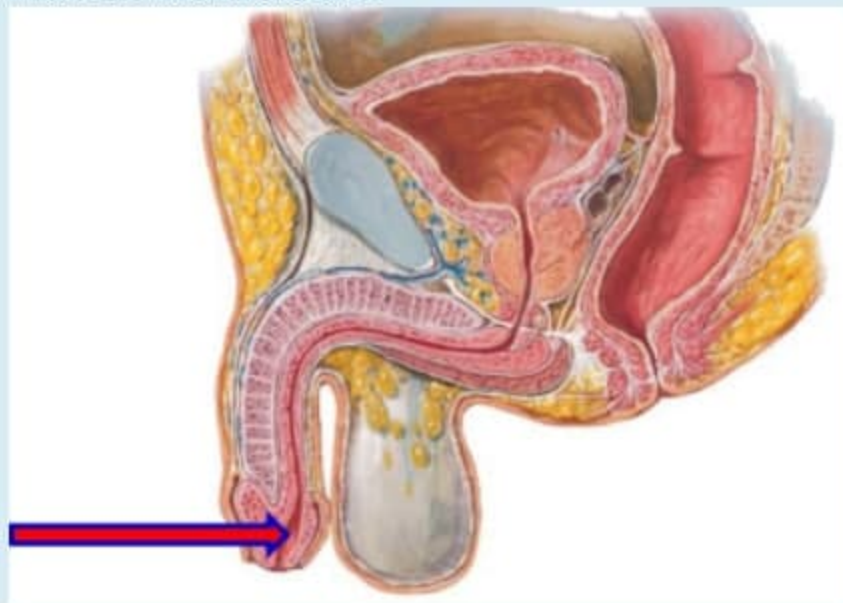
Question **36**

Not yet answered

Marked out of 1.00

Flag question

What is the labelled structure?



Select one:

- a. Corpus cavernosum
- b. Body of penis
- c. Bulbus spongiosus
- d. Navicular fossa
- e. Glans penis

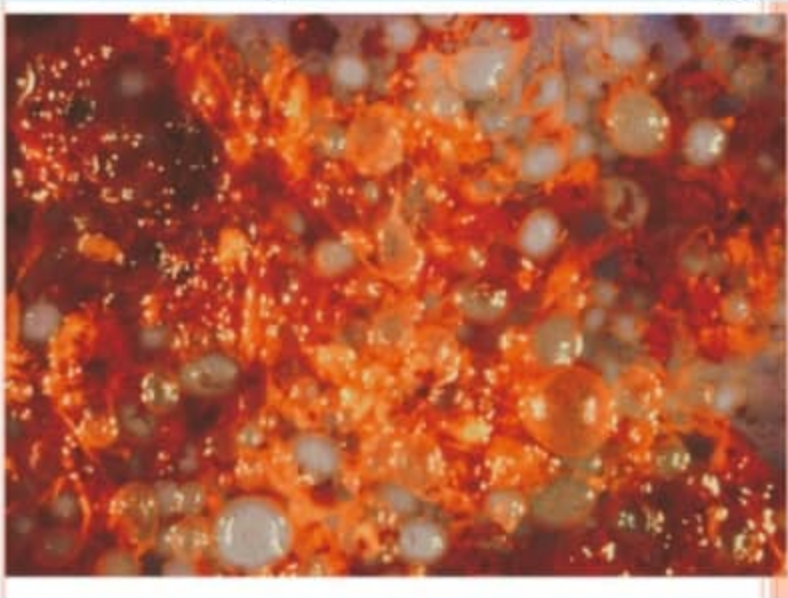
Question 39

Not yet answered

Marked out of 1.00

Flag question

A 17-year-old woman presents with a 5-day history of vaginal bleeding. An ultrasound shows a dilated endometrial cavity but no evidence of a fetus. Endometrial evacuation of the uterus by suction curettage reveals grapelike clusters, with individual units measuring up to 5 mm in diameter (shown in the image). Cytogenetic examination of this tissue will most likely demonstrate which of the following genetic patterns?



Select one:

- a. Aneuploidy
- b. Diploidy
- c. Haploidy
- d. Polyploidy
- e. Triploidy

Activate Windows

Go to Settings to activate Windows.

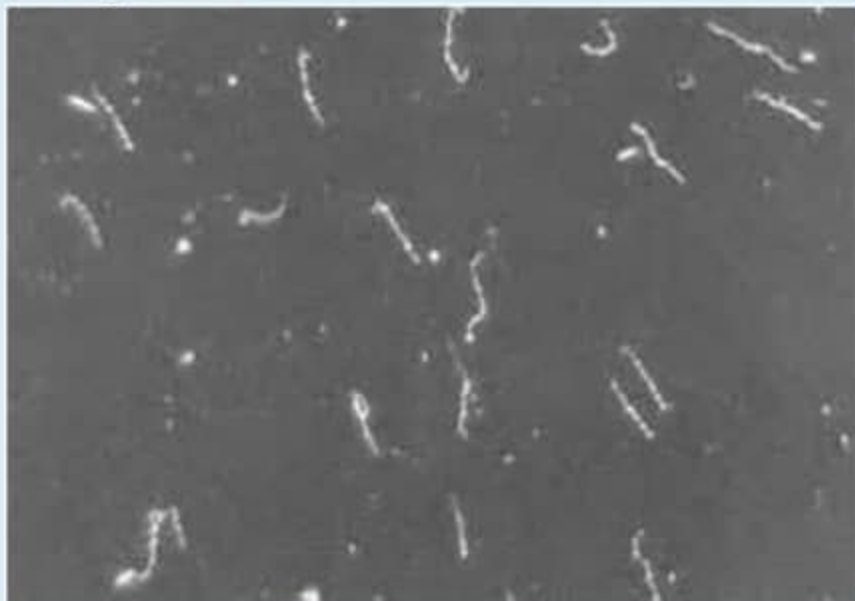
Question 40

Not yet
answered

Marked out of
1.00

Flag
question

This image shows?



Select one:

- a. Group A streptococci.
- b. *N. gonorrhoeae*.
- c. *T. pallidum*.
- d. Group B streptococci.
- e. *Candida*.

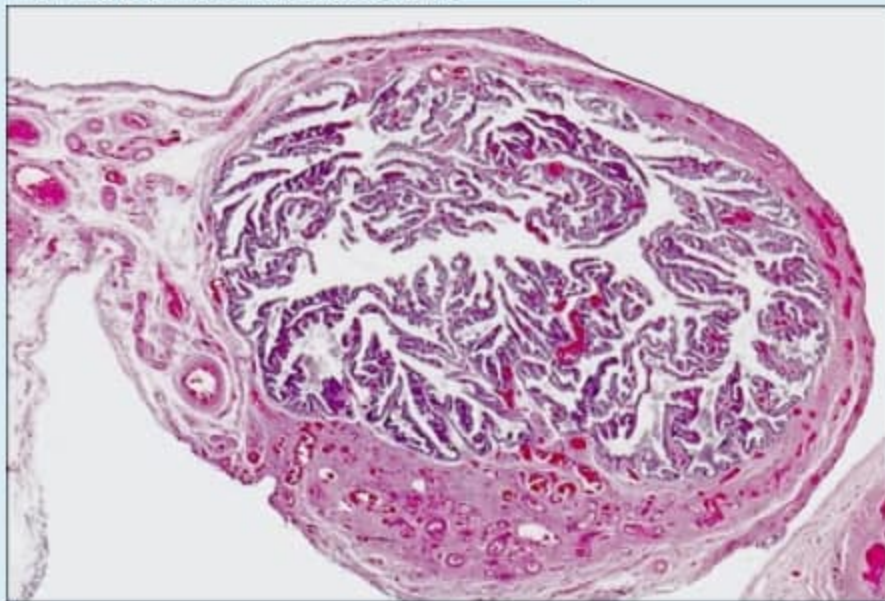
Question 37

Not yet
answered

Marked out of
1.00

Flag
question

The lining epithelium of this organ is _____?



Select one:

- a. Pseudostratified columnar
- b. Simple columnar partially ciliated
- c. Simple squamous
- d. Simple cuboidal
- e. Trophoblastic cells

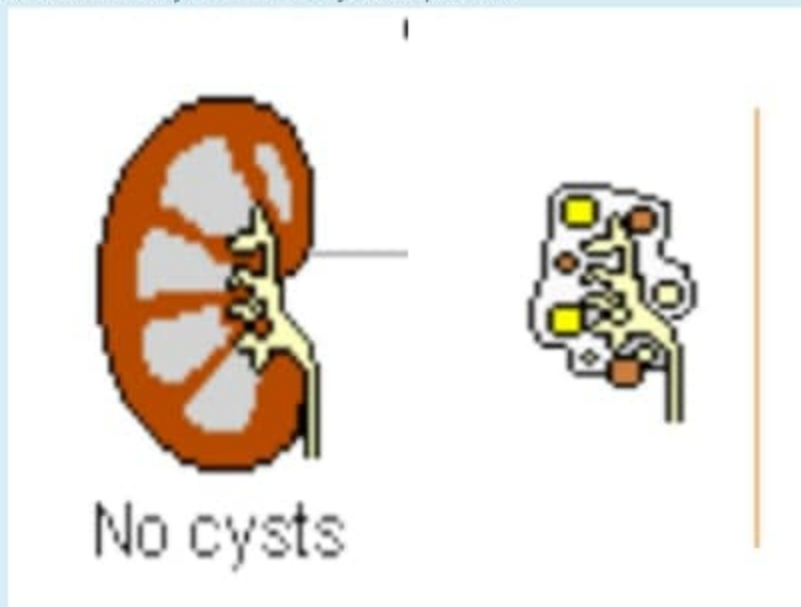
Question 38

Not yet answered

Marked out of 1.00

Flag question

In comparing between these two kidneys. The kidney without cyst is the normal one, What is the most common cause of the cysts in the adjacent picture?



Select one:

- a. Chronic infection
- b. VHL mutation
- c. Autosomal recessive trait
- d. Autosomal dominant trait
- e. Long period of dialysis

Activate Windows

Go to Settings to activate Windows