



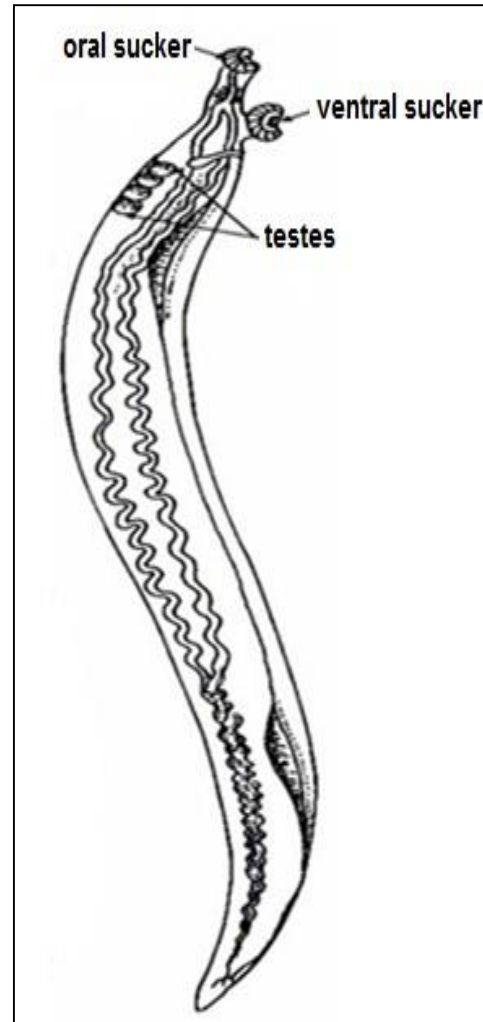
Urogenital Lab

Presented by

Associate Professor Dina Abou Rayia

Schistosoma haematobium male

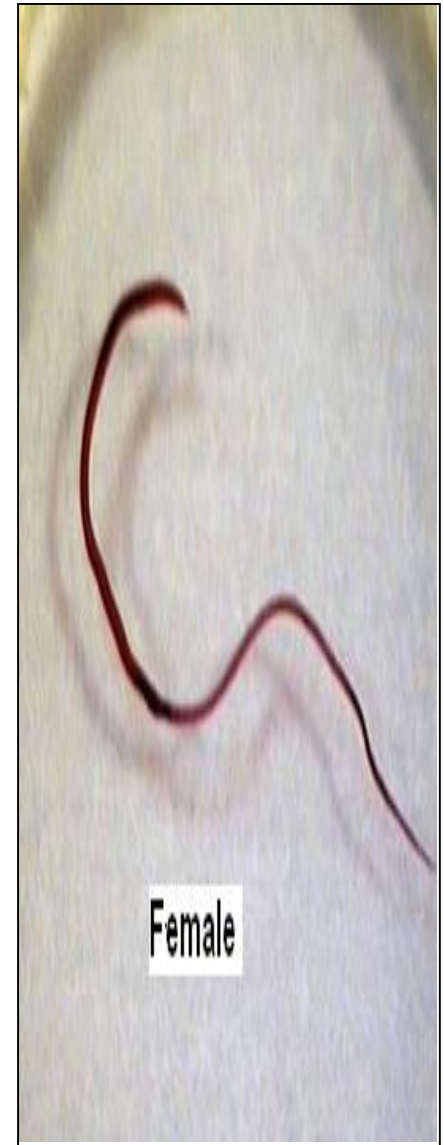
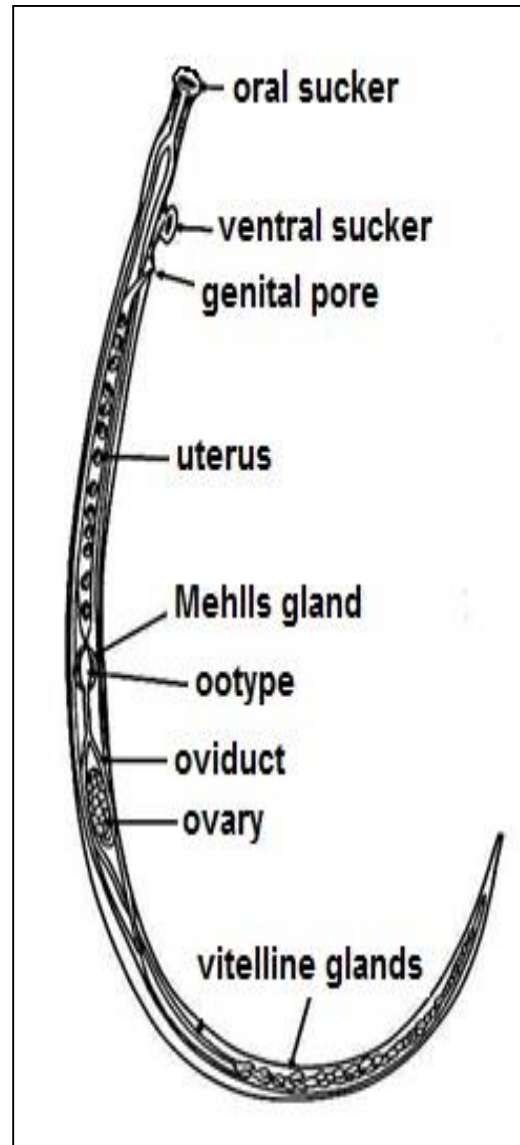
- ❖ **Cuticle:** Fine tubercle.
- ❖ **Oral & Ventral suckers.**
- ❖ **Tests:** 3-5, big and in a line.
- ❖ **Int. caeca:** reunited posterior gives short single caecum.
- ❖ **Habitat:** small branches of vesical and pelvic venous plexuses.

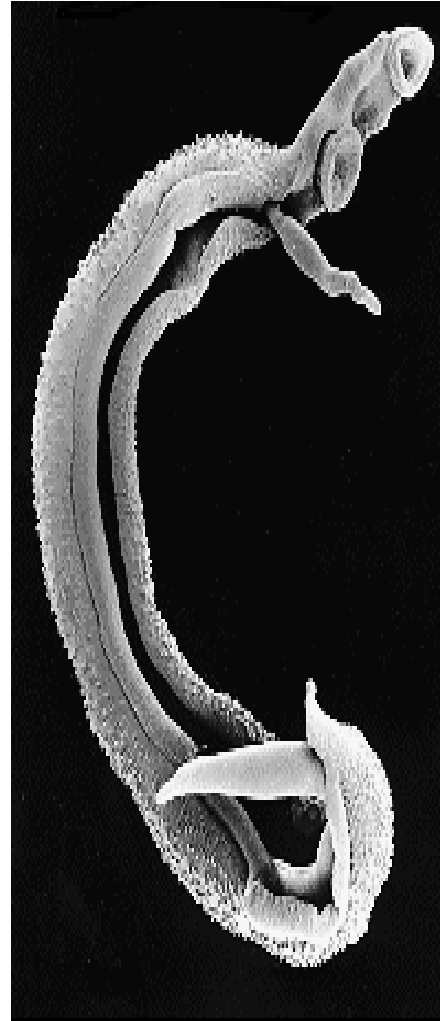


Male

S. haematobium female

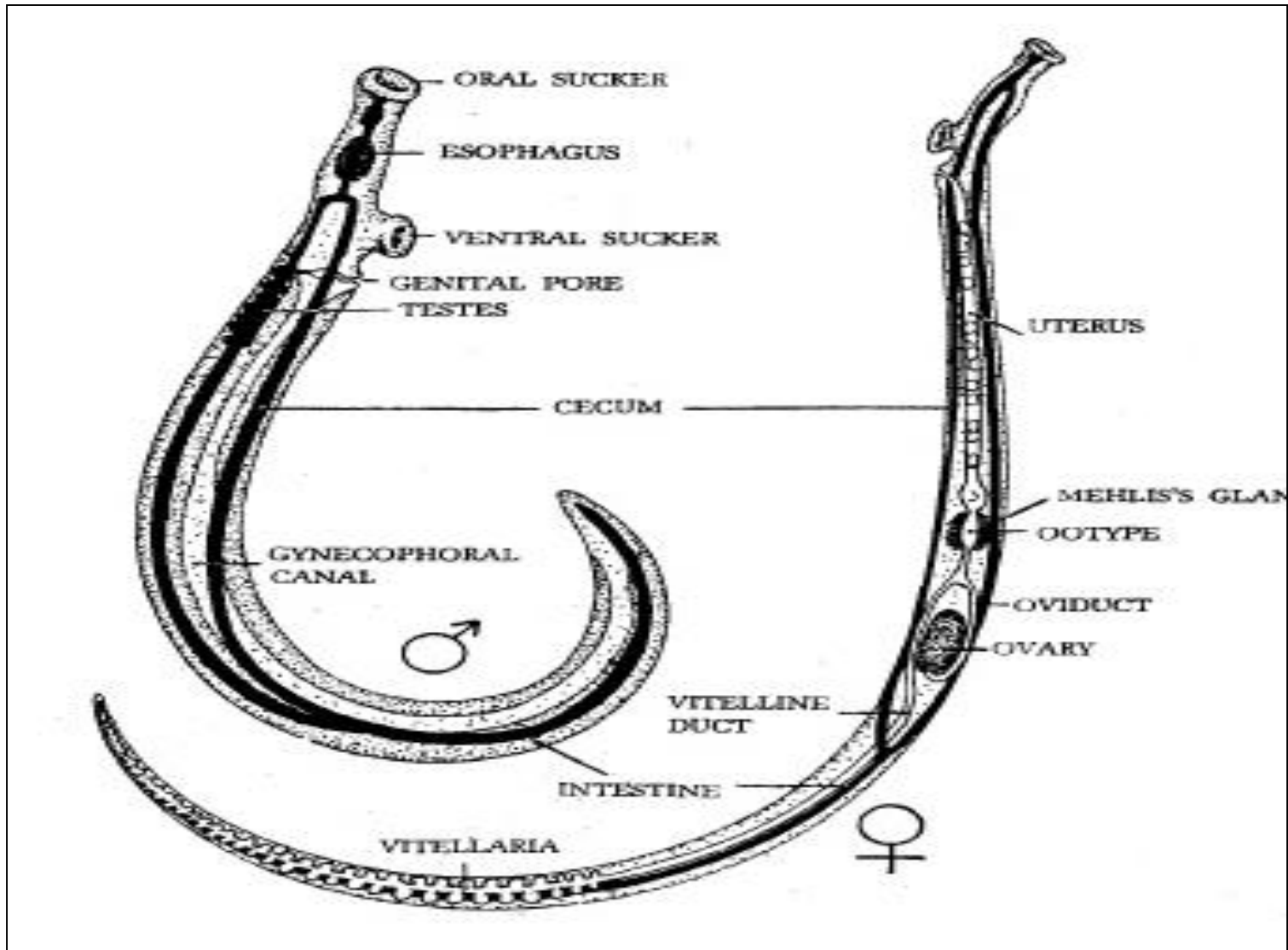
- ❖ **Cylindrical worm**
- ❖ **Ovary:** Posterior 1/3 of the body
- ❖ **Uterus:** Anterior & long.
- ❖ **Vitelline glands:** Small in the post. part of the body around short single caecum.





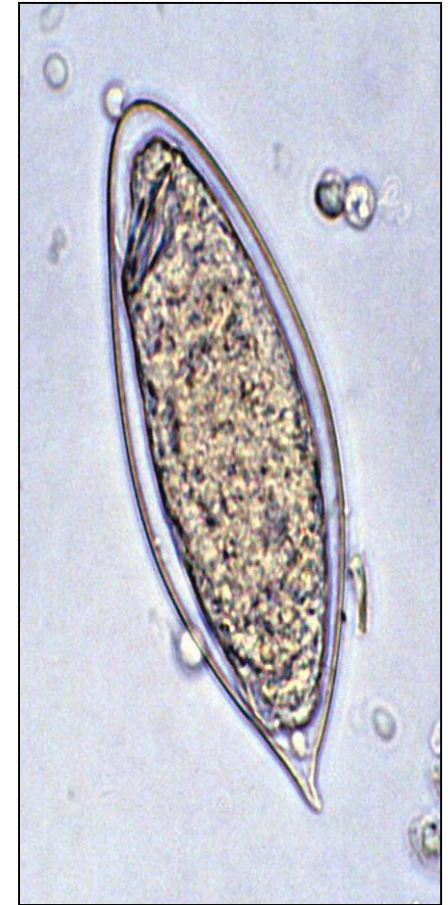
***Schistosoma haematobium* male and female in copula**

Schistosoma haematobium male & female



S. haematobium Egg (D.S)

- ❖ **Shape:** Oval with terminal spine
- ❖ **Shell:** Thin, non operculated
- ❖ **Colour:** Translucent
- ❖ **Content:** Mature (fully developed miracidium)



***Bulinus truncatus* snail**

➤ I.H host of *Schistosoma haematobium*

➤ Inside the snail asexual reproduction occurs:

Miracidium ➡

sporocyst ➡ sporocyst

➡ furcocercous cercaria

(no redia stage)



***Bulinus truncatus* snail**

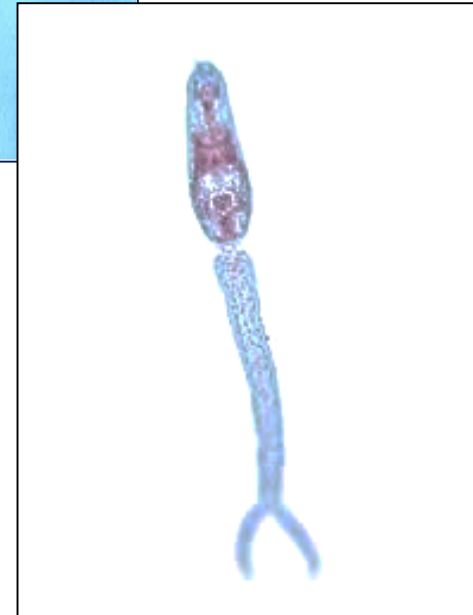


Schistosoma haematobium Cercaria (I.S)

Body : Oral and ventral suckers, primitive gut and 5 pairs of penetration glands.

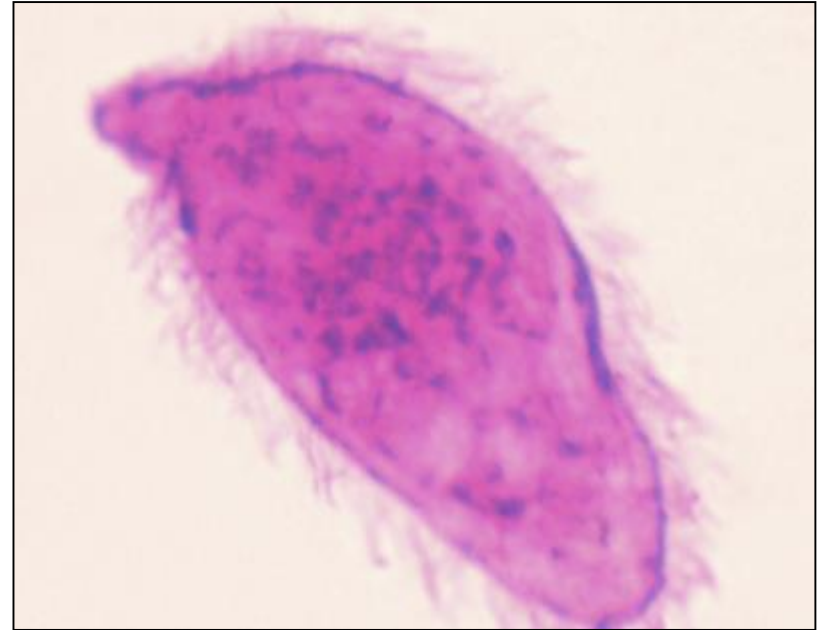
Tail : Forked

(Furcocercuscercaria).





Schistosomulum



Miracidium

Trophozoite of *Trichomonas vaginalis* (D.s & I.S)

Shape: Oval to pear in shape with small cytosome.

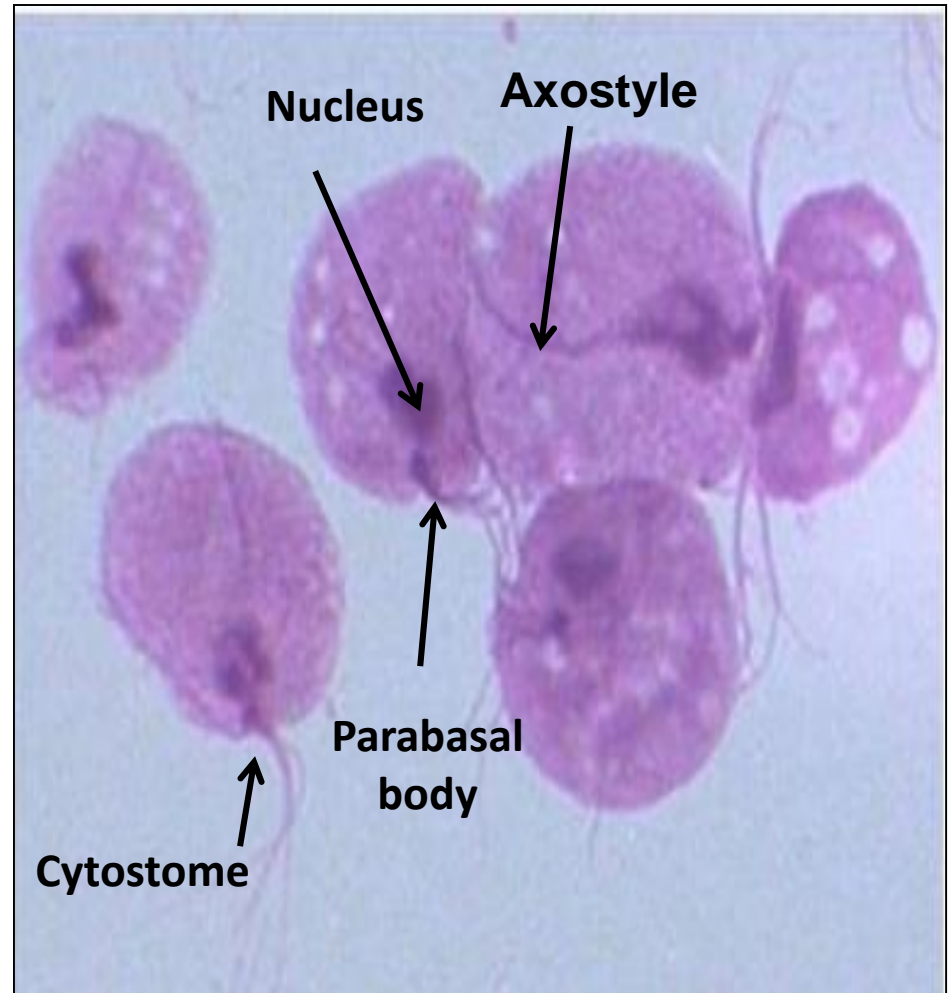
Nucleus: Large oval anterior.

Flagellae : 5 (4 free anterior & one marginal (1/2 body)).

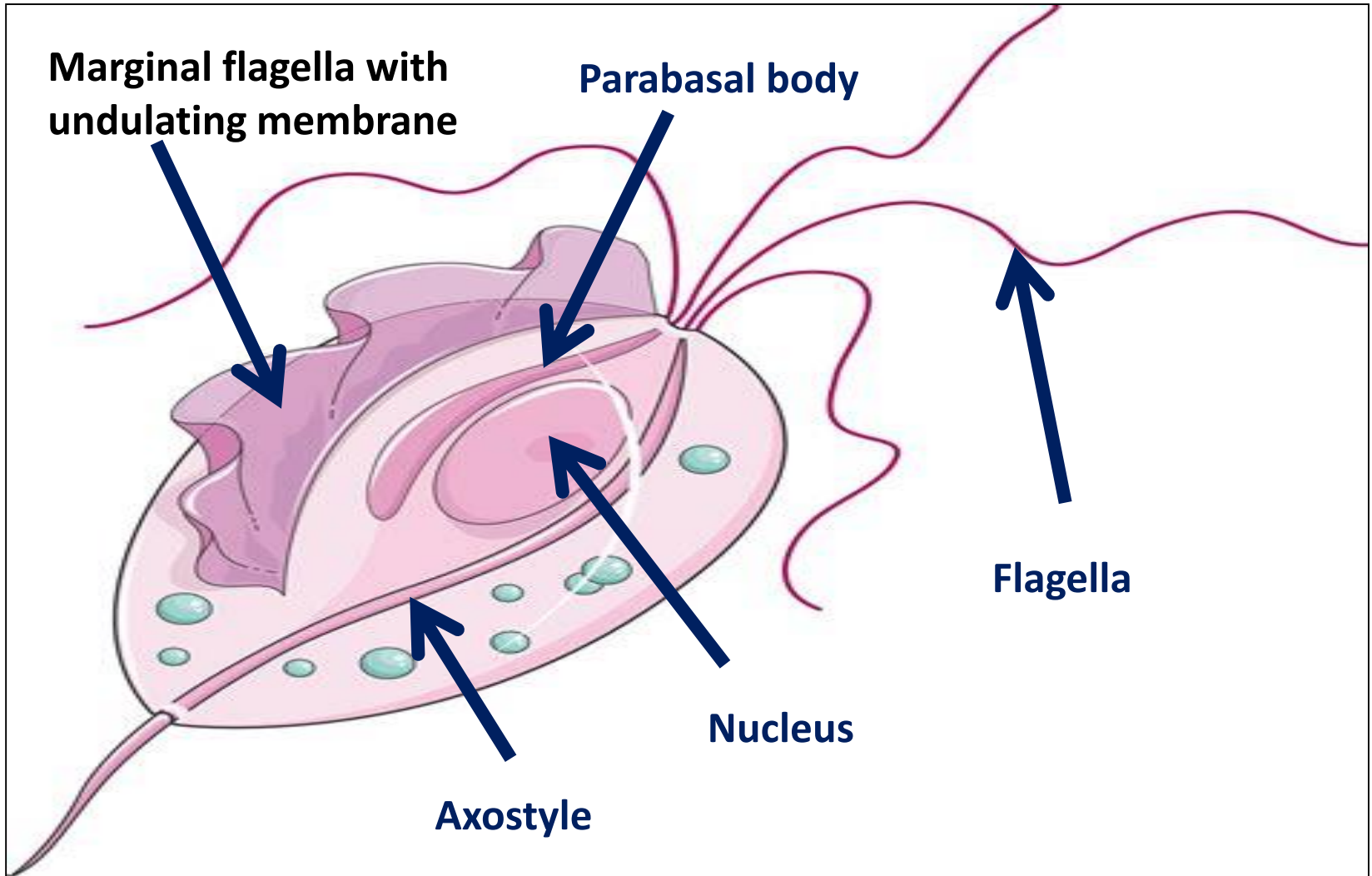
Axostyle: One rod extends beyond the posterior end.

Parabasal body: thick road.

Habitate: Vagina, cervix and urethra in female & prostate and urethra in male.

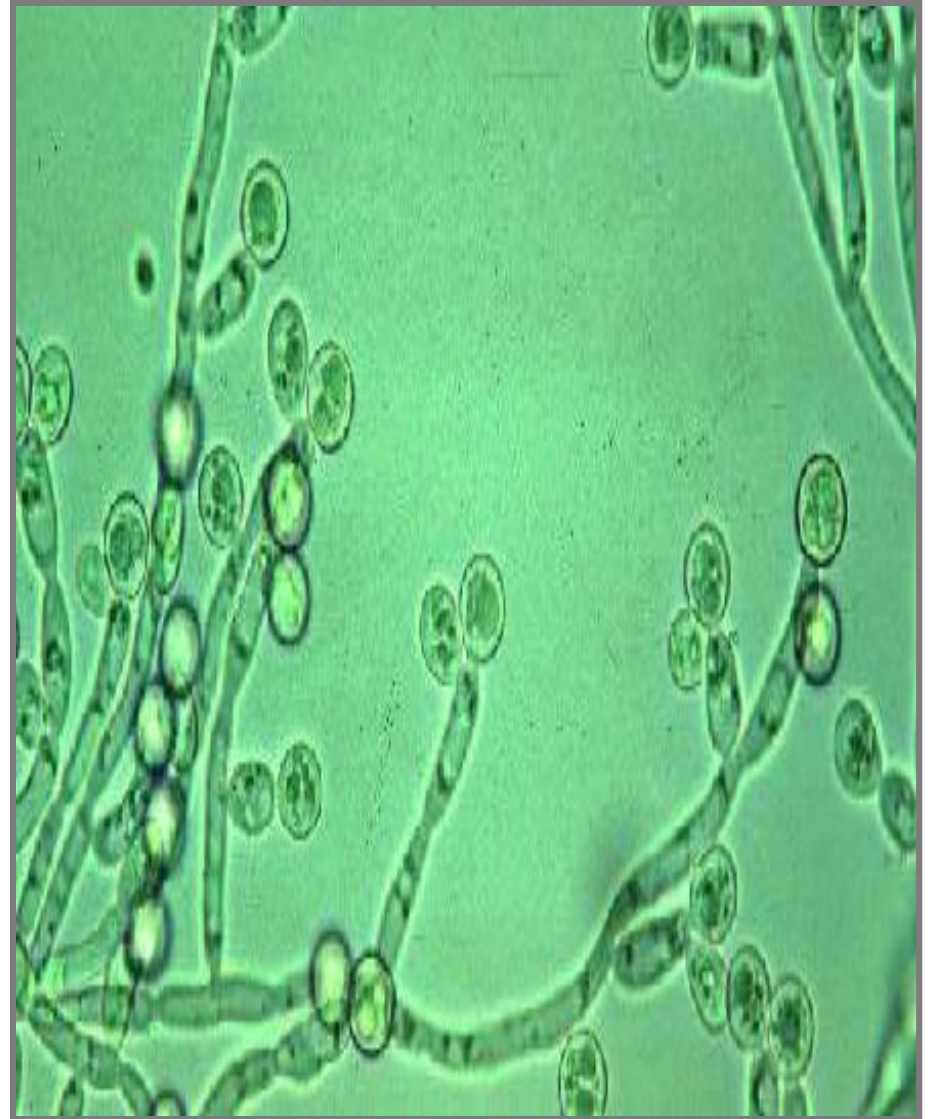


Trophozoite of *Trichomonas vaginalis* (D.S & I.S)

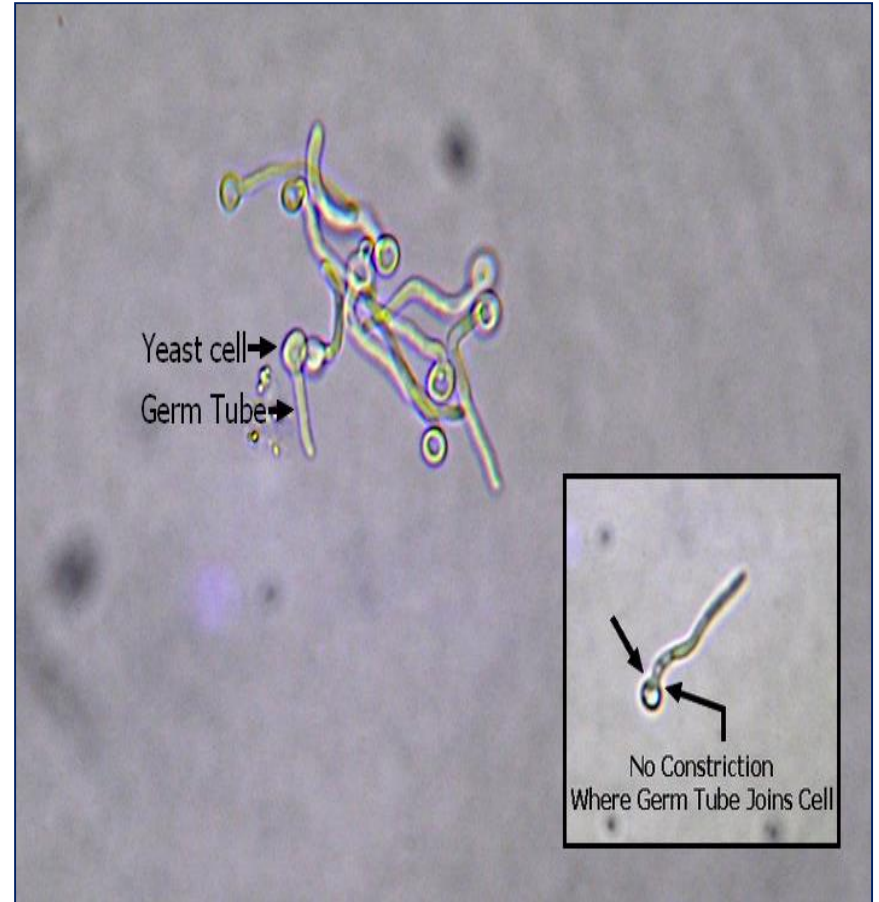
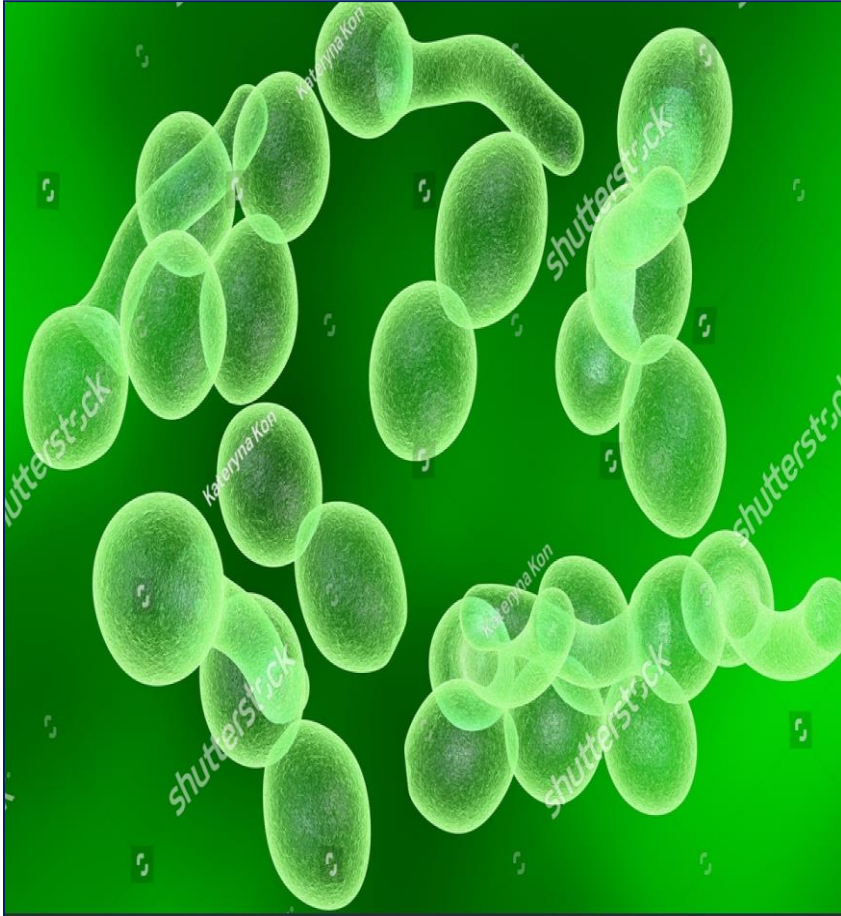


Candida albicans

- ❖ Oval gram positive.
- ❖ Budding yeast which produce pseudohyphae.
- ❖ It ferments glucose & maltose with acid & gas production.
- ❖ **Terminal Chlamydospore** is formed on corn meal agar.
- ❖ **Germ tube** is formed when cultured colonies is incubated with human serum at 37 C for 30 min.



Germ tube production





Phthirus pubis



Sarcoptes scabiei
adult female