

PNS LAB

Wateen archive

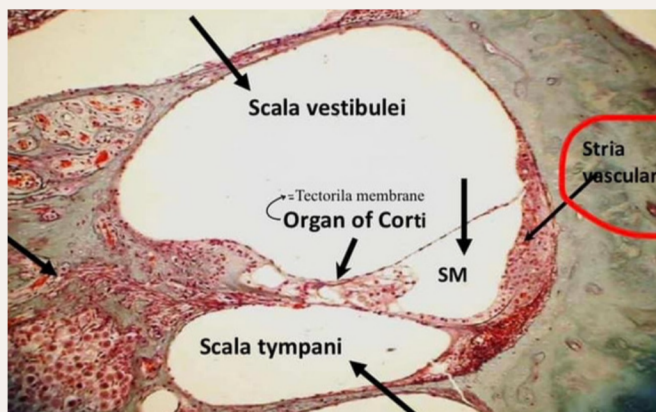


DONE BY :

الطب والجراحة
لجنة

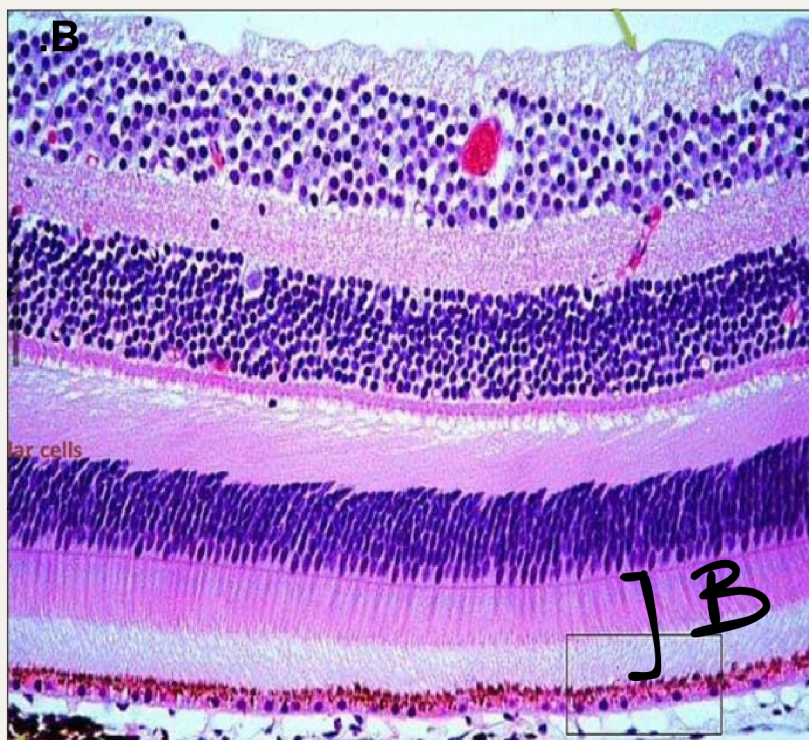


- Type of cells in the pointed layer :
- Simple Columnar
- Simple Cuboidal
- Stratified Cuboidal
- Stratified Squamous
- Pseudostratified columnar ✓



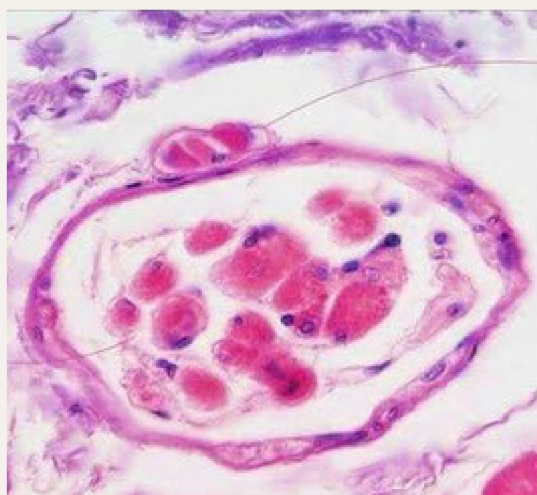
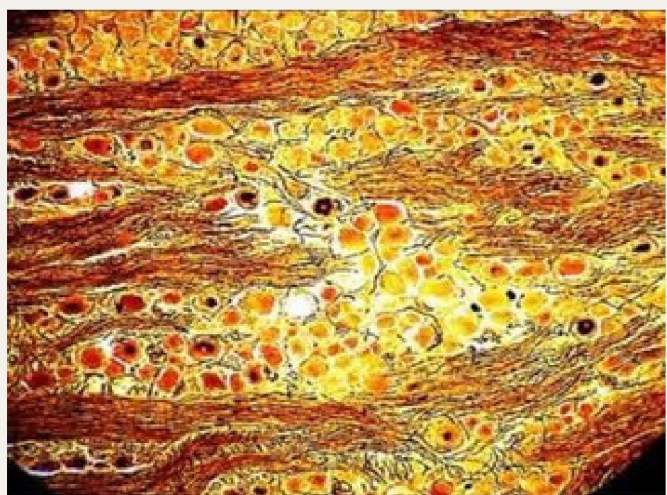
- Structure D is :
- Organ of corti

The layer where retinal detachment occur :

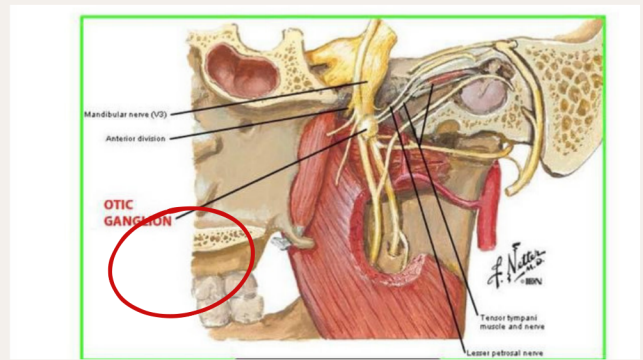


The spinal ganglion

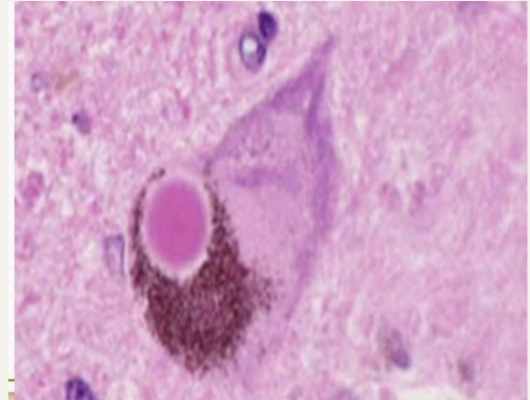
Muscle spindle



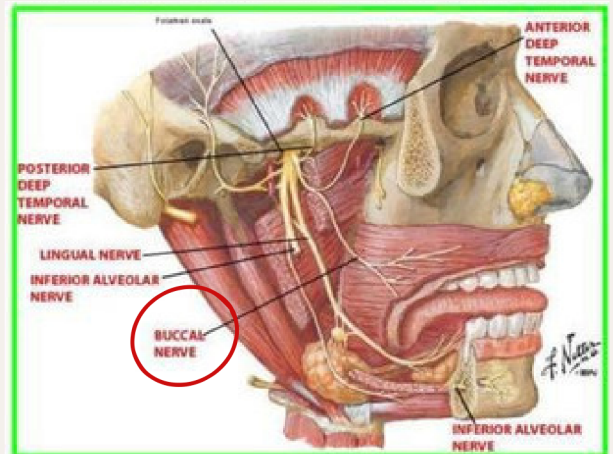
Correct about the pointed structure:
Receive preganglionic fiber from
lesser petrosal ✓



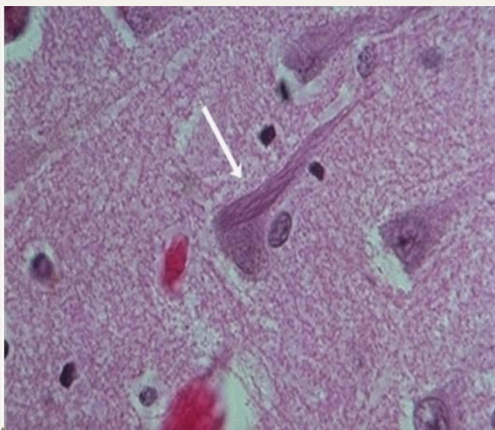
Regarding this picture ,wha correct:
alpha synuclein ✓



Correct about the pointed nerve :
arise from anterior division ✓



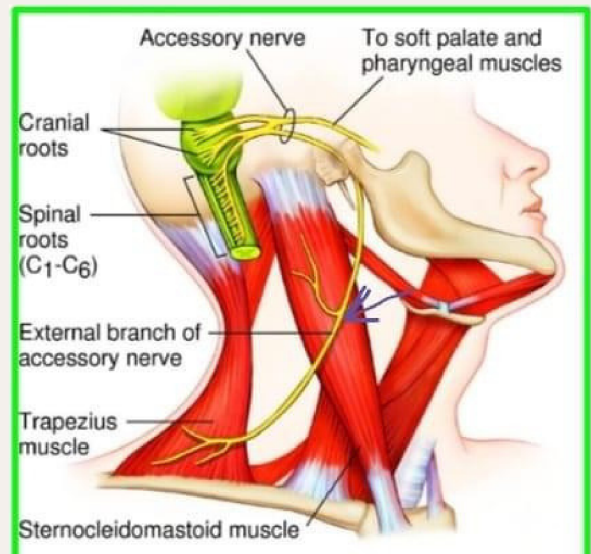
Alzheimer disease



Vitamin B1 deficiency

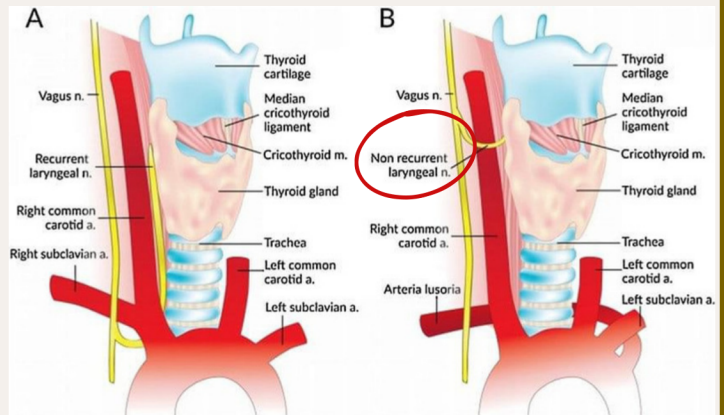


The nerve which supply this muscle:
 spinal root of accessory nerve ✓

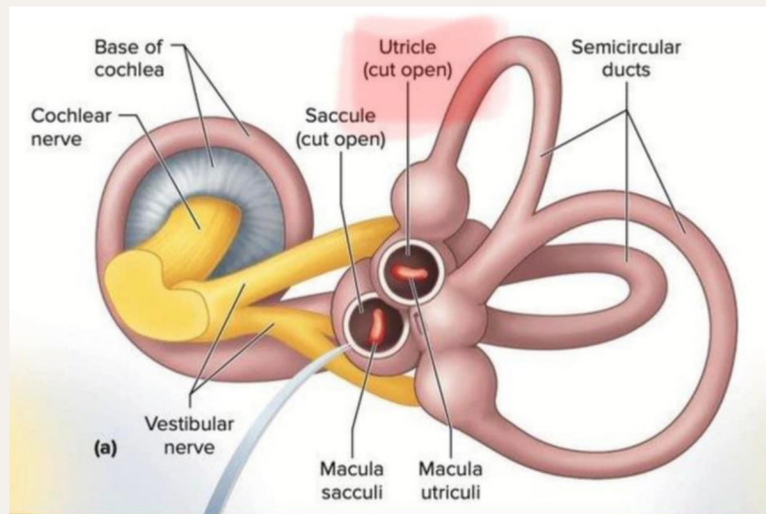
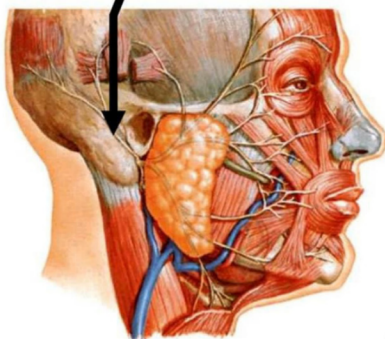


**

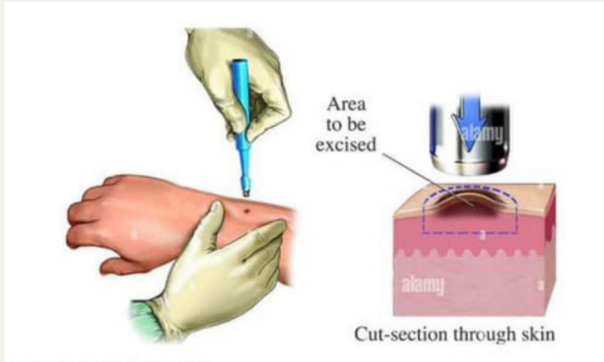
- a. Internal laryngeal nerve
- b. Right recurrent laryngeal
- c. Left recurrent laryngeal nerve
- d. Anomalous recurrent laryngeal N ✓



Posterior
 auricular nerve
 M



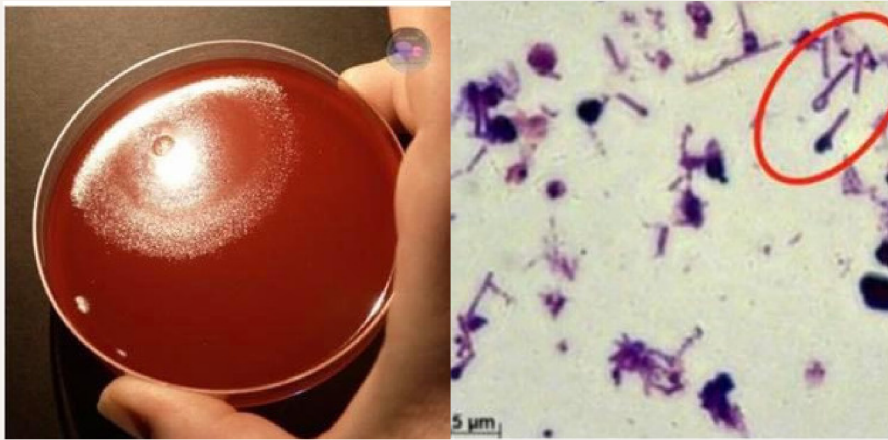
Leprosy



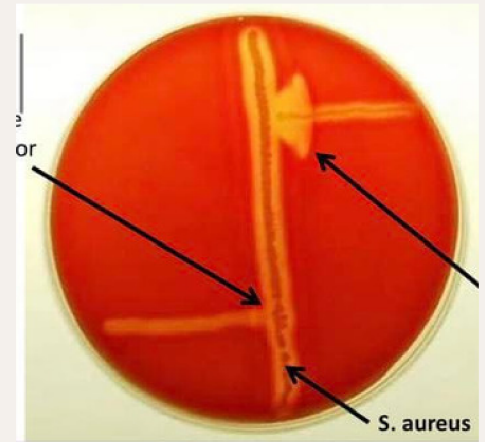
Botulism



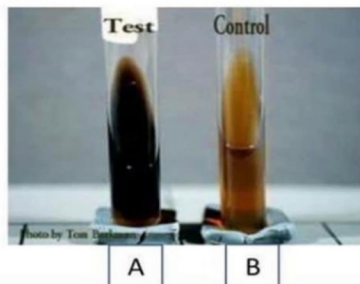
Tetanus



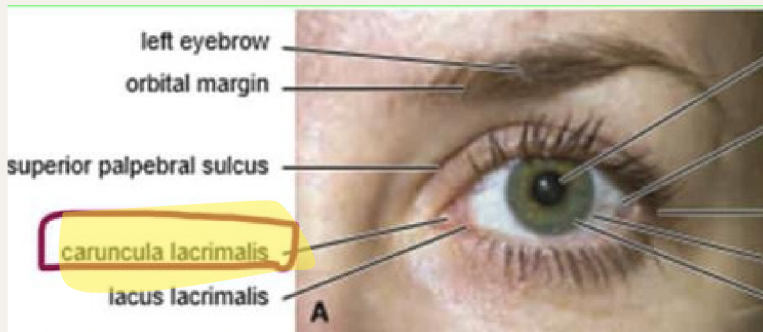
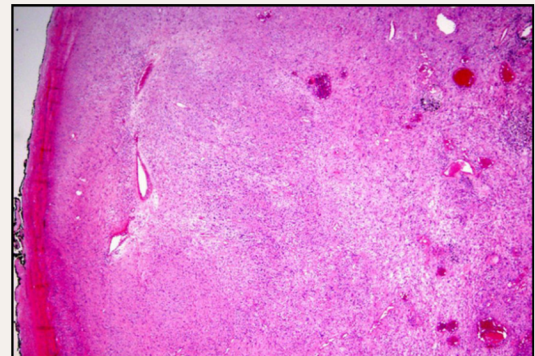
CAMP test



Bile Esculin test



Shwannoma



Purple color positive for hippurate hydrolysis test

