

ARCHIVE CELL

أثر MID

DONE BY :

Shefa Hisham

Sondos Dyap

CORRETED BY:

Ahmad Qwasmi

الطب والجراحة
لجنة

1.The signal type between the cell and the ECM is:

- A)Juxtracrine**
- B)Autocrine**
- C)Endocrine**

Answer:A
and could be paracrine

2.The farthest signaling mode is :

- A) Autocrine**
- B)Paracrine**
- C)Endocrine**

Answer: C

3.Which of the following aren't embedded into lipid biliary?

- A) peripheral proten**
- B) integral protein**
- C)lipids**

Answer:A

4.Which organelle in the liver detoxifies the waste products?

- A) smooth endoplasmic reticulum**
- B) lysosomes**
- C) mitochondria**
- D)Golgi apparatus**

Answer:A

5. which of the following ISN'T of the characteristics of freezing technique?

- A) can be kept for a long time**
- B) Rapid technique**
- C) Don't use chemical**
- D) No dehydration**

Answer:A

6. which of following is TRUE about the H stain?

- A) it stains the nucleus with blue color**
- B) it Stains the r-Rna with red color**
- C) It stains the cytoplasm with blue color**
- D) Stains basic**

Answer:A

7. which stain is used for nerve cells staining?

- A)H and E**
- B)Silver**
- C)Orecin**
- D)Metachromatic**

Answer:B

8. the type of culturing when the cell are directly cultured from the tissue is:

- A)primary culture**
- B) secondary culture**
- C) tertiary culture.**

Answer:A

9. Long-distance signaling is also called?

- A) endocrine signaling**
- B) Autocrine signaling**
- C) paracrine signaling**
- D) Juxtacrine signaling**

Answer:A

10. which type of junction prevents passage of molecules?

- A) Occluding (Tight junction)**
- B) Gap junction**
- C) Desmosomes**
- D) Adherens junction**

Answer:A

11. which proteins contribute with forming the occluding junction?

- A) occludin+claudins**
- B) Cadherins**
- C) Integrins**
- D) Selectins**

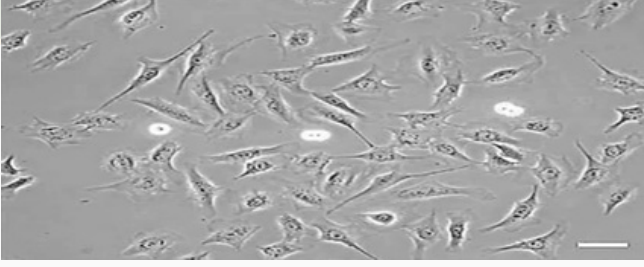
Answer:A

12. what cause the pemphigus vulgaris?

- A) defect in desmoglein**
- B) Bacteria infection**
- C) Fungal infection**
- D) Viral infection**

Answer:A

13. What type of microscopes is used?



- A) Phase contrast microscope
- B) Fluorescence microscope
- C) Differential interference microscope

Answer:A

14. All of the following are the four basic tissues except:

- A) connective
- B) nervous
- C) lymphatic
- D) muscular
- E) epithelial

Answer: c

15. Resolution power of healthy naked eye is:

- A) 0.2 mm
- B) 0.2 um
- C) 0.2 nm
- D) 2.0 mm

Answer:A

"لقد كنا نداوي التعب بالتعب، والنصب بالنصب،
فإن تعبنا أجسادنا من العبادة حَمَلْنَاها على مزيدٍ
من تلك العبادة، فذهبت تلك به، وكُنَّا إذا وجد
الشيطان إلى القلب سبيلاً بخدعة الرّاحة، طردنا
الشيطان بترك الرّاحة، وتلّونا موقنين: "فإذا قرعَتِ

فانصب" ♥

أرض الله | أيمن العتوم -