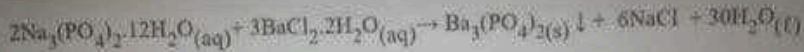


unknown solid mixture and its percentage composition?

Molecular equation:



Mass of $\text{Ba}_3(\text{PO}_4)_2(s)$ produced = 0.188 g

Moles of $\text{Ba}_3(\text{PO}_4)_2(s)$ produced = mass / MM

$$= \frac{0.188 \text{ g}}{601.93 \text{ g/mol}} = 3.12 \times 10^{-4} \text{ mole}$$

The L.R is $\text{BaCl}_2 \cdot 2\text{H}_2\text{O}$, so,

Moles of $\text{BaCl}_2 \cdot 2\text{H}_2\text{O}$ reacted = (3) (moles of $\text{Ba}_3(\text{PO}_4)_2(s)$ produced)

$$= (3) (3.12 \times 10^{-4}) = 9.370 \times 10^{-4} \text{ mol.}$$

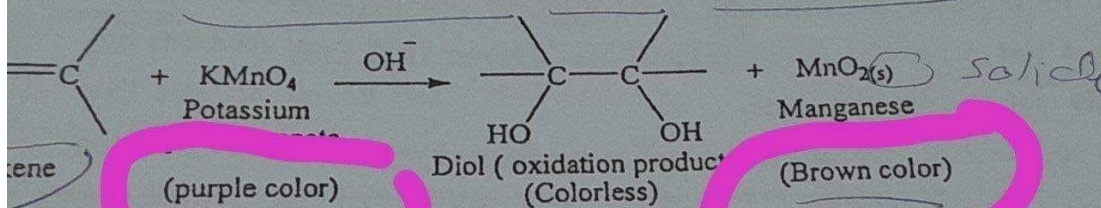
Mass of $\text{BaCl}_2 \cdot 2\text{H}_2\text{O}$ reacted = (moles) (MM)

$$= (9.370 \times 10^{-4} \text{ mol}) (244.27 \text{ g/mol}) = 0.2289 \text{ g}$$

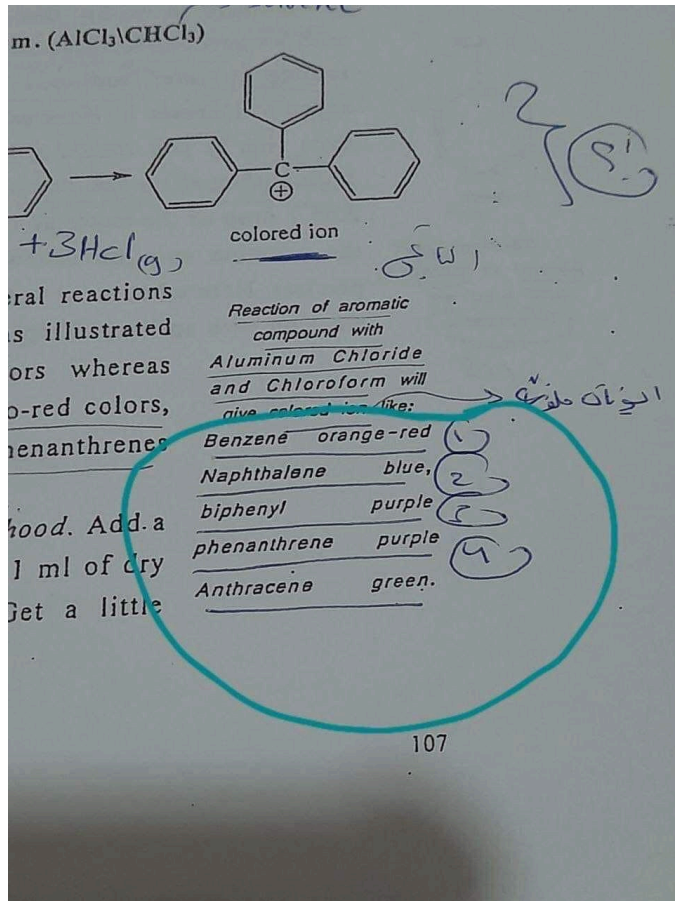
كان في سؤال ع آخر تجربة
للمركبات العضوية الها علاقة بالالوان

one tube and may be detected by carefully holding a strip of moist blue litmus down in the test tube.

C. Potassium Permanganate (KMnO_4), The Baeyer Test



Potassium permanganate will react with double bonds forming diols, followed by more extensive oxidation. This reaction will take place in either acidic or basic solution. In base, the purple color disappears, forming manganese dioxide. If concentrated enough, it will precipitate as a brown flocculent precipitate.



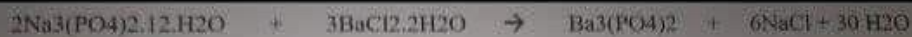
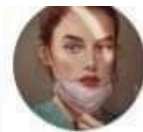
Hala M AL-Tarawneh 🖐️

كان في سؤال انه شو اخر خطوه بتعملها لما تطلع من المختبر

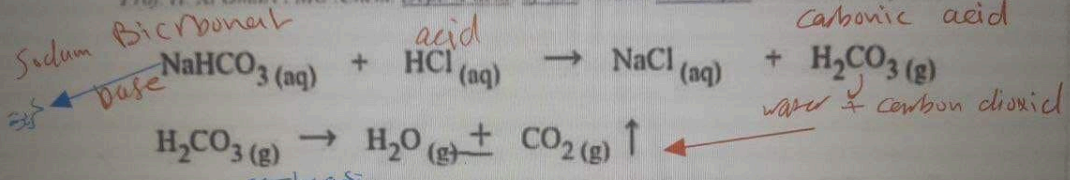
الجواب انو تنظيف الادوات وغسل الايدي

Wash hand 🖐️ 🧼

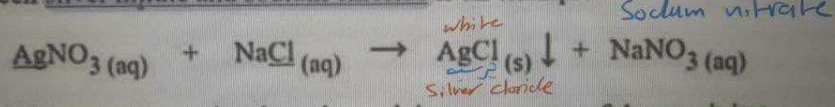
موجوده بأول تجربة



Prof. H. Al Omari, MU Chem. Dept. Facul. of Sci. Chem. 003 Exp. 3. Chemical Properties



Precipitate formation: formation of an insoluble substance. The reaction between silver nitrate and sodium chloride is an example.



It is important to notice the color and the appearance of the precipitate, it may be crystalline or cloudy.

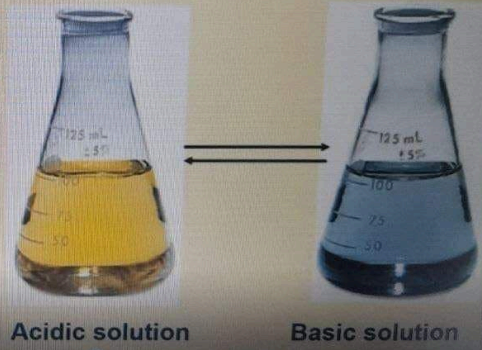
إذا خلطنا مادتين
 في بعض الأحيان
 نحصل على مادة صلبة
 تسمى ترسباً أو هطولاً

(aq) Aqueous → dissolve in water
 محلول في الماء

7. The Neutralizing Capacity of Antacid Tablets

Bromothymol blue

- An acid base indicator
- The color of Bromothymol blue changes from **Yellow** to **Blue**



Hala M AL-Tarawneh 🙋

سؤال ع الالوان



Flammable (Red); Instability (Yellow); Health (Blue)
and Special Notice (White)



1 س أعجيني رد

Hala M AL-Tarawneh 🙋

سؤال انه هاي لشو بتشير



وفي كمان واحد عن الغاز المثالي
كان بحكي عن خصائص الغاز اللي
بنقدر نطبق عليه القانون بس ناسية
نص السؤال بالزبط شو كان



benzene is the most common. Because benzene as recently come under suspicion as causing leukemia, it will not be used here. It is added along with xylene and toluene to high-octane gasolines.



1. Acidic substance produced :
"H⁺"
2. phph indecator has:
"Colorless in acidic medium"
3. solubility is:
كان تعريفها موجود حرفي
4. NaOH considered as:
"strong base"
5. NaOH + HCl can produced:
"salt and water"
6. The physical properties are used for :
كان الجواب اهداف التجربة نفس الي بالسلايد
7. primary standerd is:
خصائصهم حكاها الدكتور بالريكورد
8. what is the limiting reactant
9. The reaction $KHP + NaOH \rightarrow H_2O + Na KHP$ is
10. Hands must be washed after:-
11. To test the excess (PO₄) we shall add :
"Ba²⁺"