

وسهلا



أهلا

يُمنع أخذ السلايدات بدون
إذن المحرر واي اجراء
يخالف ذلك يقع تحت طائلة
المسؤولية القانونية
جميع المعلومات للاستخدام
التعليمي فقط

الأستاذ الدكتور يوسف حسين

أستاذ التشريح وعلم الأجنة - كلية الطب - جامعة الزقازيق - مصر

رئيس قسم التشريح والأنسجة والأجنة - كلية الطب - جامعة مؤتة - الأردن

دكتورة من جامعة كولونيا المانيا

جروب الفيس د. يوسف حسين (استاذ التشريح)

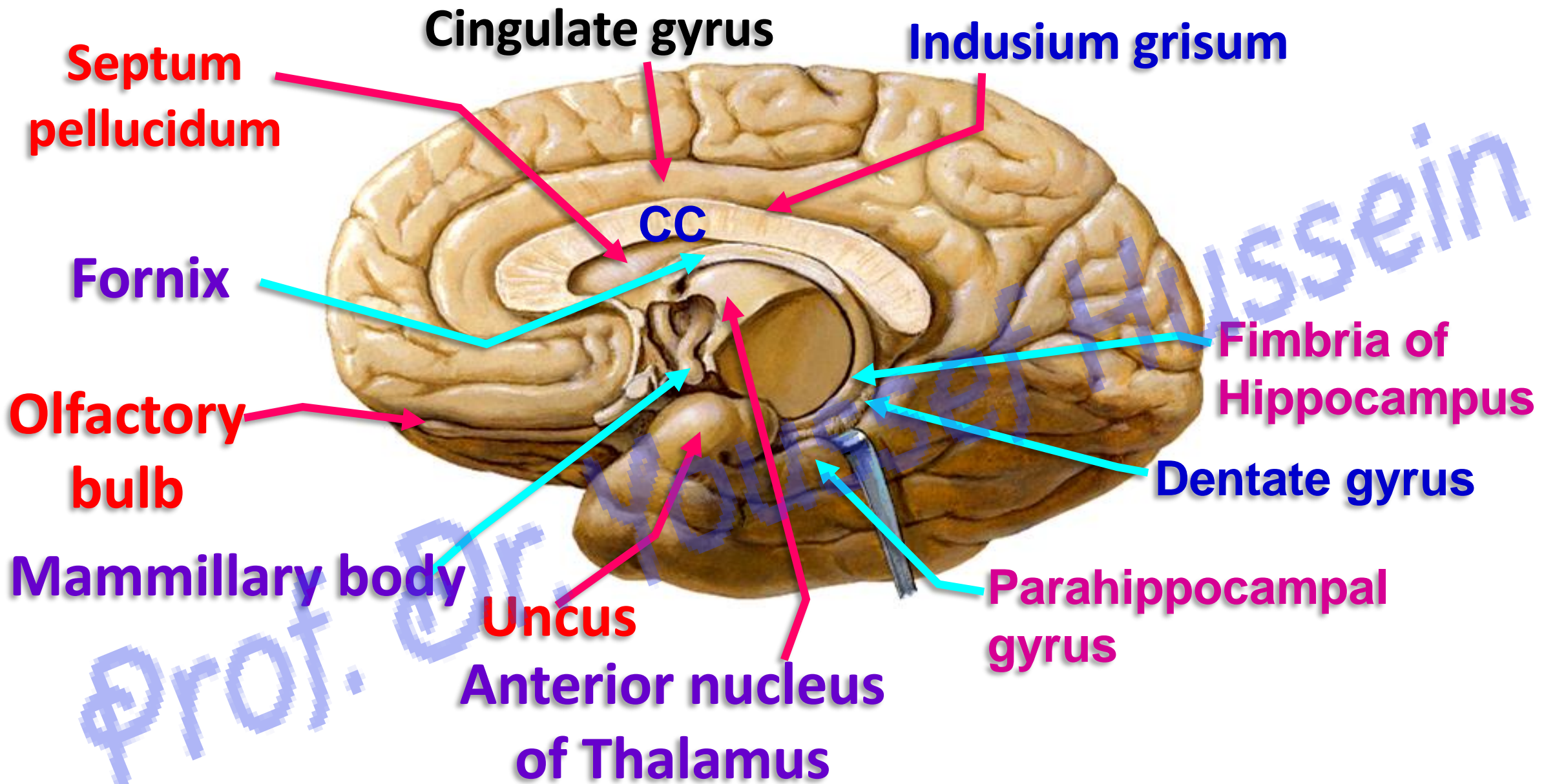
الواتس اب 00201224904207

اليوتيوب د. يوسف حسين

Prof. Dr. Youssef Hussein Anatomy - YouTube

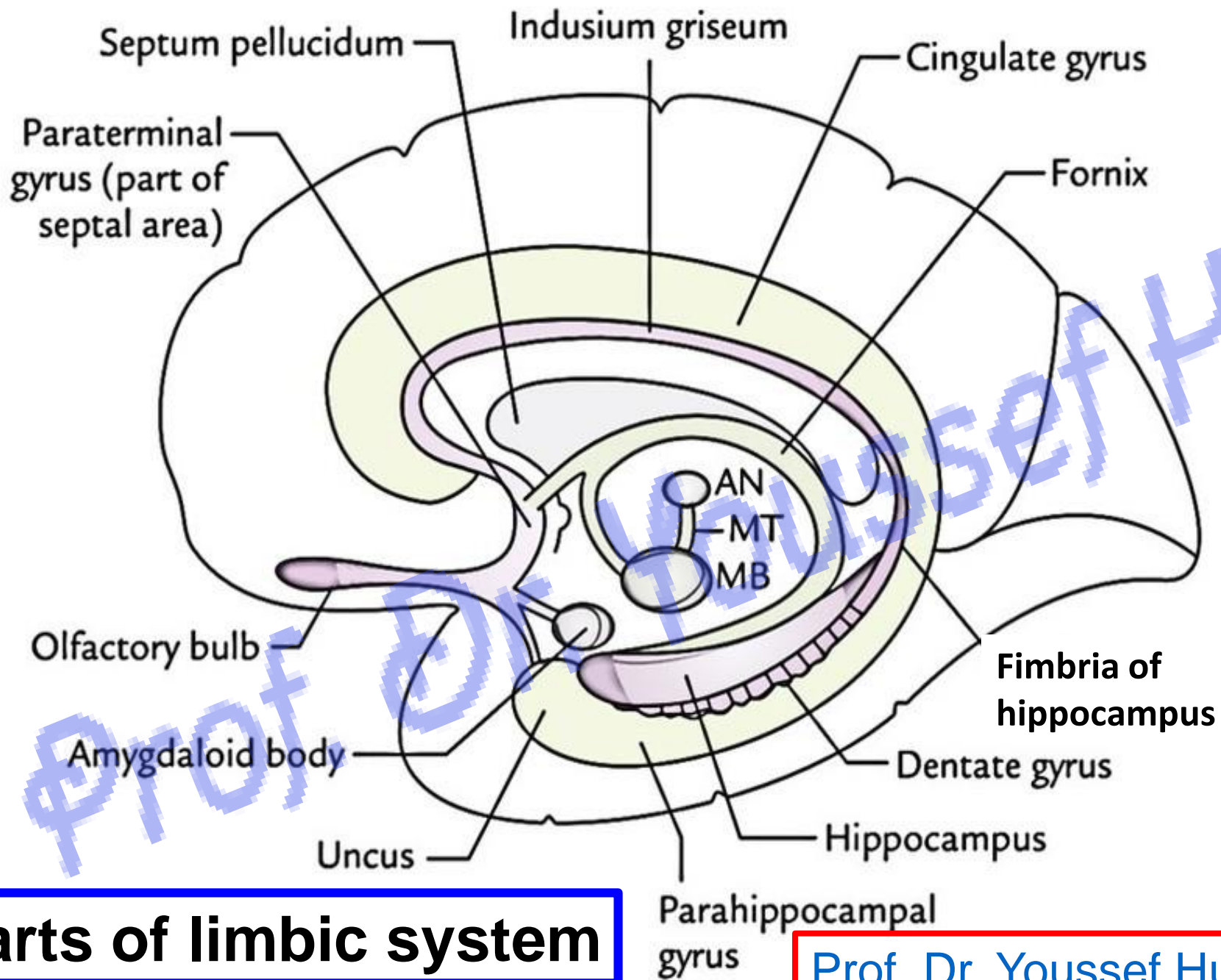
https://www.youtube.com/channel/UCVSNqbibj9UWYaJdd_cn0PQ

Limbic System



Parts of limbic system

[Prof. Dr. Youssef Hussein Anatomy - YouTube](#)



Parts of limbic system

[Prof. Dr. Youssef Hussein Anatomy - YouTube](#)

Parts of limbic system

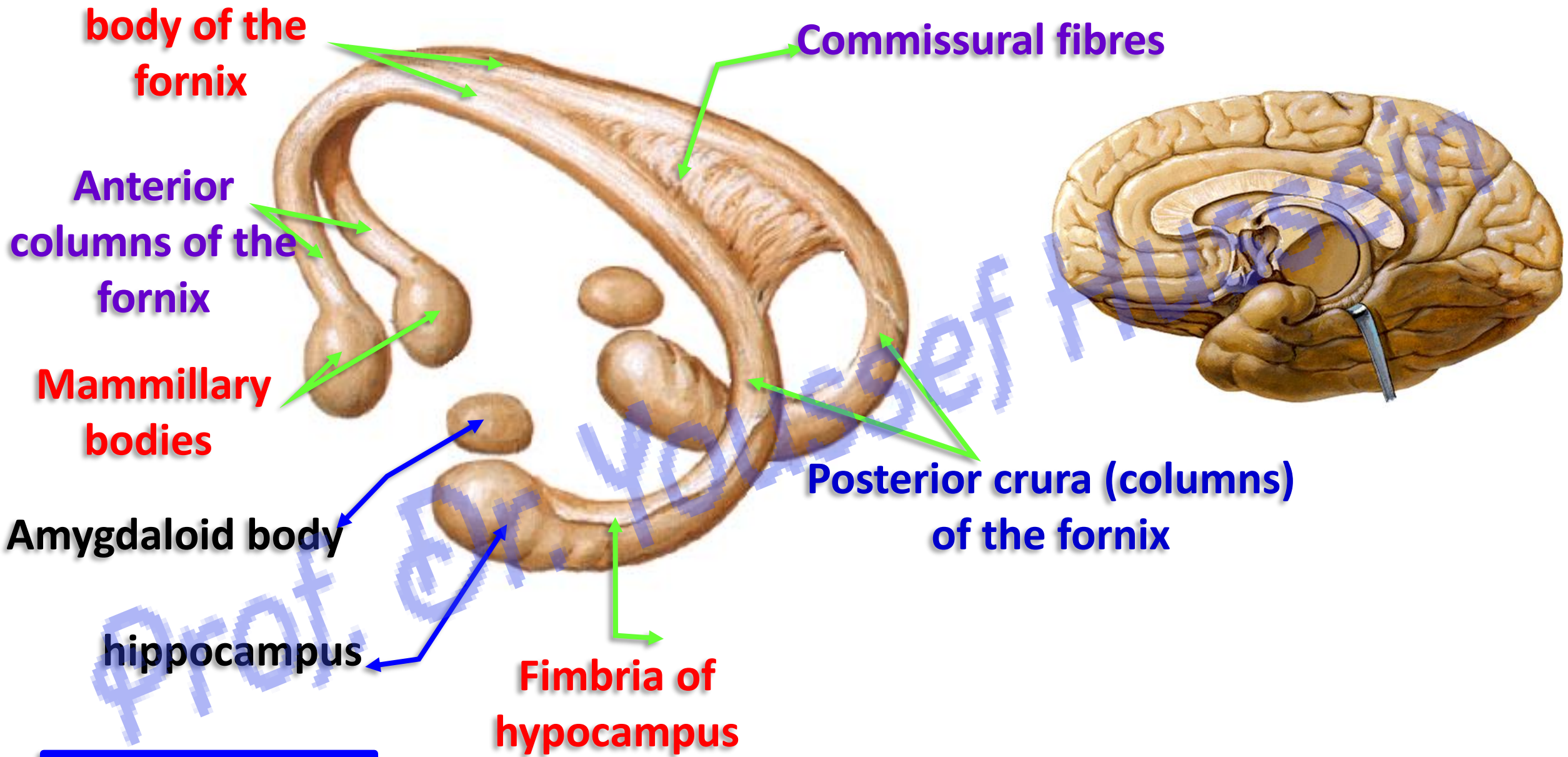
- The name applied to the number cortical and subcortical structures in the form of an arch (limbus) known as **circle of Papez**.
- **Cingulum (association fiber):** from **frontal** lobe just below the rostrum of corpus callosum → extends backwards in the cingulate gyrus → curves in the isthmus → passes forwards in the parahippocampal gyrus → ends in the **uncus**.
- **Indusium griseum**, Thin grey matter covers superior surface of corpus callosum.
- **Septum pellucidum**, thin sheet of white matter between fornix and corpus callosum.
- **Mamillothalamic tract (MT)** from **mammillary body of hypothalamus** to **anterior nucleus of thalamus**.
- **Fornix**
- **Amygdaloid body**
- **Hippocampus**
- **Olfactory pathway**

• Functions of Limbic System

▪ It involved in processing

- **Memory** الذاكرة والنسيان
- **Emotional response including feelings of happiness, fear, anger, and anxiety.** الاستجابة العاطفية بما في ذلك مشاعر السعادة والخوف والغضب والقلق
- **Behavior** السلوك
- **Feeding (satiety & hunger)** التغذية (الشبع والجوع)
- **Maternal instincts as caring for our young** غرائز الأمومة مثل رعاية صغارها
- **Sexual arousal** الإثارة الجنسية
- **Responsible for olfactory related stimuli**
(a person may be vomit or salivate when smell a certain odor)
مسؤول عن المنبهات الشمية (قد يتقيأ الشخص أو يسيل لعابه عند شم رائحة معينة)

Fornix



The fornix

[Prof. Dr. Youssef Hussein Anatomy - YouTube](#)

Fornix

- The fornix is the **Efferent** system of the hippocampus.
- It forms a part of the **limbic system**.
- **Structure**; It is formed.

[Prof. Dr. Youssef Hussein Anatomy - YouTube](#)

1- Two Posterior columns (Crurae);

- Each crus is the continuation fibers of the fimbria of the hippocampus.
- They connected together by commissural fibers
- They come together in the median plane to form the body.

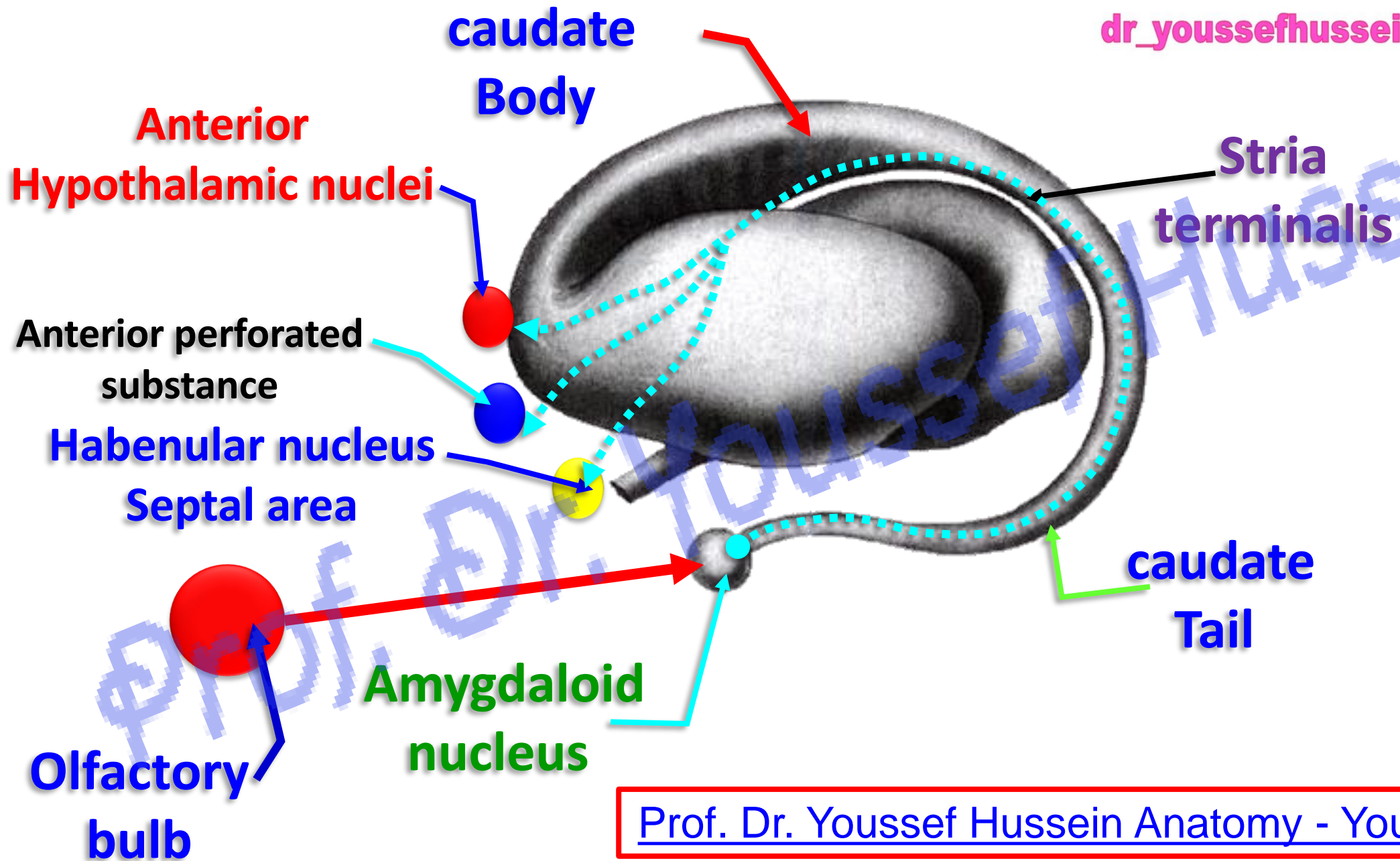
2- Body; triangular in shape, with narrow anterior and broad posterior.

- **Upper surface** is connected with lower surface of corpus callosum by **septum pellucidum**.
- **Lower surface** rests on upper surface of the 2 thalami and roof of the 3rd ventricle.

3- Two anterior columns; end **a) Mammillary body (hypothalamus)** through mammillothalamic tract to anterior nucleus of thalamus to cingulate gyrus .

b) Septal area, and orbital cortex

Amygdaloid body



4- Amygdaloid Body لوزة المخ

- It joins to the tail of caudate nucleus.
- **It is situated in medial part of the temporal pole close to the uncus**

** **Afferent**; from the olfactory bulb.

اليوتيوب د. يوسف حسين

** **Efferent**; Stria terminalis accompanies the medial edge of caudate nucleus **(LIMBIC SYSTEM)** to anterior hypothalamic nuclei , anterior perforating substance and habenular nucleus of the epithalamus

- **Functions:**

[Prof. Dr. Youssef Hussein Anatomy - YouTube](#)

- It is part of the olfactory and **limbic systems**
- It plays a role in smell, motivation, emotional behavior (fear, anxiety, anger, aggression, pleasure, and fear memory)
يلعب دورًا في حاسة الشم ، والتحفيز ، والسلوك العاطفي (الخوف ، القلق ، الغضب ، العدوانية ، المتعة ، وذاكرة
الخوف)
- Amygdaloid has 3 functions (olfaction, sexual excitement and recent memory).

**** Functions of the Hypothalamus**

- 1- Endocrine control** by formation of releasing stimulating factors or releasing-inhibiting factors that control the hormones of the anterior lobe of the pituitary gland.
- 2- Neuro-secretion** to the posterior lobe of the pituitary gland;
 - a- Vasopressin** causes reabsorption of water by the kidney and its deficiency leads to diabetes insipidus.
 - b- Oxytocin** causes contraction of mammary gland and uterine muscles.
- 3- Control of the autonomic nervous system.**
- 4- Regulation of body temperature:**
- 5- Regulation of food and fluid intake.**
- 6- Sexual behavior and reproduction.**
- 7- Biological clocks** (sleep and wakefulness).

Hippocampal Formation

HIPPOCAMPUS

Fimbria of Hippocampus

Fornix

Mammillary
body

Uncus

Hippocampus

Dentate gyrus



Prof. Dr. Youssef Hussein Anatomy - YouTube

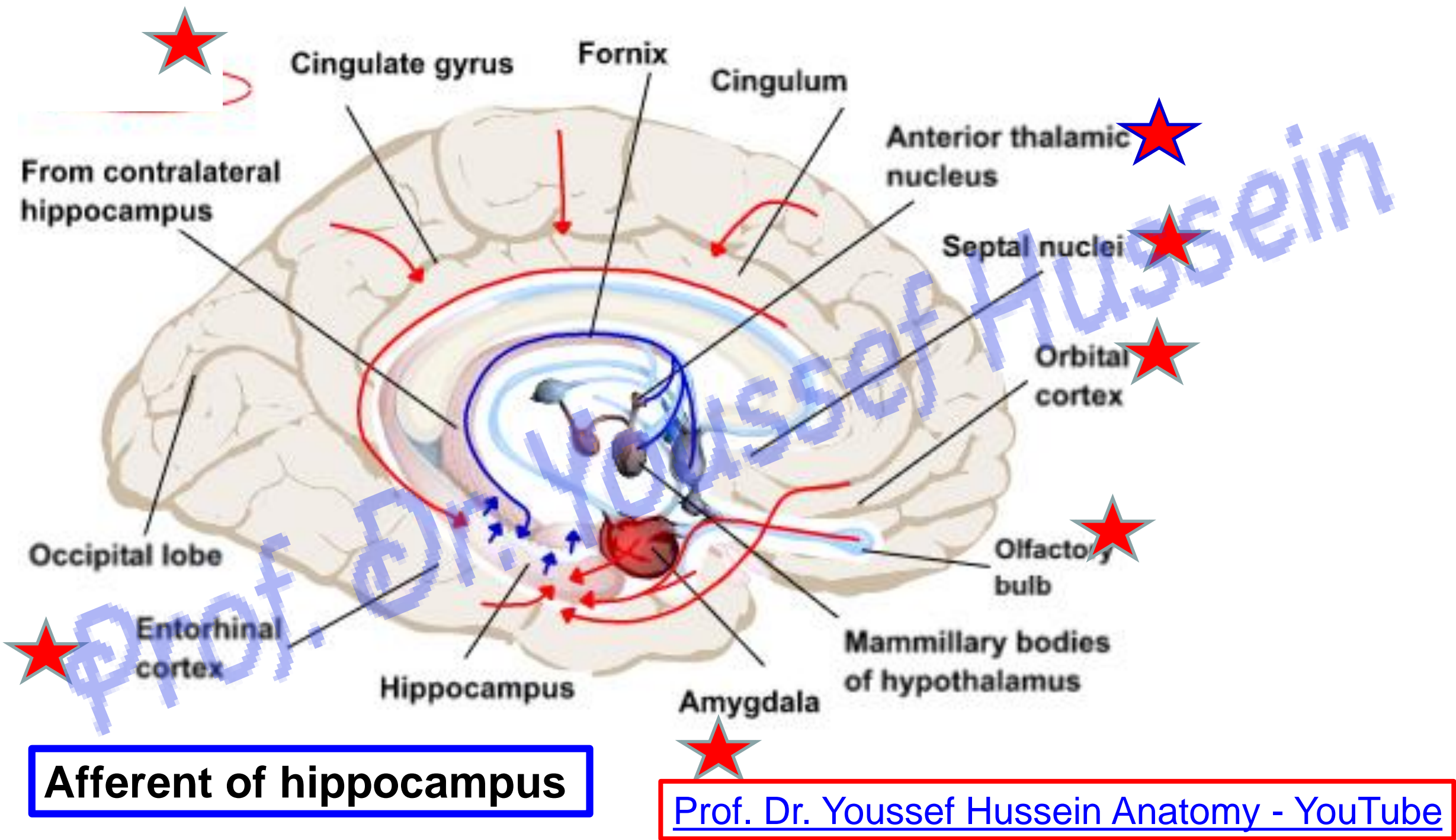
- A **hippocampal formation** is located in **temporal lobe (medial)** of each cerebral cortex, medial to the inferior horn of the lateral ventricle.

Hippocampal formation

- It contains two main parts, Hippocampus and dentate gyrus (below the fimbria, it has a toothed surface), **Hippocampus is a center of Emotion and Memory**
 - **Hippocampus** الحصين
- It is called seahorse فرس البحر or **Cornu Ammonis**, قرن أمون
- Its abbreviation CA (CA1,CA2,CA3)
- Its anterior end broad and continues with the **uncus**.
- Its posterior end is narrow, a thin film of white mater called **alveolus** (axons of hippocampal cells).
- The fibers of alveolus thicken to form **fimbria of hippocampus**

Efferent (Output) of Hippocampus

- **Fimbria (Efferent - Output)** which are continuous posteriorly with the **fornix** that ends in
 - **Mammillary body (hypothalamus)** through mammillothalamic tract to anterior nucleus of thalamus to cingulate gyrus .
 - **Septal area, and orbital cortex**



Afferent of hippocampus

[Prof. Dr. Youssef Hussein Anatomy - YouTube](https://www.youtube.com/channel/UC...)

Afferent (Input) of Hippocampus

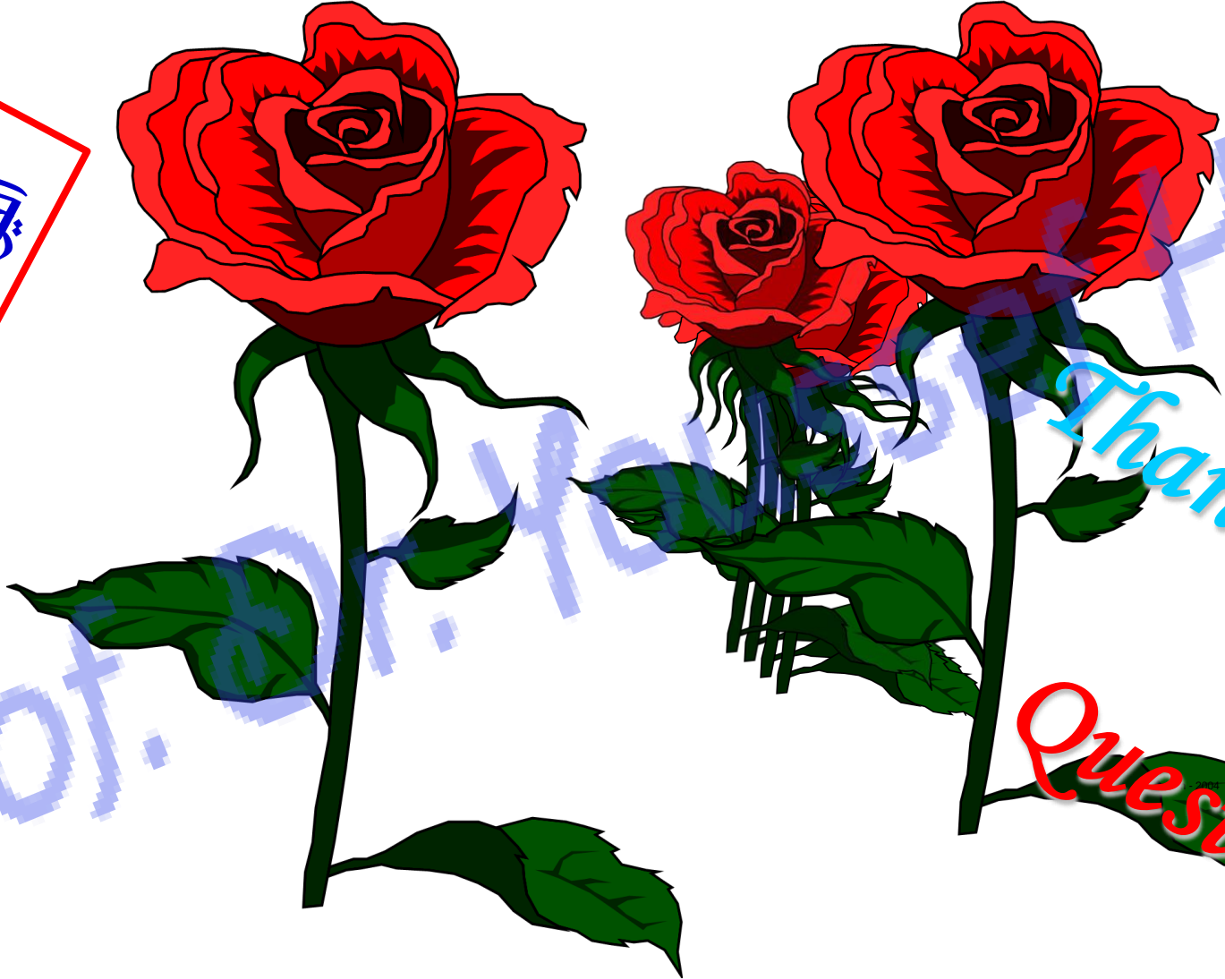
- **1- Entorhinal cortex** of parahippocampal gyrus is a major source of inputs to the hippocampus via the axons called perforant path → dentate gyrus → CA3-to-CA1 (**Trisynaptic circuit**)
- **2- Amygdala**
- **3- Olfactory bulb**
- **4- Orbital cortex**
- **5- Cingulate cortex**
- **6- Thalamus (anterior nucleus)**
- **7- Hypothalamus (Mammillary body)**
- **8- Septal nuclei**
- **9- Temporal lobe cortex**
- **10- Cerebellum (fastigial nucleus)**

It is important to remember that afferents and efferents of the hippocampus are bundled together in the same paths.

https://www.youtube.com/channel/UCVSNqbibj9UWYaJdd_cn0PQ

يُمنع أخذ السلايدات بدون
إذن المحرر و اي اجراء
يخالف ذلك يقع تحت طائلة
المسؤولية القانونية
جميع المعلومات للاستخدام
التعليمي فقط

اليوتيوب د. يوسف حسين



Thank You

Questions

<https://www.youtube.com/@ProfDrYoussefHusseinAnatomy/playlists>