

QUIZ TIME ARCHIVE

SUBJECT:

MICRO

طوفان الارقصى

1.Regarding poliovirus and poliovirus vaccines, which one of the following is MOST ACCURATE?

- a- Poliovirus is sensitive to acidic pH.
- b- Poliovirus remains latent within sensory ganglia, and reactivation occurs primarily in immunocompromised patients.
- c- Reversion of serotype 3 to virulence could occur with the oral Sabin vaccine that can cause paralytic polio.
- d- Serotype 3 of poliovirus is the most virulent type.
- e- Being given orally considered an advantage for the killed Salk vaccine

Ans:)(:b

Lec 7

2.All are true about poliovirus, EXCEPT?

- a. Type I is responsible for most epidemics.
- b. It is transmitted by feco-oral route.
- c. Type I responsible for vaccine paralytic poliomyelitis.
- d. Asymptomatic infections are common in children.
- e. No permanent carrier in poliovirus infection

Ans:)(c

3.A preschool day care has reported that the majority of the children are complaining of sore throats. A closer examination of the situation indicates that they also have slight fevers and vesicular lesions)some of which have ulcerated(on their pharyngeal mucosa together with vesicular rash on the hands and feet. The most likely cause is -----?

- a- Enterovirus 68.
- b- Enterovirus 70.
- c- Coxsackie A virus.
- d- Coxsackie B virus.
- e- Poliovirus.

Ans:)(c

All of the following true about polio virus except :

There are Four serotypes

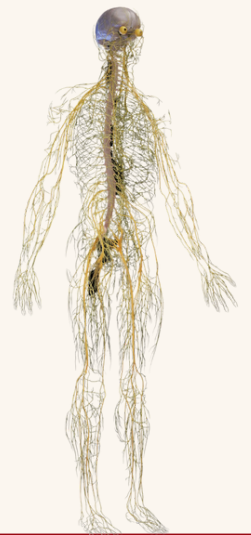
Which of the following virus cause hand foot and mouth disease

Coxakie Av

**case about child with flaccid muscle, what the sample needed in diagnosis _stool
(poliomyeliti**

Acute hemorrhagic conjunctivitis is seen in?

Enterovirus 70



Lec 2

1. Each of the following statements concerning rabies and rabies virus is correct EXCEPT?

- a- The virus has a lipoprotein envelope and single-stranded RNA as its genome.
- b- The virus has a single serotype.
- c- Its transmission could be through non-bite exposure.
- d- The virion contains an RNA polymerase.
- e- Infected neurons contain intra-nuclear inclusion bodies called Negri bodies

Ans:)e

2. Regarding prions, which one of the following is the MOST ACCURATE?

- a- The genome of prions consists of a negative-polarity RNA that has a defective polymerase gene.
- b- Abnormal prion protein is associated with the cell membrane.
- c- Prion proteins are encoded by cellular genes.
- d- The main host defense against prions consists of an inflammatory response.
- e- Variant Creutzfeldt-Jakob disease is a disease of cattle caused by the ingestion of sheep brain mixed into cattle feed

Ans:)c

3. Each of the following statements concerning the rabies vaccine for use in humans is correct EXCEPT?

- a- The vaccine contains inactivated rabies virus.
- b- If your patient is bitten by a wild animal, the rabies vaccine should be given.
- c- When the vaccine is used for post-exposure prophylaxis, rabies immune globulin should also be given.
- d- The virus in the vaccine is grown in nerve tissue cell cultures, thus decreasing the risk of allergic encephalomyelitis.
- e- Pre-exposure vaccination given in three doses plus a booster dose every two years

Ans:)d???

5. Alphavirus causes which one of the following viral diseases:

- a- West Nile virus disease
- b- Western equine encephalitis
- c- St. Louis encephalitis
- d- Dengue
- e- Yellow fever

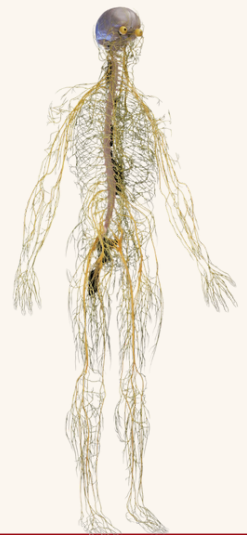
Ans:)b

7. wrong about rabies:

- a. 450mm/day !!!!

8. Which of the following is wrong about prions?

- a. Has nucleic acid



All are types of exotoxin associated with botulism EXCEPT?

- a-Type A
- b-Type B
- c-Type E
- d-Type G
- e-Tetanolysin

ans: e

Lec 3

All the following are characteristics of tetanospasmin EXCEPT?

- a- It is a heat-labile protein.
- b- It is a neurotoxin.
- c- It can be toxoided.
- d- It enhances the release of glycine and gamma-amino butyric acid
- e- It rapidly fixed to gangliosides

Ans: d

****Clostridium botulinum associated foodborne illness can occur within 18- 24 hours of ingestion of a toxin produced by the bacteria in food. Which of the following is NOT the symptom associated with C. botulinum toxin?**

- a- Poor vision
- b- Fever ✓
- c- Difficulty swallowing d- Bulbar paralysis
- e- Urinary retention

(no fever لكن بالسلايد مكتوب انه e هاي مجاوبينا)

****Clostridium tetani, one is WRONG?**

- a. Motile bacteria
- b. Has a vaccine
- c. Incubation period ranges between 3 days – 3 weeks
- d. Patient with generalized tetanus should be treated in the ward under light ✓
- e. In generalized tetanus, the patient's sensation is intact

(. لما يتعالجوا لانه اي اشي ممكن يعمل تحفيز dark and quiet room حسب ما بحثت انه لازم يكونوا ب)

****All the following are the preventive measures for Tetanus**

EXCEPT:

- a-Active immunization of toxoids.
- b-Prophylactic use of antitoxin.
- c-Administration of Bacitracin. ✓
- d-Vaccine Boosters every 10 years.
- e-Caring of unhealed umbilical stump.

****case: infant with changed in cry , his mom feeding him with hony :**

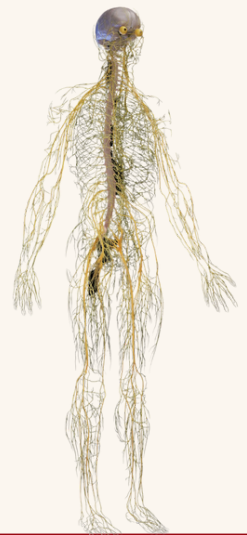
a.boutelinum

****Botulinism : inhibit the Ach release**

****About the characters of .c.tetani:**

True : grow on meat broth media

False : it's non motile



Lec 4

****The following are true about leprosy EXCEPT?**

- a-It is caused by acid fast bacteria.
- b-It causes facial nerve palsy.
- c-Tuberculoid leprosy occurs in patients with poor cellular immunity.
- d-More bacilli are found in the skin of patients with lepromatous leprosy than tuberculoid leprosy.
- e-granuloma is a feature of tuberculoid leprosy.

ans: c

**** Mycobacterium leprae, one is TRUE?**

- a. Gram negative bacteria
- b. Acid fast bacilli
- c. Extracellular bacteria
- d. Causes beta hemolysis on blood agar

Ans: b

****All the given are the distinguishing characteristics of leprosy disease EXCEPT:**

- a.Only few from who exposed to infection develop the disease
- b.People are no longer infectious
- c.the exit routes are the skin
- d. the most likely entry is upper respiratory tract
- e.affected females more than males

ans: e

****after 48 hrs of Injection by Lepromin test intradermally , the size of nodule to approve the Positive reaction is :**

- a. 10 mm
- b. 5mm
- c. 0.5 mm
- d. 1mm
- e. 0.1mm

ans:a

