

Connective Tissue



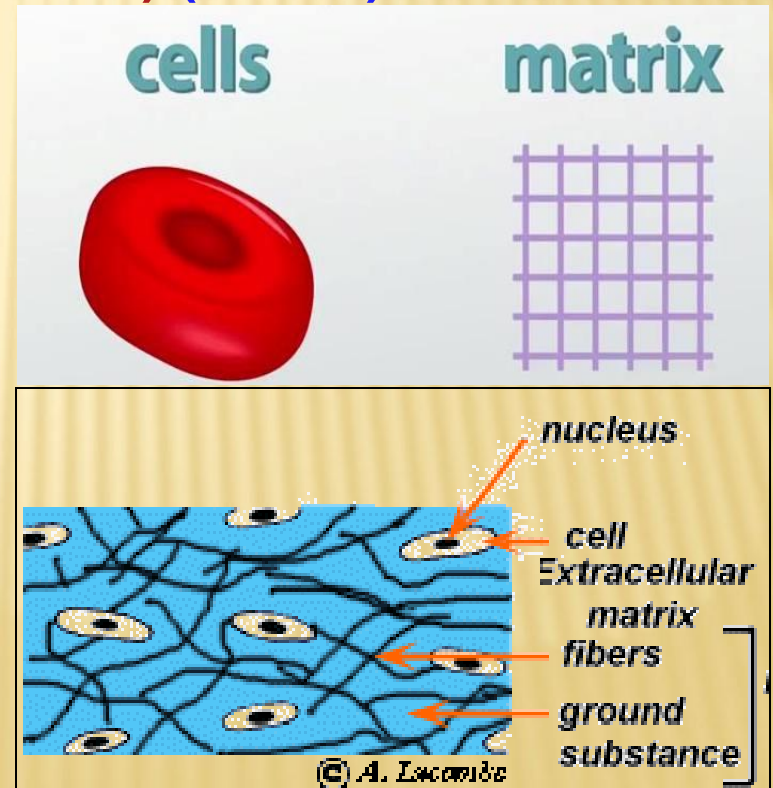
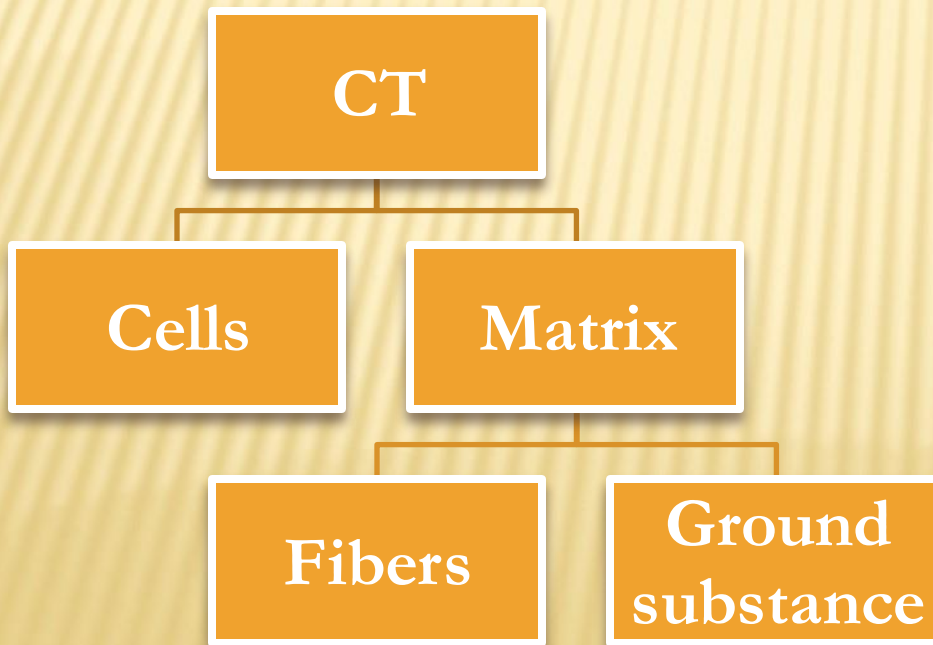
By

DR. HEBA HASSAN

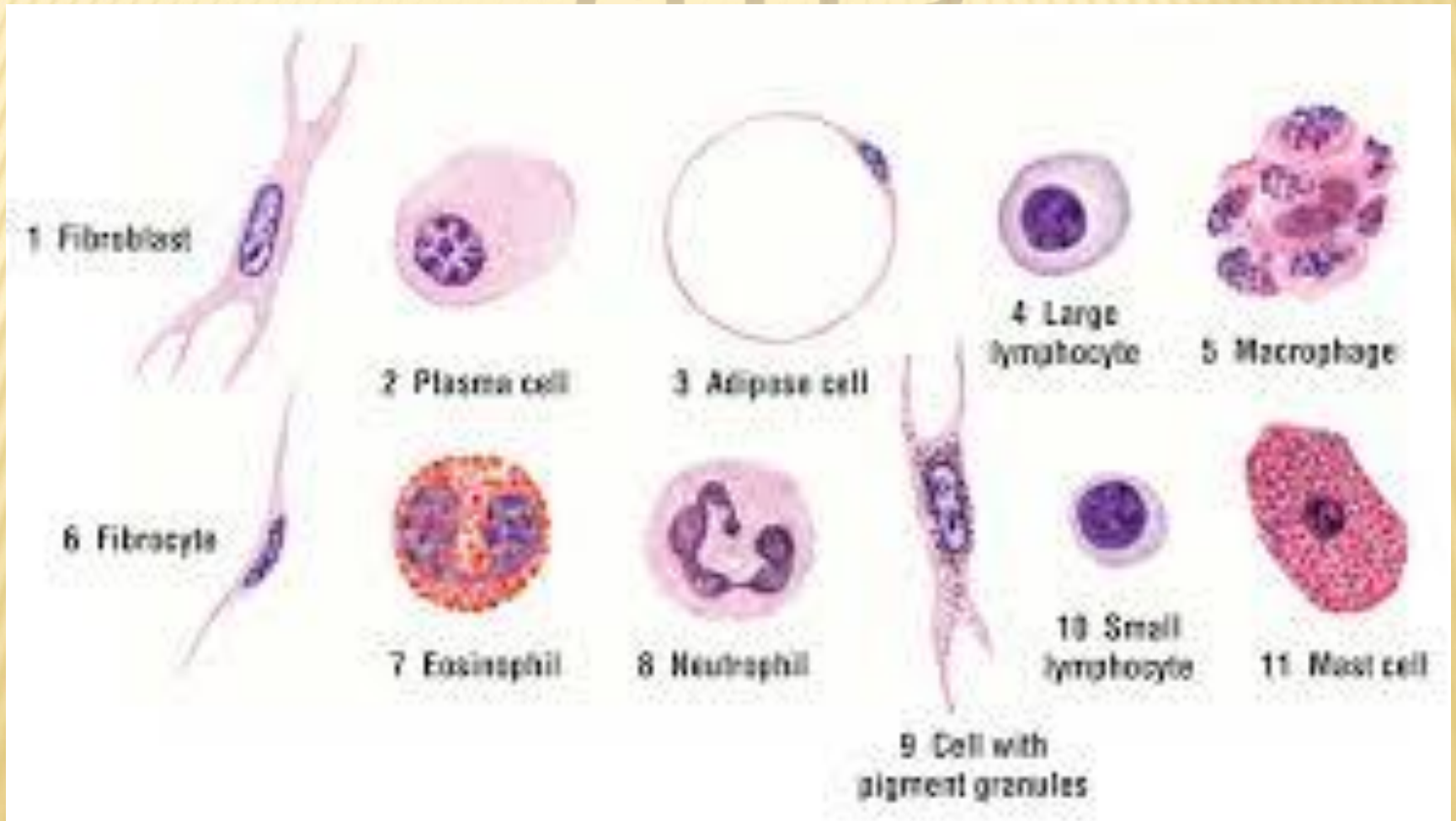
Structure of C.T.

a - Connective tissue cells (less.)

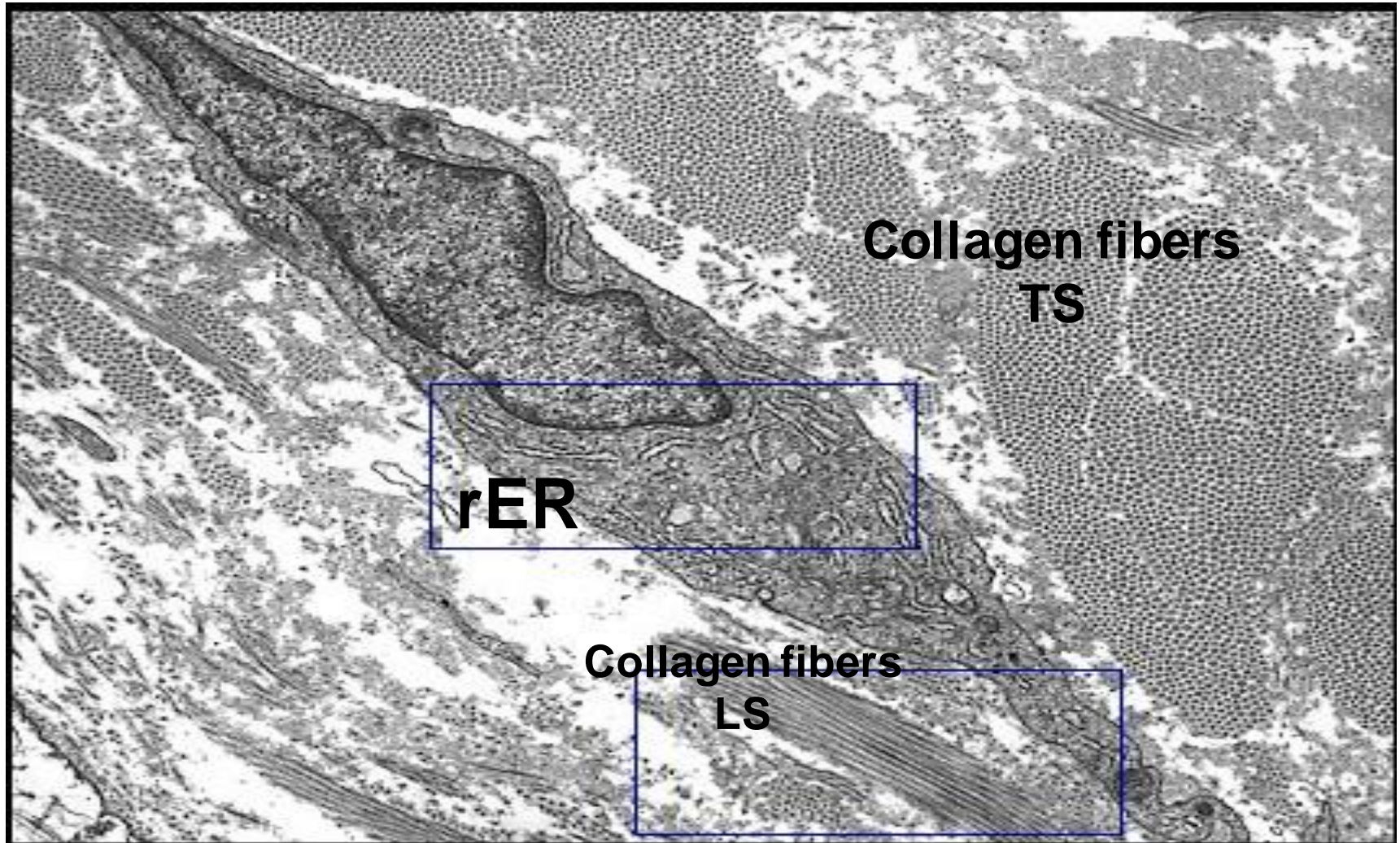
b - Intercellular substance (Matrix) (More).



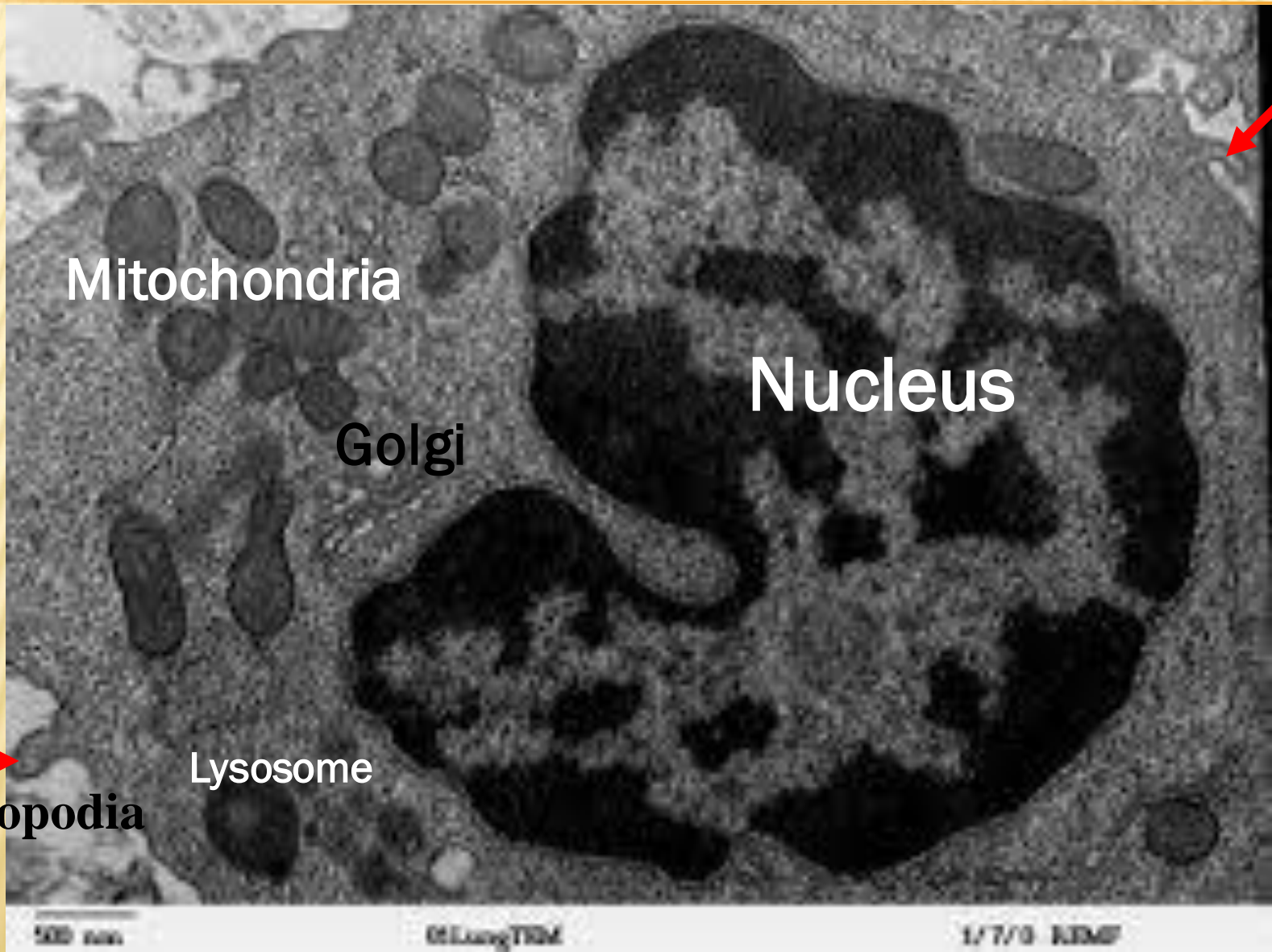
CONNECTIVE TISSUE CELLS



EM of Fibroblast and collagen fibers



EM PICTURE OF MACROPHAGE



Mitochondria

Golgi

Nucleus

Lysosome

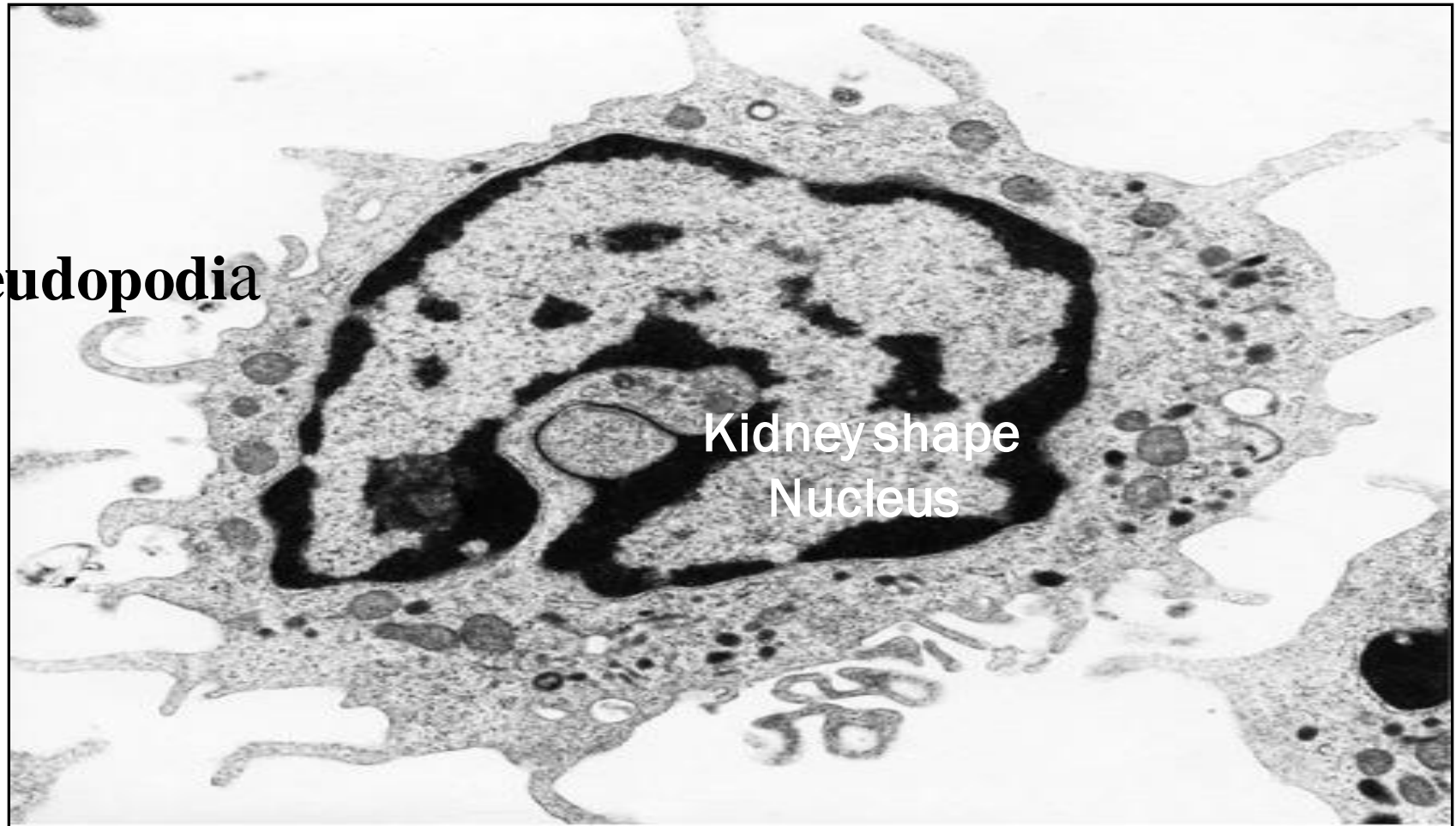
pseudopodia

500 nm

G.Liang/TDM

1/7/0 NEMF

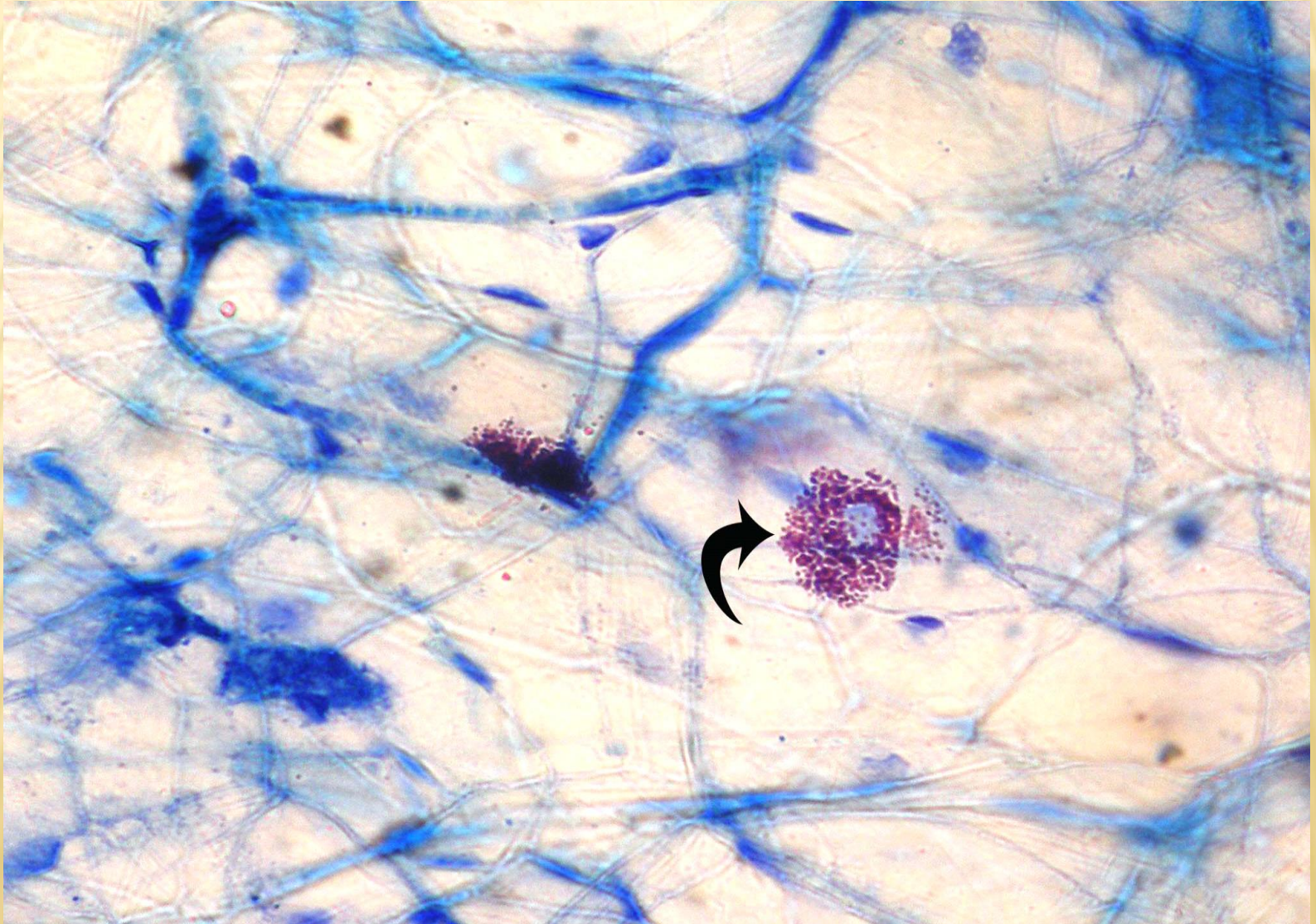
Macrophage)M.E)



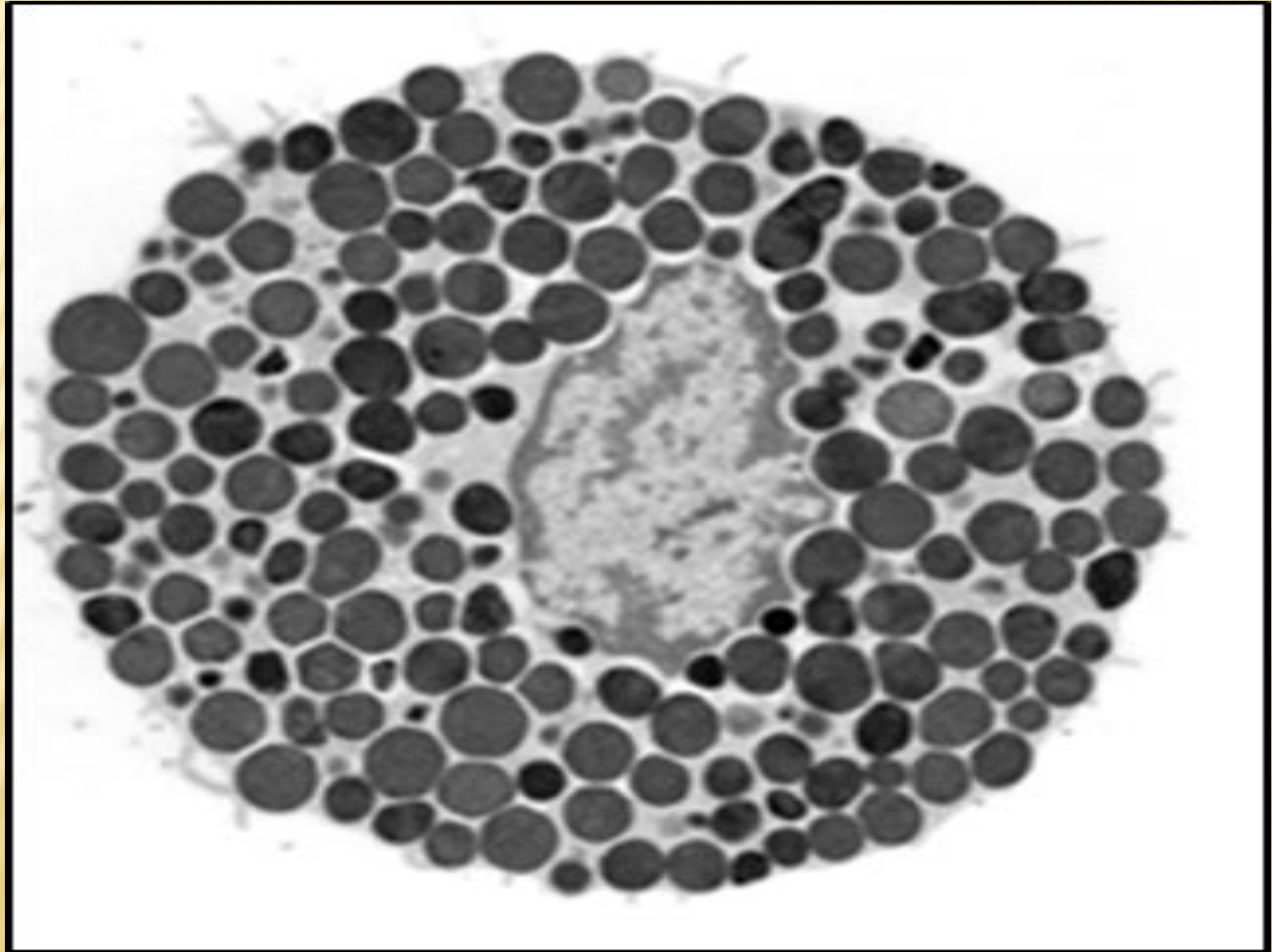
Source: Lichtman MA, Shafer MS, Felgar RE, Wang N:
Lichtman's Atlas of Hematology: <http://www.accessmedicine.com>
Copyright © The McGraw-Hill Companies, Inc. All rights reserved.

MAST CELL STAINED WITH TOLUIDINE BLUE

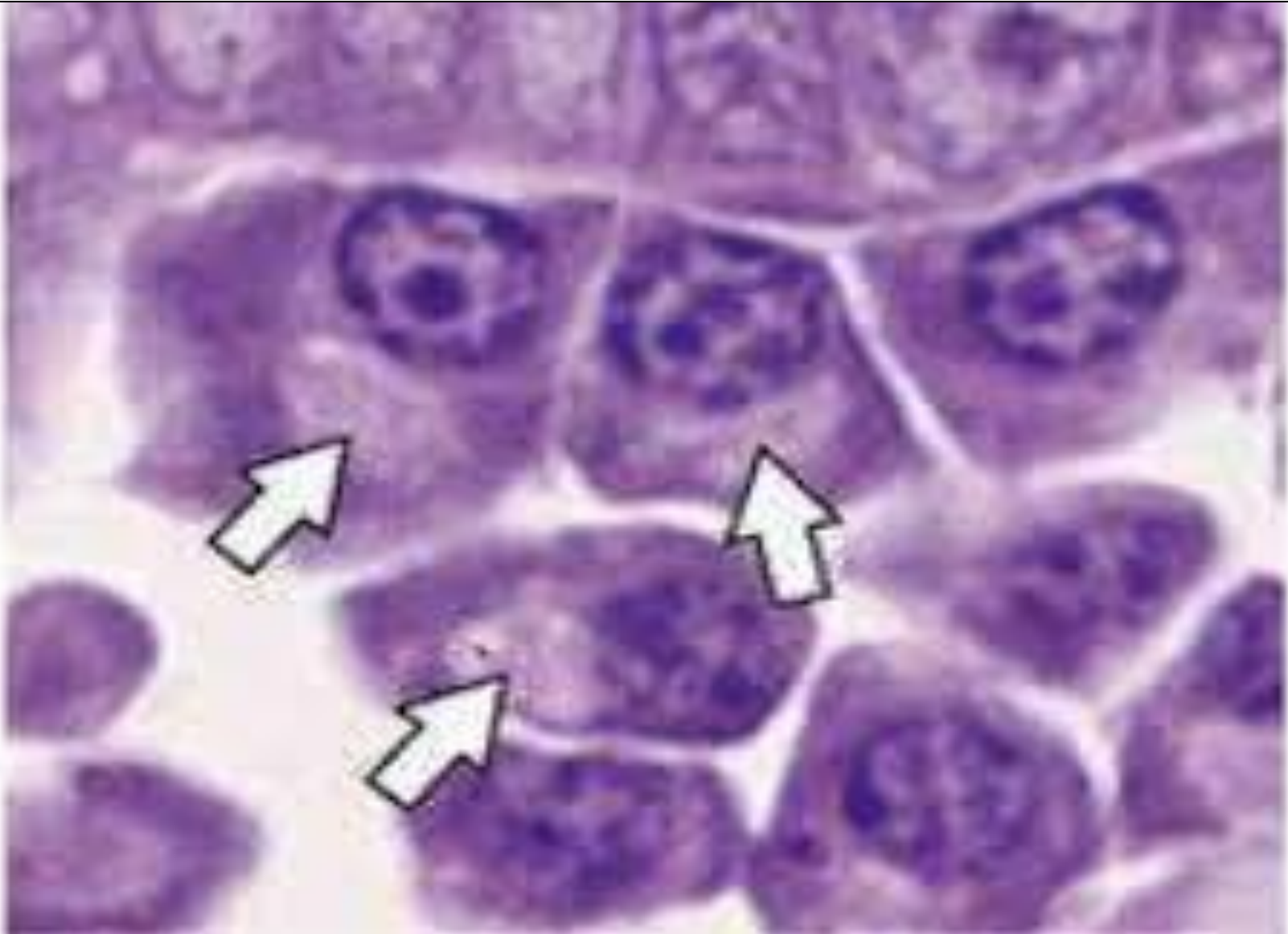
The granules are metachromatic stained red with toluidine blue



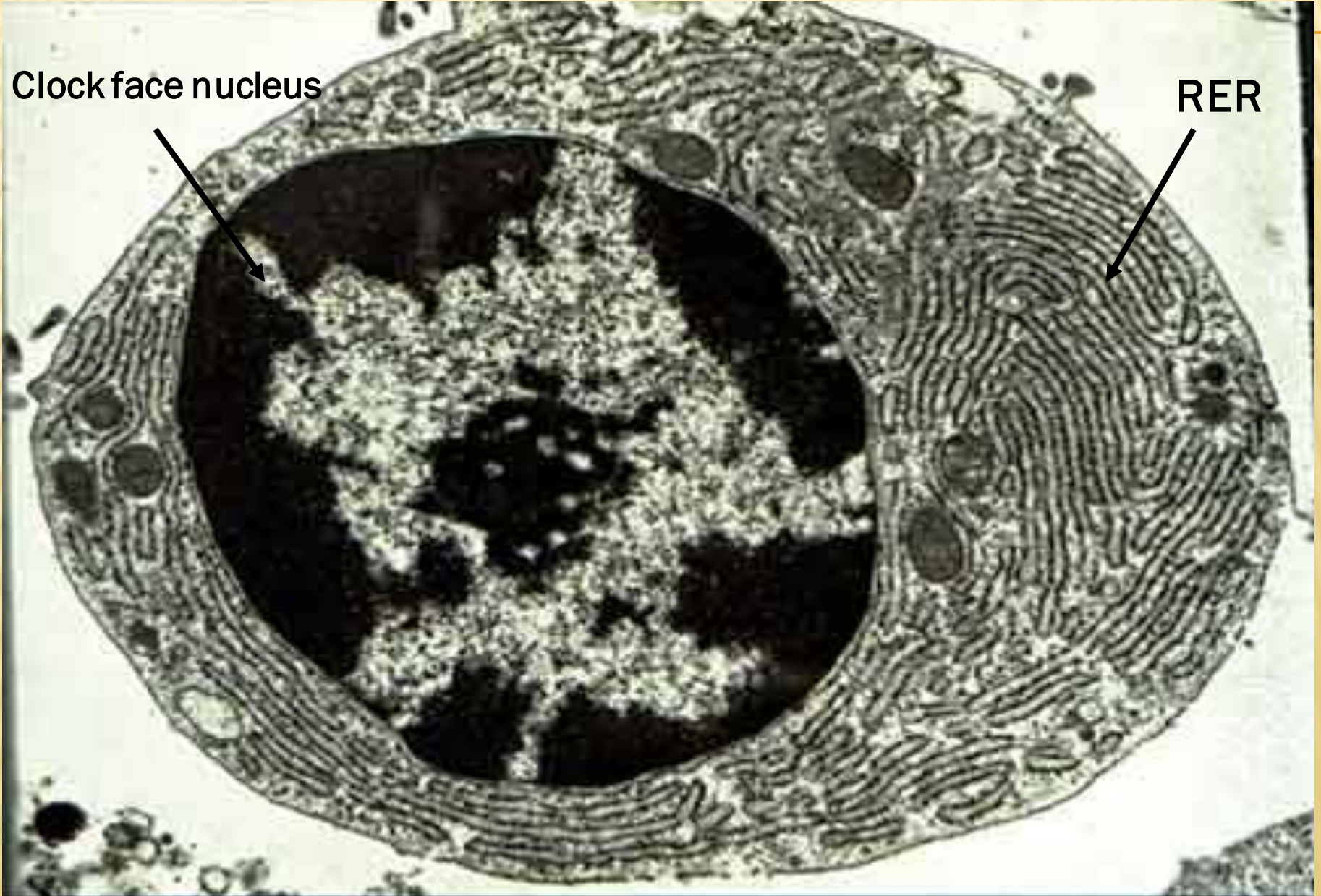
EM PICTURE OF MAST CELL



Plasma cell (Negative Golgi image)



EM PICTURE OF PLASMA CELL



CLASSIFICATION OF C.T.

```
graph TD; A[CLASSIFICATION OF C.T.] --> B[C.T. proper]; A --> C[Specialized C.T.]; A --> D[Supporting C.T.]; B --> B1[Loose C.T.]; B --> B2[Dense C.T.]; C --> C1[Adipose]; C --> C2[Reticular]; C --> C3[Mucous]; C --> C4[Hemopoietic tissue]; D --> D1[Bone]; D --> D2[Cartilage];
```

C.T. proper

- Loose C.T.
- Dense C.T

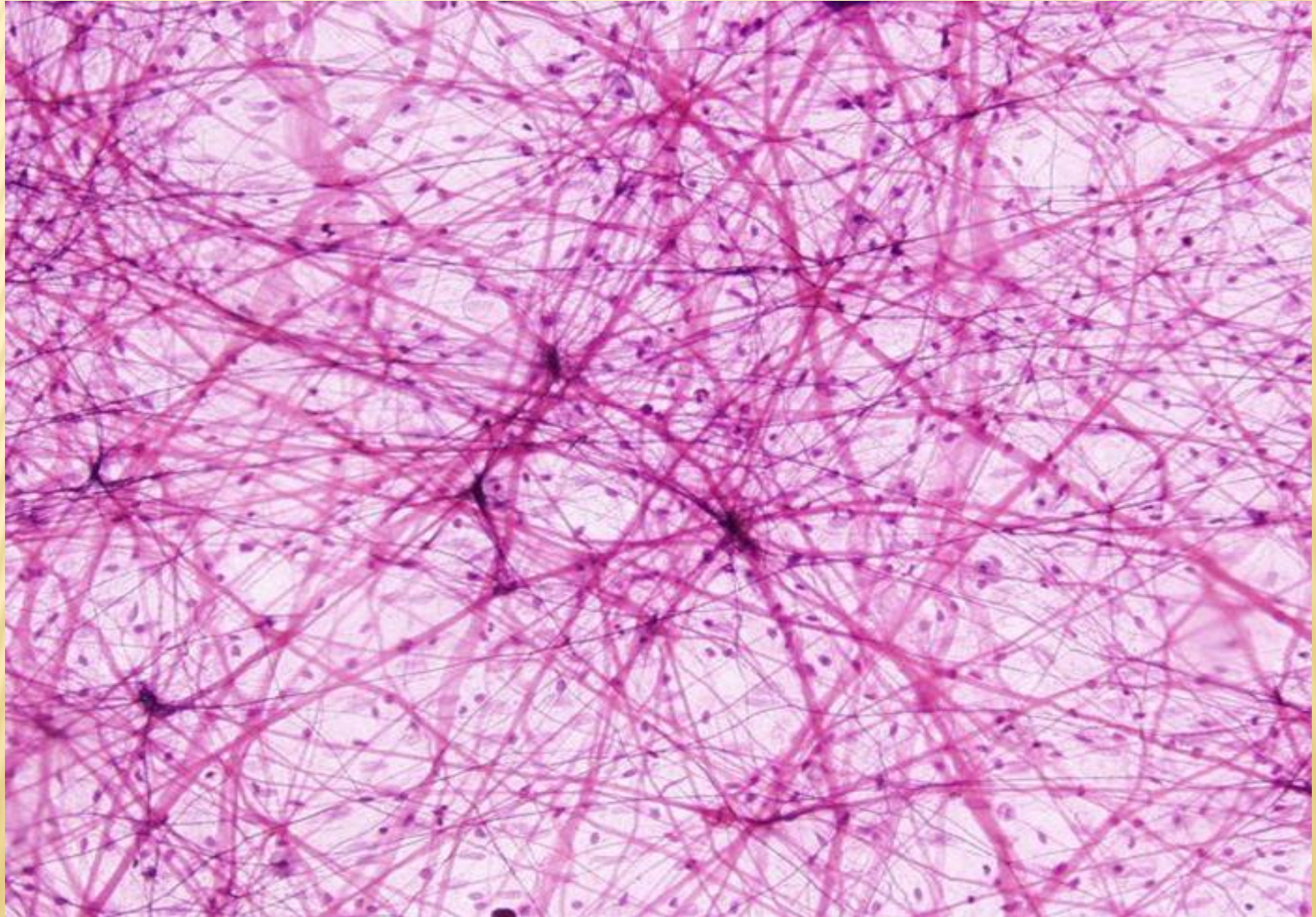
Specialized C.T.

- Adipose
- Reticular
- Mucous
- Hemopoietic tissue

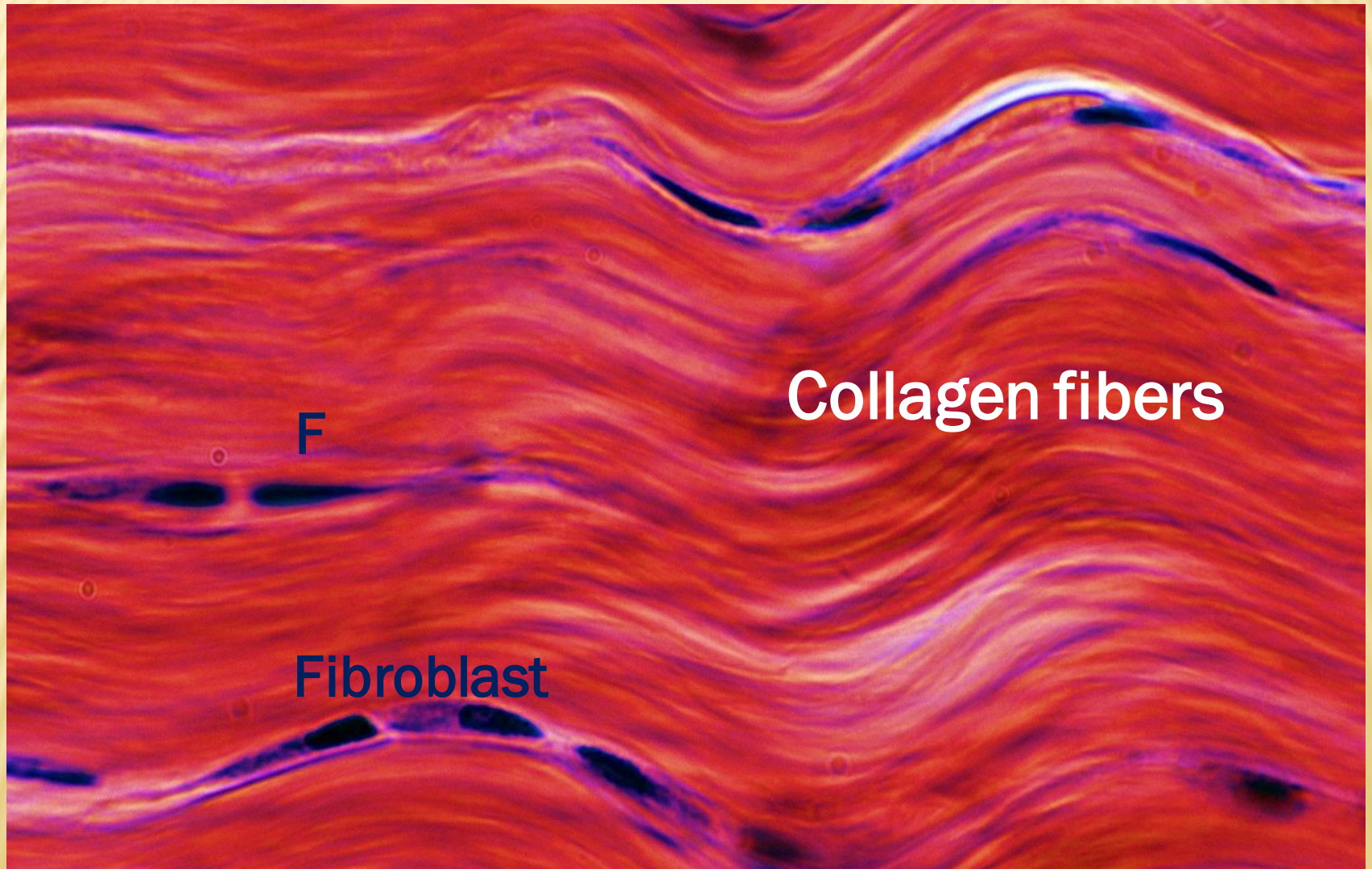
Supporting C.T.

- Bone
- Cartilage

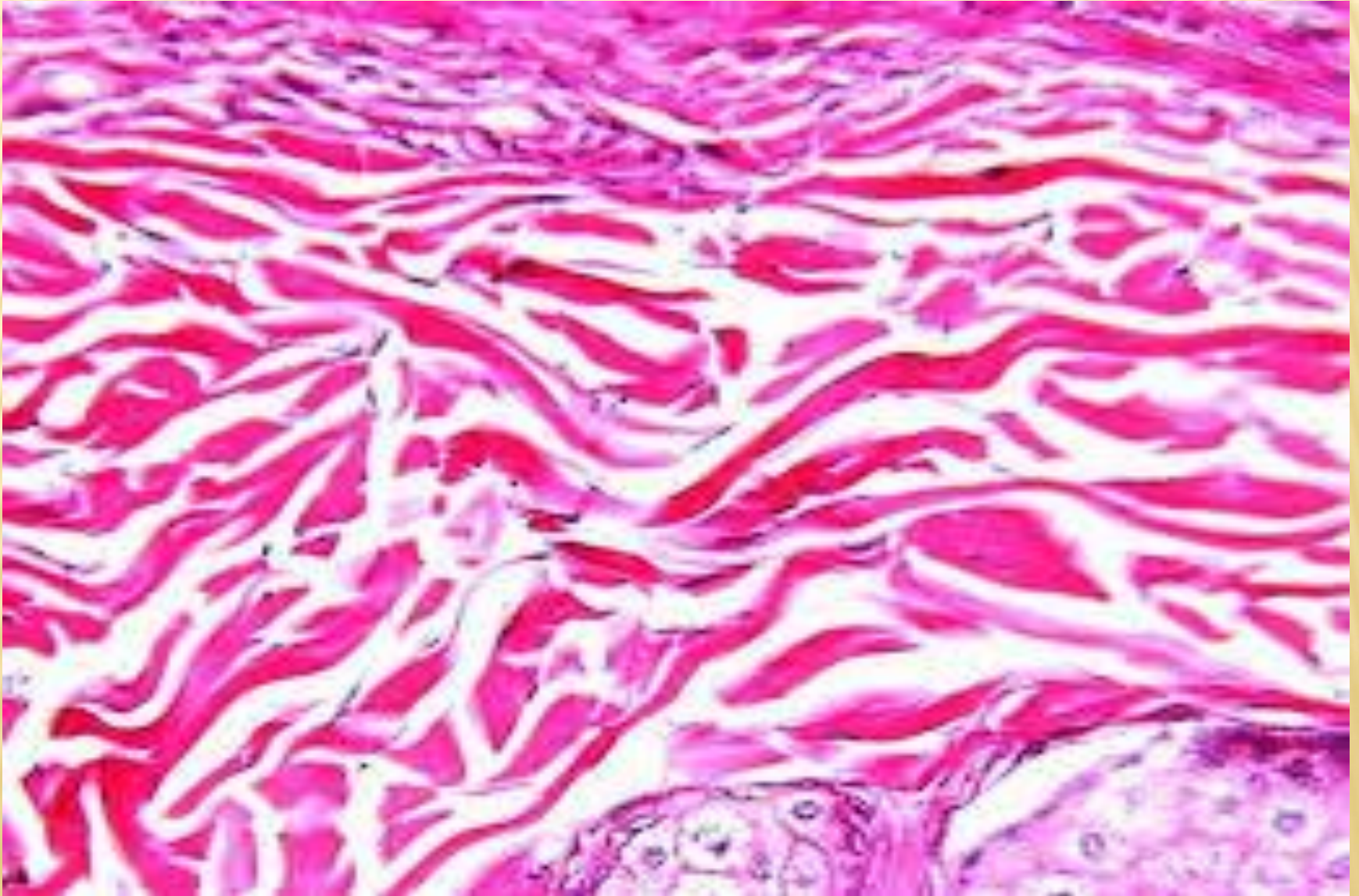
LOOSE C.T



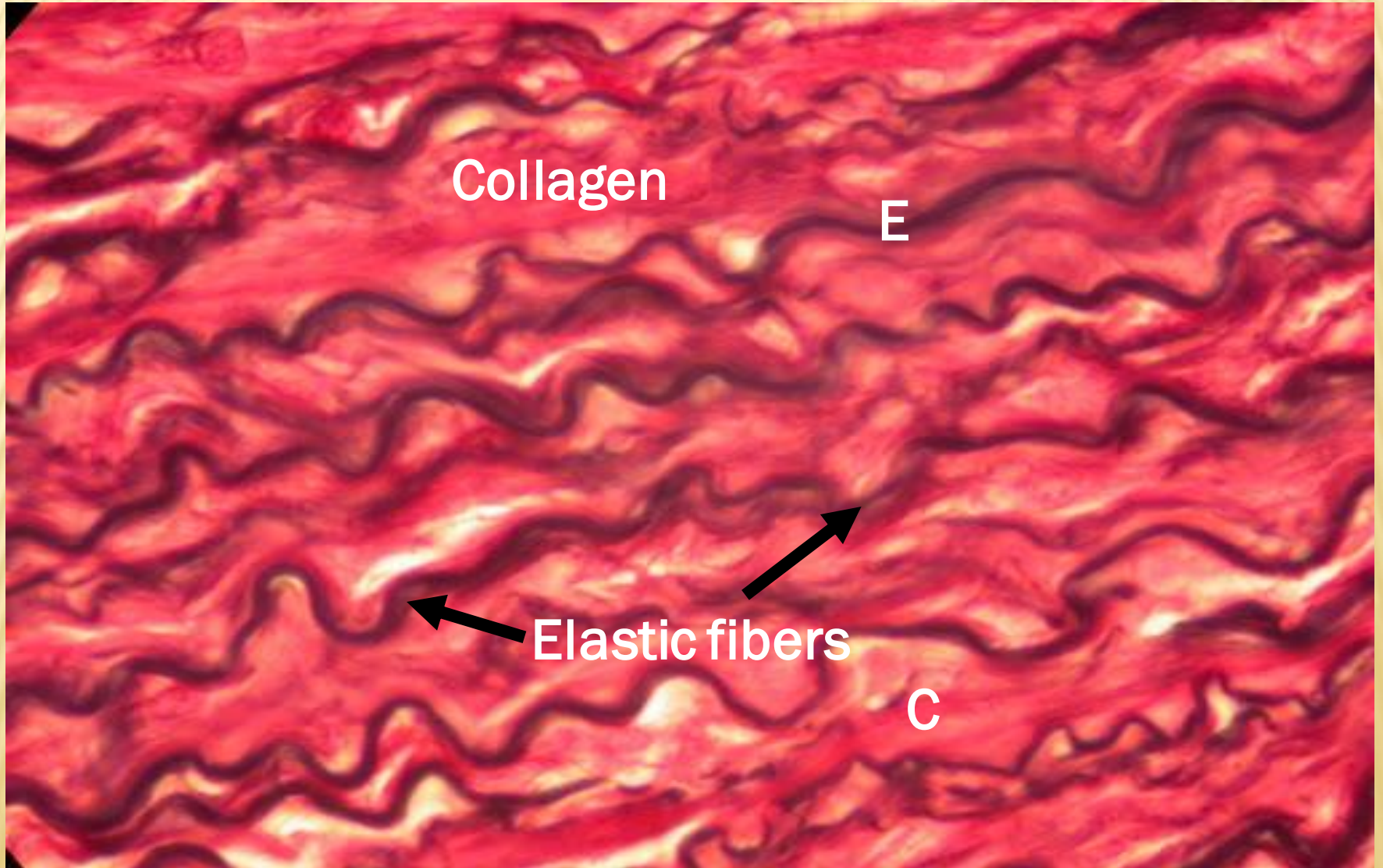
DENSE REGULAR C.T



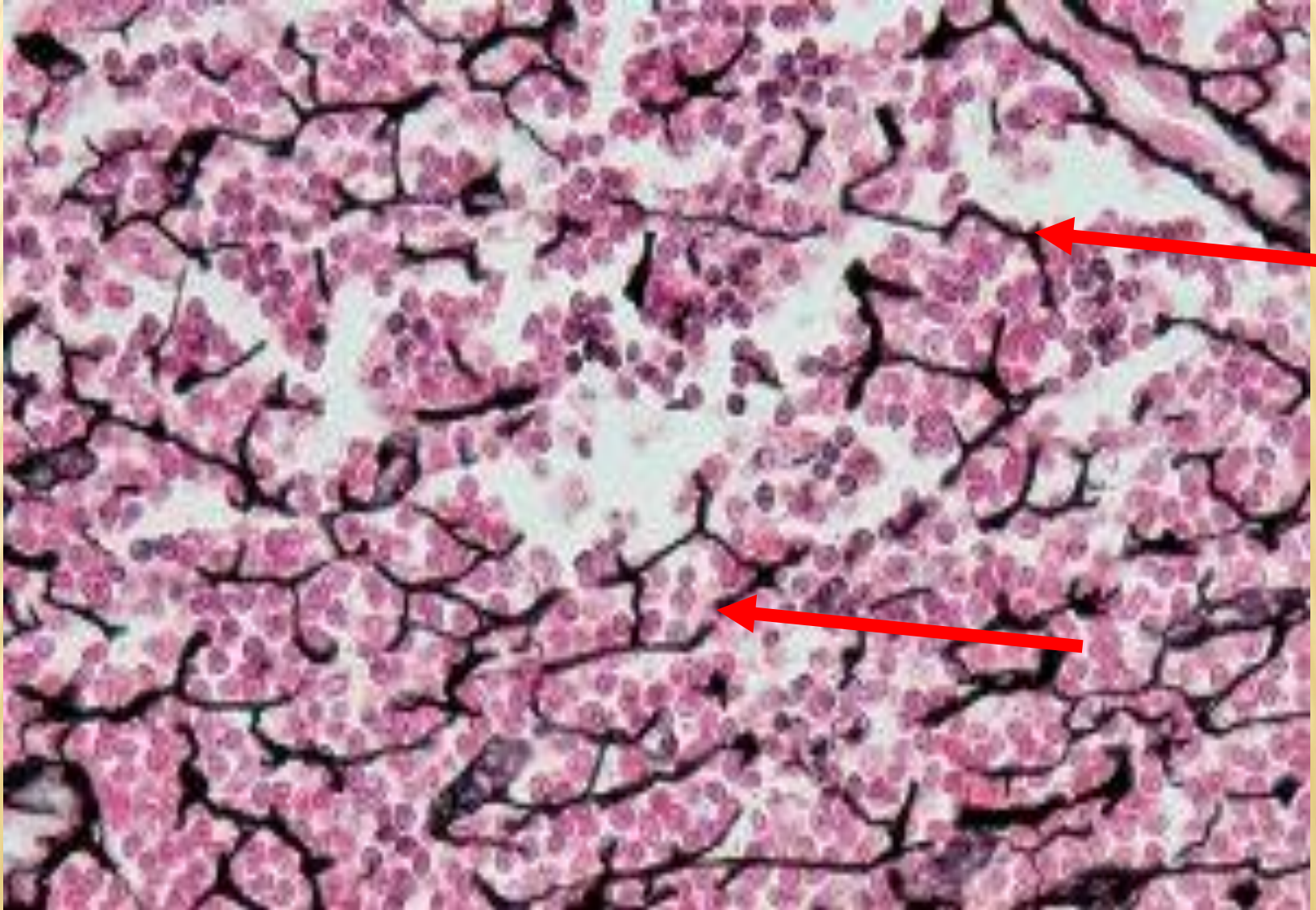
DENSE IRREGULAR C.T



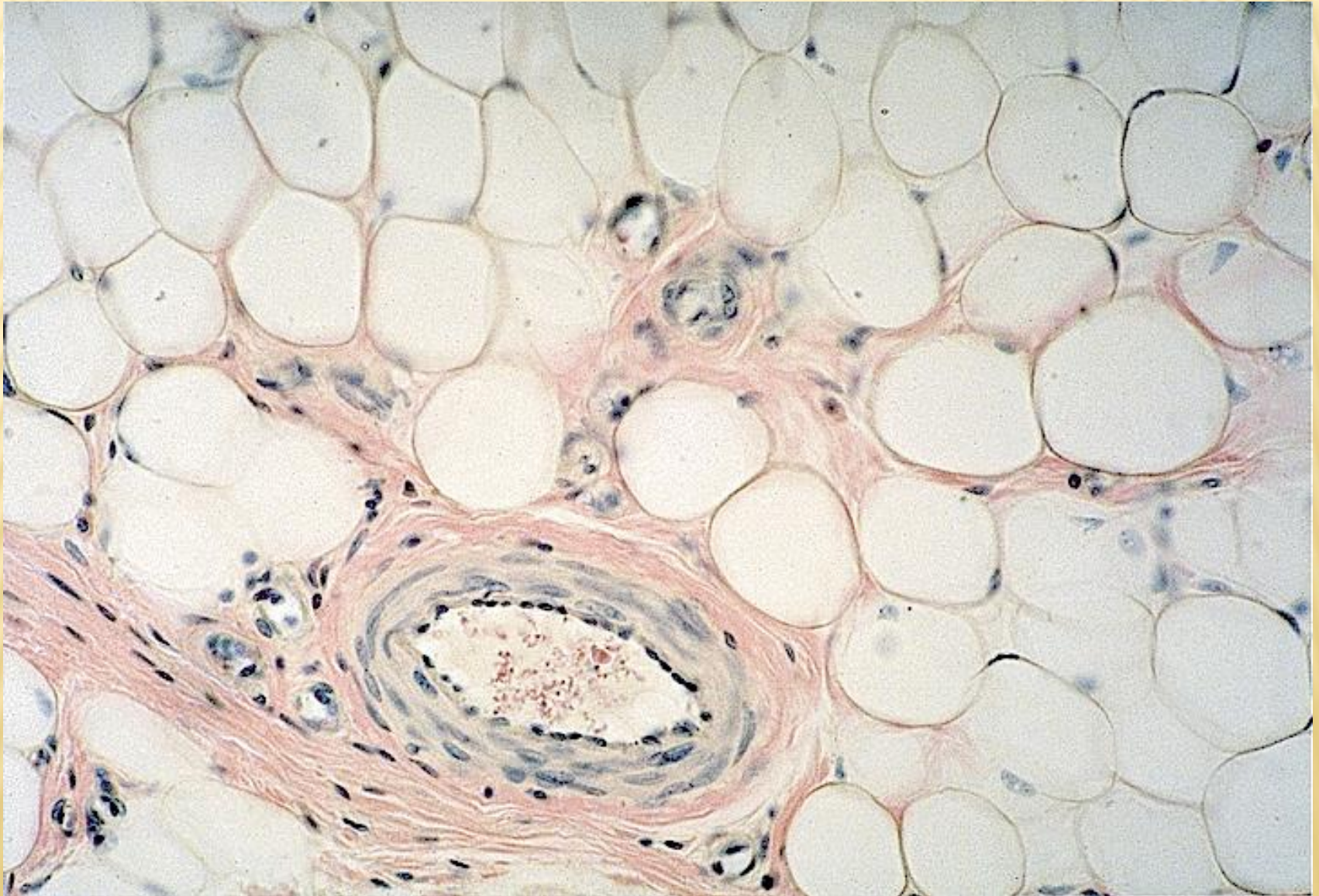
ELASTIC C.T



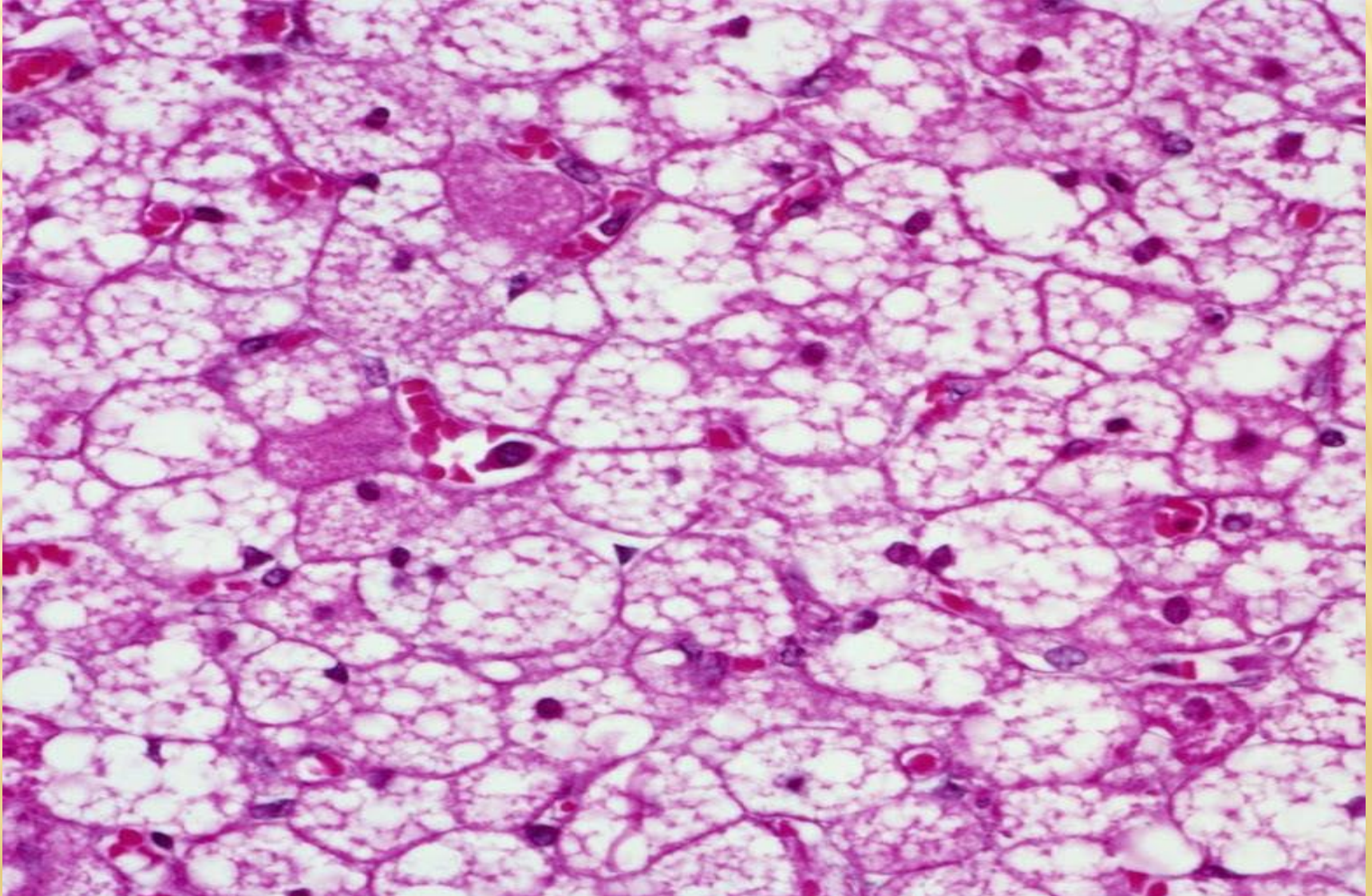
RETICULAR C.T (STAINED BLACK WITH SILVER STAIN)

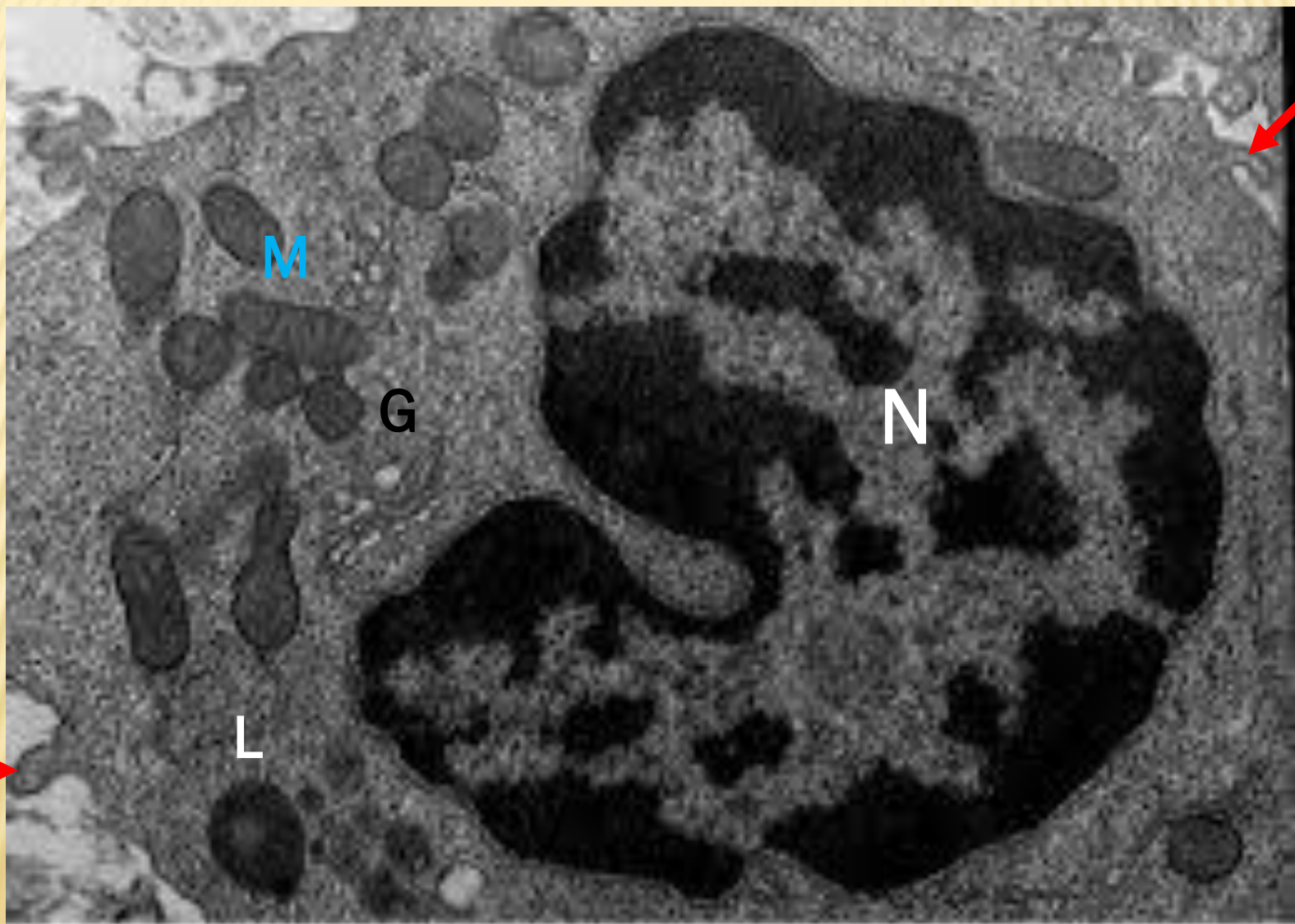


UNILOCULAR ADIPOSE TISSUE:



MULTILOCULAR (BROWN) ADIPOSE TISSUE

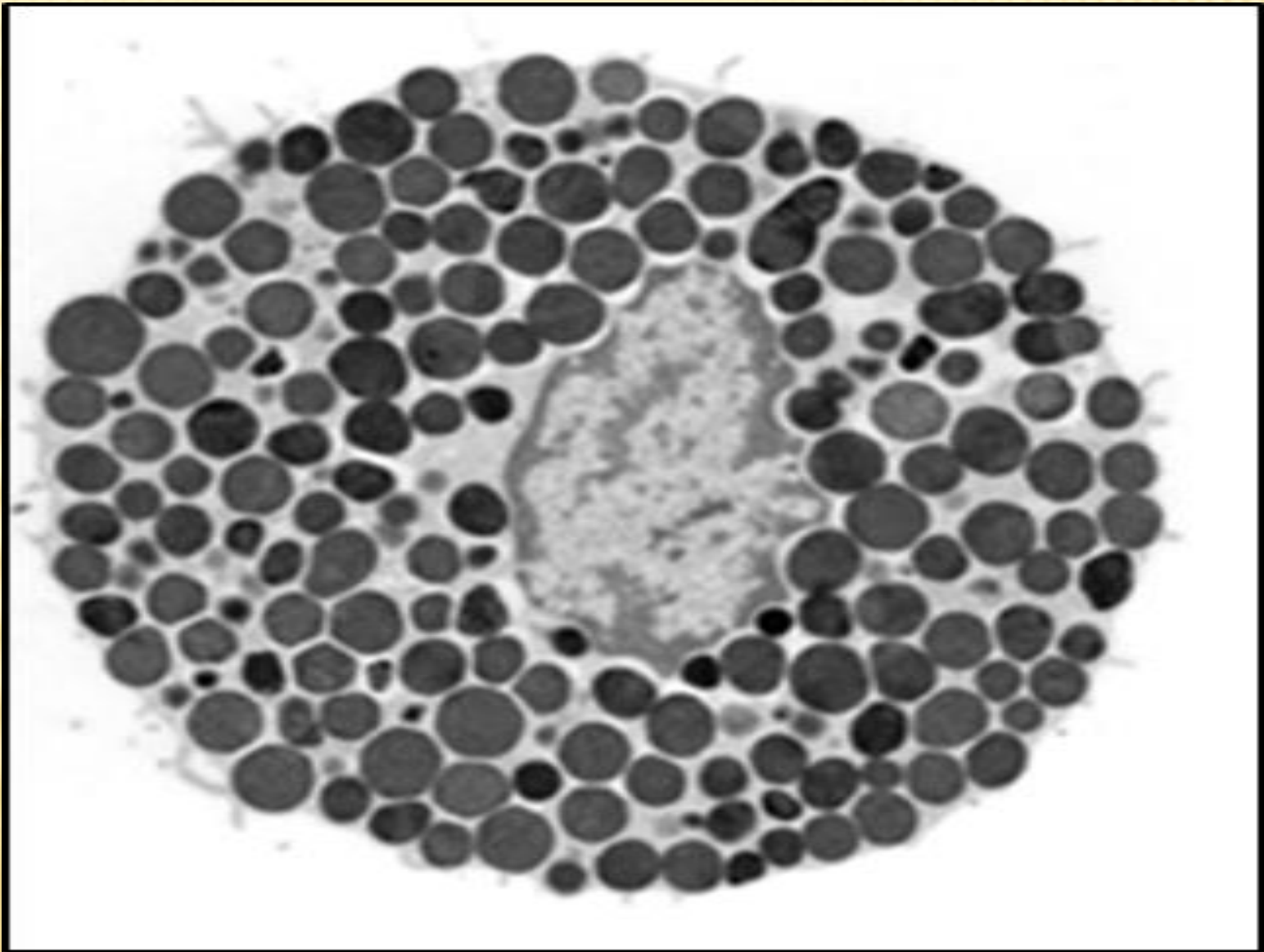


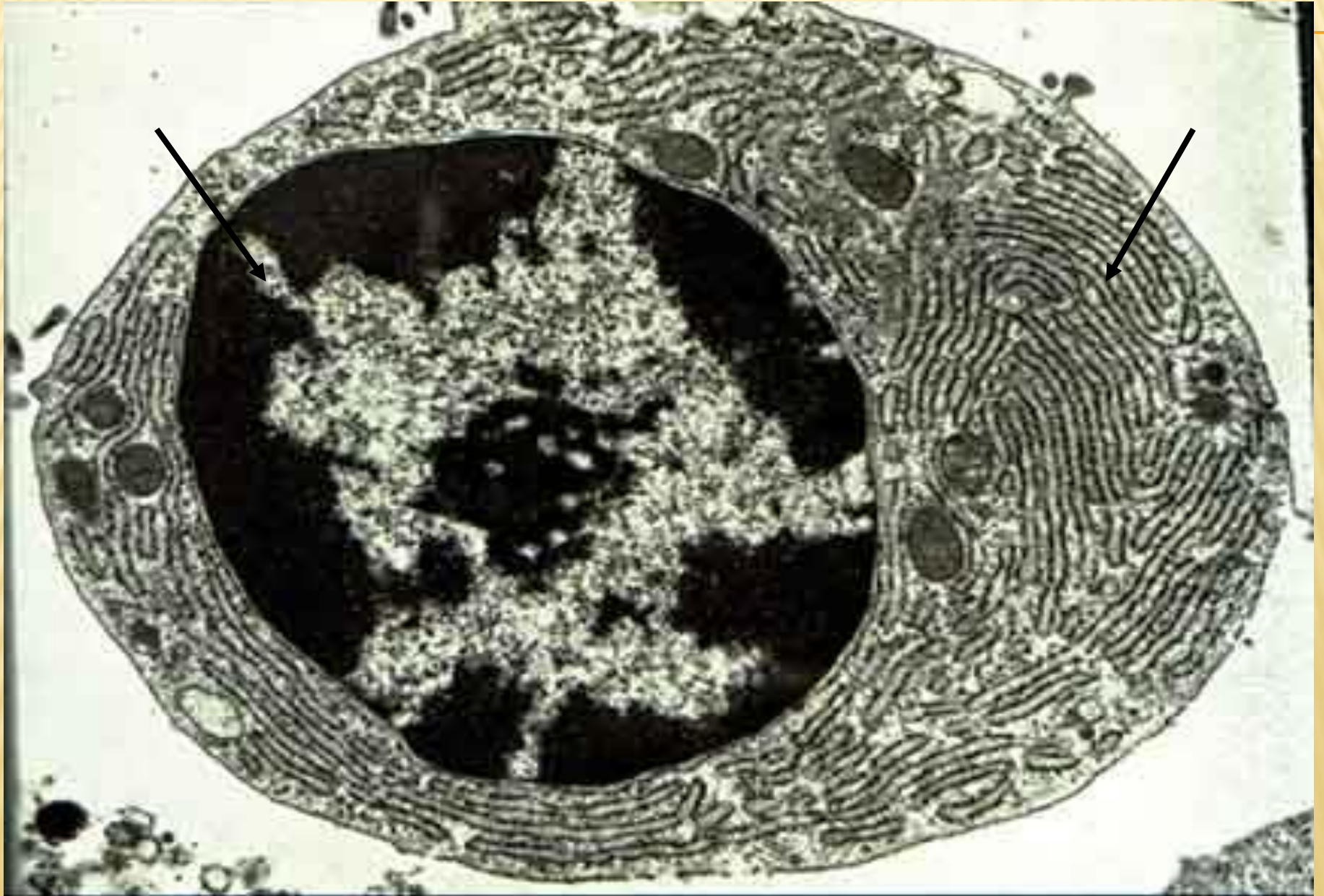


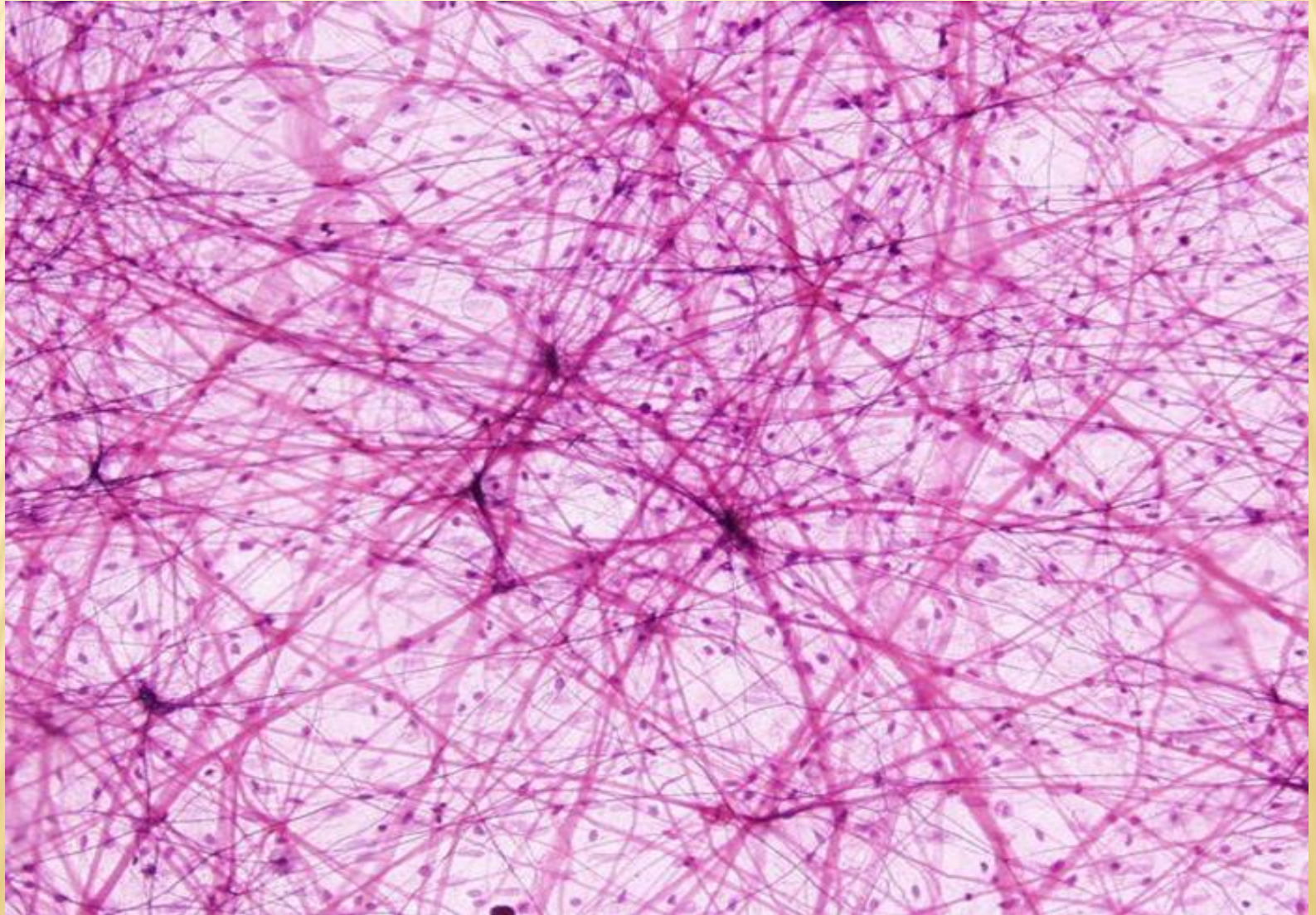
500 nm

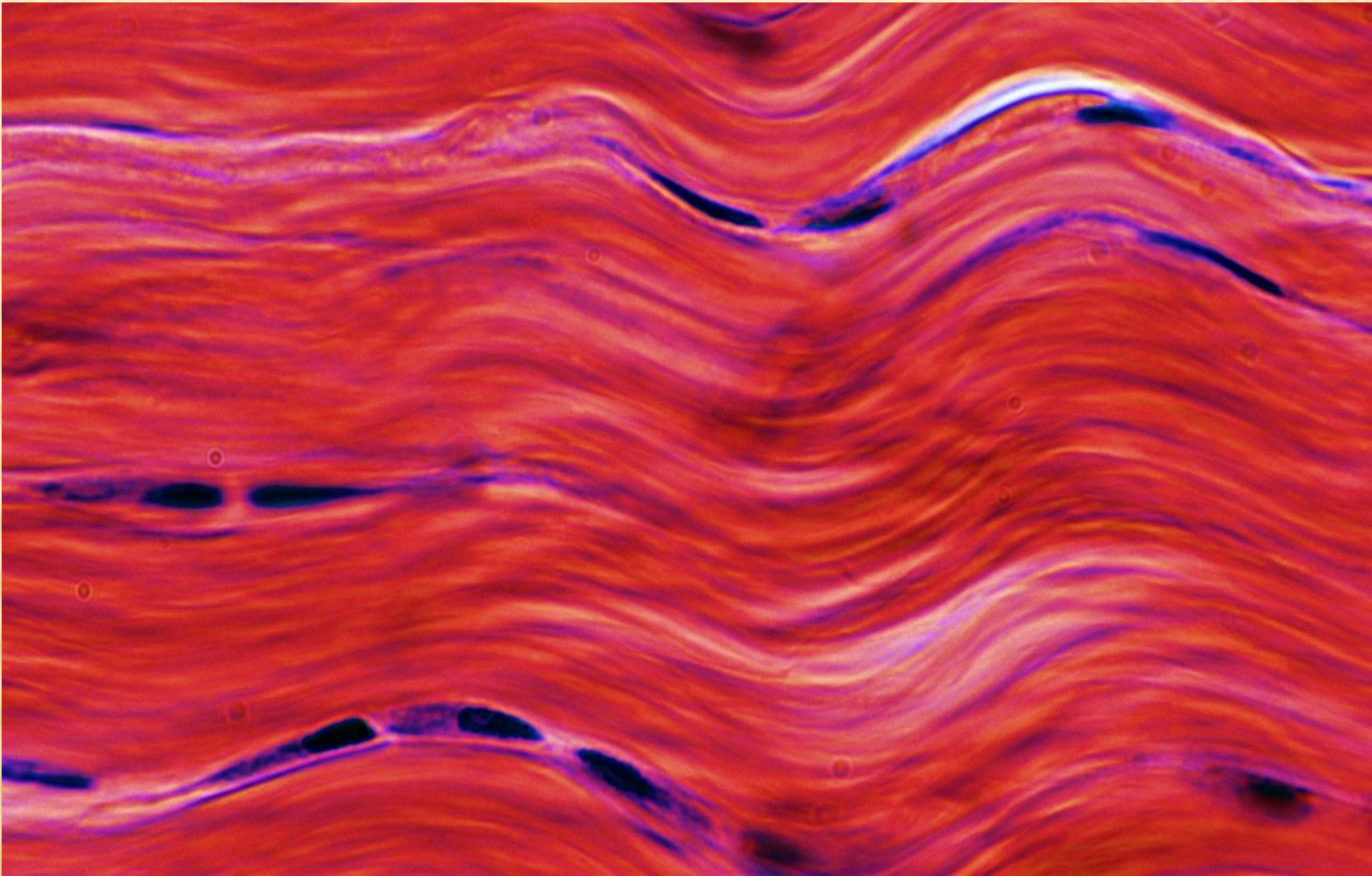
CellangTBM

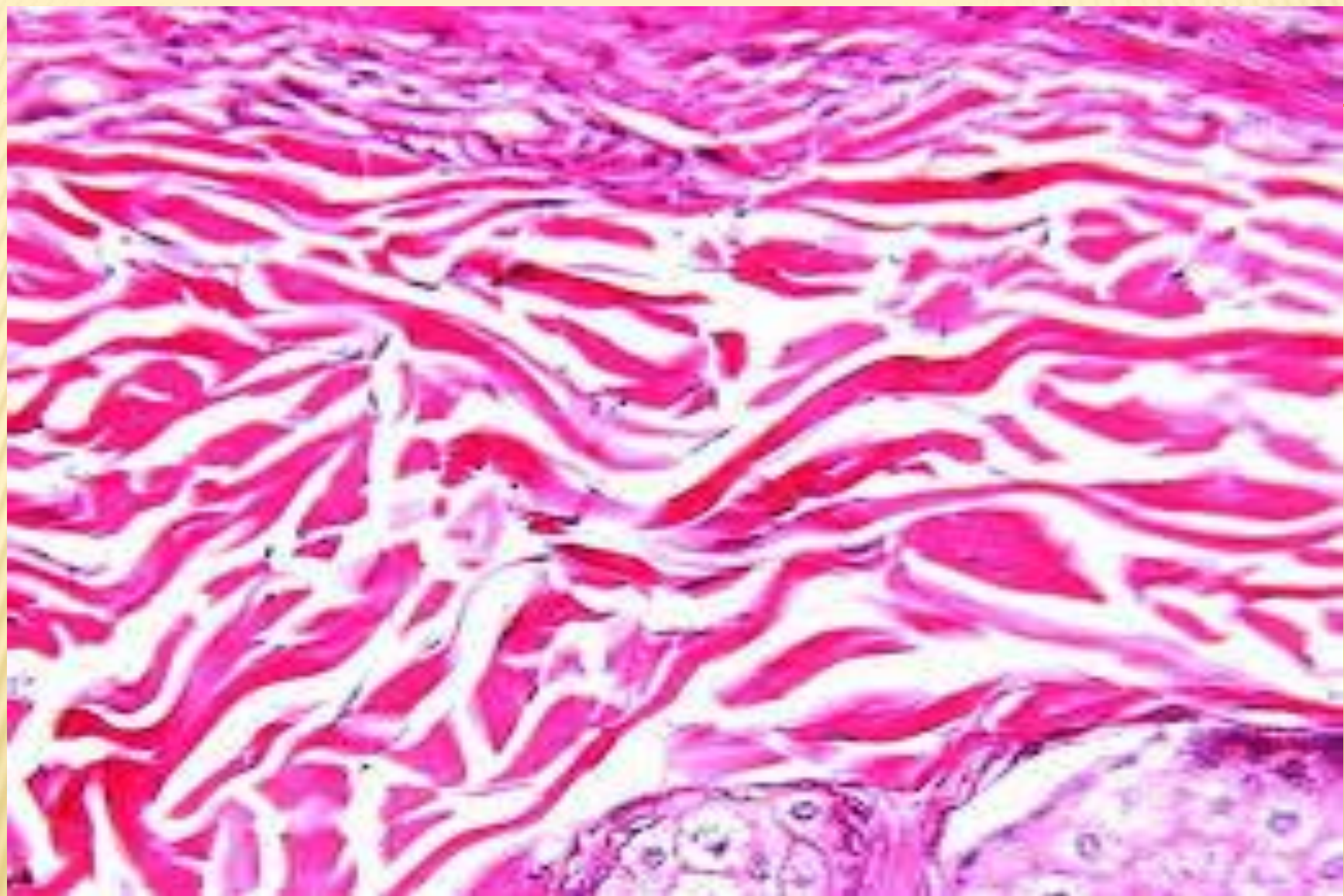
1/7/0 NEMF

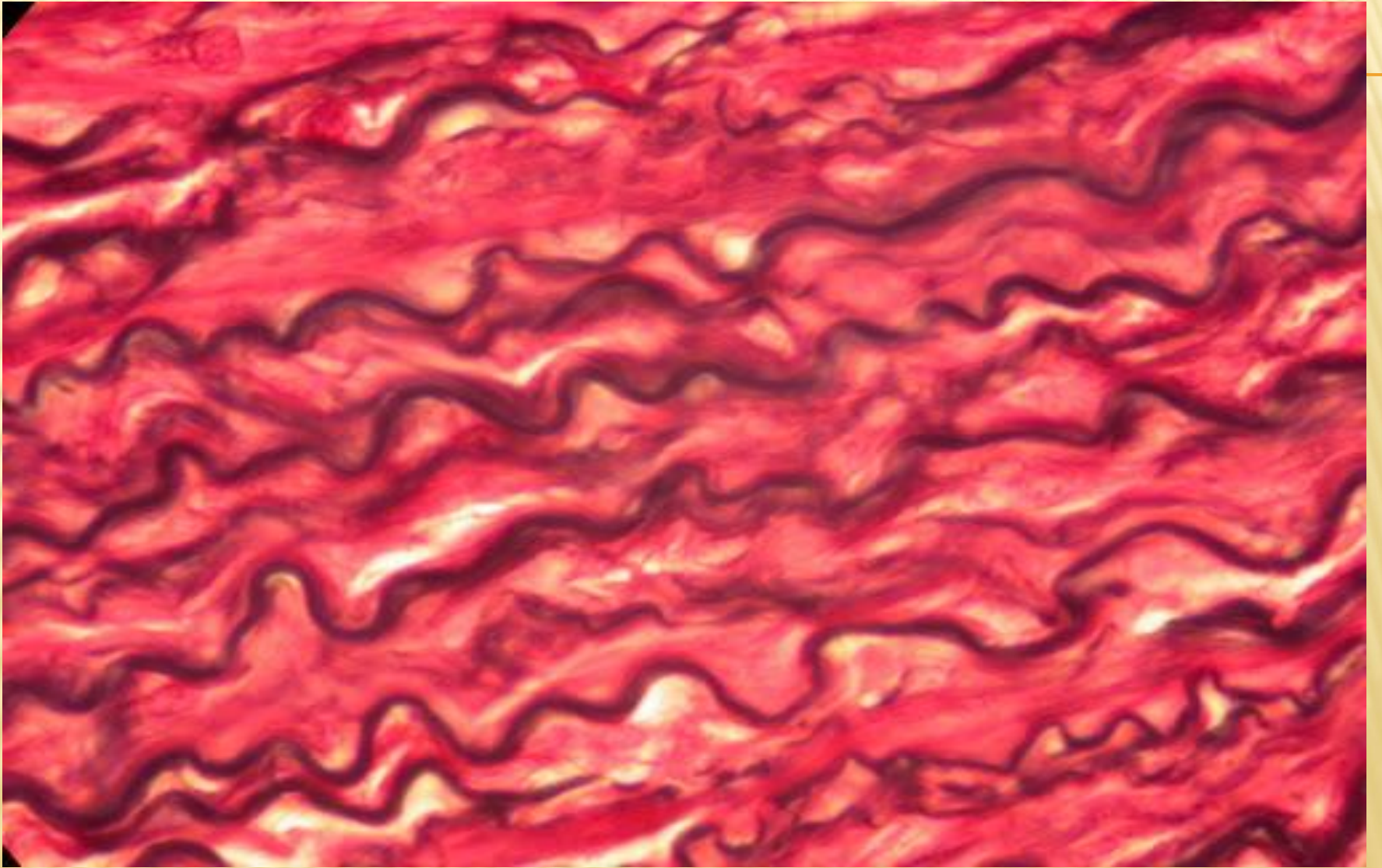


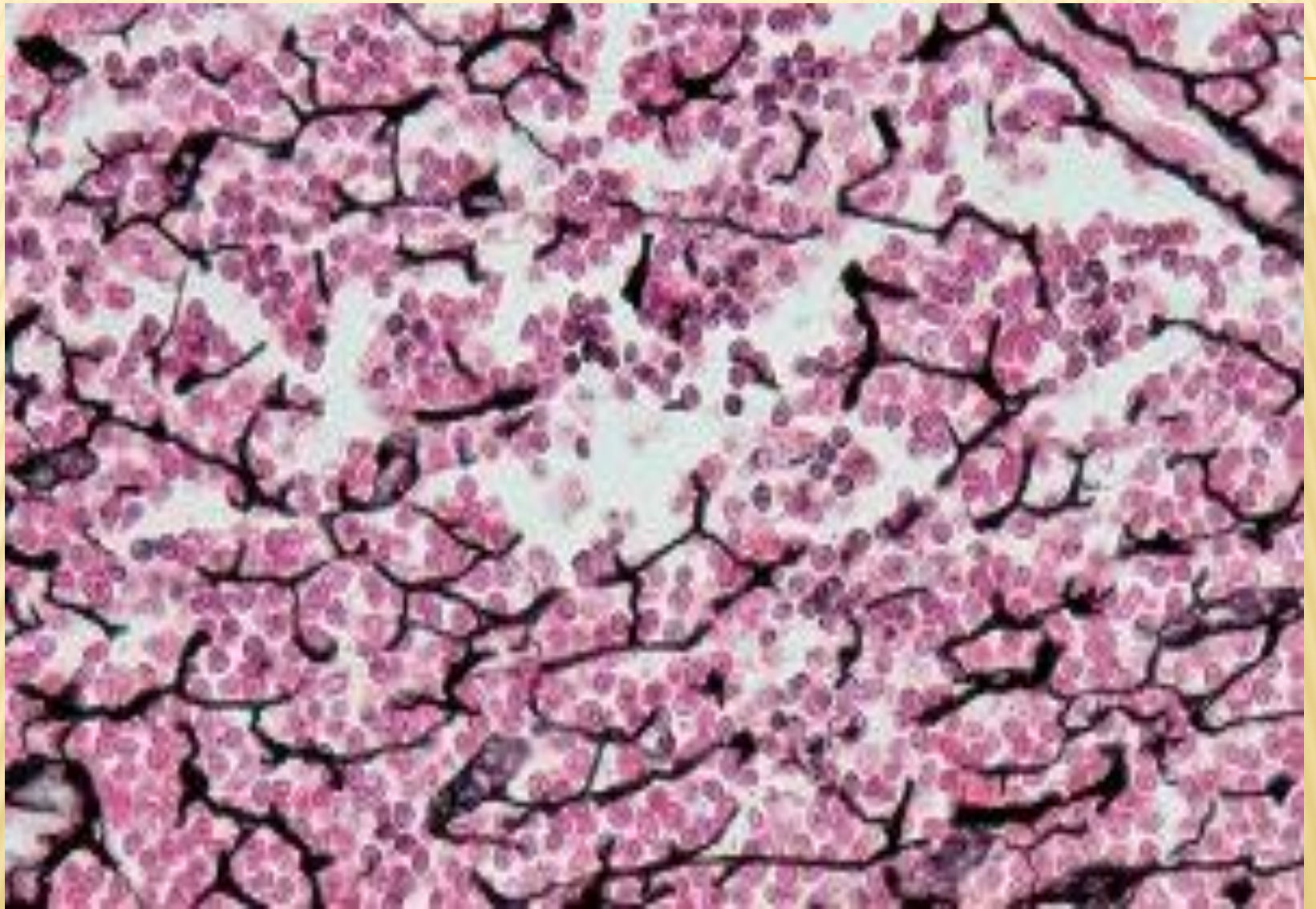




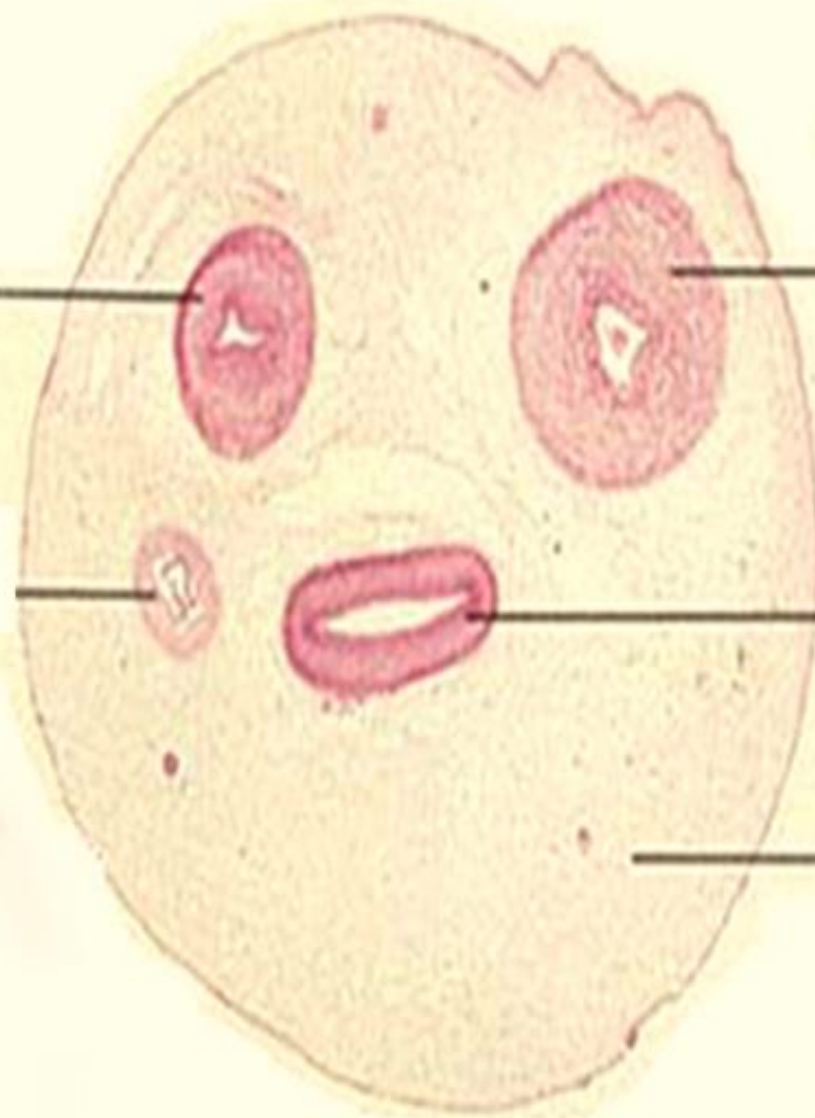








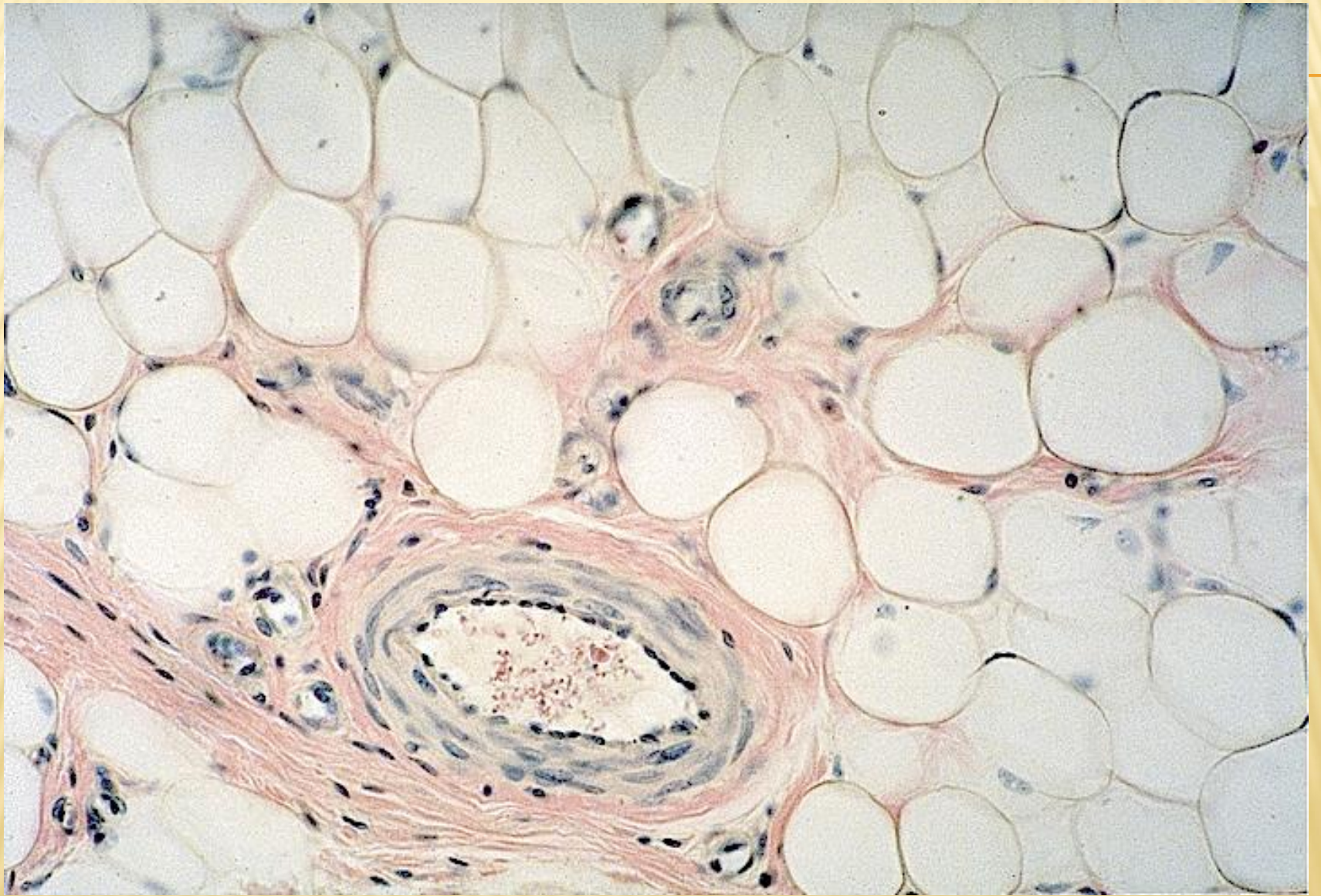
Umbilical artery



Umbilical artery

Umbilical vein

mucoid CT



**THANK
YOU**