

# **GIT practical slides**

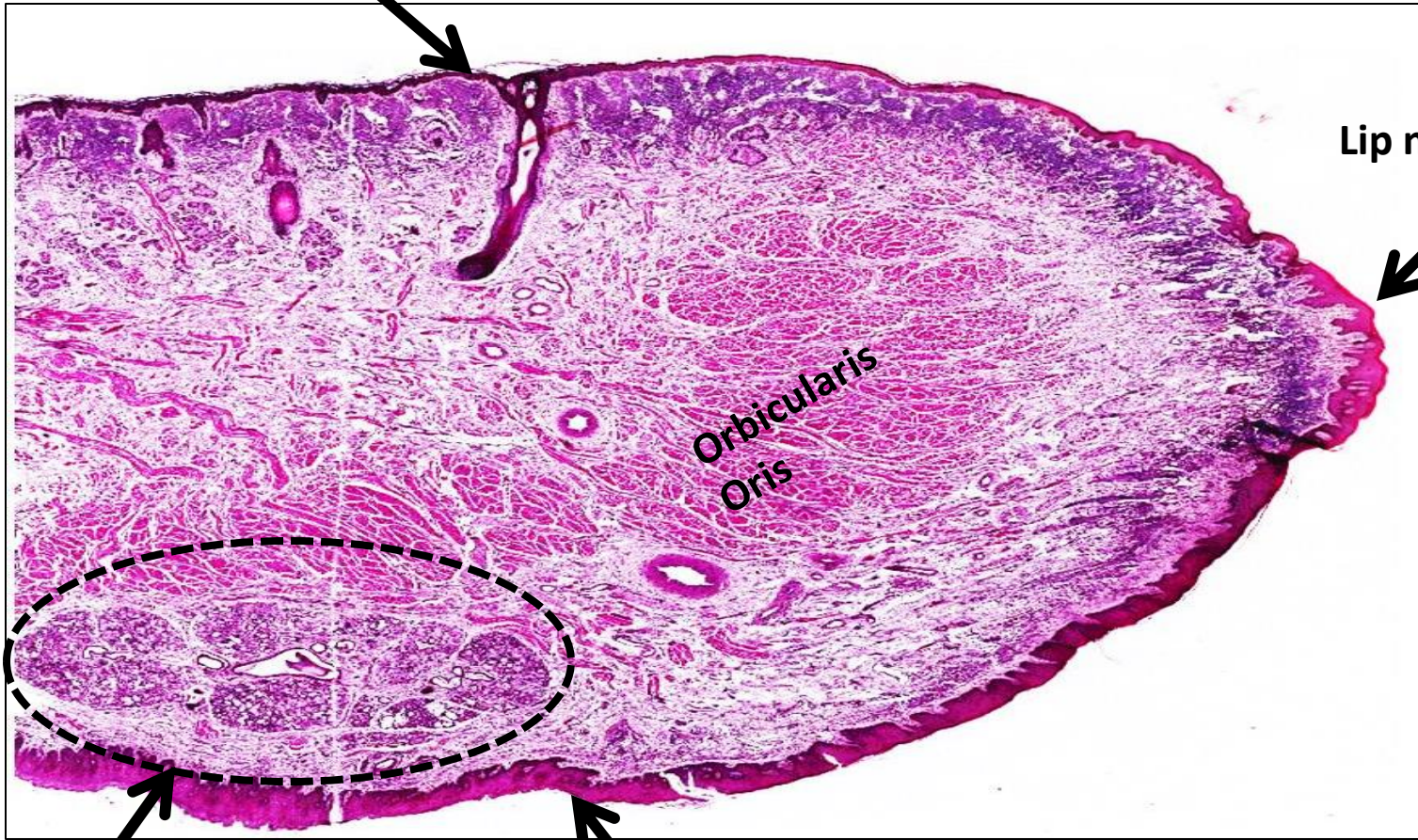
## **2<sup>nd</sup> year 2024**

- **The assigned slides:**

- 1. Lip**
- 2. Tongue x 2**
- 3. Parotid gland**
- 4. submandibular**
- 5. Esophagus (dog)**
- 6. Stomach (fundus)**
- 7. Gastro-esophageal junction**
- 8. Pyloro-duodenal junction**
- 9. Recto-anal junction**
- 10. Duodenum**
- 11. Ileum**
- 12. appendix**
- 13. Colon (large intestine)**
- 14. Liver**
- 15. Pancreas**

# Lip

Skin : keratinized stratified squamous epithelium



Lip margin

Orbicularis  
Oris

Labial glands

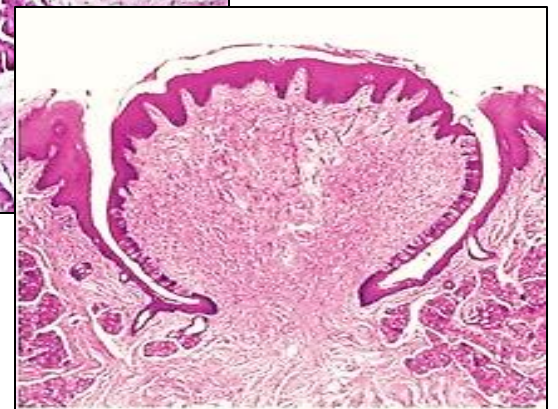
Mucous membrane:  
Non-keratinized stratified squamous epithelium

# Tongue

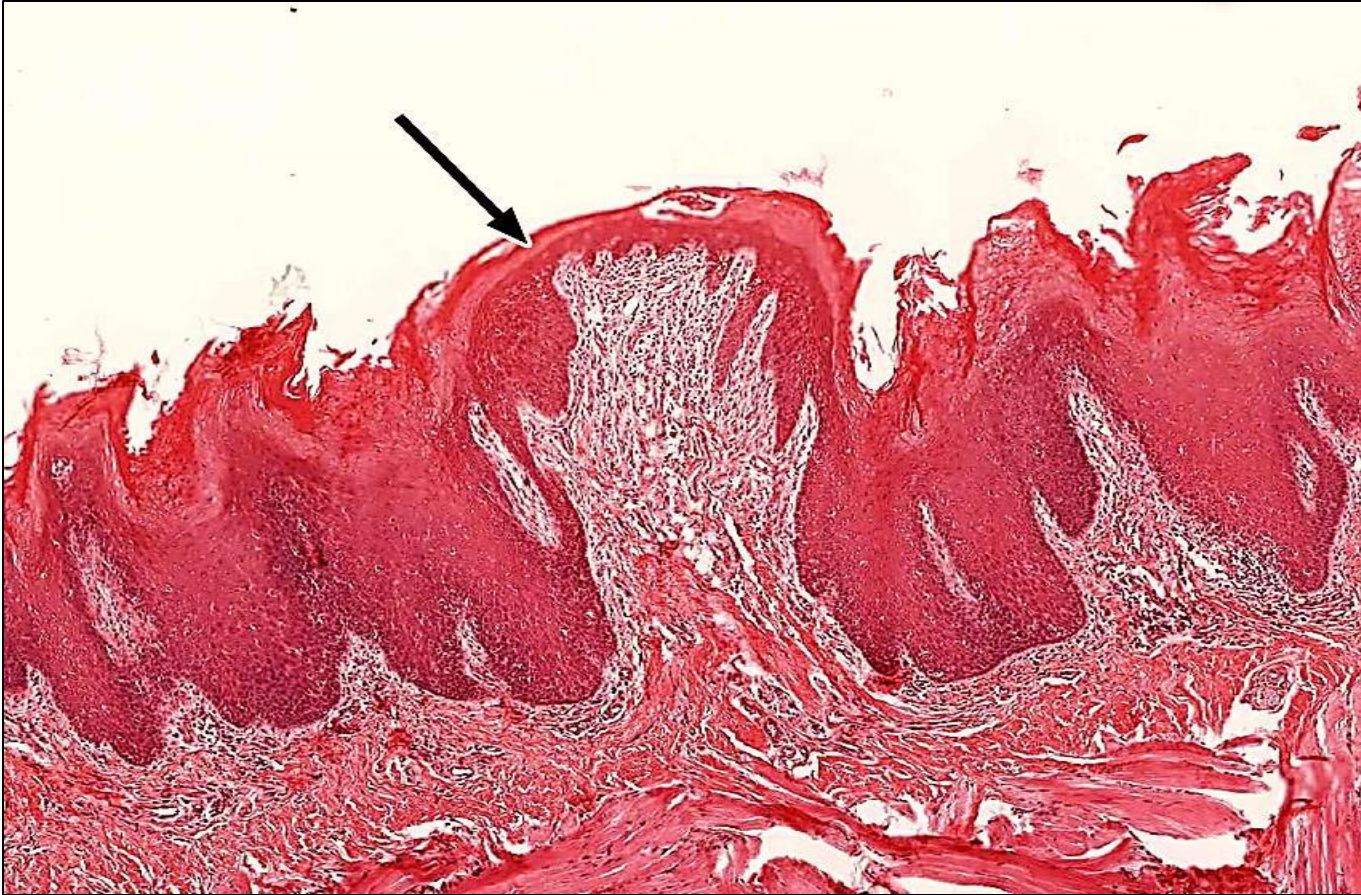




# Circumvallate papillae



# Fungiform papillae





# Foliate papillae

Taste buds



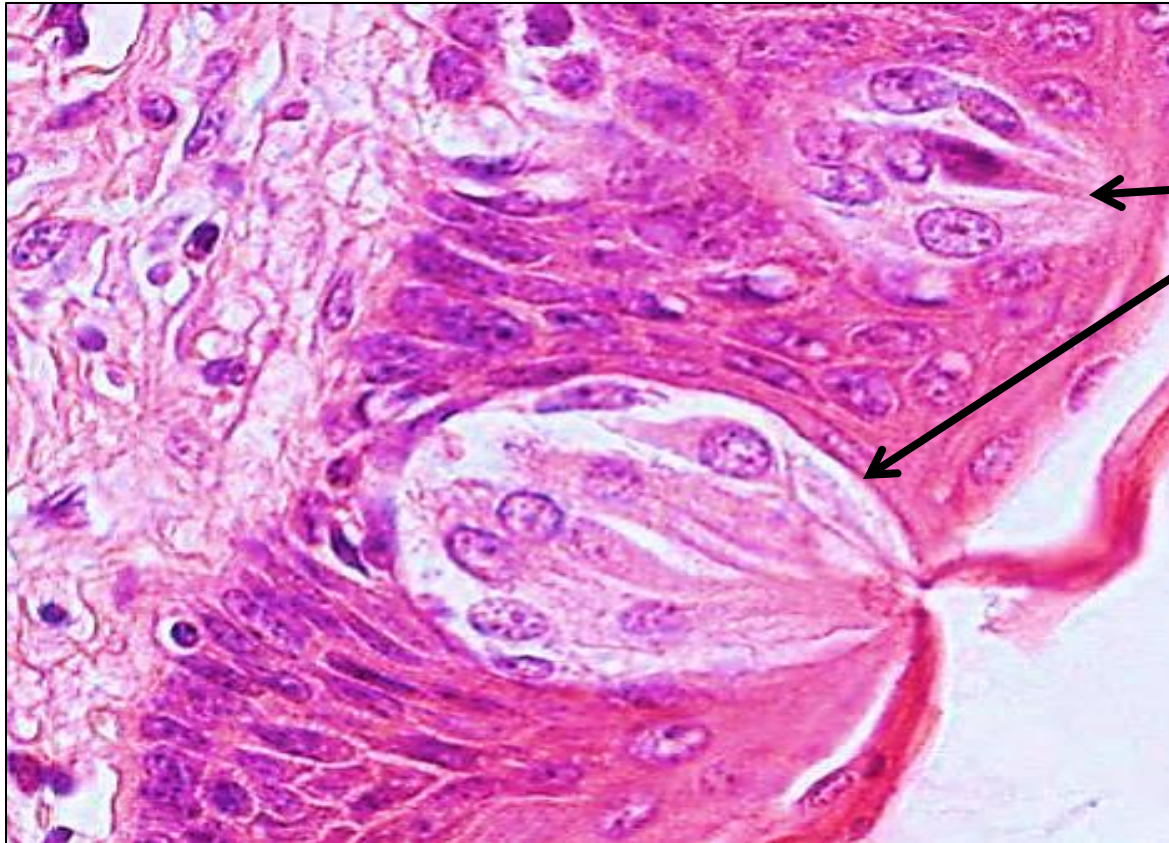
# Filiform papillae

**Epithelium : keratinized stratified squamous epithelium, No taste buds**

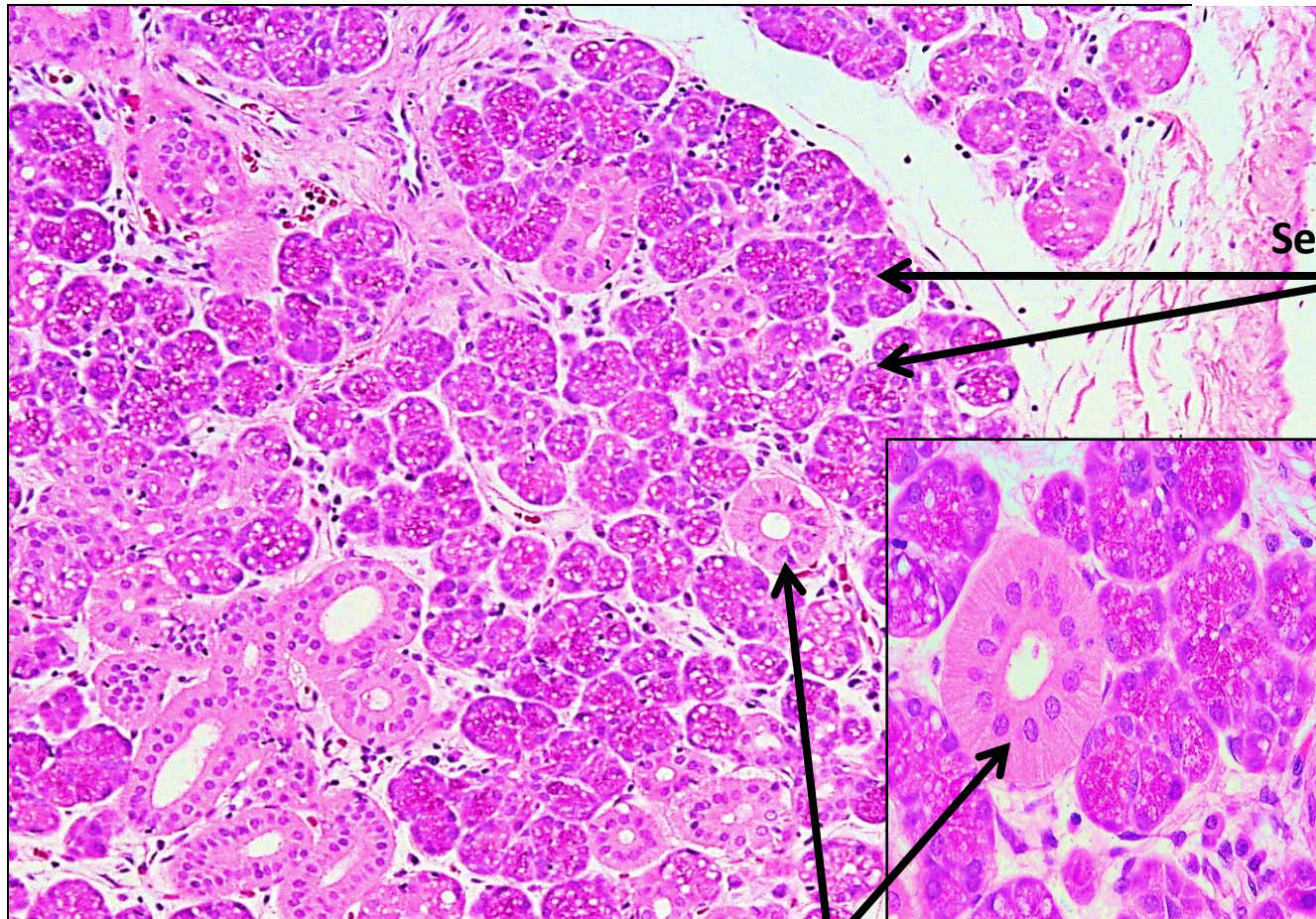
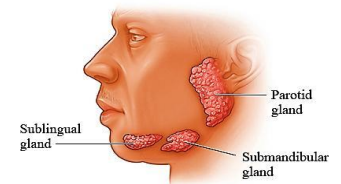




# Taste buds

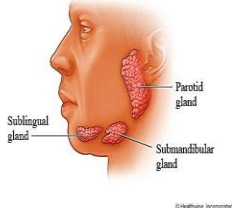


# Parotid salivary gland

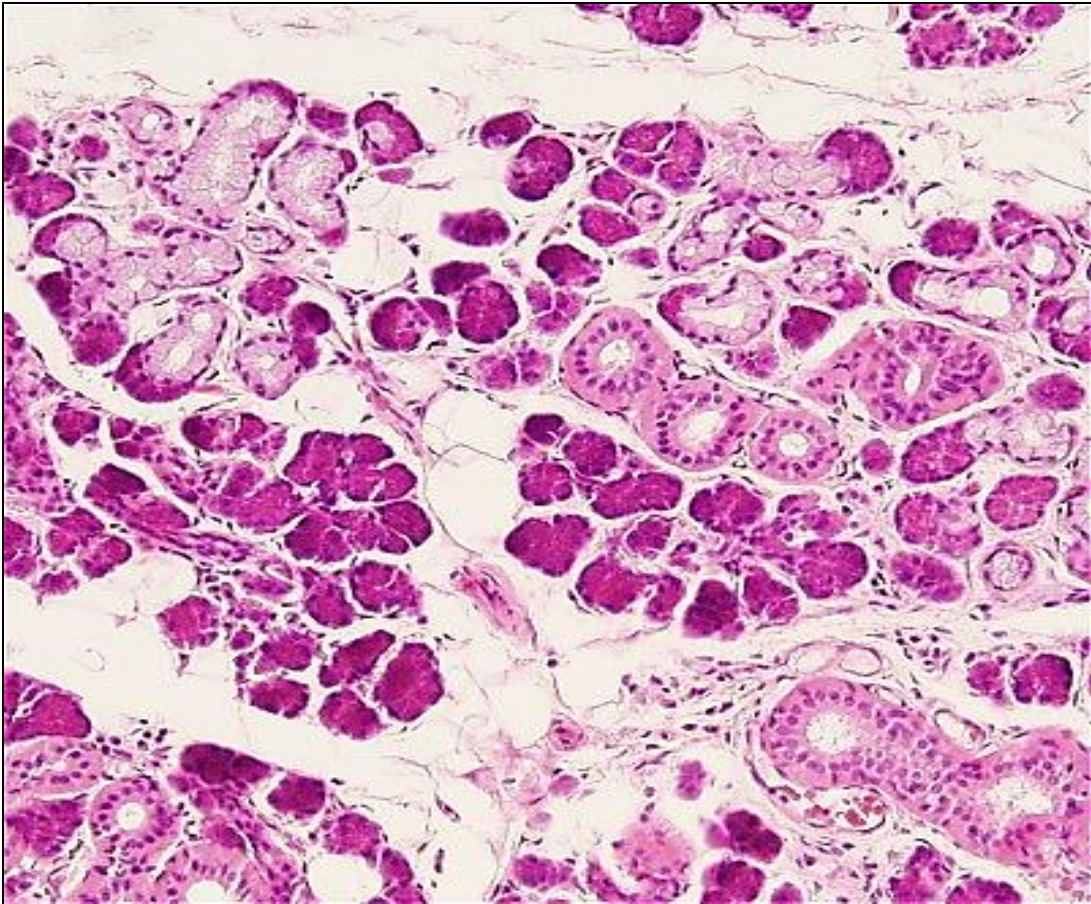




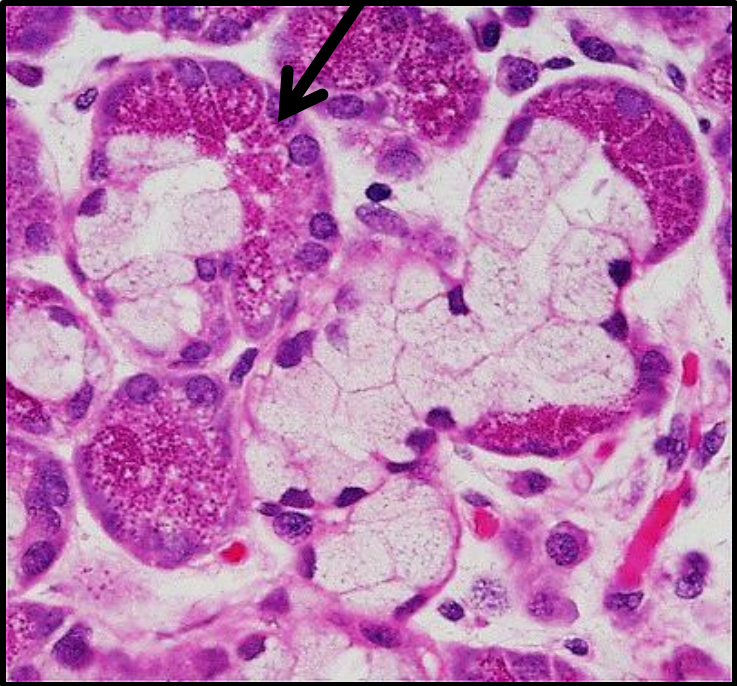
# Submandibular salivary gland



**Mixed muco-serous acini**

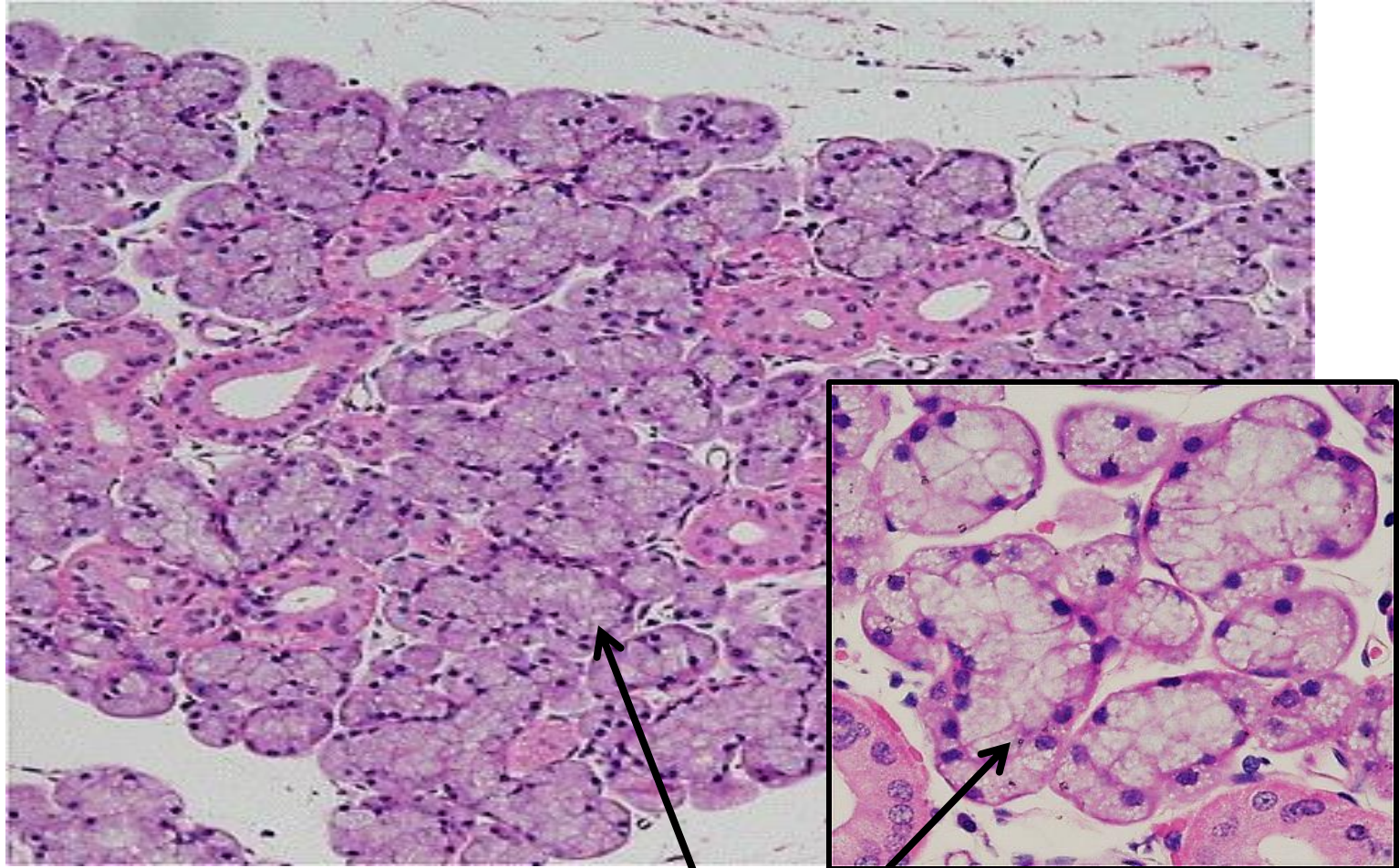


**Serous demilune (Crescent of Gianuzzi)**





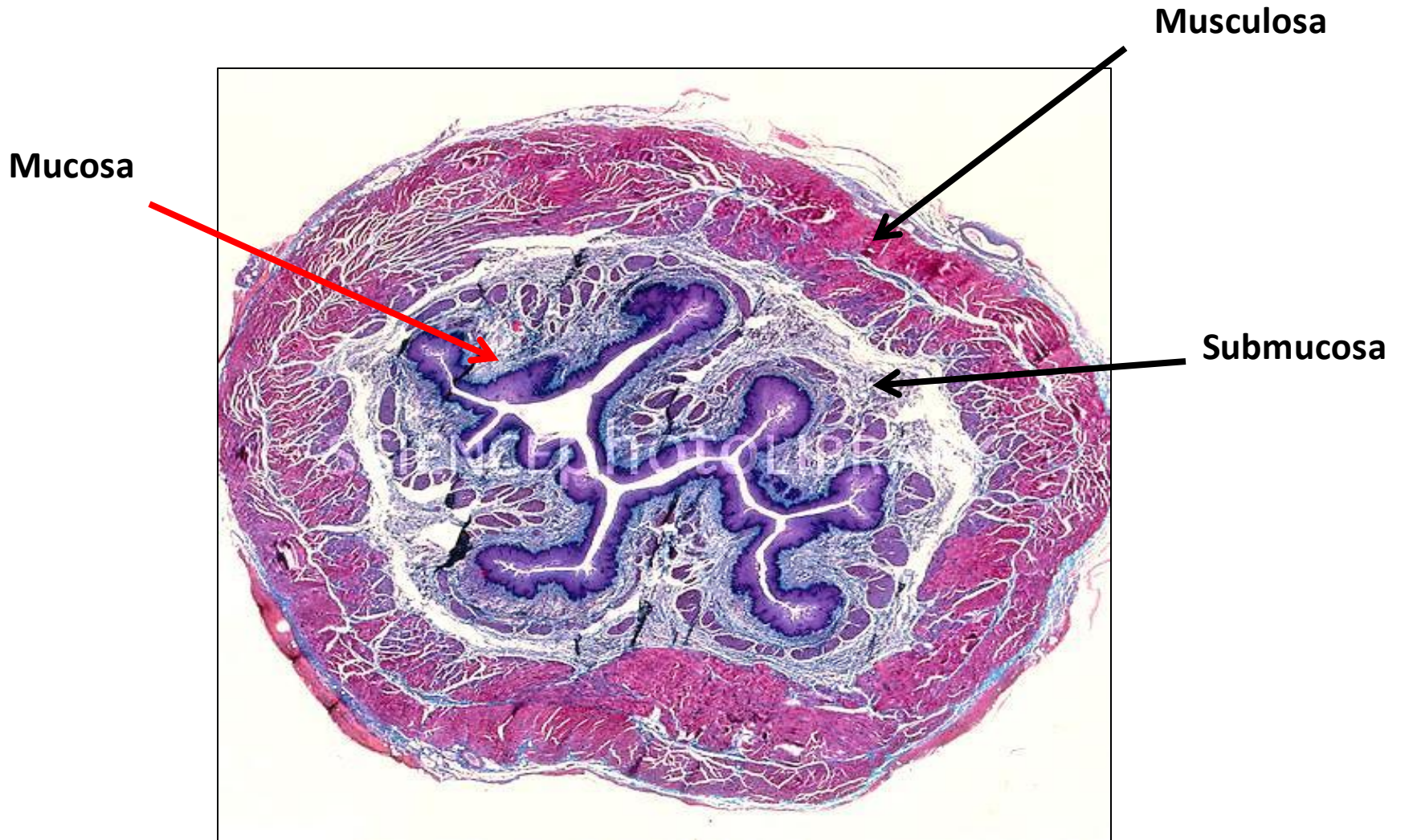
# Sublingual salivary gland



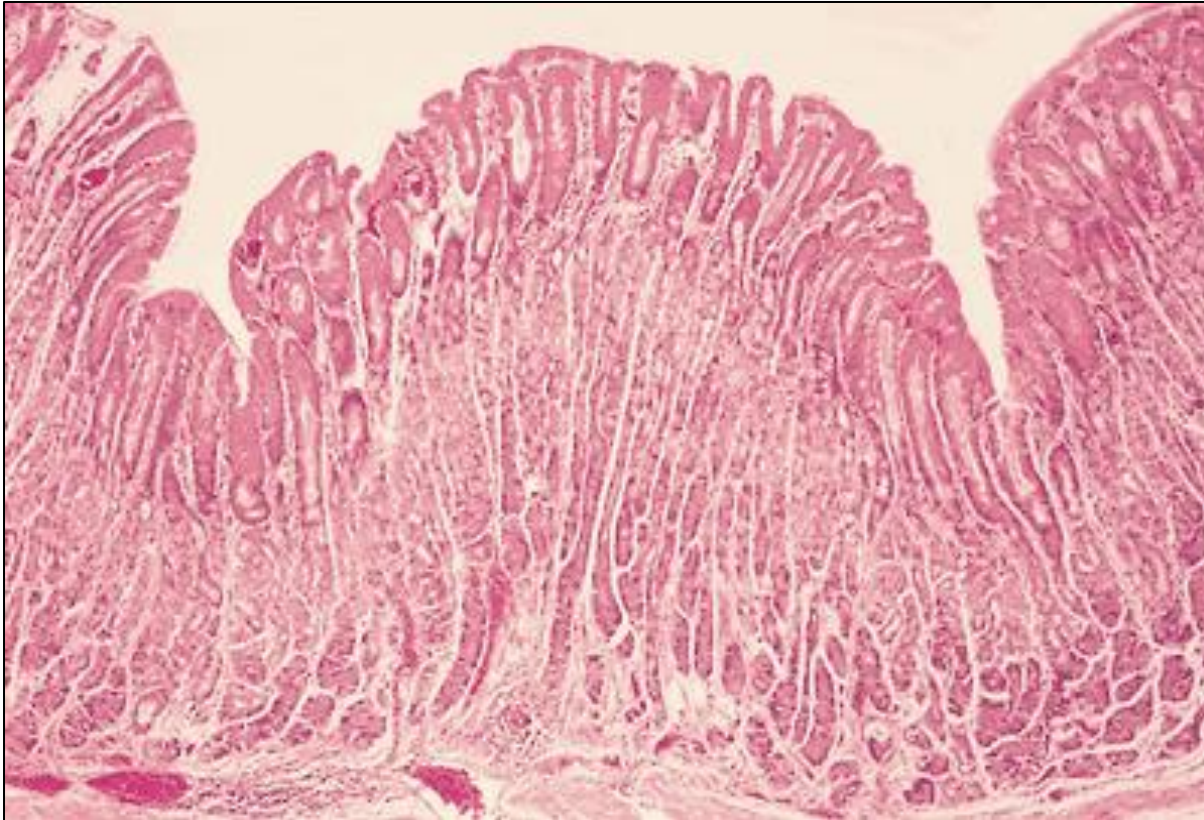
**Mucous acini**



# Esophagus



# Stomach (fundus)

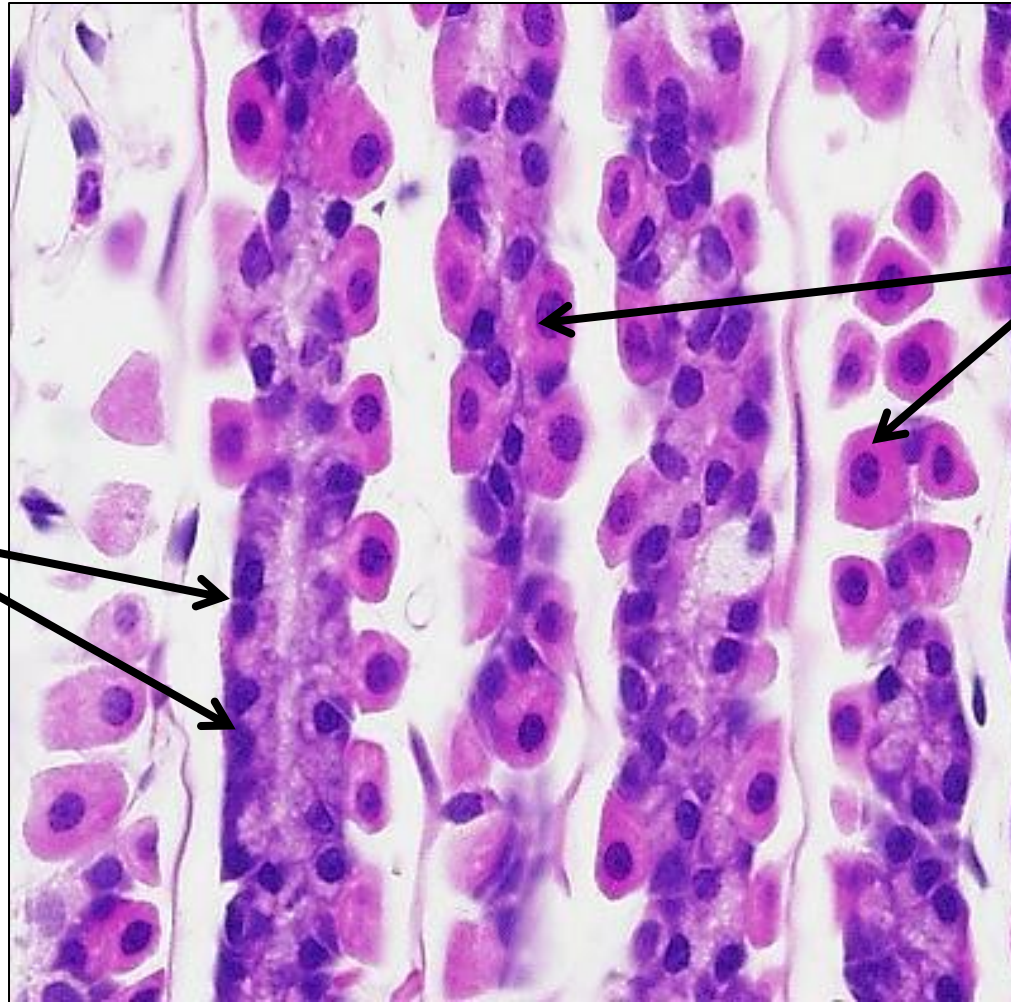


**Mucosa  
contains  
fundic glands**

- 1- Long simple branched tubular gastric glands**
- 2- short gastric pits**



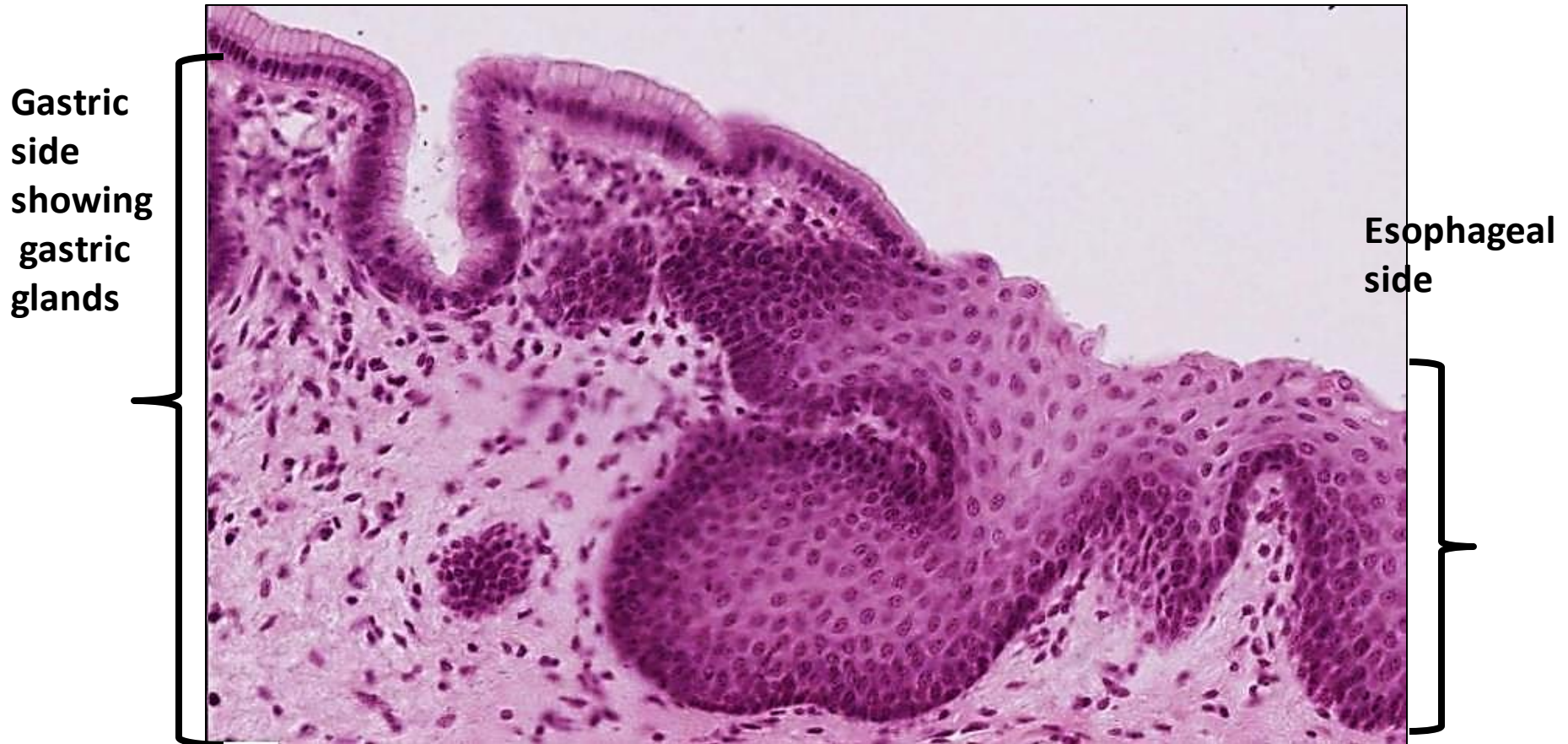
# Stomach ( fundic glands)



Chief (peptic)  
cells

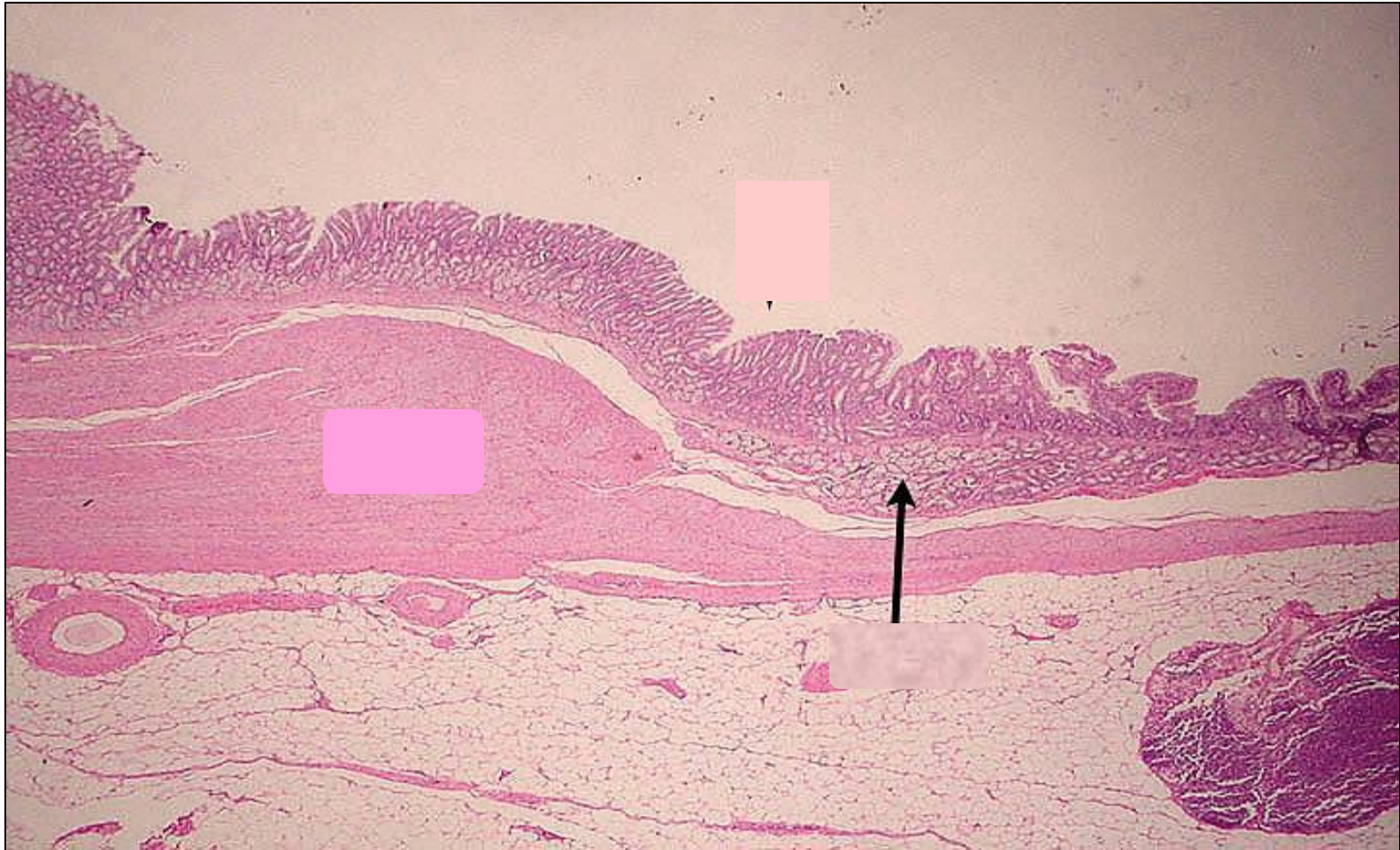
Parietal (oxyntic)  
cells

# Gastro- esophageal junction





# Gastro- duodenal junction



# Recto anal junction

Anal side  
showing non  
keratinized  
stratified  
squamous  
epith

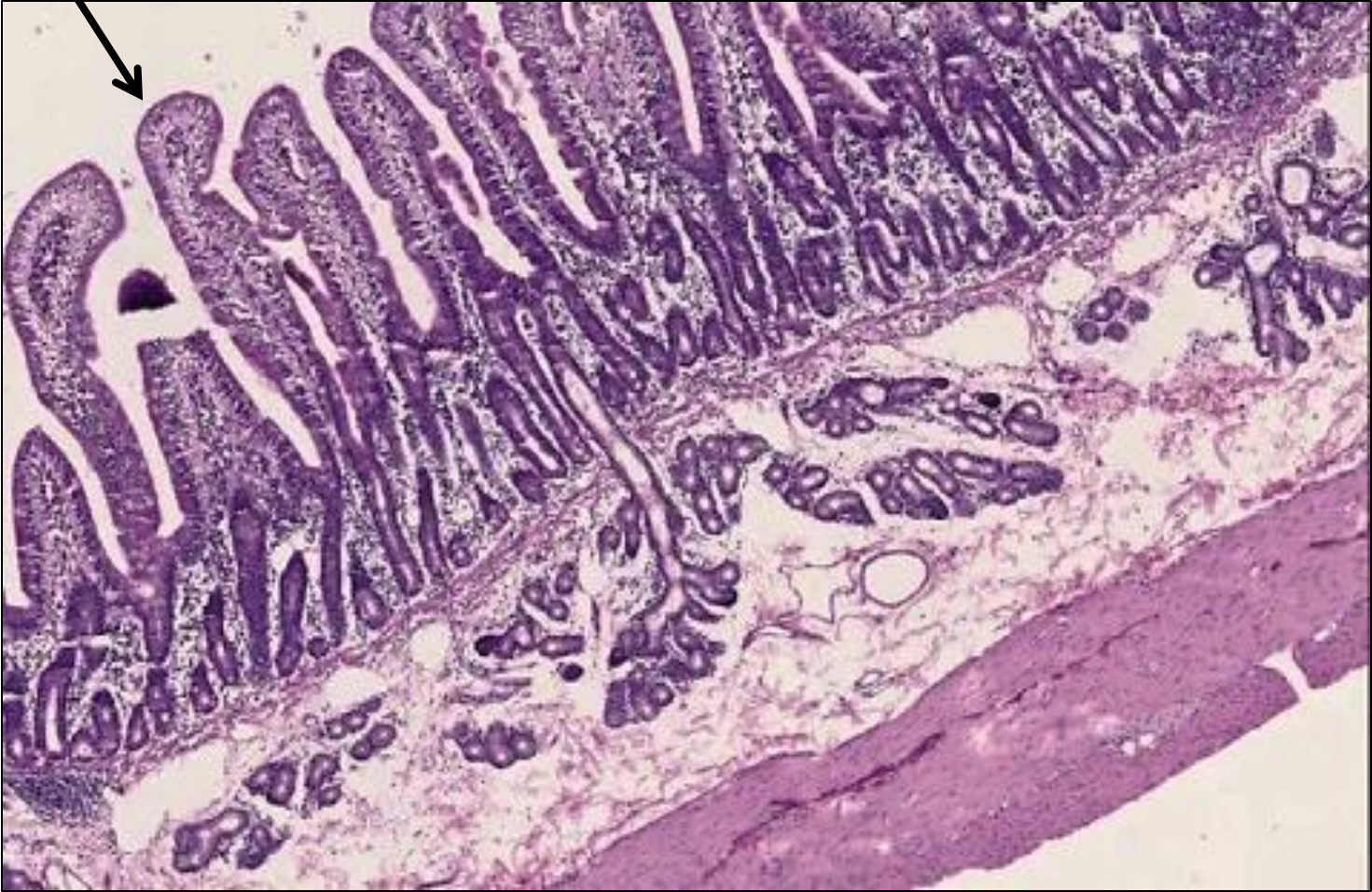


Rectum  
side  
showing  
intestinal  
glands



Intestinal villi

# duodenum



Submucosa showing Brunner's glands





# Duodenum

## Intestinal villi & crypts





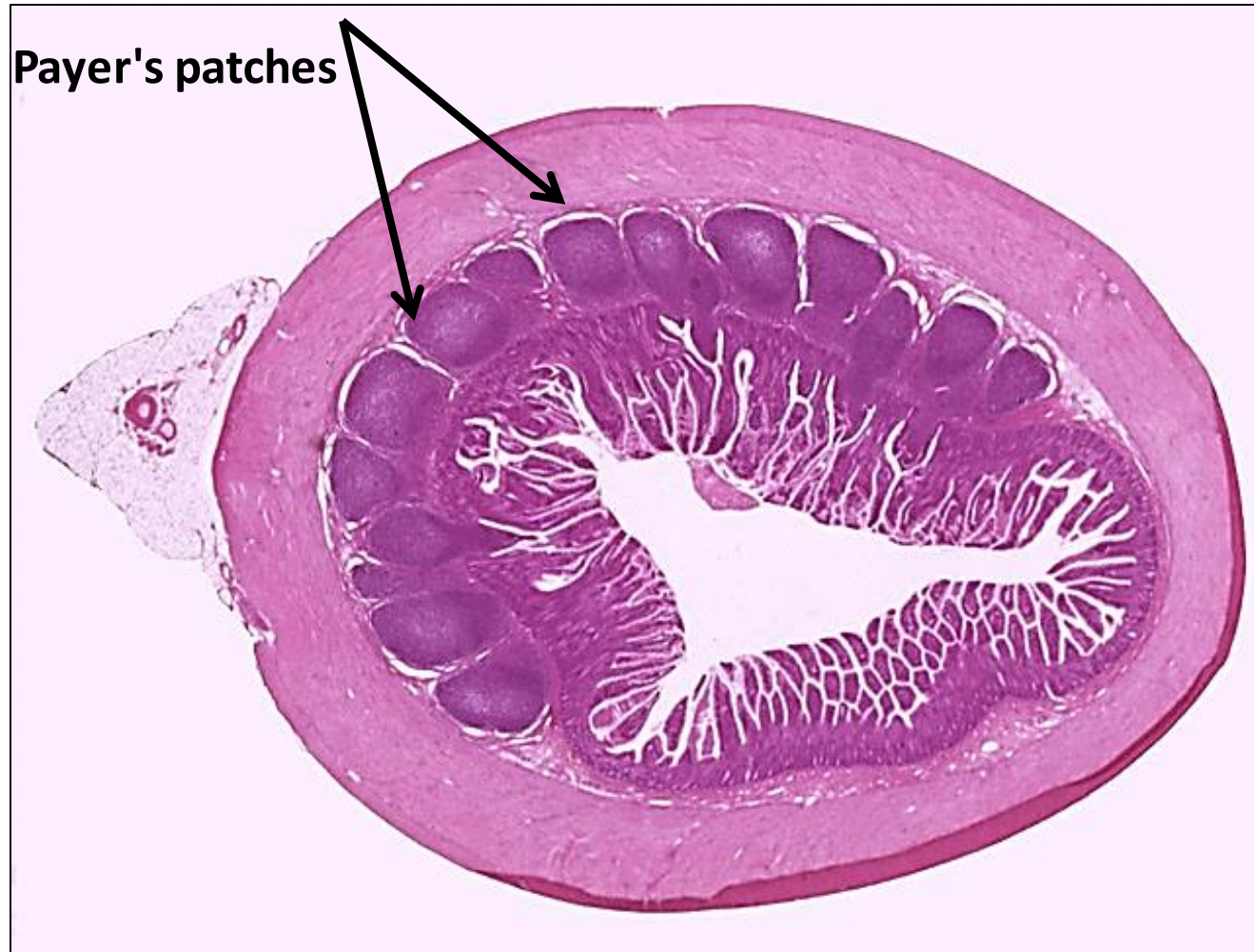
# Colon



**Intestinal crypts  
contain numerous  
goblet cells**



# ileum

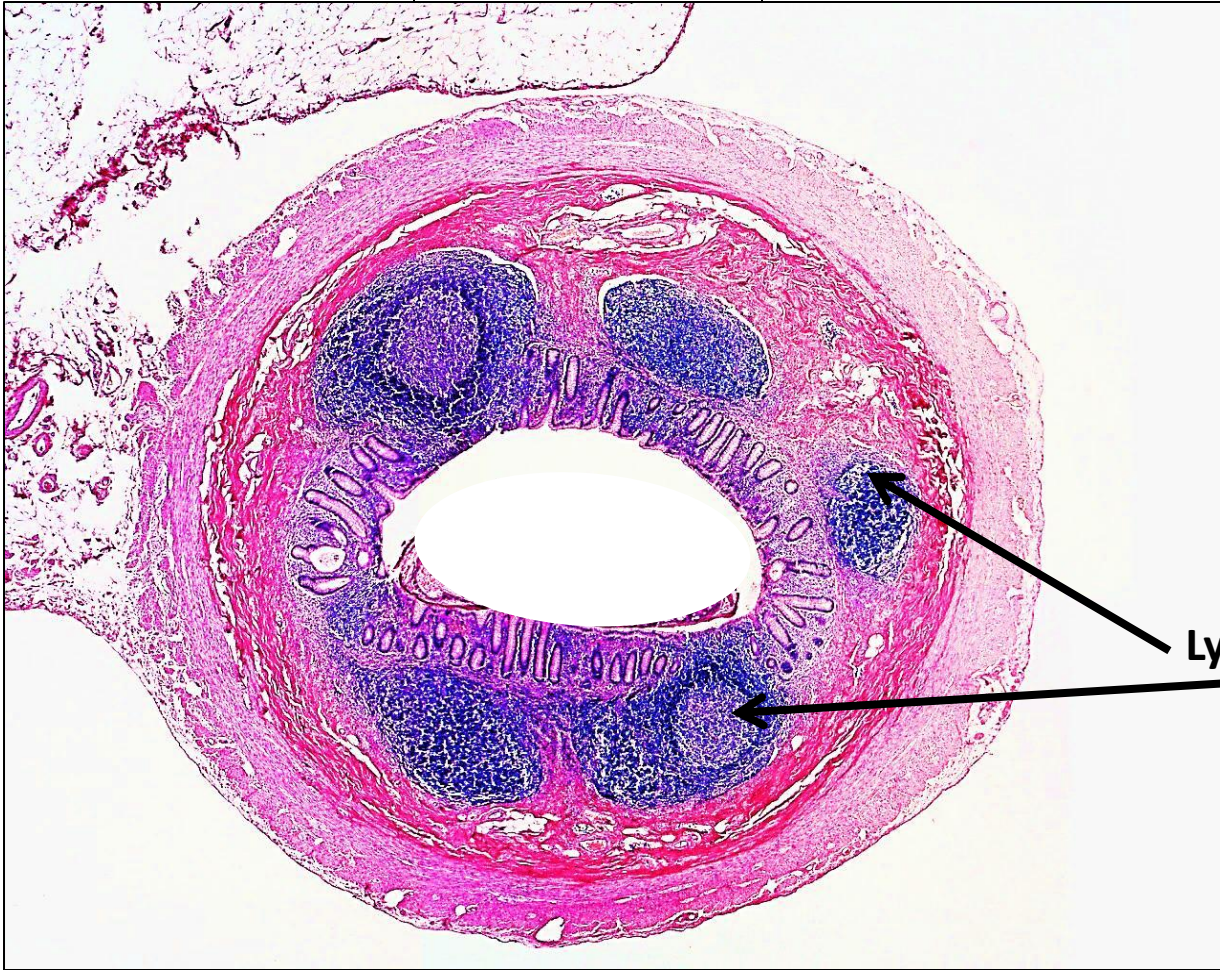


# Colon- Taenia coli





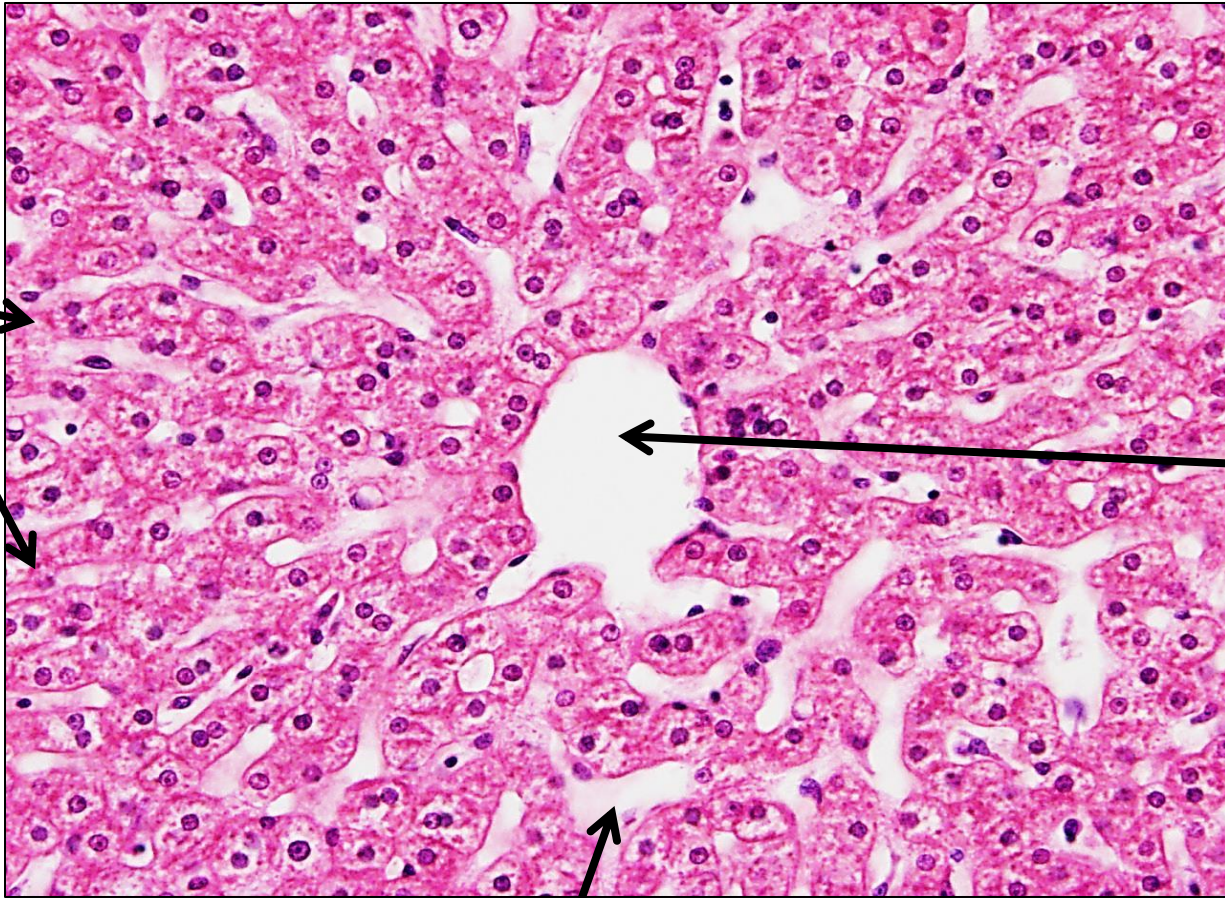
# Appendix



Lymphoid follicles



# Liver



**Cords of  
liver cells**

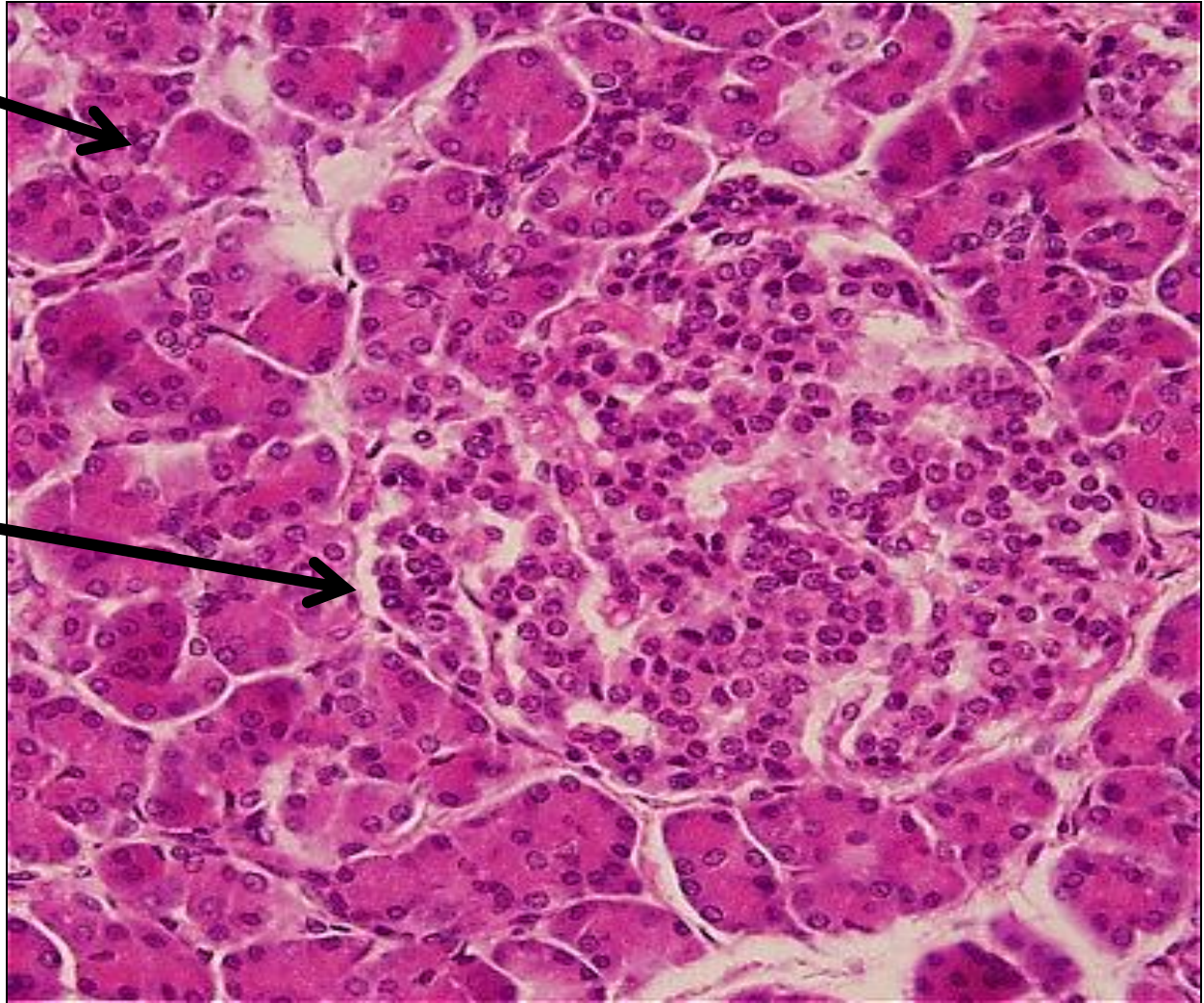
**Central vein**

**Liver sinusoids**



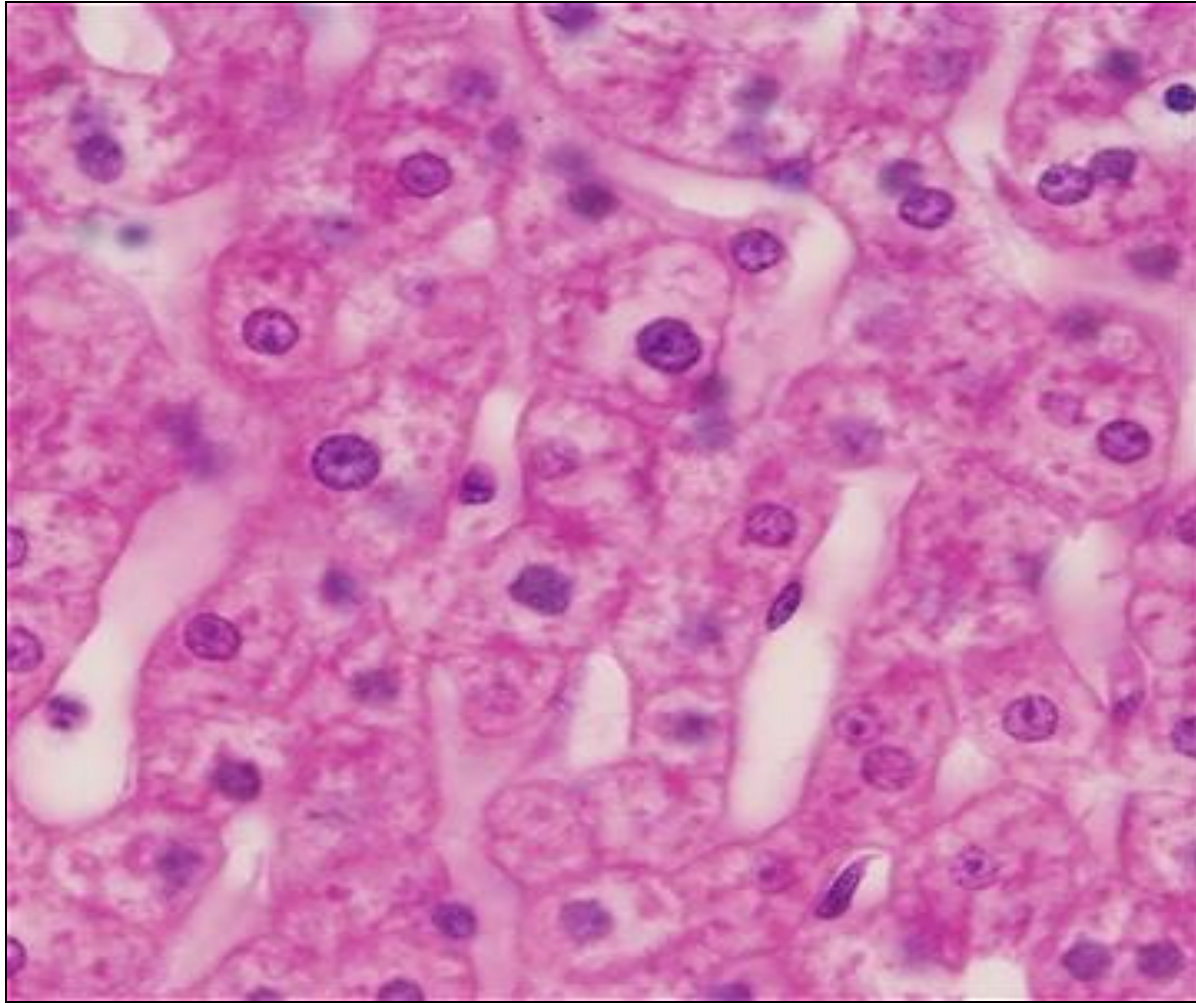
# Pancreas

Exocrine pancreas



Islets of Langerhans





## Hepatocytes



# Thank you

