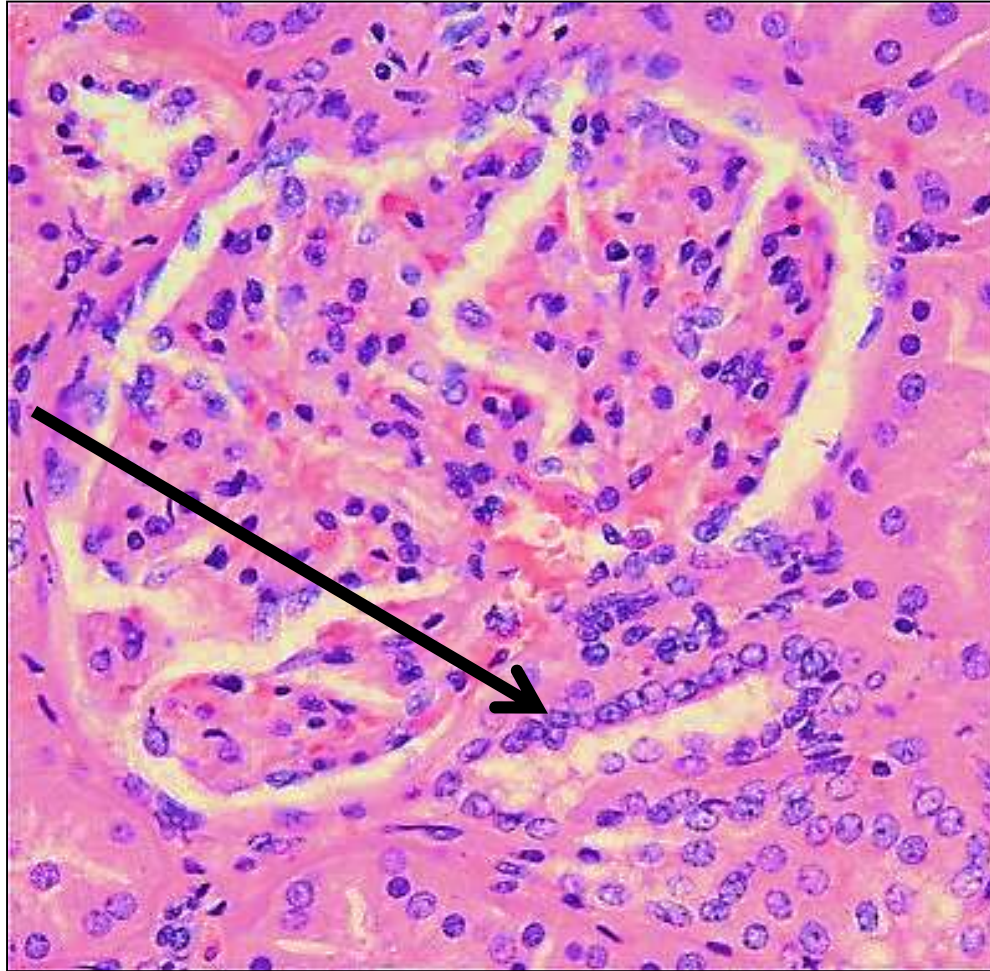


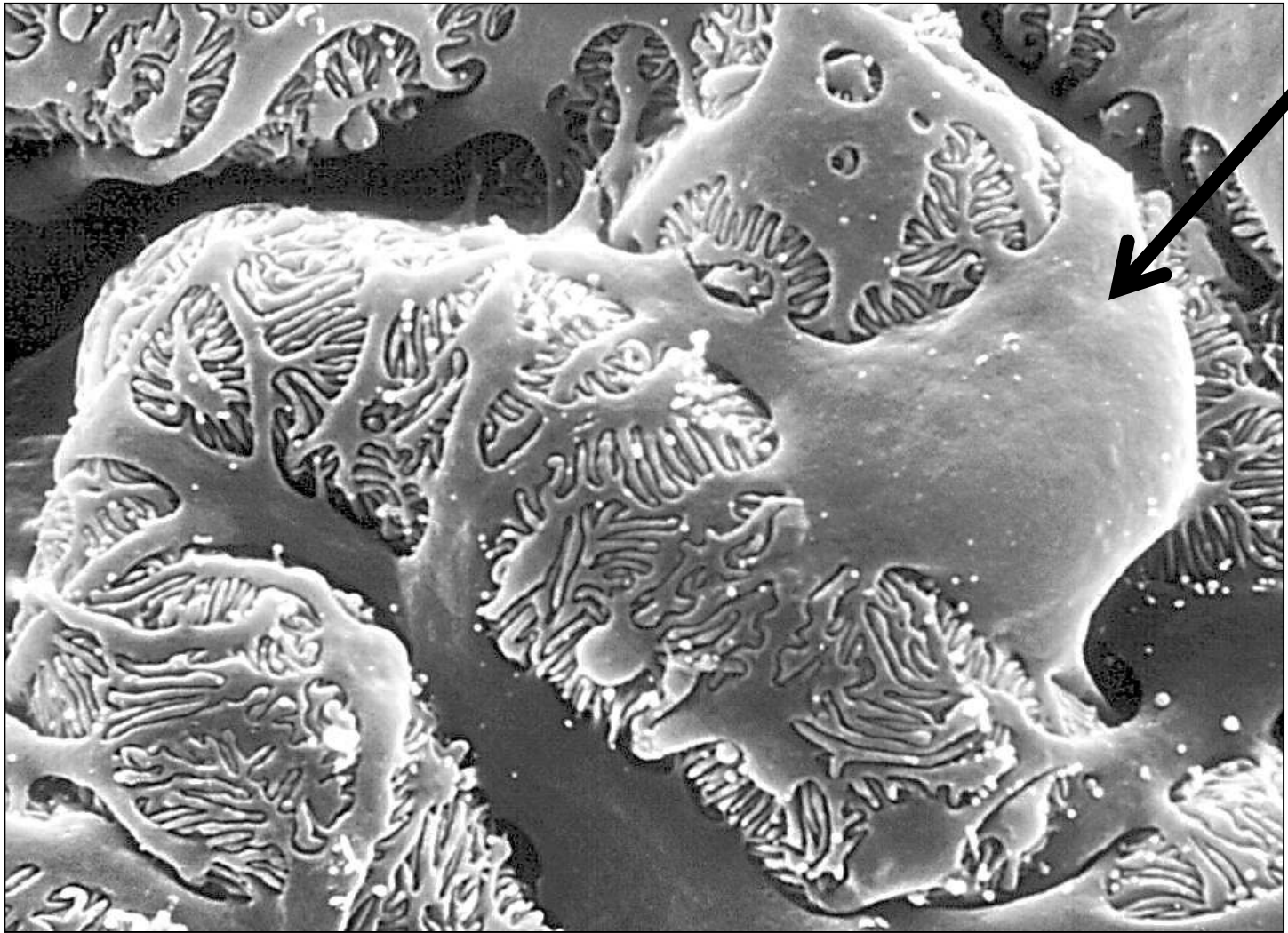
# **Practical slides**

## Juxta- glomerular apparatus

Macula densa



# Podocyte



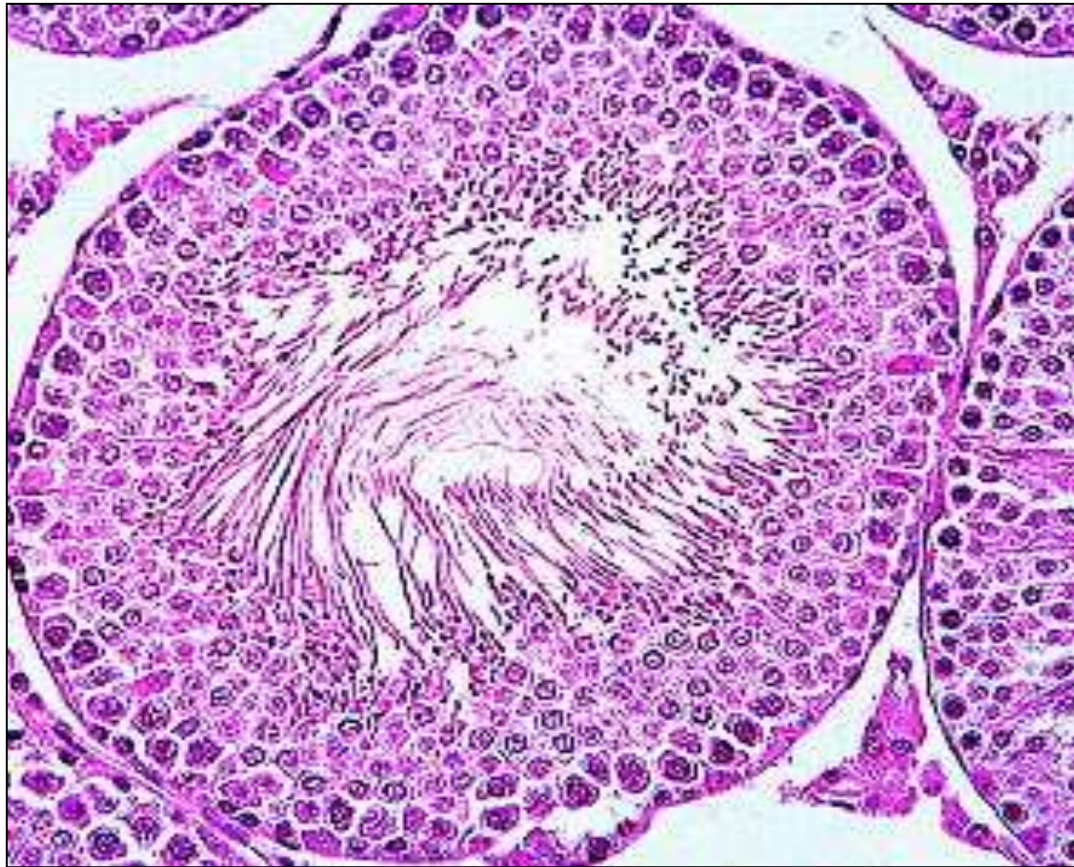
# The testis

Seminiferous tubules



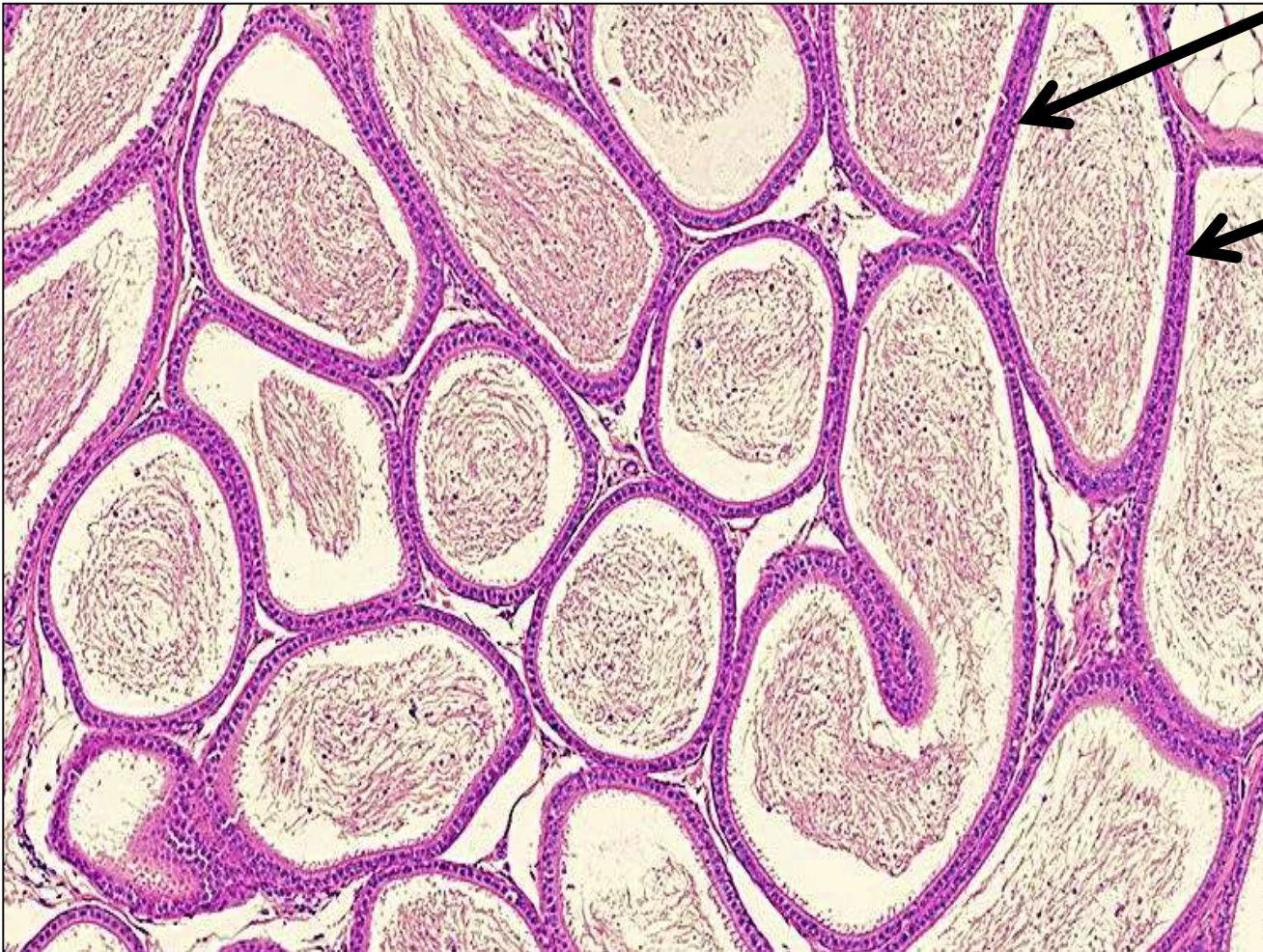
Interstitial  
cells of  
Leydig

# Cross section in Testis



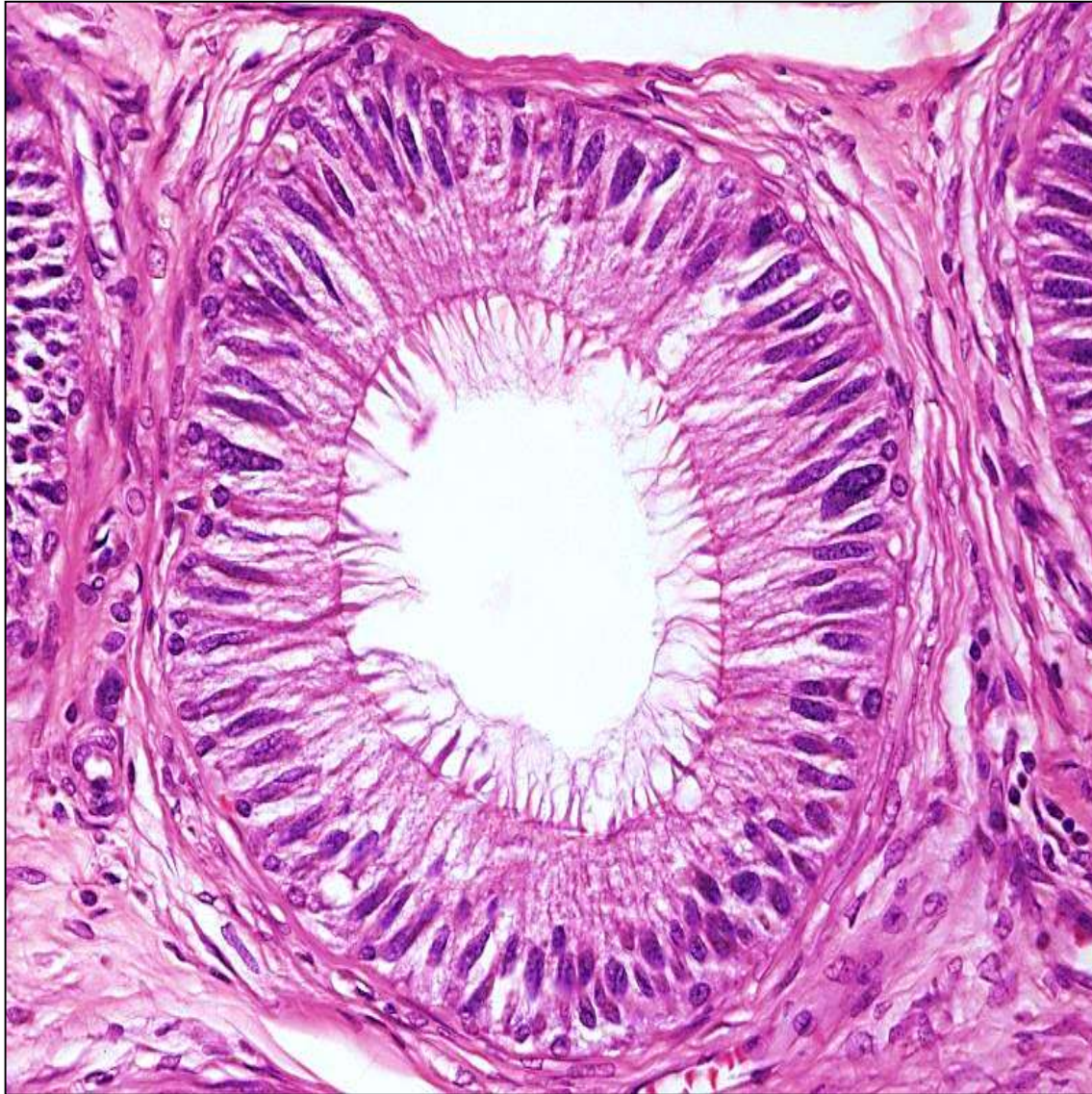
# The epididymis

Pseudostratified columnar with Stereocilia

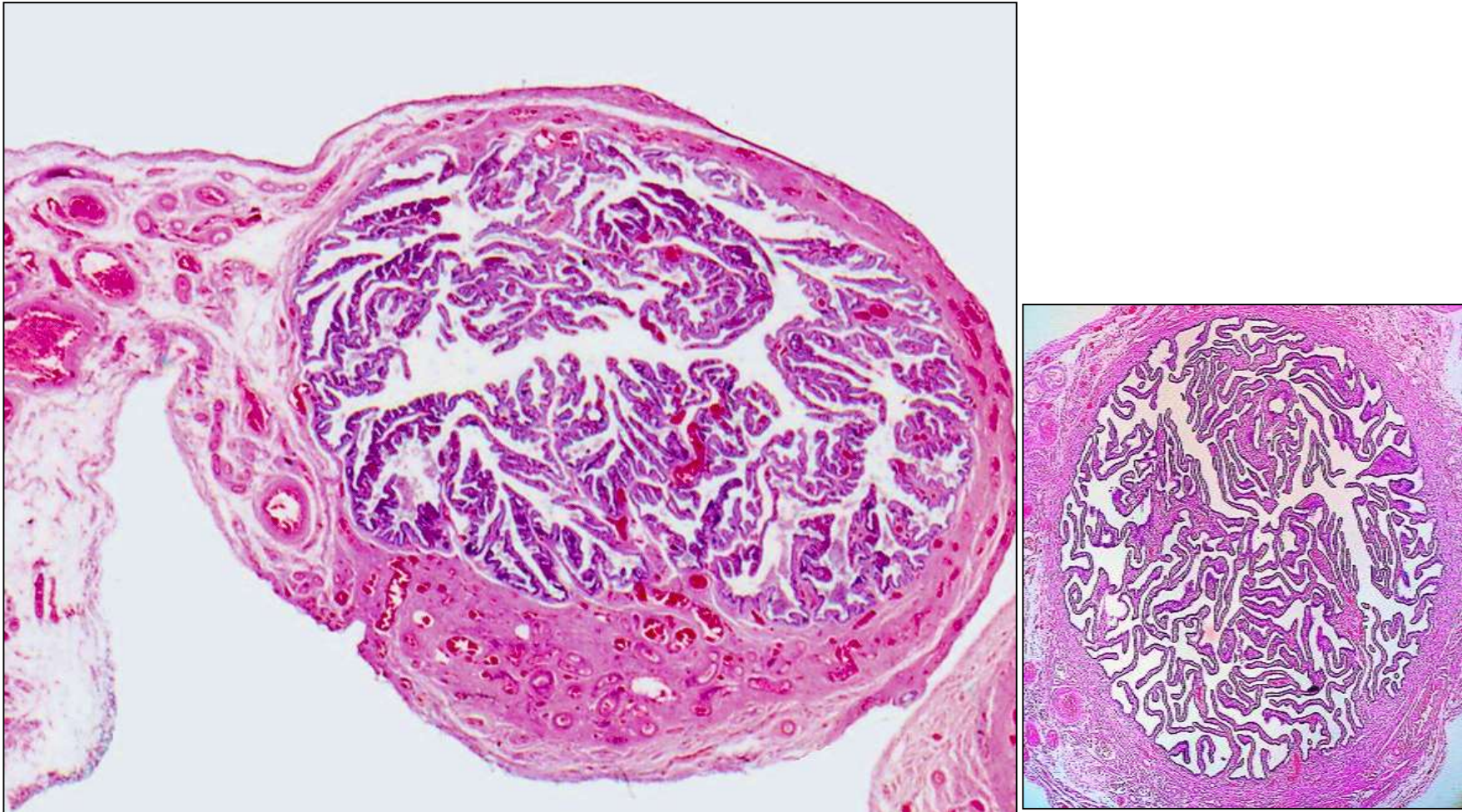


Ductus epididymis

# Cross section in epididymis



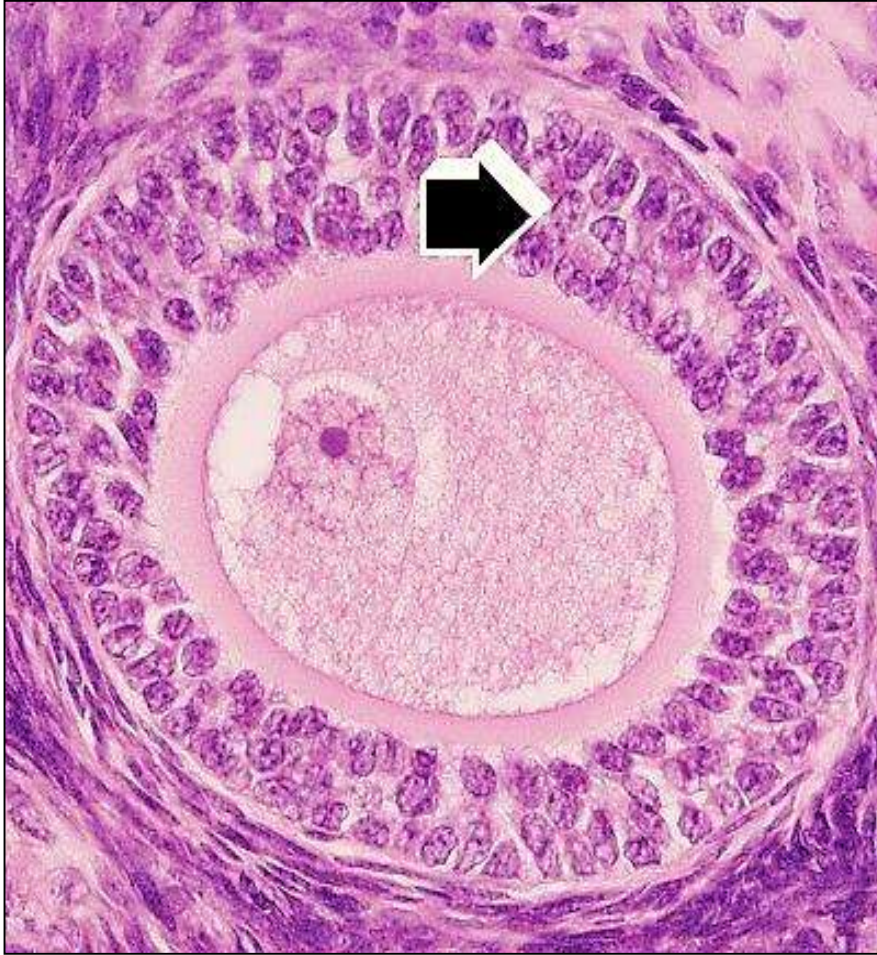
# The fallopian tube



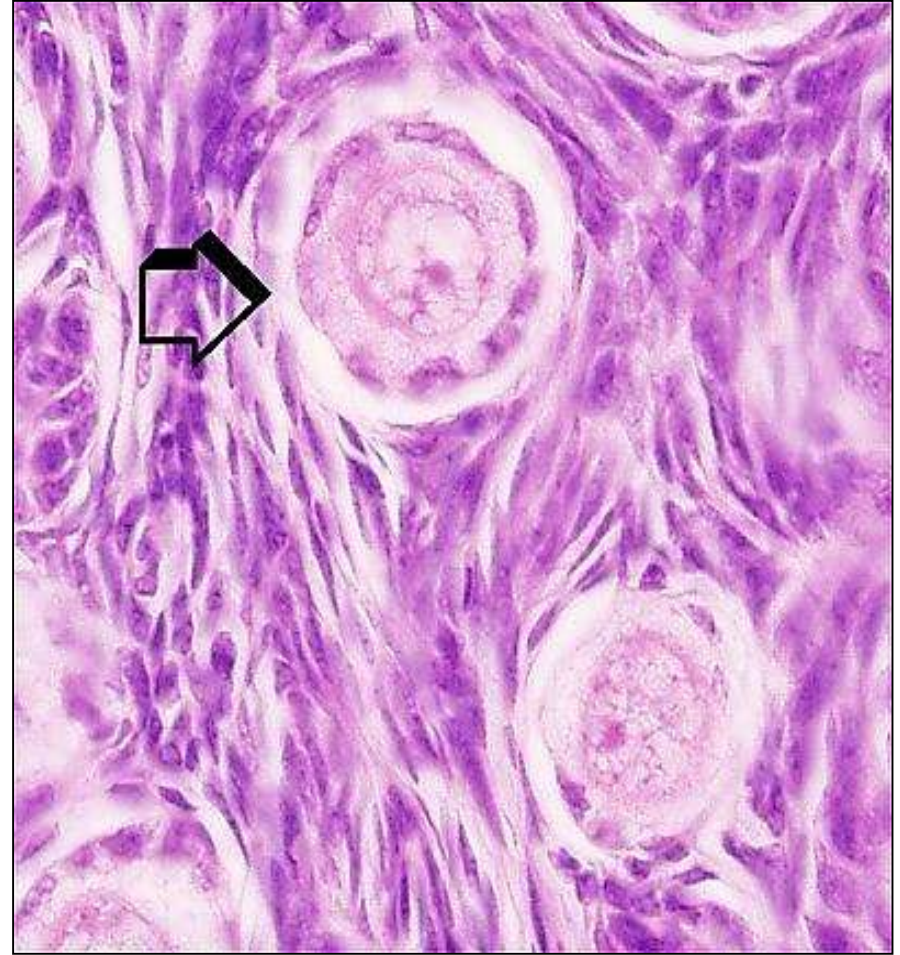
- 1- highly folded mucosa
- 2- Lined with simple columnar partially ciliated partially secretory (Peg cells)
- 3- muscularis : IC, OL



# Ovarian follicles



**Multi-laminar primary follicle**



**Primordial follicle**

# Thank you

