

وسهلا



أهلا

يُمنع أخذ السلايدات بدون
إذن المحرر واي اجراء
يخالف ذلك يقع تحت طائلة
المسؤولية القانونية
جميع المعلومات للاستخدام
التعليمي فقط

الأستاذ الدكتور يوسف حسين

رئيس قسم التشريح والأنسجة والأجنة

كلية الطب - جامعة مؤتة - الأردن

دكتورة من جامعة كولونيا المانيا

Prof. Dr. Youssef Hussein Anatomy - YouTube

الواتس 00201224904207

Ankle joint

[Prof. Dr. Youssef Hussein Anatomy - YouTube](#)

Lower end
of tibia

Lateral
malleolus



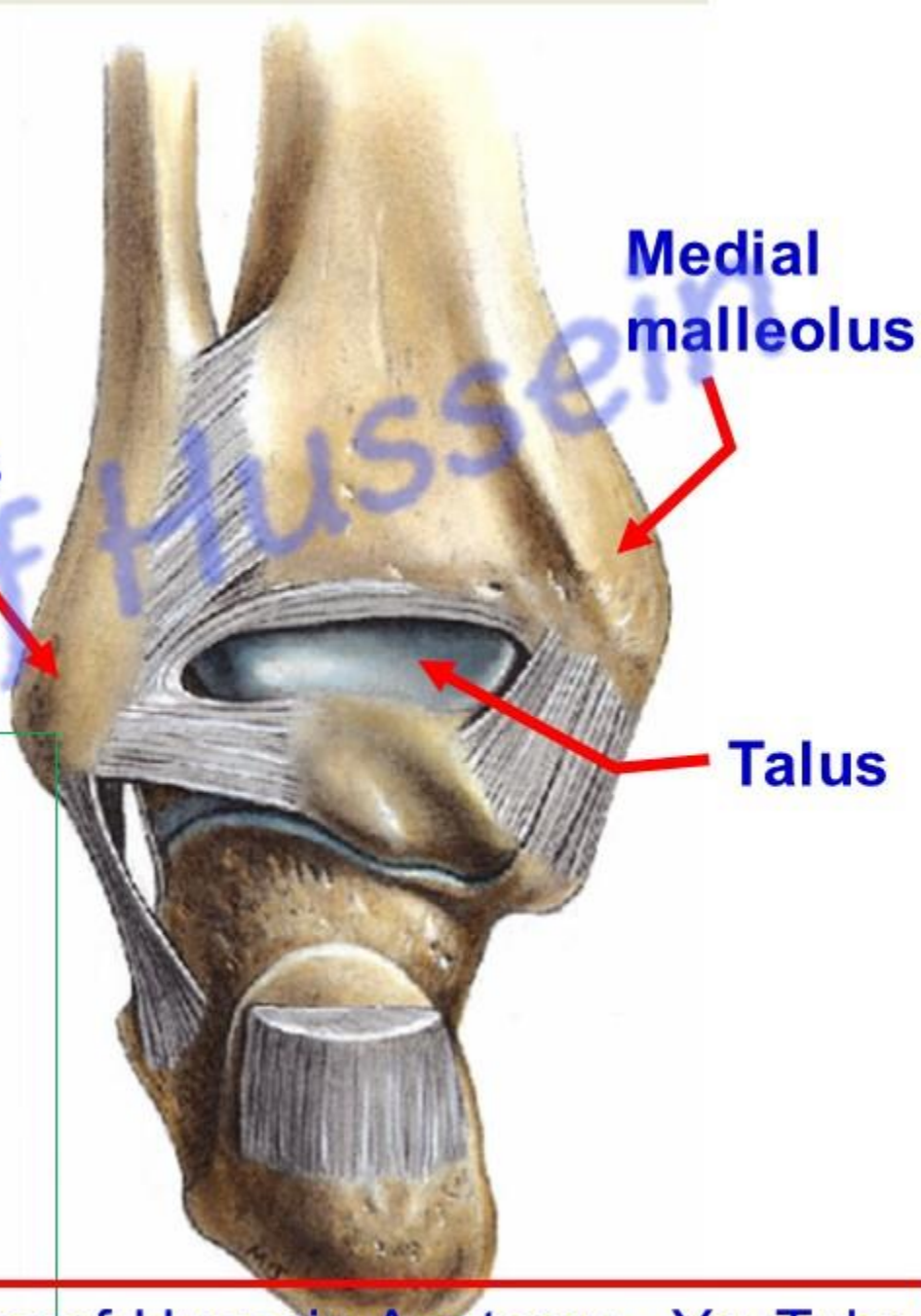
Medial
malleolus

Lateral
malleolus

Talus

Medial
malleolus

Talus



• **Ankle Joint**

I- Type; Synovial joint, hinge variety.

II- Articular surfaces

A- Superior articular surface:

- 1) Lower end of the tibia.
- 2) Lateral surface of the medial malleolus.
- 3) Medial surface of the lateral malleolus.

B- Inferior articular surface; talus.

Articular surface of Talus

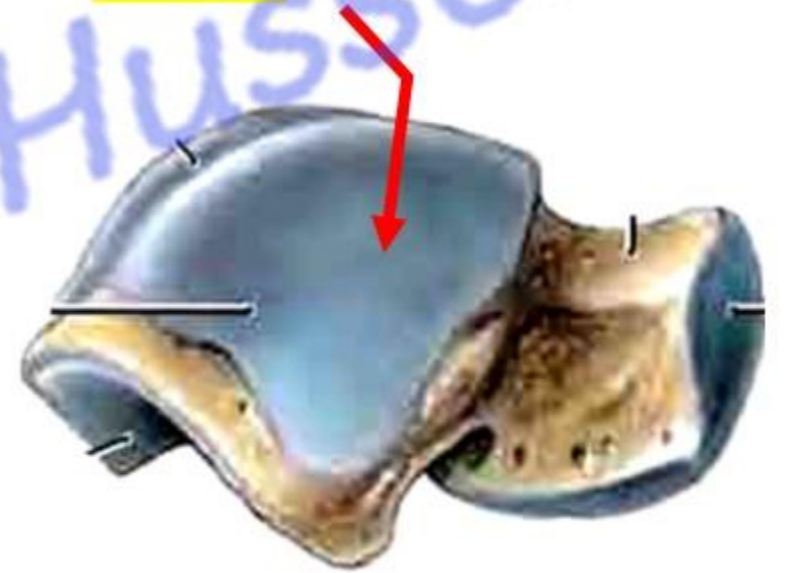
Superior trochlear surface articulates with lower end of tibia



Coma shape articulates with medial malleolus



Triangle shape articulates with lateral malleolus



- **Capsule**: surrounds the articular surfaces.
- **Synovial membrane**: lines the capsule.

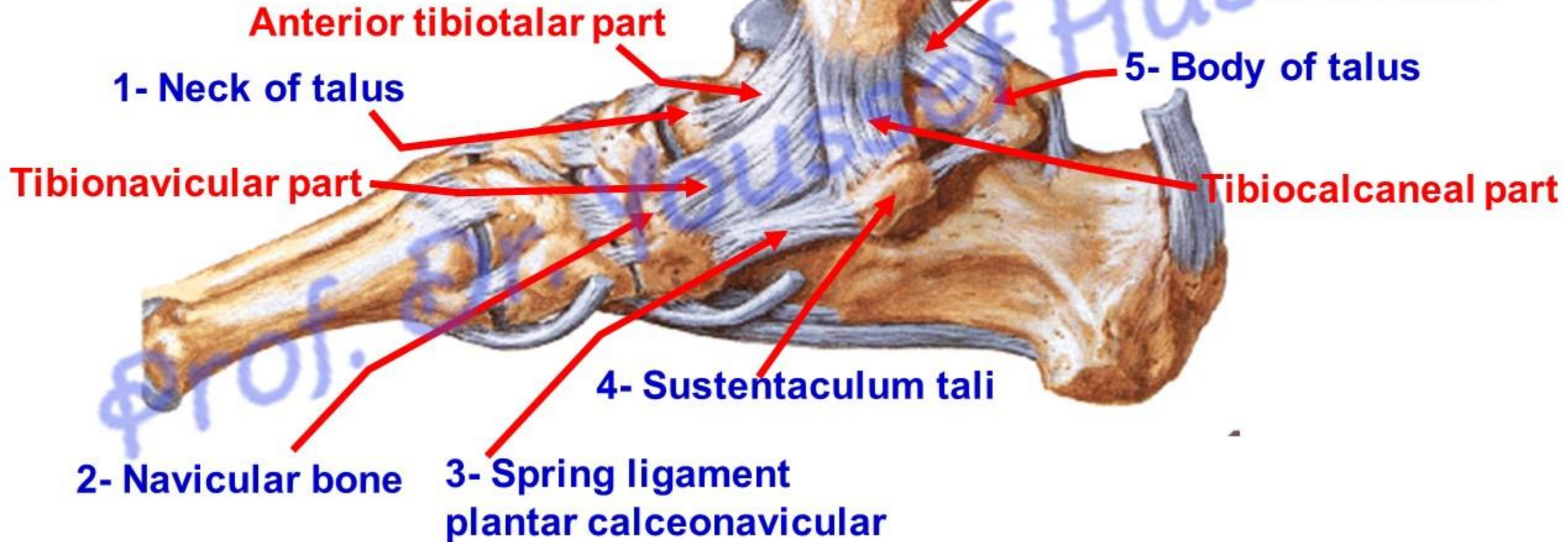
Ligaments of Ankle joint

[Prof. Dr. Youssef Hussein Anatomy - YouTube](#)

❖ Deltoid (medial) ligament

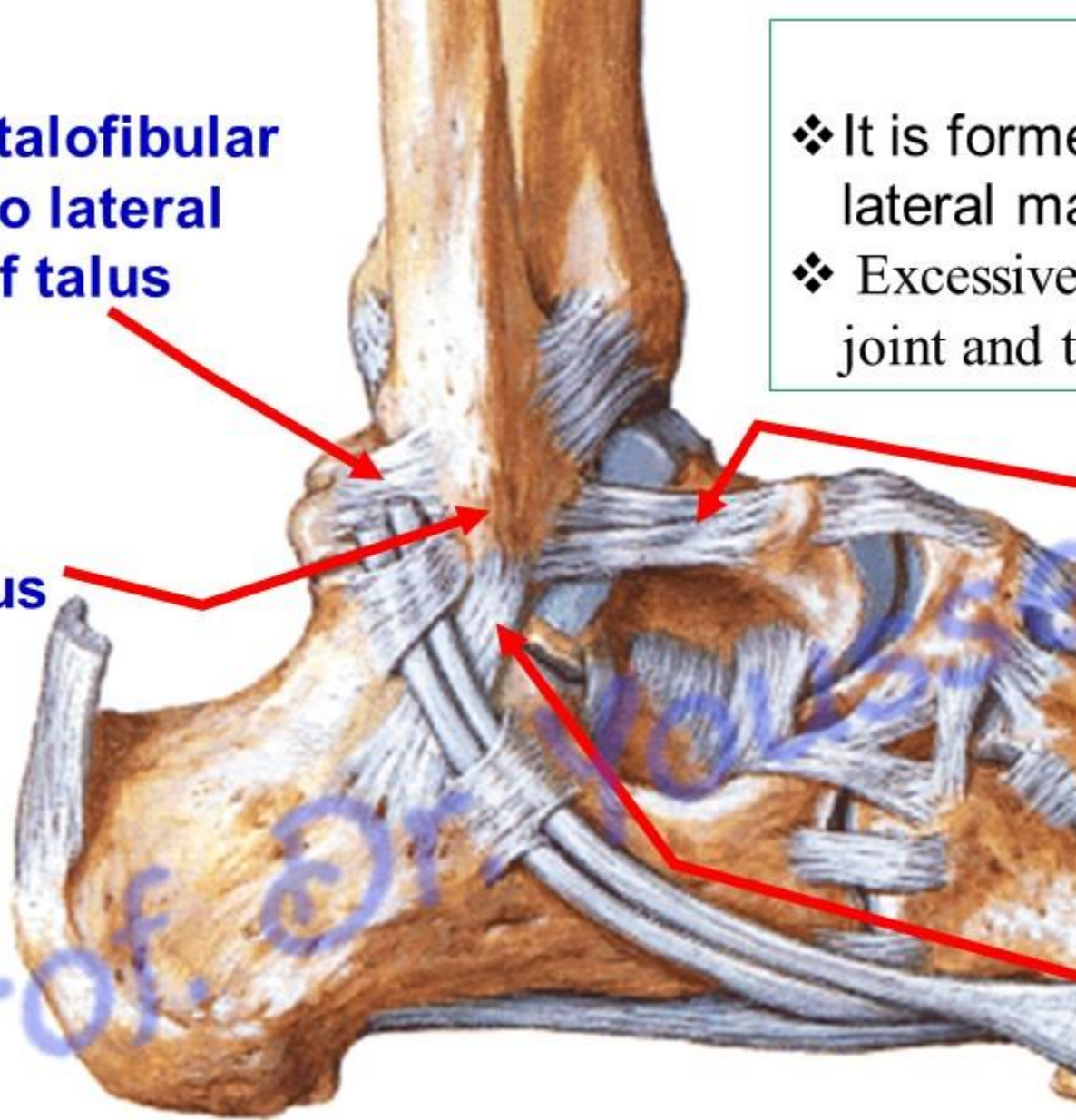
triangular in shape and a very strong ligament

Excessive **eversion** leading to sprain of the joint and tear off the medial (deltoid) ligament



Posterior talofibular ligament to lateral tubercle of talus

Lateral malleolus



❖ **Lateral ligament**

- ❖ It is formed of three bands attached to the lateral malleolus of fibula
- ❖ Excessive **inversion** leading to sprain of the joint and tear off the lateral ligament

Anterior talofibular ligament to neck of talus is (the most common to injury)

Calcaneofibular ligament to the lateral surface of calcaneus



Relations of Ankle joint

[Prof. Dr. Youssef Hussein Anatomy - YouTube](#)

Anterior relations

Tibialis anterior

Extensor Hallucis longus

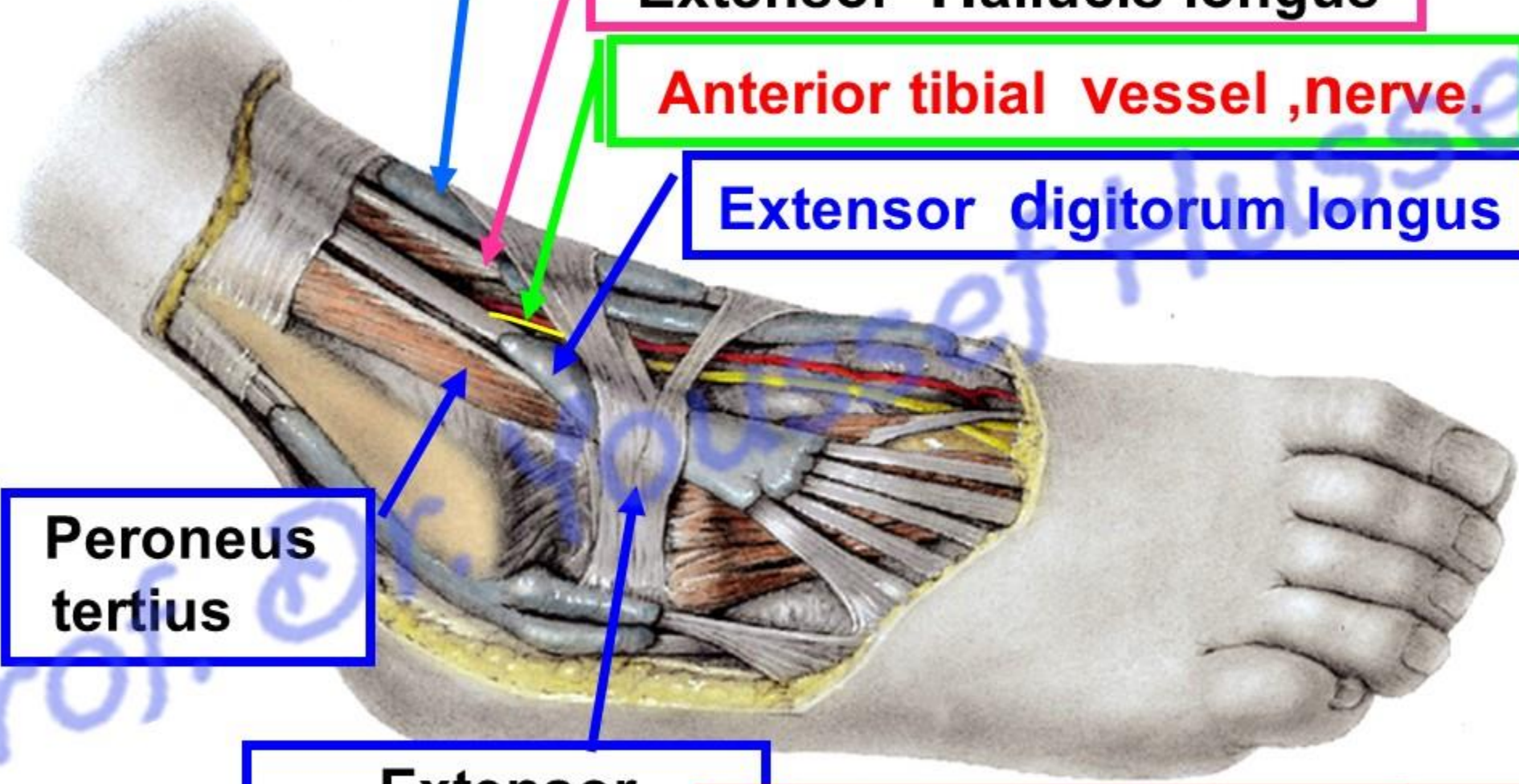
Anterior tibial vessel ,nerve.

Extensor digitorum longus

**Peroneus
tertius**

**Extensor
retinacula**

Prof. Dr. Youssef Hussein Anatomy - YouTube



Posteromedial relations

Flexor hallucis longus

Tibialis posterior

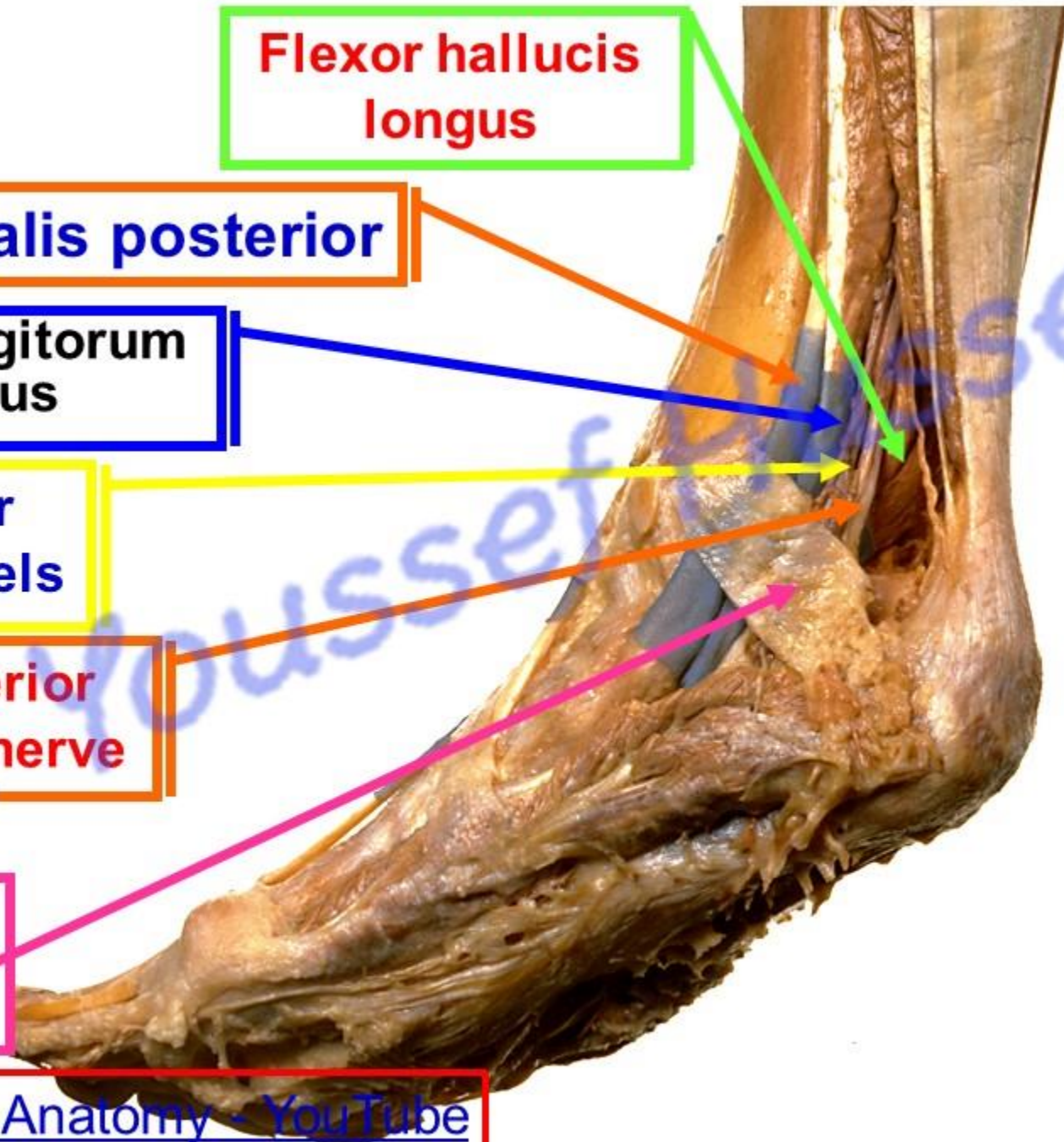
Flexor digitorum longus

Posterior tibial vessels

Posterior Tibial nerve

Flexor retinaculum

Prof. Dr. Youssef Hussein Anatomy - YouTube



Posterior relations

Lateral relations

tendon of Peroneus longus within its synovial sheath

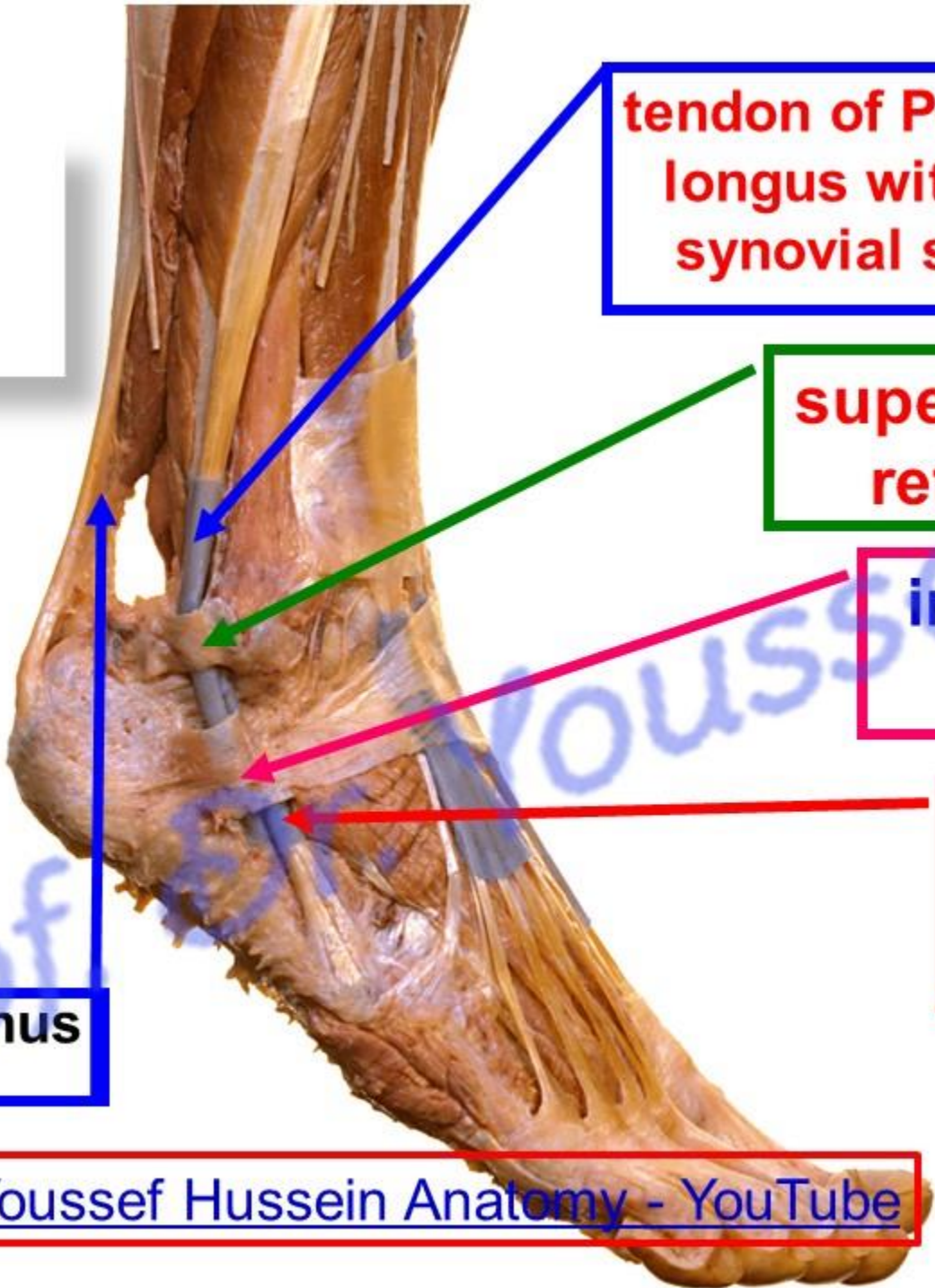
superior peroneal retinaculum

inferior peroneal retinaculum

tendon of Peroneus brevis within its synovial sheath

Tendocalcaenus

Prof. Dr. Youssef Hussein Anatomy - YouTube



- **Movements of the ankle joint**

A- Dorsiflexion: by the muscles of the anterior compartment of the leg
1- Tibialis anterior, 2- **Extensor** hallucis longus., 3- **Extensor** digitorum longus.,4- Peroneus tertius)

B- Plantar flexion by muscles of posterior and lateral compartments of leg (1- Tendocalcaneus Mainly. 2- Tibialis posterior. 3- **Flexor** Digitorum longus. 4- **Flexor** Hallucis longus) (Peroneus longus and Brevis)

- **Locking and unlocking of the ankle joint:**

a- Locking, during **dorsiflexion**, the **wide anterior** part of the trochlear surface of the talus is lodged into the **narrow posterior part** of the superior articular surface (socket).

b- Unlocking, during **plantar flexion**, the **narrow posterior** part of the trochlear surface is lodged in the **wide anterior part** of the superior articular surface. In this position, the foot can be moved slightly from side to side.

[Prof. Dr. Youssef Hussein Anatomy - YouTube](#)

dorsiflexion



Plantar flexion

❖ Blood supply

❖ Anastomoses around the ankle joint

- **Branches of the anterior tibial artery.**

- **Anterior medial malleolar** artery.
- **Anterior lateral malleolar** artery.

- **Branches of dorsalis pedis artery.**

- Medial **tarsal** artery.
- Lateral **tarsal** artery.

[Prof. Dr. Youssef Hussein Anatomy - YouTube](#)

- **Branches of posterior tibial artery.**

- Posterior medial malleolar branches.
- Medial Calcanean branches

- **Branches of peroneal artery.**

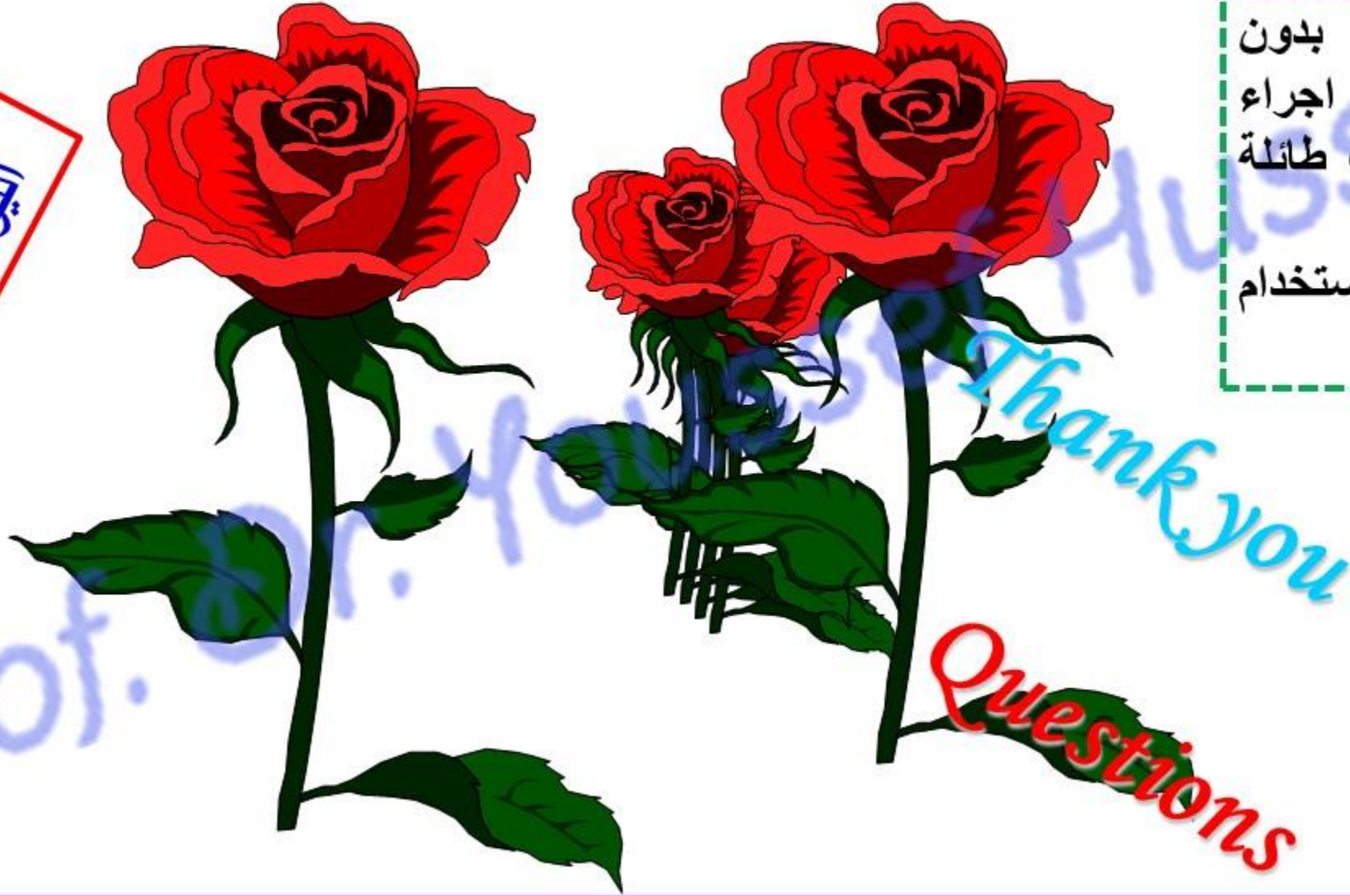
- Perforating branches.
- Lateral Calcanean branches.

❖ **Nerve supply:** from the anterior and posterior tibial nerves.

https://www.youtube.com/channel/UCVSNqbibj9UWYaJdd_cn0PQ

يُمنع أخذ السلايدات بدون
إذن المحرر و اي اجراء
يخالف ذلك يقع تحت طائلة
المسؤولية القانونية
جميع المعلومات للاستخدام
التعليمي فقط

اليوتيوب د. يوسف حسين



<https://www.youtube.com/@ProfDrYoussefHusseinAnatomy/playlists>