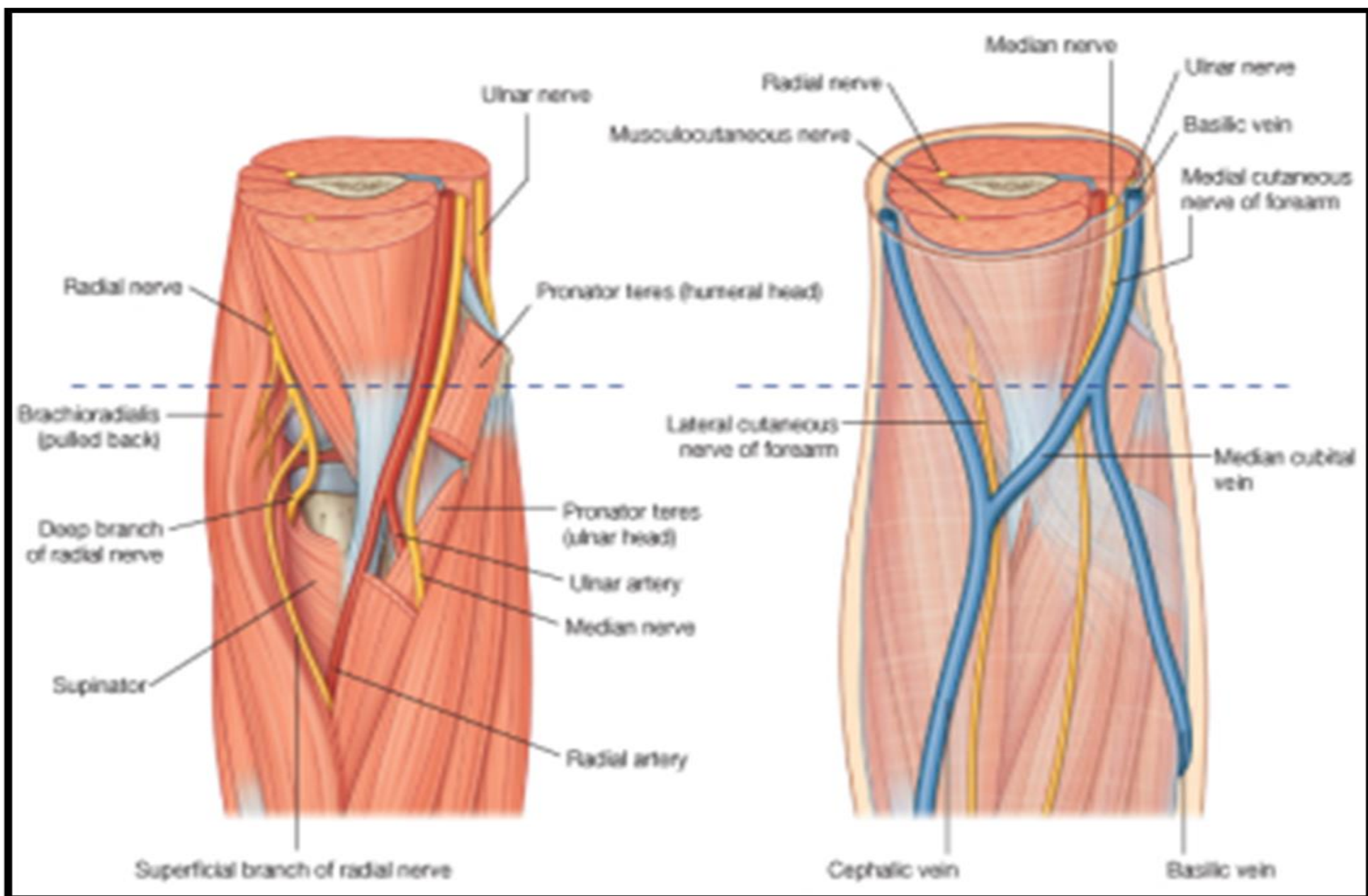
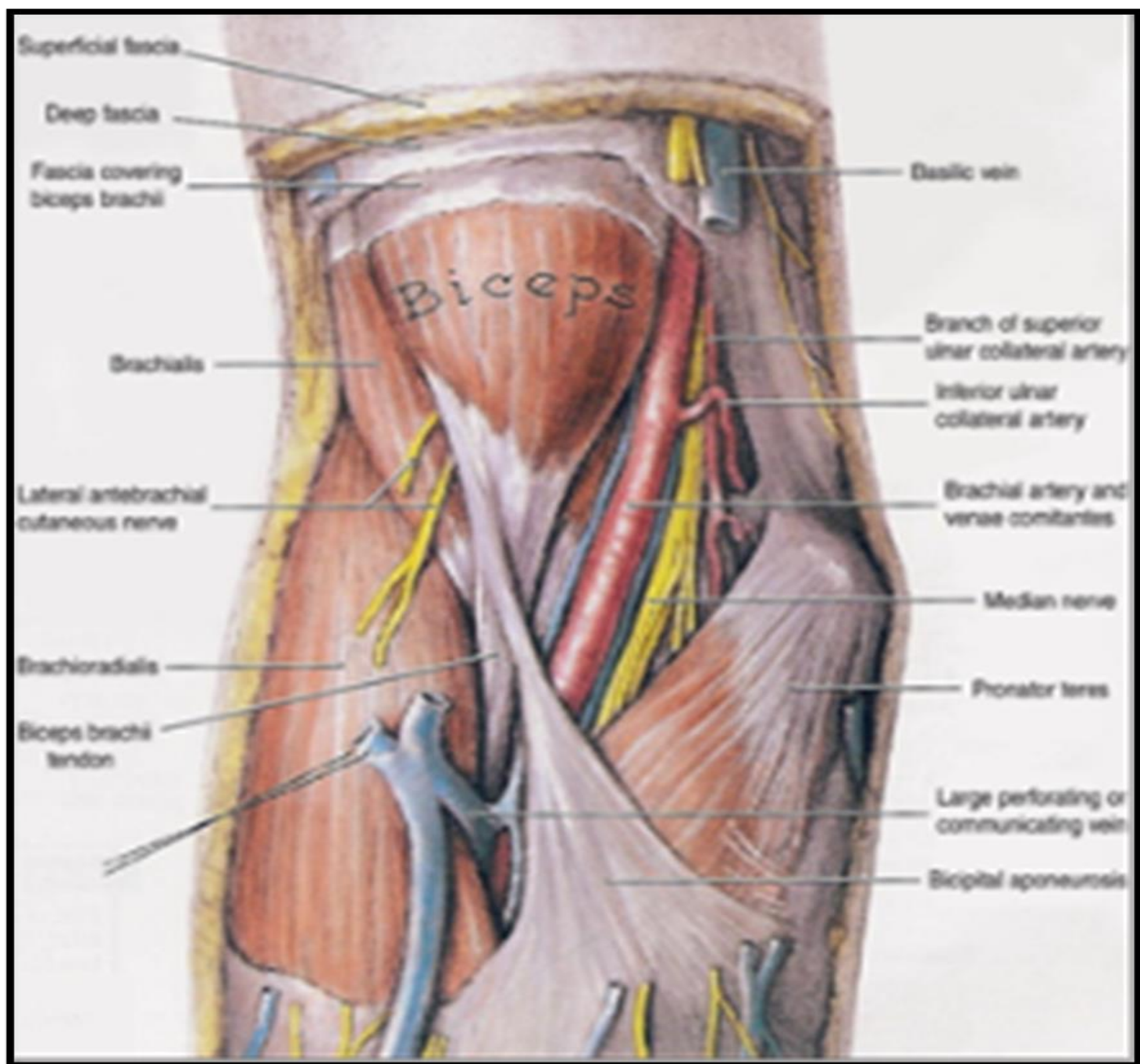


LAB 5

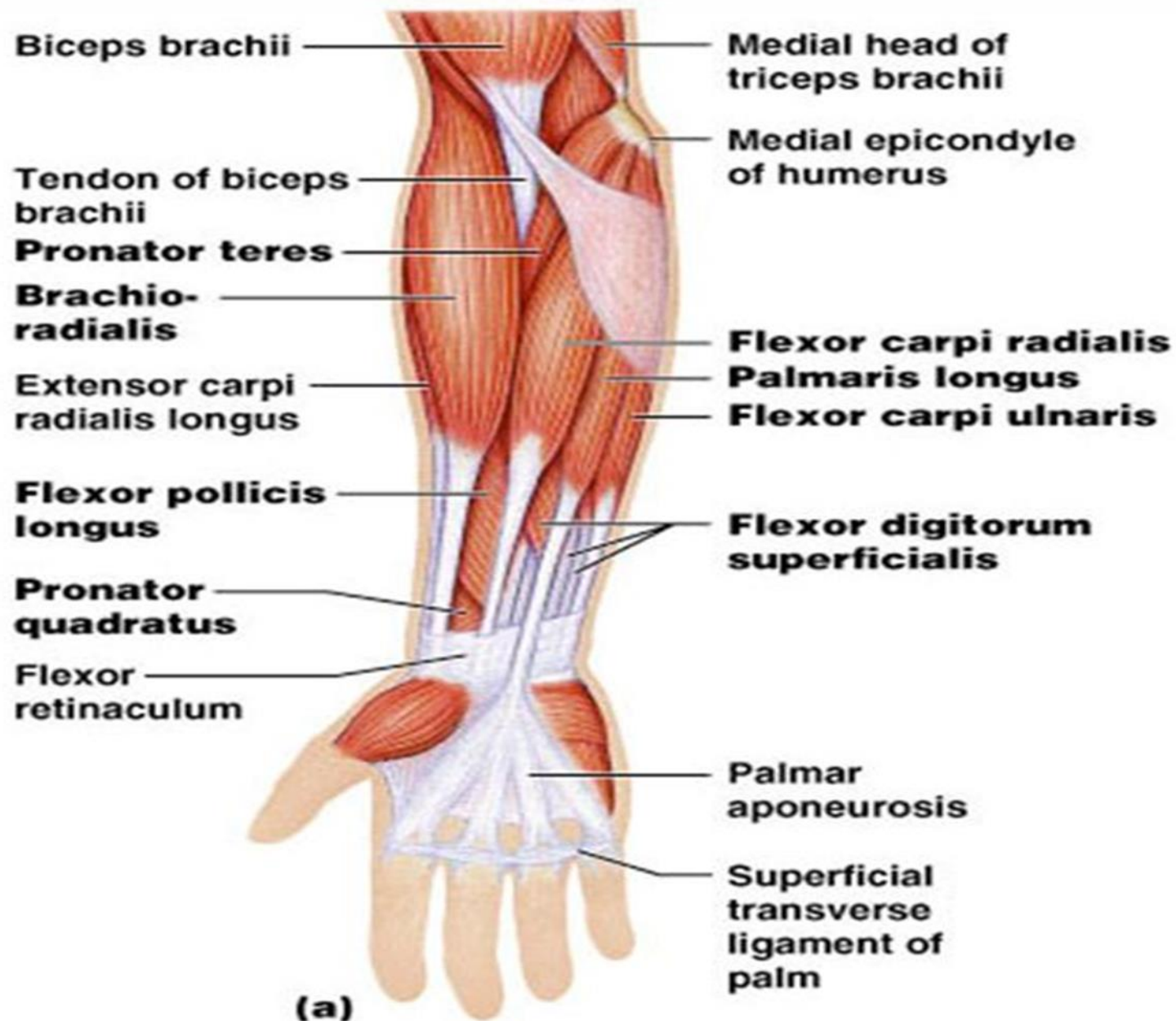
DR. DALIA BIRAM

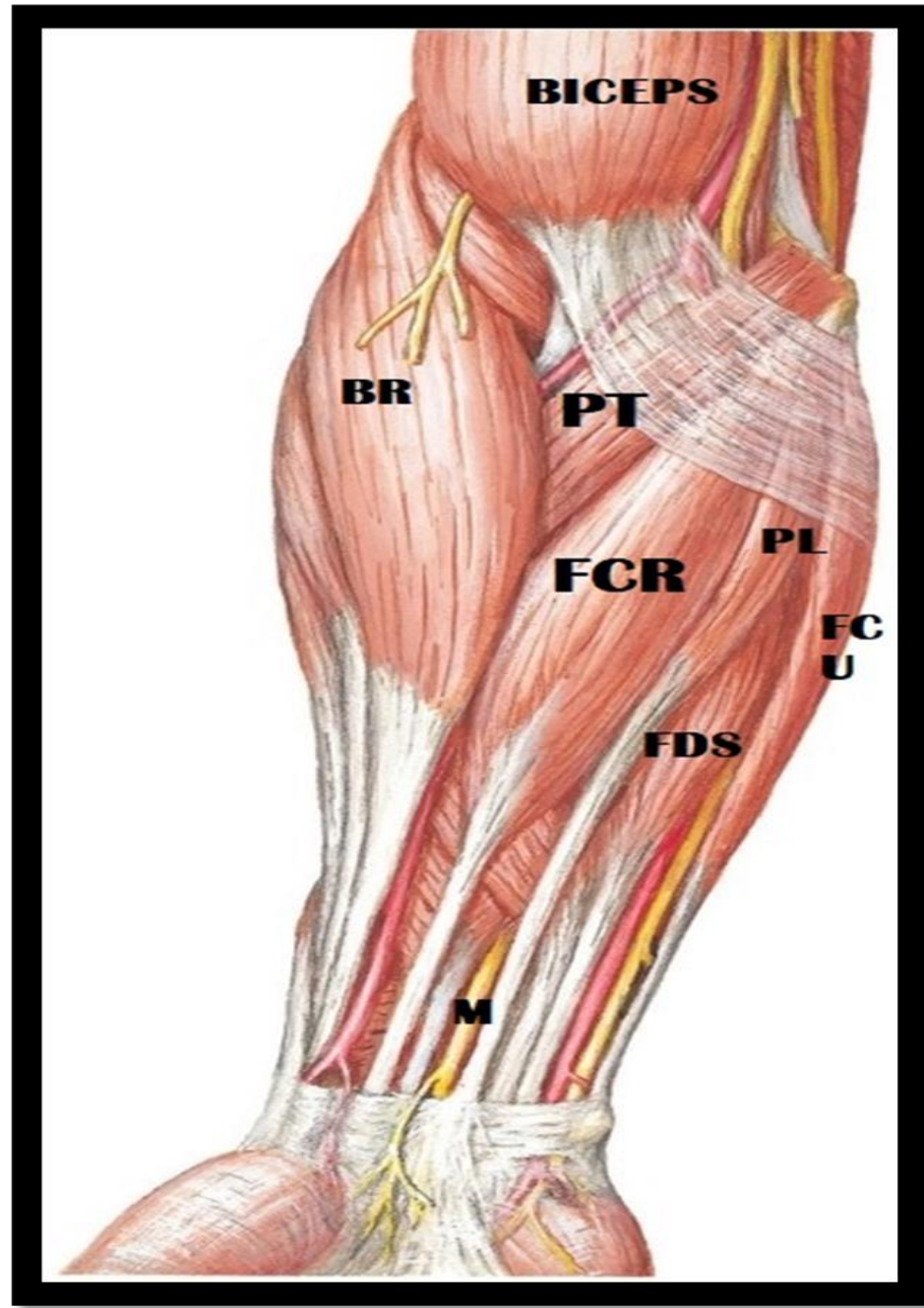


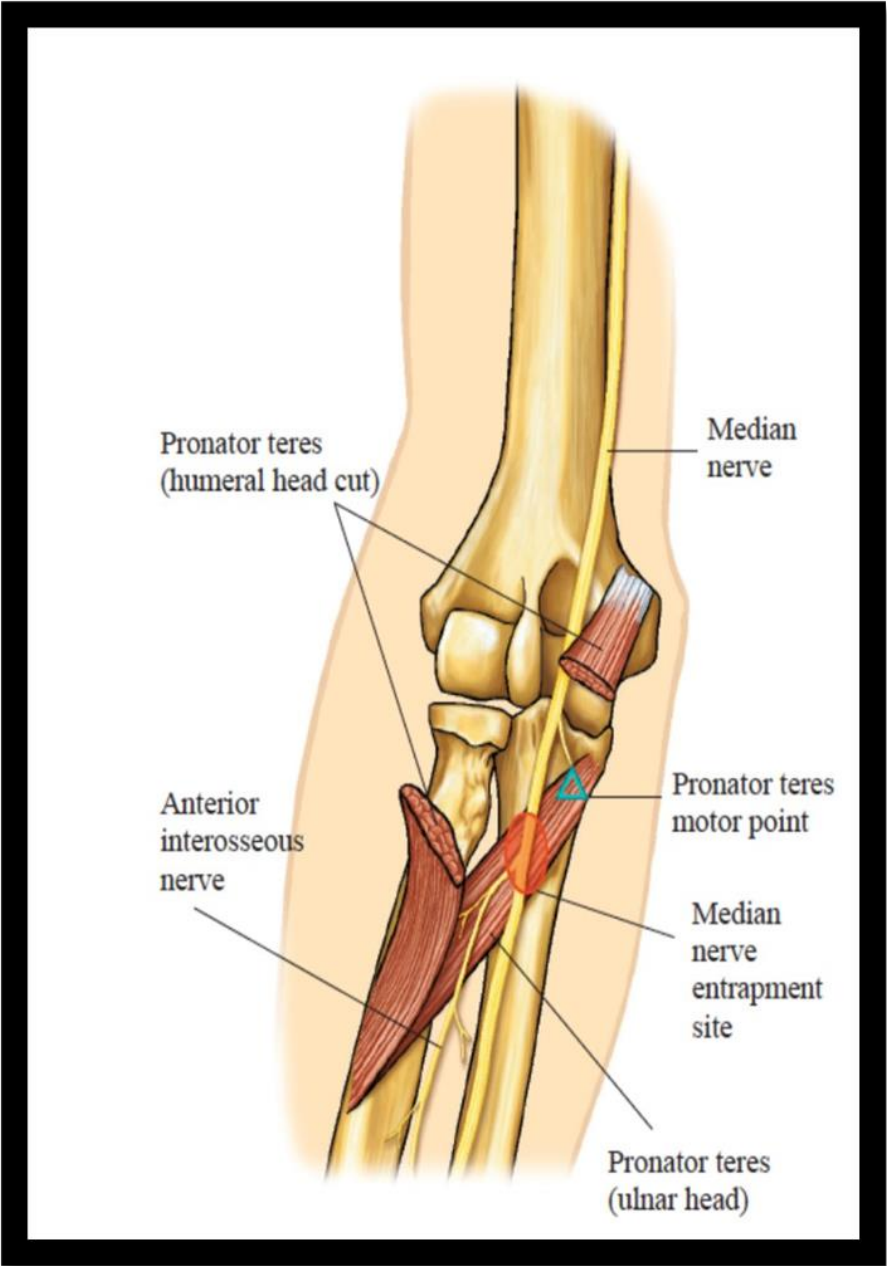


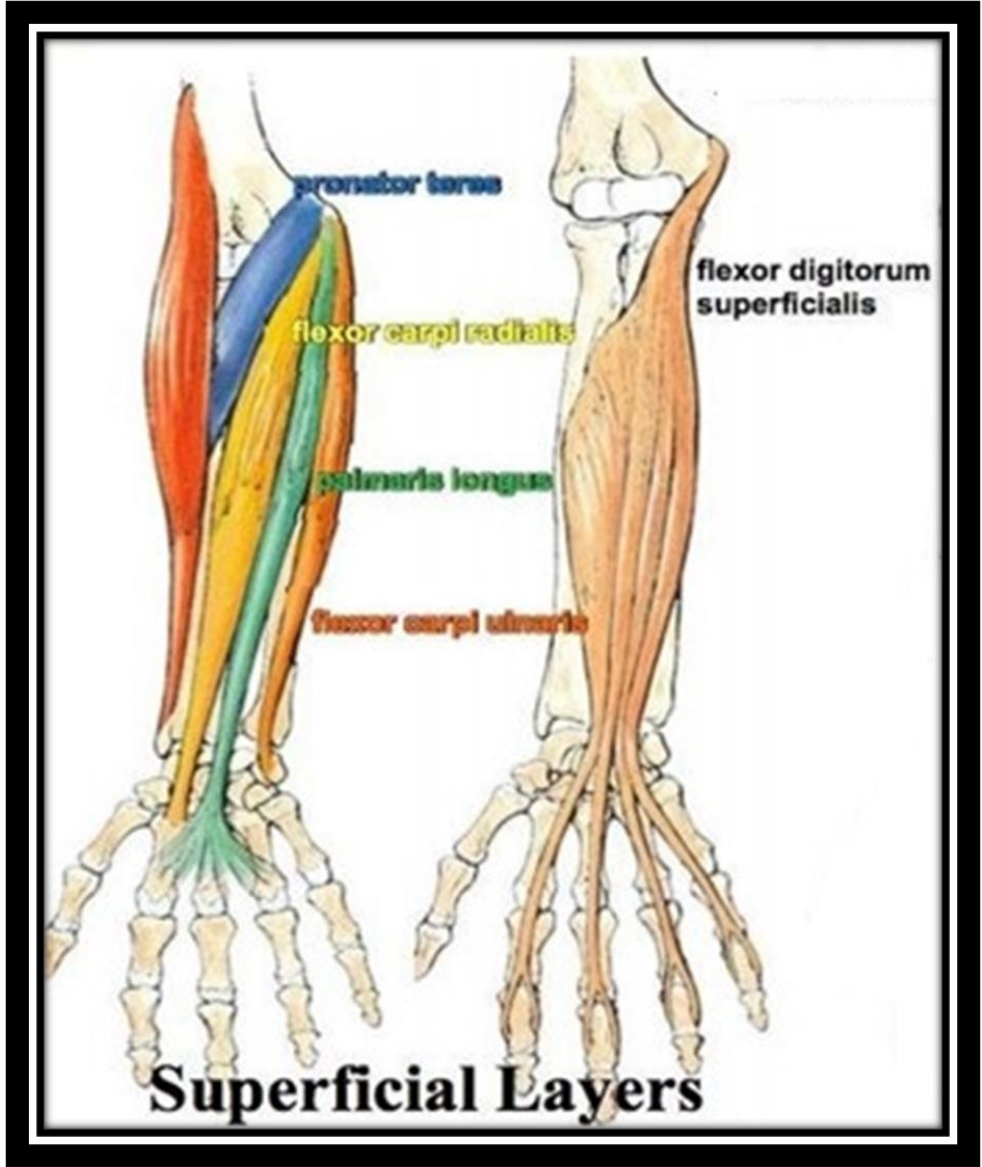
Muscles of the Forearm: Anterior Compartment

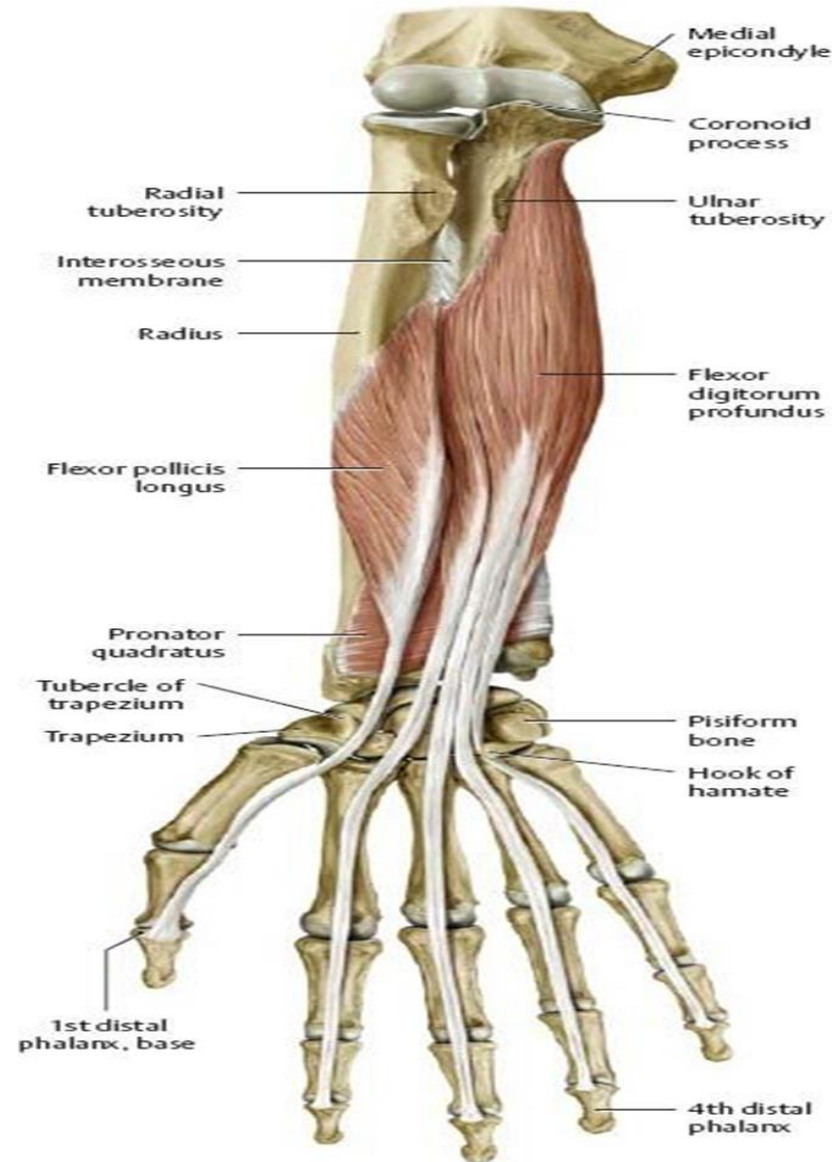
- These muscles are primarily flexors of the wrist and fingers

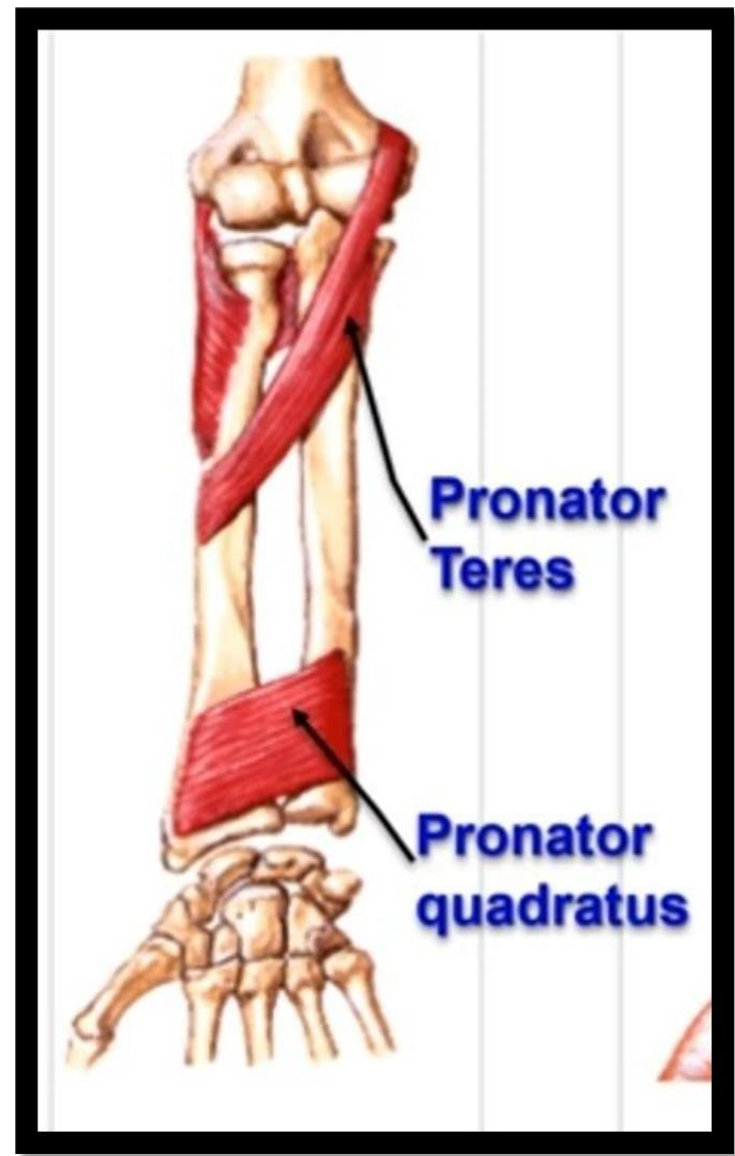
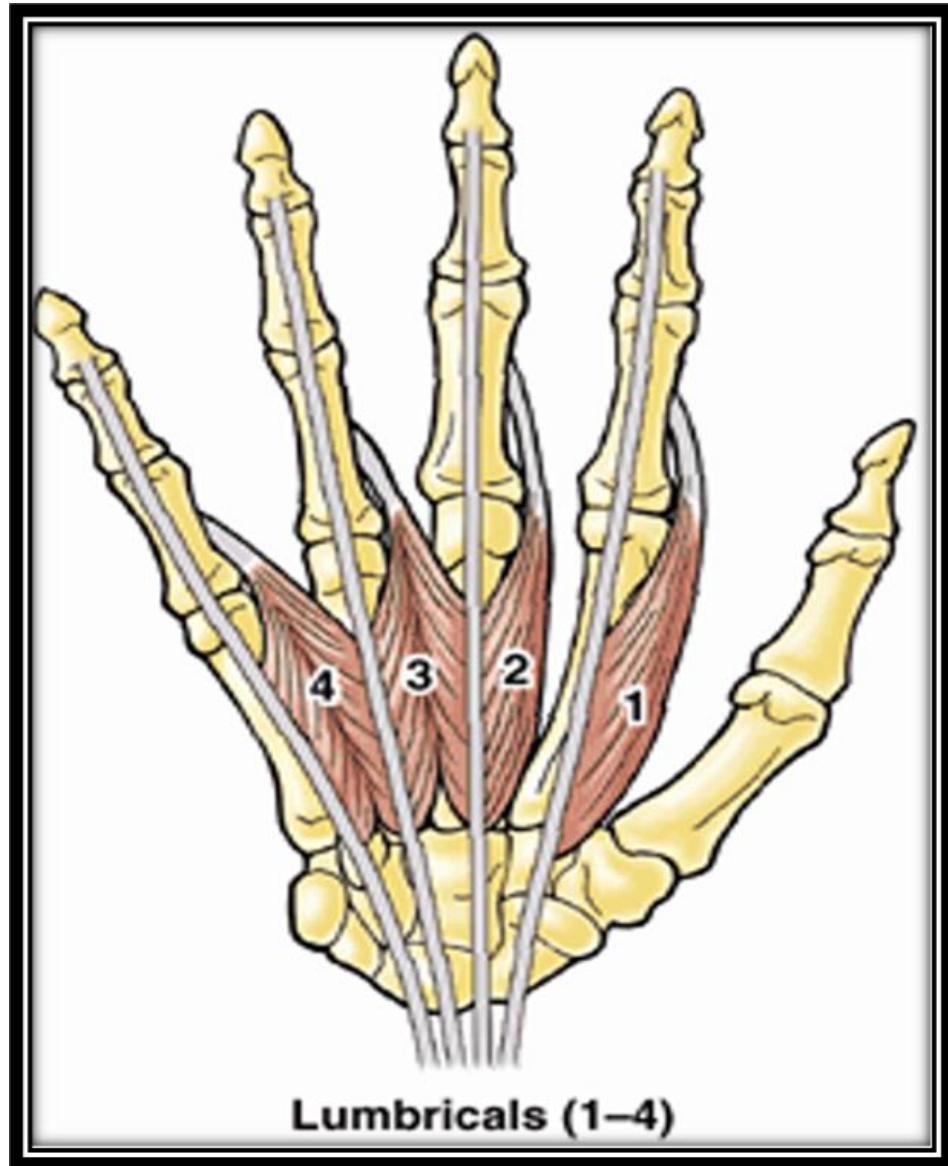










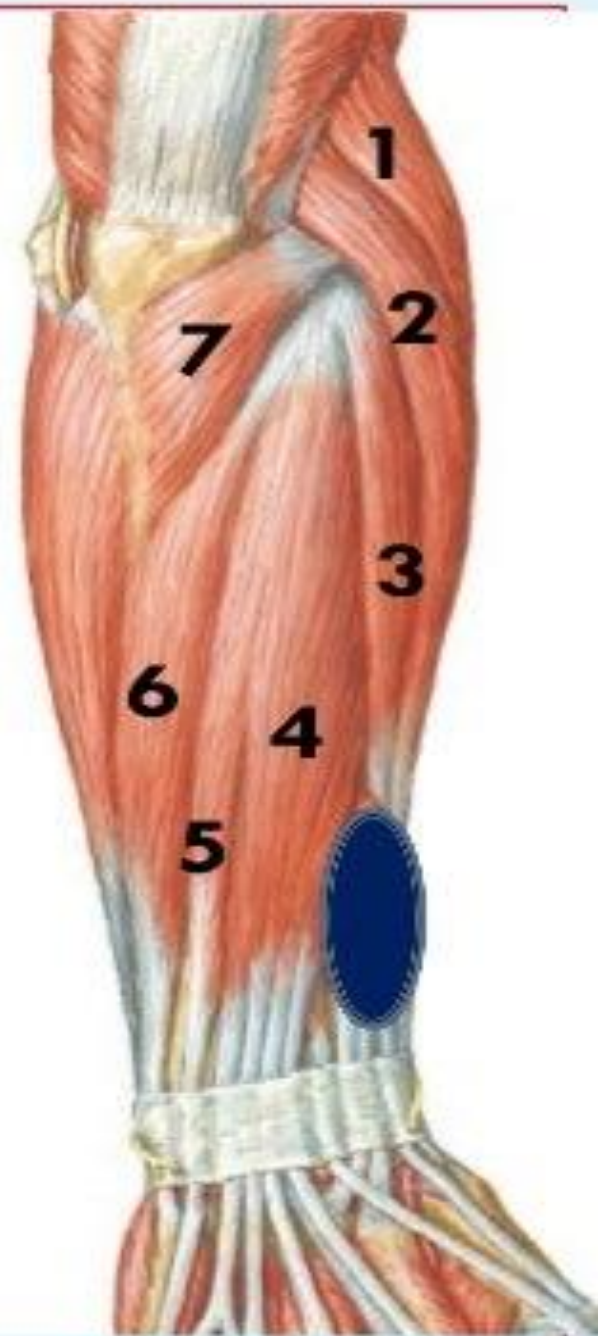


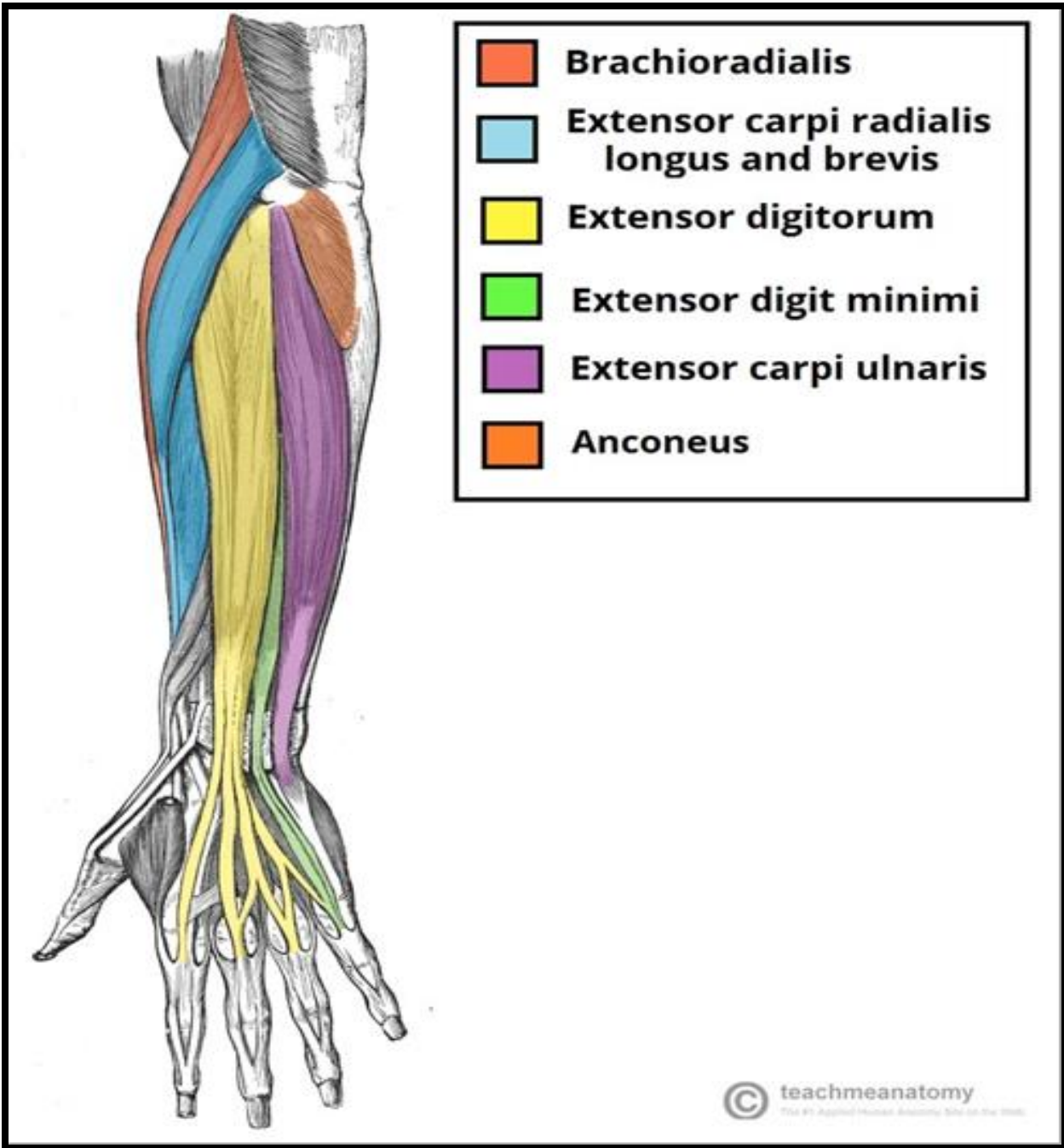
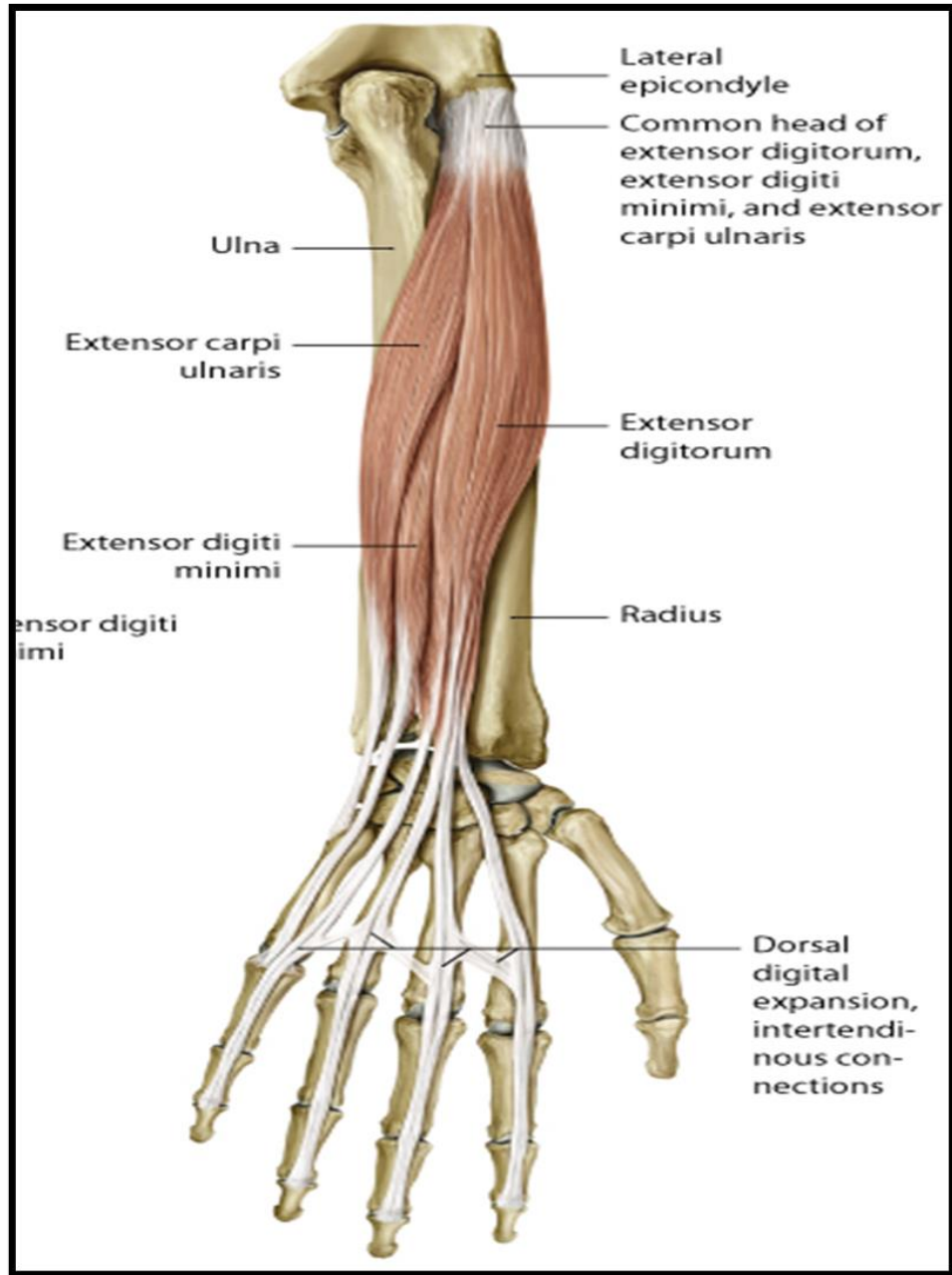
Muscles of back of forearm

Superficial group (7)

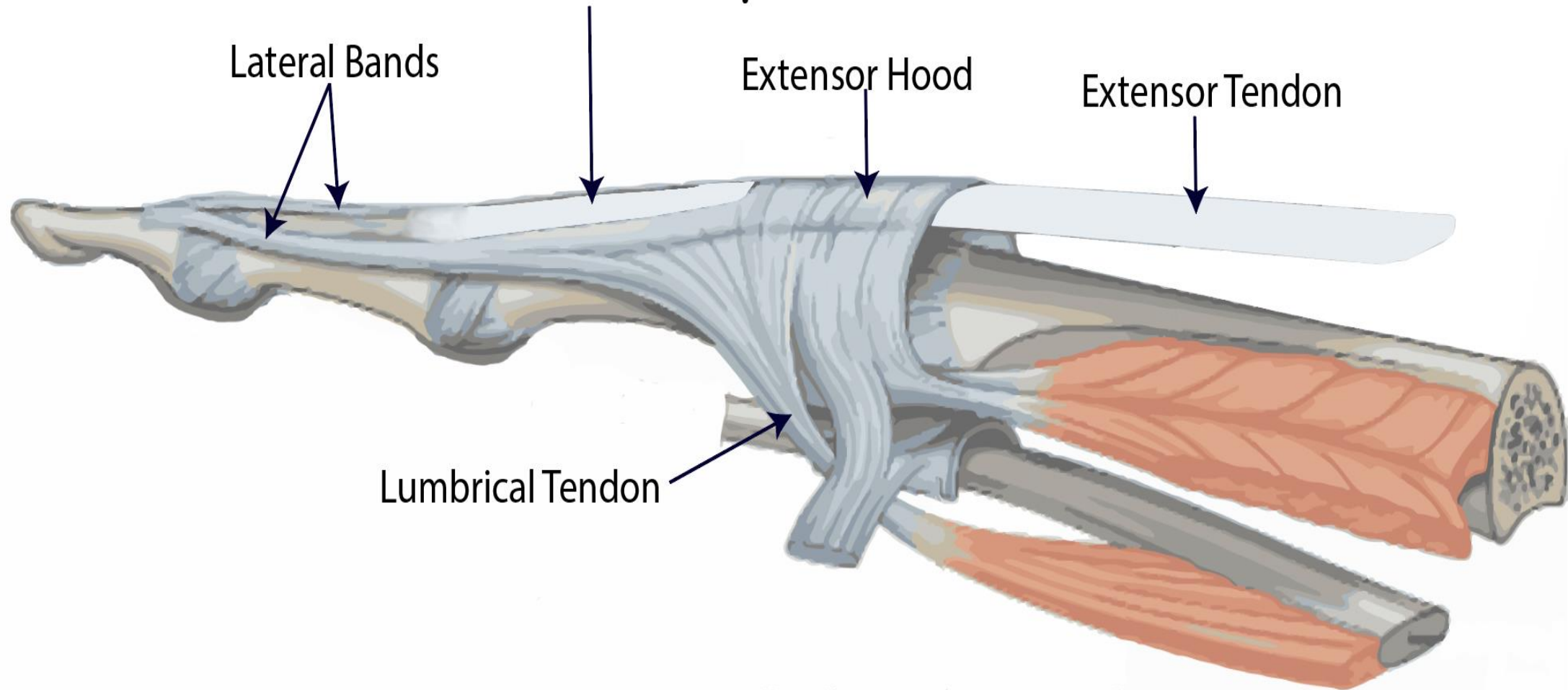
1. Brachioradialis
2. Extensor carpi radialis longus
3. Extensor carpi radialis brevis
4. Extensor digitorum
5. Extensor digiti minimi
6. Extensor carpi ulnaris
7. anconeus

Deep group (5)





Central Slip

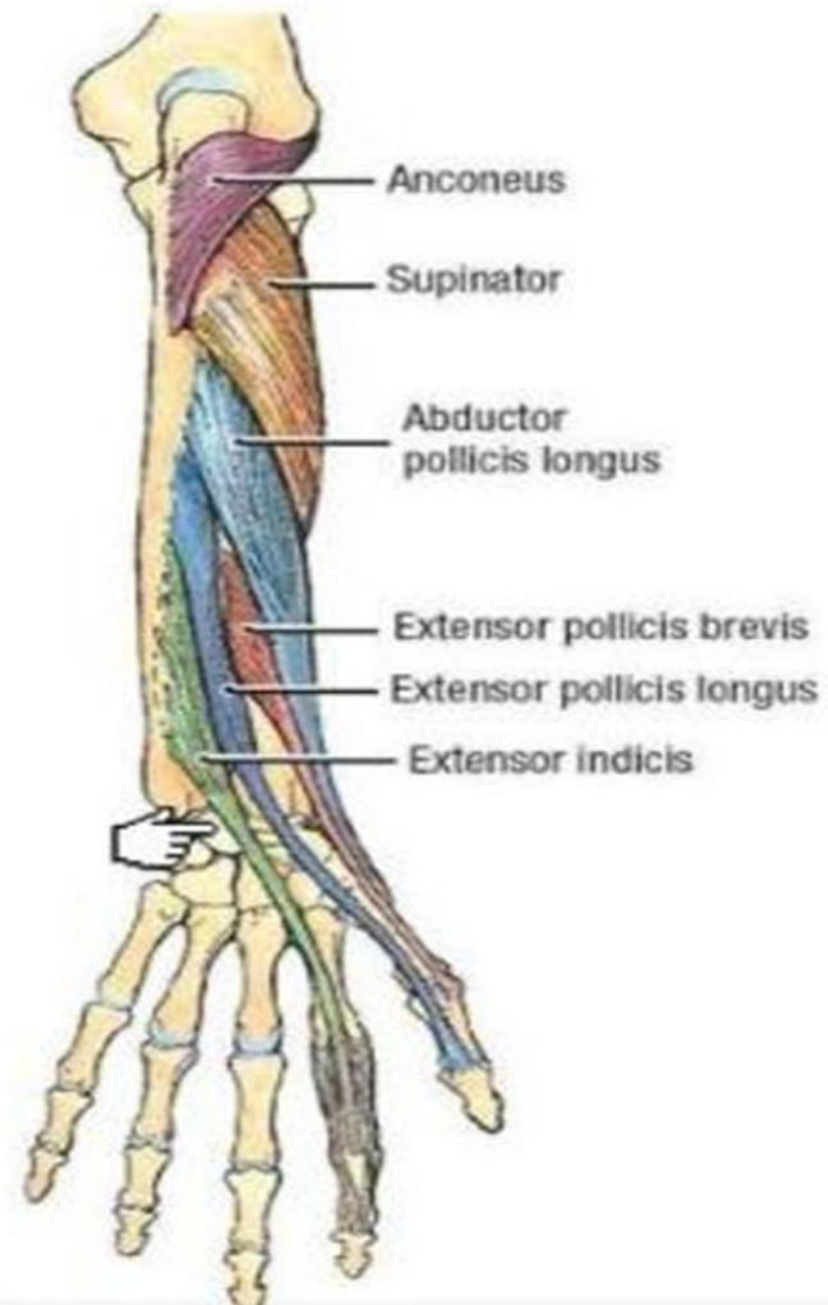
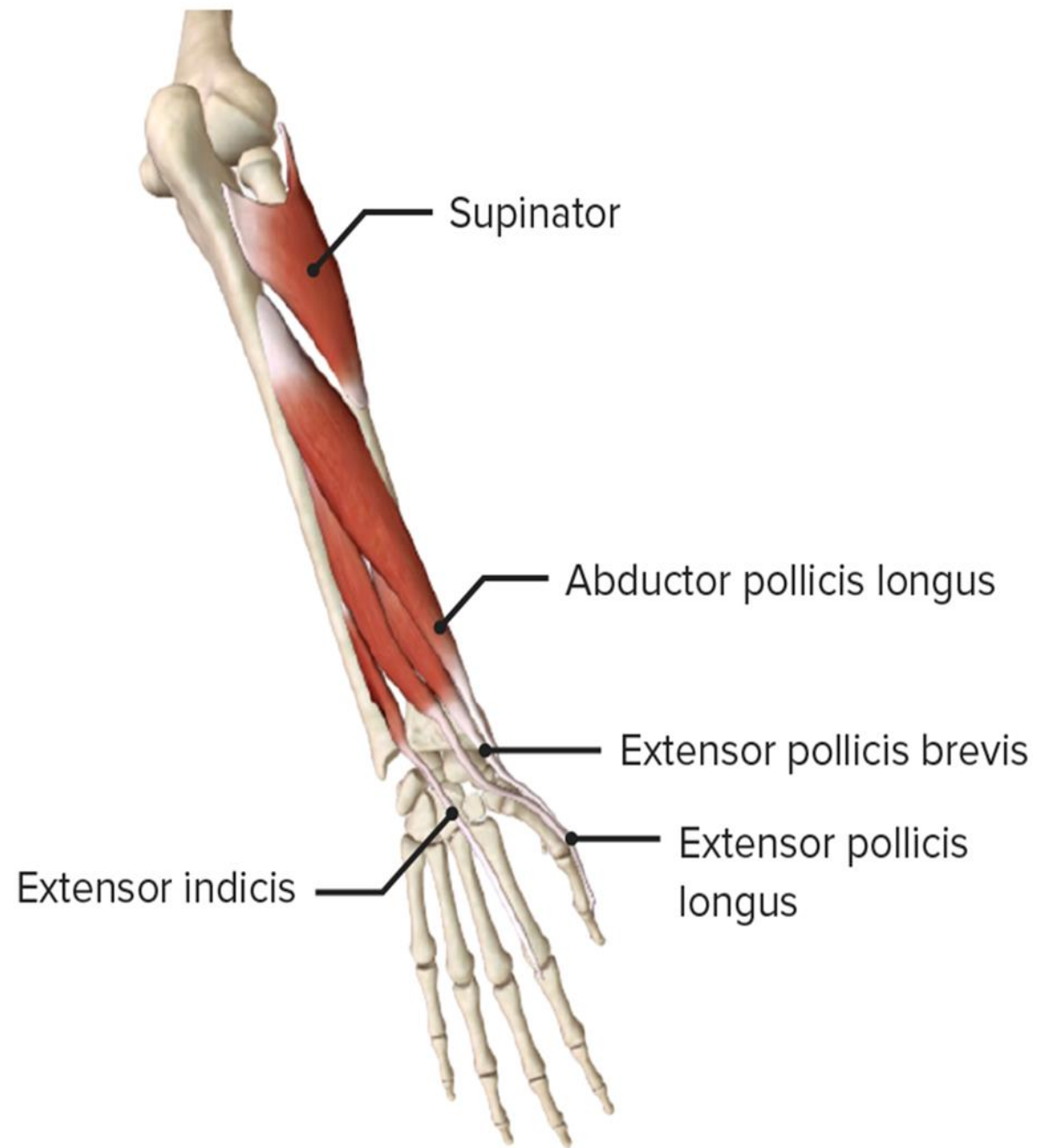


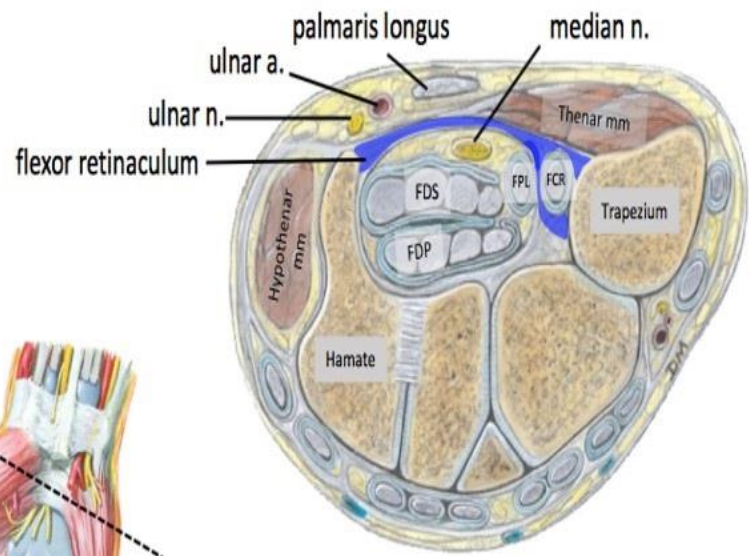
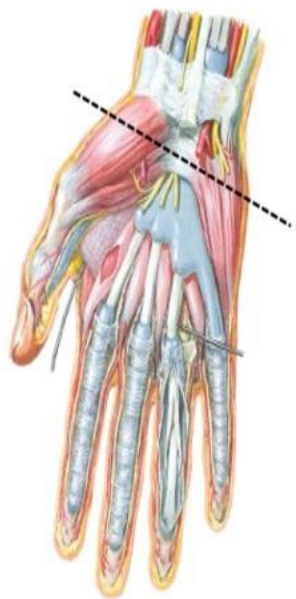
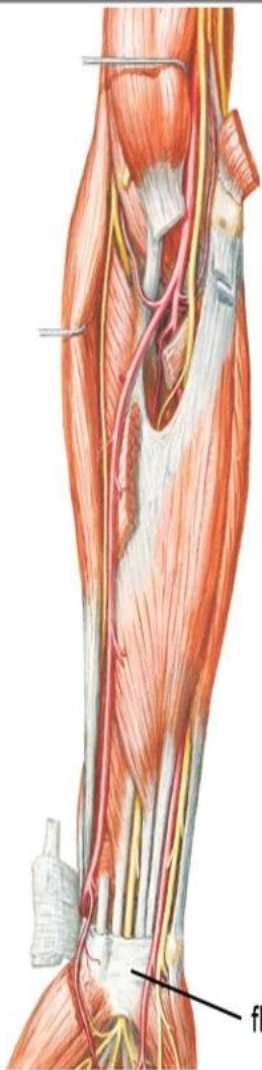
Lateral Bands

Extensor Hood

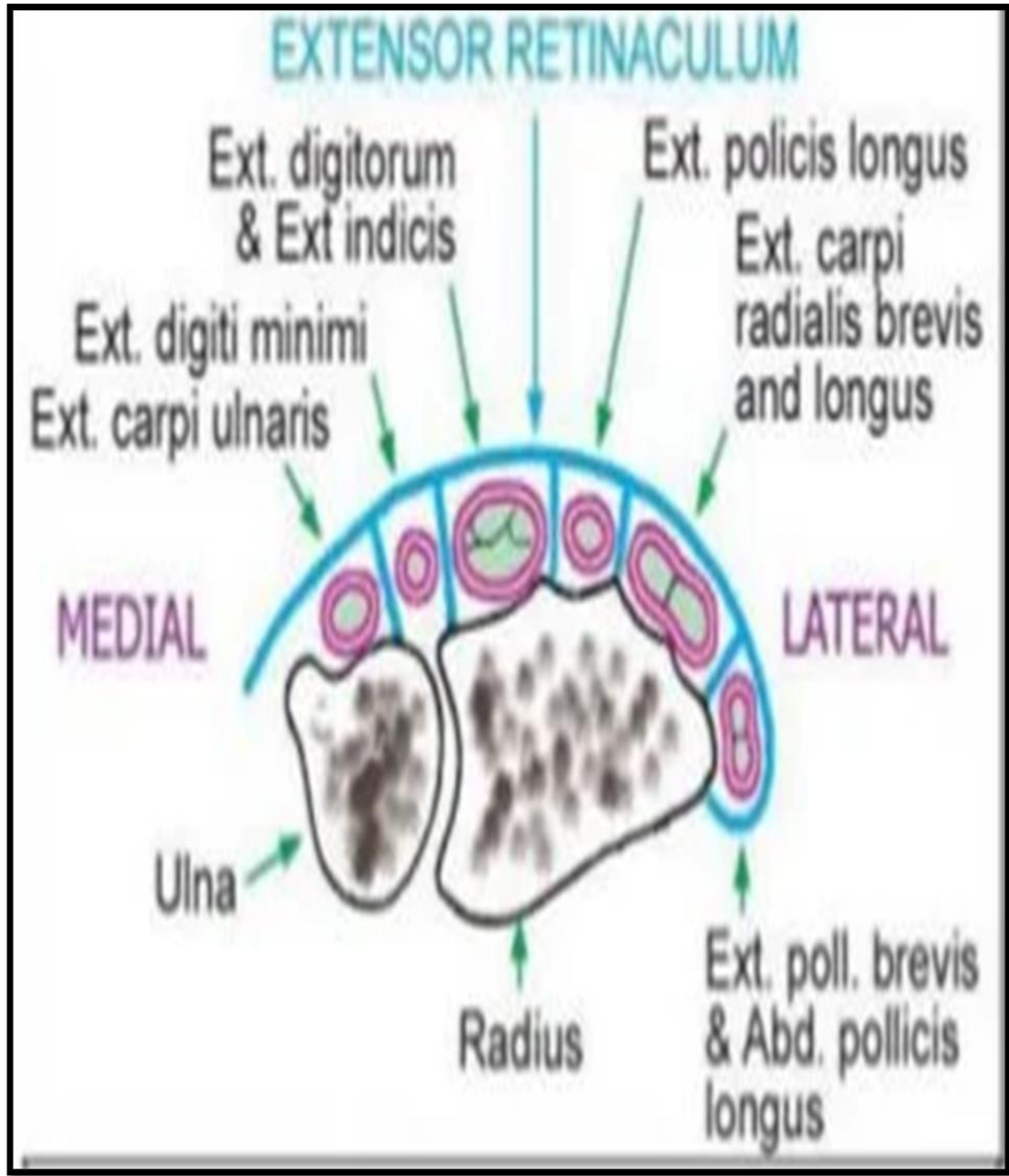
Extensor Tendon

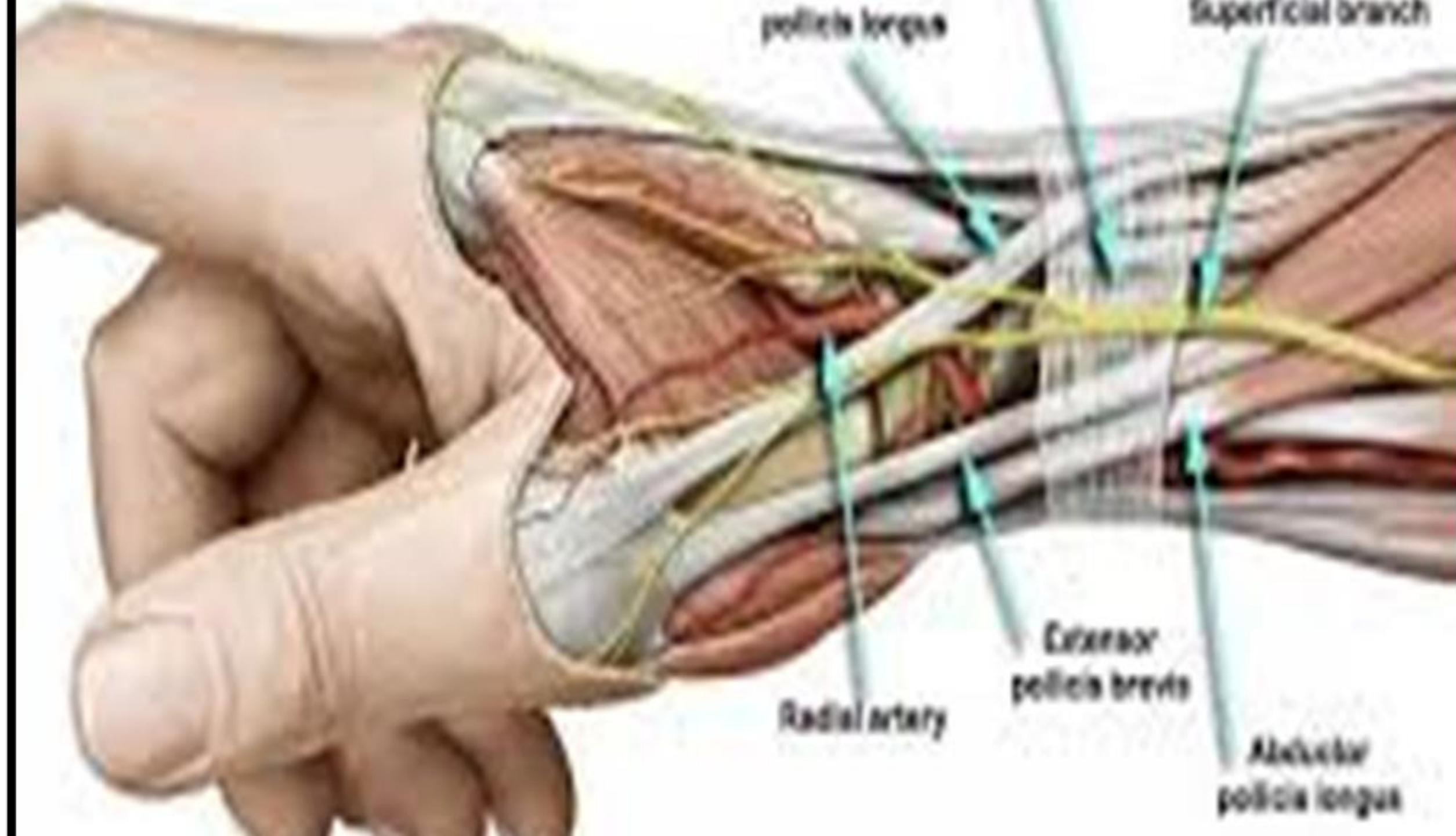
Lumbrical Tendon





Flexor retinaculum: converts the carpal arch (concavity) into a tunnel – passageway for structures into the hand





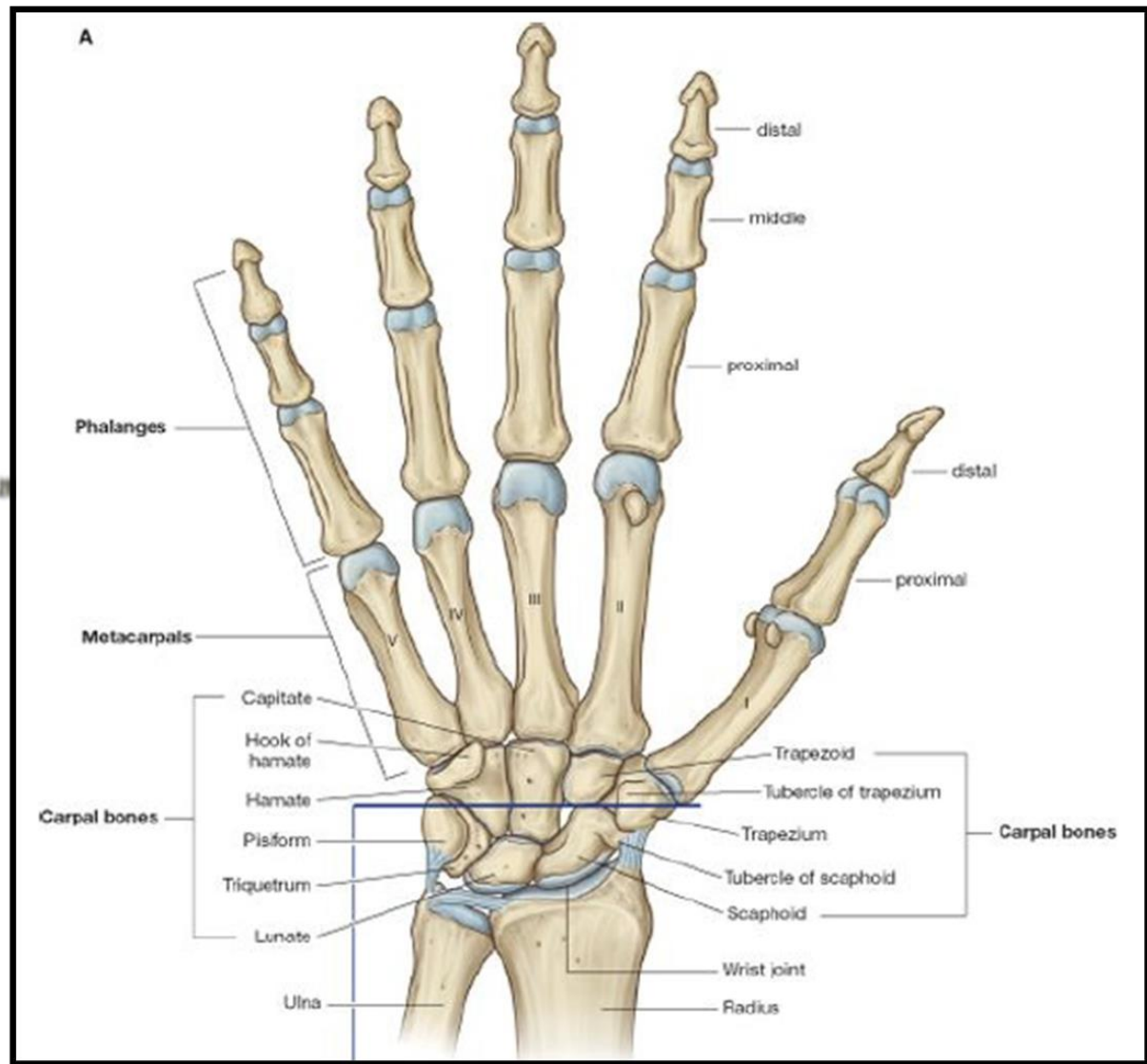
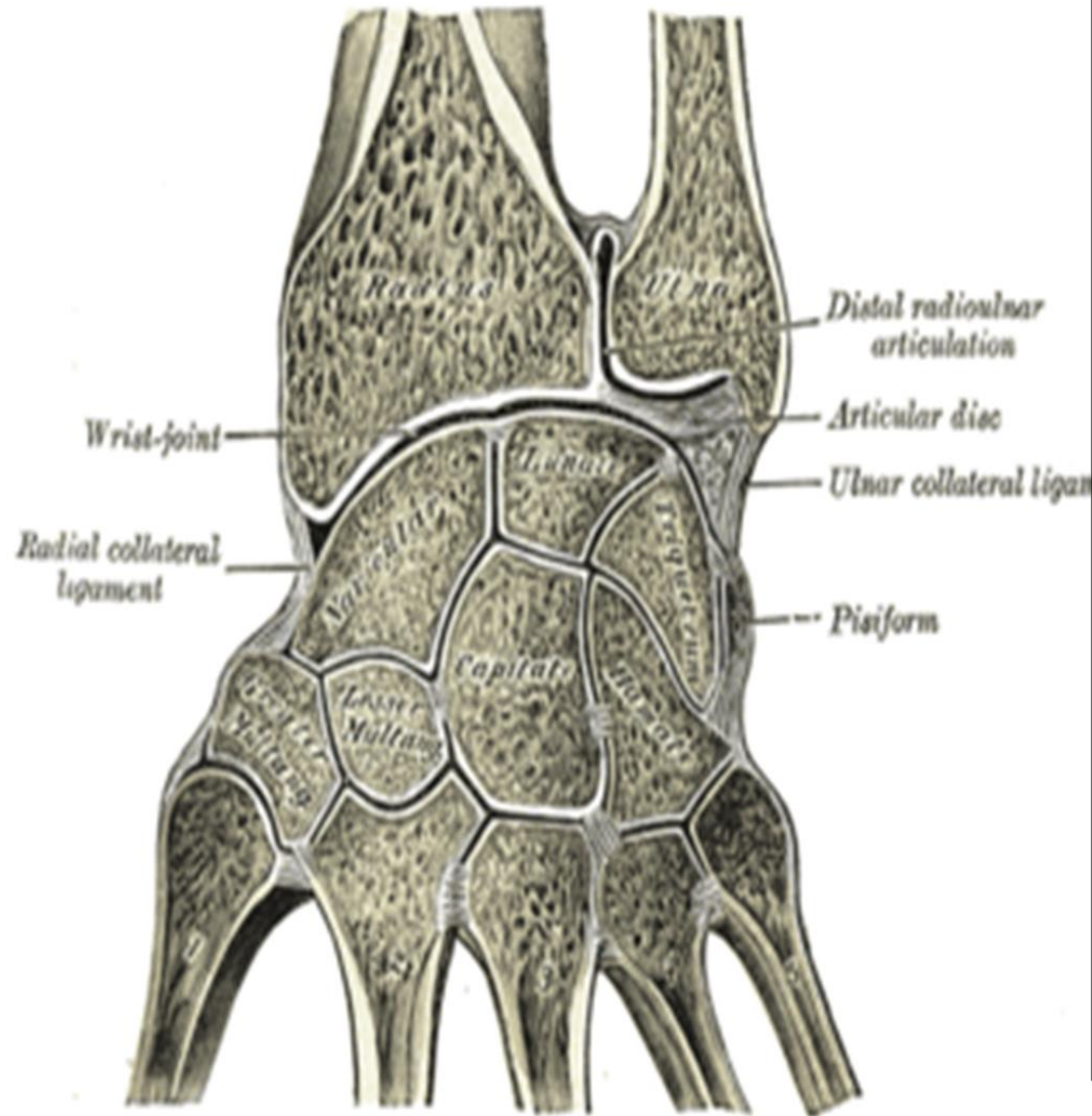
pollicis longus

superficial branch

Radial artery

Extensor pollicis brevis

Abductor pollicis longus



Flexor retinaculum removed: palmar view

Metacarpal bones

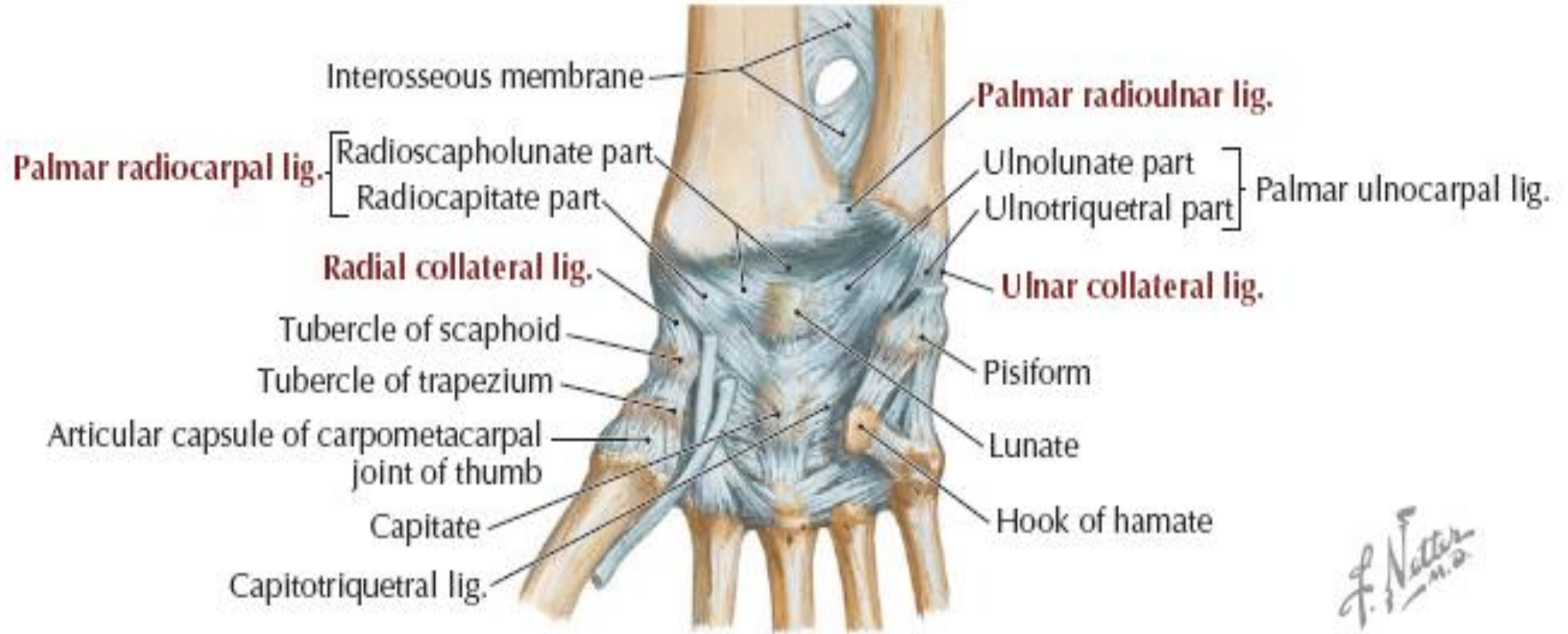
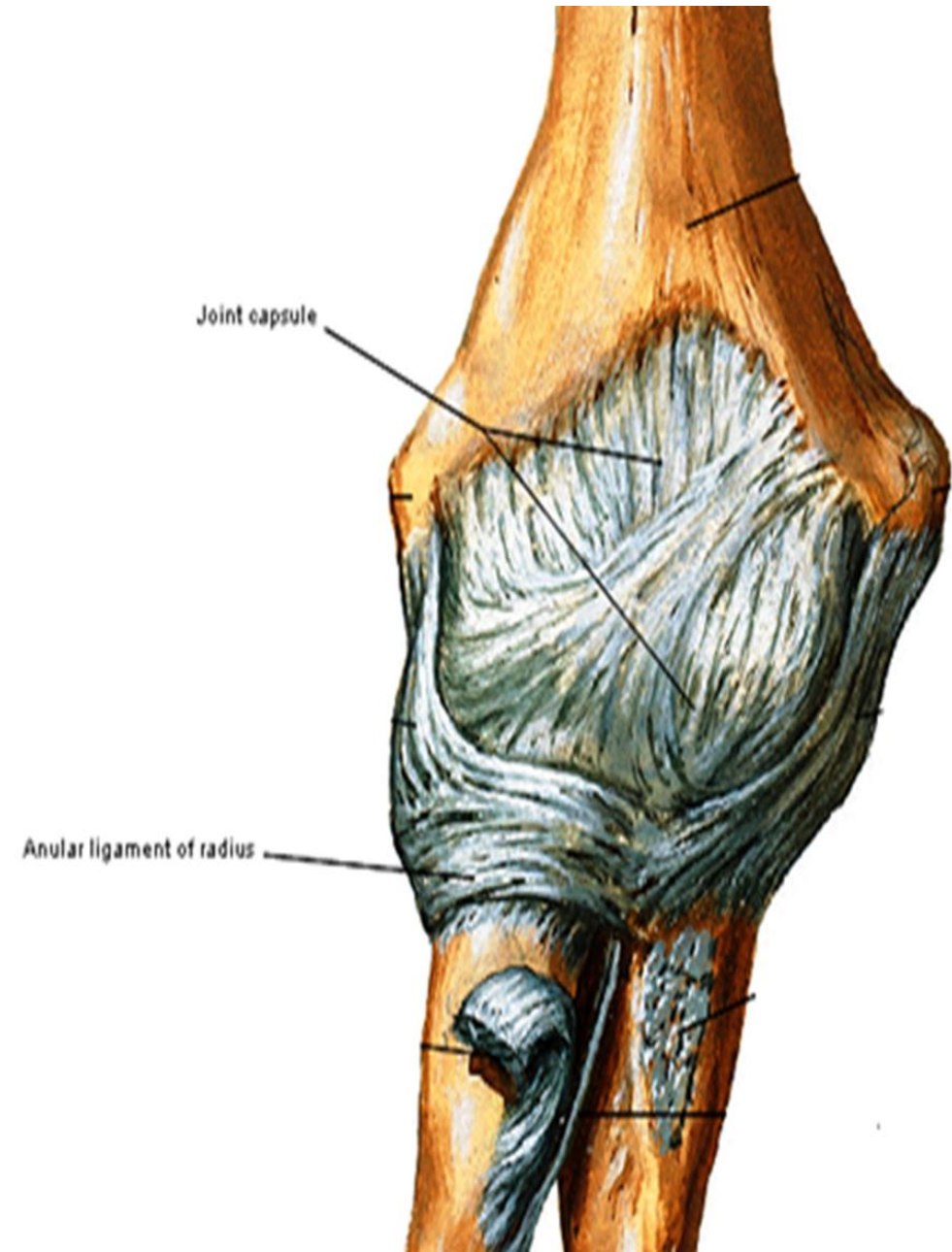
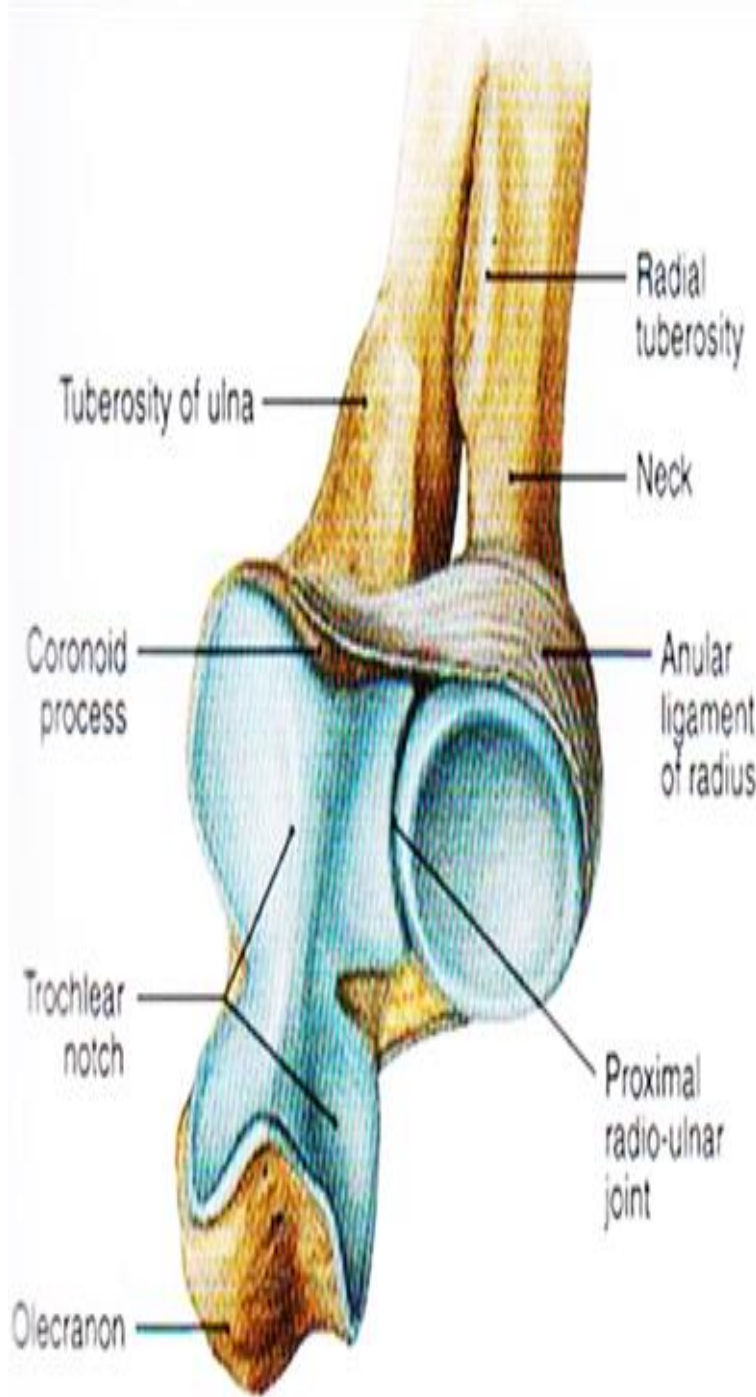


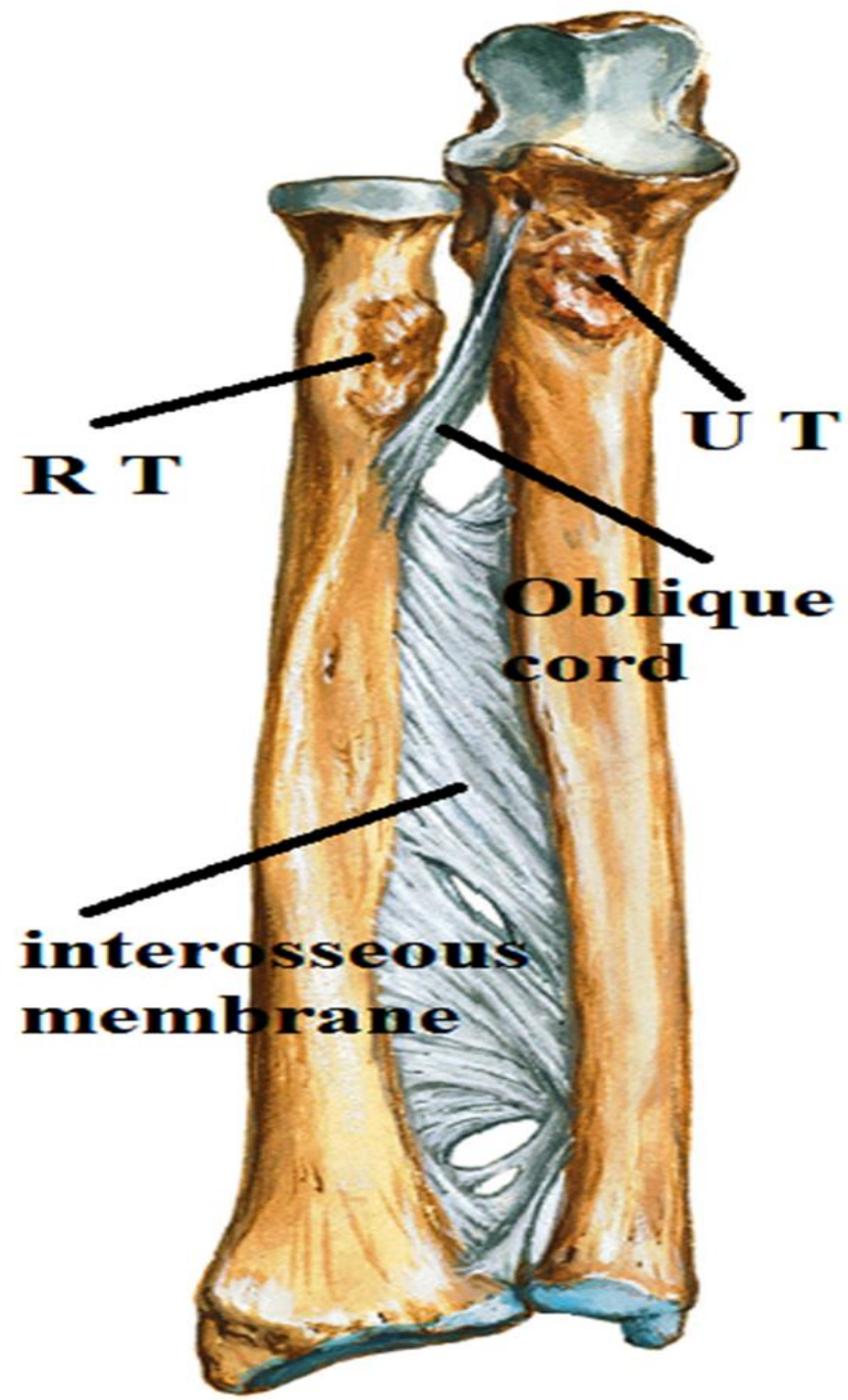
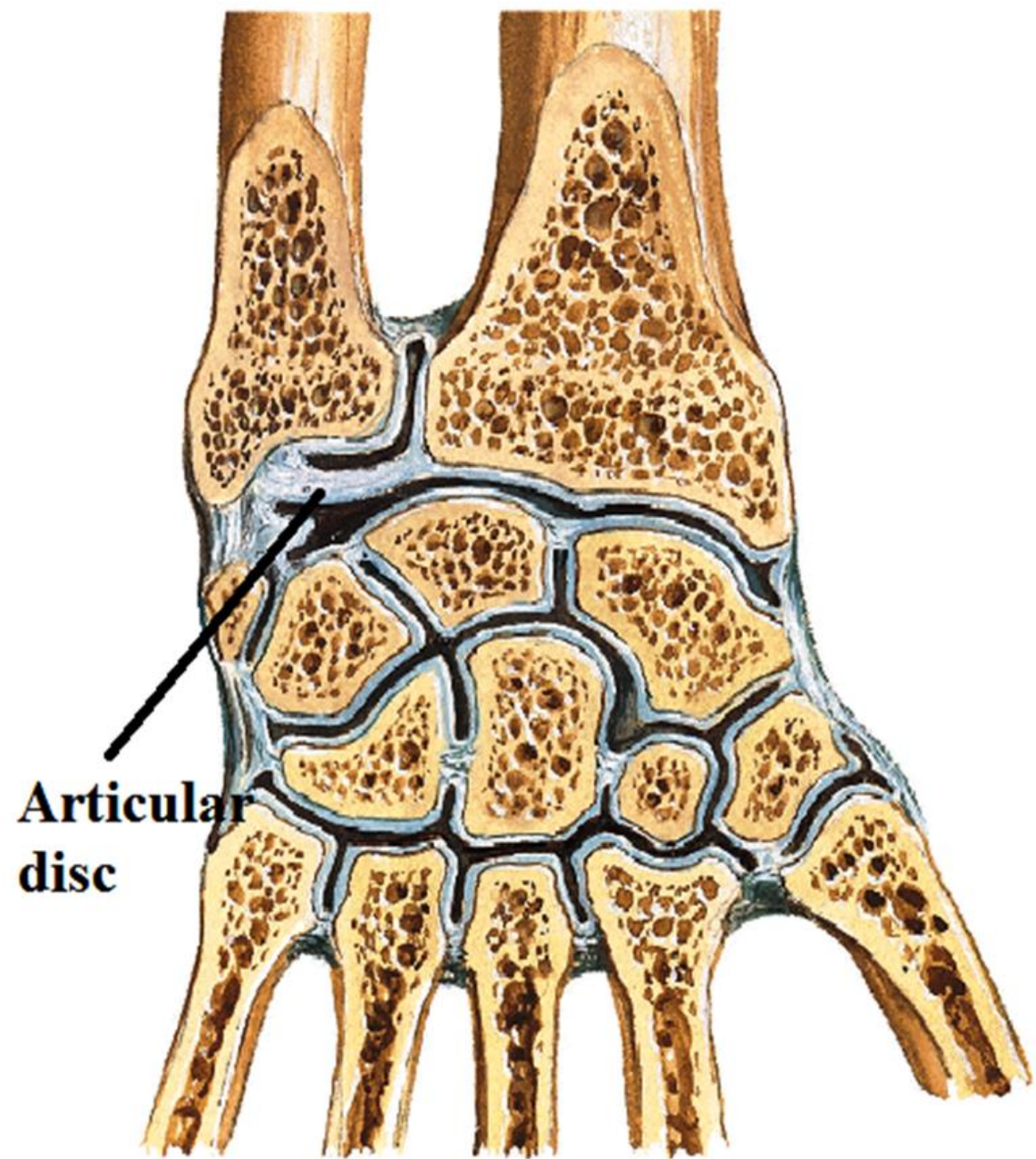
FIGURE 7-24 Wrist Joint Ligaments

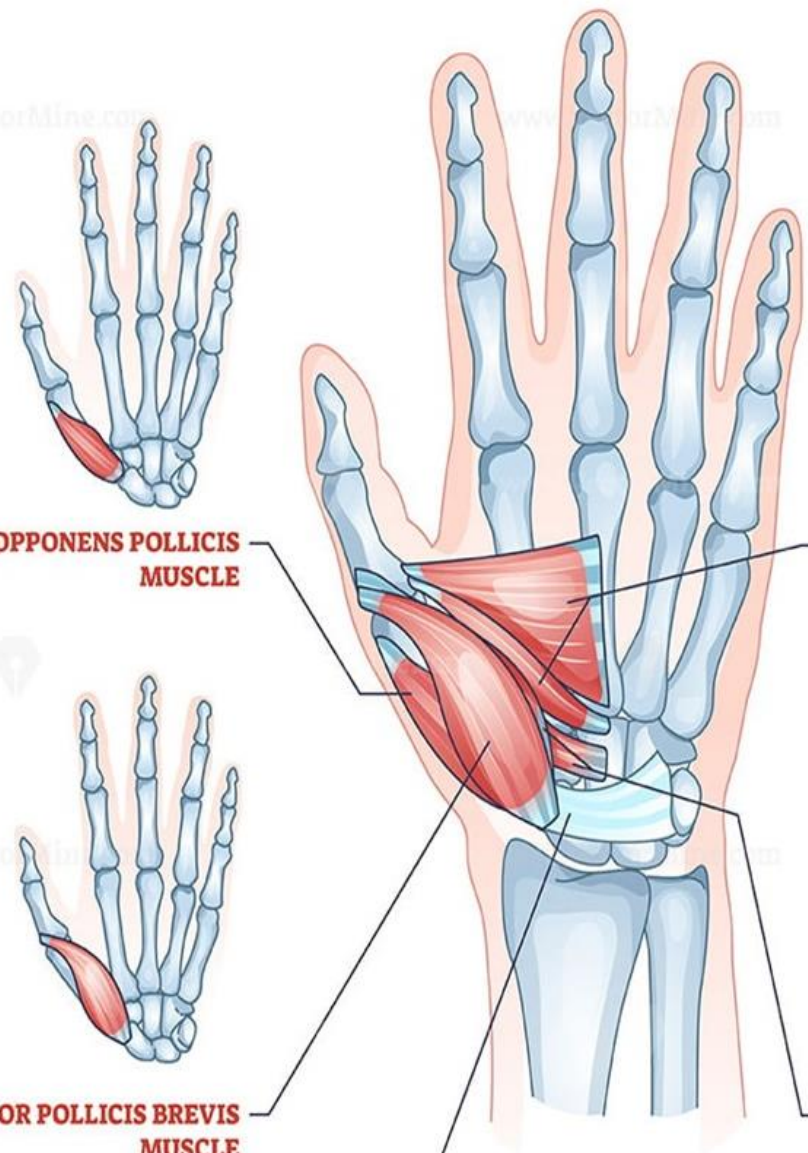
F. Netter M.D.

LAB 5

DR. ABULMATTY ELSAED



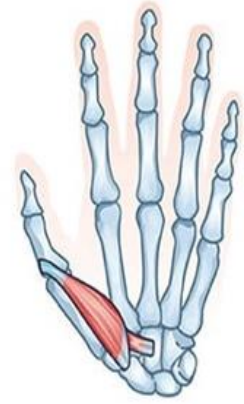




OPPONENS POLLICIS MUSCLE



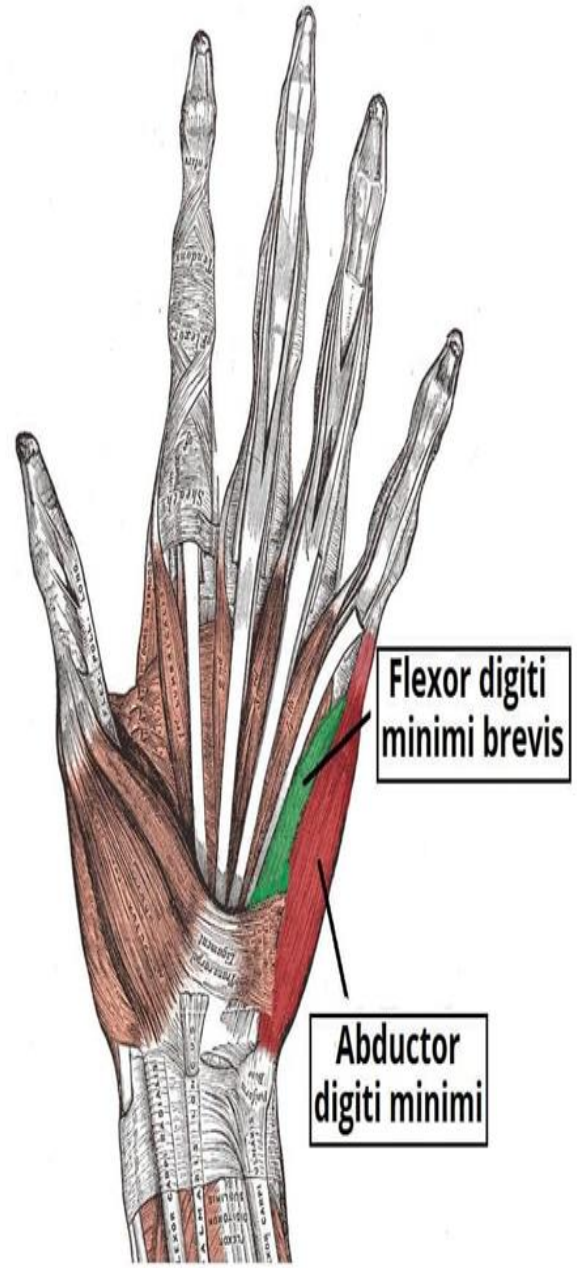
ADDUCTOR POLLICIS MUSCLE



FLEXOR POLLICIS BREVIS MUSCLE

FLEXOR RETINACULUM

LEFT HAND ANTERIOR VIEW



Flexor digiti minimi brevis

Abductor digiti minimi



Opponens digiti minimi

palmaris brevis

