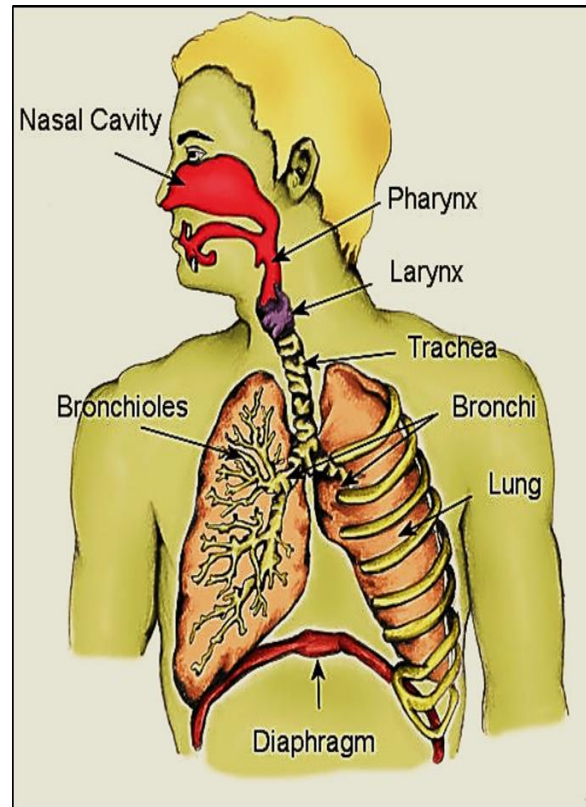


# Introduction to RS Practical slides

Medical students / First year

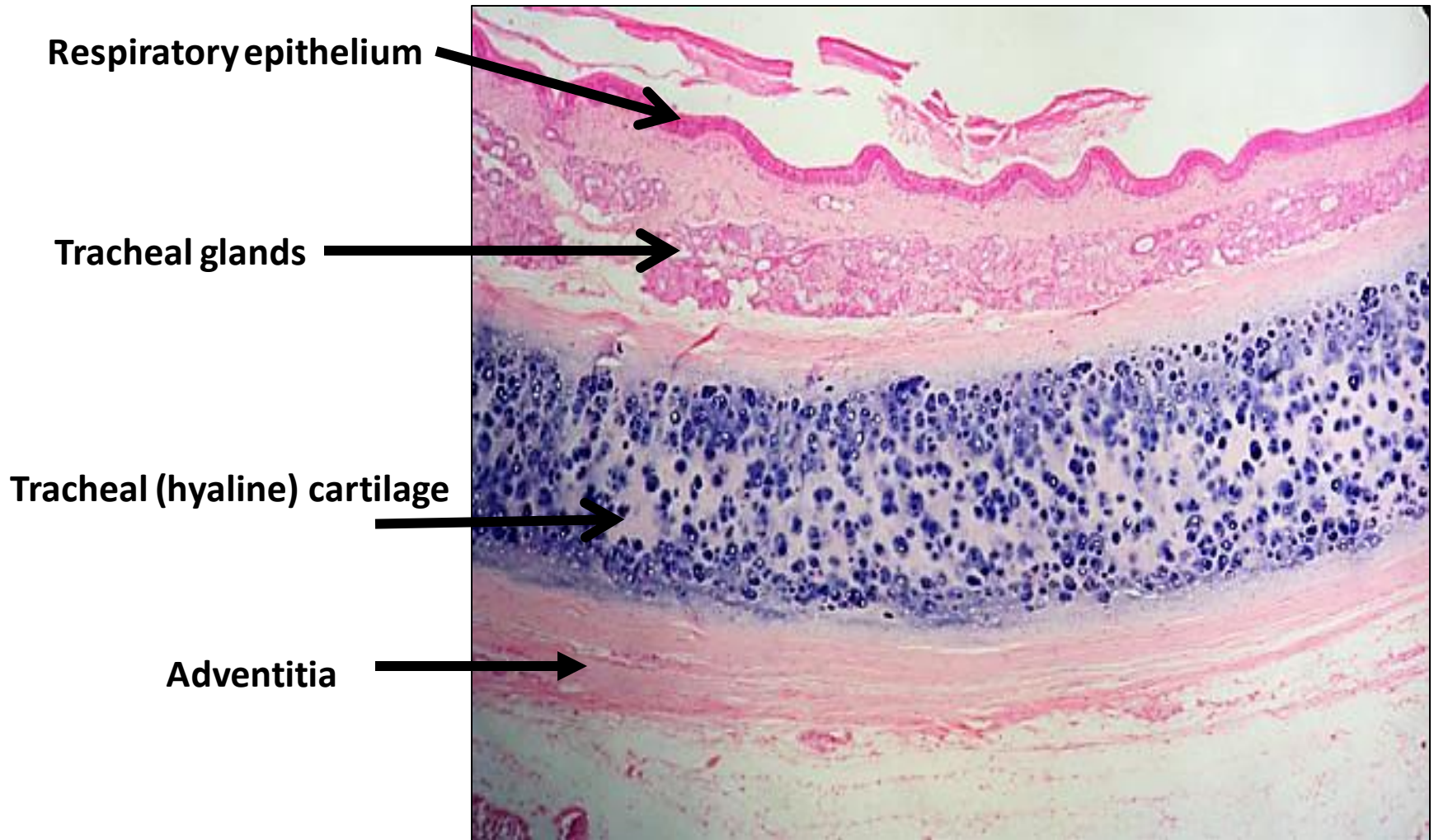
Professor Dr. Hala El- mazar



# Trachea & Esophagus



# Cross section in trachea





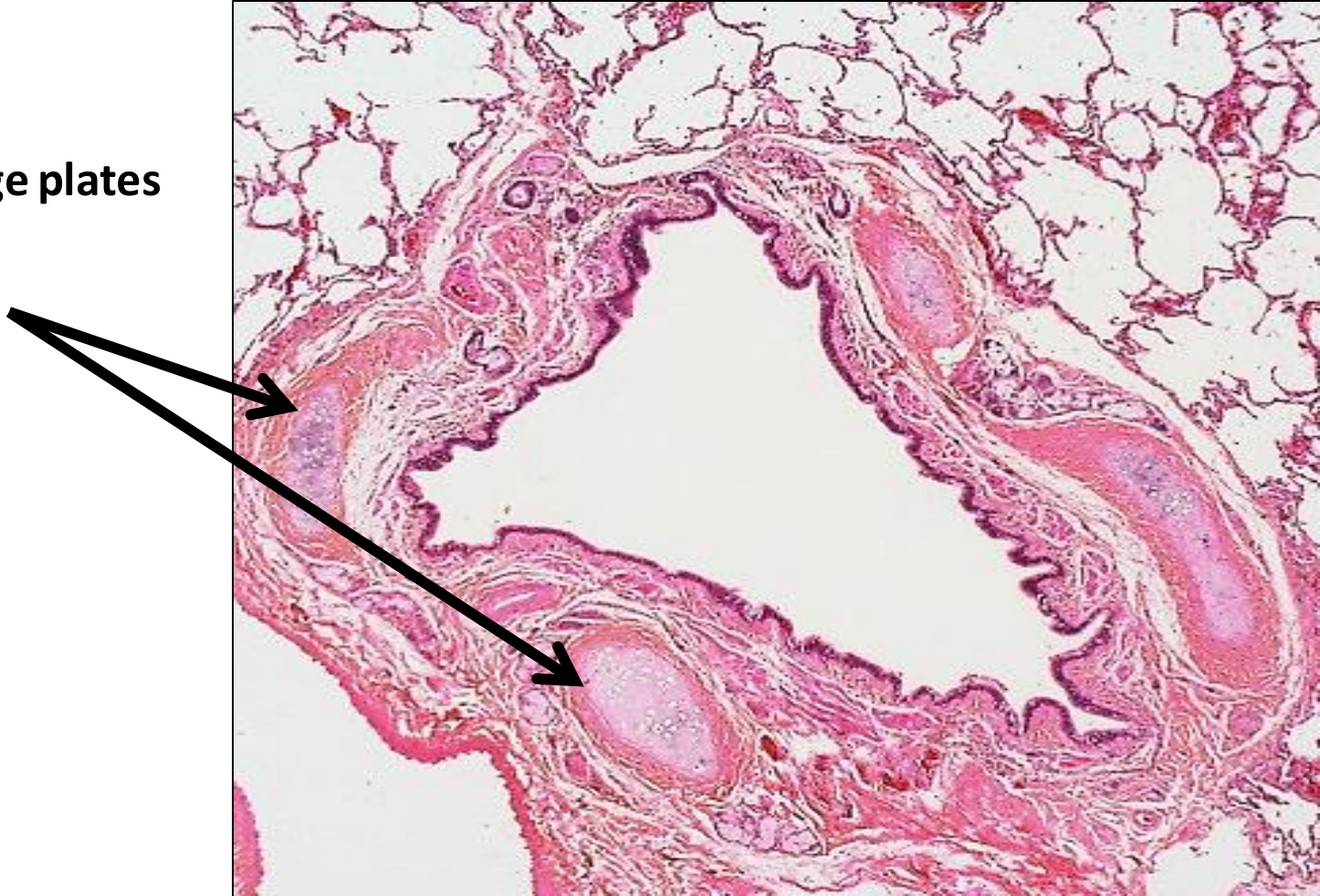
# Respiratory epithelium



**Pseudo stratified columnar ciliated with goblet cells**

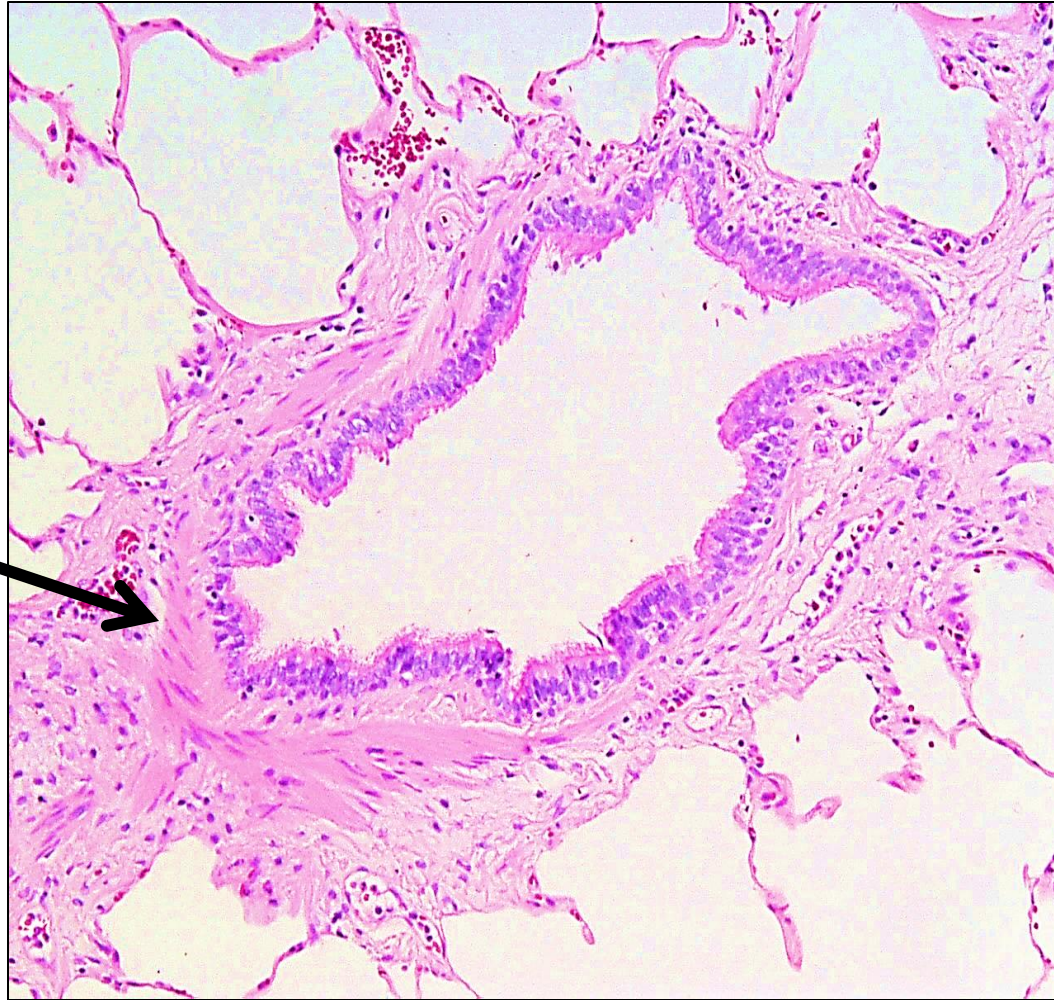
# Bronchus

Cartilage plates



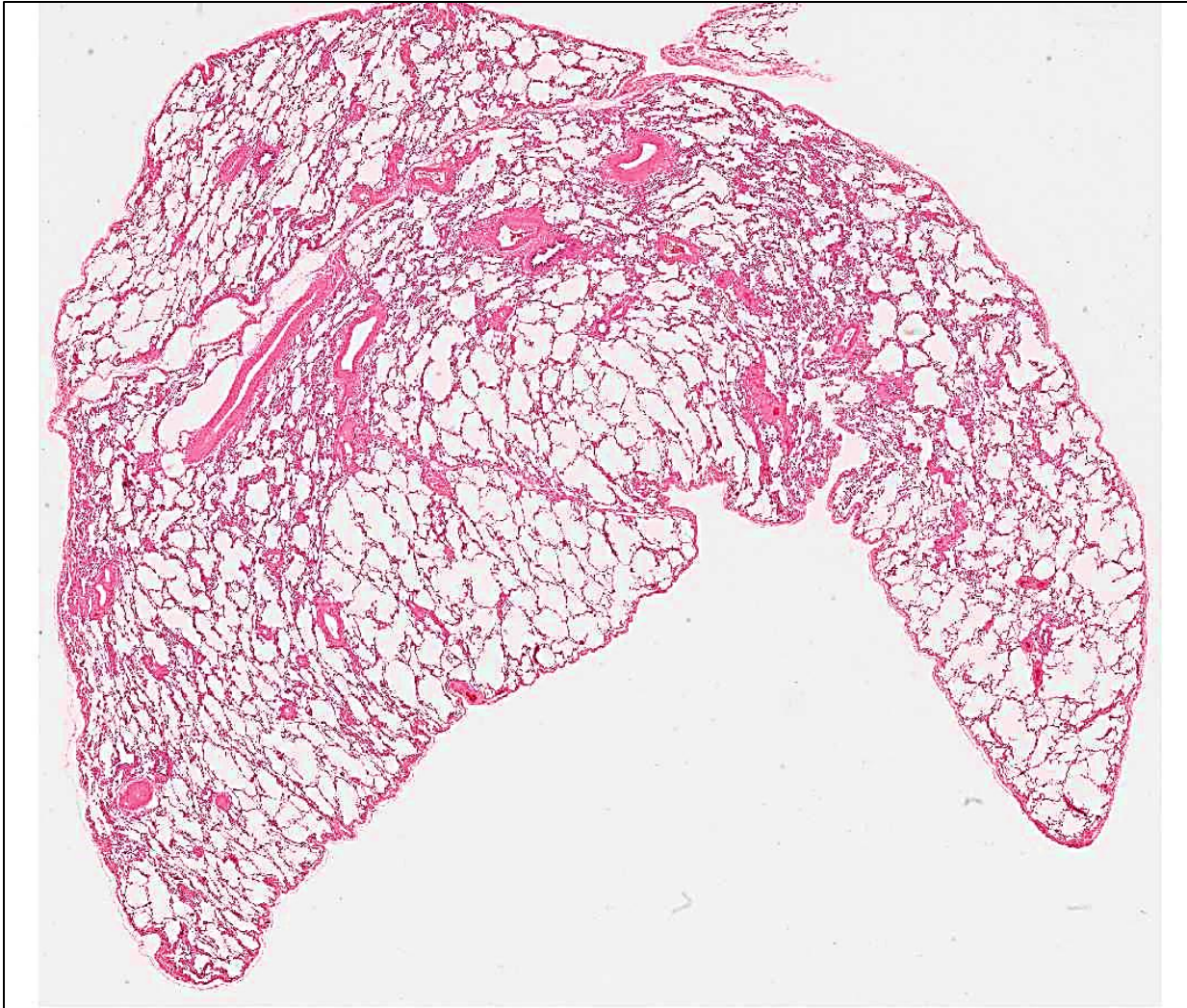


# Bronchiole



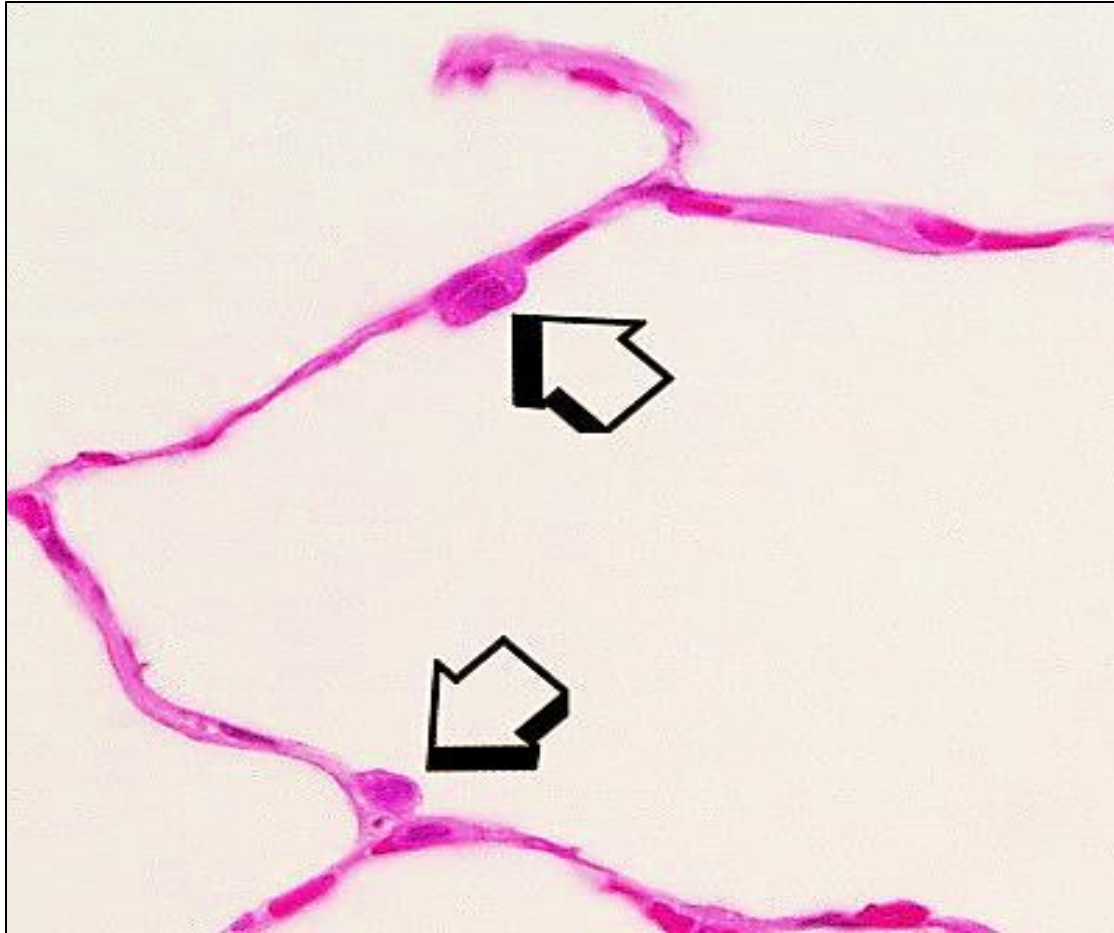
**Layer of circularly  
arranged  
smooth muscle**

# Lung





# Alveolar type II pneumocyte





# Thank you

