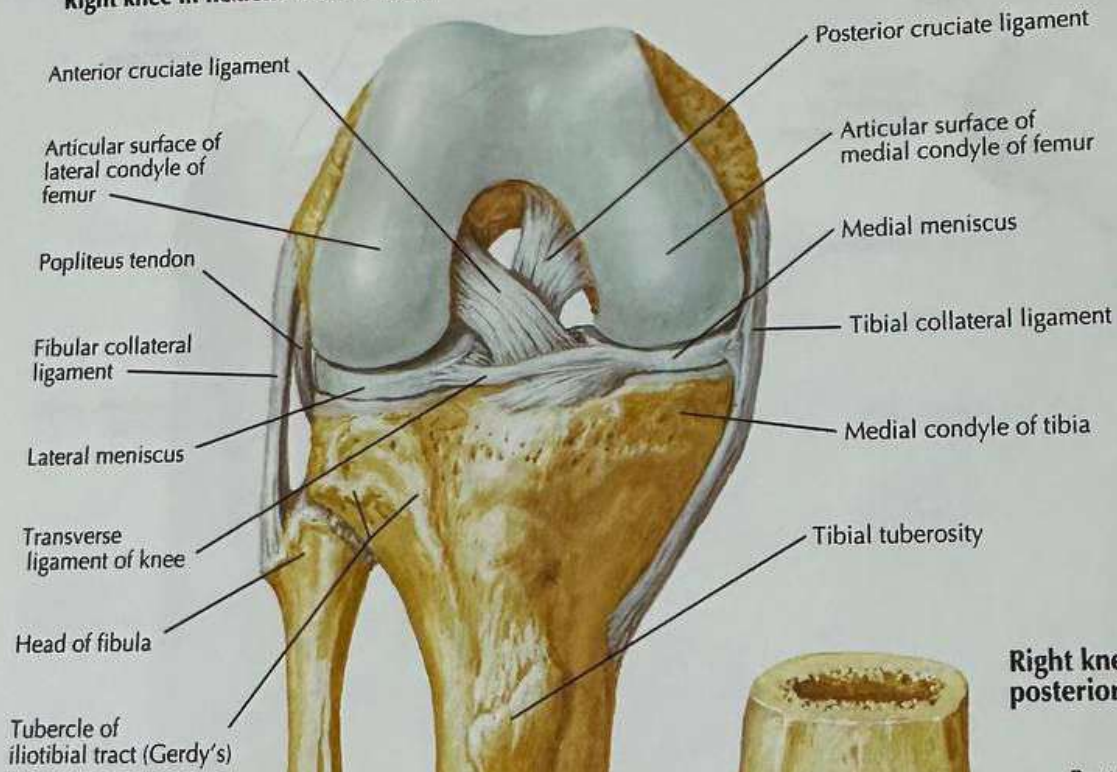
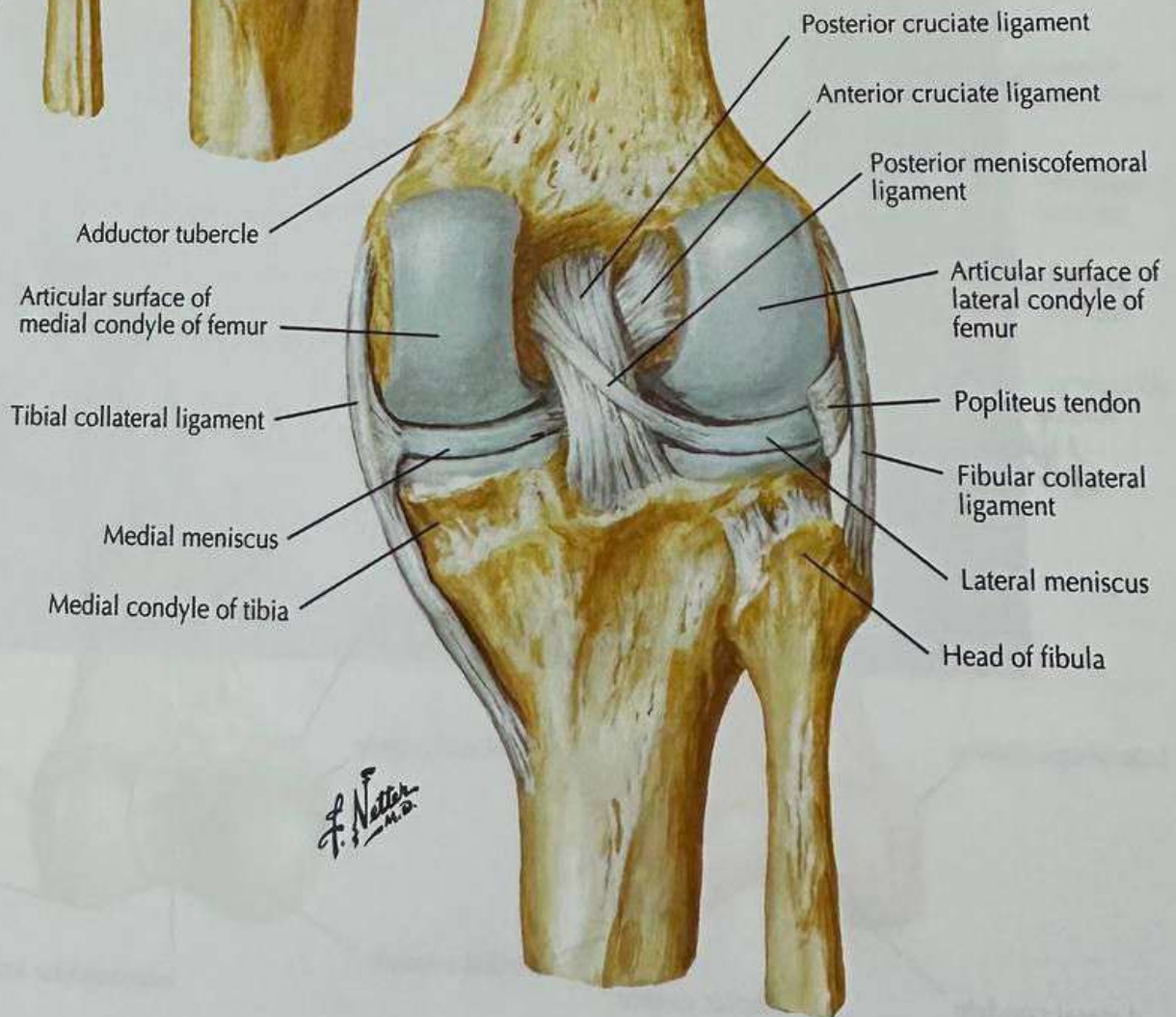


Right knee in flexion: anterior view



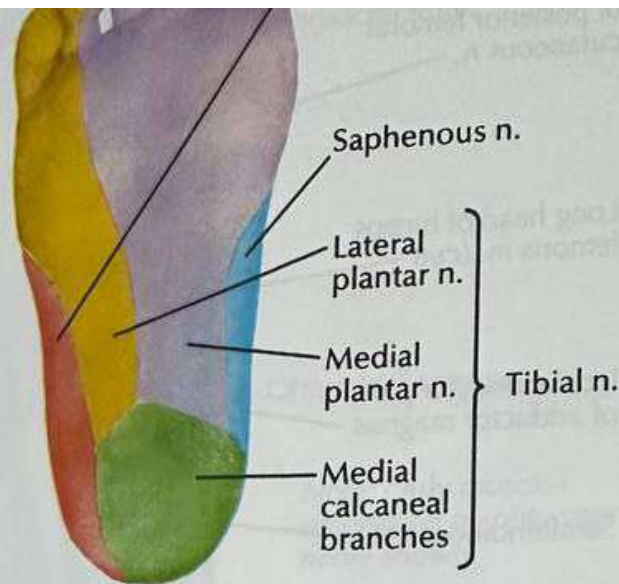
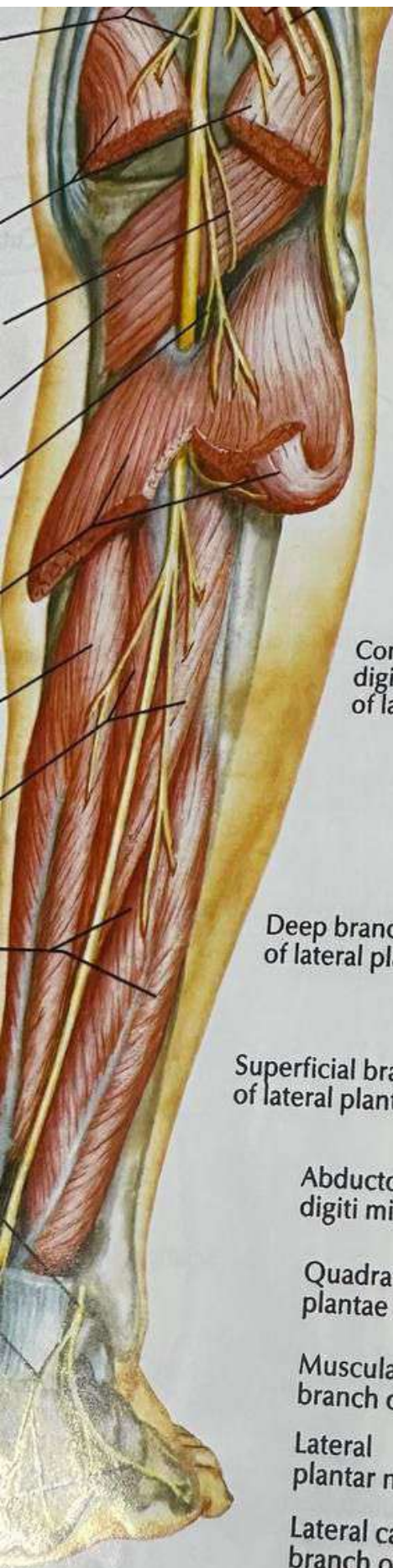
Right knee in extension: posterior view



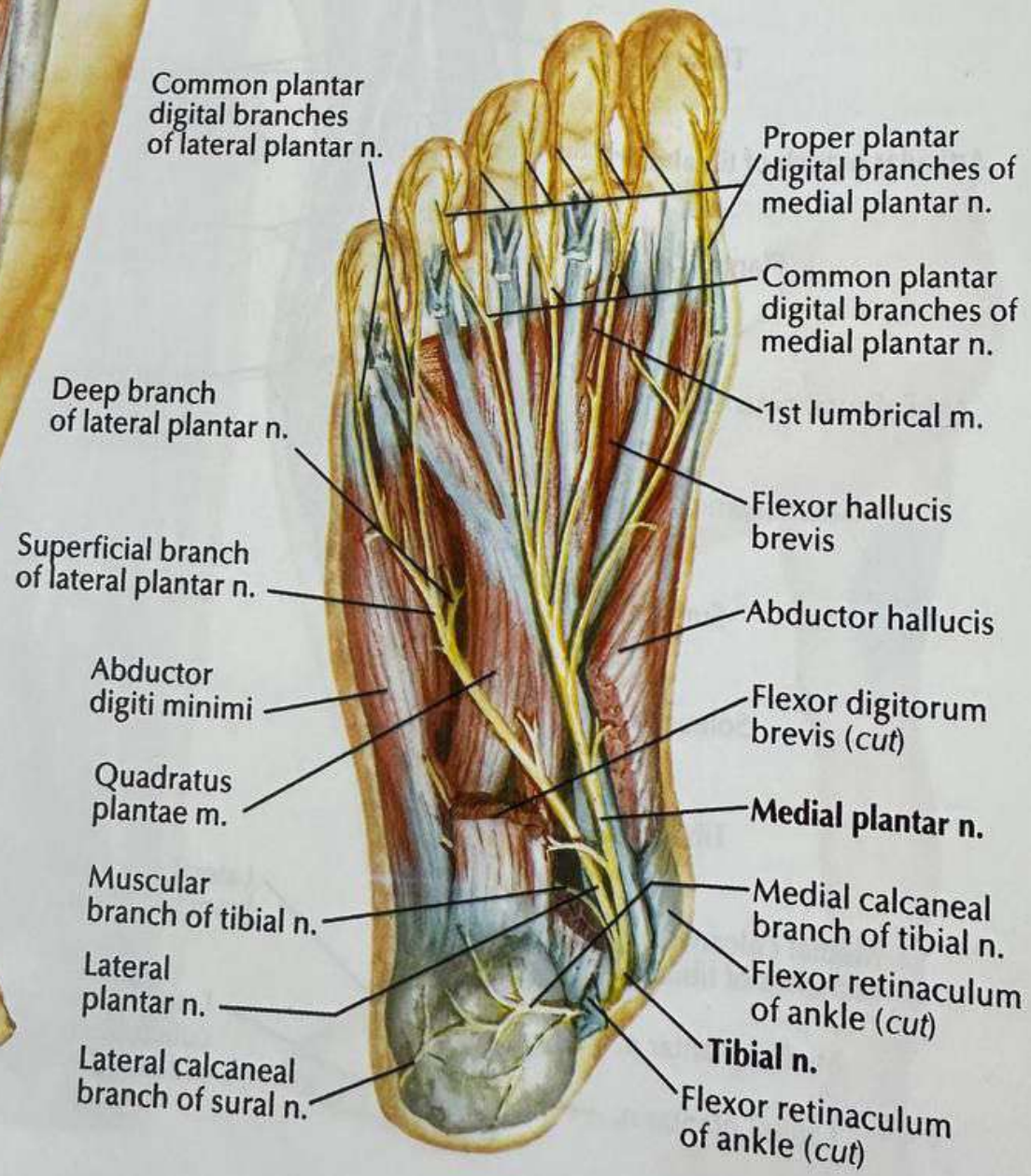
F. Netter M.D.

Third layer of muscles in bold





Cutaneous innervation of plantar region



Common plantar digital branches of lateral plantar n.

Proper plantar digital branches of medial plantar n.

Common plantar digital branches of medial plantar n.

Deep branch of lateral plantar n.

1st lumbrical m.

Superficial branch of lateral plantar n.

Flexor hallucis brevis

Abductor hallucis

Abductor digiti minimi

Flexor digitorum brevis (cut)

Quadratus plantae m.

Medial plantar n.

Muscular branch of tibial n.

Medial calcaneal branch of tibial n.

Lateral plantar n.

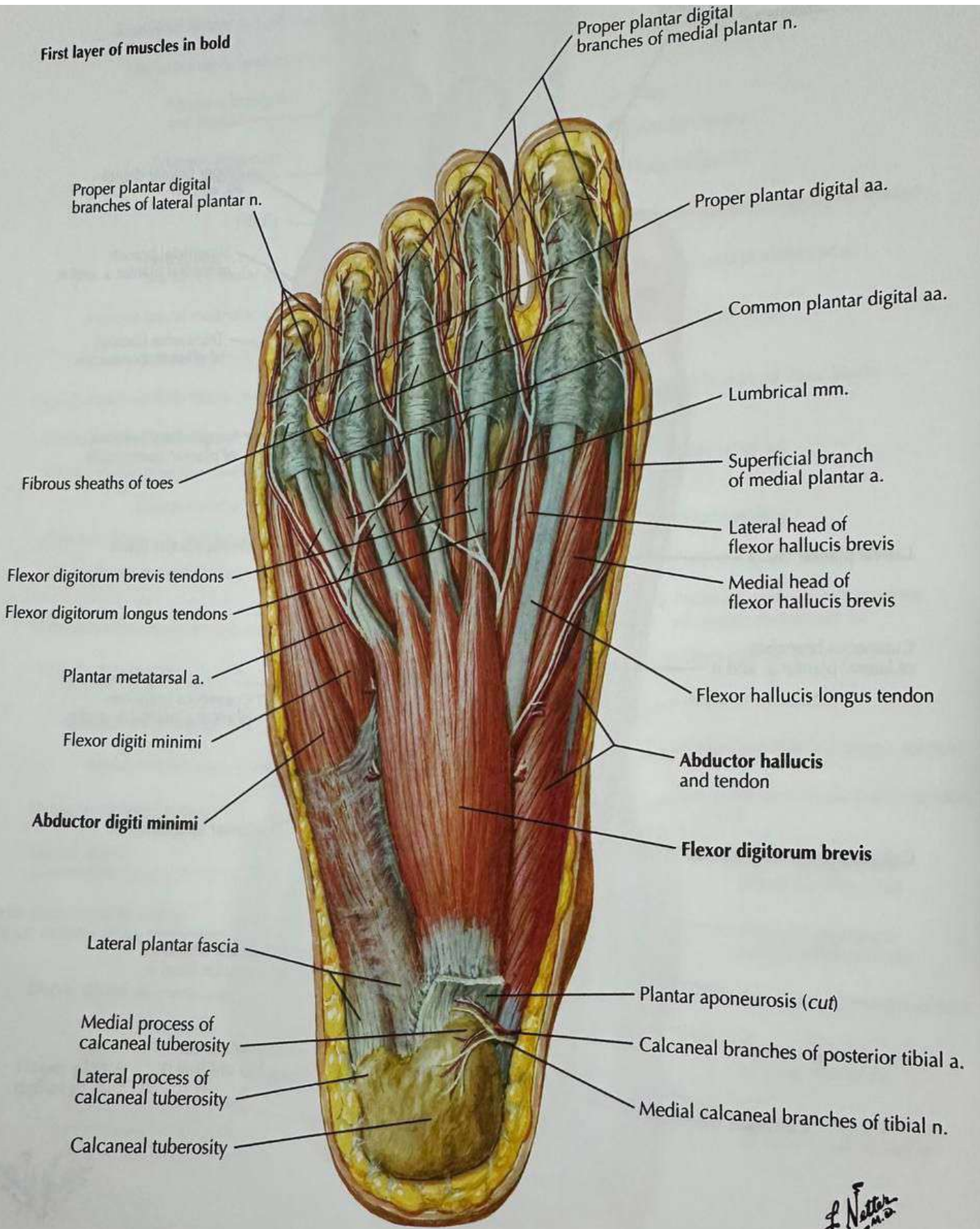
Flexor retinaculum of ankle (cut)

Lateral calcaneal branch of sural n.

Tibial n.

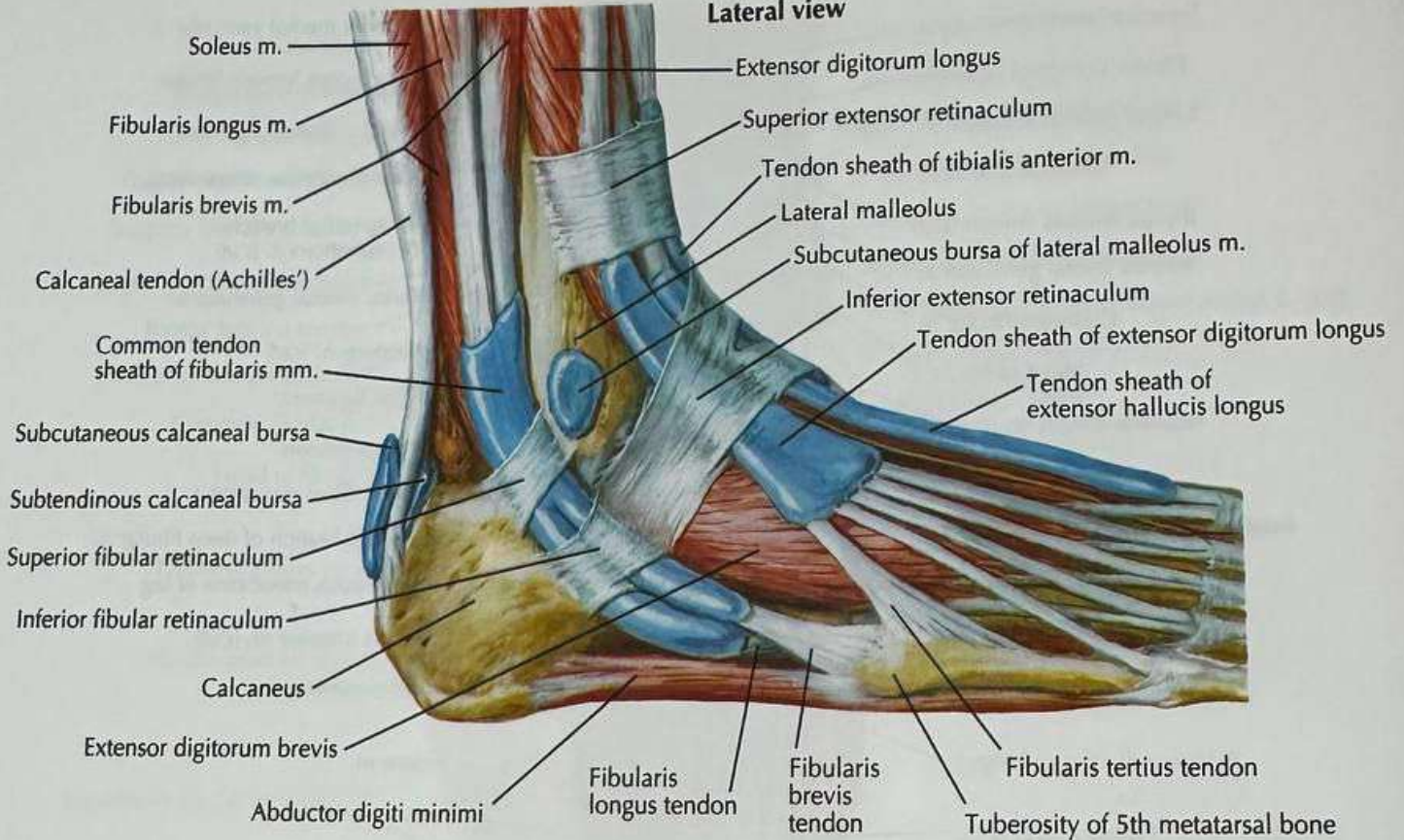
Flexor retinaculum of ankle (cut)

First layer of muscles in bold

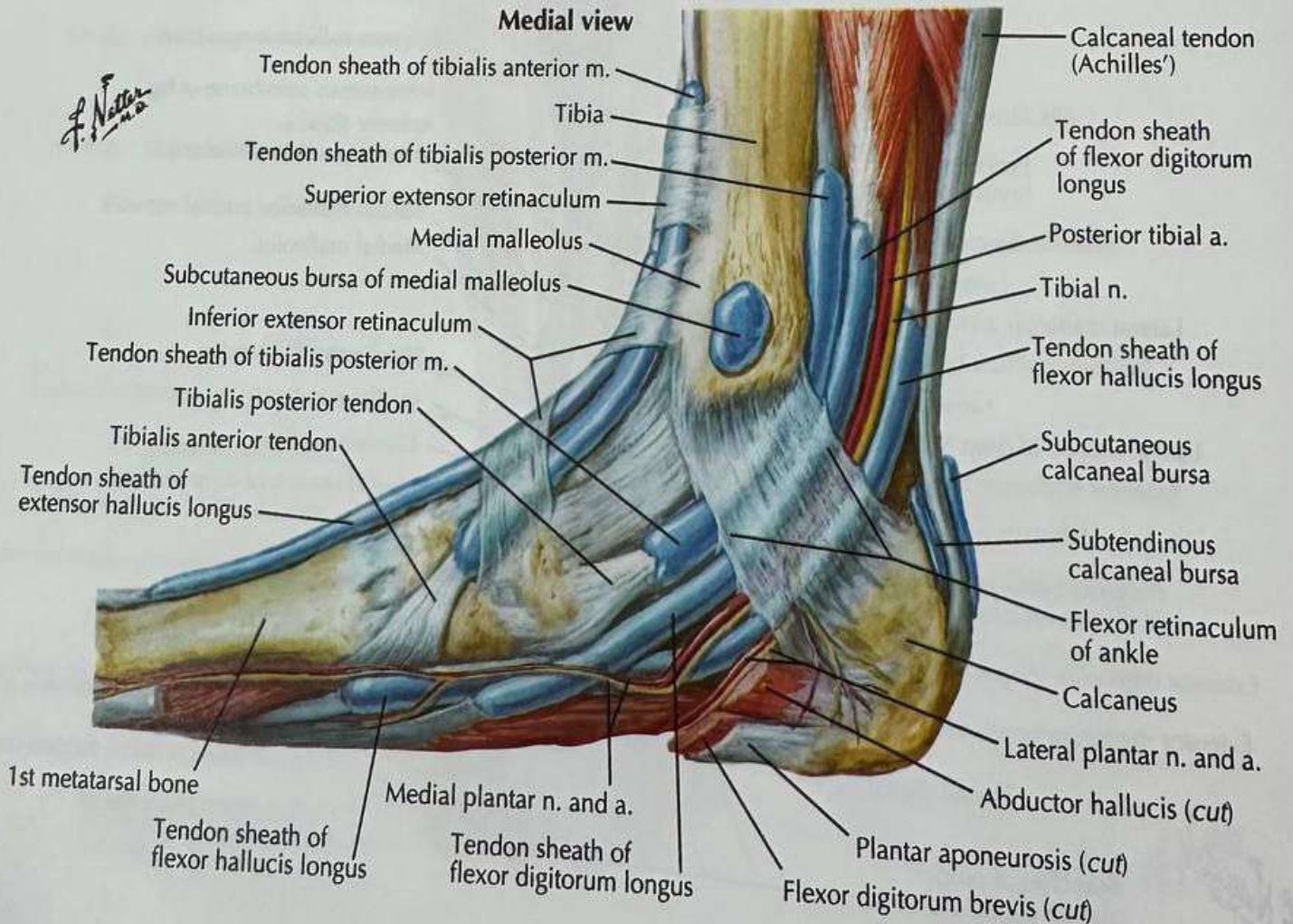


F. Netter
M.D.

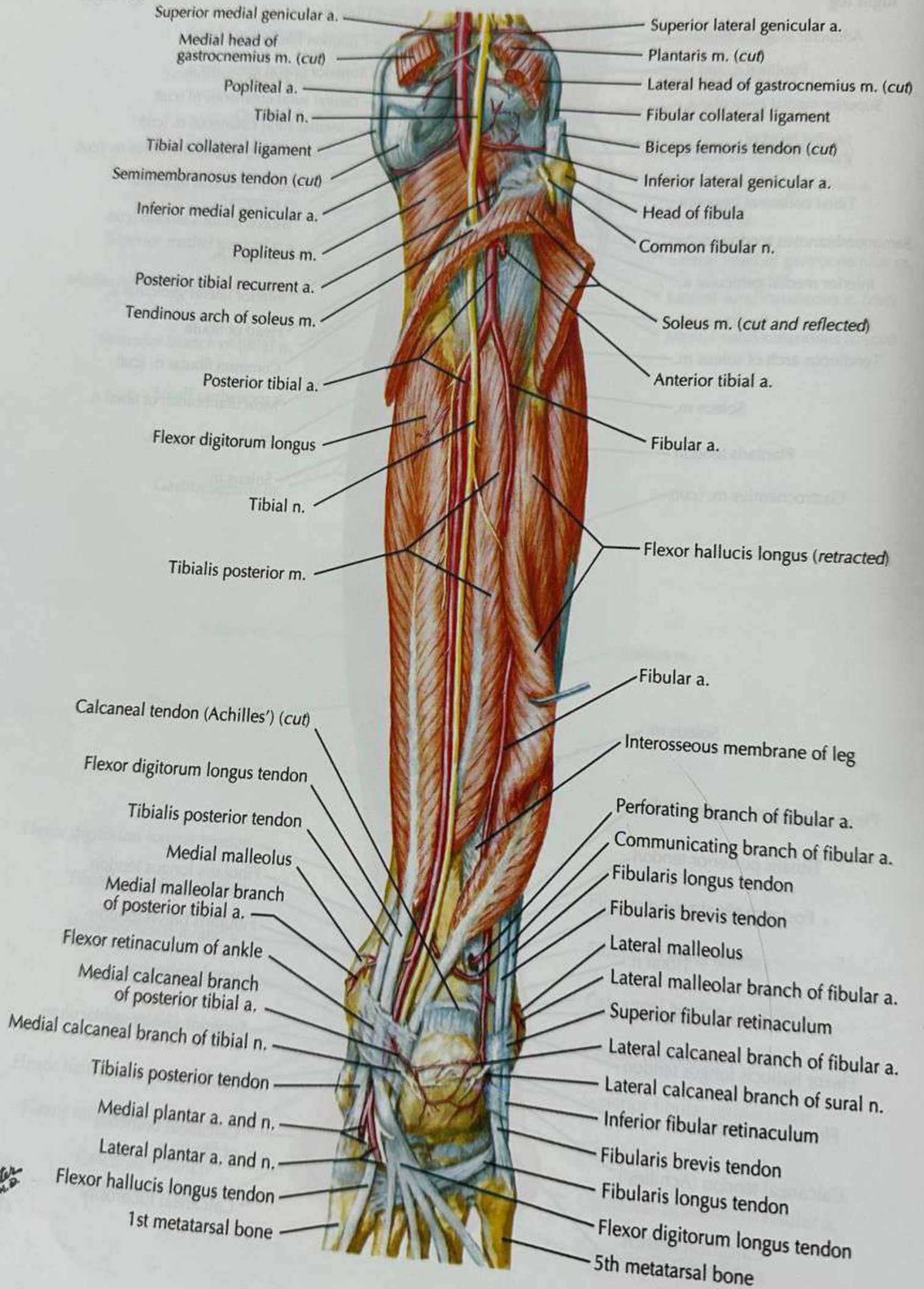
Lateral view

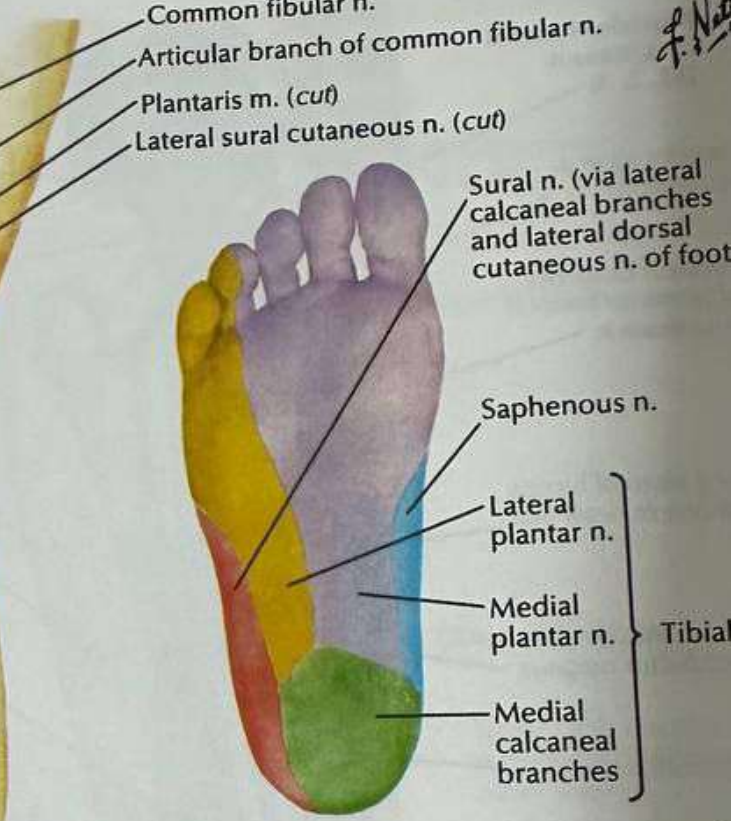
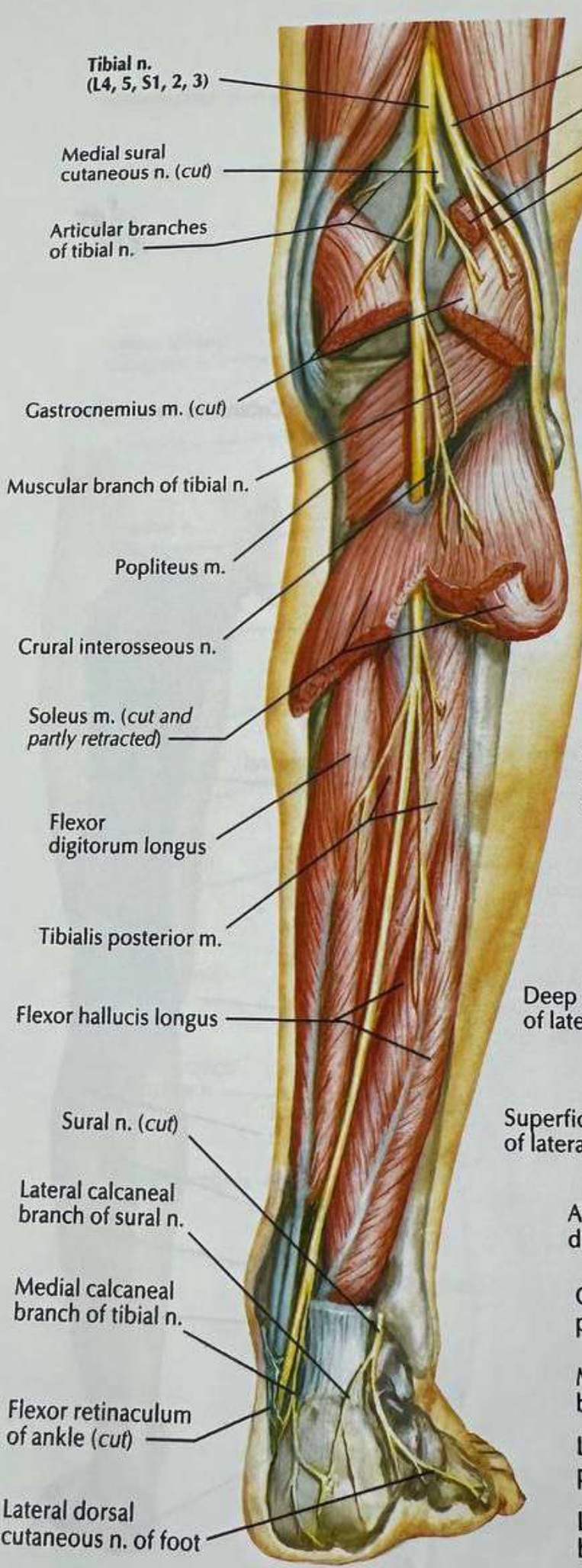


Medial view

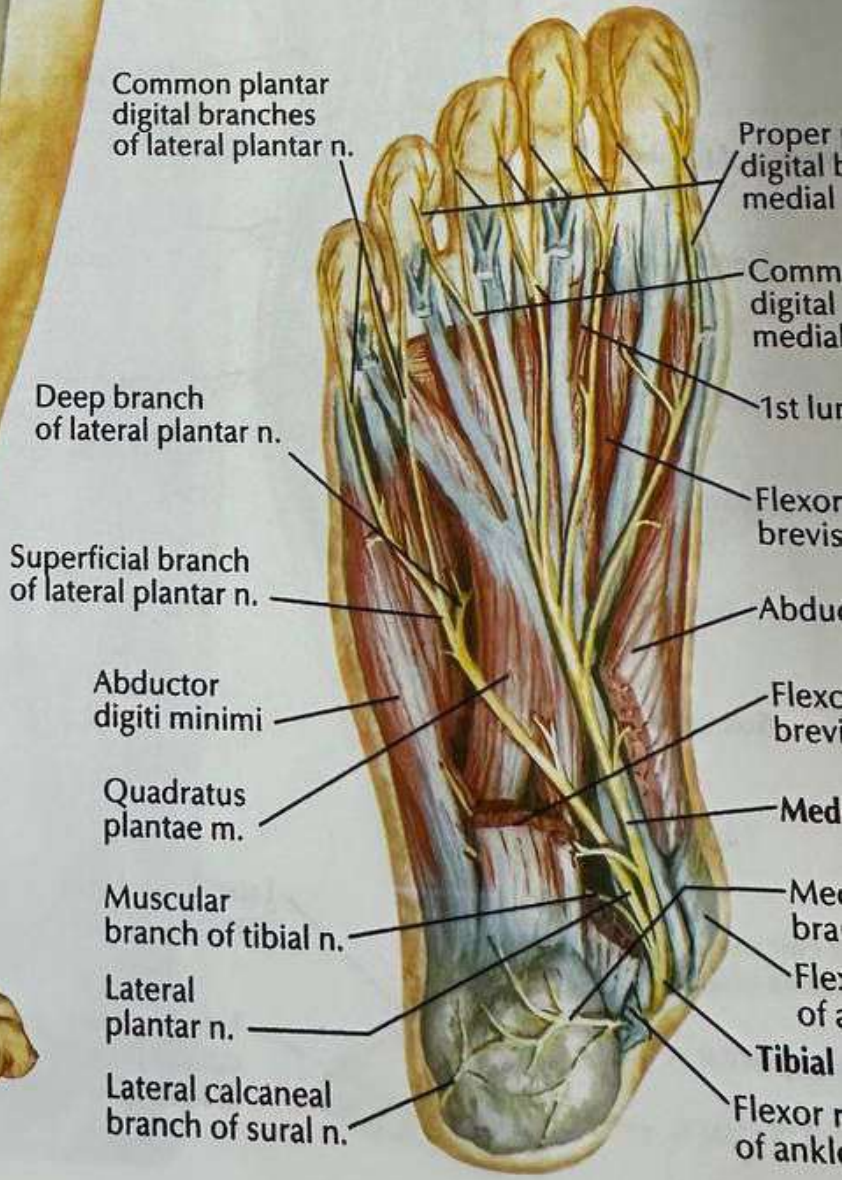


Right leg

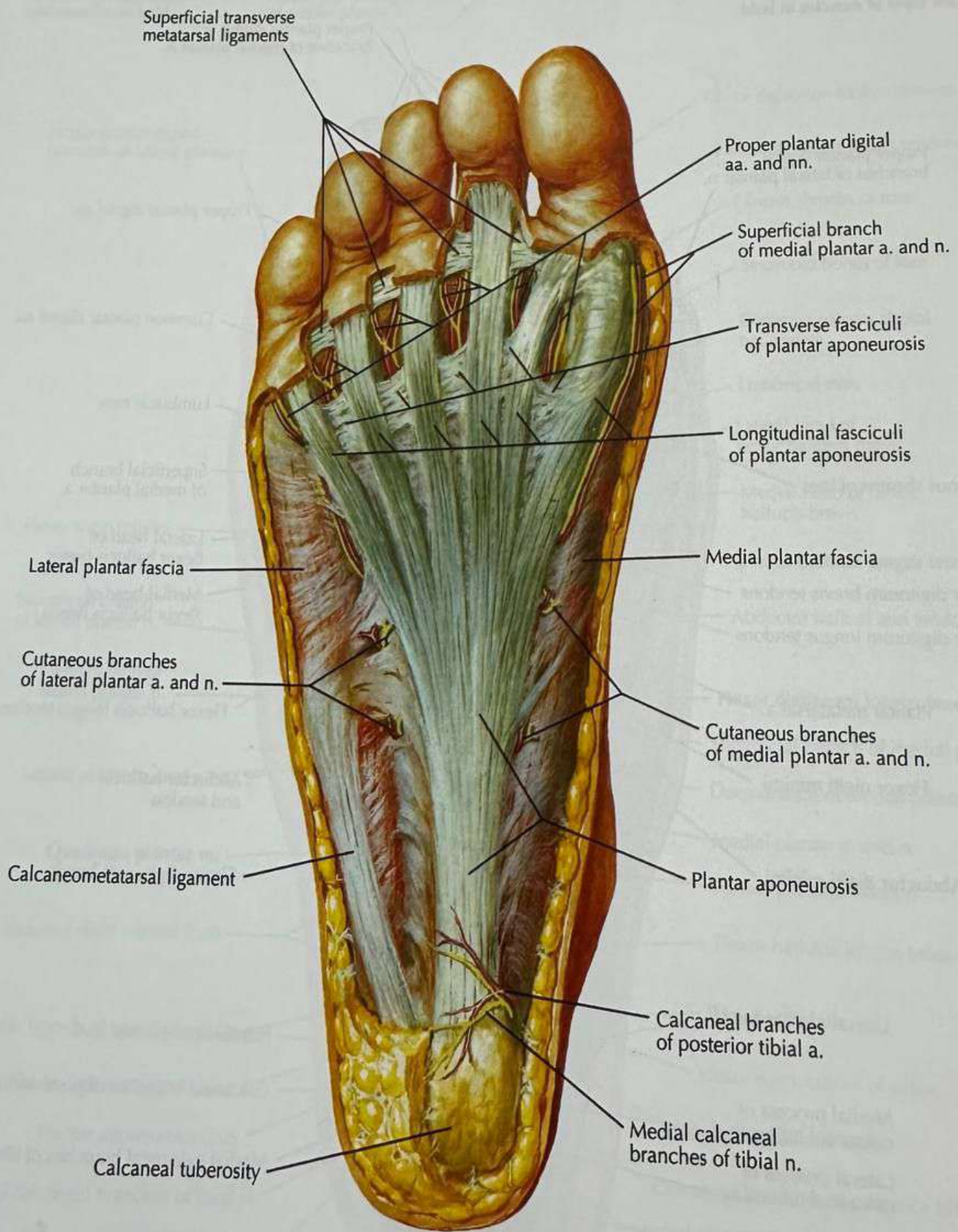




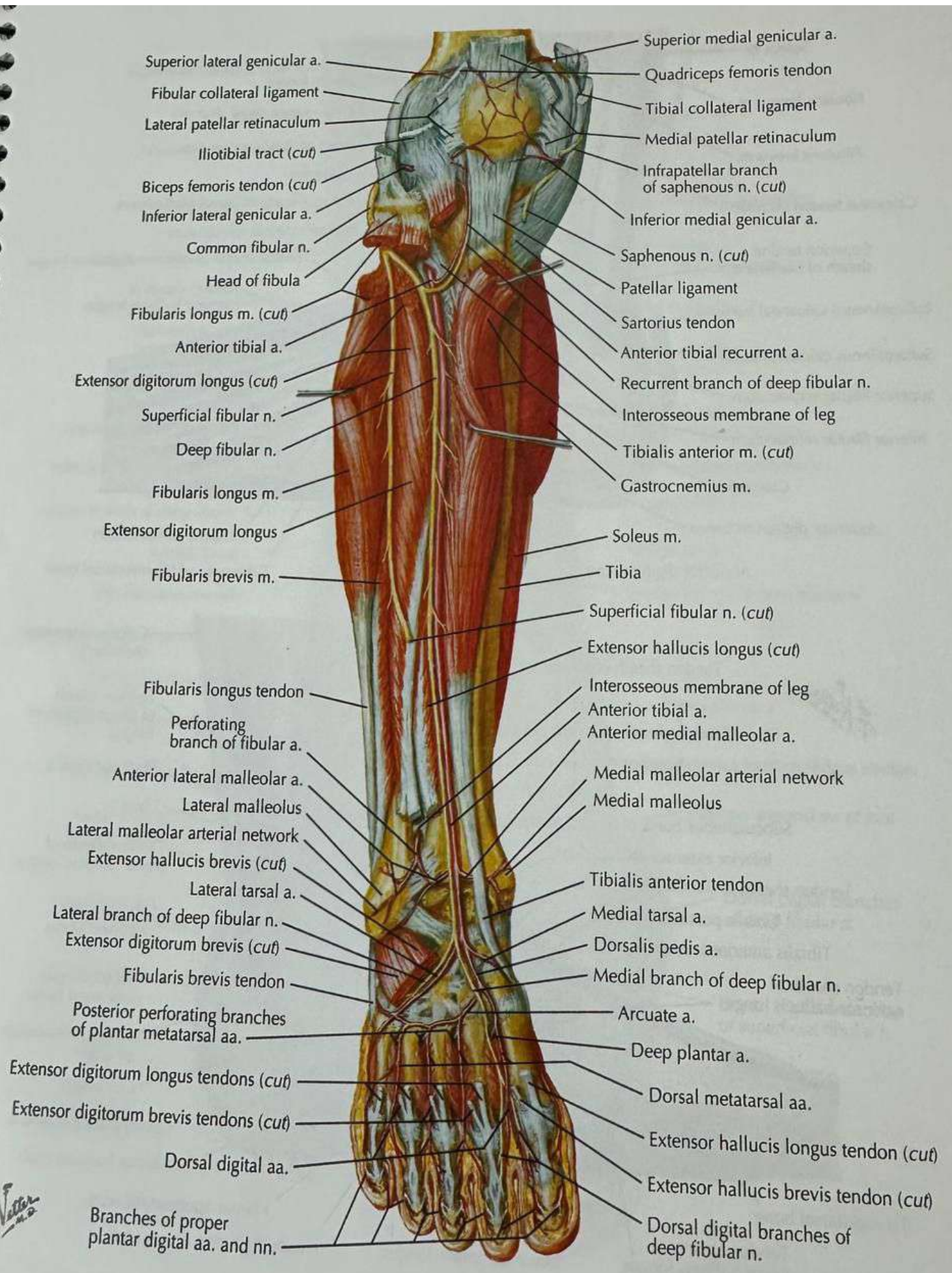
Cutaneous innervation of plantar region



F. Netter



F. Netter
M.D.



Superior lateral genicular a.
 Fibular collateral ligament
 Lateral patellar retinaculum
 Iliotibial tract (cut)
 Biceps femoris tendon (cut)
 Inferior lateral genicular a.
 Common fibular n.
 Head of fibula

Superior medial genicular a.
 Quadriceps femoris tendon
 Tibial collateral ligament
 Medial patellar retinaculum
 Infrapatellar branch of saphenous n. (cut)
 Inferior medial genicular a.

Fibularis longus m. (cut)
 Anterior tibial a.
 Extensor digitorum longus (cut)
 Superficial fibular n.
 Deep fibular n.
 Fibularis longus m.
 Extensor digitorum longus
 Fibularis brevis m.

Saphenous n. (cut)
 Patellar ligament
 Sartorius tendon
 Anterior tibial recurrent a.
 Recurrent branch of deep fibular n.
 Interosseous membrane of leg
 Tibialis anterior m. (cut)
 Gastrocnemius m.
 Soleus m.

Fibularis longus tendon
 Perforating branch of fibular a.

Tibia
 Superficial fibular n. (cut)
 Extensor hallucis longus (cut)
 Interosseous membrane of leg
 Anterior tibial a.
 Anterior medial malleolar a.

Anterior lateral malleolar a.
 Lateral malleolus
 Lateral malleolar arterial network
 Extensor hallucis brevis (cut)
 Lateral tarsal a.
 Lateral branch of deep fibular n.
 Extensor digitorum brevis (cut)
 Fibularis brevis tendon

Medial malleolar arterial network
 Medial malleolus
 Tibialis anterior tendon
 Medial tarsal a.
 Dorsalis pedis a.
 Medial branch of deep fibular n.

Posterior perforating branches of plantar metatarsal aa.
 Extensor digitorum longus tendons (cut)
 Extensor digitorum brevis tendons (cut)
 Dorsal digital aa.

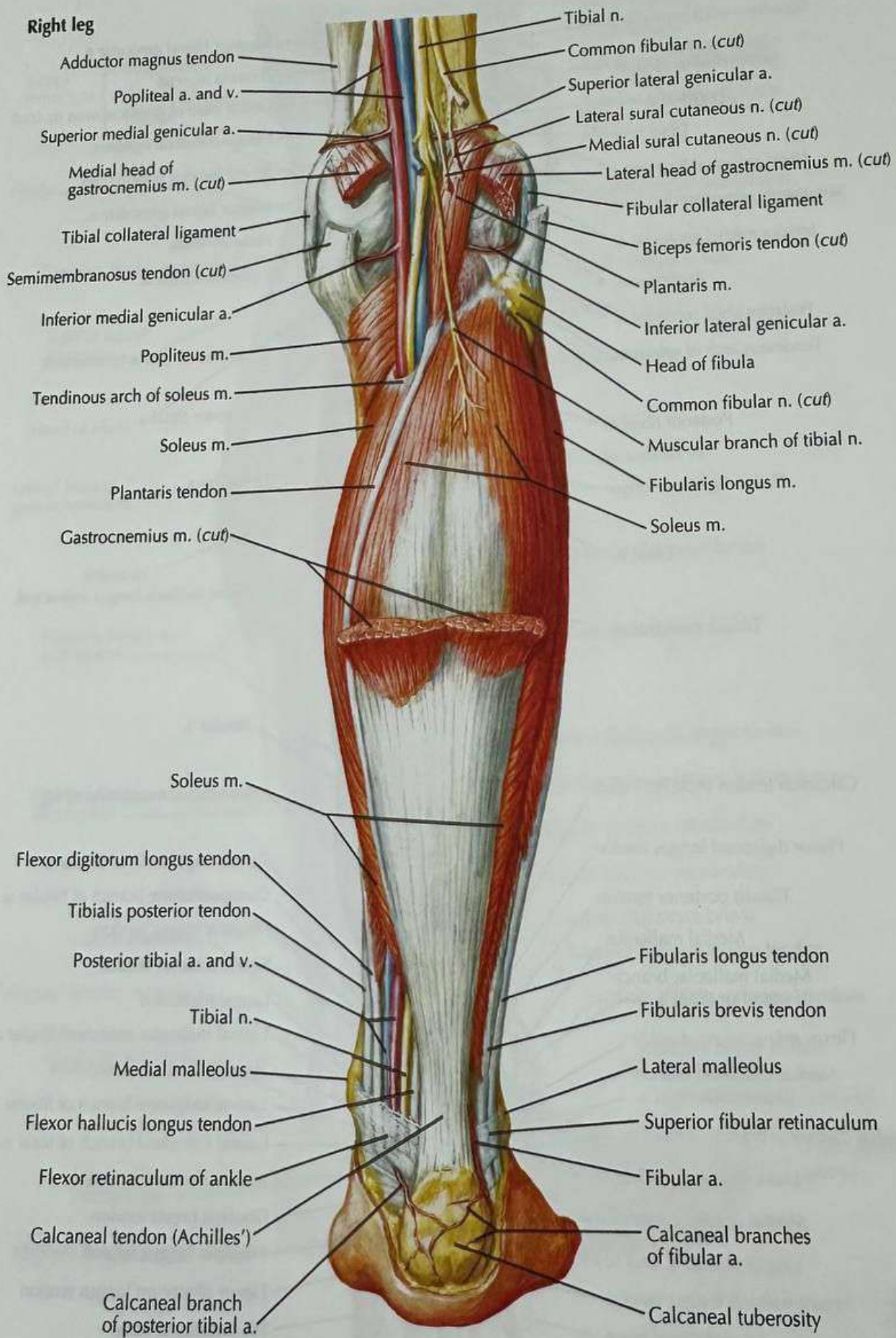
Arcuate a.
 Deep plantar a.
 Dorsal metatarsal aa.
 Extensor hallucis longus tendon (cut)
 Extensor hallucis brevis tendon (cut)

Branches of proper plantar digital aa. and nn.

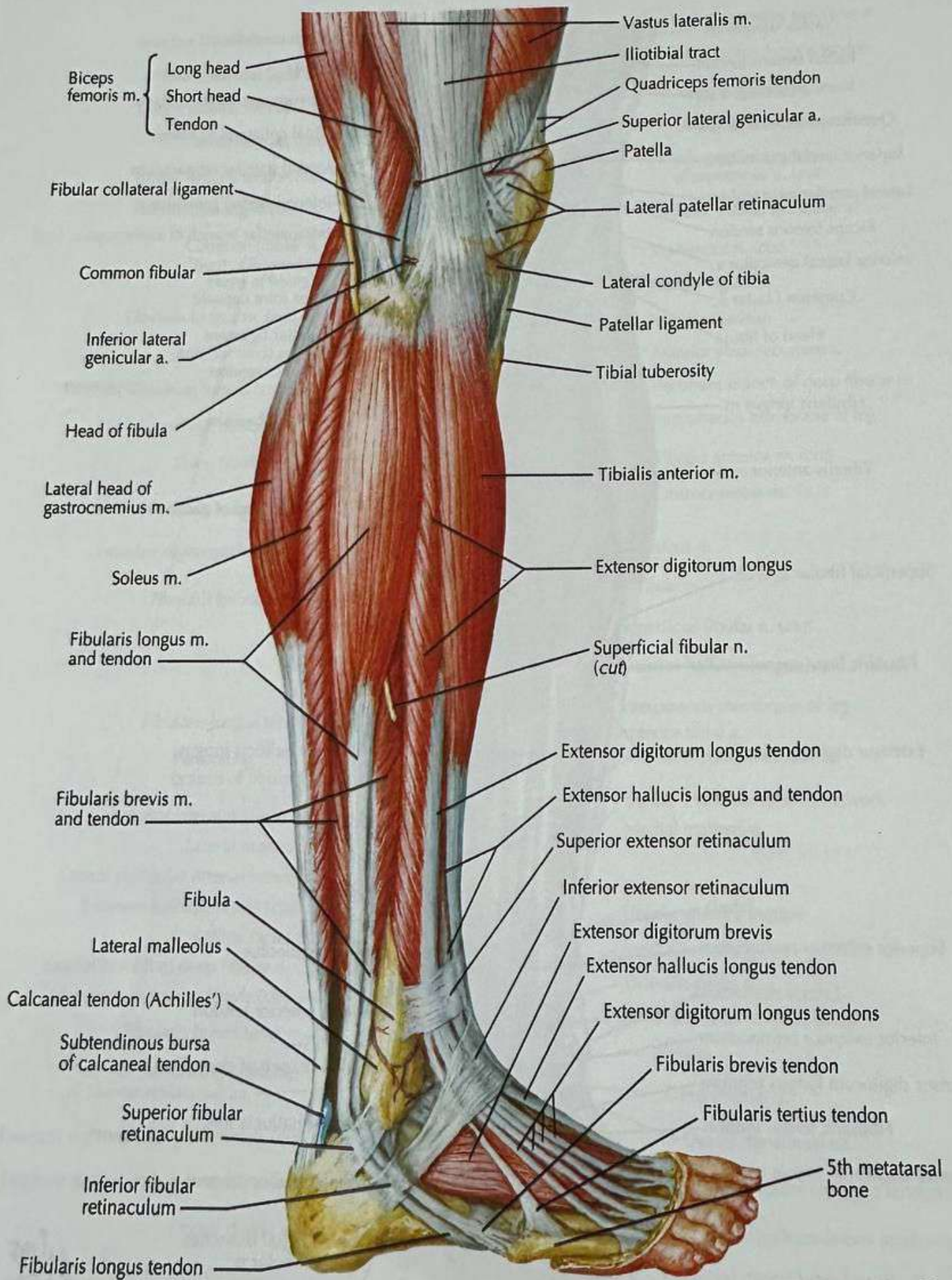
Dorsal digital branches of deep fibular n.

F. Netter M.D.

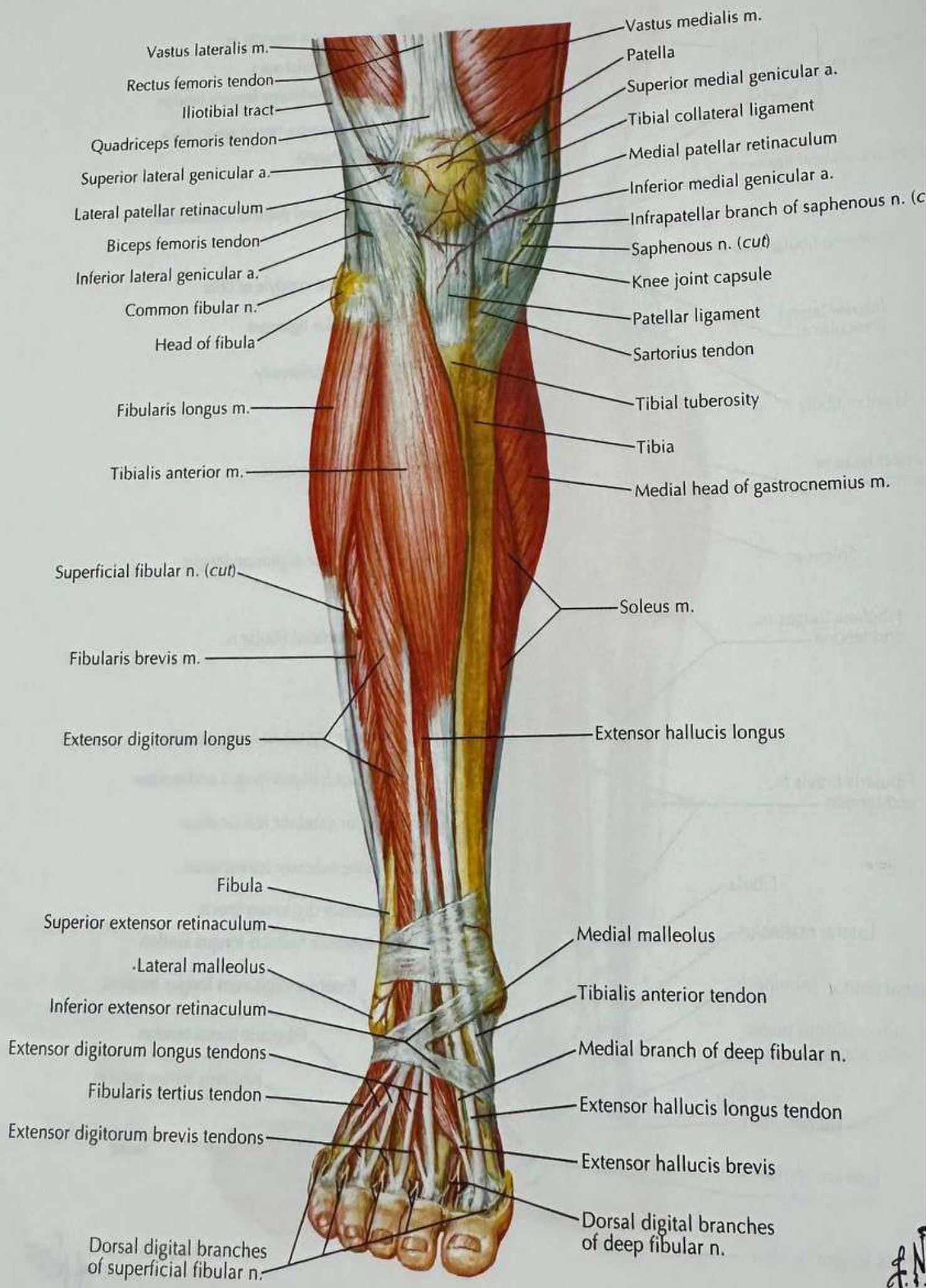
Right leg



F. Netter M.D.



F. Netter
 M.D.



Vastus lateralis m.
 Rectus femoris tendon
 Iliotibial tract
 Quadriceps femoris tendon
 Superior lateral genicular a.
 Lateral patellar retinaculum
 Biceps femoris tendon
 Inferior lateral genicular a.
 Common fibular n.
 Head of fibula
 Fibularis longus m.
 Tibialis anterior m.

Vastus medialis m.
 Patella
 Superior medial genicular a.
 Tibial collateral ligament
 Medial patellar retinaculum
 Inferior medial genicular a.
 Infrapatellar branch of saphenous n. (cut)
 Saphenous n. (cut)
 Knee joint capsule
 Patellar ligament
 Sartorius tendon
 Tibial tuberosity
 Tibia
 Medial head of gastrocnemius m.

Superficial fibular n. (cut)
 Fibularis brevis m.
 Extensor digitorum longus

Soleus m.
 Extensor hallucis longus

Fibula
 Superior extensor retinaculum
 Lateral malleolus
 Inferior extensor retinaculum
 Extensor digitorum longus tendons
 Fibularis tertius tendon
 Extensor digitorum brevis tendons
 Dorsal digital branches of superficial fibular n.

Medial malleolus
 Tibialis anterior tendon
 Medial branch of deep fibular n.
 Extensor hallucis longus tendon
 Extensor hallucis brevis
 Dorsal digital branches of deep fibular n.

J.N.

Subcutaneous olecranon bursa

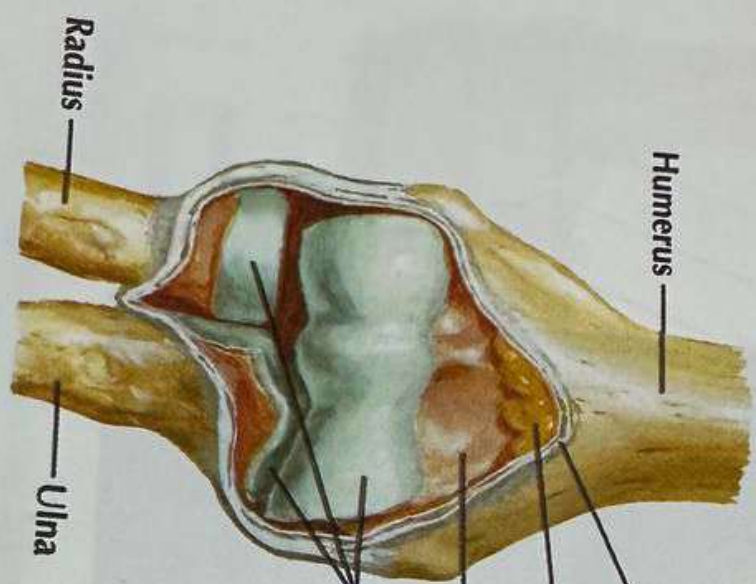


Ulna



Subcutaneous olecranon bursa

Opened joint: anterior view

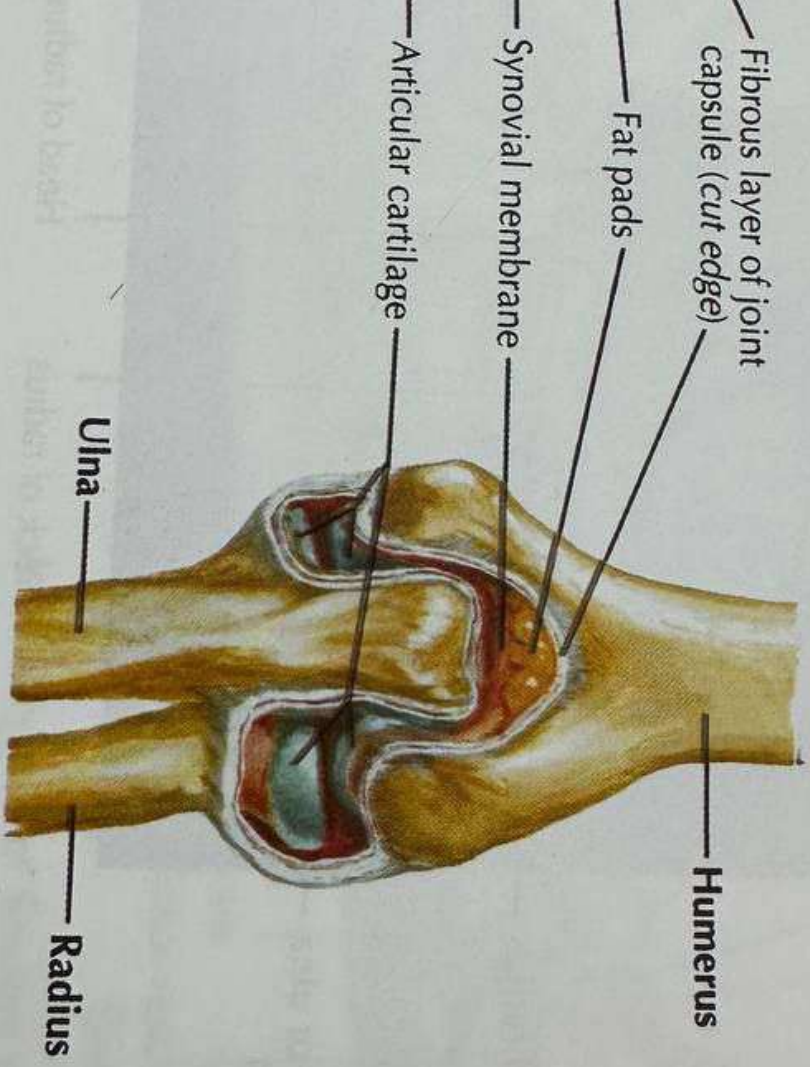


Humerus

Radius

Ulna

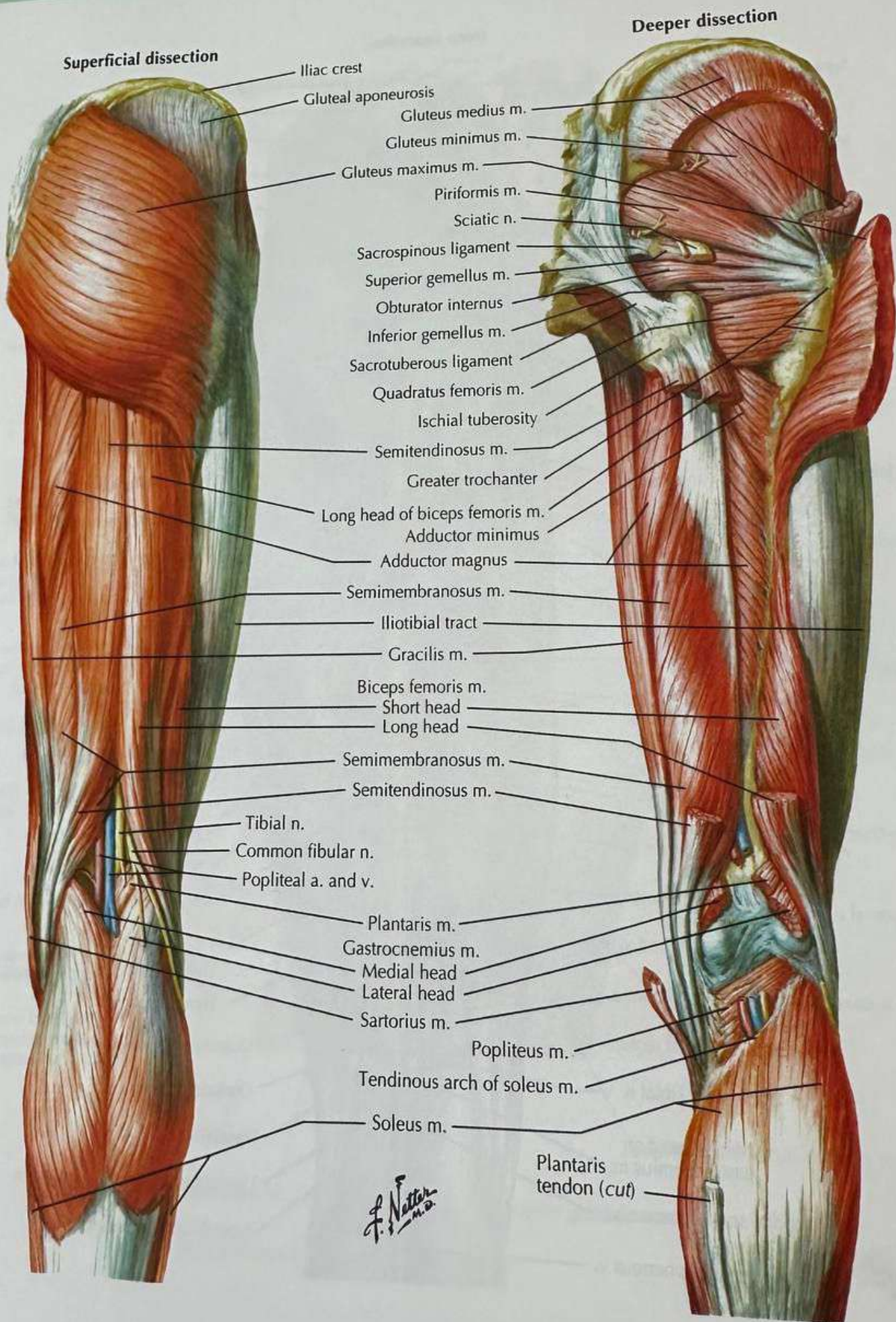
Opened joint: posterior view



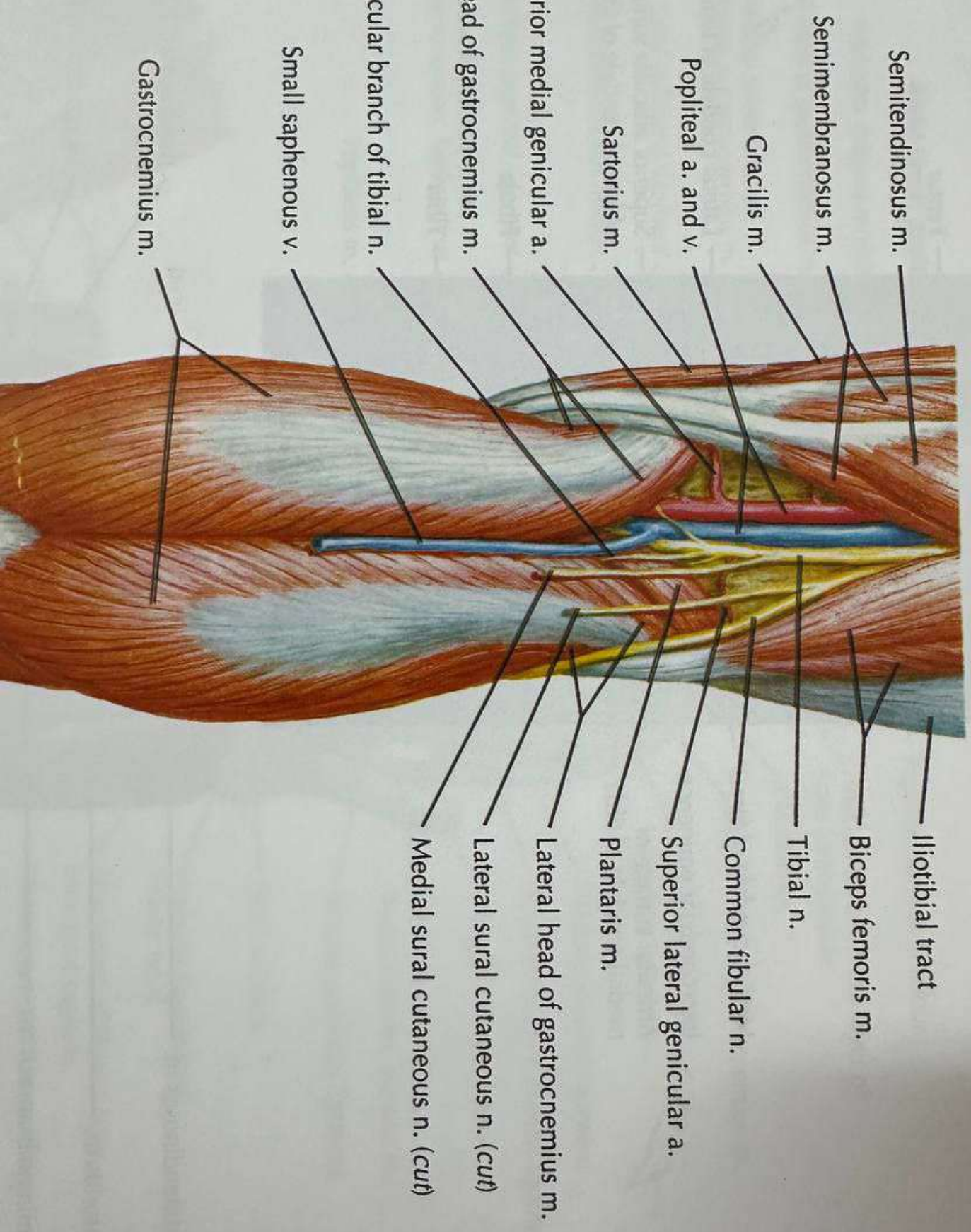
Humerus

Ulna

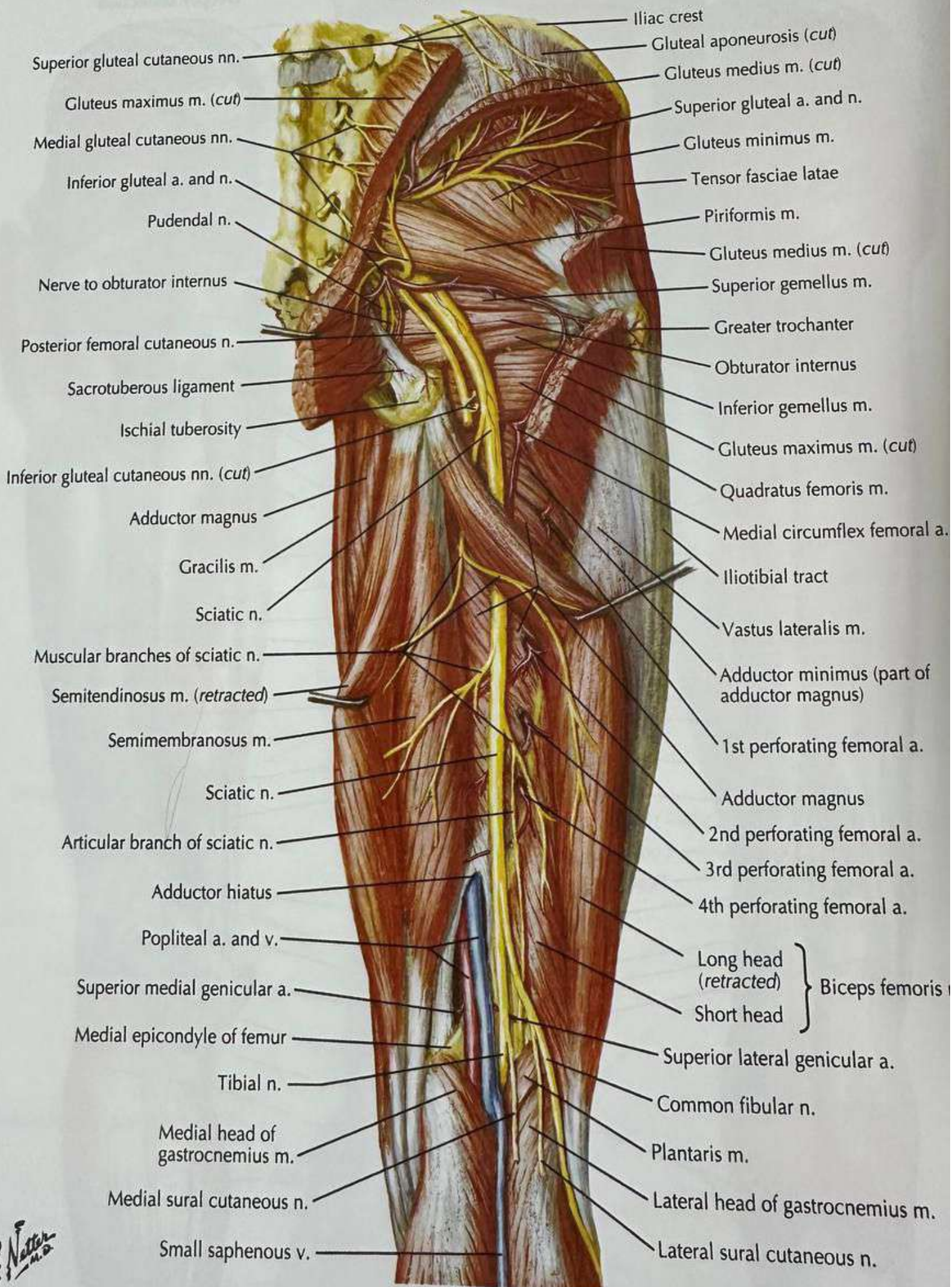
Radius



Right leg



Deep dissection



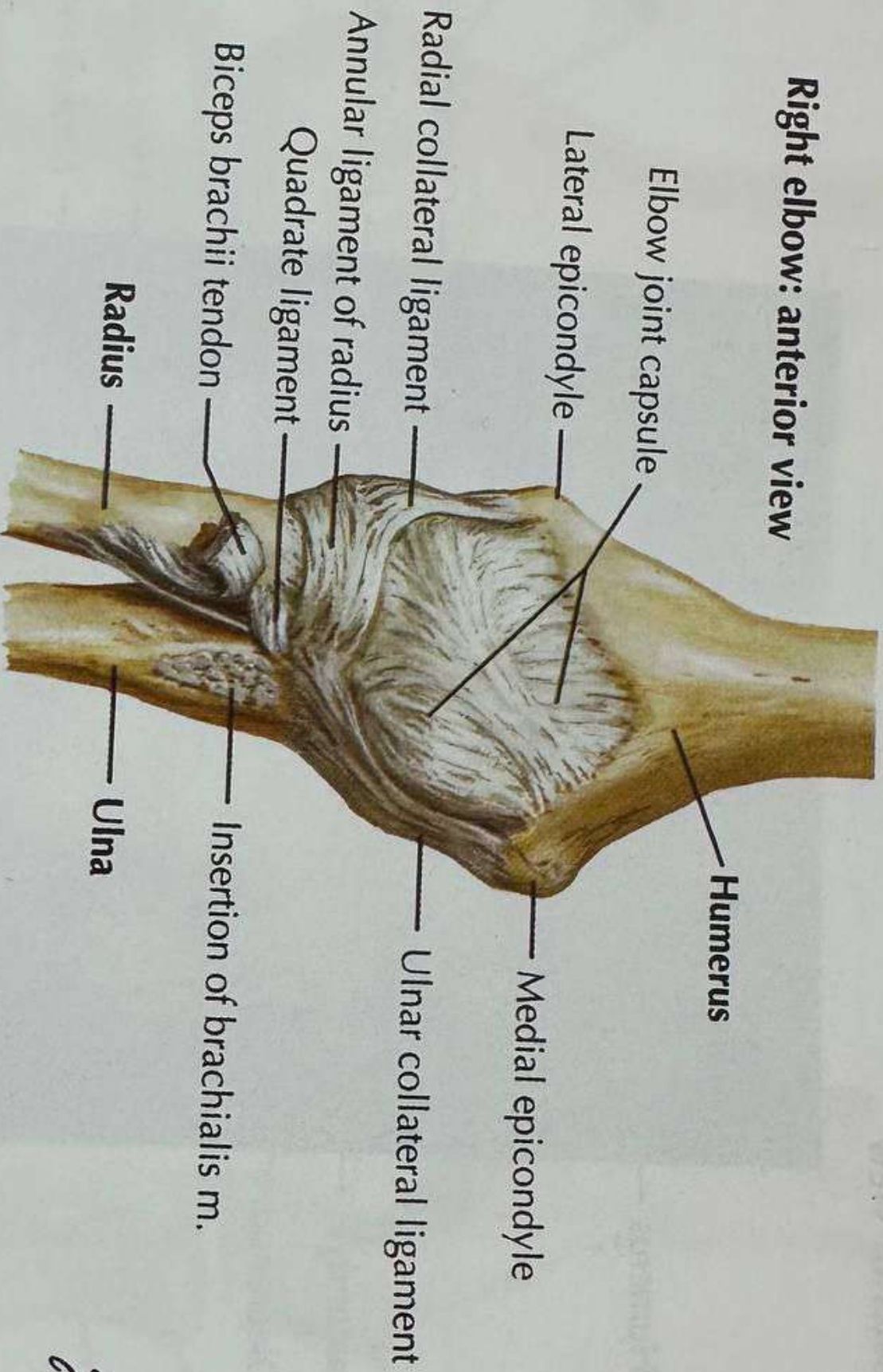
See also Plates S-159, S-161

Anteroposterior view



Lateral view

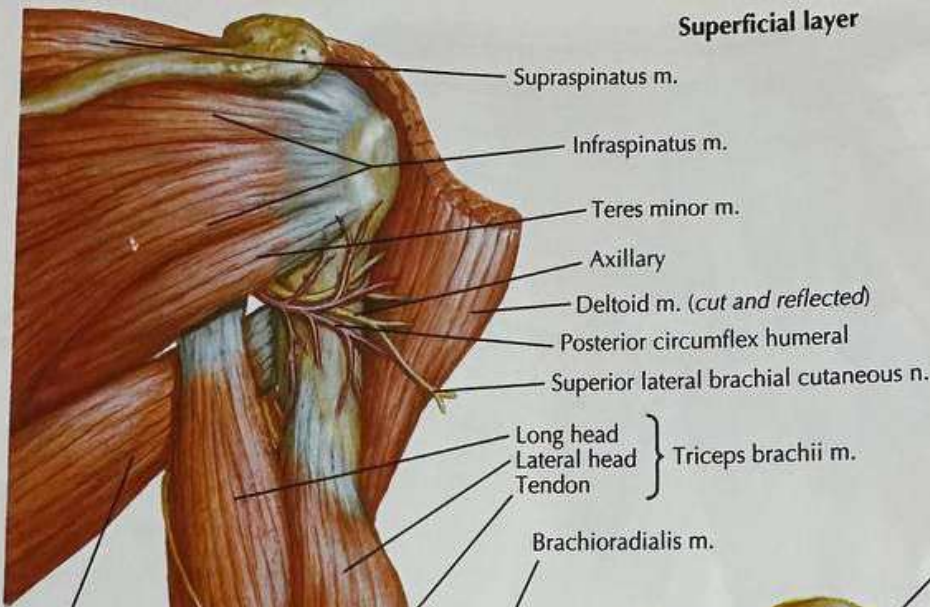
Right elbow: anterior view



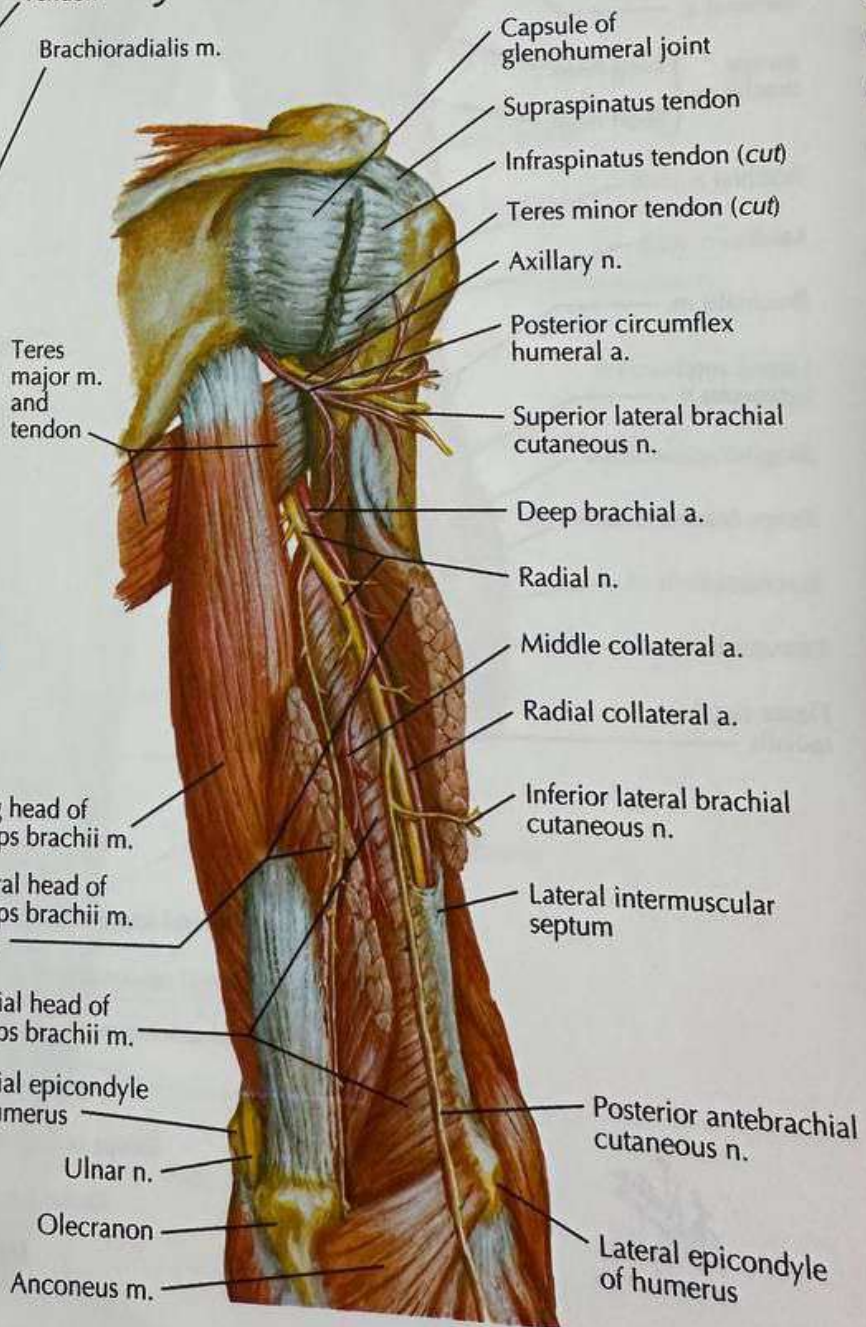
In 90 degrees of flexion...

F. Netter M.D.

Superficial layer



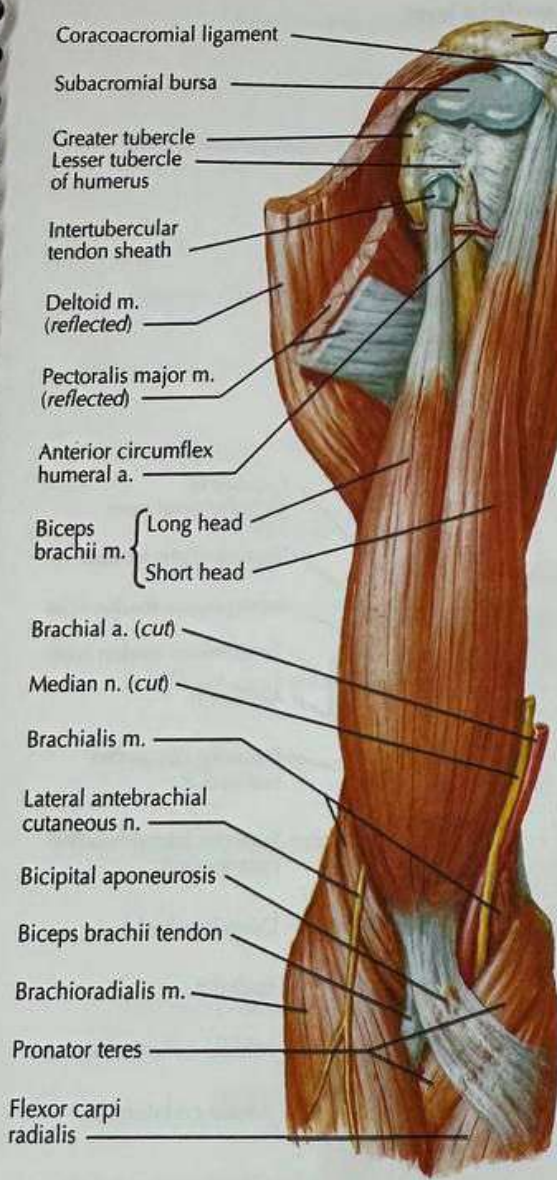
- Teres major m.
- Posterior brachial cutaneous n.
- Medial inter-muscular septum
- Ulnar n.
- Medial epicondyle of humerus
- Olecranon
- Flexor carpi ulnaris
- Anconeus m.
- Extensor carpi radialis longus
- Extensor carpi ulnaris
- Posterior antebrachial cutaneous n.
- Extensor digitorum
- Extensor carpi radialis brevis



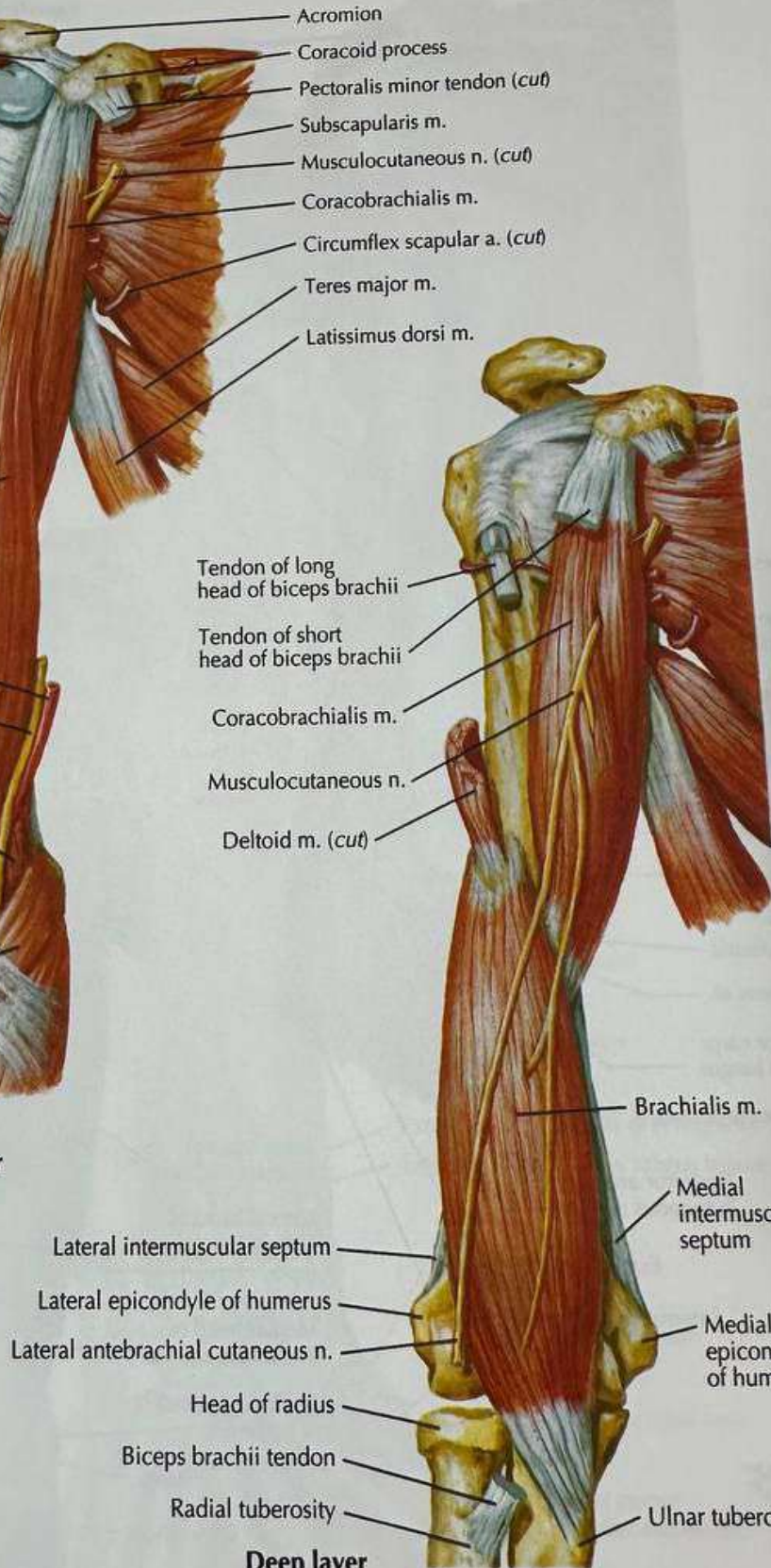
- Capsule of glenohumeral joint
- Supraspinatus tendon
- Infraspinatus tendon (cut)
- Teres minor tendon (cut)
- Axillary n.
- Posterior circumflex humeral a.
- Superior lateral brachial cutaneous n.
- Deep brachial a.
- Radial n.
- Middle collateral a.
- Radial collateral a.
- Inferior lateral brachial cutaneous n.
- Lateral intermuscular septum
- Posterior antebrachial cutaneous n.
- Lateral epicondyle of humerus
- Ulnar n.
- Olecranon
- Anconeus m.
- Long head of triceps brachii m.
- Lateral head of triceps brachii m. (cut)
- Medial head of triceps brachii m.
- Medial epicondyle of humerus
- Ulnar n.
- Olecranon
- Anconeus m.
- Teres major m. and tendon

Deep layer

F. Netter M.D.



Superficial layer



Deep layer

F. Netter M.D.



Subcutaneous olecranon bursa

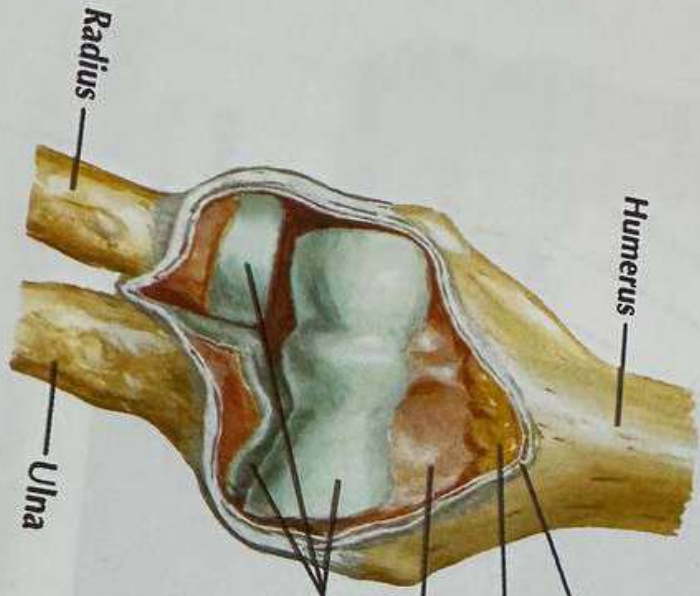
Ulna

Radius



Subcutaneous olecranon bursa

Opened joint:
anterior view

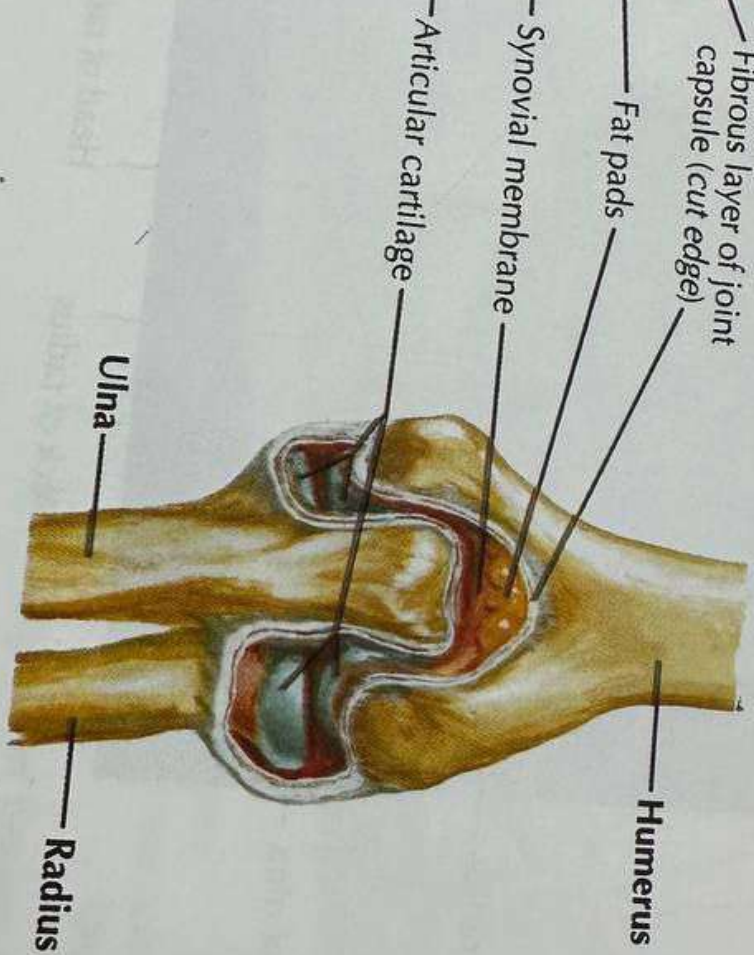


Humerus

Radius

Ulna

Opened joint:
posterior view



Fibrous layer of joint capsule (cut edge)

Fat pads

Synovial membrane

Articular cartilage

Ulna

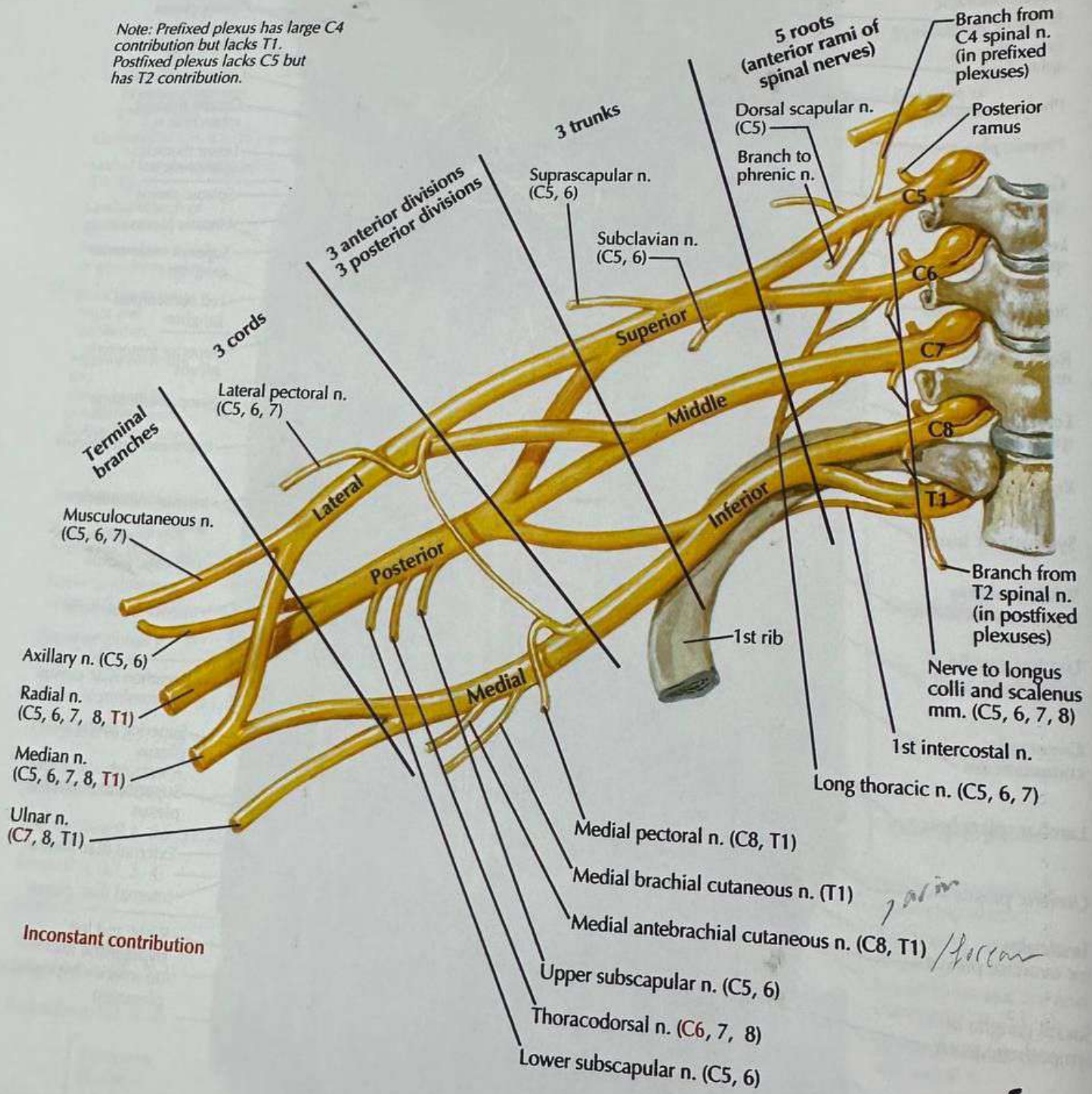
Radius

Humerus

Brachial Plexus: Schema

See also Plates S-107, S-227

Note: Prefixed plexus has large C4 contribution but lacks T1.
 Postfixed plexus lacks C5 but has T2 contribution.



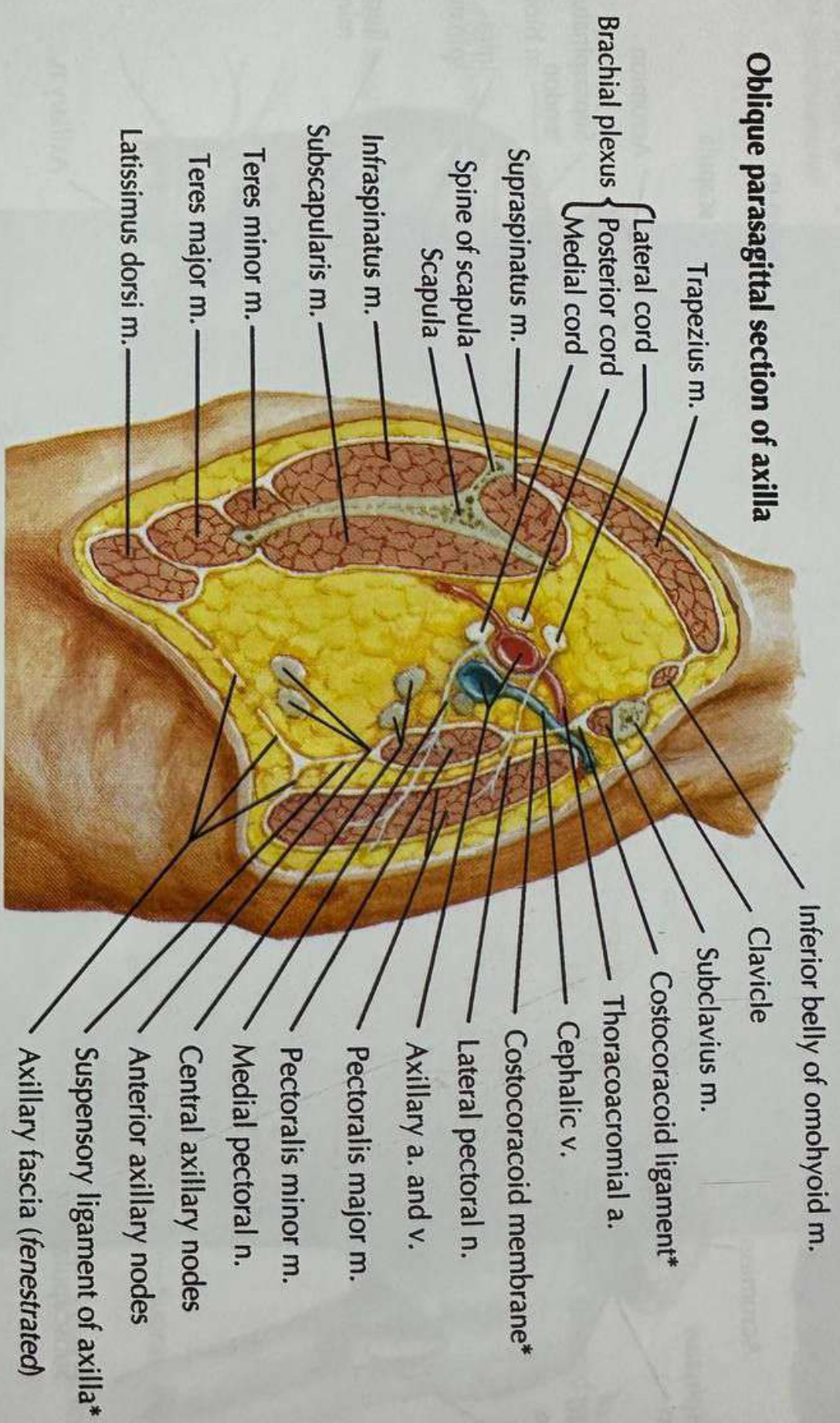
Inconstant contribution

F. Netter

Brachial plexus (cut edge)

Anterior view

Oblique parasagittal section of axilla



*Components of clavpectoral fascia

F. Netter

Subscapularis m.

Subdeltoid bursa

Supraspinatus tendon

Capsular ligament

Synovial membrane

Acromion

Acromio-clavicular joint

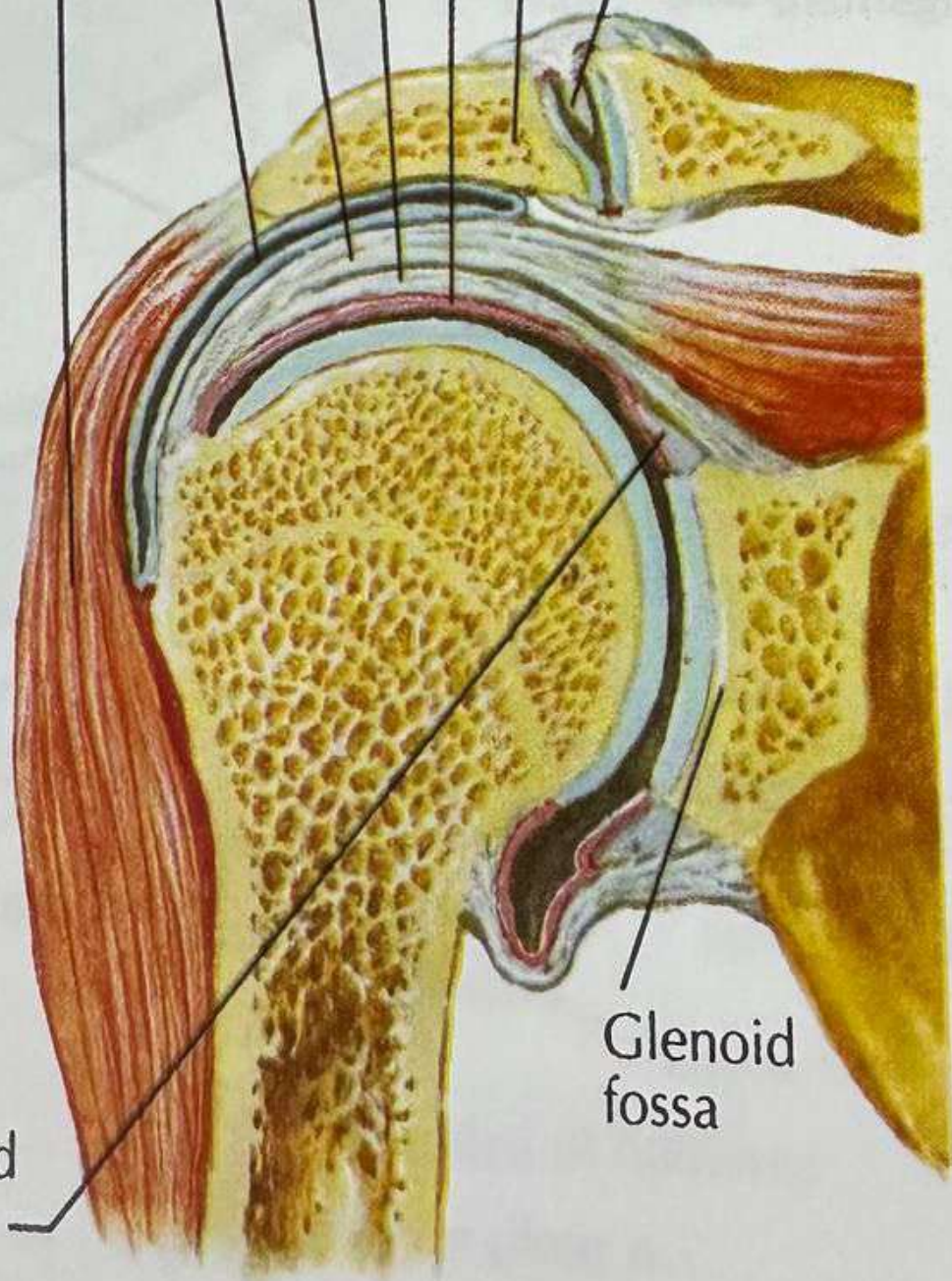
Deltoid m.

gament

ad

eral

on

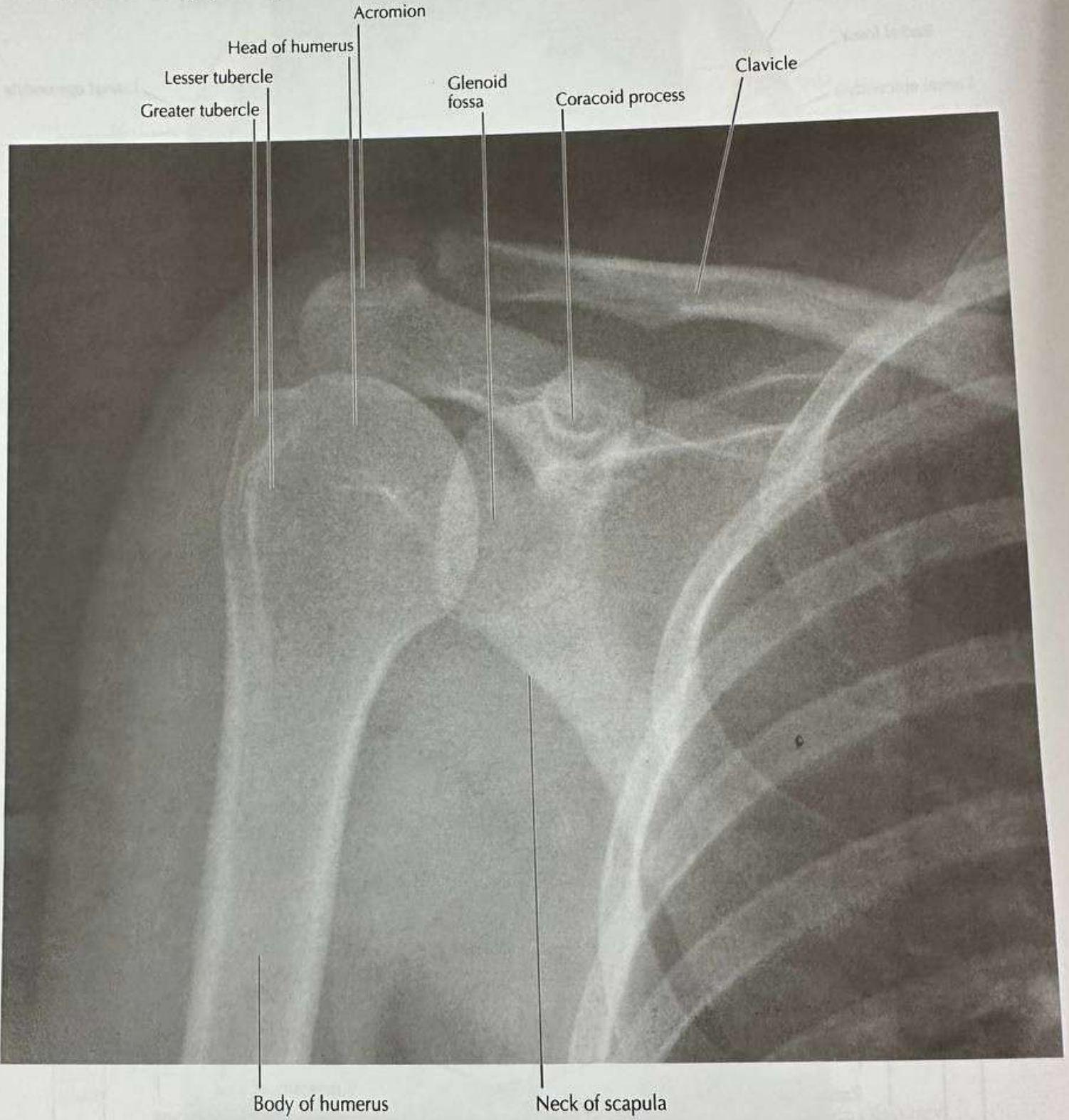


Glenoid labrum

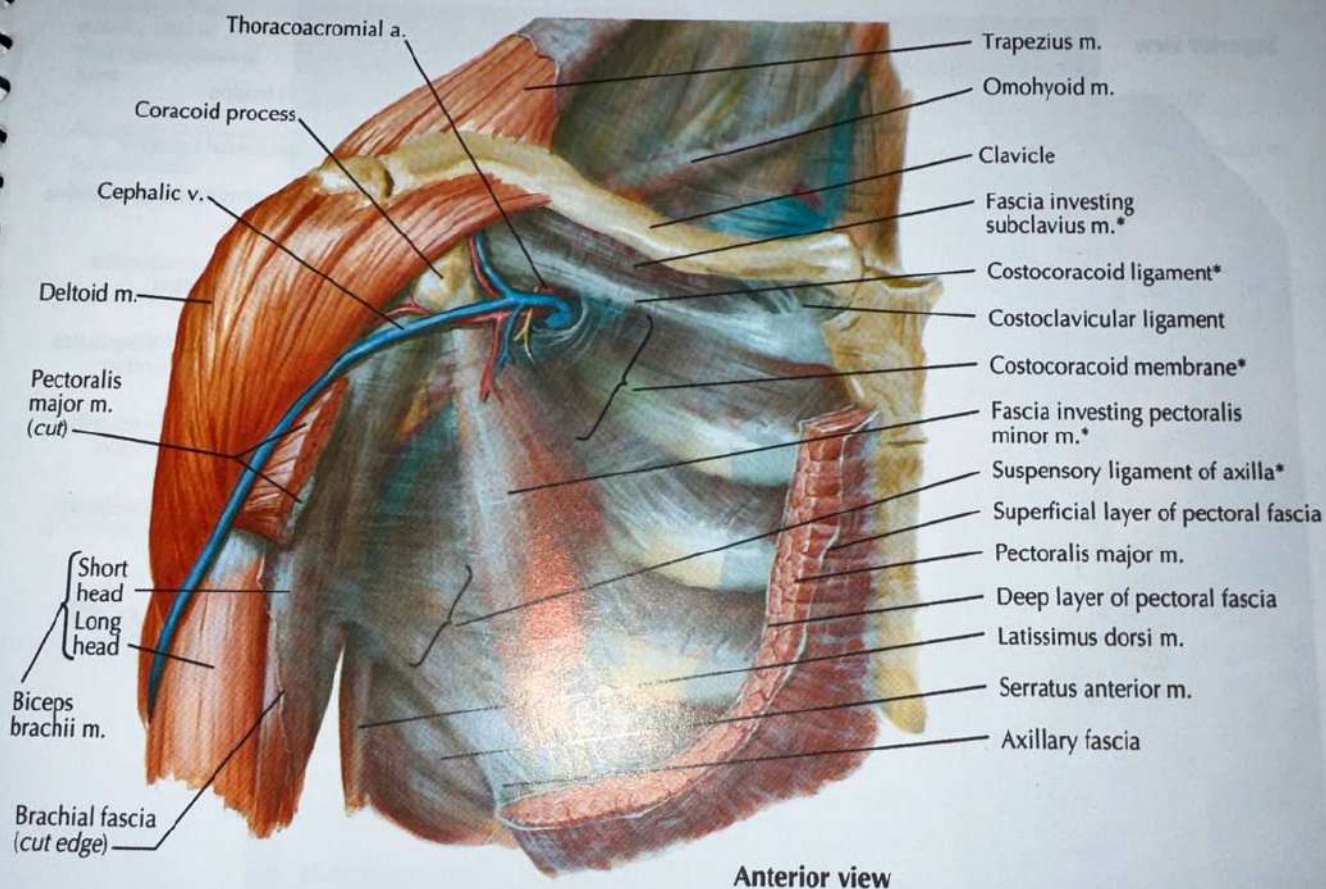
Glenoid fossa

Coronal section through shoulder girdle

Anteroposterior radiograph of right shoulder



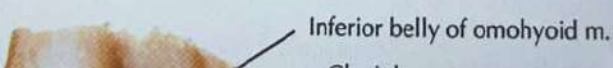
See also Plates S-190, S-196, S-197



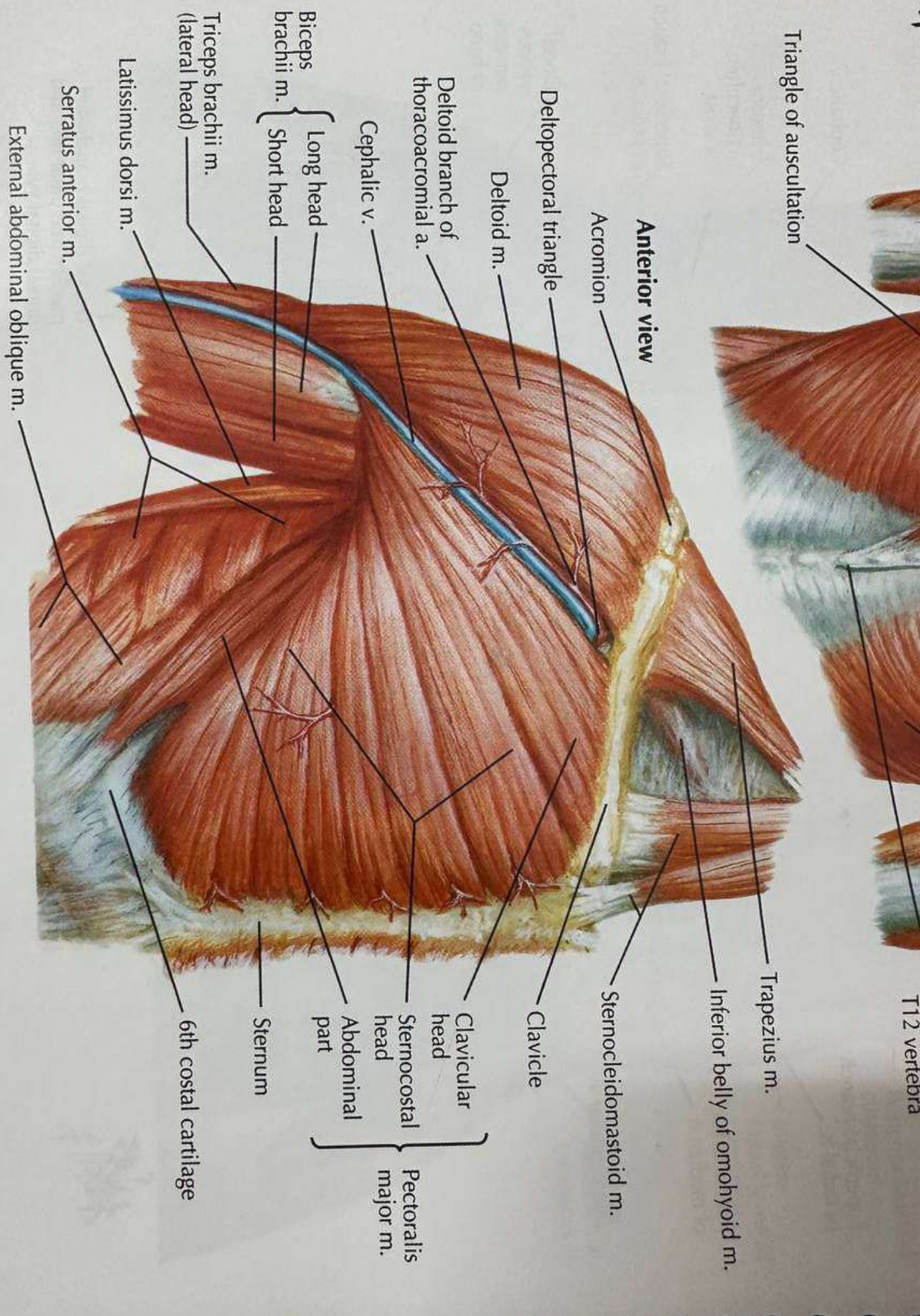
Anterior view

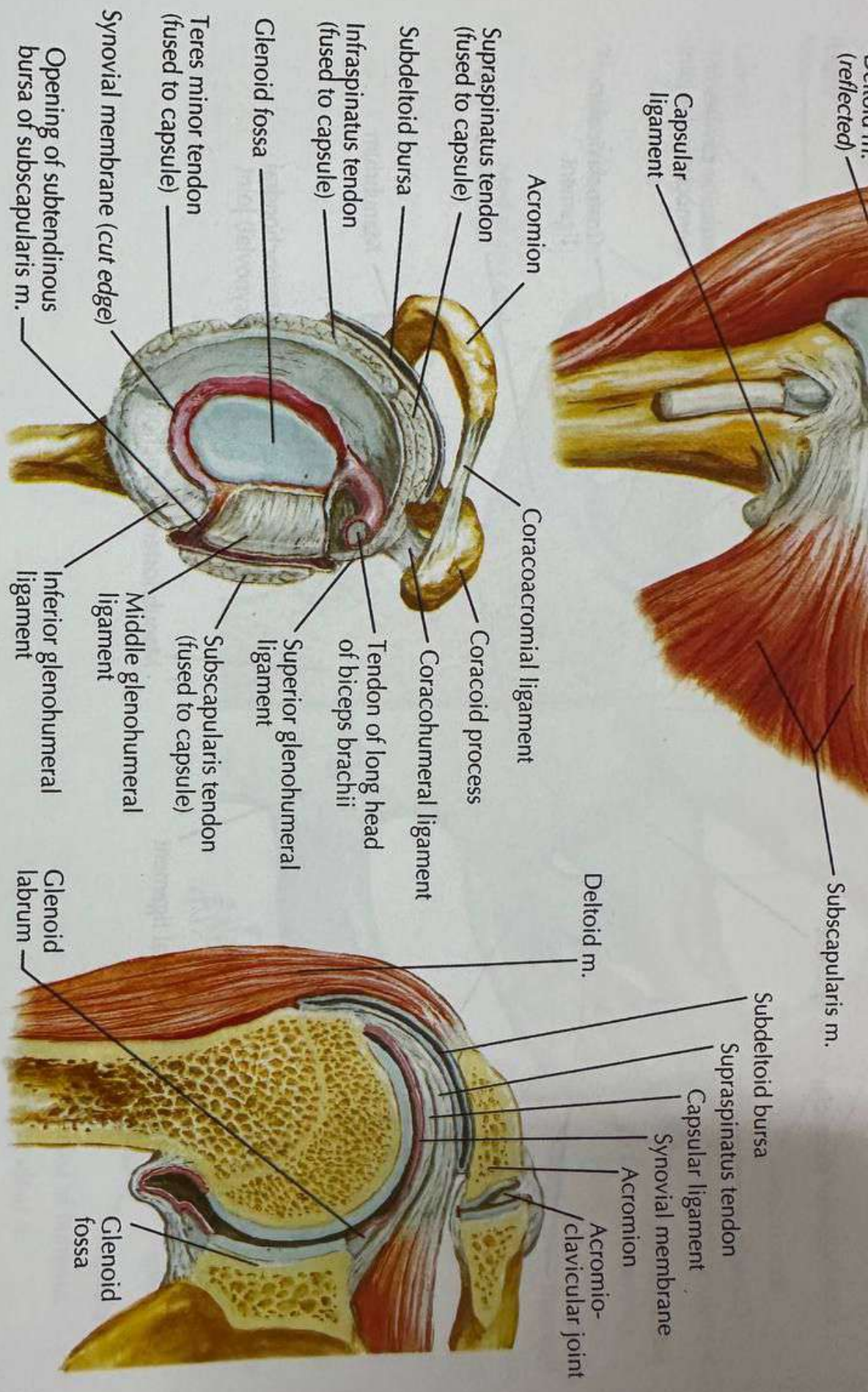
F. Netter M.D.

Oblique parasagittal section of axilla



Inferior belly of omohyoid m.





Joint opened: lateral view

Coronal section through shoulder girdle

Muscles of Shoulder

See also Plates S-199, S-203

Posterior view:
superficial layer

Posterior view:
deeper layer

Triangle of auscultation

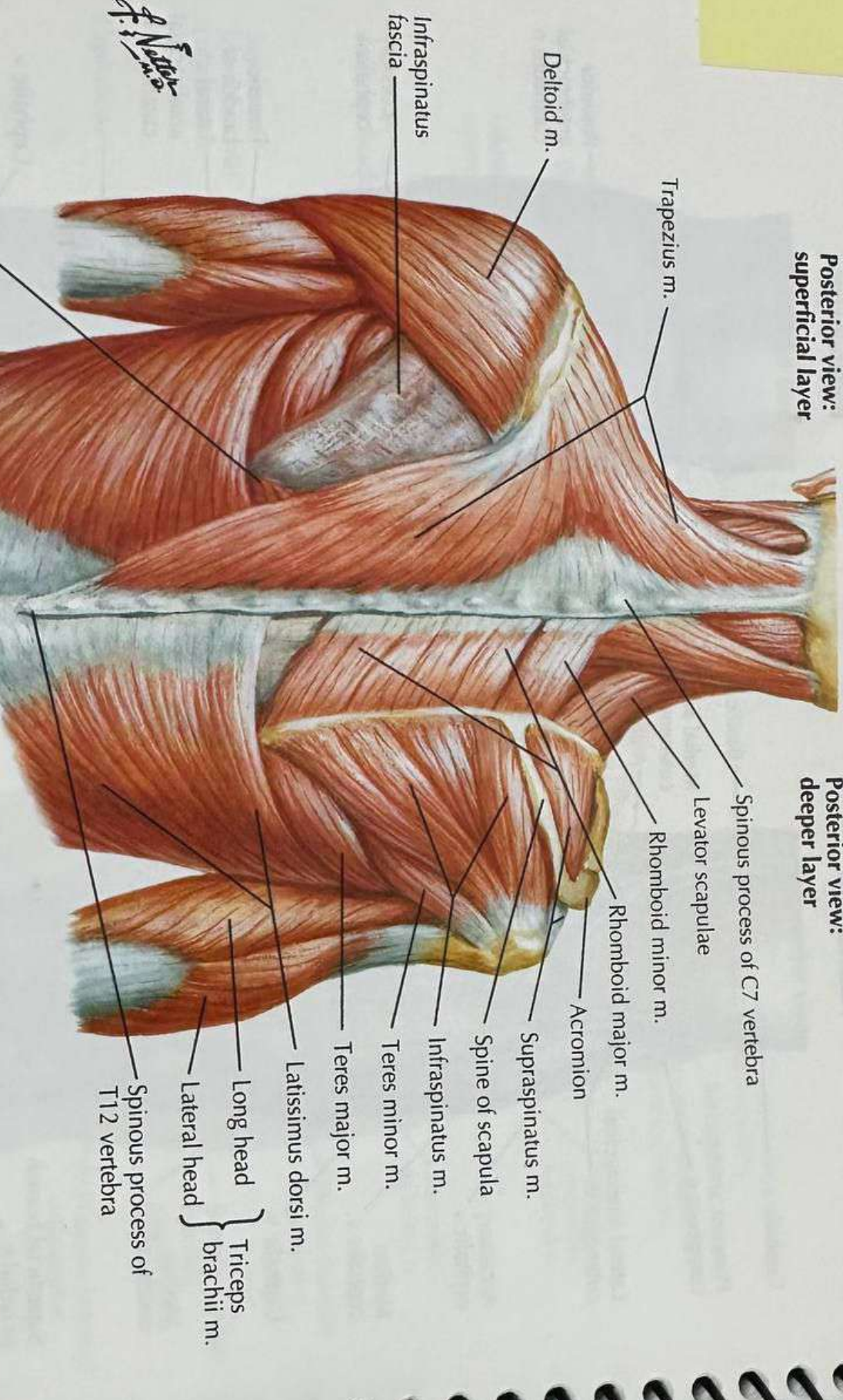
F. Netter

Anterior view



Trapezius m.

Inferior belly of omohyoid m.



Trapezius m.

Deltoid m.

Infraspinatus fascia

Spinous process of C7 vertebra

Levator scapulae

Rhomboid minor m.

Rhomboid major m.

Acromion

Supraspinatus m.

Spine of scapula

Infraspinatus m.

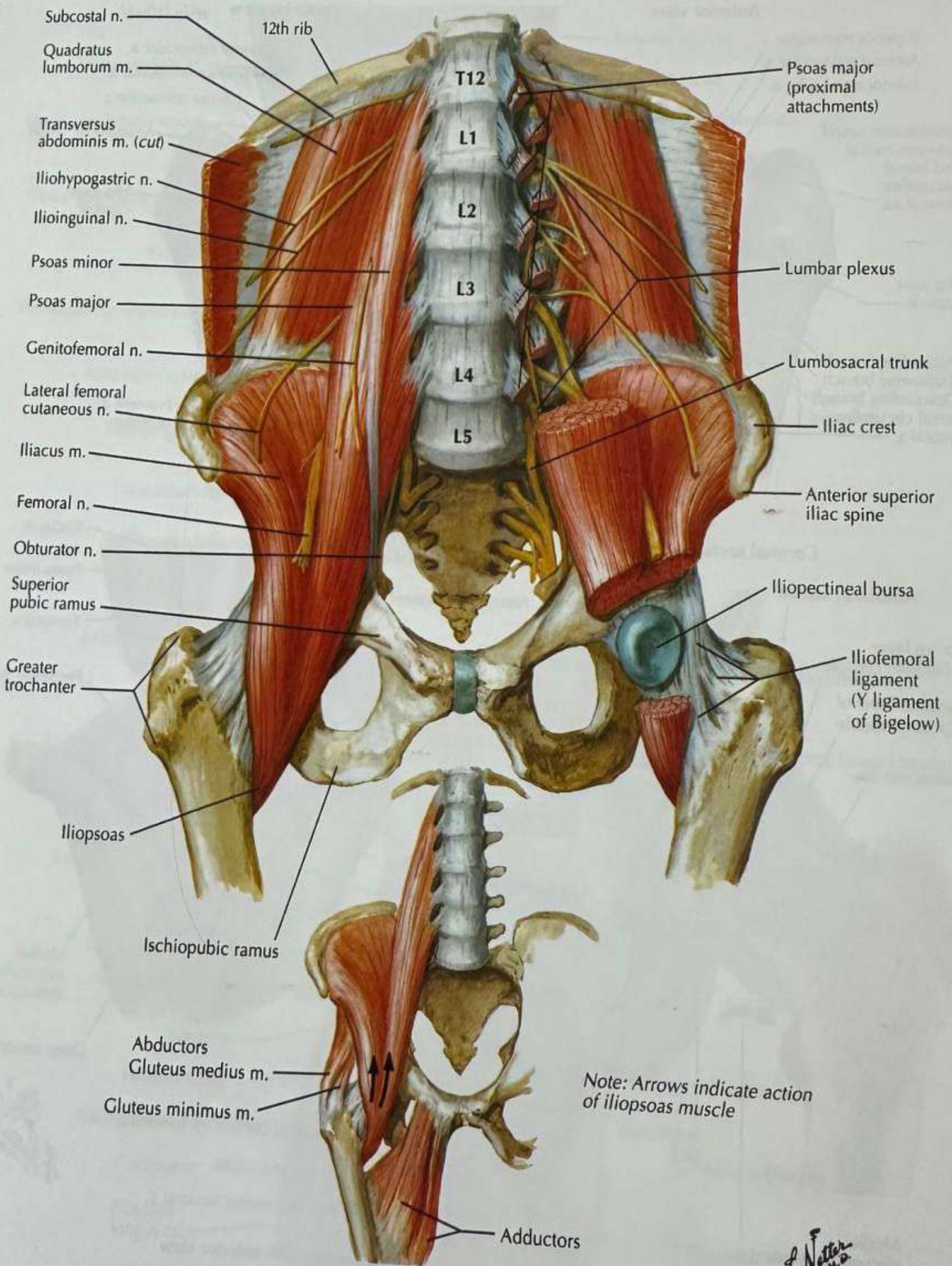
Teres minor m.

Teres major m.

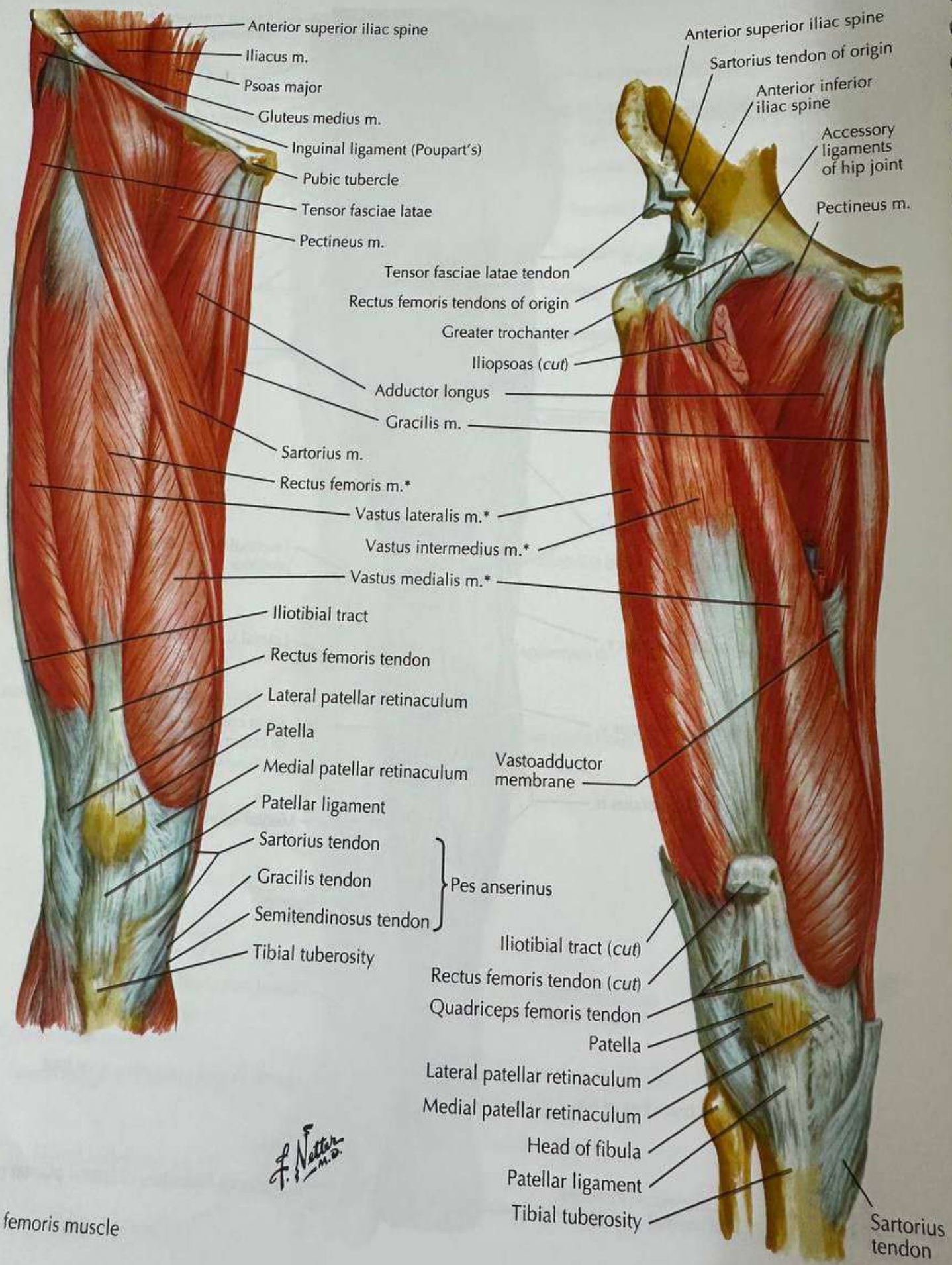
Latissimus dorsi m.

Long head }
Lateral head } Triceps brachii m.

Spinous process of T12 vertebra



F. Netter M.D.



Anterior superior iliac spine
 Iliacus m.
 Psoas major
 Gluteus medius m.
 Inguinal ligament (Poupart's)
 Pubic tubercle
 Tensor fasciae latae
 Pectineus m.
 Adductor longus
 Gracilis m.
 Sartorius m.
 Rectus femoris m.*
 Vastus lateralis m.*
 Vastus intermedius m.*
 Vastus medialis m.*
 Iliotibial tract
 Rectus femoris tendon
 Lateral patellar retinaculum
 Patella
 Medial patellar retinaculum
 Patellar ligament
 Sartorius tendon
 Gracilis tendon
 Semitendinosus tendon
 Tibial tuberosity

Anterior superior iliac spine
 Sartorius tendon of origin
 Anterior inferior iliac spine
 Accessory ligaments of hip joint
 Pectineus m.

Tensor fasciae latae tendon
 Rectus femoris tendons of origin
 Greater trochanter
 Iliopsoas (cut)
 Adductor longus
 Gracilis m.

Vastoadductor membrane

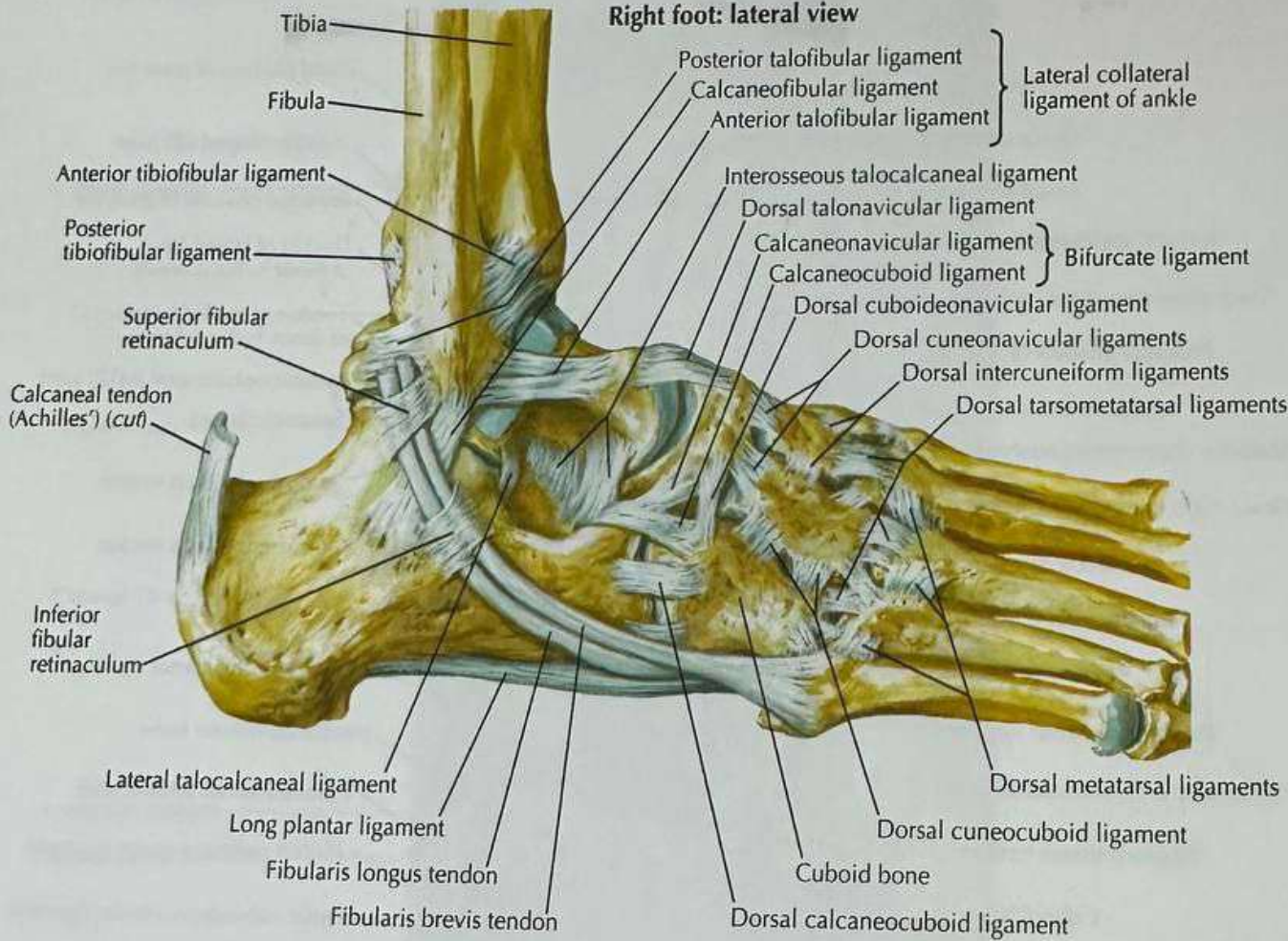
Pes anserinus
 Iliotibial tract (cut)
 Rectus femoris tendon (cut)
 Quadriceps femoris tendon
 Patella
 Lateral patellar retinaculum
 Medial patellar retinaculum
 Head of fibula
 Patellar ligament
 Tibial tuberosity

Sartorius tendon

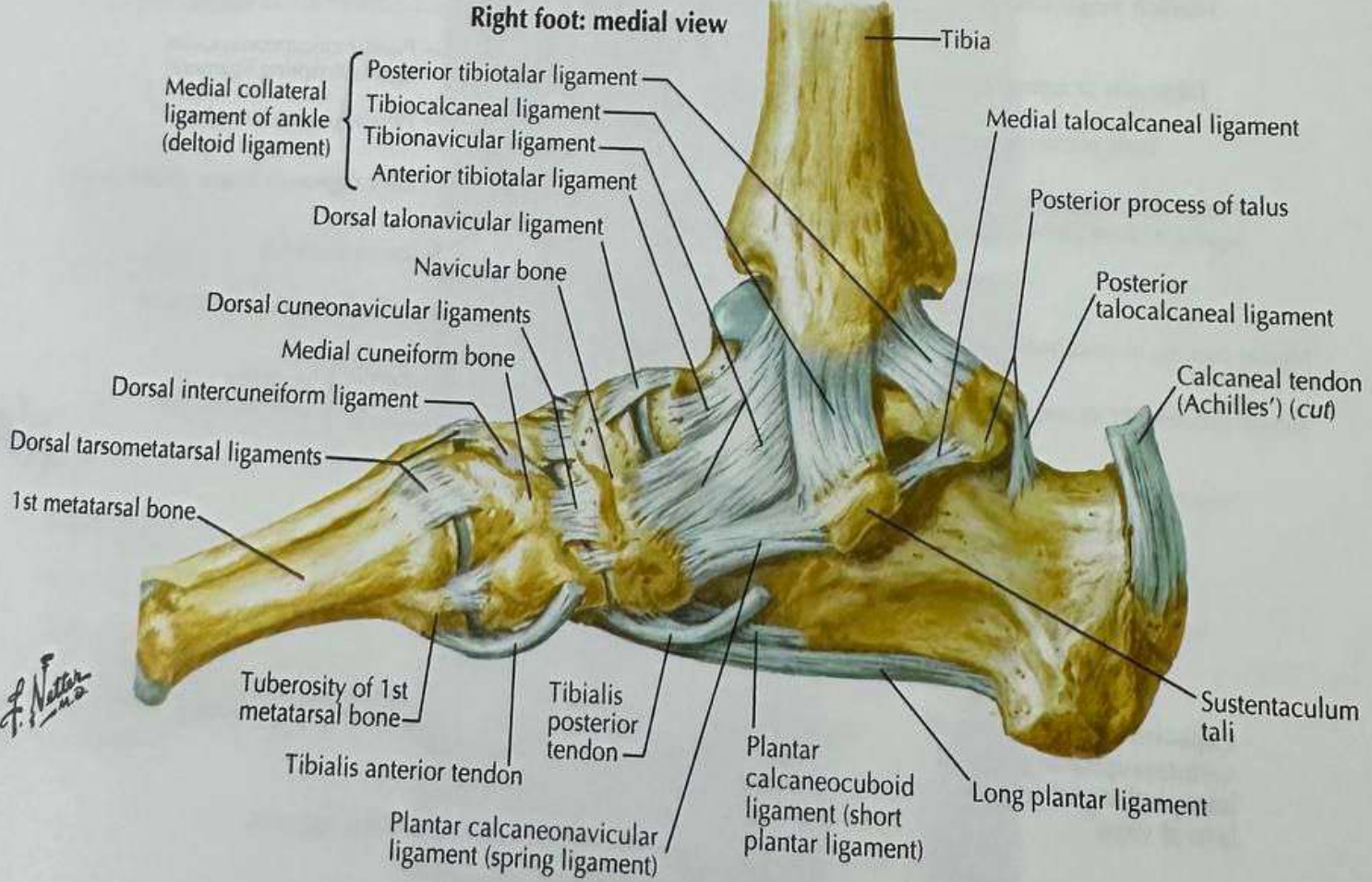
F. Netter M.D.

quadriceps femoris muscle

Right foot: lateral view



Right foot: medial view



F. Netter M.D.