

UGM Practical Revision Slides

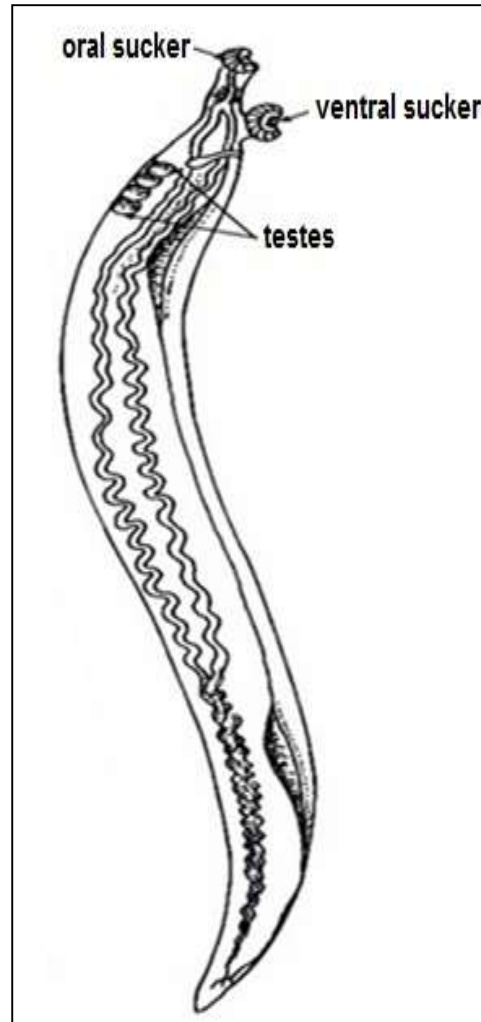
By

Mathhar Ahmad Abu Morad

M.A.Sc.

Schistosoma haematobium male

- ❖ **Cuticle:** Fine tubercle.
- ❖ **Oral & Ventral suckers.**
- ❖ **Tests:** 3-5, big and in a line.
- ❖ **Int. caeca:** reunited posterior gives short single caecum.
- ❖ **Habitat:** small branches of vesical and pelvic venous plexuses.



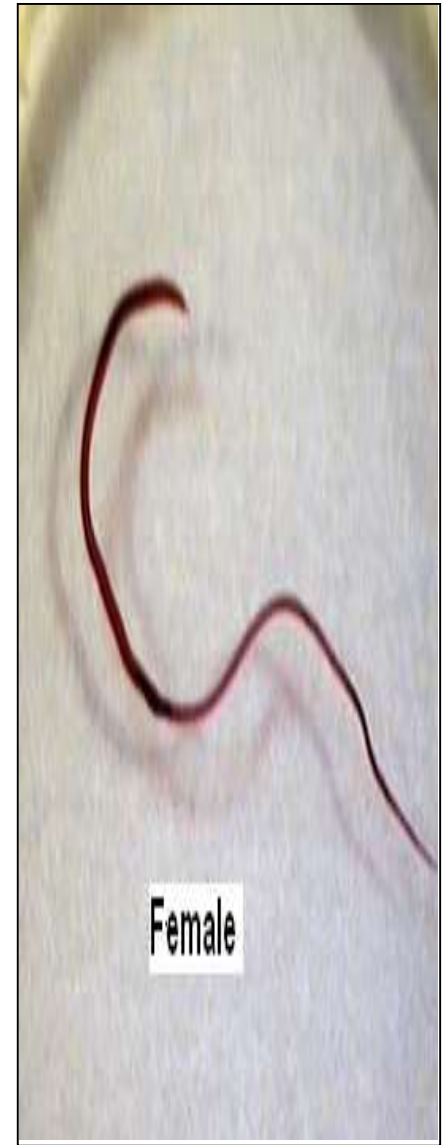
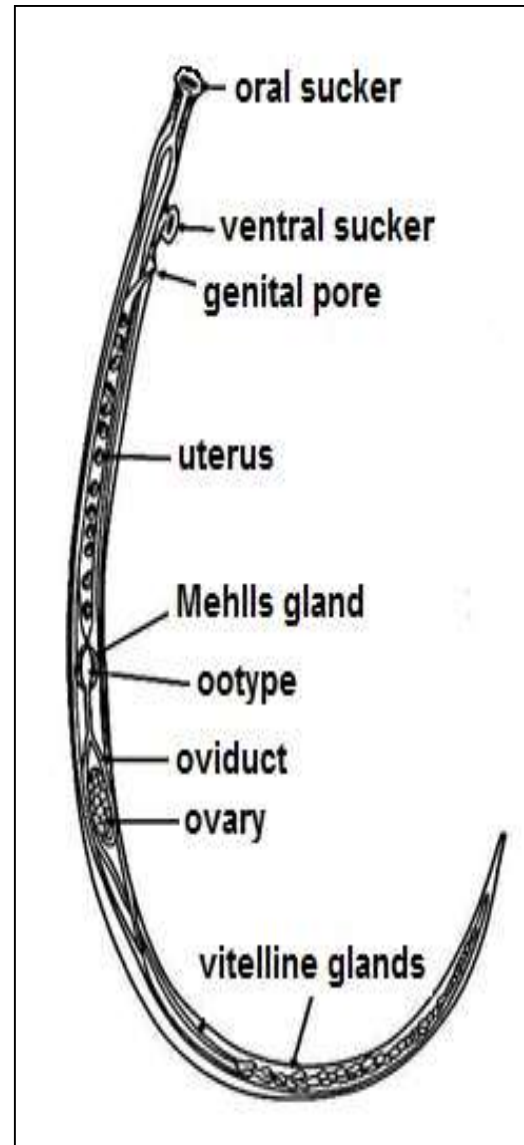
Male



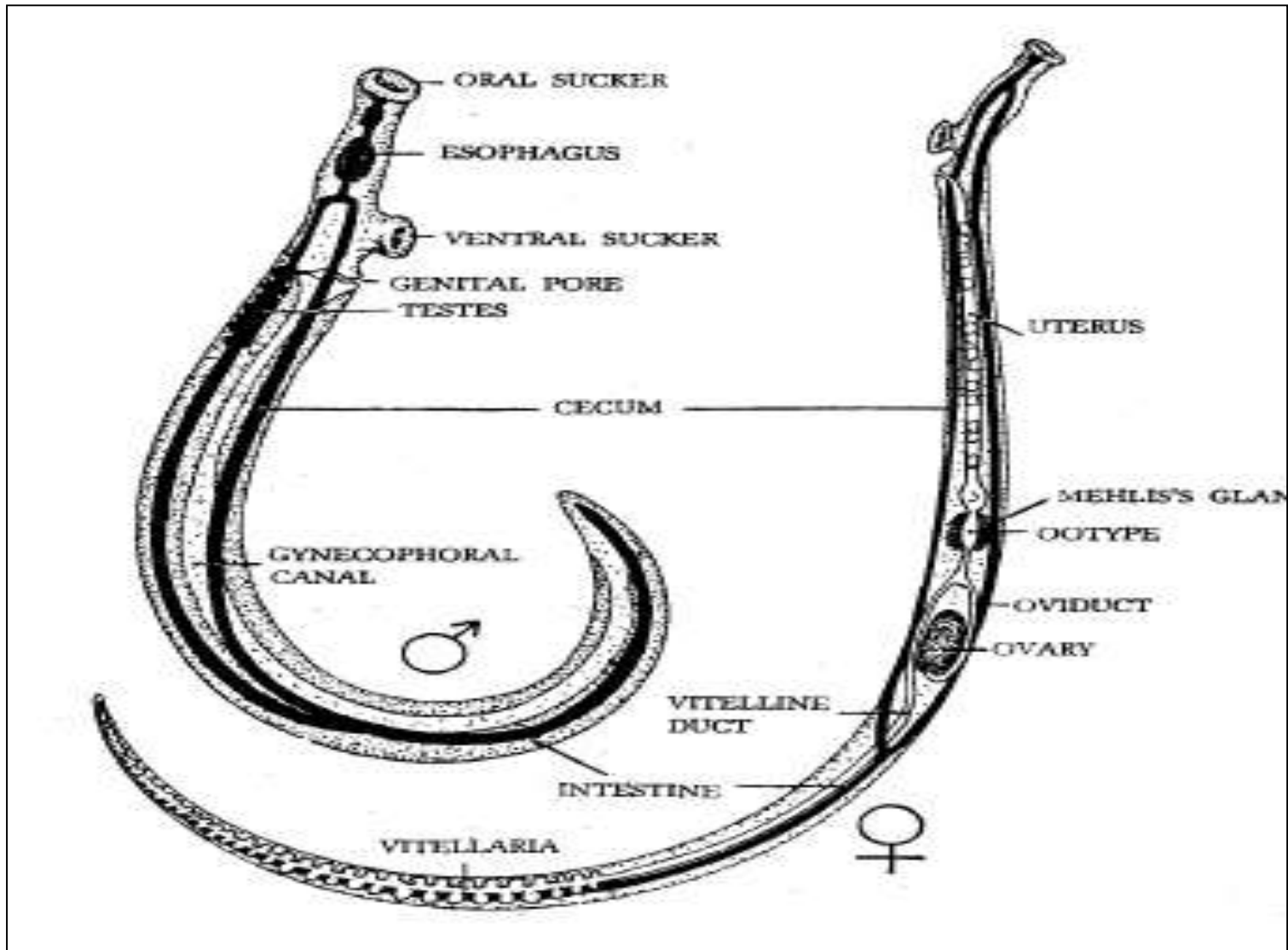
Couple

S. haematobium female

- ❖ **Cylindrical worm**
- ❖ **Ovary:** Posterior 1/3 of the body
- ❖ **Uterus:** Anterior & long.
- ❖ **Vitelline glands:** Small in the post. part of the body around short single caecum.



Schistosoma haematobium male & female



S. haematobium Egg (D.S)

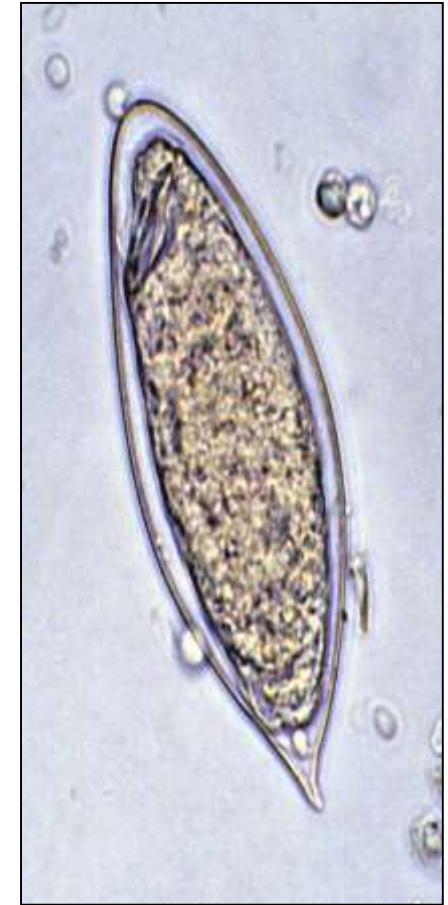
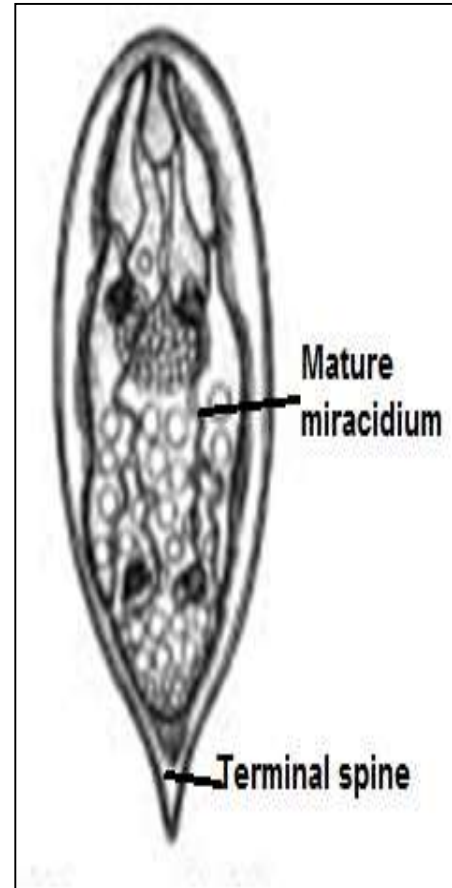
❖ **Shape:** Oval with terminal spine

❖ **Shell:** Thin, non operculated

x operculated

❖ **Colour:** Translucent

❖ **Content:** Mature (fully developed miracidium)



***Bulinus truncatus* snail**

➤ I.H host of *Schistosoma haematobium*

➤ Inside the snail asexual reproduction occurs:

Miracidium ➡

sporocyst ➡ sporocyst

➡ furcocercous cercaria

(no redia stage)



Bulinus truncatus snail



Schistosoma haematobium Cercaria (I.S)

Body : Oral and ventral
suckers, primitive gut
and 5 pairs of penetration
glands.

5/1

Tail : Forked
(Furcocercuscercaria).



Trophozoite of *Trichomonas vaginalis* (D.s & I.S)

Shape: Oval to pear in shape with small cytosome.

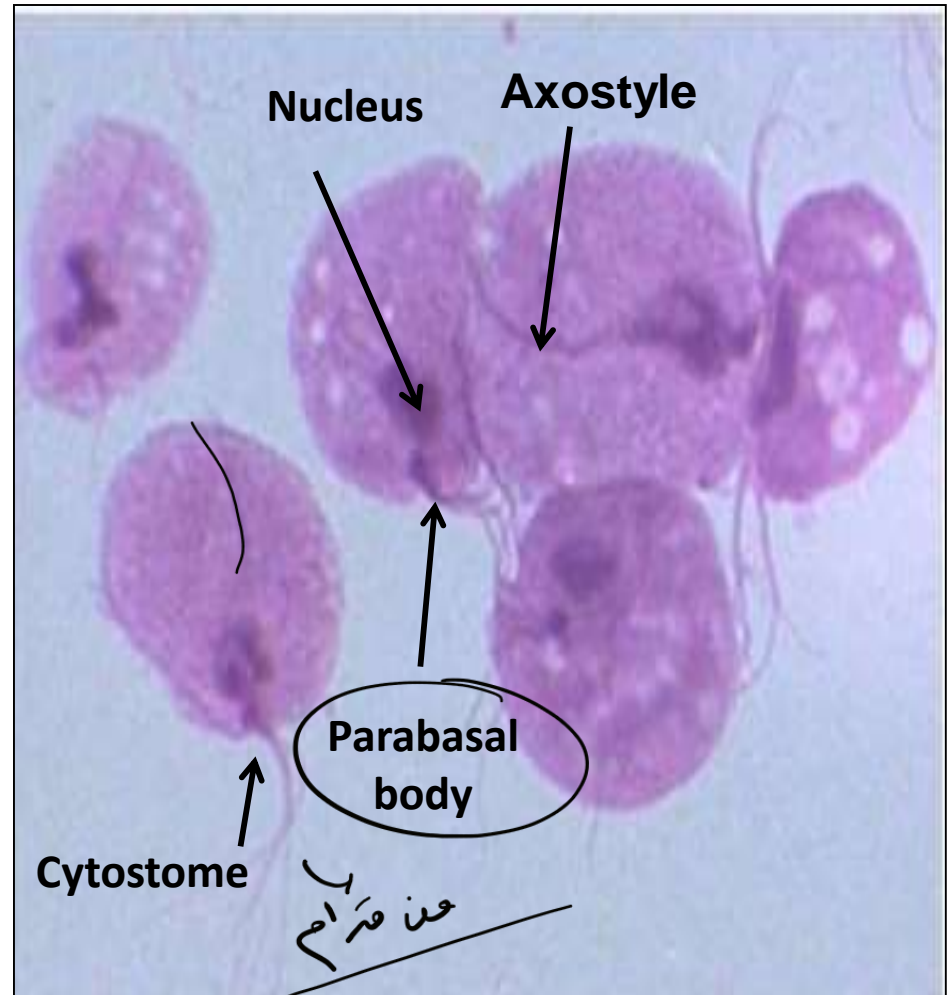
Nucleus: Large oval anterior.

Flagellae : 5 (4 free anterior & one marginal (1/2 body)).

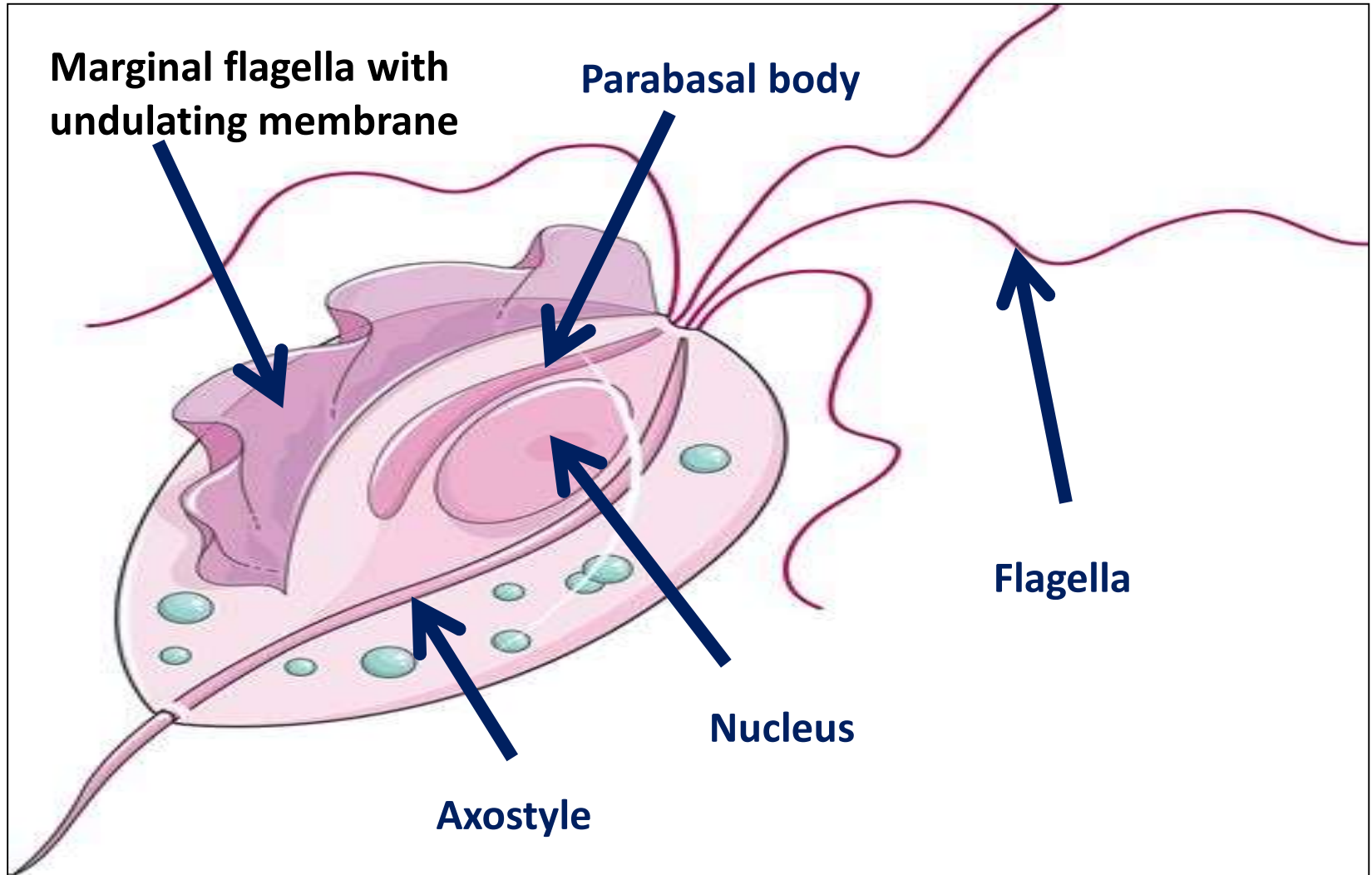
Axostyle: One rod extends beyond the posterior end.

Parabasal body: thick road.

Habitate: Vagina, cervix and urethra in female & prostate and urethra in male.



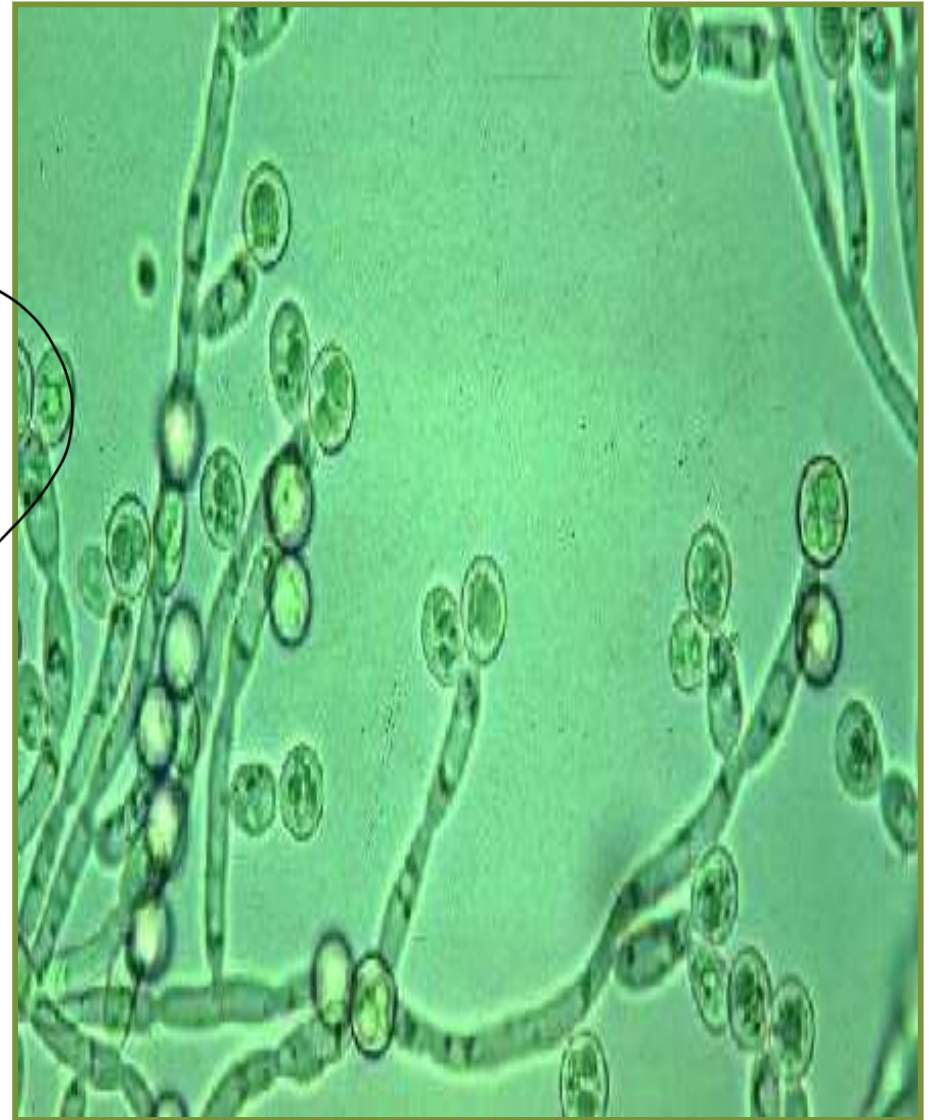
Trophozoite of *Trichomonas vaginalis* (D.S & I.S)



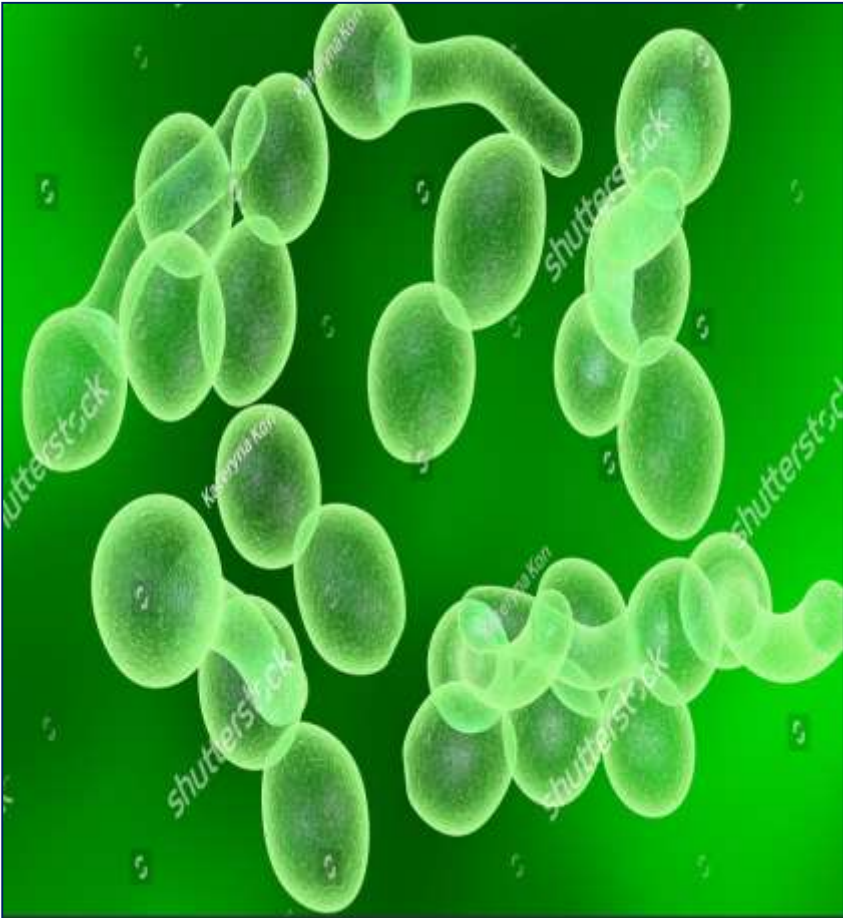
Candida albicans

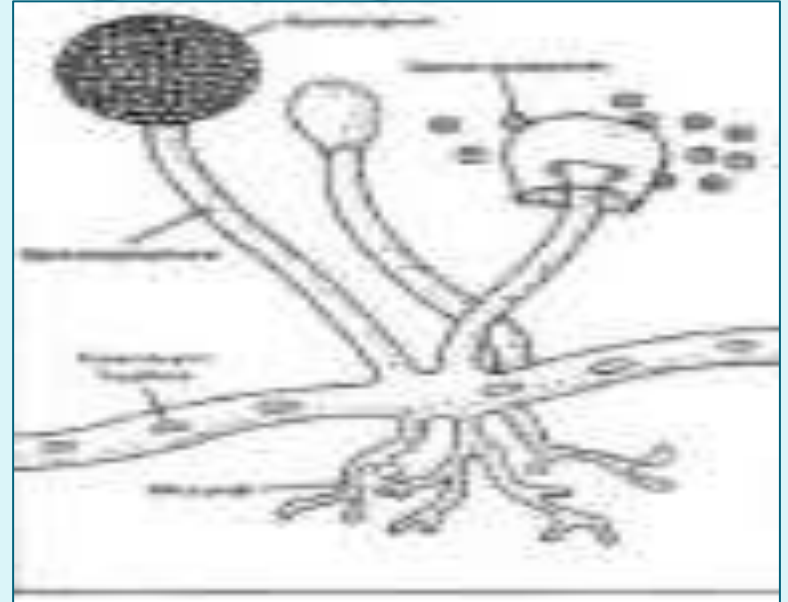
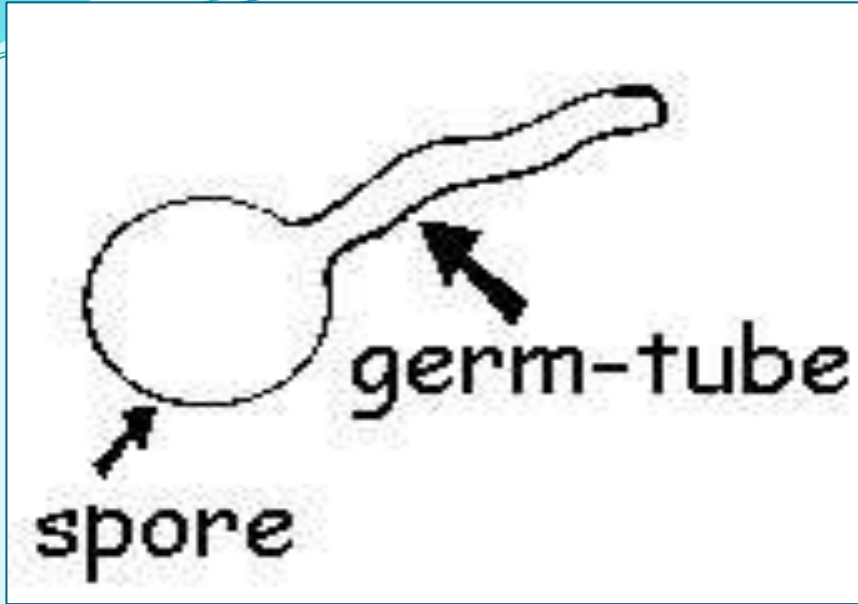
True oval

- ❖ **Oval gram positive.**
- ❖ **Budding yeast which produce pseudohyphae.**
- ❖ **It ferments glucose & maltose with acid & gas production.**
- ❖ **Terminal Chlamyospore** is formed on corn meal agar.
- ❖ **Germ tube** is formed when cultured colonies is incubated with human serum at 37 C for 30 min.



Germ tube production





Germ tube test: germ tube is formed when cultured colonies is incubated with human serum at 37 C for 30 min.

Terminal Chlamydospore is formed on corn meal agar.

This image shows?

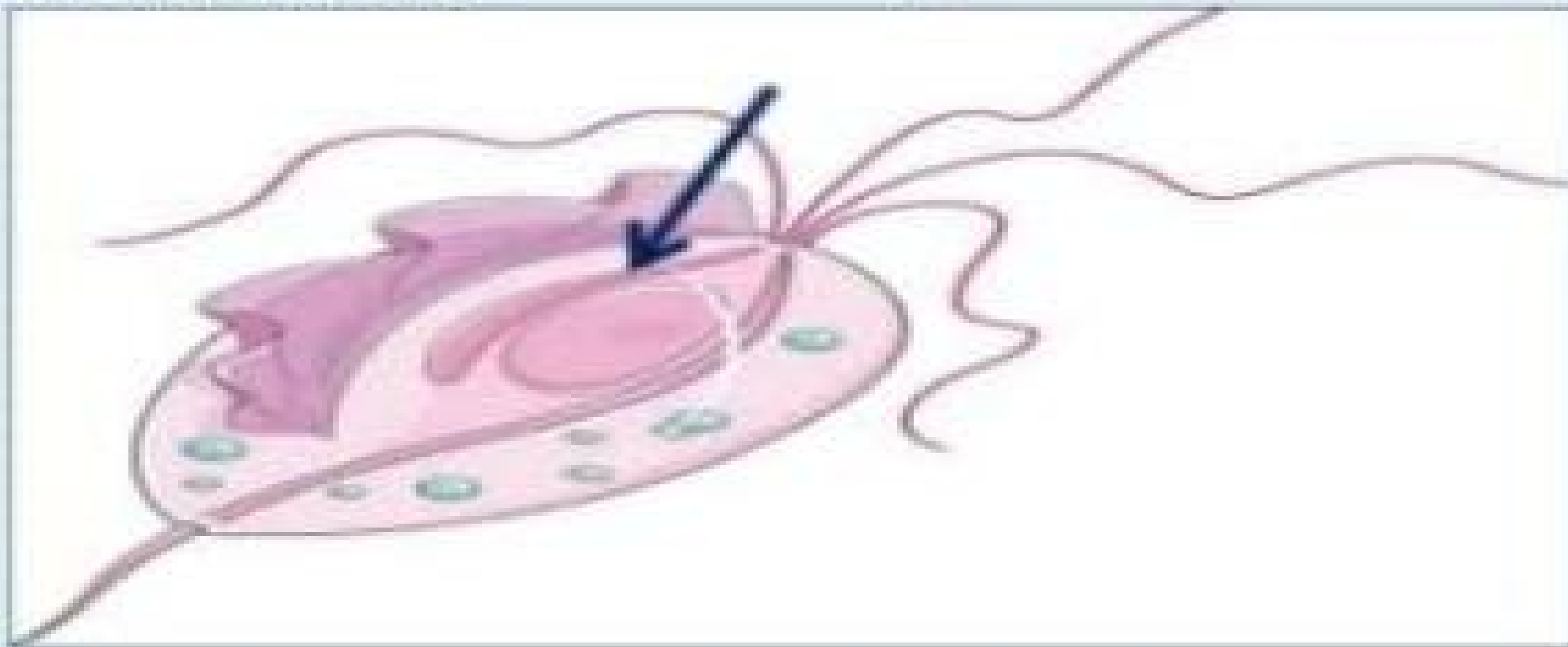


Select one:

- a. Group A streptococci.
- b. *N. gonorrhoeae*.
- c. *T. pallidum*.
- d. Group B streptococci.
- e. *Candida*.

Activa
Go to Se

Arrow points to _____ ?



Select one:

- a. Cytostome.
- b. Flagella.
- c. Parabasal body.
- d. Axostyle.
- e. Nucleus.

Choose the correct one _____?

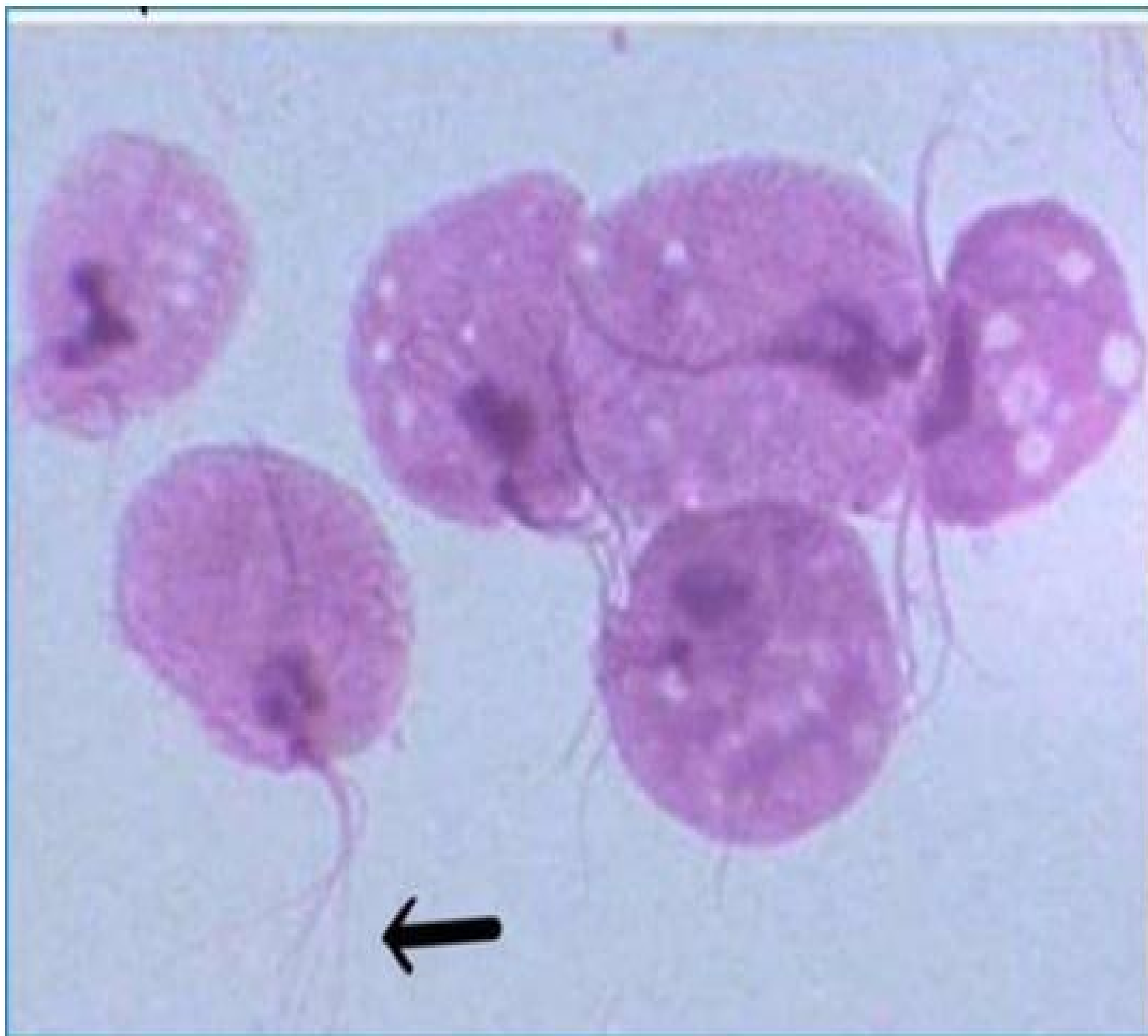


Select one:

- a. Lophocercous cercaria.
- b. Leptocercous cercaria.
- c. Microcercous cercaria.
- d. Furcocercous cercaria.
- e. Encysted cercaria.

Acti
Go to

16- Bacterial culture from Midstream urine sample



- a. Cytostome
- b. Flagella ✓