

Edited by
Anna R. Dover
J. Alastair Innes
Karen Fairhurst

Macleod's

15th Edition



Clinical
Examination

ARCHIVE

Introduction to clinical years

SUBJECT :

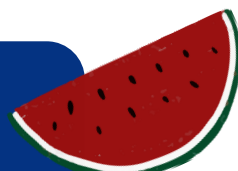
GENERAL ASPECTS OF EXAMINATION

Done by:

AYA ABU SAMRA
RANA TARAWNEH



الطب الجراحة
لجنة



1) Which of the following terms is used to describe bad mouth odor?

- A. Xerostomia
- B. Dysgeusia
- C. Aerophagia
- D. Halitosis
- E. Lichen Planus

Answer: D

2) Regarding Finger Clubbing, all are true except?

- A. Painful
- B. It is a soft tissue swelling of terminal Phalanges
- C. Schamroth's window sign is absent
- D. The angle increases to 180 or more, and the nail bed feels spongy
- E. can occur in malignancy

Answer: A

3) All of the following are common causes of chest pain except one:

- A. Myocardial infarction
- B. Angina
- C. Pericarditis
- D. Aortic dissection
- E. Heart failure

Answer: E

4) What is false about Cyanosis?

- A. Usually indicates a venous oxygen saturation of less than 90%
- B. It is easily curried by blood transfusion
- C. always indicates anemia
- D. Usually indicates an arterial oxygen desaturation of less than 10%
- E. can be seen in congenital heart disease

Answer: C

5) Unintentional weight loss is defined as:

Select one:

- A. Loss of more than 10% body weight over 1 year
- B. Loss of more than 5% body weight over 6 months
- C. Loss of more than 15% body weight over 6 months
- D. Loss of more than 10% body weight over 6 months
- E. Loss of more than 15% body weight over 1 year

Answer: B

6) Chest wheezes occur in the following? Select one:

- A. Pleural effusion
- B. pneumonia
- C. Interstitial pulmonary fibrosis
- D. Bronchial asthma
- E. Pneumothorax

Answer: D



7. ALL make hyperpigmentation EXCEPT:

- * A.hemochromatosis
- * B.Addison
- * C.cushing
- * D.alopecia

Answer: D

8)Defect in facial expression apathy, pale and puffy skin are signs of :

- * A.hyperthyroidism
- * B.parkinson's disease.
- * C.hypothyroidism
- * D.addisson's disease
- e.hypothyrodism.

Answer: C

9)A sign of chronic iron deficiency in nails is:

- A.leukonychia
- * B.koilonychia
- * C.splinter hemorrhage
- * D.clubbing

Answer: B

10)All of these are true regarding general examination Except:

- * A.usually examine him from the right side
- * B.hand and face are important to examine
- * C.it begins after the formal presentation and handshaking with patient
- * D.facial expression is important
- * E.you should ask yourself" does this patient look well

Answer: C

11)Which is false about eye examination:

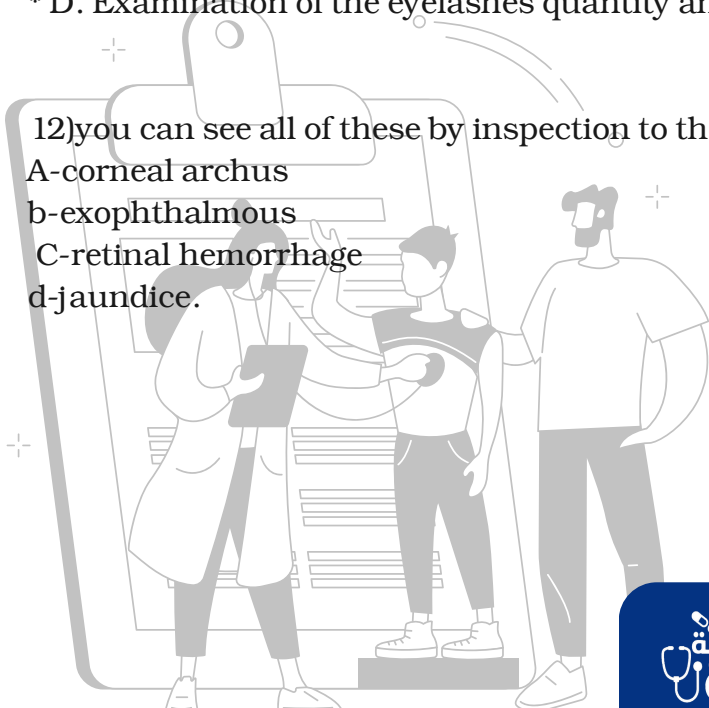
- A .The upper lid should follow the eyeball downwards.
- * B.The upper lid covers most of the cornea.
- * C.Examination for adequacy of closure.
- * D. Examination of the eyelashes quantity and distribution.

Answer: B

12)you can see all of these by inspection to the eye Except:

- A-corneal archus
- b-exophthalmous
- C-retinal hemorrhage
- d-jaundice.

Answer: C



الفريق الأكاديمي

13) Hot and sweaty hands are seen in:

- A-hyperparathyroid.
- B-hypothyroid.
- c-regular water exposure.
- d-anxiety .
- E. hyperthyroidism

Answer: E

14) All are true regarding general examination,

- a. for any intimate examination should always offer chaperone to prevent misunderstanding.
- b. collect together all equipments you need before starting the examination.
- C. avoid unnecessary exposure or embracement.
- D. ask the child's parents to leave the room when examining the child.
- e. the room should be warm & well lit.

Answer: D

15) Large sweaty fleshy hand indicate:

- A-acromegaly
- B-hypothyroidism
- c-hyperthyroidism

Answer: A

16) which of the following is mis-matched :

- a. vitiligo hypopigmentation
- b. cushing's syndrome..... central obesity
- c. diabetic ketoacidosis..... acetone smell breath
- d. marfan's syndrome micrognathia
- e. SLE..... butterfly rash

Answer: D

17) All of the following disease have hyper-pigmentation, Except?

- A-Vitiligo
- B-Addison disease
- C-cushing disease
- D-melanoma
- E-hemochromatosis

Answer: A

18) A patient presented to the clinic complaining of weight loss, you should ask him "firstly" about :

- A-if it's intentional or not.
- *B -what about appetite
- *C -polyuria, polydipsia
- * D-nervousness and palpitation

Answer: B



19) pale face by all of the following EXCEPT:

- * -hypovolemia
- * -carcinoid
- * -fear

Answer: C

20) Patient with anorexia, general weakness, & fever, which is the most likely system involved :

- a. CVS.
- b. ES.
- C. HLS.
- d. all systems.

Answer: D

21) Which one is mismatched between symptom & system involved:

- a. Palpitation - heart.
- * B. Albinism - skin.
- * C. hunger pain - renal.
- * D. cyclical pain - breast.
- E. sneezing - nose.

Answer: C

22) Hirsutism is seen in all Except:

- * A. Cushing's syndrome
- * B. acromegaly
- * C. polycystic ovarian syndrome
- * D. hypothyroidism

Answer: D

23) The best site to look for jaundice is:

- A. upper part of the sclera
- B. mucus membrane
- C. tongue
- D. lower part of sclera
- E. palmar creases

Answer: A

24) wrong mismatch:

- a. hemoptysis: pain with coughing.
- B. hematochezia: menstrual bleeding.
- c. a and b

Answer: C

25) a patient presented to the clinic complaining of weight loss, you should ask him about :

- * A. if its intentional or not
- * B. what about appetite polyuria,
- * C. polydipsia nervousness and palpitation
- * D. all of the above

Answer: D



26.



- A.marfan syndrome
- B. Osteogenesis imperfect
- C.systemic sclerosis
- D. Down's syndrome

Answer: A

27.



- A.Hypercarotenaemia
- B.vitiligo
- C.albinism

Answer: B

