

Urology Mini-Osce Archive

1

❖ What is the name of this test ?

- Transillumination test

❖ What is your diagnosis ?

- Hydrocele



❖ What is your diagnosis ?

- Varicocele



*Treatment of epididymitis

*Bell clapper deformity associated with

2

- 1- site of production of semen
- 2- site of action of alpha blocker
- 3- which part more liable to injury by pelvic fracture
- 4- imaging study for urethral trauma
- 5- site of production of PSA

3

Diagnosis



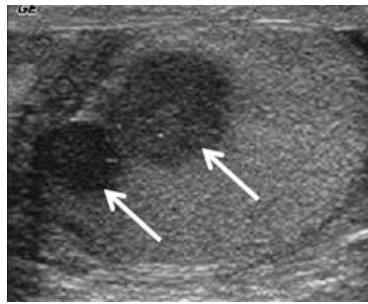
4

The most common tumor
Syndromes associated with tumours

❖ What's the gold standard management?

5

Diagnosis
Differential diagnosis
Markers



6

➤ Newly married **female** with fever, frequency, urgency, dysuria. (Note: UTIs more common in females)

❖ **What is your diagnosis ?**

○ Acute cystitis

❖ **Simple diagnostic tests to assure your diagnosis:**

○ Urine analysis, urine culture and sensitivity, CBC

7

Diagnosis
Associated congenital anomalies
Complications of surgery



8

Triametrene.... drug induced stone
Uric acid stone... acidic urine
Struvite... with urease producing organism
Cystine ... with autosomal recessive disorder
Calcium oxalate ... radiopaque stone