

Athar

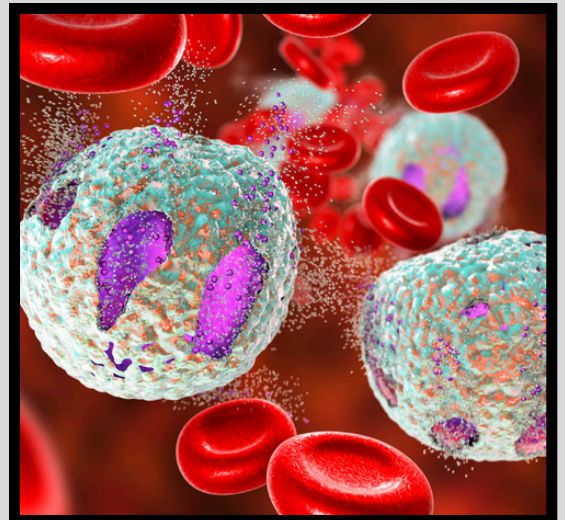
Pathology Mid

Done By:

rahaf mohammed
hadeel albtoush

Designed By :

Raneem Dmour



1) Most abundant type of inflammatory cells seen in liquefactive necrosis:

- a. Neutrophils**
- b. Lymphocytes**
- c. Eosinophils**
- d. Monocytes**

Answer: a

2. which the following is not correct about fibrinoid necrosis:

- a. morden of pathology**
- b. deposition of fibrin-like material within blood vessel walls.**
- c. It often occurs in immune-related diseases .**
- d. Fibrinoid necrosis can lead to disruption of blood vessel integrity, potentially causing hemorrhage or tissue ischemia.**

Answer: a

3. what is the definition of pathogenesis?

- A) the process by which a disease develops and progresses within the body, including the biological mechanisms that lead to the appearance of symptoms and physiological changes caused by the pathogen.**
- B) the ability of an organism to resist or defend against harmful microorganisms or toxins.**
- C) The study of microorganisms, which are tiny living organisms like bacteria, viruses, fungi**

Answer: a

4. from these which the most important role in the Extrinsic pathway?

- a) Caspases8**
- b) Caspases9**
- c) Caspases10**
- d) Caspases12**

answer: a



5. In the well-sutured skin wounds, strength may recover

- a) 70%-80%
- b) 20%-50%
- c) 19%-34%
- d) 100%

Answer: a

6. All about the Myocardial Infarction are true except?

- a) Death: 20-30 minutes
- b) EM: 2-3 hr
- c) LM: 4-8hr
- d) Gross: 12-24hr

Answer: C

7. Granuloma includes all the following except?

- a) Rheumatoid arthritis
- b) Crohns disease
- c) Acute staphylococcal infection
- d) TB

Answer: C

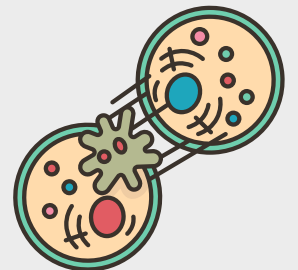
8. Most common form of necrosis?

- a) coagulative
- b) Liquefactive
- c) Fat

Answer: a

9. example about the Pathological hypertrophy

hypertension in cardiomyopathy



10. All of the following is related to anatomic pathology except?

- a) Molecular pathology
- b) Neuro pathology
- c) Dermato pathology
- d) Forensic pathology

Answer: a

11. the most important action when you take a biopsy?

- a) H&E stain
- b) Special stain
- c) Molecular weight

Answer: C (مش أكديد)

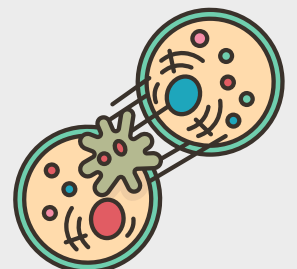
12. An 8 year old boy cuts his hand on a piece of glass. Tow days later there is an open sore surrounded by swelling. His forearm is tender with red streaks extending towards the axilla. What is the most likely diagnosis?

- a) Inflammatory lymphadenopathy
- b) Reactive lymphadenopathy
- c) Lymphangitis
- d) Lymphadenitis

Answer: C

13 Cachexia: it's a pathologic state characterized by weight loss, muscle atrophy, and anorexia. So what is the responsible for this situation

Answer: TNF



14. Not of proapoptotic proteins ?

- A-Bak**
- B-Bax**
- C-BCL-2**

Answer: C

15. First step in healing is?

- A-inflammation**
- B-ECM deposition**
- C- blood clot formation**
- D- remodeling**
- E- formation of granulation tissue**

Answer: C

16. What changes happen in Uterus during pregnancy?

- A-hypertrophy only**
- B-Hypertrophy and Hyperplasia**
- C-hyperplasia only**
- D- apoptosis**

Answer: b

