

TERMINOLOGY ARCHIVE



Final 2022

Done by:

Takwa Amjad



1-contains (8-12)pyramids with circular bases and calyces:

- A-renal cortex
- B-renal medulla
- C-renal pelvis
- D-all the following

Answer:B

2-U shaped tubules that have a thin descending and a thick ascending limbs :

- A-bowman capsule
- B-proximal convoluted tubules
- C-loop of henle
- D-distal convoluted tubule

Answer:c

3-oliguria means:

- A-large amounts of urine
- B-painful urination
- C-blood in the urine
- D-few production in relation to fluid intake

Answer:D

4-Nocturia:

- A-excessive urination at night
- B-inflammation of bladder
- C-painful urination
- D.night time urination incontinence

Answer:A

5-Dys uria:

- A.painful urination
- B.blood in urine
- C.glucose in urine
- D.pus in urine

Answer:a

«ستزول شدة دهرنا كن واثقا الله ارحم بالعييد والطف»



6-urinary hesitancy:

- A.delay between trying to urinate and flow actually**
- B.loss of control over bladder**
- C.ineffective painful straining empty the bladder**
- D. Caused by cysteitis**

Answer:a

7-urinary tenesmus:

- A.delay between trying to urinate and flow actually**
- B.loss of control over bladder**
- C.ineffective painful straining empty the bladder**
- D. Caused by cysteitis**

Answer :c

8-removes toxic wastes directly from blood:

- A-hemodialysis**
- B-peritoneal dialysis**
- C-renal failure**
- D-renal cortex**
- E-renal medulla**

Answer:a

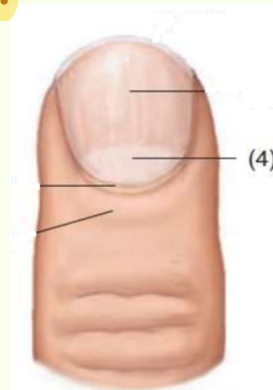
9-The dead flat cells called:

- A-stratum corneum**
- B-stratum basale**
- C-skin**
- D-nails**

Answer:A

10-The reigon(4) in the next figure of a nail called:

- A-lunula**
- B-nail body**
- C-nail root**
- D-cuticle**
- E-nail body**



Answer:A

«ستزول شدة دهرنا كن واثقا الله ارحم بالعييد والطف»



11-Dry or scaly skin:

- A-kerato
- B-melan
- C-myco
- D-ichthy

Answer:d

12-which term means sweat:

- A-sudoro
- B-kerato
- C-myco
- D-ichthy

Answer:a

13-which term means lips:

- A-dento
- B-odonto
- C-cheilo
- D-sialo

Answer:c

14-which means teeth:

- A-sialo
- B-dento
- C-labi
- D-bucco

Answer:b

15-chole docho:

- A-bile duct
- B-gall bladder
- C-bile vessels

Answer:a

16-anorexia:

- A.loss of appetite
- B.loss of weight
- C.physical wasting
- D.gallstones formation

Answer:a

«ستزول شدة دهرنا كن واثقا الله ارحم بالعييد والطف»



17-physical wasting of weight and muscle mass:

- A.cachexia
- B.anorexia
- C.borborgmus
- D.colic

Answer:a

18-dyspepsia:

- A.act of swallowing
- B.discomfort felt after eating
- C.difficulty Swallowing
- D.gas production from the stomach

Answer:b

19-dark colored tarry stole

- A.melena
- B.steatorrhea
- C.nalitosis
- D.fecalith

Answer:a

20-treat constipation by increasing peristaltic activity:

- A-anti spasmodic
- B-laxative
- C-antiemetic
- D-antiacids

Answer:b

21-antiemetic means:

- A-control nausea and vomiting
- B-treat constipation
- C-control loose stool
- D.treat spasms

Answer:a

«ستزول شدة دهرنا كن واثقا الله ارحم بالعبيد والطف»



22-electrical signals recording of muscle at rest and during concentration:

- A-electromyograph
- B-electroencephalogram
- C-electro cardiograph
- D.electromyography

Answer:a

23-condition caused by insufficient amount of oxygen intake:

- A-Dysphonia
- B-Anthracosis
- C-asphyxia
- D-pleurisy

Answer:c

24-a microbial test to identify disease causing organisms of lower respiratory tract:

- A-sweat test
- B-spirometer
- C-sputum c&s
- D.sputum cytology

Answer:c

25-Thumb finger is (.)to the ring finger :

- A-Distal
- B-Ventral
- C-Serperior
- D-lateral

Answer:d

26-hernia containing fat is:

- A-seborrhea
- B-steati rrhea
- C-lipocele
- D.rectocde

Answer:c

«ستزول شِدَّةُ دهرنا كَنِّ واثقًا اللهُ أرحمُ بالعيِّدِ وألطفُ»



27-Abnormal breathing pattern with long periods of apnea followed by deep and rapid breathing

- A. cheyne stokes syndrome
- B. CF
- C. COPD
- D. asthma

Answer:a

28-The medical term pertaining to hair:

- A. cutane/o
- B. Pil/o
- C. squam/o
- D. _vugu_

Answer:b

29-it is from respiratory destris syndrome:

- A. hyaline membrane disease
- B. CF
- C. arelecrasis
- D. emphysema

Answer:a

30-the movement of muscle extension:

- A- Decrease the angle between bones
- B- Increase the angle between bones
- C- The angle between bones don't change
- D. the angle depends on the bones affected

Answer:b

31-What is the fungal infection of muscle called?

- A. Mycosis
- B. scoliosis
- C. tenodesis
- D. SLE

Answer: a

32-Fracture with loss of hight in vertebral body

- A. colles' fracture
- B. greenstick fracture
- C. impacted fracture
- D. compression fracture

Answer:d

«ستزول شدة دهرنا كن واثقا الله ارحم بالعييد والطف»



33-the medical term for skin transplantation from a foreign donor

- A.xenograft
- B.xenograft
- C.homograft
- D.cutaneograft

Answer:a

34-a term that means fungal infection of the skin

- A.dermatomycosis
- B.myomycosis
- C.cutaneomycosis
- D.dcrmatosis

Answer:a

35- a surgical connection between the urinary bladder and the skin

- A.cystotomy
- B.cystectomy
- C.circumvisim
- D.lithotripsy

Answer:a

36-durg used to treat patients with constipation by increasing peristaltic activity in the large intestine or increasing water and electrolytes secretion into the bowel

- A.laxatives
- B.antiemetics
- C.antispasmodics
- D.antiacids

Answer:a

37-this medical term "cholelith" means

- A.gallstones
- B.gallbladder
- C.rectal opening
- D.bile duct

Answer:a

«ستزول شدة دهرنا كن واثقا الله ارحم بالعييد والطف»



38-withdrawing fluid or phlegm from patient airway, inhaling food or liquid into trachea:

- A.respiration
- B.aspiration
- C.perspiration
- D.regurgitation

Answer:b

39-abnormal crackling sound during inspiration

- A.rales
- B.rhonchi
- C.stridor
- D.percussion

Answer:a

40-bacterial infection characterized by formation of thick membranous film across throat

- A. diphtheria
- B.pertussis
- C.croup
- D.tetans

Answer:a

41-the group of nerves that controls tongue muscles

- A.hypoglossal/facial/glossopharyngeal
- B.olfactory/optic /oculomotor
- C.vagus /accessory/facial
- D.facial/ hypoglossal /trochtcar

Answer:a

42-bone immobilization by the application of an orthopedic device to injured bone part

- A.cast
- B.orthotic
- C.orthopedic
- D.callus

Answer:a

«ستزول شِدَّةُ دهرنا كَنِّ واثقًا اللهُ أرحمُ بالعيِّدِ وألطفُ»



43-enuresis:

- A.night time excessive**
- B.night time painful urination**
- C.night time urinary incontinece**
- D.night time blood in urine**

Answer:c

44-urinary incontinence:

- A.delay between trying to urination & the flow**
- B.cavsey by cystitis**
- C. Ineffective painful straining to empty the bladder**
- D.loss of control over bladder**

Answer:d

45-Nerves that controlled the tongue:

- A.XII, IX, VII**
- B.XII,IX,VIII**
- C.VIII,IX,X**
- D.VIII,IIX,XI**

Answer:a

46-which one is involuntary and striated macule?

- A.smoothmuscle**
- B.cardiac macule**
- C.skeletal Muscle**
- D.viscera**

Answer:b

47-electroencephalography means:

- A.recording the electrical activity of brain**
- B.records of the electrical activity of the brain**
- C.a+b**
- D.non of the above**

Answer:a

«ستزول شدة دهرنا كن واثقا الله ارحم بالعييد والطف»



48-tuberculin skin tests means:

- A.introducing purified protein derivative (PPD) under the skin; determines if person has been exposed to Tuberculosis
- B.TB test
- C.test for diagnosing bacterial lung infection
- D.all Of the above

Answer:d

49-anesthetic means:

- A.produces loss of sensation or consciousness
- B.treatment Of mild to moderate pain
- C.promote sleep
- D.colming or relaxing effect

Answer:a

50-aspiration means:

- A.withdrawing fluid using suction
- B.removing phlegm from patient's airway
- C.inhaling food or liquid into trachea
- D.all of the above

Answer:d

51-cyanosis means:

- A.blue skin caused by low oxygen in blood
- B.Nose bleed
- C. coughing of blood
- D. Too deep breath

Answer :a

52-pneumoconiosis means:

- A.walking Pneumonia
- B. Alveoli collapse
- C.thick mucous production
- D.accumulation of foreign particles, such as coal dust, in the lungs

Answer:d

53-(SIDS) means:

- A.unexpected and unexplained death of apparently well infant; stops B.breathing for unknown reason
- C.accumulation of pus
- D.blood test of O2 & CO2

Answer:b

«ستزول شدة دهرنا كن واثقا الله ارحم بالعييد والطف»



54-compression fracture means:

- A.fracture with loss of height in vertebral body; often from osteoporosis
- B.fracture where bone is shattered , splintered or crushed
- C.fracture with open skin wound
- D. Fracture with no open skin wound

Answer:a

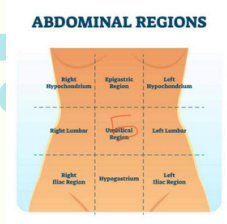
55- intermittent claudication

- A.attacks of severe pain and lameness caused by muscle ischemia; usually in calf muscles
- B.sudden ;involuntary strong muscle contraction
- C.sever neck spasms
- D.inflammation of elbow muscle

Answer : a

56-The region 5 is called:

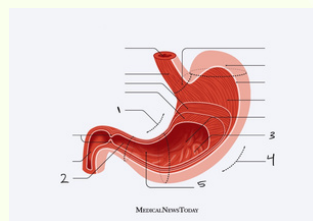
- A. Left iliac region
- B. Right iliac region
- C. Umbilical region
- D. Epigastric regions



Answer :c

57-Which region is greater curvature?Which region is greater curvature?

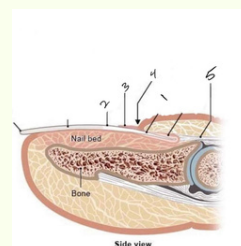
- a.1
- b.2
- c.3
- d.4
- e.5



Answer :d

58-Which one is cuticle ?Which one is cuticle ?

- a.1
- b.2
- c.3
- d.4
- e.5



«ستزول شدة دهرنا كن واثقا الله ارحم بالعييد والطف»

answer:c



اللَّهُمَّ أَنْتَ رَبِّي، لَا يَخْفَى عَلَيْكَ مَا فِي قَلْبِي،
فَاللَّهُمَّ طَمَآنِينَةٌ مِنْكَ، وَغَنَى بِكَ، يَا رَبِّ أَعُوذُ
بِكَ مِنْ ضَيْقَةِ الْقَلْبِ، وَشَعُورٍ لَا يُشْكِي وَلَا
يَفْهَمُ، اللَّهُمَّ أَرِحْ قَلْبِي بِمَا أَنْتَ بِهِ أَعْلَمُ، وَلَا
تَجْعَلْنِي أَشْكِي لِمَنْ لَا يَخْشَى عَلَيَّ مِنْ
حَزْنِي، اللَّهُمَّ إِنِّي أَفُوضُ دُنْيَايَ كُلَّهَا إِلَيْكَ. ♥

الطبُّ الجراحة
لجنة

