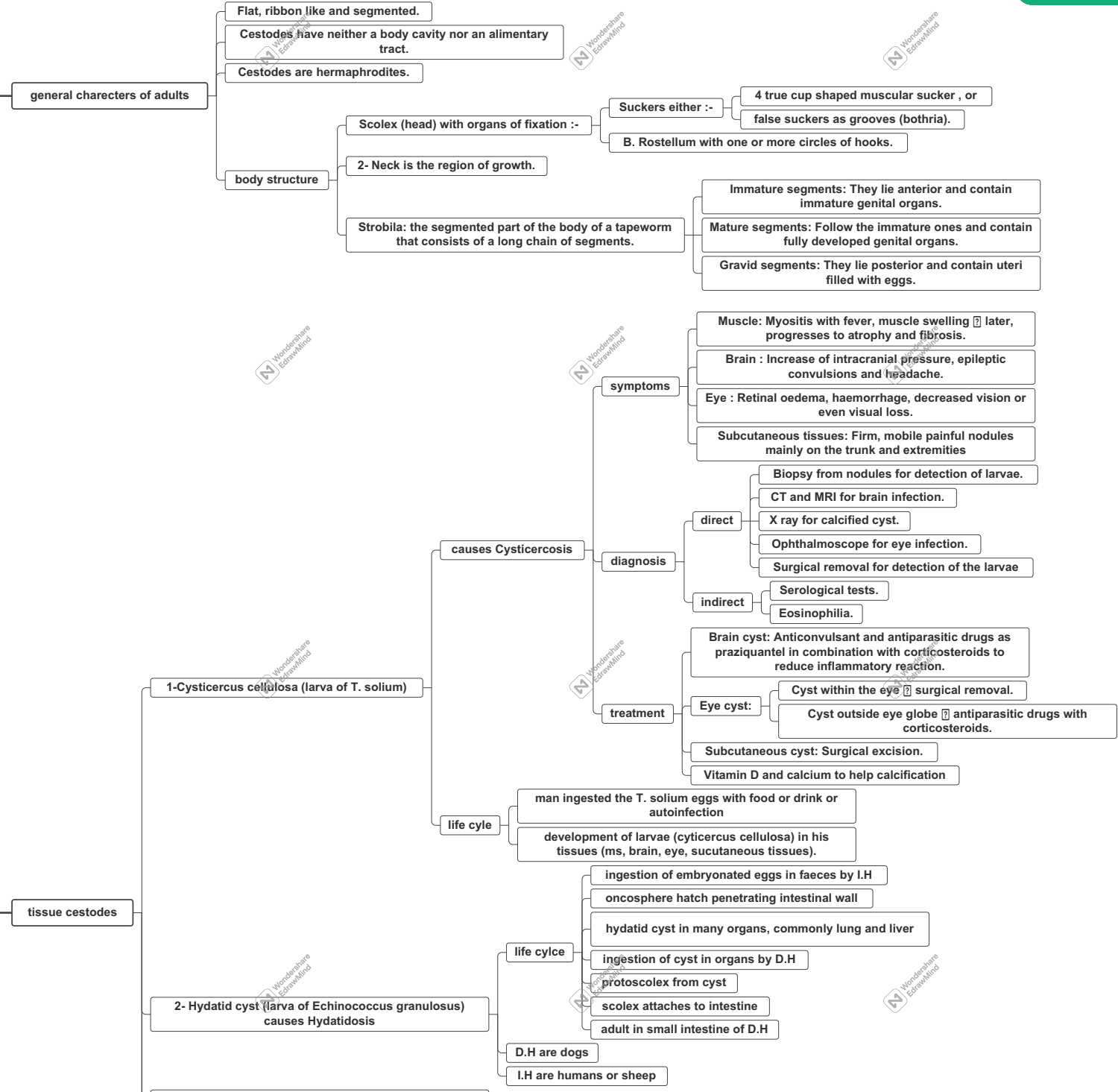


Cestoidea



Intestinal cestodes

1- Diphyllbothrium latum (fish tapeworm)

Geographical Distribution: Cosmopolitan, especially in cattle-raising countries.

D.H : Man

I.H : Herbivorous animals (cattle, sheep and camels).

morphology of adults

- Scolex : Globular, with 4 cup shaped suckers at the angles of the head. No rostellum or hooks.
- Strobila: 1000 - 2000 segments.
- Immature segments.
- Mature segments.
- Gravid segments.

life cycle

- D.H eats meat containing viable cysticercus bovis.
- scolex attaches in small intestine
- eggs or gravid segments in faeces
- I.H gets infected by ingesting contaminated plants
- oncosphere hatch penetrate intestinal wall and migrate to musculature
- develops into cysticerci in muscles

Disease : Taeniasis saginata

- symptoms
 - 1) Intestinal disturbance e.g. nausea, vomiting, hunger pains, colic, diarrhea or constipation.
 - 2) Toxic manifestations: Due to worm products e.g. dizziness, headache, insomnia & delirium.
 - 3) Intestinal obstruction.
 - 4) Loss of weight.
 - 5-Anxiety and nervousness due to continued migration of G. segments out of the anus ? irritation & itching.
- diagnosis
 - 1- Detection of eggs by stool examination (direct and concentration methods).
 - 2- Detection of gravid segments in the stool to differentiate between Taenia species.
- treatment
 - 1) Niclosamide (Yomesan).
 - 2) Praziquantel (Biltricide).
 - 3) Atebrine.

2- Taenia saginata (Beef or bald tapeworm).

Geographical distribution :- -Pork-eating countries e.g. America, Europe.

D.H: Man.

I.H: Pigs and occasionally man.

life cycle

- D.H eats pork containing viable cysticercus cellulosa .
- scolex attaches in small intestine
- eggs or gravid segments in faeces
- I.H gets infected by ingesting contaminated plants
- oncosphere hatch penetrate intestinal wall and migrate to musculature
- develops into cysticerci in muscles

causes Taeniasis solium

- same clinical pictures as taeniasis saginata
- diagnosis
 - Stool examination for detection of eggs or gravid segments
- treatment
 - Anti-cestodal drugs for adult as taeniasis saginata but:

- 1) Niclosamide is contraindicated because it disintegrates the worms, releasing large number of eggs in the intestine which increase the possibility of cysticercosis (internal autoinfection).
- 2) Atebrine causes nausea and vomiting. Anti-emetic must be given one hour before administration of Atebrine