



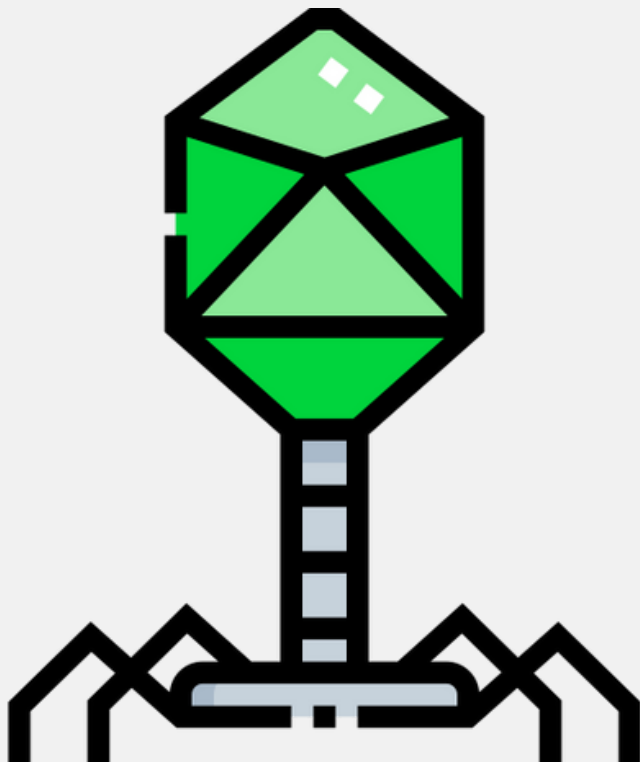
MICROBIOLOGY ARCHIVE

Mid - ٢٩

DONE BY:

BAYAN MAHMOUD

RAGHAD AL-KBAWE



1. The name of the virus when its genetic material conjugates with bacterial ones:

- a) ProPhage
- b) Lytic phage

Answer: a

2. A 6 years old with meningitis, gram negative coccobacillus what kind of infection he got?

Answer: Hemophilus

3. When a bacteria grown in a test tube, it spread all over the tube with aggregation at the top of it, which kind of bacteria?

Answer: Facultative anaerobic

4. Anchor peptidoglycan layers to the plasma membrane

- A. Teichoic acid
- B. Lipoteichoic acid

Answer: b

5. The true regarding peptide interbridge

- A. D Alanine - 5 Glycine - L lysine
- B. L Ala - 5 Gly - L lys
- C. D Ala - 4 Gly - L lys
- D. L lys - 5 Gly - D Ala

Answer: a

6. All the following are true except:

- A) Episome always found in cytoplasm
- B) Capsule may have antiphagocytic activity
- C) Mesosomes increase surface area
- D) Inclusion body save material
- E) Cytoplasmic membrane the same in gram positive and gram negative

Answer: a

7. Penicillin bind to :

Answer: Penicillin binding protein

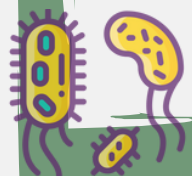
8. Scarlet fever cause due to :

Answer: Streptococcus Pyogenes

9. Which of the following written incorrectly:

Answer: Monocytes

﴿وَوَجَدَكَ ضَالًّا فَهَدَى﴾



10. All the following are true except:

- A. Russian botanist -- virology
- B. Redis -- disapproved spontaneous generation
- C. Robert Koch -- animalcules

Answer: c

11. Antibiotic that inhibit translocation: Antibiotic that inhibit translocation:

- A. Erythromycin
- B. Ampicillin

Answer: a

12. The final electron acceptor in aerobic respiration: The final electron acceptor in aerobic respiration:

- A. Nitrate
- B. Sulfate
- C. Oxygen

Answer: c

13. The vibrio cholerae is: The vibrio cholerae is:

- A. Alkaliphile
- B. Neutrophile
- C. Acidophile
- D. Halophile

Answer: a

14. Which of the following is spore-forming bacilli:

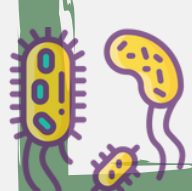
- A. S. aureus
- B. L. monocytogenes
- C. C. difficile
- D. C. diphtheriae

Answer: c

15. Which of the following is scientifically corrected:

- A. Helicobacter Pylori
- B. Clostridium botulinum
- C. Yersinia enterocolitica

Answer: c



16. The antimicrobial that inhibit binding of amonoacyl-t-RNA to the acceptor site on the 70 S ribosome:

- A.Tetracycline
- B.Lincosamides
- C.Macrolide
- D.Amphenicol

Answer: a

17.Bacteria in a dark area and use carbon dioxide as a carbon source:Bacteria in a dark area and use carbon dioxide as a carbon source:

- A.Chemoautotrophic
- B.Photoautotrophic
- C.Chemoheterotrophic

Answer: a

18. One of the following external to cytoplasmic membrane:

- A.Mesosomes
- B.Capsule
- C.DNA

Answer: b

19.Bacteria grow in human bodyBacteria grow in human body

- A.Mesophils & neutrophils
- B.Mesophils & acidophilus
- C.Mesophiles & halophiles
- D.Acidophiles & halophiles
- E.Acidophiles & neutrophiles

Answer:a

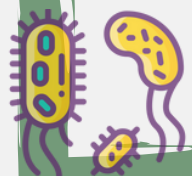
20.Inhibit binding of aminoacyl-t-RNA to the A site in 70s?Inhibit binding of aminoacyl-t-RNA to the A site in 70s?

Answer : Minocycline

21. Have pseudomembrane?

Answer: C. diphtheria

﴿وَوَجَدَكَ ضَالًّا فَهَدَى﴾



22. All the following is true regarding medical waste except

- A. Black : for food
- B. Red: tissue from infection
- C. Yellow: needle
- D. Yellow: waste from microbiology lab
- E. Blue: chemotherapy products

Answer: d

23. Have central spores?

Answer: Anthracis

24. Gram negative bacteria cause pneumonia?

Answer: Legionella

25. Bacteria found in polymorphonuclear cell?

Answer: N. meningitidis

26. Example of spirochetes?

Answer: Treponema

27. Can penetrate intestines then go to blood stream?

Answer: S. typhi

28. Which important thing you should have when deal with patient has influenza?

- A. gown
- B. surgical mask
- C. gloves

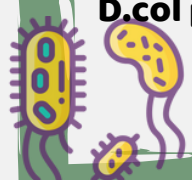
Answer: b

29. Type of plasmid give bacteria nutrients?

- A. F+ plasmid
- B. F-plasmid
- C. resistance plasmids
- D. col plasmid*

Answer: d

﴿وَوَجَدَكَ ضَالًّا فَهَدَى﴾



30. Which give copy plasmid ?

Answer: Conjugation

31. In the case of E. coli, what is the most effective antibiotic to treat it?

Answer: Ceftriaxone

32. Comma shaped bacteria is considered?

A. aerobe

B. anaerobe

C. alkaliphiles

Answer: c

33. All of the following correct about pili except:

A. a single bacterial cell bears about 100-200

B. two type

C. amphotrophic pili good for attachment

D. the origin is from cytoplasm and penetrate through the peptidoglycan layers

E. Pili made from protein called pilin

Answer: c

34. In airborne precautions, which one is true :

Answer: Pressure inside is less than outside

35. Which one of personal protective equipments use when deal with patients have tuberculosis?

Answer: N95 mask

36. Bacteria inhabitants of stagnant water :

Answer: Legionella pneumonia

37. Bacteria makes scarlet fever :

Answer: Streptococcus pyogenes

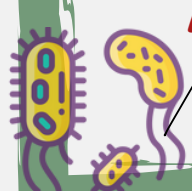
38. Which phage causes hemorrhagic diarrhea?

Answer: Lambda phage

39. How many moments you should wash your hands?

Answer : 5 moments

﴿وَوَجَدَكَ ضَالًّا فَهَدَى﴾



40. Which bacteria is non-spor

Answer: Mycobacterium which has waxes that prevent Destruction

41. All of the following is true except :

- a. Robert Hooke : discovered animalcules
- b. Pasteur: vaccine concept
- c. Koch's postulate: one micro one disease
- d. Botanist launching the field of virology

Answer: a

42. Which of the following is false: Which of the following is false:

- a. O antigen can act as endotoxins
- b. Lipid A stabilizes outer membrane structure
- c. Lipid A may cause septic shock

Answer: A

43. Comma bacteria is :

- a. neutrophiles
- b. alkaliphiles
- c. psychrophiles

Answer: b

44. Which type of cocci bacteria is cuboidal? Which type of cocci bacteria is cuboidal?

Answer: Sarcinae

45. Which of the following can cause pseudomembranous? Which of the following can cause pseudomembranous?

Answer : Diphtheria

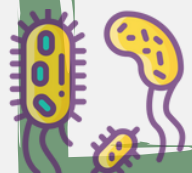
46. Which bacteria end with the suffix -ales? Which bacteria end with the suffix -ales?

Answer: Order

47. One of the following is true regarding free radicals. One of the following is true regarding free radicals

- a. Hydrogen peroxide break down by catalase only
- b. superoxide free radical inhibition by two enzymes
- c. Hydrogen peroxide break down by peroxidase only
- d. Superficial free radical inhibition by one enzyme

Answer: b



48. which generation from cephalosporin treat pseudomonas ?

Answer: 4th generation .

49. At which temperature extreme thermophiles grow ?

Answer: 80 and above

50. which of the following correct match:

A. Louis Pasteur → Discovered Mycobacterium tuberculosis

B. Redi → As a tailor

C. Ignaz Semmelweis → discovered hygiene *

Answer: c

51. The stage of bacteria growth , in which penicillin works most effective:

A. Lag phase

B. Exponential phase

C. Stationary phase

D. Exponential and lag

E. Death phase

Answer: b

52. When viral genome integrated with bacterial genome, this process called :
When viral genome integrated with bacterial genome, this process called :

A. Prophage

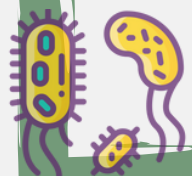
B. Bacteriophage

C. Transduction

Answer: a

"لم يكن مشغولاً عن يعقوب
ولكنه كان يصنع من يوسف ملكاً،
لو علمتم كيف يجبر الله القلوب
ما دخل اليأس إلى قلوبكم!"
ضع أمرك في ودائع الله وقل يارب سلمتك أمري وكل ما أملك فالله وحده
من يقدر على تخفيف حملك و وحده من سيصلح لك أمرك

﴿وَوَجَدَكَ ضَالًّا فَهَدَى﴾



Athar

Microbiology Mid

Done By:

shefaa hashim

Designed By :

Raneem Dmour



1-What is the product of pseudomonas fermentation in carbohydrates rich medium

A-acetone

B-alcohol

C-ethanol

D-mixed acid

E-none of the above

2-Gram positive non spore forming bacteria cause gastroenteritis ?

Listeria monocytogenes

3-Not true about Gram -ve ?

(D-Ala)----(5-Gly)----(L-Ala)

4-all of the following true except :

virus can be cultured on artificial media

5-one of the following does not contain a nucleic acid

prions

6-which bacteria cause severe profuse watery diarrhea(rice water)

vibrio cholera

7-Ehrlich's reagent ?

indole production

8-Which of the following bacteria is oxidase positive

pseudomonas

9-Which of the following bacteria causes of whooping cough

bordetella pertussis

10-Lag phase is called:

A-adjustment phase

B-death phase

C-stationary

D-maximal growth

11-One of the following correct about Tyndallization:

exposure of 100c for 20 minutes on 3 successive days



12-What of these statement is correct (معلومة حكمتها الدكتور بالمحاضرة)

antigen associated with a pathogen is more accurate than antibodies against a specific pathogen ✓

13-A young kid has meningitis\ gram negative cocccbacili\dose not take any vaccine?
H.influenzae ✓

14-What is the phage of Scarlet fever phenotype?
T12 ✓

15-lack of antioxidant enzymes:

- A-Anaerobes ✓
- b-Aerobes
- c-Microaerophile
- d-Macroaerophils

16-One of the following is INCORRECT regarding filtration

- A-used for vitamin sterilizing
- B-antibiotics solution
- C-0.46 pore size for bact
- D-0.02 pore size for sterilization ✓
- E-0.22 pore size for solutions

17-One of the following is INCORRECT

- A 35% → 100% concentration
- B-HCHO
- C-Use for rubber
- D-Broad spectrum
- E-35% is sporicidal ✓

18-All of the following is correct about pilli EXCEPT:

- A- present on the surface of all gram negative bacteria. ✓
- B- each bacterial cell bear 100-500 pilli.
- C- have no roll in motality.
- D- there origin from cytoplasm and penetrate through peptidoglycan layer of cell wall.

19-INCORRECT about Flagella structure:

- A- basal body, hook, filament from inside to outside
- B- basal body embedded in peptidoglycan layer. ✓
- C- hook located outside the cell wall.
- D- hook can rotate around itself.
- E- flagella distribution varies in bacteria



20-One of the following is internal to cell wall

A-Mesosomes ✓

B-Flagella

C-Pili

D-Caabout

21-Which of the following is incorrect about bacteria:

Answer: (Streptococcus pyogenes gram positive catalase negative b-hemolytic group b Streptococcus causes pharyngitis) ✓

22-One of the following is true regarding free radicals

a. Hydrogen peroxide break down by catalase only

b. superoxide free radical inhibition by tow enzymes ✓

c. Hydrogen peroxide break down by peroxide only

d. Superficial free radical inhibition by one enzyme

23-Which type of cocci bacteria is cuboidal:

Answer: Sarcinae ✓

24-Which of the following is false:

a. O antigen can act as endotoxins ✓

b. Lipid A stableite outer membrane structure

c. Lipid A may cause septic shock

25-Which give copy plasmid ?

Answer: Conjugation ✓

26-The true regarding peptide interbridge gram +ve :

A. D Alanine - 5 Glycine - L lysine ✓

B. I Ala - 5 Gly - L lys

C. D Ala - 4 Gly - L lys

D. L lys - 5 Gly - D Ala

27-All the following are true except:

A. Pili always present on the surface of Gram -ve ✓

B) Capsule may have antiphagocytic activity

C) Mesosomes increase surface area

D) Inclusion body save material

E) Cytoplasmic membrane the same in gram positive and gram negative

28-Penicillin bind to:

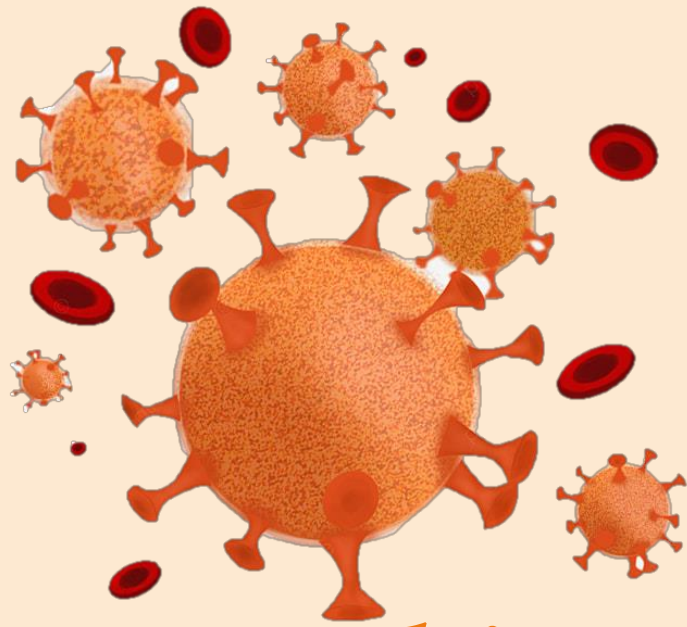
Answer: Penicillin binding protein ✓



29-The antimicrobial that inhibit binding of amonoacyl-t-RNA to the acceptor site on the 70 S ribosome:

- A.Tetracycline ✓
- B.Lincosamides
- C.Macrolide
- D.Amphenicol





Archive

microbiology

Collected by



Archive microbiology –Wareed (midterm exam)

Content :

- 1- Introduction to microbiology lecture**
- Bacterial structure lecture**
- Bacterial physiology lecture**
- Microbial genetics lecture**
- Identification and classification of Bacteria lecture**
- Sterilization and disinfection lecture**
- Gram +ve bacteria lecture**
- Gram –ve bacteria lecture**
- Infection control lecture**
- Antimicrobial lecture**
- Virus structure and classification lecture**

Q1 : Molds are multicellular organisms that referred to: غير مطلوب

- a) viruses
- b) bacteria
- c) fungi
- d) protozoa

Answer:c

Q2 : Microorganisms that use photosynthesis to produce energy غير مطلوب :

- a) Achaea
- b) algae
- c) fungi
- d) viruses

Answer:b

Q3 : Clusters of flagella at both end of the cell called:

- a) Lophotrichous
- b) Monotrichous
- c) Amphitrichous
- d) Peritrichous

Answer:c

Q4 : One of the following bacteria considered as a grape structure :

- a) staphylococci
- b) streptococci
- c) spirochete
- d) vibrio
- e) Coccobacillus

Answer:a

Q5 : One of the following bacteria have a lipopolysaccharides in its cell wall:

- a) gram-positive bacteria
- b) gram-negative bacteria
- c) streptococci

Answer:b

Q6 : The phase at which bacteria grow at a rapid rate:

- a) lag phase
- b) logarithmic phase
- c) stationary phase
- d) Death phase

Answer:b

Q7 : The temperature that describes the maximal possible rate at which organisms grow:

- a) optimum temperature
- b) Cardinal temperature
- c) maximum temperature
- d) minimum temperature

Answer:a

Q8 : The convenient temperature range for the mesophiles:

- a) 40-60
- b) 25-40
- c)60-80

Answer:b

Q9 : Organisms that do not and may even be killed by oxygen:

- a) aerobes
- b) facultative
- c) anaerobes
- d) Aerotolerant anaerobes

Answer:c

Q10 : The breakdown of cellular constituents (cell wall, proteins ,fatty acids, nucleic acids) called:

- a) Anabolism
- b) catabolism

Answer:b

Q11: enzyme that copies the viral negative-sense RNA genome into a positive-stranded copy: غير مطلوب

- a) RNA polymerase
- b) Reverse transcriptase
- c) RNA polymerase I
- d) RNA polymerase II

Answer:a

Q12: The perfect percentage to be present in disinfectant and antiseptic of alcohol is:

- a) 100%
- b) 50%
- c) 70%
- d) 60%

Answer:c

Q13 : Q(13): One of the following is bacteriostatic : غير مطلوب

- a) Aminoglycosides
- b) Rifampicin
- c) Quinolones
- d) Erthromycin
- e) Voncamycin

Answer:d

Q14: One of the following use for inhibition of folate synthesis :

- a) Carbapenems
- b) Co-trimoxazol
- c) Rifampicin

Answer:b

Q15: For DNA hyperidization we use: غير مطلوب

- a) Southern blot analysis

- b) Western blot analysis
- c) Eastern blot analysis
- d) Restriction endonuclease analysis

Answer:a

Q16: One of the following is true about viroids : غير مطلوب

- a) Contain host cell DNA instead of viral DNA within the capsid.
- b) Molecules of RNA with no capsid protein or envelope
- c) Infectious protein molecules that do not contain DNA or RNA

Answer:b

Q17: Amies medium is an example of: غير مطلوب

- a)Transport media
- b)Enriched media
- c)Selective media

Answer:a

Q18: Items such as media, liquids, and instruments are usually autoclaved for 15 minutes at temperature: غير مطلوب

- a)100 C
- b)160 C
- c)121 C
- d)870 C

Answer:c

Q19: Blood agar is an example of: غير مطلوب

- a)enriched media
- b)enrichment
- c)transport
- d)special

Answer:a

Q20: Zoonotic transmission of pathogens means: غير مطلوب

- a) transmit pathogen from human to animal
- b) transmit pathogen from human to other human
- c) transmit pathogen from animal to human

Answer:c

Q21: A method which kills food pathogens without damaging the nutritional value or flavor: غير مطلوب

- a) Pasteurization
- b) Sterilization
- c) Incineration

Answer:a

Q22: For normal examination of microbes we use :

- a)High magnification 1000 diameter
- b)EM
- c)High magnification 400 diameter

Answer:a

Q23: The most common chemical sterilant is: غير مطلوب

- a)iodine
- b)Ethyl alcohol
- c)Chlorine
- d)Ethylene oxide

Answer:d

Q24: The first who use antiseptic techniques is: غير مطلوب

- a) Robert Hooke

- b) Leeuwenhoek's
- c) Joseph Lister
- d) Jenner

Answer:c

Q25: What is the level of classification that strain refer to:

- a)Subspecies
- b)Species
- c)Genus
- d)Family

Answer:a

Q26: All of the following are Key Points for infection control and Personal Hygiene EXCEPT:

- a) Restrain hair – hair falling forward may drop organisms.
- b) Keep nails long - it's easier to pick stuff
- c)Minimum jewelry (see agency policy)
- d)Cover open wounds with an occlusive dressing
- e)Bare above elbow, no ties or coats

Answer:b

Q27: One of the following statements related to biovar : غير مطلوب

- a)Special biochemical or physiological properties
- b)Distinctive antigenic properties
- c) Pathogenic properties for certain hosts
- d) Ability to be lysed by certain bacteriophages
- e)Special morphologic features

Answer:a

Q28: A boy with difficulty in breathing... Bacteria gram negative cocobacillus so the therapy will be for :

- a) Haemophilus influenza
- b) Bordetella pertussis

Answer:b

Q29: Most strains resists phagocytosis by:

- a) Capsule
- b) Cell membrane
- c) Cytoplasm

Answer:a

Q30: Virus contains lipid in it's virion: غير مطلوب

- a) Parvoviruses
- b) Picornaviruses
- c) hepadnaviruses
- d) Herpes virus

Answer:d

Q31: All of the following about C.difficile , EXCEPT?

- a) heavily attached to the colon
- b) antibiotic associated colitis
- c) Enterotoxin that damage intestine
- d) major cause of diarrrhea in hospital
- e) It's an opportunistic infection

Answer:a

Q32: Someone came to the clinical with wound infection, black skin and gas bubbles, what is the true statement?

- a) the causative agent is spore-forming, gram positive bacilli
- b) the causative agent is spore-forming, gram negative bacilli
- c) the causative agent is nonspore-forming, gram positive bacilli
- d) the causative agent is nonspore-forming , gram negative bacilli
- e) the causative agent is spore-forming, aerobic and gram positive bacilli

Answer:a

Q33: The following bacteria are interfering with normal muscle contraction?

- a)clostridium botulinum and clostridium tetani
- b)C.botulinum only
- c)C.tetani only
- d)C.difficile only
- e)C.botulinum and C.difficile

Answer:a

Q34: Someone came to the clinical with clinical manifestation, he said to the doctor that he ate a canned food, what is the bacteria that associated with this?

- a) C.perfeingens
- b) C.difficile
- c) B.anthraxis
- d) C.botulinum
- e) Mycobacterium

Answer:d

Q35: One of the following is INCORRECT?

- a)coagulase negative involved in nosochoomial and opportunistic infection
- b)S.epidermids can easly optain from skin and mucous membrane
- c)S.saprophticus lives on skin,intestine and vagina
- d)coagulase is a specific to identified staphylococcus

e)S.aureus can cause necrotizing infection

Answer:c

Q36: Infant meningitis.. Bacteria was gram negative diplococoid :

- a)Neisseria meningitidis
- b) Neisseria gonorrhoeae
- c) Haemophilus influenza

Answer:a

Q37: Uncultured gram positive bacteria, which of the following analysis use to identify it : غير مطلوب

- a)Serologic
- b)special biochemical
- c)PCR
- d)rRNA analysis
- e)gel electrophoresis

Answer:a

Q38: What's incorrect about rhinovirus and poliovirus? غير مطلوب

- a)contain RNA polymerase
- b) have multiple antigenic types
- c) is not integrated

Answer:a

Q39: Ethylene oxide used in gaseous form for sterilizing heat sensitive Objects as :

- a) catheters
- b) gloves before use
- c) Glasswares
- d) forceps
- e)Endoscopes

Answer:e

Q40: one of these equipments is not needed in case of tuberculosis:

- a) surgical mask
- b) Gown
- c) Gloves
- d) Goggles
- e) Respirator mask

Answer:a

Q41: The average size of cells during the exponential phase of growth is:

- a) lesser than the lag phase
- b) greater than the lag phase
- c) none of these
- d) equal to the lag phase

Answer:a

Q42: One of the following viruses can enter the cell purely: غير مطلوب

- a) Parvoviruses
- b) Picornaviruses
- c) hepadnaviruses
- d) Herpes virus

Answer:b

Q43 Which of the following groups are given in precaution?

- A. History of hypersensitivity
- B. Impaired liver and kidney functions
- C. Pregnancy and breastfeeding
- D. children

E. All of the above

Answer:e

Q44: All of the following mechanisms will cause antimicrobial resistance except?

- A. Inactivation of the antibacterial agent
- B. Target hyperproduction
- C. Target bypass
- D. Sequence mutation
- E. Multiple mutations of the genes found in the mitochondria

Answer:e

Q45) Incorrect about chlamydia:

Answer: present free in cytoplasm

Q46) Something related to Tugument:

Answer: between plasmid and envelope

Q47) True about capsid :

Answer: protect genome and determine shape

Q48) Miss match:

answer: S.typhi === infecting proximal small bowel

Q49) Eccentric spores :

answer: Clostridium tetani

Nabed (midterm exam)

1) Which of the followings is INCORRECT? Select one:

- a. Coagulase negative staphylococci frequently involved in opportunistic infections.
- b. S. epidermidis can be easily isolated from skin
- c. Coagulase positive S. saprophyticus frequently lives on skin, intestine, and vagina
- d. S. aureus can cause serious infections
- e. Catalase test is used to distinguish between Staphylococci and Streptococci

Answer:c

2) Ribosomes are the factory of ___ synthesis? Select one:

- a. Protein
- b. Plasmid
- c. Sugar
- d. Lipid
- e. DNA

Answer:a

3) An RNA virus that has a nuclear phase in its replication process is? غير مطلوب
Select one:

- a. Coronavirus
- b. Rhabdovirus.
- c. Retrovirus
- d. Togavirus
- e. Caliciviruses

Answer:c

5) bacterial flagella surrounding all the body is called?

- a. Peritrichous

- b. Amphitrichous
- c. Lophotrichous
- d. Monotrichous
- e. Ditrichous

Answer:a

6) Which of the followings is mismatched? Select one:

- a. E.coli: Diarrhea affects the proximal small bowel
- b. S.enteritidis Dysentery affects the colon
- c. V.cholera non - nflammatory Diarrhea
- d. S typhi Invasive infection affects the proximal small bowel
- e. Shigella Invasive Inflammatory infection affects the colon

Answer:d

7) Genotypic methods of microbe identification include all the following غير مطلوب EXCEPT? Select one:

- a. Nucleic acid sequence analysis.
- b. rRNA analysis.
- c. Direct whole pathogen agglutination assays.
- d. Restriction fragment length polymorphism.
- e. Plasmid fingerprinting.

Answer:c

8) Infection control measures include all of the followings EXCEPT? Select one:

- a. Bare above elbow.
- b. Share thermometers between patients
- C. No coats.
- d. Cover open wounds with occlusive adhesive

e. Hand washing

Answer:b

9))Which of the followings has a spiral shape? Select one:

a.Neisseria

b.Treponema

c.Chlamydia

d.E.coli

e.Yersinia

Answer:b

11)Which of the following pathogens might be associated with this case ? Select one :

a.Clostridium perfringens

b. Bordetella pertussis

C.Bacilius cereus

d.Clostridium tetani

e.Clostridium botulinum

Answer:d

12) Phagovar is an intra-subspecific designation depends on? Select one: غير مطلوب

a.Special biochemical or physiological properties

b.Distinctive antigenic properties

C.Pathogenic properties for certain hosts

d.Ability to be lysed by certain bacterial viruses.

e.Special morphologic features.

Answer:d

13) patient suffering from a difficulty in breathing, a Gram staining from the infected area showed Gram-negative cocco-bacilli, for which of the followings an empirical therapy should be given? Select one:

- a. Proteus
- b. Bordetella pertussis
- c. Neisseria meningitides
- d. Clostridium tetani.
- e. E. coli

Answer:b

14) A patient with tuberculosis, isolated in a single room, the following personal protective equipments are needed for complete protection except? Select one:

- a. Gown
- b. Surgical mask
- c. hand hygiene.
- d. Gloves
- e. Goggles

Answer:b

15) Viropexis is? Select one : غير مطلوب

- a. the separation of the capsid from the viral genome
- b. a receptor-mediated endocytosis.
- c. a process by which enveloped viruses obtain their envelope
- d. the interaction of viral attachment proteins and specific host-cell receptor sites
- e. regulated by host-cell DNA-dependent RNA polymerases .

Answer:b

17) After using a syringe to take a blood sample, one of the following is TRUE?

Select one:

- a. Recap the needle immediately
- b. Leave the syringe on the patient's bed, wait an hour then recap the needle.
- c. Swap the needle with alcohol then recap the needle.
- d. Never recap the needle and discard the syringe in the yellow sharps container
- e. Throw the syringe in the black plastic bag .

Answer:d

18) Which of the following can be isolated from food and can cause flaccid paralysis? Select one:

- a. Clostridium botulinum
- b. Bordetella pertussis.
- c. Bacillus anthracis
- d. Neisseria meningitidis
- e. Haemophilus influenza

Answer:a

19) The order of wearing the personal protective equipment (PPE) is? Select one:

- a. Gown, mask, gloves
- b. Mask, gloves, gown
- c. Gloves, gown, mask
- d. Mask, gown, gloves
- e. Gown, gloves, masks.

Answer:a

20) Which of the following is INCORRECT? Select one:

- a. S. aureus is catalase and coagulase positive.
- b. Group B streptococcus is beta hemolytic

- c. The non-spore forming *Bacillus cereus* causes food poisoning
- d. *Clostridium tetani* produces spores
- e. *Clostridium botulinum* interferes with release of acetylcholine

Answer:c

21) Most of pathogenic bacteria can live in the following temperature rate? Select one:

- a. Mesophile
- b. Psychrophile.
- c. Thermophile.
- d. Capnophils.
- e. Hyperthermophile.

Answer:a

22) Extreme halophiles are characterized by? Select one:

- a. Requiring high levels of carbon for growth
- b. Requiring high levels of Nitrogen for growth
- c. Requiring high level of Copper for growth
- d. Requiring high levels of Zinc for growth
- e. Requiring high levels of Salts for growth

Answer:e

23) Aerobic bacteria are? Select one :

- a. Only grow anaerobically
- b. Only grow in the presence of CO_2
- c. Ordinarily anaerobic but can grow with CO_2 .
- d. Ordinarily aerobic but can grow in absence of O_2 .
- e. Only grow aerobically .

Answer:e

24))Which of the following structures can pass from one bacterium another?

Select one:

- a.Plasmid
- b.Pilus
- C.Capsule
- d.Plasma Membrane
- e.Cell wall

Answer:a

25) One of the following antibiotic families is bactericidal and preferred غير مطلوب in cases of meningitis? Select one:

- a.Tetracyclines
- b.Chloramphenicol
- c.Cephalosporins.
- d.Macrolides
- e.Ciprofloxacin.

Answer:c

26) Chain of infection, which of the followings is WRONG? Select one:

- a.Bacteria is an example on the infectious agent.
- b.Portal of entry and exit and can be the blood.
- C.Method of transmission such respiratory droplets
- d.Susceptible host includes oruy the immunocompromised weak immunity) people.
- e. Soil can be the reservoir.

Answer:b

27) Which of the followings is Gram negative diplococo? Select one:

- a.N. gonorrhoeae
- b.Staphylococci aureus
- c.H pylori
- d. S.pneumoniae
- e.Proteus

Answer:a

28) A3 years child was seen by the pediatrician On examination, suspected of having meningitis The CSF Gram staining showed a Gram negative coccobacilli Which of the following you expect the causative agent? Select one :

- a.N meningitides
- b. H. influenzae
- c.E. Coli
- d.N. gonorrhoeae
- e.Proteus

Answer:b

29) Sterilizing an endoscope in gastrointestinal units is best achieved by? غير مطلوب
Setect one :

- a.Iodine.
- b.Tyndallisation.
- c.Inspissations.
- d.Ethylene oxide.
- e.Filtration .

Answer:d

30))Which of the following structures is never present in a Prokaryotic cell? Select one :

- a.Cell wall.
- b.Plasmid.
- C.Ribosome.
- d.Membrane-bound nucleus.
- e.Cell membrane.

Answer:d

31) Items such as media, liquids, and instruments are usually autoclaved غير مطلوب at? Select one:

- a.121°C For 15 minutes
- b.63°C for 30 minutes
- . c.72°C for 15 seconds.
- d.100°C for 15 minutes.

Answer:a

32) The inhibition of acetylcholine release into the neuromuscular junction is mediated by? Select one:

- a.Corynbacterium diptheriae.
- b.Bordetella pertussis.
- C.Bacilius anthracis.
- d.Clostridium tetani....

Answer:d

33) The cell wall of gram-negative bacteria may contribute to the development of septic shock. Identity the component which is most associated with the induction of septic shock? Select one:

- a.Capsular protein
- b.Lipopolysaccharide

- C. Peptidoglycan
- d. Phospholipid
- e. Teichoic acid

Answer: b

34) Which of the followings is an example on transmission by droplet nuclei (airborne)? Select one:

- a. E. coli.
- b. measles
- c. hepatitis C.
- d. Cholera
- e. Hepatitis A

Answer: b

35) Which pair of microorganisms would you expect to be MOST closely related? Select one :

- a. Yeasts and actinomycetes
- b. Staphylococcus and Escherichia
- c. Enterobacter aerogenes and Enterobacter cloacae.
- d. Streptococcus pyogenes type a and Streptococcus pyogenes type b.
- e. Micrococcus and Staphylococcus.

Answer: d

36) When a bacteriophage is integrated into a cellular genome it is called a? Select one:

- a. virulent virus.
- b. lytic virus.
- c. prophage

d.transducing virus

e.microphage

Answer:c

37) Two bacteria are start growing in ideal growth environment, How many organisms after three growth cycles you will count? Select one :

a.2

b.4

c.8

d.16

e.32

Answer:d

38) Cell walls of Fungi are made of a polymer called? Select one: غير مطلوب

a.Cellulose.

b.Chitin.

C.Peptidoglycan

d.The S-layer.

e.Fungi do not have cell walls

Answer:b

39) Zoonotic infection, which of the followings is TRUE? Select one: غير مطلوب

a.Refers to infections coming to humans from animals and they represent a major health challenge

b.Refers to infections from human to animals leading to decrease available livestock

C.Is mainly a hospital acquired infections

d.They are not subjected to the chain of infection stages

e.It refers to infections between animals in the zoo

Answer:a

40) Which of the followings is INCORRECT regarding bacterial genetics? Select one:

- a.Bacteria take up DNA from their environment through a process called transformation.**
- b.The movement of DNA between bacteria by viruses is called transduction**
- C.Conjugation is the direct transfer of DNA by bacteria via plasmids.**
- d.Cloning is an artificial transformation.**

Answer:e

41) Salt and sugar preserve foods because they? Select one:

- a.Deplete nutrients**
- b.Transforming the nature of food**
- C.Make them acid.**
- d.Produce a free toxic form of Oxygen.**
- e.Produce a hypertonic environment**

Answer:e

42) When a group of bacteria are divided and remain attached together like a grape this arrangement is called? Select one:

- a.Diplo.**
- b.Mono.**
- c.Tetrad.**
- d.Strepto**
- e.Staphylo.**

Answer:e

44) MacConkey agar is considered a? Select one : غير مطلوب

- a. Basal media
- b. Transport media.
- C. Storage media.
- d. Enriched media.
- e. Differential media.

Answer:e

45) Antisepsis is best described as? Select one: غير مطلوب

- a. Using alcohol or iodine to reduce the pathogenic organisms on skin so they no longer represent a pathogenic risk.
- b. 100% killing of all forms of microbial life on living tissue such as skin.
- C. Subjecting living healthy tissue to ethylene oxide to kill spores.
- d. Killing viruses on living tissue by temperature.
- e. Using sodium hypochlorite to disinfect skin.

Answer:a

46) In treating infections, antibiotics should be used with precaution in which of the followings? Select one :

- a. Those with history of antibiotic hypersensitivity (allergy).
- b. Pregnants.
- C. Children
- d. Patients with impaired kidney functions.
- e. All mentioned choices

Answer:e

47) Viral envelope consists of? Select one: غير مطلوب

- a. Viral glycoproteins and host lipids.
- b. Viral lipids and Host glycoproteins.

c. Carbohydrates and host lipids.

d. Only host-cell-derived lipids

e. Only Viral glycoproteins.

Answer:a

48) Which of the following is CORRECT? Select one:

a. Neisseria meningitidis has no capsule

b. Helicobacter pylori has no flagella.

c. Rickettsia are obligate extracellular parasites with regular shapes.

d. Shigella is a gram positive

e. Neisseria meningitidis can reach the CNS

Answer:e

49) In which phase of bacterial growth are the number of growing equal the number of dying bacteria? Select one :

a. Lag

b. Log

c. Stationary.

d. Death.

e. Eclipse.

Answer:c

50) One of the following antibiotics acts by net inhibiting purines synthesis? Select one:

a. Oxolinic acid.

b. Trimethoprim.

c. Chloramphenicol

. d. Tetracycline.

e. Cephalosporin.

Answer:b

51) Hepatitis D virus is? Select one: غير مطلوب

- a.A prion
- b.A defective virus
- C.Pseudovirion
- d.Viroid
- e.Molecule of RNA with no capsid protein or envelope

Answer:b

52) Single-stranded DNA is the genetic material of? Select one: غير مطلوب

- a.Caliciviruses
- b.Flaviviruses.
- C.Papillomaviruses.
- d.Parvoviruses.
- e.Herpesviruses.

Answer:d

53) Which of the following is characteristic of the lytic cycle? Select one:

- a.Many bacterial cells containing viral DNA are produced.
- b.Viral DNA is incorporated into the host genome.
- C.The viral genome replicates without destroying the host.
- d.A large number of phages is released at a time
- e.The virus-host relationship usually lasts for generations.

Answer:d

54) Which of the followings is an example on transmission by respiratory droplet?
Select one :

- a.Enterococcus faecalis.

b.Diphtheria

C.Hepatitis

d.Cholera.

e.Hepatitis

Answer:b

55) Which of the followings can be isolated from a rusty nail and can interfere with the normal muscle contraction? Select one :

a.Clostridium tetani

b.Bordetella pertussis.

C.Bacillus anthracis.

d.Neisseria meningitides

. e.Haemophilus influenza

Answer:a

56) Which of the followings is INCORRECT regarding Clostridium difficile? Select one :

a.Normal flora of the colon with high numbers in the stool.

b.Opportunistic bacteria.

C.Causes antibiotic associated colitis.

d.Enterotoxins that damage intestine

e.Major cause of diarrhea in hospitals

Answer:a

57) The cell wall of gram-negative bacteria may contribute to the development of septic shock. Identify the component which is most associated with the induction of septic shock? Select one:

- a. Capsular protein
- b. Lipopolysaccharide
- c. Peptidoglycan
- d. Phospholipid
- e. Teichoic acid

Answer:b

الطبيب الجراحة
لجنة

Wateen – med

1) One of these statements true regarding Distifection :

A-is the elemnation of chemical substance

B-is the elemnation of pathogens expect spores

C-is the elemnation of pathogens with spores

Answer: B

2) Which of the following is incorrect?

A)S.areus catalase + and coagulase+

B)streptococcus type b is beta hemolytic

C)cerus can cause serious infection from food

D)tetanus have terminal spore

E)botulinum interfere with realse ACH

Answer: C

3) Items such as media , liquids , and instruments are usually autoclaved at ?

Select one :

A.) 121 ° C For 15 minutes

b.) 63 ° C for 30 minutes .

c.) 72 ° C for 15 seconds .

d.) 100 ° C for 15 minutes .

Answer: A

4) After using a syringe to take a blood sample , one of the following is TRUE ?

Select one :

- A. Recap the needle immediately
- b. Leave the syringe on the patient's bed , wait an hour then recap the needle .
- C. Swap the needle with alcohol then recap the needle .
- d. Never recap the needle and discard the syringe in the yellow sharp pin
- e. Throw the syringe in the black plastic bag .

Answer: D

5) All of the following is PPE except :

- 1) grow
- 2) respirator is properly fitted
- 3) goggles
- 4) washing hand

Answer: 4

6) Zoonotic term is :

- 1) brucella in human from animal (example)
- 2) pathogen in human transmitted to animal

Answer: 1

7) Highly motile bacteria in stomach is :

- 1) H pylori
- 2) V.cholera
- 3) brucella

Answer :1

8) pseudomembrane which can cause asphyxiation , in which bacteria :

- 1) listeria
- 2) clostridium tetani
- 3) corynebacterium diphtheriae

Answer: 3

9) Which bacteria cannot stain which gram stain because it's complex waxes :

- 1) mycobacterium
- 2) diphtheriae
- 3) listeria monocytogenes

Answer: 1

10) All of the following is true about mycobacterium except :

- 1) gram positive
- 2) strict aerobic
- 3) acid fast staining
- 4) grow fast in lab

Answer: 4

11) Bacteria that cause antibiotic associated colitis is :

- 1) Clostridium perfringens
- 2) c . Difficile
- 3) Mycobacterium

Answer: 2

12) Bacteria have central spore is :

- 1) b.anthraxis
- 2) clostridium tetani
- 3) bacillus cereus

Answer: 1

13) Which bacteria is catalase and coagulase negative and beta haemolytic :

- 1) s.pneumonia
- 2) virdanstreptococci
- 3) s.pyogenes

Answer: 3

14) Which of the following bacteria inhibit muscle contraction :

- 1) clostridium botulinum
- 2) clostridium Tetani
- 3) bacillus cereus

Answer: 1

15) The best describe of lag phase is :

- 1) maximum growth
- 2) rate of cell growth equal rate of cell death
- 3) initiation adjustment

Answer: 3

16)When you culture bacteria without known requirement for oxygen , at the second day you found bacteria at the bottom and surface (at the surface more than bottom) the true concept of this bacteria is :

- 1) microaerophile
- 2) obligate anaerobe
- 3) obligate aerob
- 4) facultative anaerob

Answer: 4

17) Comma bacteria is :

- 1) neutrophiles
- 2) alkaliphiles
- 3) psychrophiles

Answer: 2

18) Which of the following is false :

- A. O antigen can act as endotoxins
- B. Lipid A stableite outer membrane structure
- C. Lipid A may cause septic shock

Answer: A

19) All of the following is true except :

- 1) Robert Hooke : discovered animalcules
- 2) pasteur: vaccine concept
- 3) koch's postulate: one micro bone disease
- 4) botanist launching the field of virology

Answer: 1

20) The best describes of species :

- 1) Related to strain
- 2) Sub set of species
- 3) Related of species
- 4) Related of genera

Answer: 1

21) True classification of bacteria is :

- 1) Kingdom , phylum , class , order , family , genus , species
- 2) Phylum , kingdom , class , order , family , genus , species
- 3) Class , order , family , division , genus , species

Answer: 1

22) All of the following about yeast is true except :

- 1) eukaryotic
- 2) multicellular
- 3) 5-10mm
- 4) grow in artificial laboratory media

Answer: 2

23) All of Key points for infection control and personal hygiene true except :

- 1) Restrain hair, prevent drop organisms
- 2) Minimum jewellery
- 3) Keep nails short

4) cover open wound with an occlusive dressing

5) Wearing ties, coats and long sleeve

Answer: 5

24) All of the following is classification of cocci except :

1) diplococcus

2) tetrads

3) sarcinae

4) palisade

Answer: 4

25) One of the following is true regarding free radicals

1)Hydrogen peroxide break down by catalase only

2) superoxide free radical inhibition by two enzymes

3)Hydrogen peroxide break down by peroxidase only

4)Superficial free radical inhibition by one enzyme

Answer: 2

26) Which of the following found in polymorph nuclear leukocytes

1) H.influenza

2) Nisseria

3)shigella

Answer: 2

27) The way to get Carbon from Carbon dioxide in the night

1)chemoheterotrophs

2)photoheterotrophs

3)chemoautrterotrophs

4)photoautrterotrophs

Answer: 3

28) Which of the following extract from intestine to blood stream

1)S.typhi

2)E.Coli

3)S.enteritidis

Answer: 1

29) Which of the following inhibit peptidoglycan synthesis

1-penicillins

2-vancomycin

3-rifampicin

Answer: 2

30) Which of the following is incorrect?

1)S.areus catalase + and coagulase+

2)streptococcus type b is beta hemolytic

3)cerus can cause serious infection from food

4)tetanus have terminal spore

5)botulinum interfere with realse ACH

Answer: 3

31) One of these statements true regarding Distifection

A-is the elemnation of chemical substance

B-is the elemnation of pathogens expect spores

C-is the elemnation of pathogens with spores

Answer: B

32) Group a streptococcus are :

A) B hemolytic

B) S. epidermidis

C) Coagulase negative

Answer: A

33) Which of the following can cause pseudomembranous and asphyxiation:

A) Diphtheria

34) All of the following is true about mycobacterium except:

A) Gram positive irregular bacilli

B) Acid fast staining

C) Grow very fast

Answer: C

35) Cerebra spinal fluid test for meningitis has shown gram negative diplococcus bacteria:

A) Neisseria meningitides

B) Hemophilic influenza

Answer: A

36) Which of the following can be isolated from stomach :

- A) H pylori
- B) E coli
- C) Vebrio cholra

Answer: A

37)All of the following could be isolated from stagnated water except:

- A) Vibreo collera
- B) Shigella
- C) E coli
- D) Haemophilus influenzae

Answer: D

38)Which is the following is spirochetes:

- A) treponema
- B)haemophilus influenza

Answer: A

39)Which of the following is invasive penetrating bacteria:

- A) S typically
- B) Vibrio cholera

Answer: A

40) Group a streptococcus are :

- A) B hemolytic

”إنما تقطع دروب الحياة الشاقة، وتطوى المسافات النائية، وتقضى الأسفار المضنية ؛ بالايمان والتوكل والعزيمة والثقة واليقين واستحضر أن الله خير صاحب وسند ومعين، فما طابت الأيام إلا به، وما قضيت الأمور إلا بتوفيقه، وهو نعم المولى والوكيل”

لا تنسوننا من صالح دعائكم

مع أمنياتنا بالتوفيق والنجاح

#لجنة_الطب_والجراحة