

Group 3(A+B)

By: Alham majed

1 RTA

HR=43

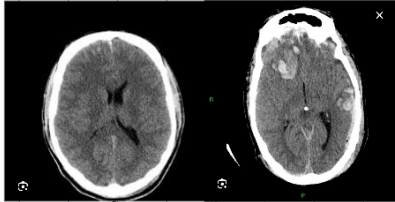
BP=180/120

Admitted ICU, ventilated

Open eye response pain

Produce sound

Extension



1) cause vital sign is abnormal? Cushing triad

2) GCS? 6

3) Dx to image? Contusion

4) tx? head elevation and mannitol

2

1) All of the following w NF2?

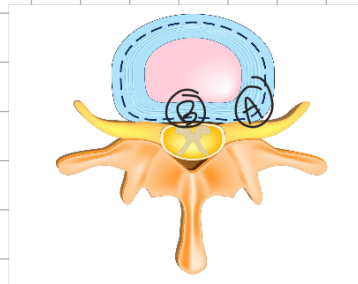
2) Schwannomas, one is true? Slow growing and benign

3 Prolapse () C4, C5

1) acute prolapse in site a?

2) acute prolapse in site b?

3) lost? Shoulder abduction



4 Subarachnoid hemorrhage

1) most common cause death? rebleeding

2) complication never occur before 3 days? Vasospasm

3) most common cause? trauma

Most art in epidural hematoma? MMA

What is the mean arterial pressure to prevent ischemia or to happen? 70-90

Icp = 20

Pineloma

Most common primary hormone ass w pineal gland ?

Cause ?

What is not included in of parnoid triad ?

Not ass with pineloma ?skin rash