

pathology

Archive

Labs

Corrected By :

Sura Qasem

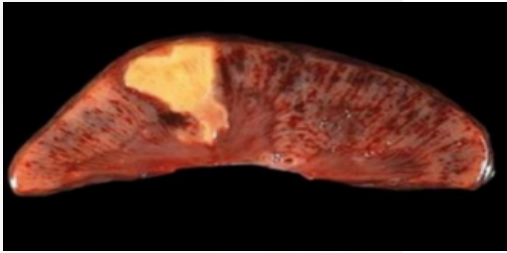
Alaa Alsbou

Designed By :

Raneem Dmour



1) According to below picture , this is:

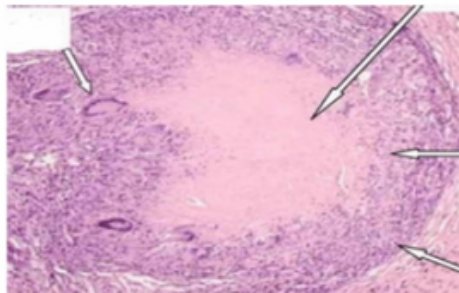


- A. Liquefactive necrosis
- B. Gangrenous necrosis
- C. Caseous necrosis
- D. Fat necrosis
- E. Coagulative necrosis

Answer : E

Note: This picture is not related to our lectures, but it is from Rouh's lectures

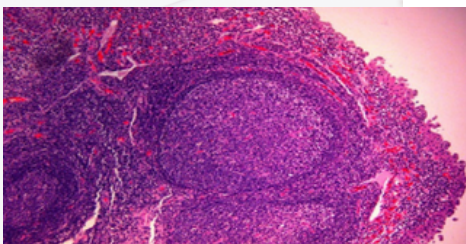
2) the multinucleated cell in below picture:



- A. lymphocytes
- B. Macrophage

Answer: B

3) According to below picture which is indicate:

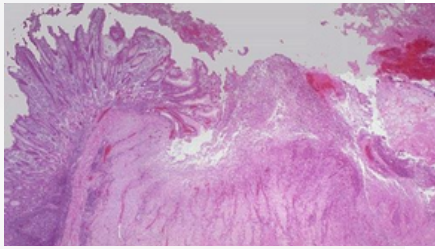


- A. coagulative necrosis
- B. granulation tissue
- C. tertiary lymphoid organ

Answer: C

Note: This picture is not related to our lectures, but it is from Rouh's lectures

4) Identify the below picture:



- A. necrosis
- B. Tumor
- C. ulcer

Answer : C

5) According to picture the correct arrangement is:



- A. Hemostasis/inflammation/repair/remodelling
- B. Remodelling /repair/inflammation/hemostasis
- C. Inflammation / hemostasis/repair/ remodelling
- D. Hemostasis/inflammation/ repair/remodelling

Answer: A

6) Patient had a congestive heart failure and with as the below picture , what is the most serious in his history that causes it :



- A. Diabetes
- B. hypertension
- C. Lipidima
- D. obesity

Answer: B

7) According to below picture, the most sensitive test for it



- A. Ultrasound
- B. platelet count
- C. PTT
- D. PT

Answer : A

Note: This picture is not related to our lectures, but it is from Rouh's lectures

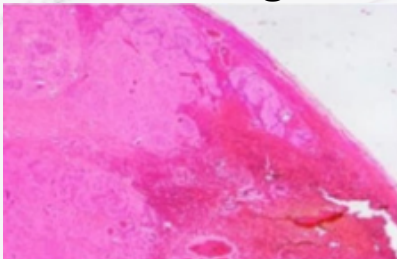
8) according to below picture , this is a:



- A. red infraction
- B. white infraction
- C. fat emblosim

Answer: B

9) The leading cause of below ovary's picture :

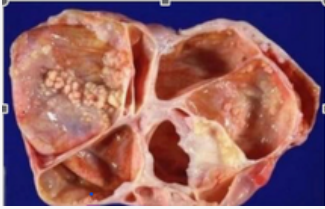


- A. ovary mass
- B. Hemorrhage

Answer: B

Note: This picture is not related to our lectures, but it is from Rouh's lectures

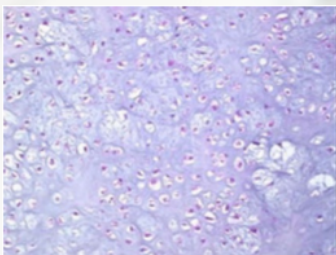
10) according to this picture which is tumor cells consists of three germ cell?



- A. Teratoma
- B. Lipoma
- C. Fibroma
- D. Hemangioma

Answer : A

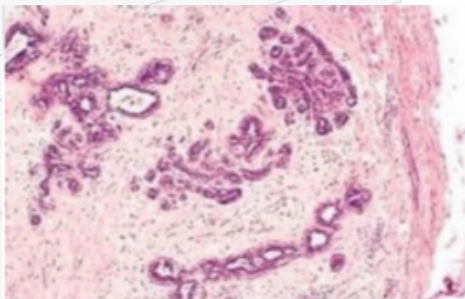
11) identify the following picture:



- A. Chondroma
- B. Chordoma

Answer: A

12) according to below picture which is unencapsulated tumor , this is :



- A. invasive breast cancer
- B. fibroadenoma

Answer: B