

# Shagaf

## Biochemistry Final

Done By:

Malak alqadi

Designed By :

Raneem Dmour



**1-Apoprotein used as a cofactor:**

- A. Apo A-I**
- B. Apo C-II**
- C. Apo B-100**
- D. Apo E**

**Answer:B**

**2-the lipoprotein contains lowest phospholipid**

- A. CM (Chylomicrons)**
- B. VLDL (Very Low-Density Lipoprotein)**
- C. LDL (Low-Density Lipoprotein)**
- D. HDL (High-Density Lipoprotein)**

**Answer:A**

**3-human milk secretion stimulated by**

- A. Oxytocin**
- B. Prolactin**
- C. Estrogen**
- D. Progesterone**

**Answer:B**

**4-the simplest amino acid is**

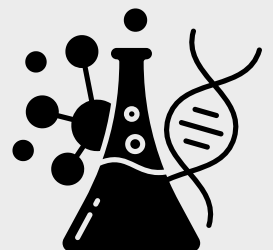
- A. Glycine**
- B. Alanine**
- C. Valine**
- D. Proline**

**Answer:A**

**5-The active form of Ca**

- A. Calcium carbonate**
- B. Calcium citrate**
- C. Calcium phosphate**
- D. Ionized calcium**

**Answer:D**



6-which of the following give this secondary structure of the protein its stability

A-backbone

B-side chain

C- it's bonds

Answer:A

7-One of the following is primary bile acid

A- Chenodeoxycholic acid

B-lithocholic acid

C-Tauro-Deoxycholic

D- Tauro-lithocholic

E-glyco-cholic

Answer:A

8-which of the following is the lowest in phospholipids content

A-HDL

B-LDL

C-CM(Chylomicrons)

D;VLDL

Answer:C

9-the number of OH ,double bond in the testosterone

A-1,1

B-1,2

C-2,1

D-2,2

Answer:B

10-sugar that exists in the insects

A-glucose

B-fructose

C-sucrose

D-chitin

Answer:D

11-one of the following is non-reducing sugar

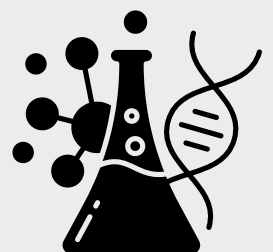
A. Glucose

B. Fructose

C. Sucrose

D. Lactose

Answer:C



**12-how to distinguish between two isoenzymes**

**A -increase the concentration of the substrate**

**B-increase the concentration of the enzyme**

**C-Km and Vmax**

**D-(K-1+ K1+ K2 + K -2 neglected)**

**Answer:c**

**13-binding of substrate to active site**

**A-temporary and complimentary**

**B-Permanent and non-specific**

**C-Weak and non-selective**

**D-none of the above**

**Answer:A**

**14-an example of derived lipids**

**A-fatty acid**

**B. Steroids**

**C. Triglycerides**

**D. Phospholipids**

**Answer-A**

**15-best source of iron is**

**A-cereals**

**B-milk**

**C-organ meat**

**D-wheat**

**E-molasses**

**Answer:c**

**16-Which of the following atoms does not participate in hydrogen bonding**

**A-O**

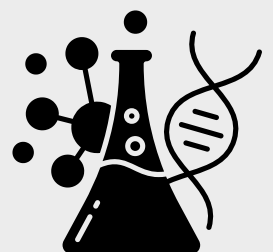
**B-F**

**C-P**

**D-CL**

**E-N**

**Answer:C**



**17-the migration of charged solutes or particles in a liquid medium under the influence of an electrical field**

- A-liquid chromatography**
- B-gas chromatography**
- C-thin layer chromatography**
- D- paper chromatography**
- E-electrophoresis**

**Answer:E**

**18-which one of the carbohydrates stimulates the absorption of calcium**

- A. Lactose**
- B. Sucrose**
- C. Maltose**
- D. Cellulose**

**Answer:A**

**19-functional groups in testosterone**

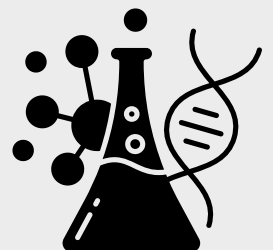
- A. one Hydroxyl and one carbonyl**
- B. One Aldehyde and one carboxyl**
- C. One Hydroxyl and one ester**
- D. One Carboxyl and one amine**

**Answer:a**

**20-in gas chromatography the stationary phase and mobile phase:**

- A-liquid,liquid**
- B-gas, gas**
- C-liquid,gas**
- D-gas,liquid**
- E-solid,liquid**

**Answer: c**



21-What are the similarities between myoglobin and the subunits of hemoglobin

A-no obvious relation between them

B-similar in both primary structure and tertiary structure

C-different in primary structure and tertiary structure

D-similar in primary structure but different in tertiary structure

E-similar in tertiary structure but different in primary structure

Answer:e

22-If we eat mansaf, which vitamin should we take to enhance the absorption of iron from the meat

A. Vitamin A

B. Vitamin C(ascorbic)

C. Vitamin D

D. Vitamin E

Answer:B

23-all of the following enhance the absorption of calcium except

A. Parathyroid hormone

B. Lactose

C. Lysine

D. pH

Answer:D

24-In the secondary structure of a protein, in an alpha helix, how many amino acids apart are the amino acids involved in a hydrogen bond?

A. 2 residues apart

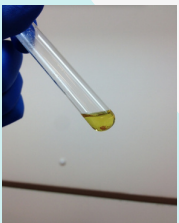
B. 3 residues apart

C. 4 residues apart

D. 5 residues apart

Answer: C

25-Which amino acid reacts with ninhydrin and gives this color



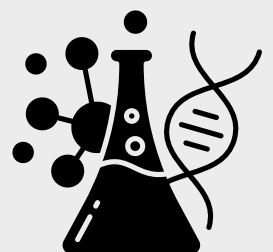
A. Glycine

B. Serine

C. Proline

D. Alanine

Answer:c



26-What test is used to distinguish between lactose and glucose in urine for pregnant

A-Ninhydrin

B-Bradford

C-osazon

D-none of the following

Answer:c

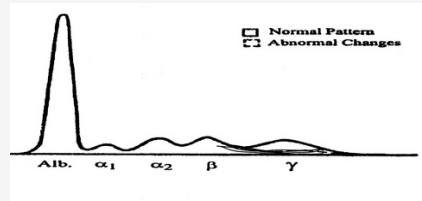
27-what is your diagnosis here:-

A-Myelomas

B-lymphoma

C-Nephrotic syndrome

D-AIDS



Answer:D

28-Which of the following best describes globoside

A- A protein linked to multiple sugars

B- A lipid linked to multiple sugars and ceramide

C- A single sugar attached to a lipid

D- A glycoprotein found in cell membranes

Answer:B

29-A patient presents with symptoms of heart muscle enlargement and yellowing of the whites of the eyes. Which of the following conditions is most likely

A- Hypertension

B-Anemia

C- Hepatitis

D-Diabetes

Answer:B

30-Which of the following describes the structure of a steroid

A-It contains 18 carbons with a methyl group on carbon 19

B-It contains 21 carbons with a methyl group on carbon 19

C- It contains 19 carbons with a methyl group on carbon 18

D- It contains 20 carbons with a methyl group on carbon 18

Answer:c

