

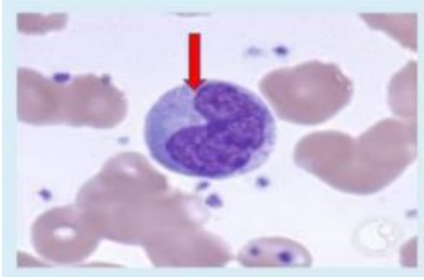
# HISTOLOGY

**LAB EXAM**  
**WATEEN BATCH**

إعداد :



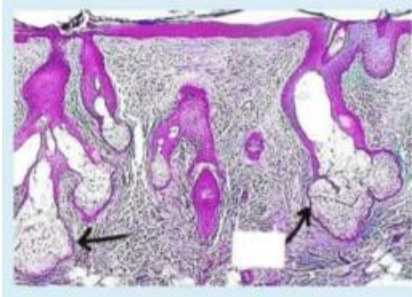
1) Identify the pointed cell \_?



- a. Eosinophils
- b. Basophil
- c. Lymphocyte
- d. Monocyte
- e. Macrophage

D

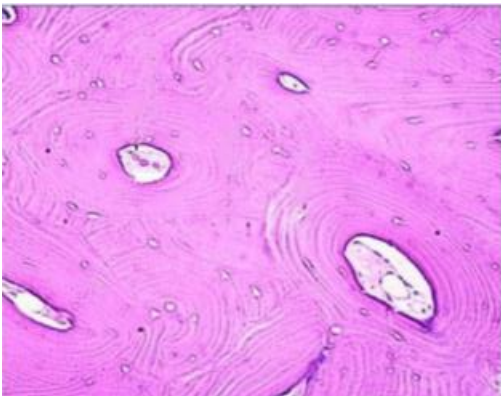
2) The pointed structure is \_?



- a. Tubular gland
- b. Sebaceous gland
- c. Goblet cell
- d. Taste bud
- e. Myoepithelium

B

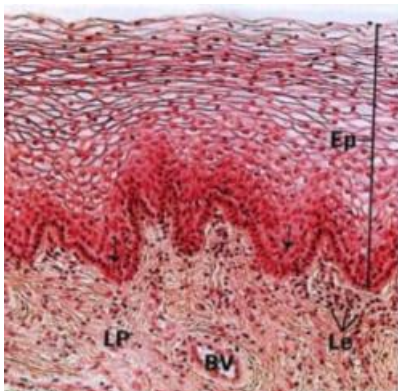
3) Identify tissue type \_\_\_?



- a. Decalcified bone
- b. Ground bone
- c. Spongy bone
- d. Periosteum
- e. Endosteum

A

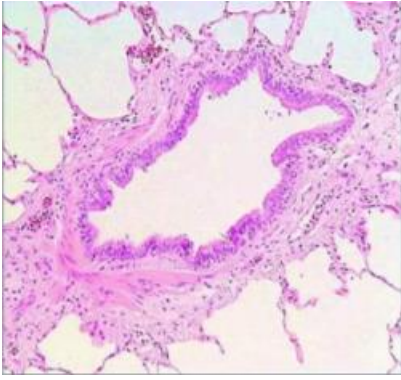
4) identify the tissue \_?



- a. Non keratinized stratified squamous
- b. Stratified columnar epithelium
- c. Transitional epithelium
- d. Keratinized stratified squamous
- e. Simple columnar epithelium

a

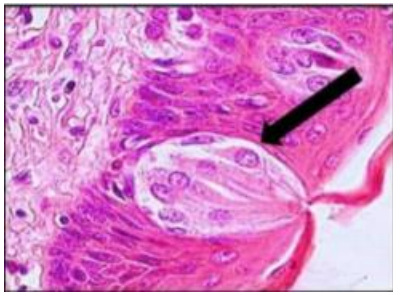
5) identify the specimen?



- a. Muscular artery
- b. Bronchiole
- c. Trachea
- d. Bronchus
- e. Esophagus

B

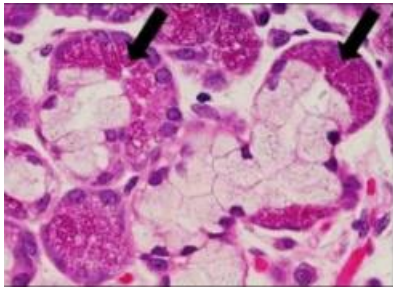
6) Arrow points to 7



- a. Pancreatic acini
- b. Palatine tonsil
- c. Myoepithelium
- d. Taste bud
- e. Lingual salivary gland

D

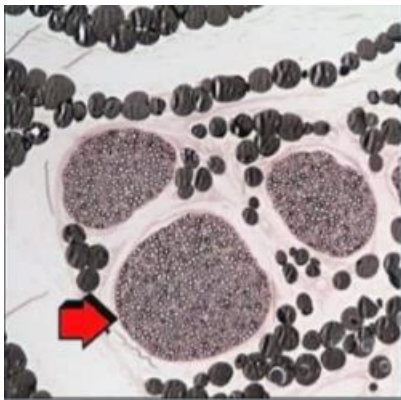
7) Arrows point to \_?



- a. Crescent of Gianuzzi
- b. Mucous acini
- c. Serous acini
- d. Goblet cells
- e. Von- Ebner's gland

B

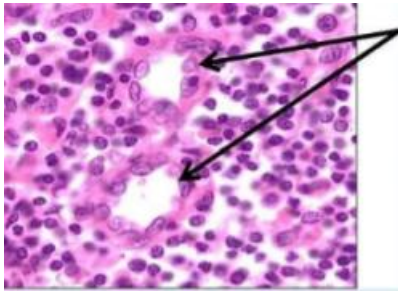
8) Identify a tissue type\_?



- a. Gray matter
- b. Spinal cord
- 0. Sensory ganglia
- d. Peripheral nerve
- e. Autonomic ganglia

D

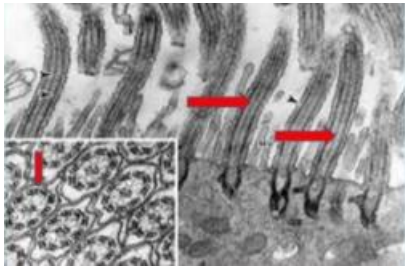
9) The pointed structures are found in the \_?



- a. Red pulp of spleen
- b. White pulp of spleen
- c. Medulla of thymus
- d. Lymph node
- e. Bone marrow

D

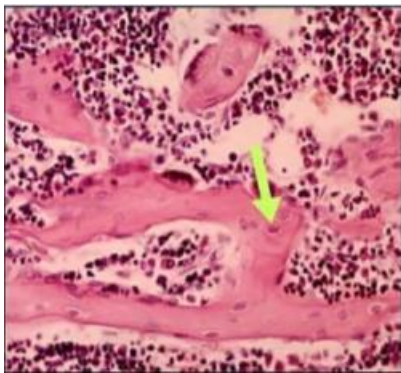
10) Identify the pointed structure \_?



- a. Microvilli
- b. Occluding Junction
- c. Cilia
- d. Tight junction
- e. Desmosome

C

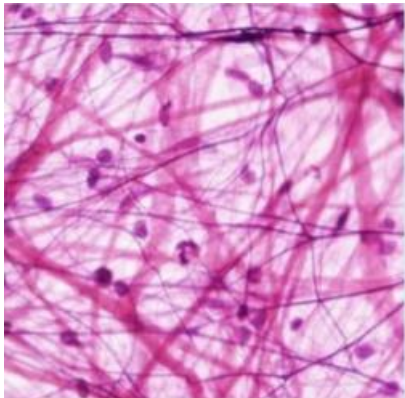
11) identify a cell type\_?



- a. Osteoblast
- b. Osteoclast
- c. Osteocyte
- d. Osteoprogenitor cell
- e. Chondrocyte

C

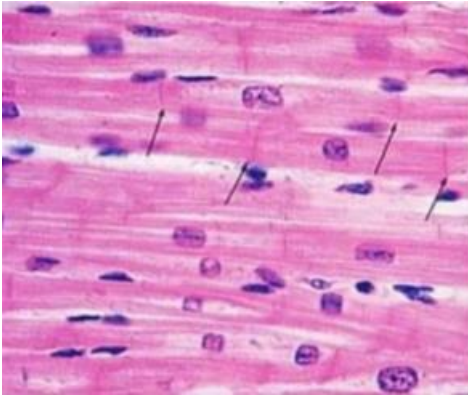
12) Identify the tissue \_?



- a. Dense irregular connective tissue
- b. Reticular connective tissue
- c. Elastic connective tissue
- d. White fibrous connective tissue
- e. Loose areolar connective tissue

E

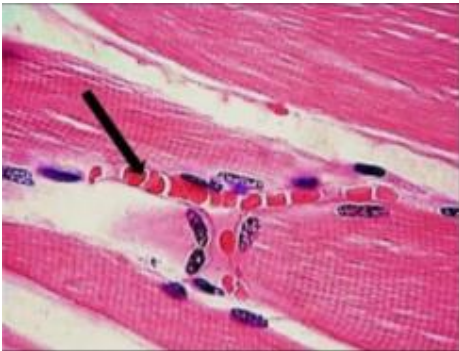
13) Identify a tissue type \_?



- a. L.S skeletal muscle
- b. L.S cardiac muscle
- c. T.S skeletal muscle
- d. T.S cardiac muscle
- e. L.S smooth muscle

B

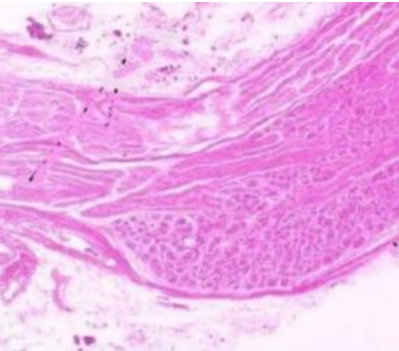
14) Arrows point to \_?



- a. Sinusoid
- b. Arteriole
- c. Arterio- venous anastomosis
- d. Venule
- e. Capillary

E

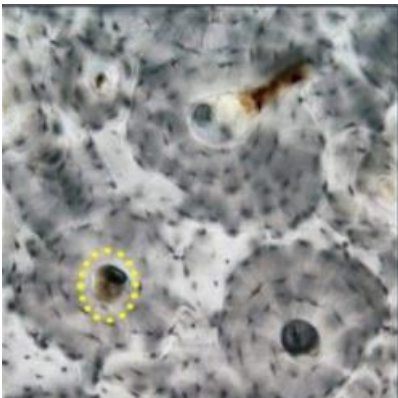
15) identify a tissue type\_?



- a. Gray matter
- b. Spinal cord
- c. Sensory ganglia
- d. Peripheral nerve
- e. Autonomic ganglia

C

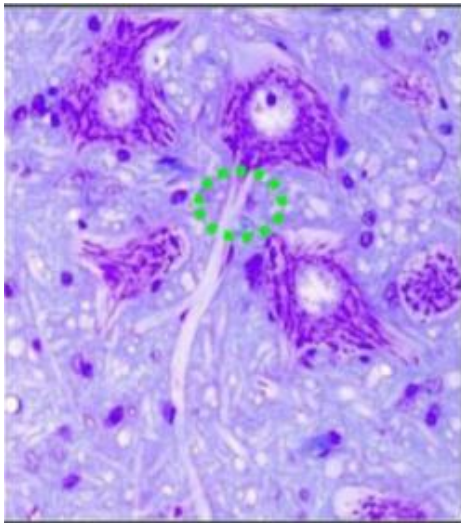
16) Identify a histological feature\_?



- a. Osteon
- b. Volkman's canal
- c. Canallculi
- d. Lacunae
- e. Central canal

A

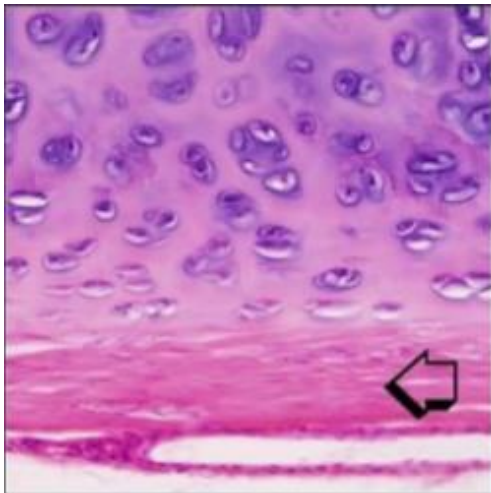
17) Identify a histological feature ?



- a. Nissle bodies
- b. Perikaryon
- c. Axon hillock
- d. Dendrites
- e. Axon

C

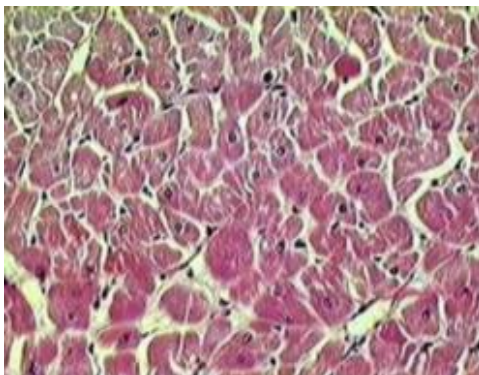
18) Identify a histological feature?



- a. Perichondrium
- b. Nest cell
- c. Lacunae
- d. Territorial matrix
- e. Articular cartilage

A

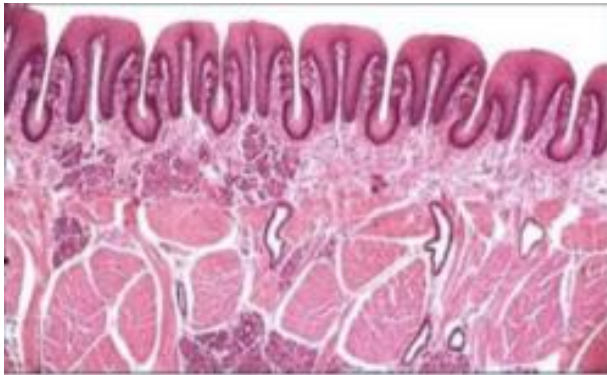
19) Identify a tissue type \_?



- 3. LS skeletal muscle
- b. L.S cardiac muscle
- c. T.S skeletal muscle
- d. T.S cardiac muscle
- e. L.S smooth muscle

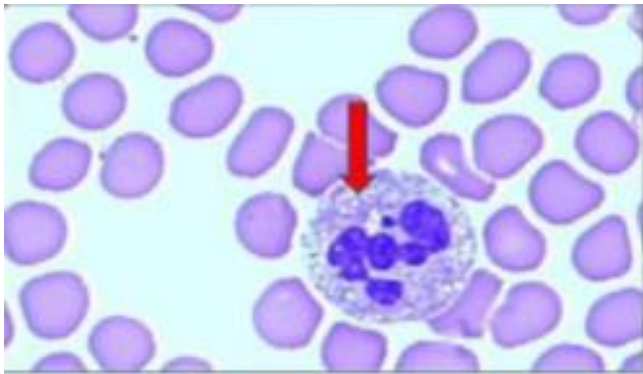
D

20) The section is showing \_\_\_\_?



- a. Filiform papillae
- b. Fungiform papillae
- c. Taste buds
- d. Circumvallate papillae
- e. Foliate papillae

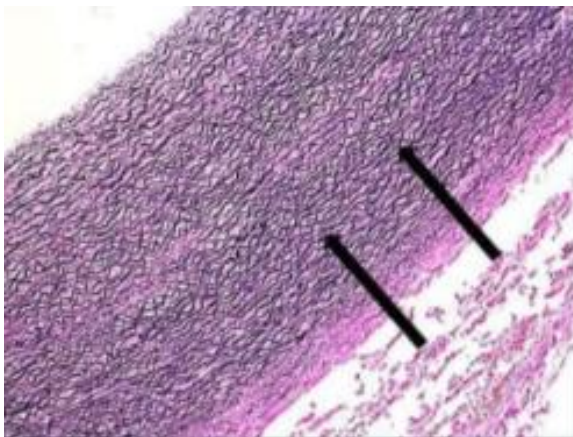
21) The pointed cell is \_?



- a. Macrophages
- b. Neutrophil
- c. Monocyte
- d. Lymphocyte
- a. Plasma cell

B

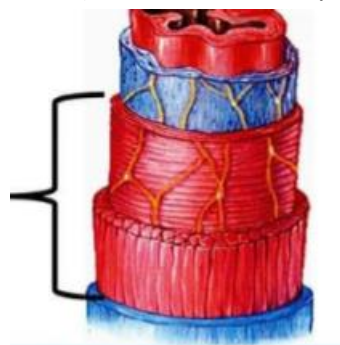
22) Arrows point to \_?



- a. Intima
- b. Adventitia
- c. Reticular fibers
- d. Elastic fibers
- e. Collagen fibers

D

23) The marked GIT layer is \_\_\_\_?



- a. Mucosa
- b. Submucosa
- c. Muscularis
- d. Adventitia
- e. Serosa

C

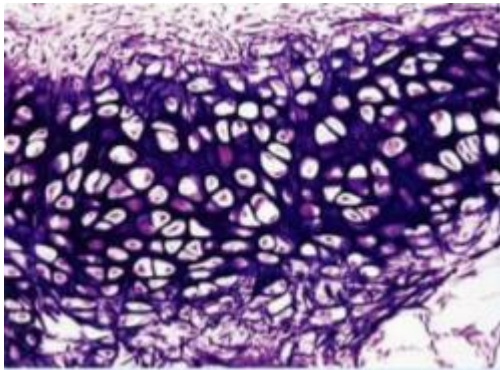
24) Identify the specimen?



- a. Lymph node
- b. Pancreas
- c. Spleen
- d. Parotid gland
- e. Thymus

C

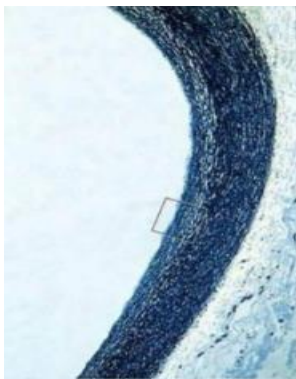
25) Identify a tissue type?



- a. Fibrous cartilage
- b. Trabecular bone
- c. intervertebral disc
- d. Articular cartilage
- e. Elastic cartilage

E

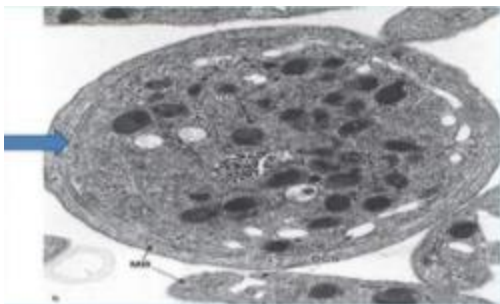
26) Identify the tissue ?



- a. Adipose connective tissue
- b. Elastic connective tissue VVG
- c. Dense regular connective tissue
- d. Elastic connective tissue osmic acid
- e. Reticular connective tissue silver stain

B

27) The pointed area is \_?



- a. Granules in mast cell
- b. Granules in Basophil
- c. Granules in neutrophil
- d. Hyalomere in platelets
- e. Granulomere in platelets

D



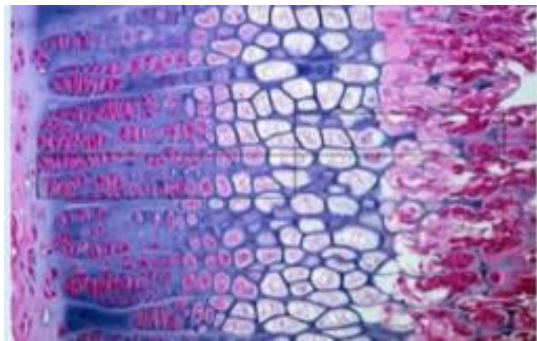
28) Identify the tissue \_?



- a. Non keratinized stratified squamous
- b. Stratified columnar epithelium
- c. Transitional epithelium
- d. Keratinized stratified squamous
- e. Simple columnar epithelium

C

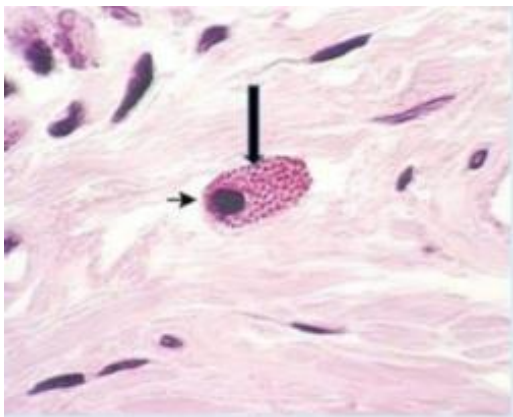
29) Identify the histological feature \_\_\_?



- a. Territorial matrix
- b. Isogenous growth
- c. Perichondrium
- d. Epiphyseal growth
- e. Haversian system (osteon)

D

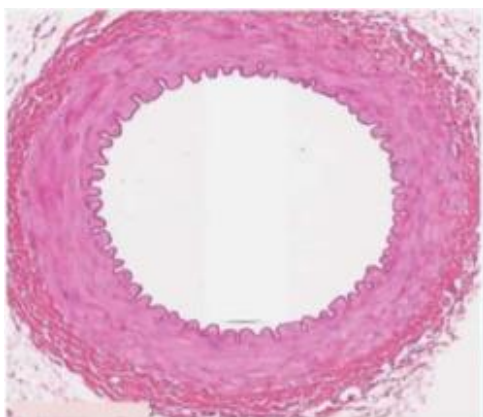
30) The pointed cell is \_?



- a. Mast cell
- b. Macrophages
- c. Basophil
- d. Plasma cell
- e. Fibroblast

A

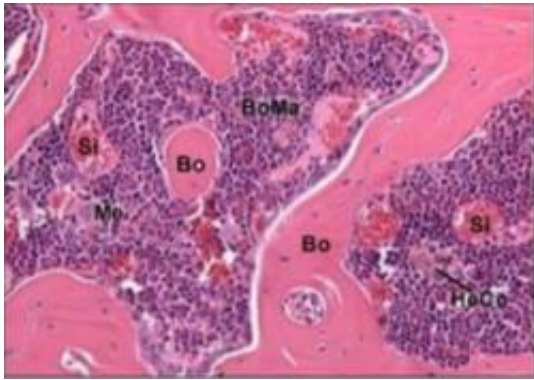
31) The cross section is in the '2



- a. Basilar artery
- b. Medium vein
- c. Vena cava
- d. Aorta
- e. Esophagus

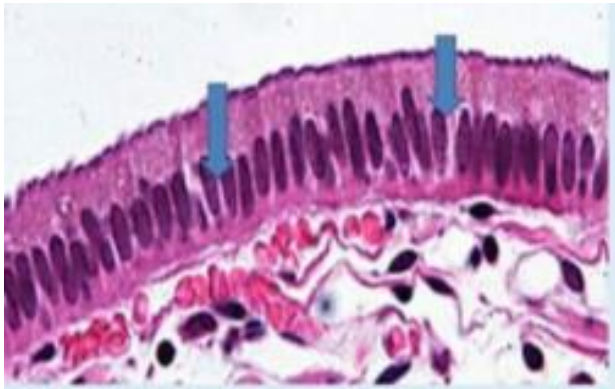
A

32) Identify the tissue \_?



- a. Adipose Connective tissue
- b. Red bone marrow
- c. Brown fat
- d. Yellow bone marrow
- e. Dense irregular Connective flssue

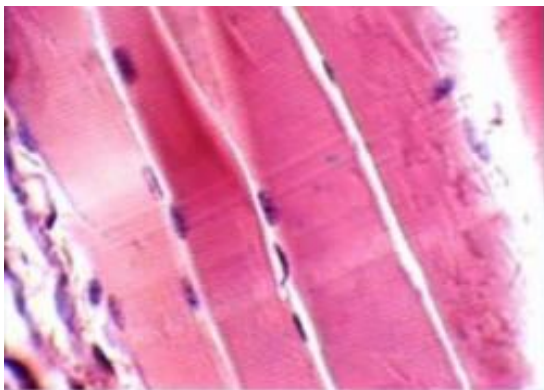
33) Identify the tissue \_?



- a. Simple squamous epithelium
- b. Simple cuboidal epithelium
- c. Transitional epithelium
- d. Non Keratlnized stratified squamous
- e. Simple columnar epithelium

E

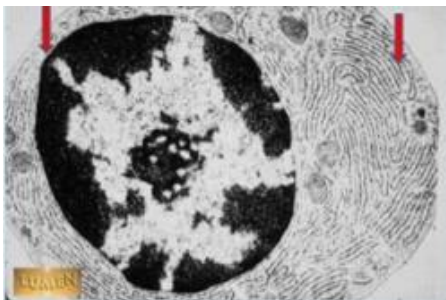
34) Identify a tissue type\_?



- a. TS skeletal muscle
- b. L.S cardiac muscle
- c. L.S skeletal muscle
- d. T.S cardiac muscle
- e. L.S smooth muscle

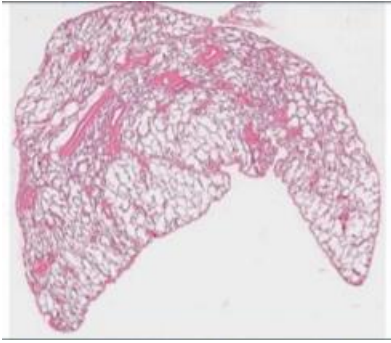
C

35) The pointed cell is ?



- a. Mast cell
- b. Macrophages
- c. Fibrocyte
- d. Plasma cell
- e. Fibroblast

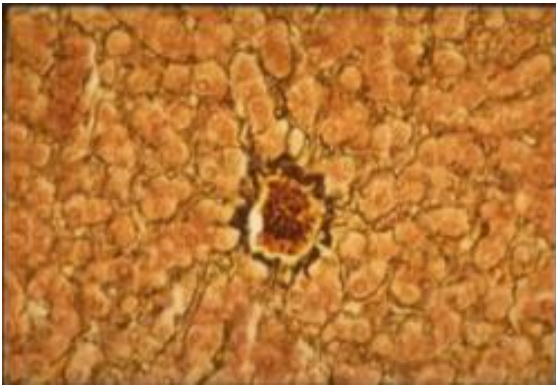
36) Identify the structure?



- a. Sublingual gland
- b. Spleen
- c. Tongue
- d. Lung
- e. Sinusoidal capillaries of the liver

D

37) Identify the tissue \_?



- a. Loose areolar connective tissue
- b. Mucoïd connective tissue
- c. Reticular connective tissue silver stain
- d. Adipose connective tissue
- e. Dense regular connective tissue

C

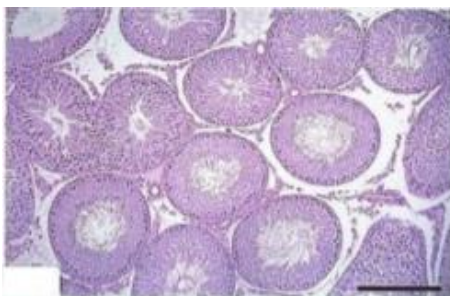
38) Arrow points to\_?



- a. Lamina propria
- b. Basal lamina
- c. Internal elastic lamina
- d. Submucosa
- e. Muscularis mucosa

B

39) identify the tissue \_?



- a. Taste bud
- b. Germinal epithelium
- c. Sebaceous gland
- d. Goblet cell
- e. Myoepithelium

B