

HISTOLOGY LAB 1

MUSCLE+

CARTILAGE

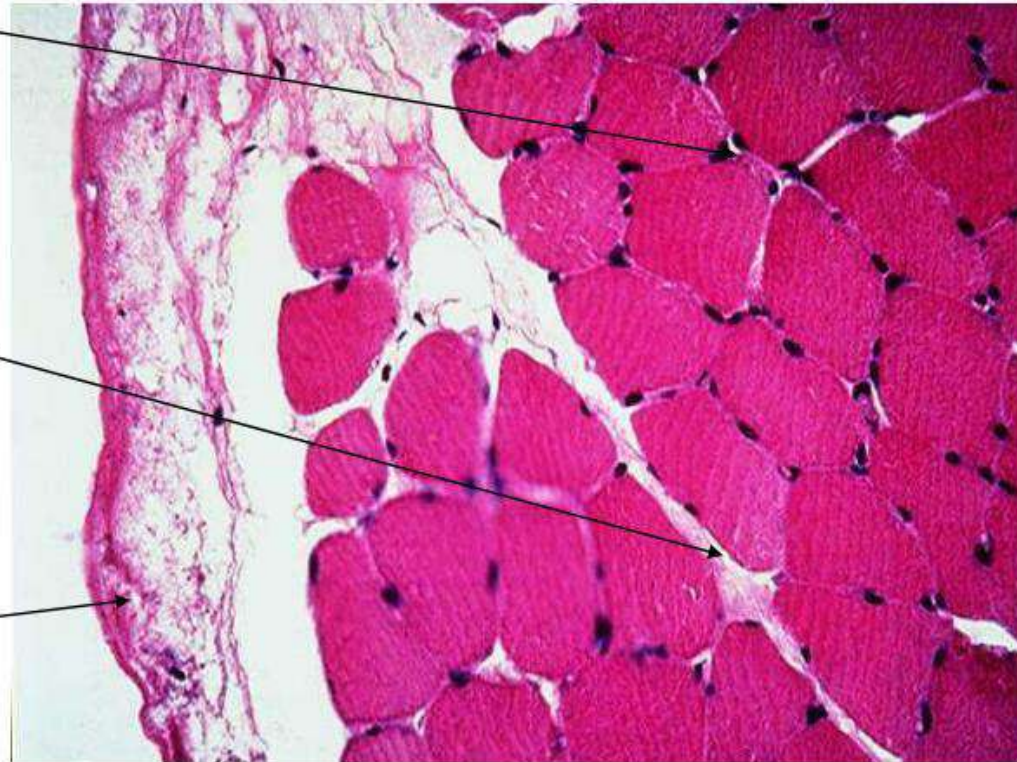
Ass. Prof Dr. Heba Hassan Abd El-Gawad

Skeletal Muscle Cross section

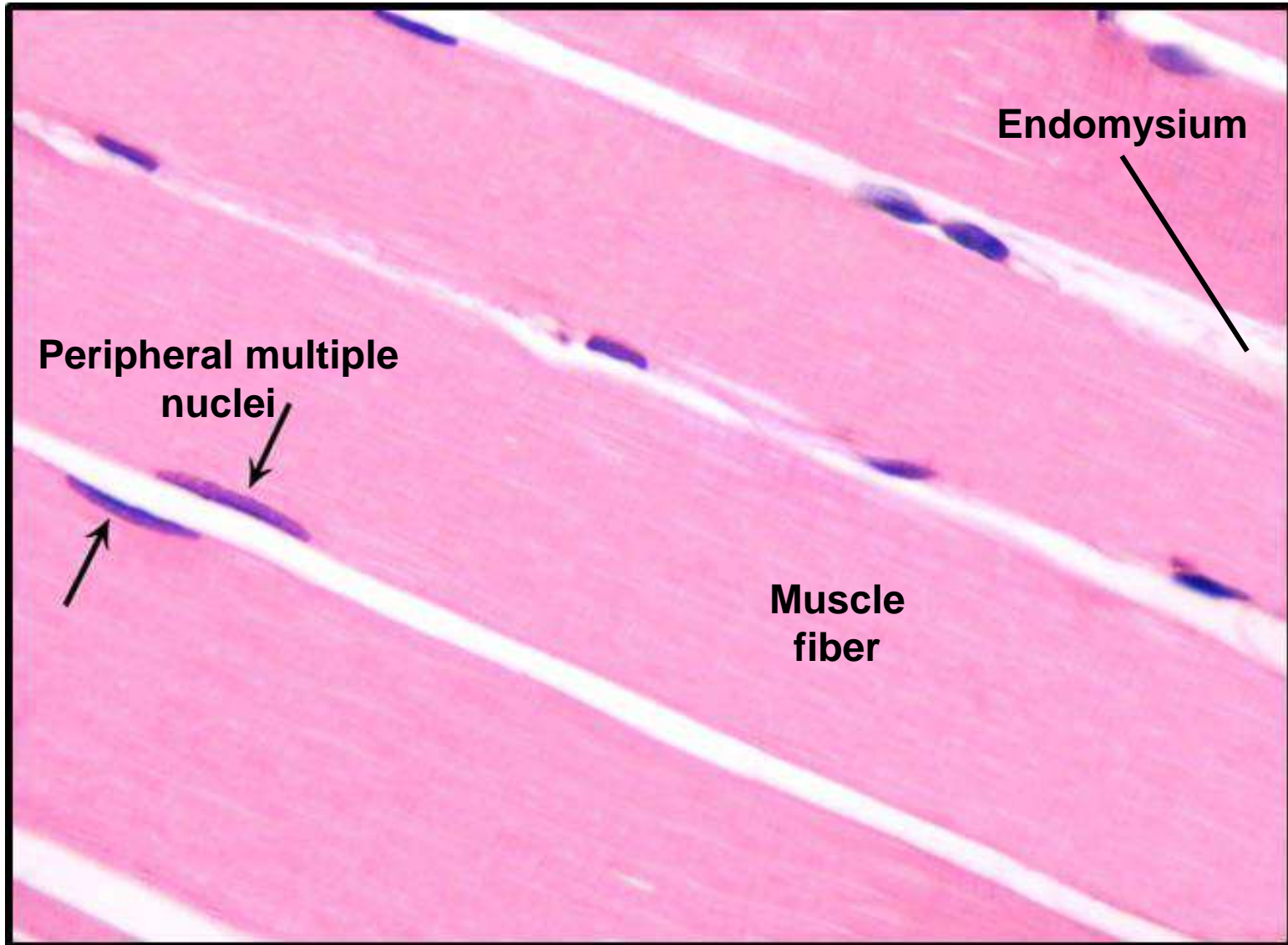
- Endomysium

- Perimysium

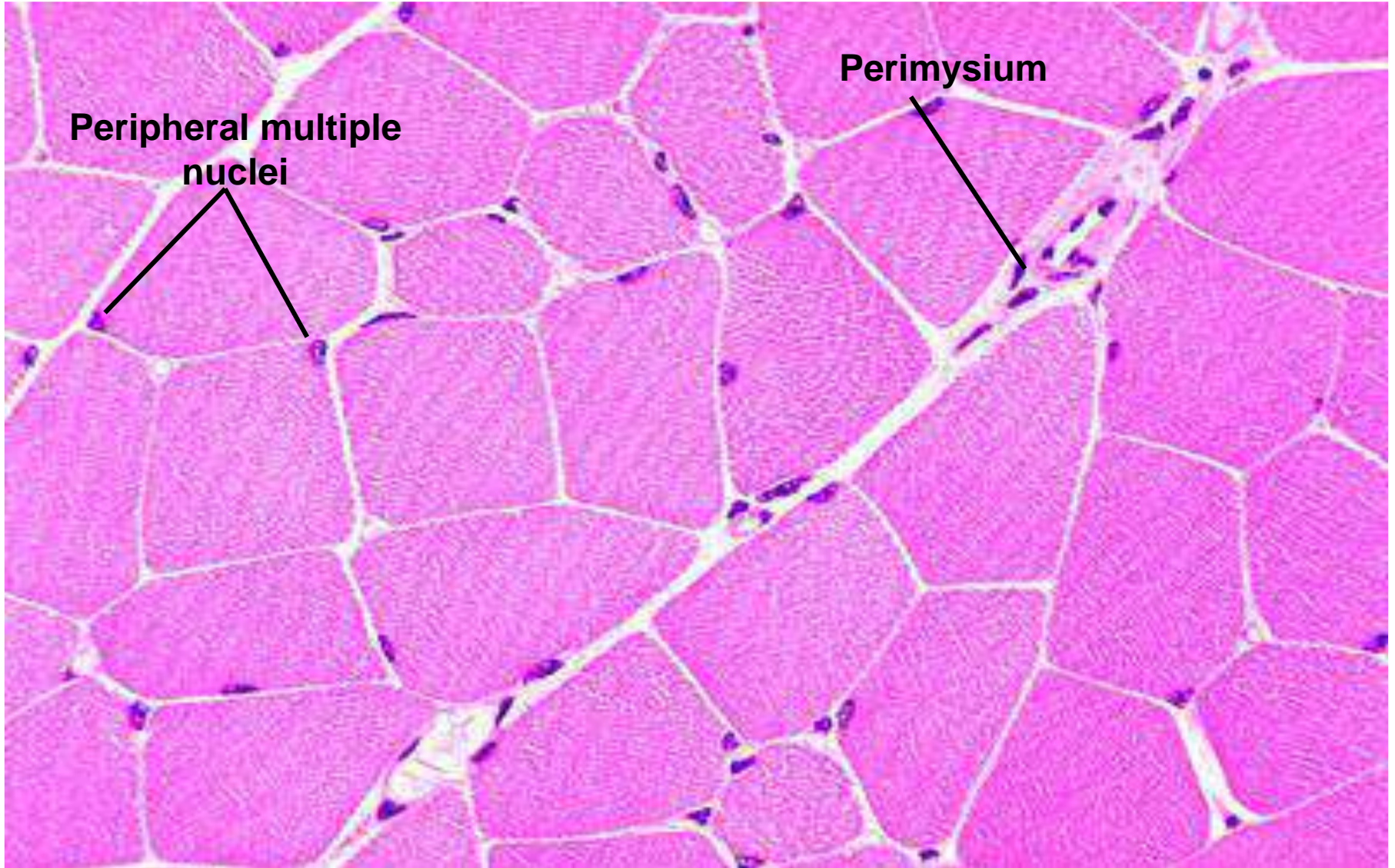
- Epimysium



L.S skeletal muscle

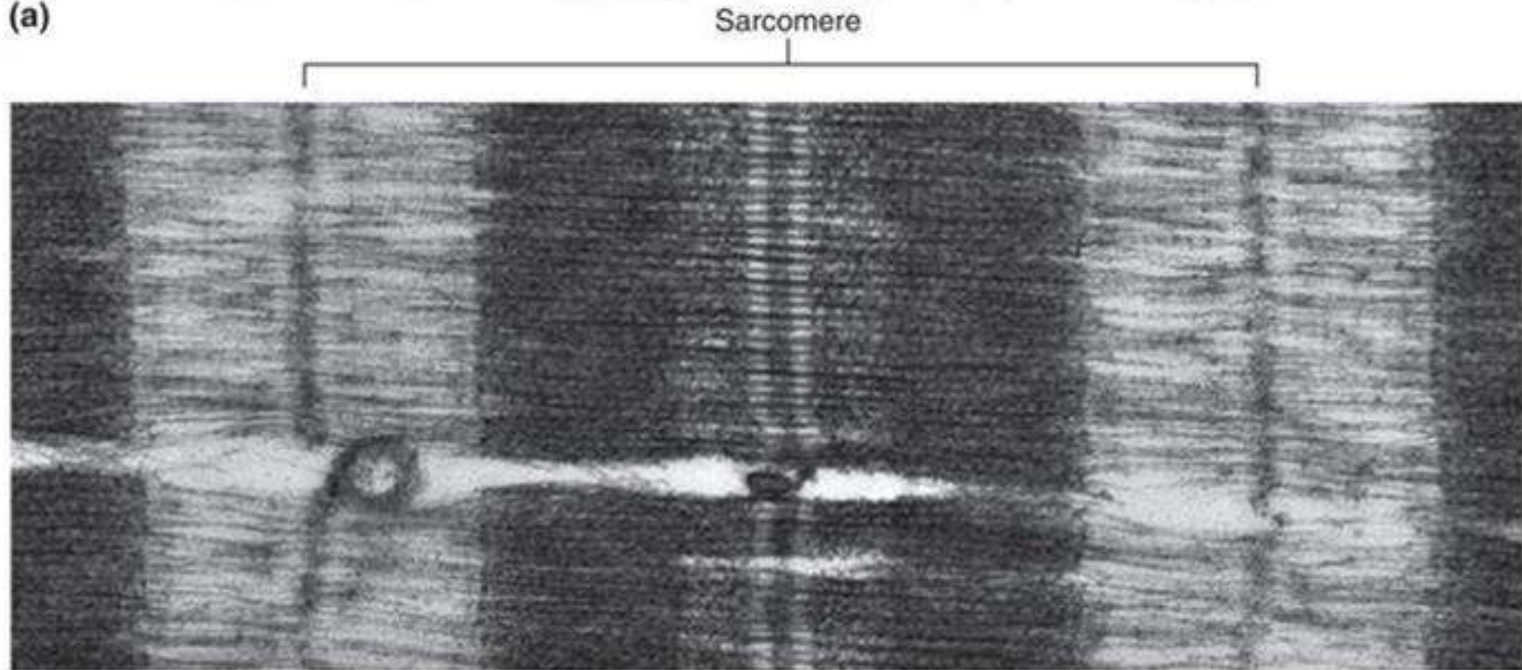


TS skeletal muscle



EM of L.S skeletal muscle

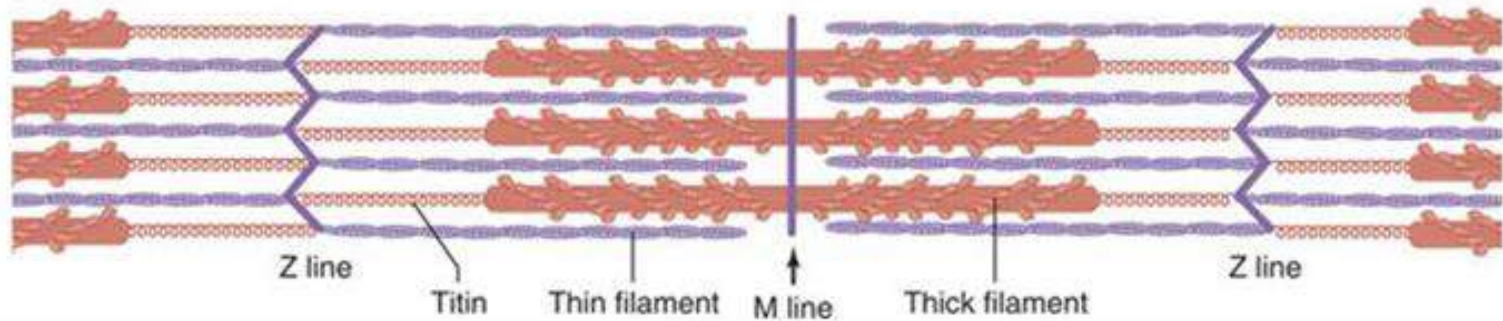
(a)



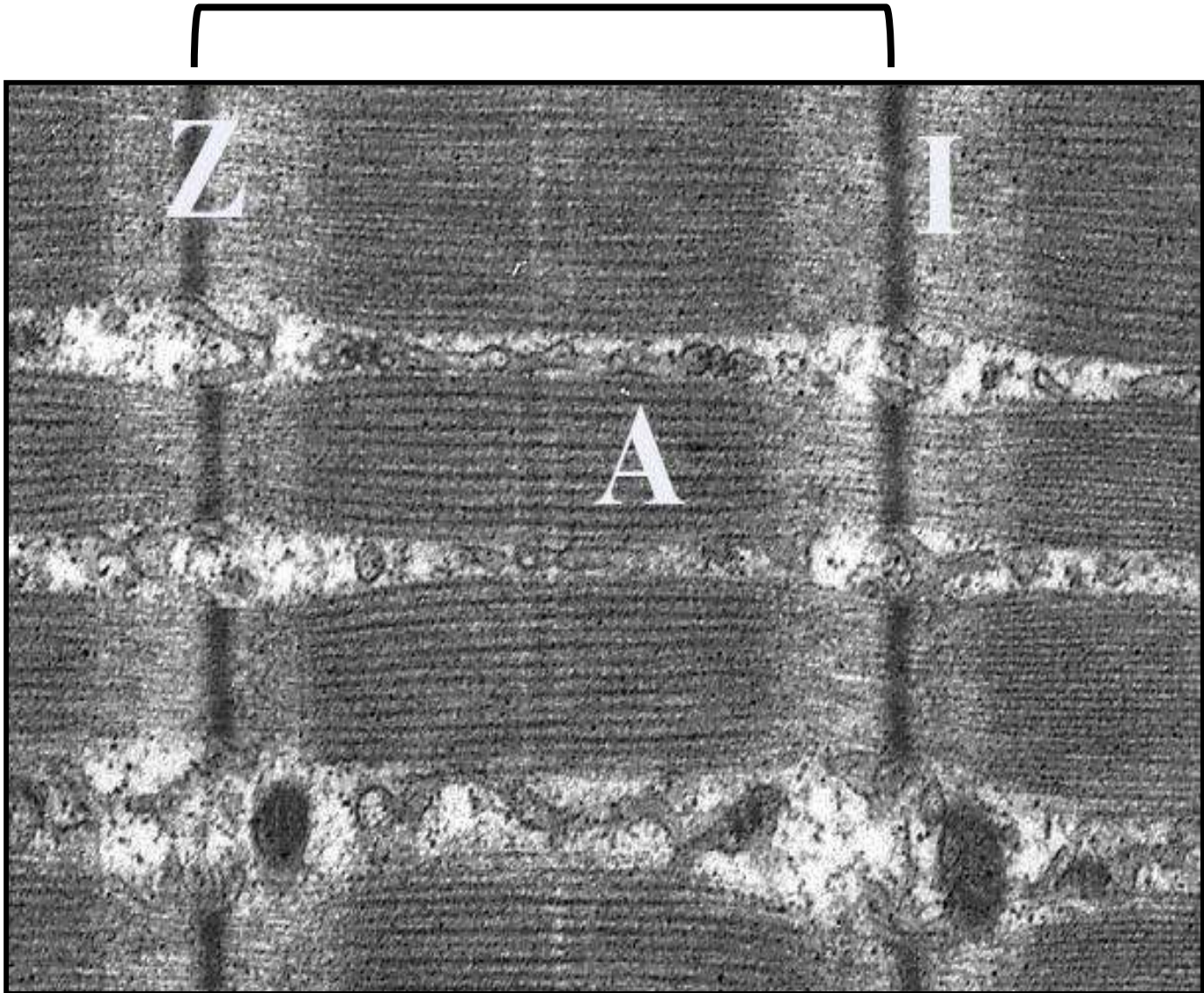
I band

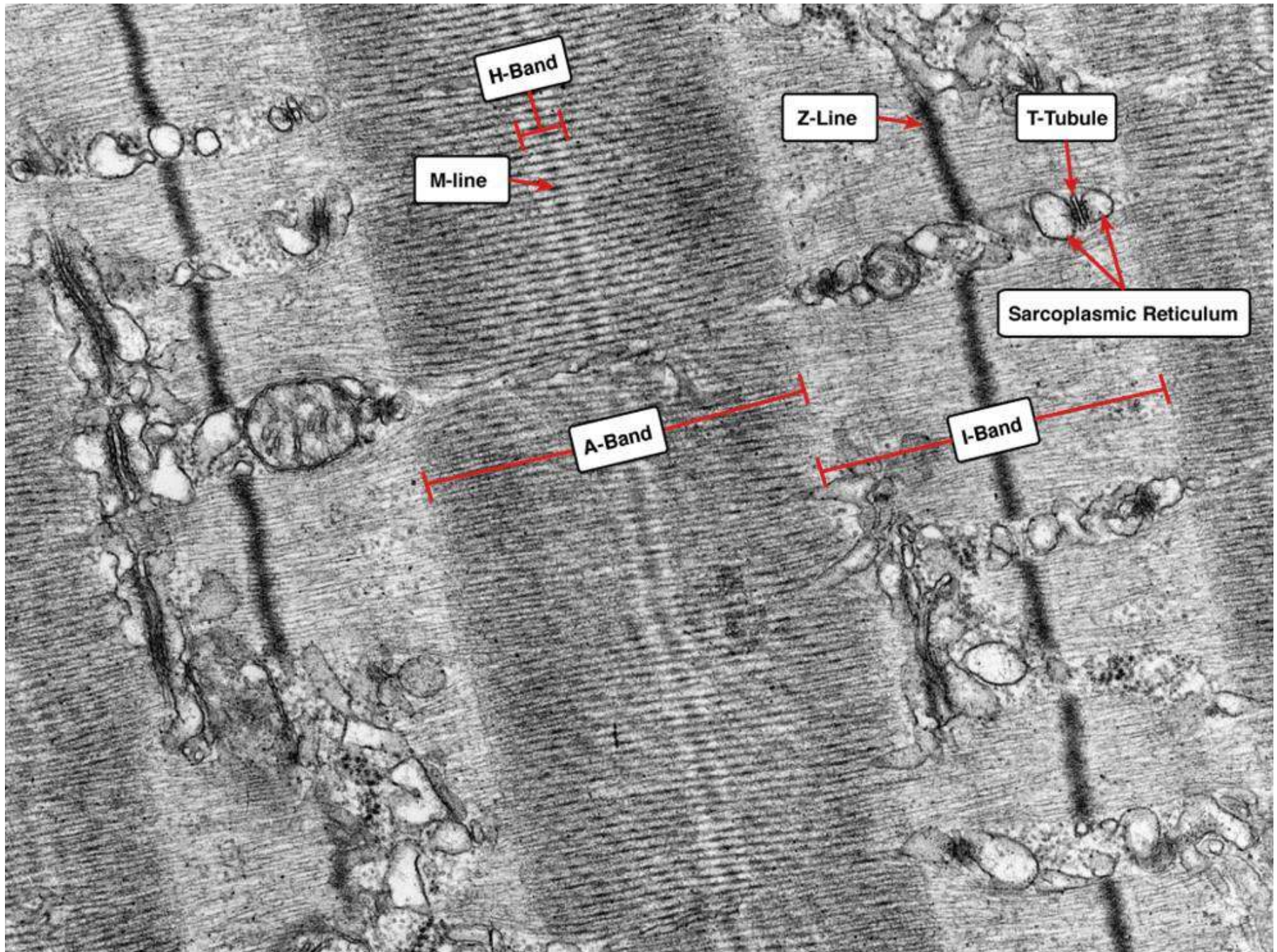
A band

(b)

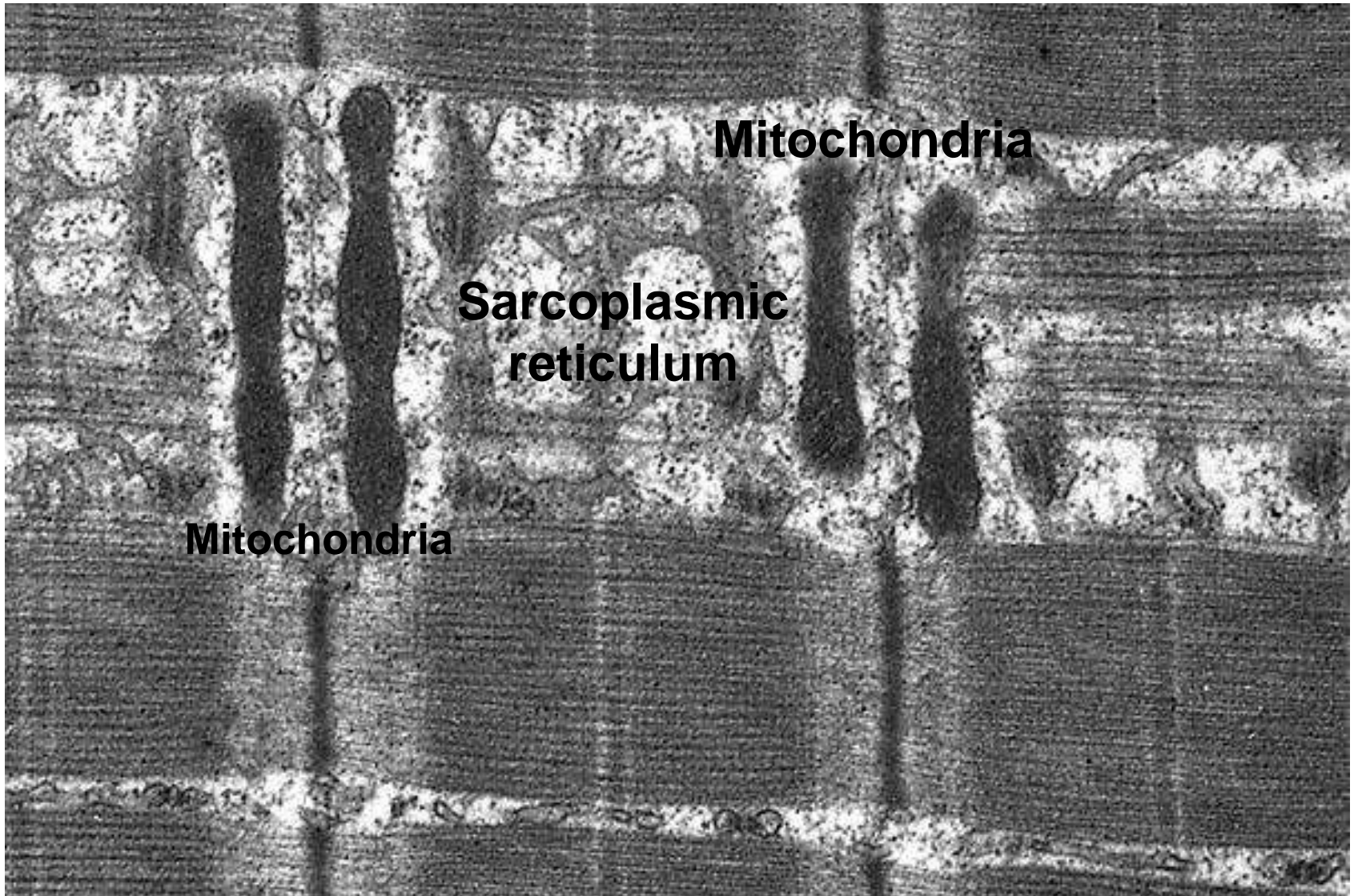


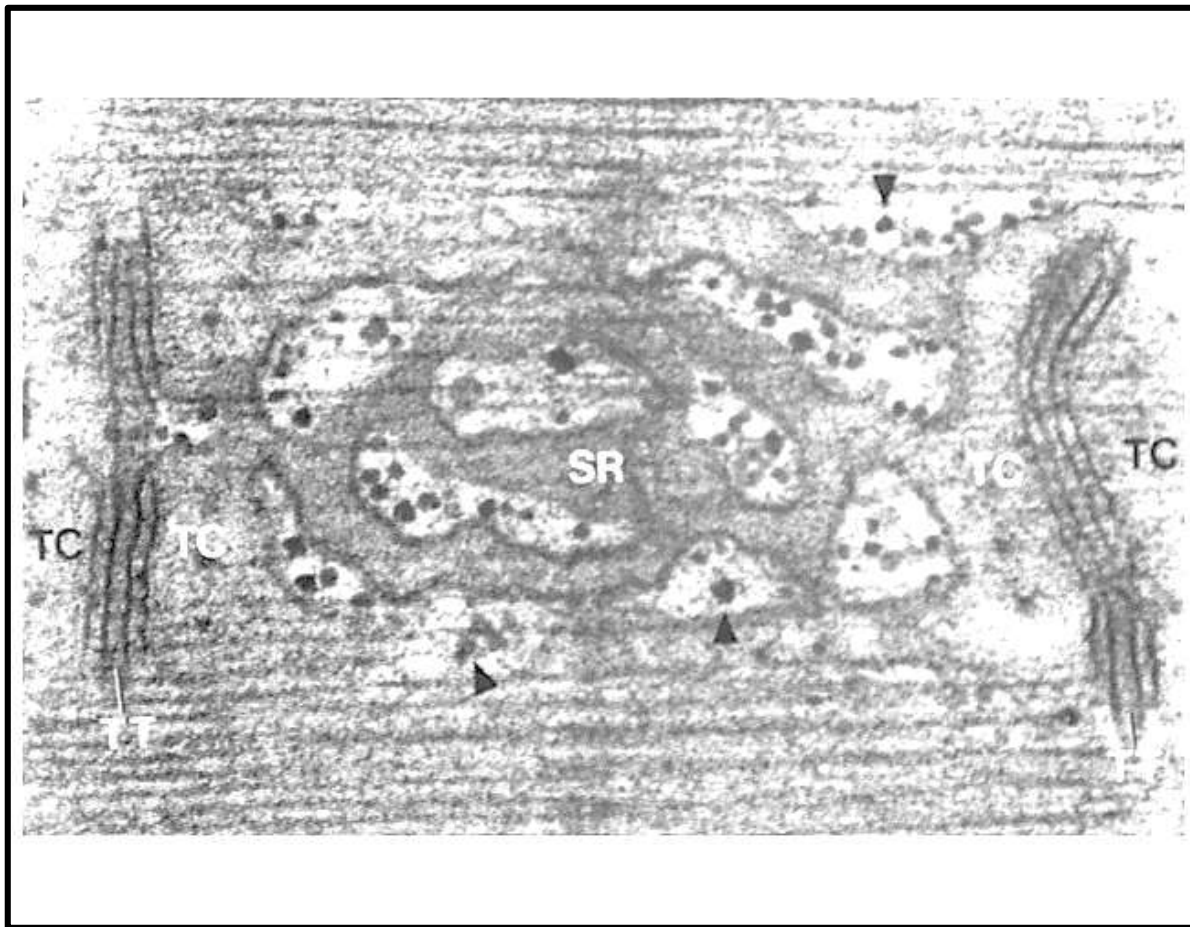
LS skeletal ms showing sarcomere





EM of L.S skeletal muscle





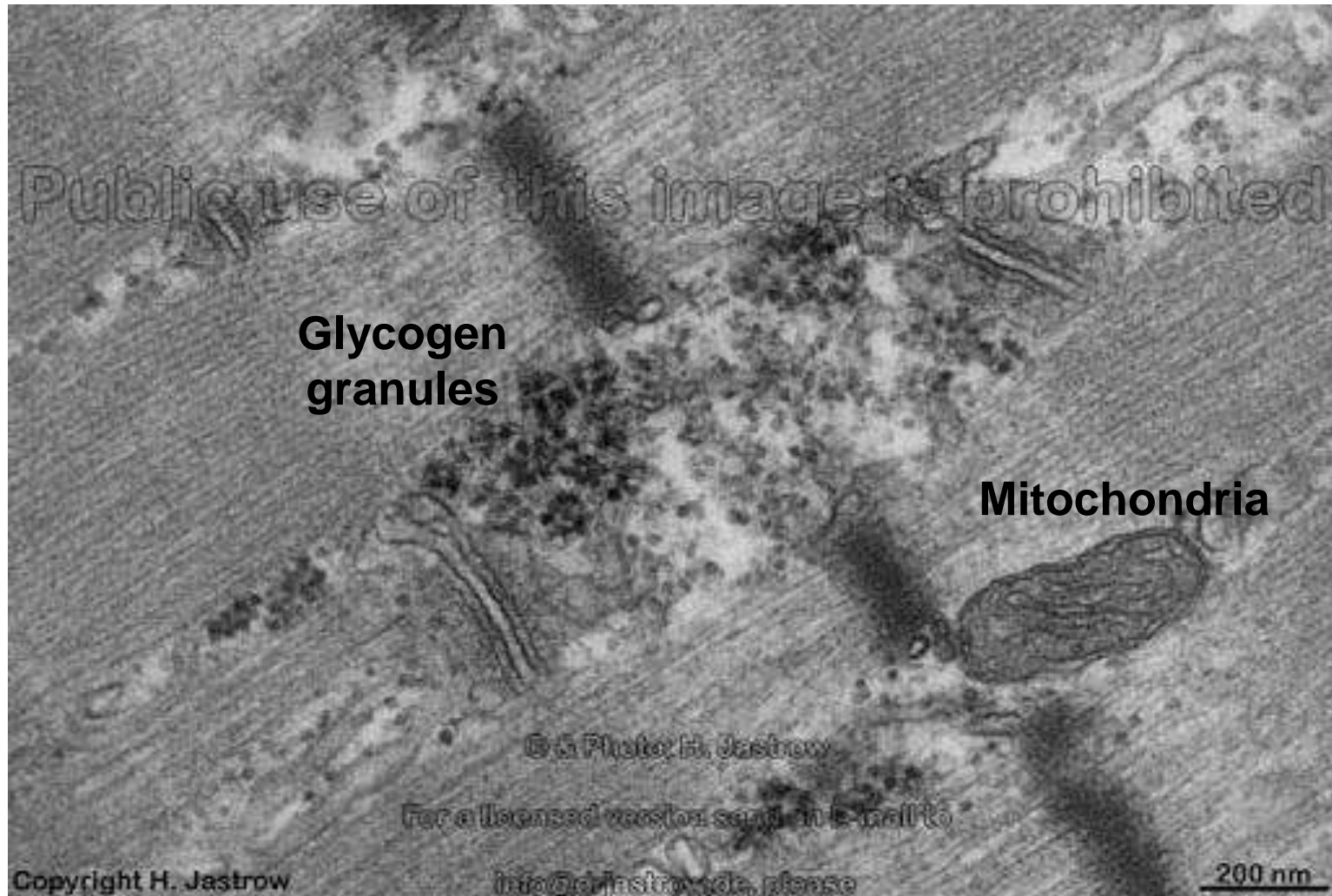
SR= sarcoplasmic reticulum

TT= T-tubule

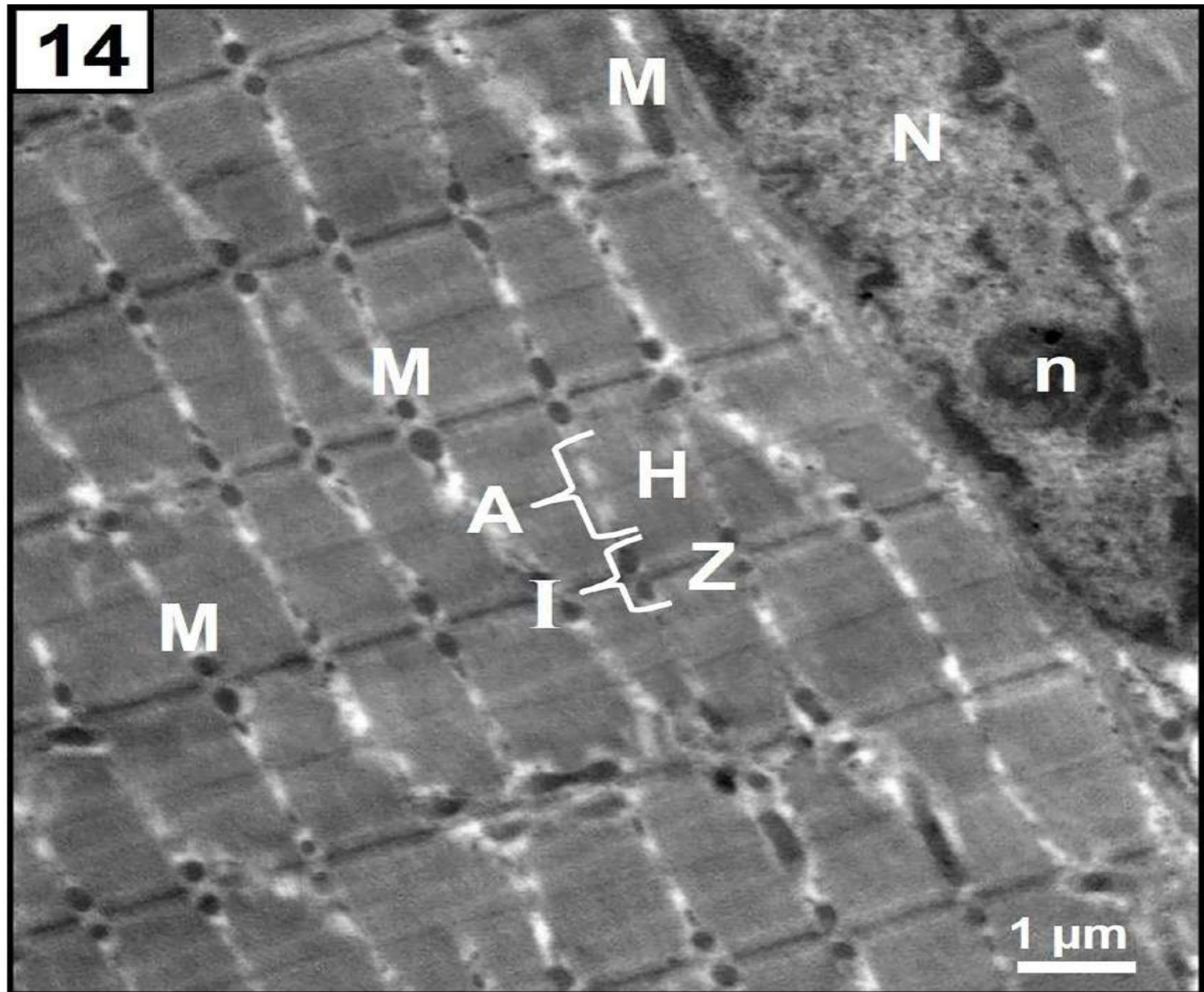
TC= terminal cisternae

arrow head =calcium ions

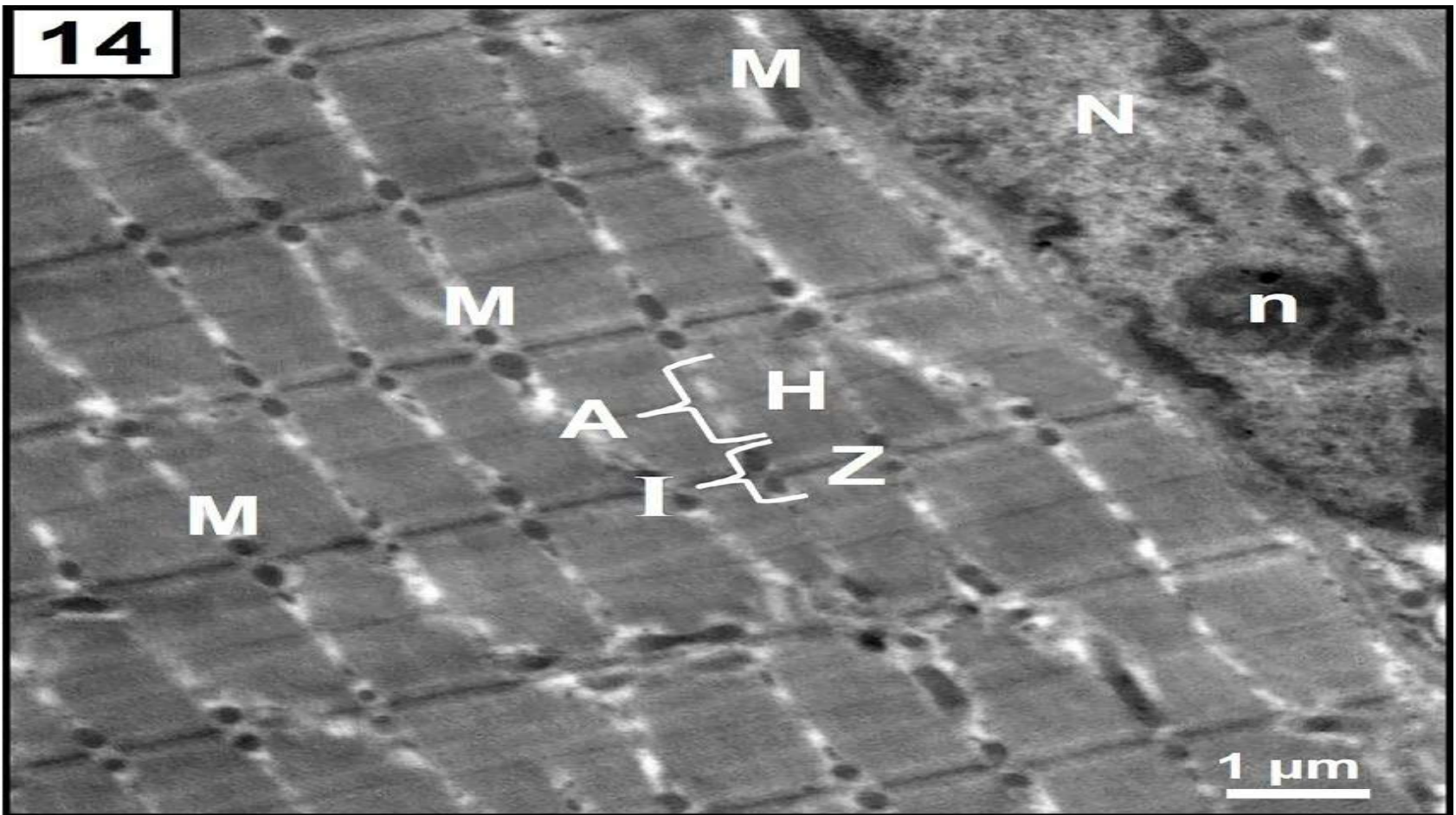
EM of L.S skeletal muscle



14

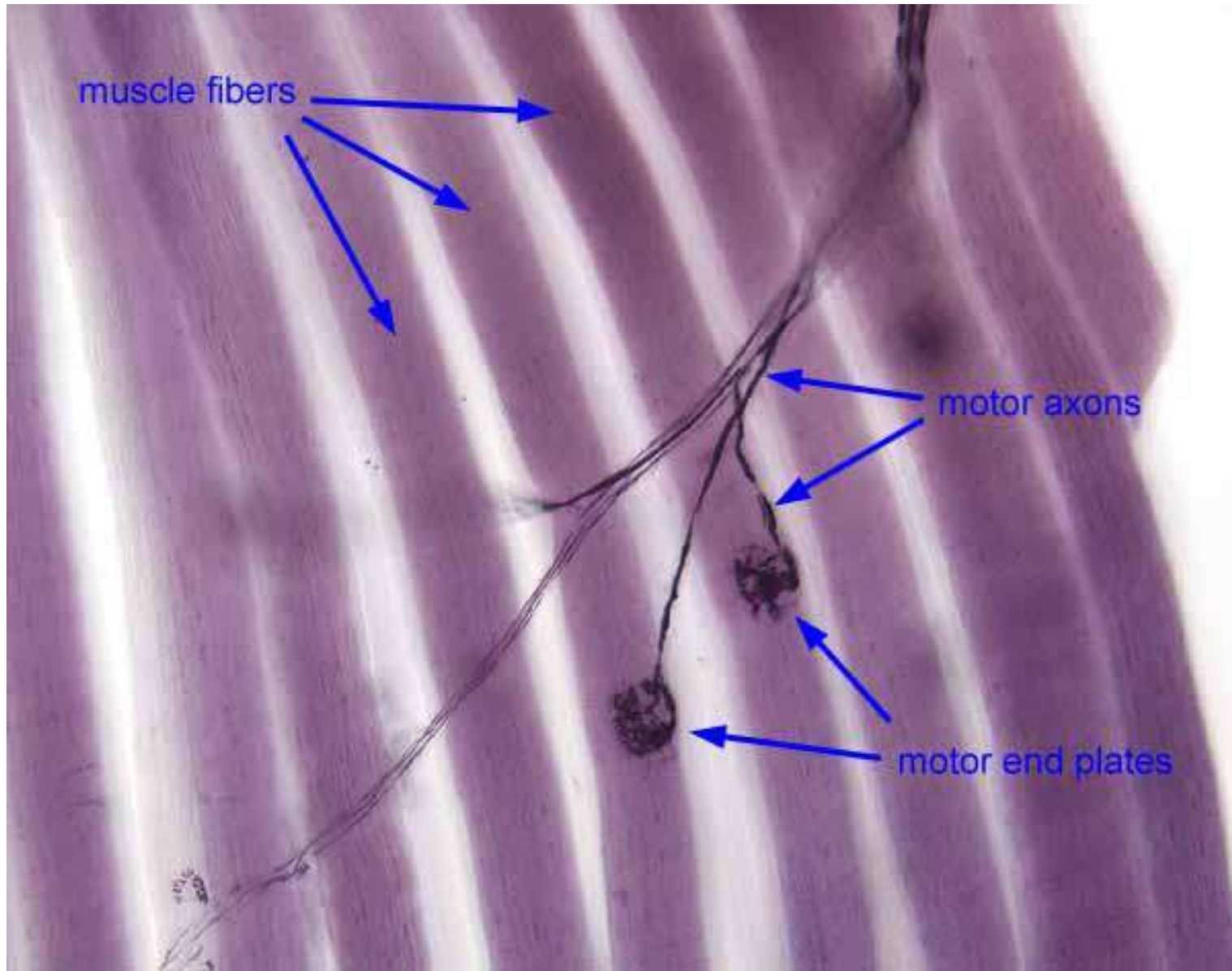


14



- N=nucleus
- M= mitochondria
- n=nucleolus

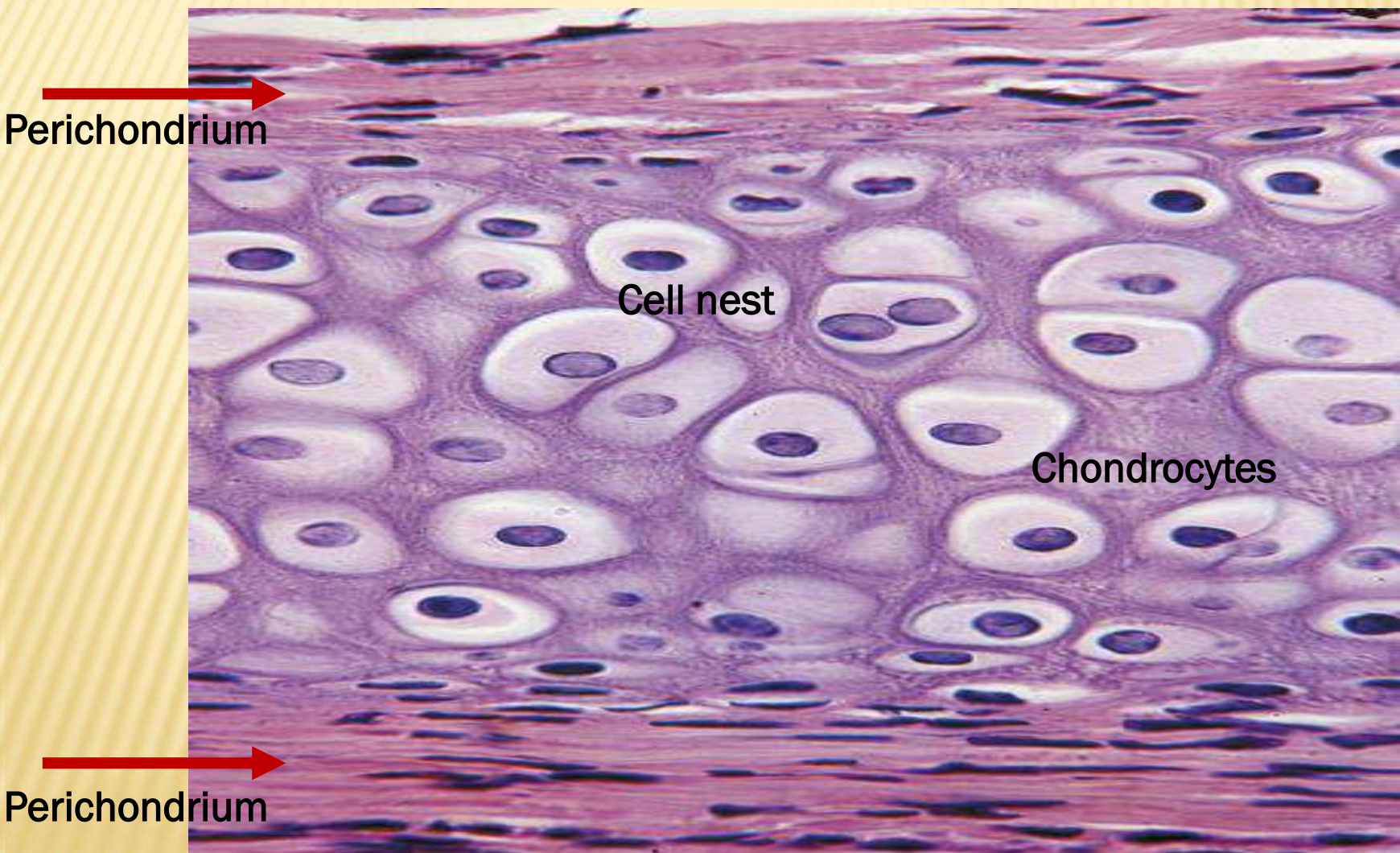
Motor end plate



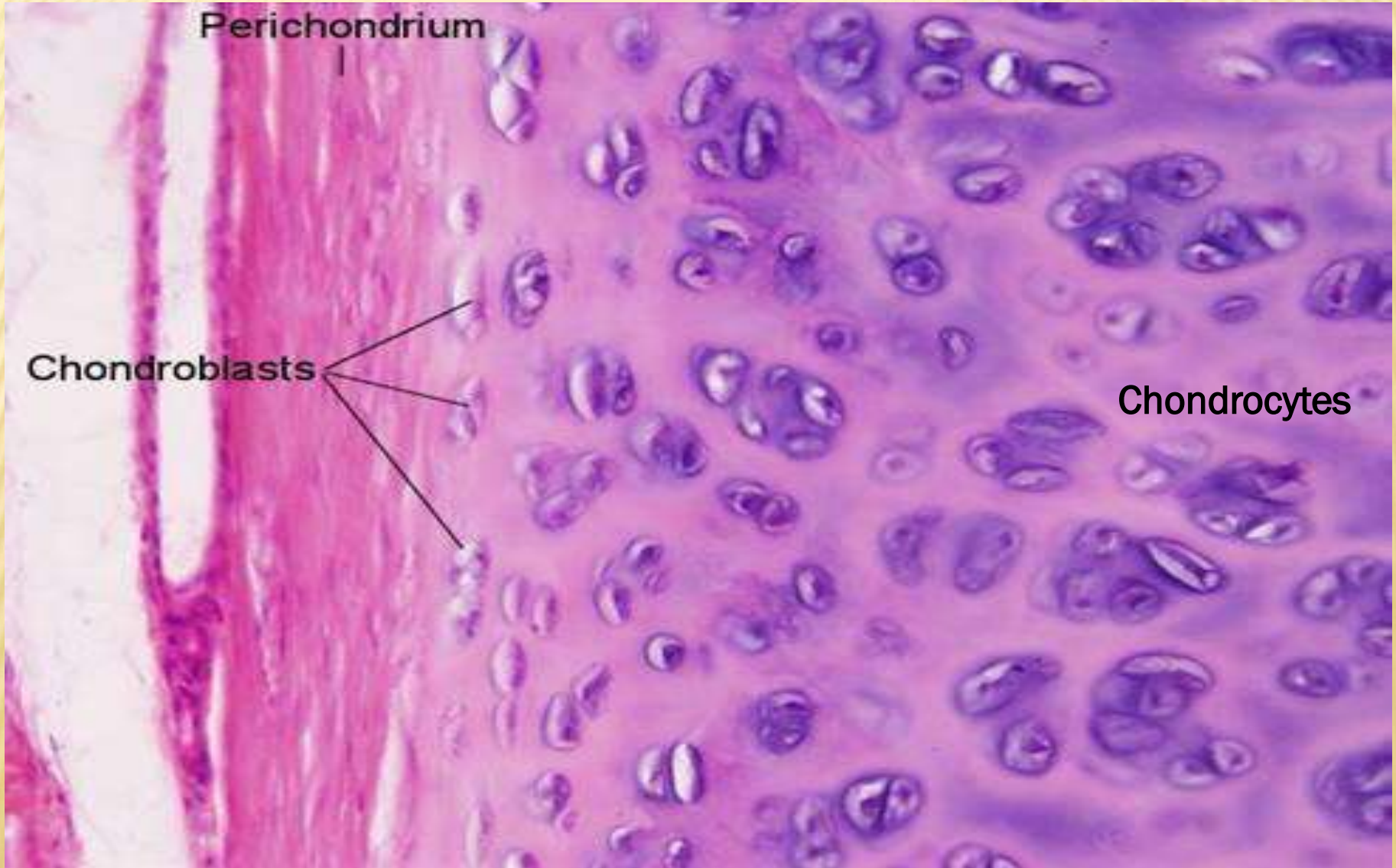
CARTILAGE

CARTILAGE

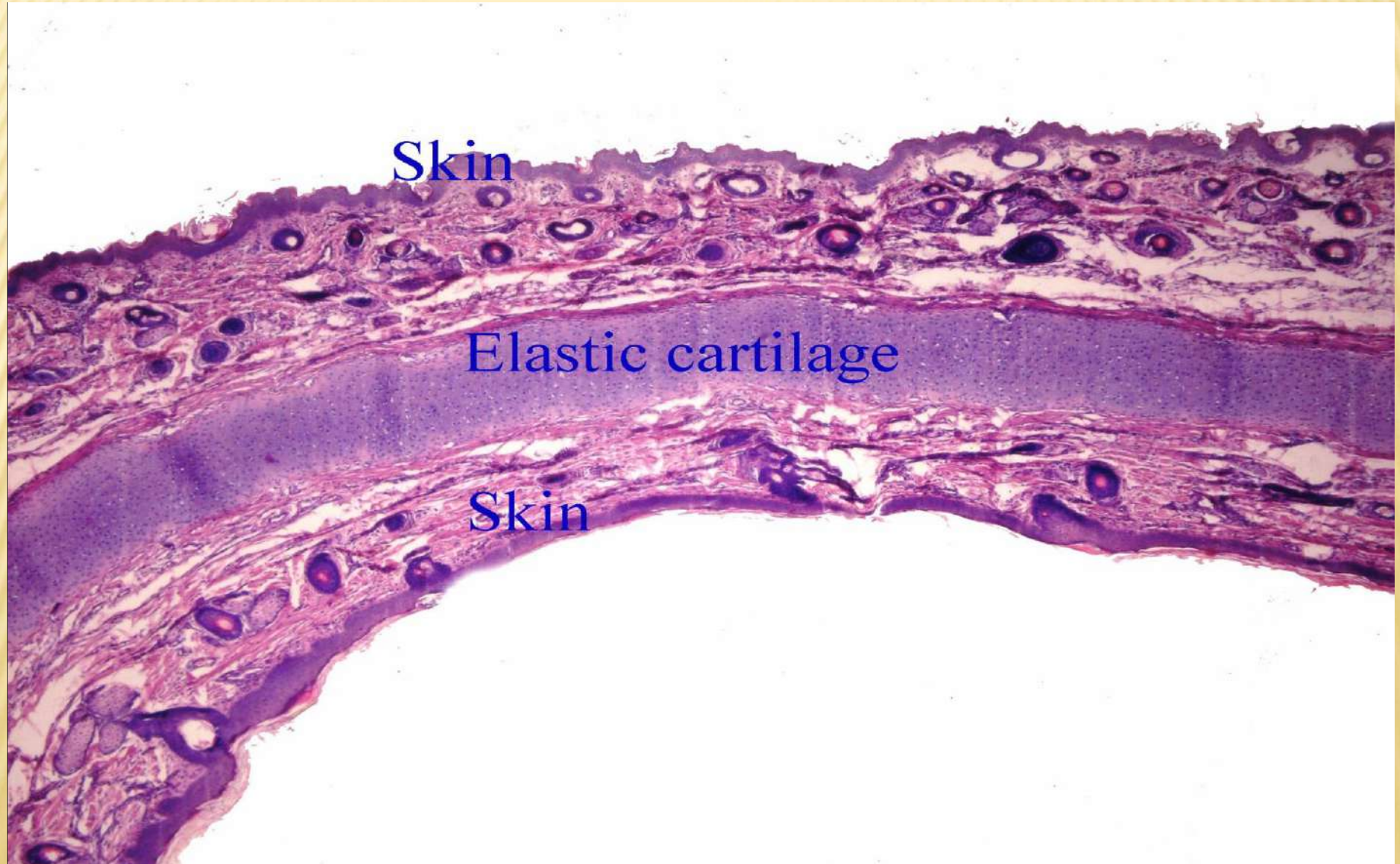
HYALINE CARTILAGE



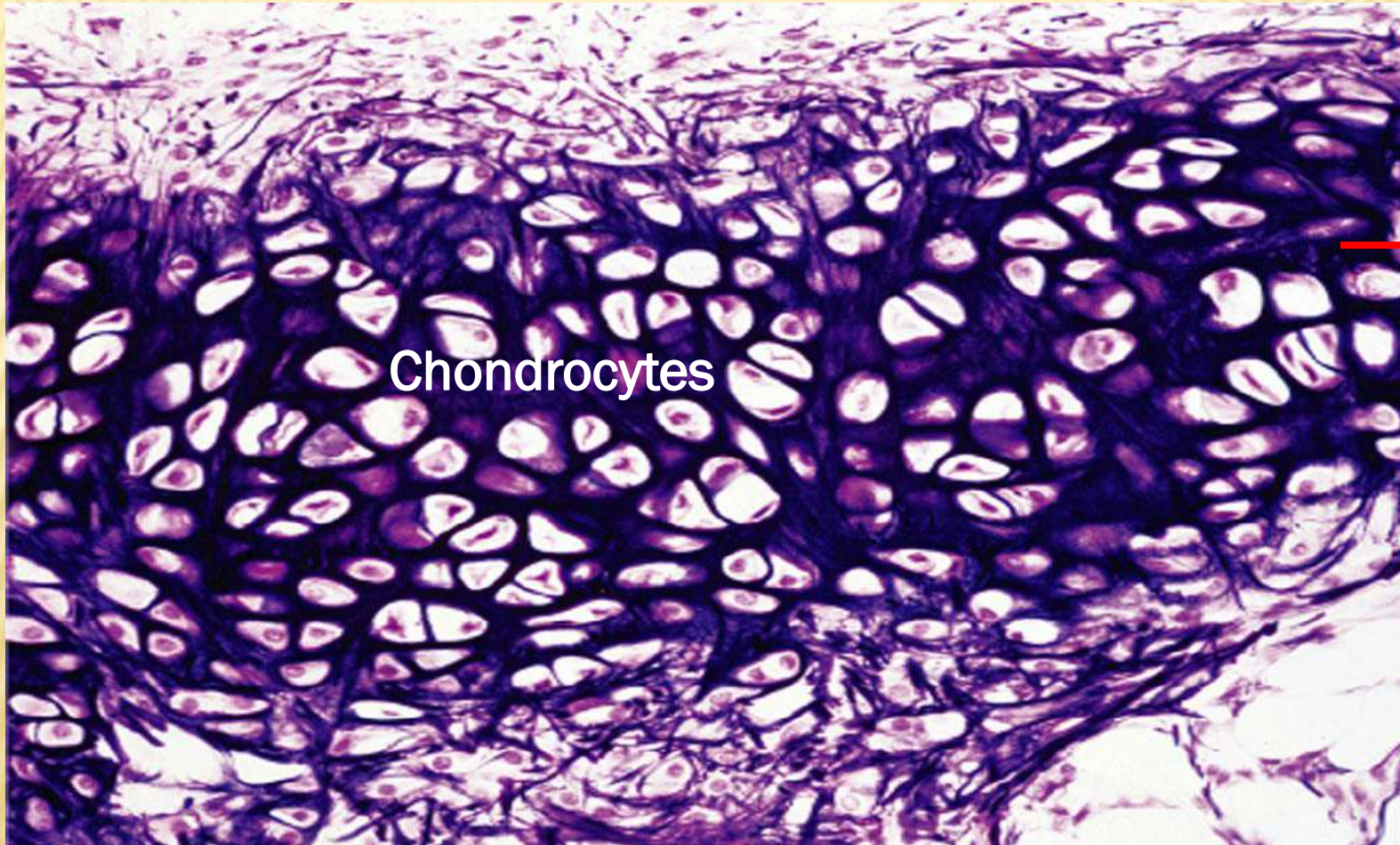
HYALINE CARTILAGE



ELASTIC CARTILAGE



ELASTIC CARTILAGE (VERHOEFF VAN GIESON)



Chondrocytes

Elastic
fibers
stained
black

FIBROCARILAGE

