



ANESTHESIA ARCHIVE



DONE BY:

DANIAH AWWAD



Q1: WHAT IS THE REQUIRED FASTING DURATION BEFORE THE LAST ORAL INTAKE?

- A. 2 HOURS
- B. 4 HS
- C. 6HS
- D. 8HS

ANS:A

Q2: Q2: A PERSON HAS A HEIGHT OF 200 CM AND A WEIGHT OF 100 KG. WHAT IS THEIR BODY MASS INDEX (BMI)?

- A. 20
- B. 25
- C. 30
- D. 35
- E. 40

ANS:B

Q3: WHICH OF THE FOLLOWING STATEMENTS ABOUT THE ADULT AIRWAY IS FALSE?

- A. IT EXTENDS FROM C3 TO C6.
- B. THE TRACHEA HAS 15-20 C-SHAPED CARTILAGES.
- C. THE SUPERIOR LARYNGEAL NERVE SUPPLIES THE CRICOTHYROID MUSCLE.
- D. THE SUPERIOR VOCAL CORDS ARE KNOWN AS TRUE VOCAL CORDS AND SERVE A PROTECTIVE FUNCTION.

ANS:D

Q4: CARINA END AT LEVEL OF:

- A. C4
- B. C7
- C. T2
- D. T4
- E. T12

ANS:D

Q5: INACCURACY IN FLOWMETER MAY OCCUR DUE TO ALL EXCEPT:

- A. FLOAT STICK TO TUBE
- B. ELECTRICAL ACTIVITY
- C. TUBE NOT VERTICAL
- D. BACK PRESSURE
- E. STATIC CHEMICALLY

ANS:E

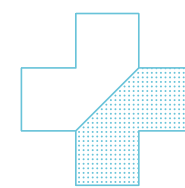
Q6: WHICH OF THE FOLLOWING IS NOT AN EFFECT OF THE MU RECEPTOR?

- A.SUPRASPINAL ANALGESIA
- B.DEPENDENCE
- C.CONSTIPATION
- D.SEDATION
- E.RESPIRATORY DEPRESSION

ANS:D

Q7: WHICH OF THE FOLLOWING IS NOT AN EFFECT OF MORPHINE?

- A.EDINGER-WESTPHAL NUCLEUS ACTIVATION
- B.BRADYCARDIA
- C.DECREASED TIDAL VOLUME
- D.INCREASED GASTRIC EMPTYING



ANS:D

Q8: WHICH OF THE FOLLOWING STATEMENTS ABOUT OPIOIDS IS NOT TRUE?

- A.THEY CAN CAUSE RESPIRATORY DEPRESSION.
- B.THEY CAN CAUSE HISTAMINE RELEASE.
- C.NALOXONE IS AN ANTIDOTE FOR PRURITUS CAUSED BY OPIOIDS.
- D.THEY DECREASE ANTIDIURETIC HORMONE (ADH) LEVELS.

ANS:D

Q9:WHAT IS THE APPROXIMATE CONCENTRATION OF OXYGEN DELIVERED BY A NASAL CANNULA?

- A.0.35%
- B.0.45%
- C.0.50%
- D.0.90%

ANS:B

Q10. WHICH OF THE FOLLOWING IS NOT A RECOGNIZED TYPE OF SHOCK?

- A.DISTRIBUTIVE
- B.HYPOVOLEMIC
- C.OBSTRUCTIVE
- D.CARDIOGENIC
- E.NEUROGENIC

ANS:E

Q11: WHICH OF THE FOLLOWING STATEMENTS ABOUT NEUROGENIC SHOCK IS FALSE?

- A.WARM SKIN
- B.INCREASED SYSTEMIC VASCULAR RESISTANCE (SVR)
- C.BRADYCARDIA
- D.NORMAL URINE OUTPUT
- E.PERIPHERAL VASODILATION

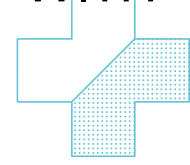
ANS:B

Q12: WHICH OF THE FOLLOWING RHYTHMS IS COMMONLY ASSOCIATED WITH THE NEED FOR IMMEDIATE CPR?

- A. ATRIAL FIBRILLATION
- B. VENTRICULAR FIBRILLATION
- C. NORMAL SINUS RHYTHM
- D. BRADYCARDIA
- E. TACHYCARDIA

ANS: B

Q13: WHAT IS A POTENTIAL COMPLICATION ASSOCIATED WITH POST-DURAL PUNCTURE HEMATOMA?



- A. CEREBRAL EDEMA
- B. MYOCARDIAL INFARCTION
- C. PULMONARY EMBOLISM
- D. DEEP VEIN THROMBOSIS
- E. ACUTE KIDNEY INJURY

ANS: A

Q14: A 65-YEAR-OLD PATIENT WITH A HISTORY OF HEART FAILURE IS BEING TREATED FOR HYPONATREMIA. THE MEDICAL TEAM AIMS TO MAINTAIN SERUM SODIUM LEVELS AT 80 MG/DL. WHICH OF THE FOLLOWING SODIUM LEVELS IS CONSIDERED ACCEPTABLE FOR MAINTAINING THIS TARGET?

- A. 80 MG/DL
- B. 120 MG/DL
- C. 180 MG/DL
- D. 240 MG/DL

ANS: D

Q15: NORMAL SALINE OSMOLARITY:

- A. 154 MOSM/L
- B. 280 MOSM/L
- C. 285 MOSM/L
- D. 295 MOSM/L
- E. 308 MOSM/L

ANS: E

Q16: V1 & V2 SEEN IN:

- A. POSTERIOR
- B. INFERIOR
- C. SEPTAL
- D. LATERAL
- E. ANTERIOR

ANS: C

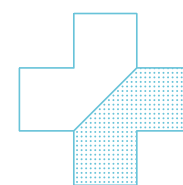
Q17: NOT ONE OF PRIMARY SURVEY IN AIRWAY:

- A. REMOVE FOREIGN BODY
- B. AIRWAY SUCTION
- C. CERVICAL SPINE IMMOBILIZATION
- D. HEAD TILT CHEN LEFT
- E. ADJUVANT AIRWAY

ANS:C

Q18: ONE OF THE FOLLOWING NOT IN CIRCULATORY PRIMARY SURVEY:

- A. BLOOD SAMPLE
- B. IV FLUID
- C. GLASGOW COMA SCALE
- D. ABGS
- E. VITAL SIGN (HR, BP)



ANS:C

Q19: ROCURONIUM IS CHARACTERIZED FROM OTHER MUSCLE RELAXANTS BY :

- A. RAPID ONSET
- B. SHORT DURATION
- C. NO NEED FOR REVERSAL
- D. METABOLIZED BY PSEUDOCHOLINESTERASE

ANS:A

Q20: STEROIDAL MUSCLE RELAXANT :

- A. MIVACURIUM
- B. ATRACURIUM
- C. ROCURONIUM
- D. CISATRCURIUM
- E. DOXACURIUM

ANS:C

Q21: REGARDING SUXAMETHONIUM ONE IS CORRECT:

- A. INTRAOCULAR PRESSURE IS INCREASED
- B. PROLONGED ACTION IN 10% OF THE POPULATION
- C. PHASE II BLOCK MORE COMMON IN NEONATES
- D. CAUSE HYPOKALEMIA

ANS:A

Q22: WHAT IS THE MAIN RISK ASSOCIATED WITH THE PROLONGED ADMINISTRATION OF PROPOFOL IN ICU PATIENTS?

- A. RESPIRATORY DEPRESSION
- B. ACIDOSIS
- C. HYPOTENSION
- D. CARDIAC ARRHYTHMIAS
- E. SEPSIS

ANS:B

Q22:WHAT IS THE MAIN RISK ASSOCIATED WITH THE PROLONGED ADMINISTRATION OF PROPOFOL IN ICU PATIENTS?

- A.RESPIRATORY DEPRESSION
- B.ACIDOSIS
- C.HYPOTENSION
- D.CARDIAC ARRHYTHMIAS
- E.SEPSIS

ANS:B

Q23:WHICH OF THE FOLLOWING DRUGS WORKS BY BLOCKING NMDA RECEPTORS?

- A.KETAMINE
- B.PROPOFOL
- C.BENZODIAZEPINES
- D.ETOMIDATE



ANS:A

Q24:PAEDIATRIC ENDOTRACHEAL :

- A. [AGE / 4] + 4
- B. [AGE / 2] + 4
- C. [AGE / 4] + 12
- D. [AGE / 2] + 2
- E. [AGE / 4] + 2

ANS:A

Q25:DEFINITION OF HYPOXEMIA:

- A.LOW OXYGEN LEVEL IN BLOOD
- B.HIGH OXYGEN LEVEL IN BLOOD
- C.LOW OXYGEN LEVEL IN TISSUE
- D.LOW O₂ LEVEL IN TISSUE AND BLOOD
- E.HIGH O₂ LEVEL IN TISSUE

ANS:A

Q26:18- A CIGARETTE VENDOR WAS BROUGHT TO THE EMERGENCY DEPARTMENT OF A HOSPITAL AFTER SHE FELL INTO THE GROUND AND HURT HER LEFT LEG. SHE IS NOTED TO BE TACHYCARDIC AND TACHYPNEIC. PAINKILLERS WERE CARRIED OUT TO LESSEN HER PAIN. SUDDENLY, SHE STARTED COMPLAINING THAT SHE IS STILL IN PAIN AND NOW EXPERIENCING MUSCLE CRAMPS, TINGLING, AND PARAESTHESIA. MEASUREMENT OF ARTERIAL BLOOD GAS REVEALS PH 7.6, PAO₂ 120 MM HG, PACO₂ 31 MM HG, AND HCO₃ 25 MMOL/L. WHAT DOES THIS MEAN? SELECT ONE:

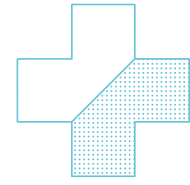
- A.RESPIRATORY ALKALOSIS, UNCOMPENSATED
- B.RESPIRATORY ACIDOSIS, PARTIALLY COMPENSATED
- C.METABOLIC ALKALOSIS, UNCOMPENSATED
- D.METABOLIC ALKALOSIS, PARTIALLY COMPENSATED
- E.RESPIRATORY ALKALOSIS, COMPENSATED

ANS:A

Q27: ALL OF THE FOLLOWING ARE INDICATIONS OF CENTRAL VENOUS CATHETER EXCEPT :
A. BLOOD SAMPLING
B. ABGS MEASURE
C. MEDICATION
D. FLUID ADMINISTRATION
E. FOR CENTRAL VENOUS PRESSURE.

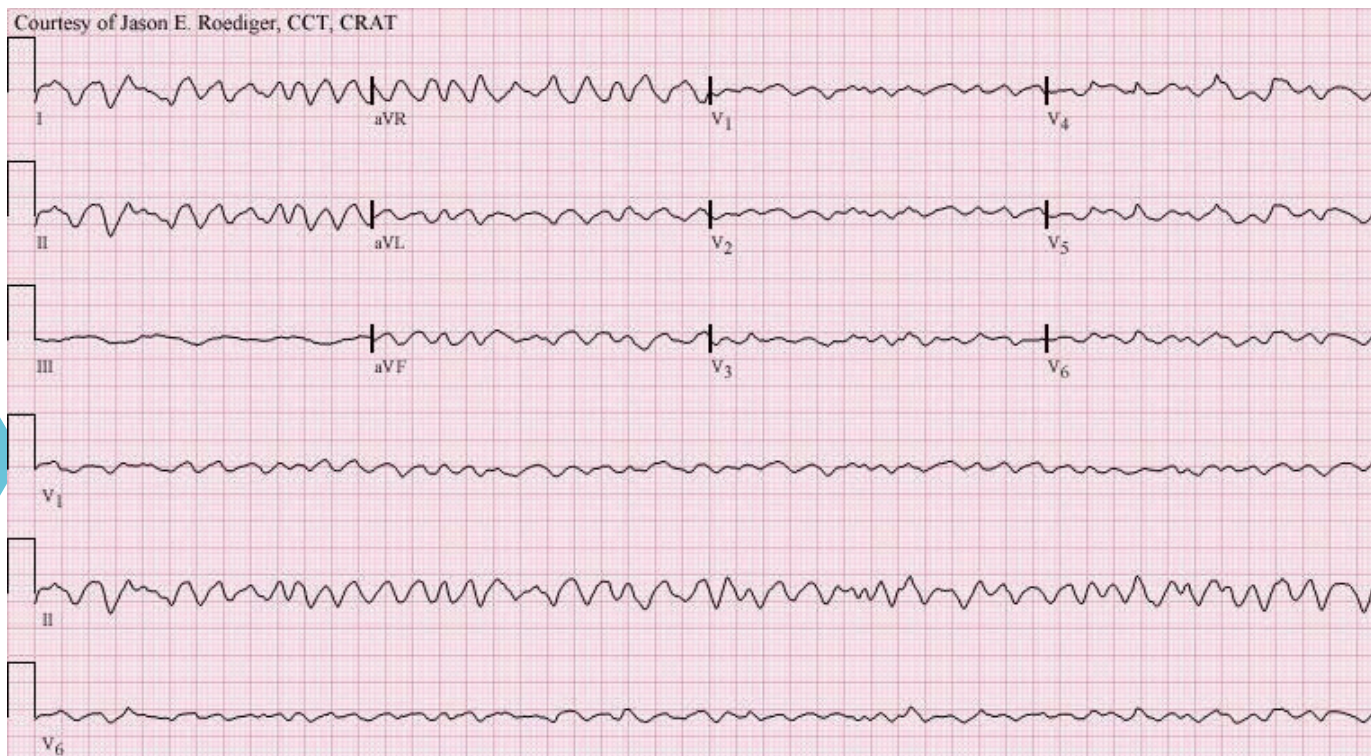
ANS: B

Q28: CAPNOMETRY LEAST EFFECTIVE IN :
A. ENDOBRONCHIAL INTUBATION
B. ESOPHAGEAL INTUBATION
C. COMPLETED OBSTRUCTION
D. MALIGNANT HYPERTHERMIA



ANS: C

WHAT IS THE DIFFERENTIAL DIAGNOSIS?



VENTRICULAR FIBRILLATION

WHAT IS THE DIFFERENTIAL DIAGNOSIS?

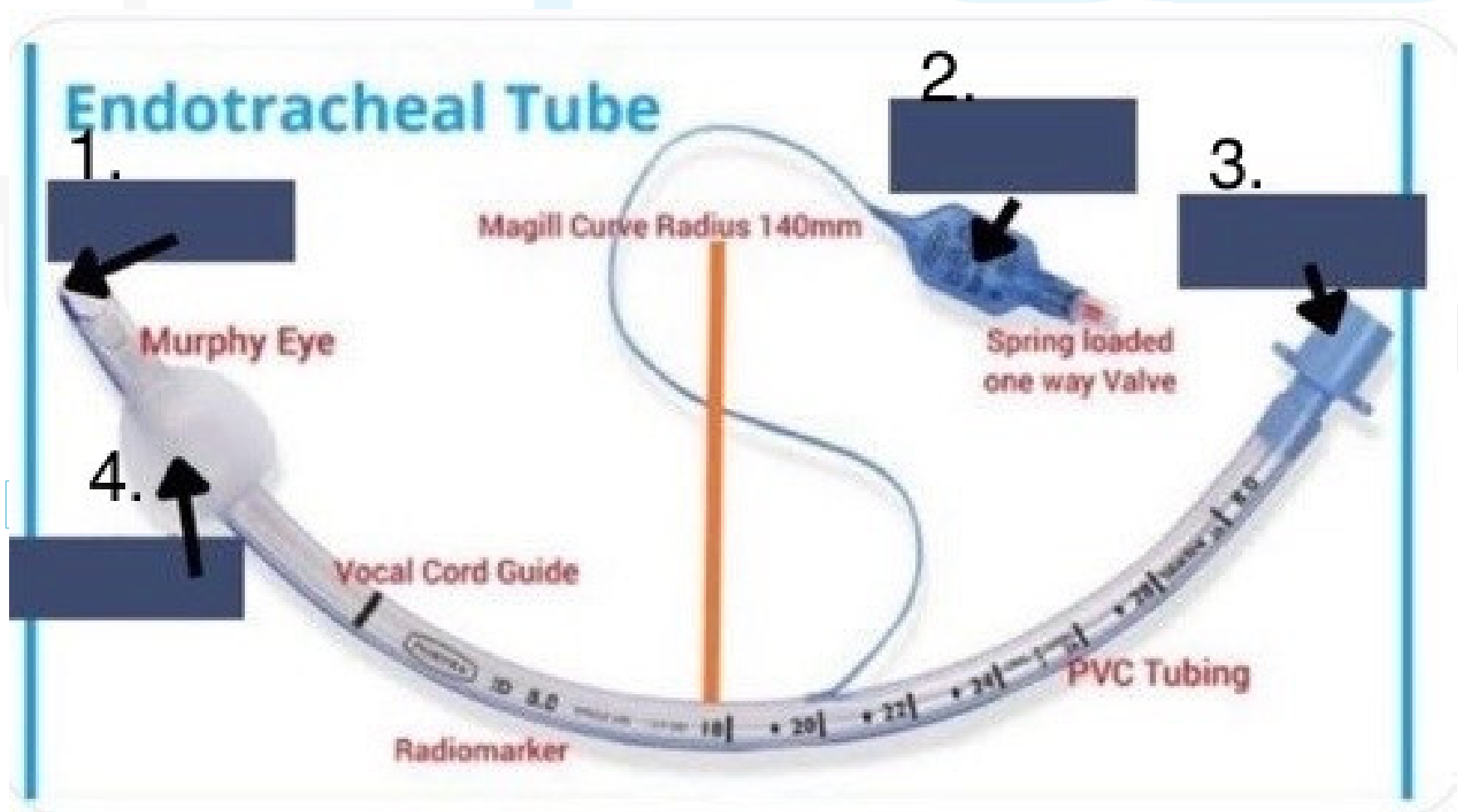


ATRIAL FIBRILLATION

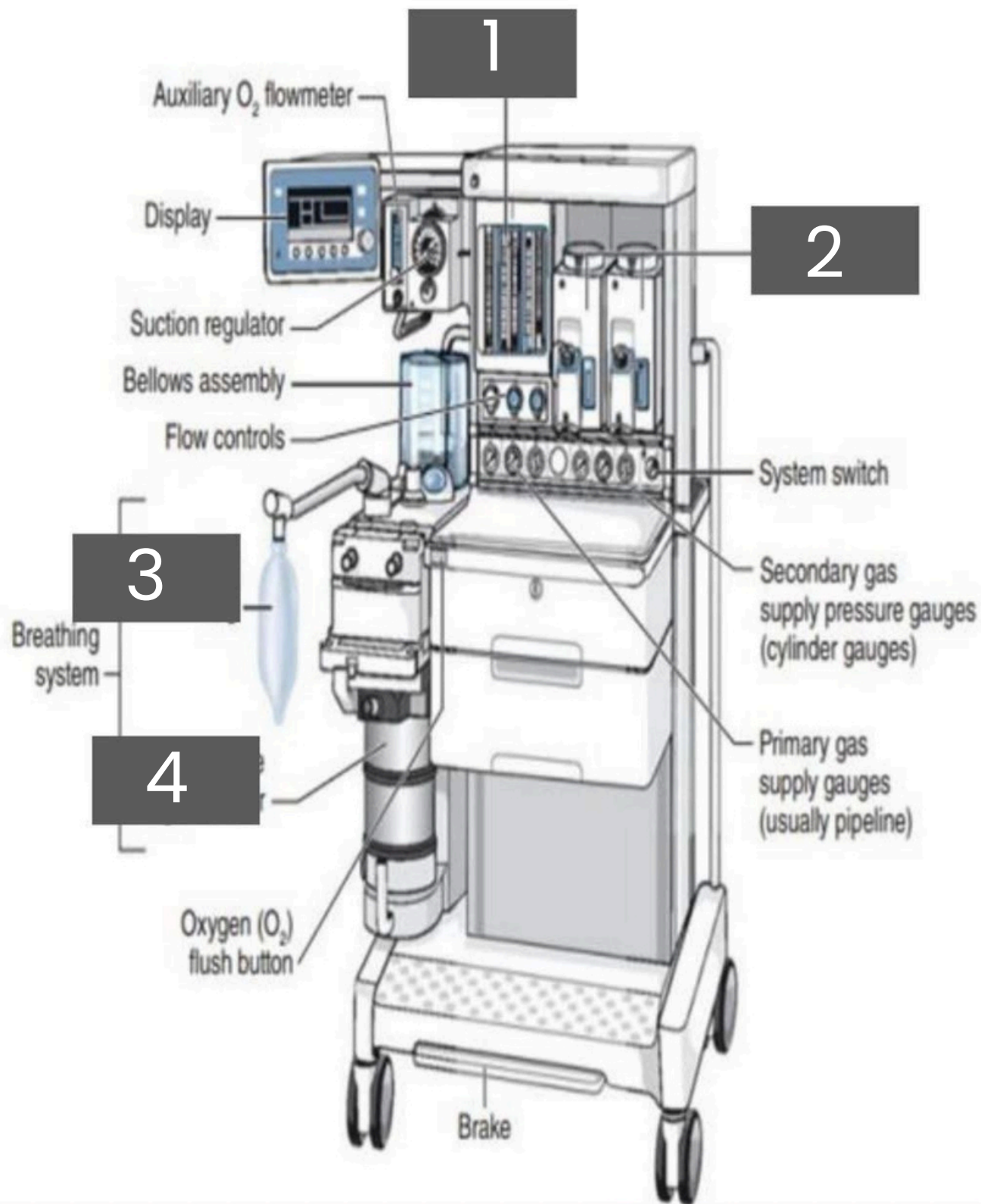
WRITE DOWN PARTS OF ::

Gas	E-Cylinder Capacity ¹ (L)	H-Cylinder Capacity ¹ (L)	Pressure ¹ (psig at 20 °C)	Color (USA)	Color (international)	Form
O ₂	625-700	6000-8000	1800-2200	Green	1	Gas
Air	625-700	6000-8000	1800-2200	Yellow	2	Gas
N ₂ O	1590	4	745	Blue	Blue	3

- 1. WHITE
- 2. WHITE AND BLACK
- 3. LIQUID
- 4. 15,900



- 1. BEVEL
- 2. PILOT BALLON
- 3. 14-15MM ADAPTOR
- 4. CUFF



- 1.FLOWMETERS**
- 2. VAPORIZERS**
- 3.REBREATHING BAG**
- 4.CARBON DIOXIDE ABSORBER**