

PERIPHERAL NERVOUS SYSTEM

THE EYEBALL

Dr. Aiman Qais Afar
Surgical Anatomist

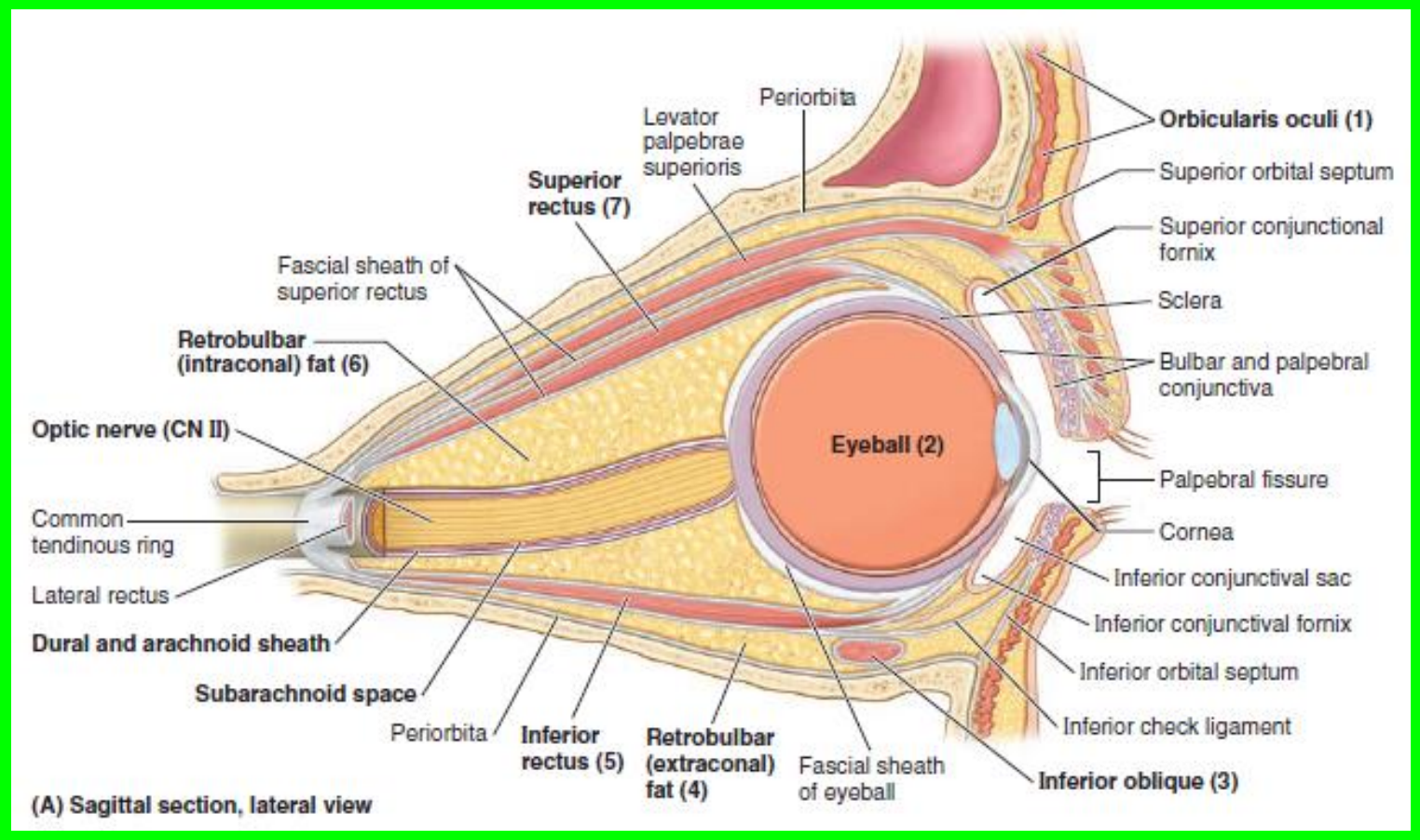
College of Medicine / University of Mutah
2024-2025

Sunday 2 March 2025

Eyeball

The eyeball contains the optical apparatus of the visual system. It occupies most of the anterior portion of the orbit, suspended by **six extrinsic muscles** that control its movements, and a **fascial suspensory apparatus**

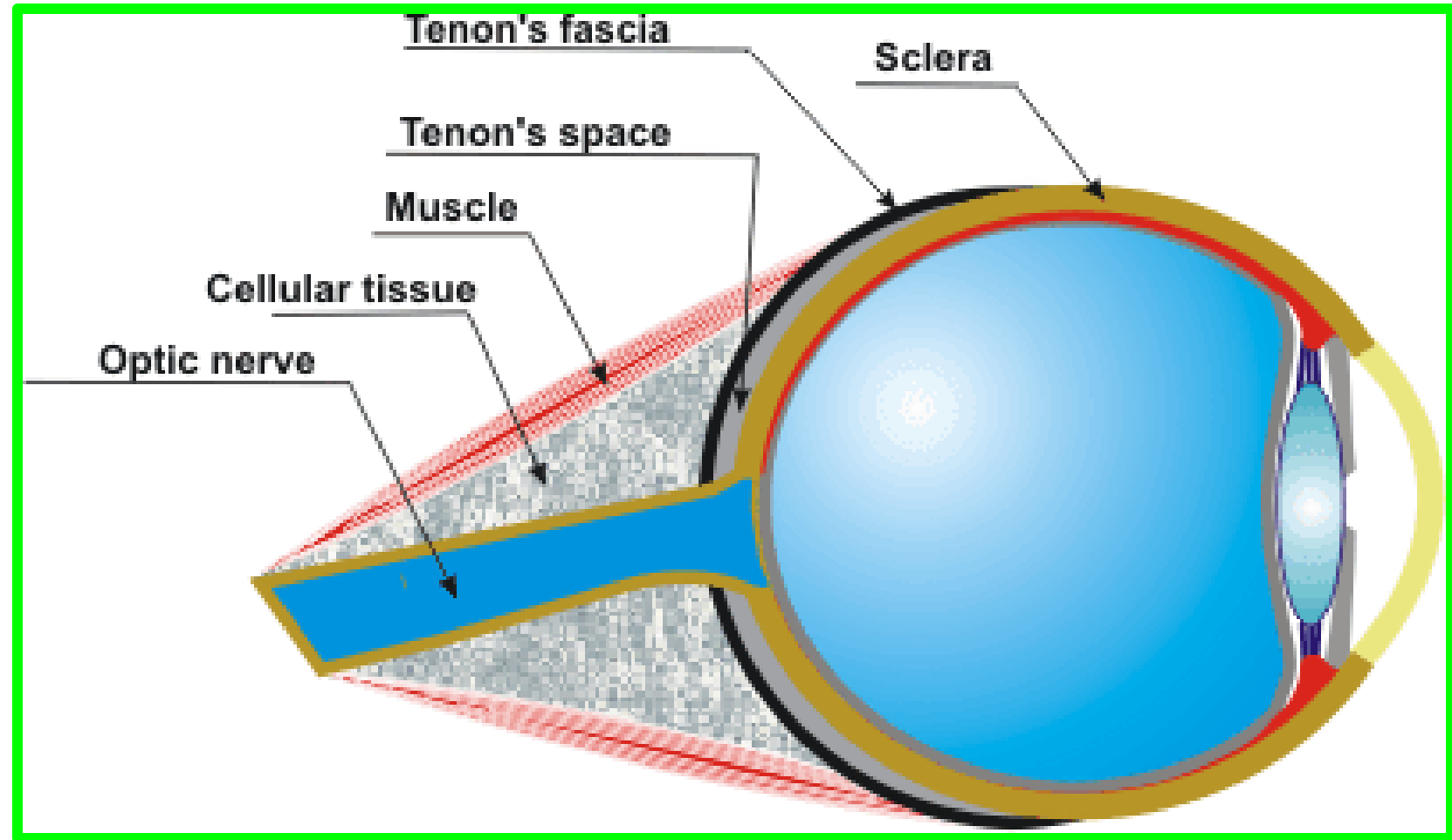
- ❖ It measures approximately **25 mm in diameter**.
- ❖ All anatomical structures within the eyeball have a circular or spherical arrangement



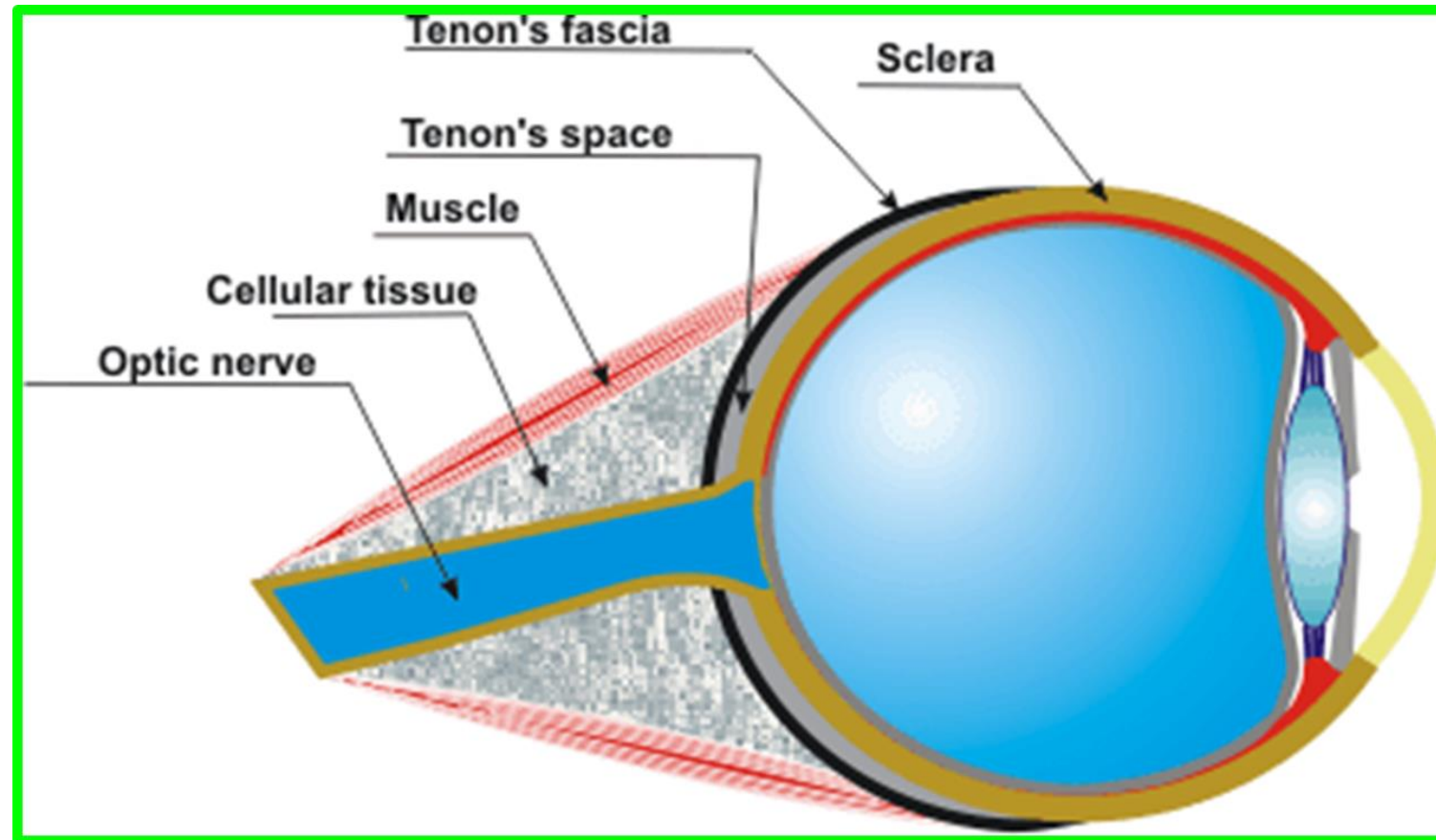
Eyeball

The eyeball proper has **three layers**; however, there is an **additional connective tissue layer** that surrounds the eyeball, supporting it within the orbit.

The connective tissue layer is composed posteriorly of **the fascial sheath of the eyeball (bulbar fascia or Tenon capsule)**, which forms the actual socket for the eyeball, and **anteriorly of bulbar conjunctiva**

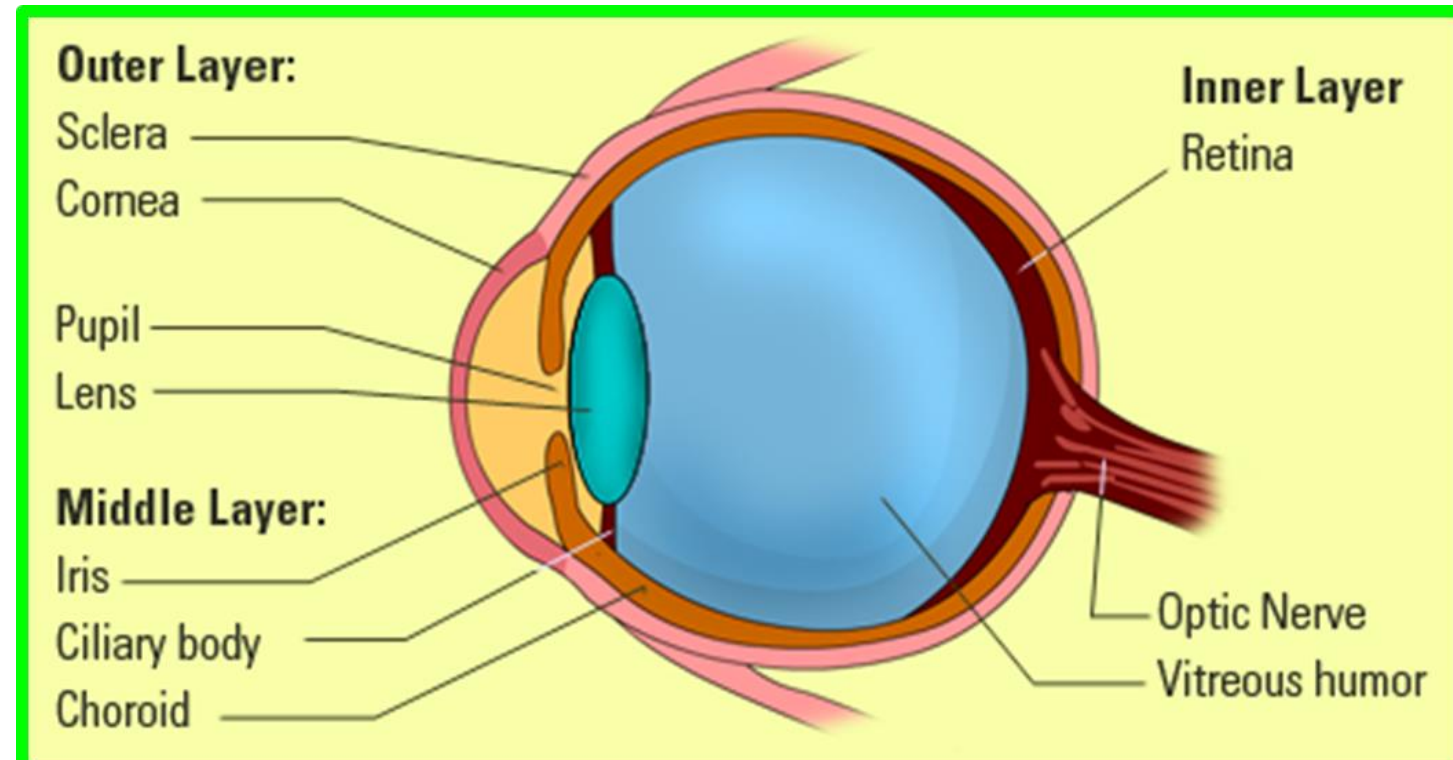
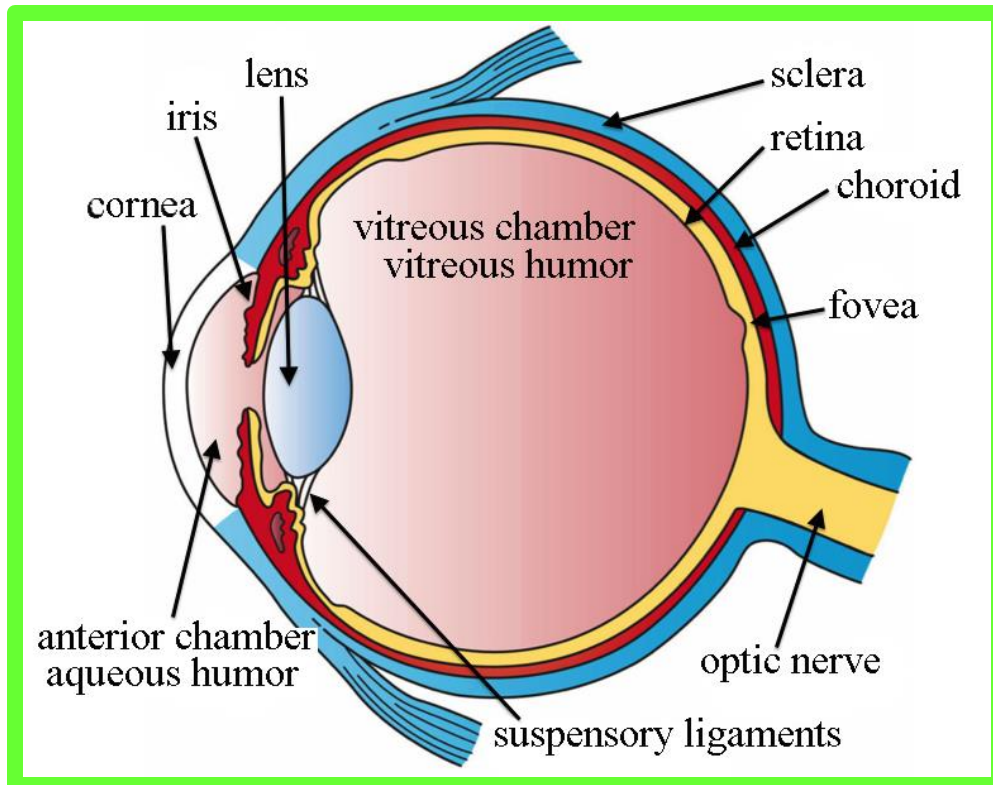


- ❖ The fascial sheath is the most substantial portion of the suspensory apparatus.
- ❖ A very loose connective tissue layer, **the episcleral space (a potential space)**, lies between **the fascial sheath** and **the outer layer of the eyeball**, facilitating movements of the eyeball within the fascial sheath (**Tenon space**).



The three layers of the eyeball are the:

- 1. Fibrous layer** (outer coat), consisting of the **sclera** and **cornea**
- 2. Vascular layer** (middle coat), consisting of **the choroid, ciliary body, and iris**
- 3. Inner layer** (inner coat), consisting of **the retina**, which has both optic and nonvisual parts



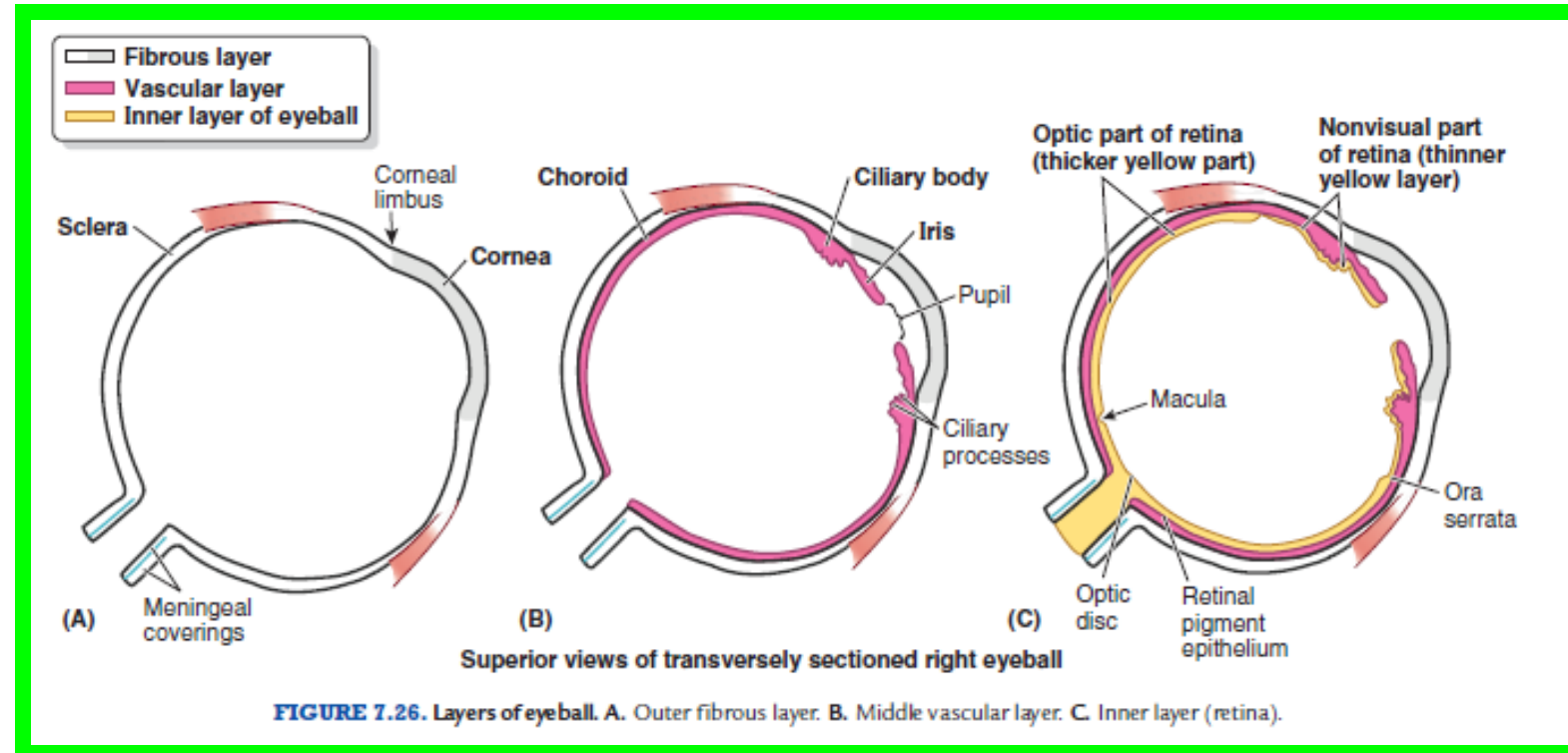
Eyeball

1. FIBROUS LAYER OF EYEBALL

The fibrous layer of the eyeball is the external fibrous skeleton of the eyeball, providing shape and resistance.

➤ The **sclera** is the **tough opaque part** of the fibrous layer (coat) of the eyeball,

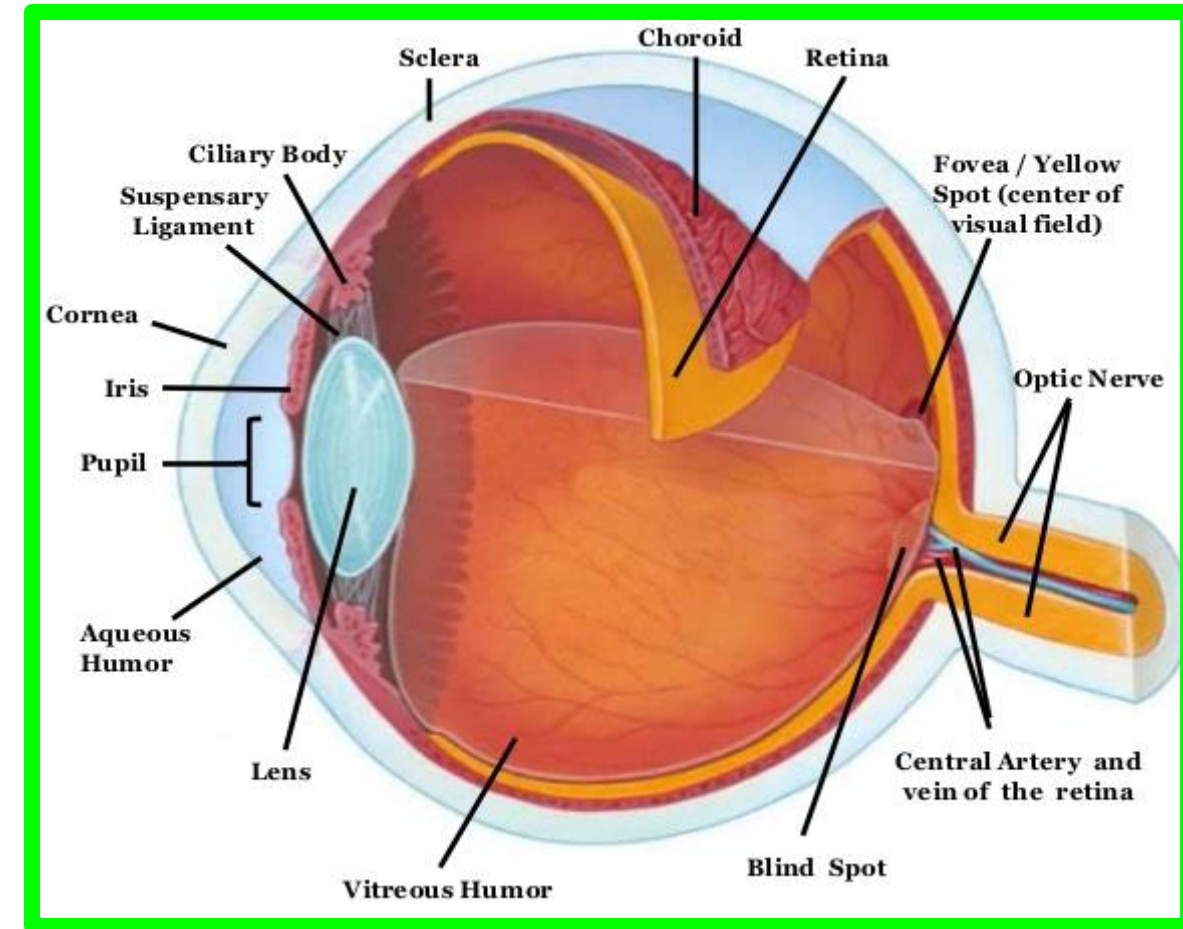
✓ covering **the posterior five sixths** of the eyeball and providing attachment for both the extrinsic (extra-ocular) and the intrinsic muscles of the eye



1. FIBROUS LAYER OF EYEBALL

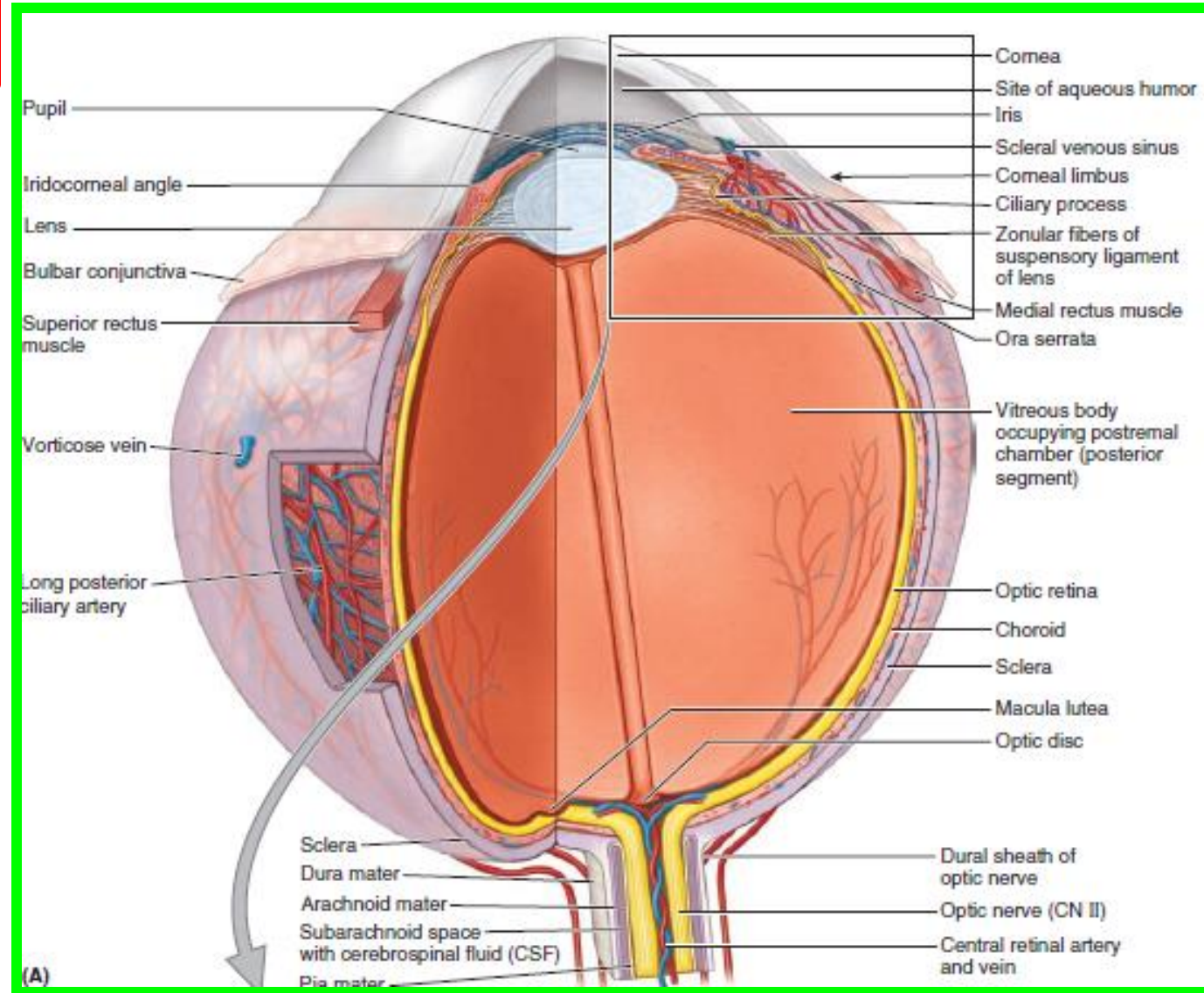
- ✓ The anterior part of the sclera is visible through the transparent bulbar conjunctiva as “the white of the eye” .
- The cornea is the transparent part of the fibrous layer covering the anterior one sixth of the eyeball.

✓ The convexity of the cornea is greater than that of the sclera and so it appears to protrude from the eyeball when viewed laterally.



1. FIBROUS LAYER OF EYEBALL

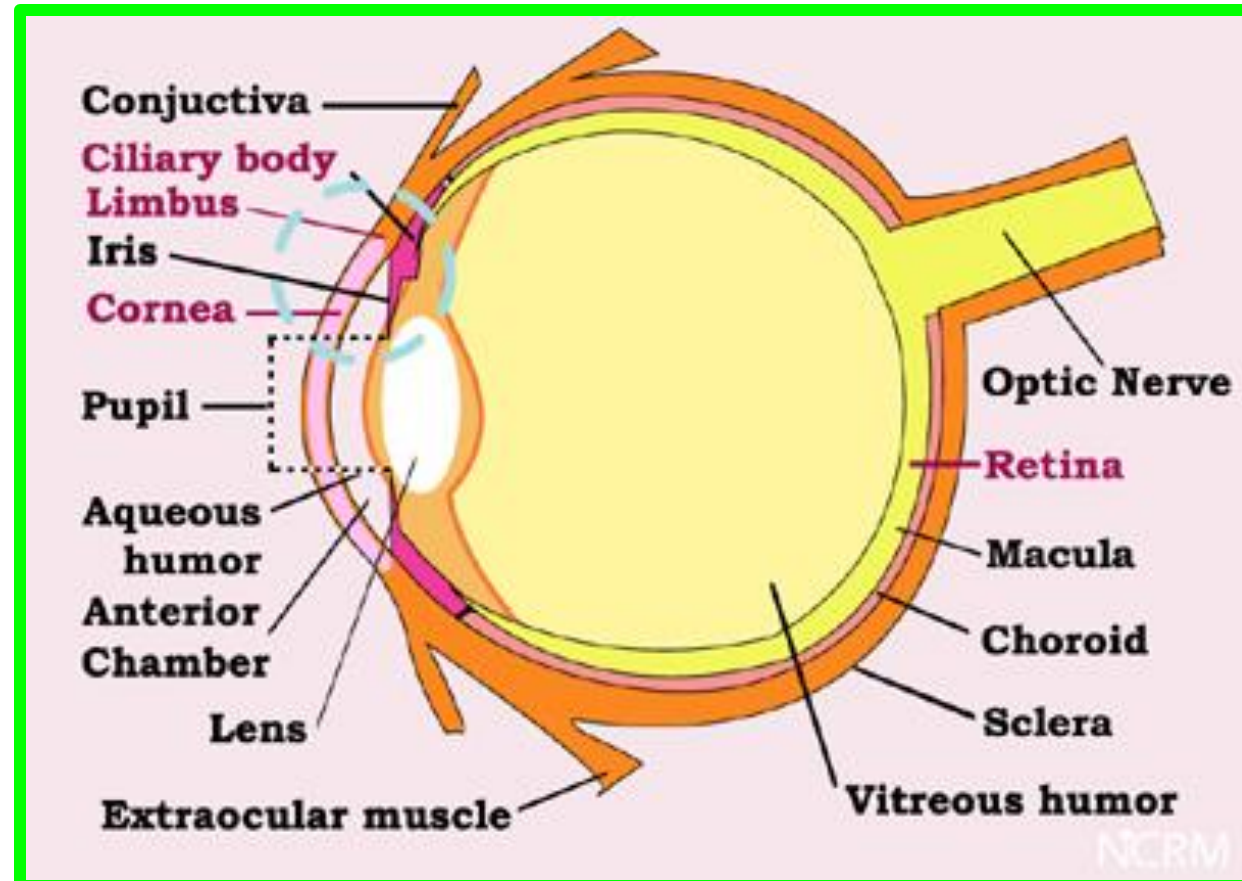
Whereas the sclera is relatively avascular, the cornea is completely avascular, receiving its nourishment from capillary beds around its periphery and fluids on its external and internal surfaces, the lacrimal fluid and aqueous humor, respectively .



Lacrimal fluid also provides oxygen absorbed from the air

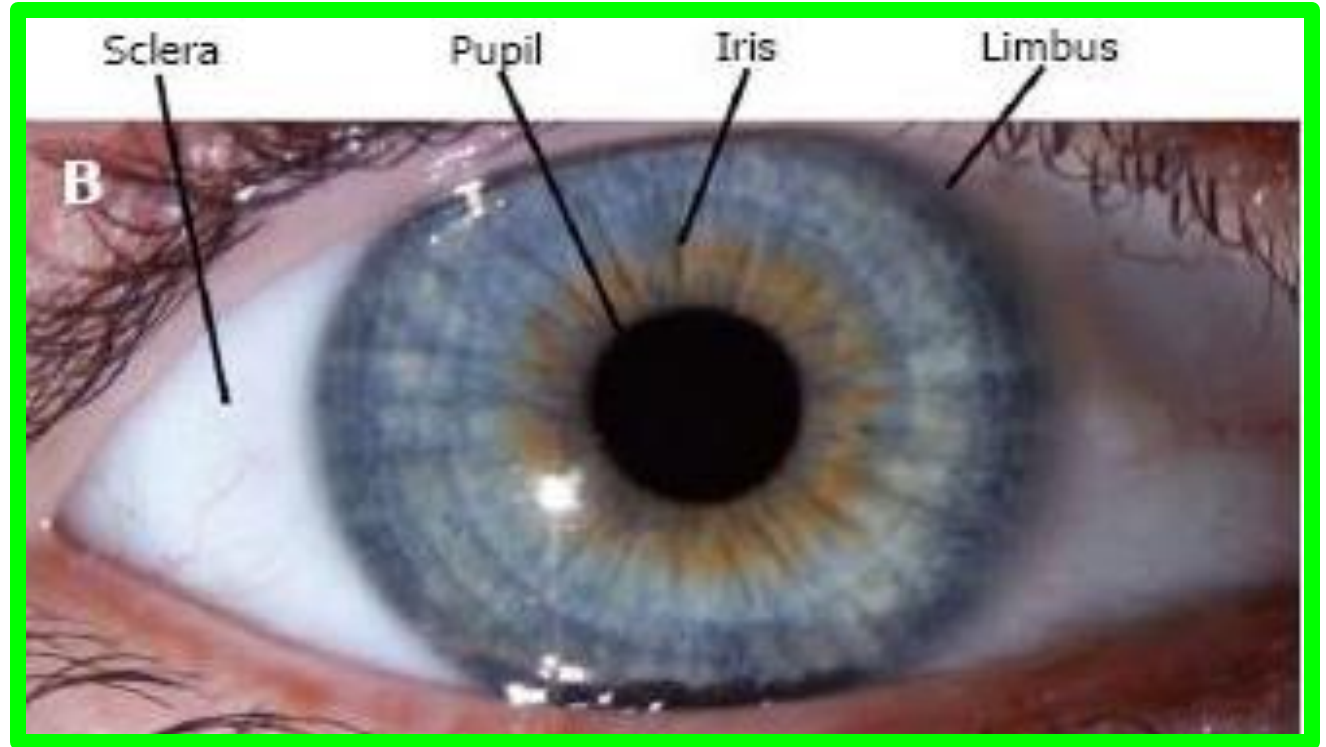
1. FIBROUS LAYER OF EYEBALL

- ✓ The **cornea** is highly sensitive to touch; its innervation is provided by the ophthalmic nerve (CN V1). Even very small foreign bodies (e.g., dust particles) elicit **blinking, flow of tears, and sometimes severe pain**.
- ✓ Drying of the **corneal** surface may cause **ulceration**



1. FIBROUS LAYER OF EYEBALL

- ✓ **The limbus of the cornea** is the angle formed by the intersecting curvatures of sclera and cornea **at the corneoscleral Junction**.



- ✓ The junction is a **1-mm wide**, gray, and translucent circle including numerous capillary loops involved in nourishing the avascular cornea.

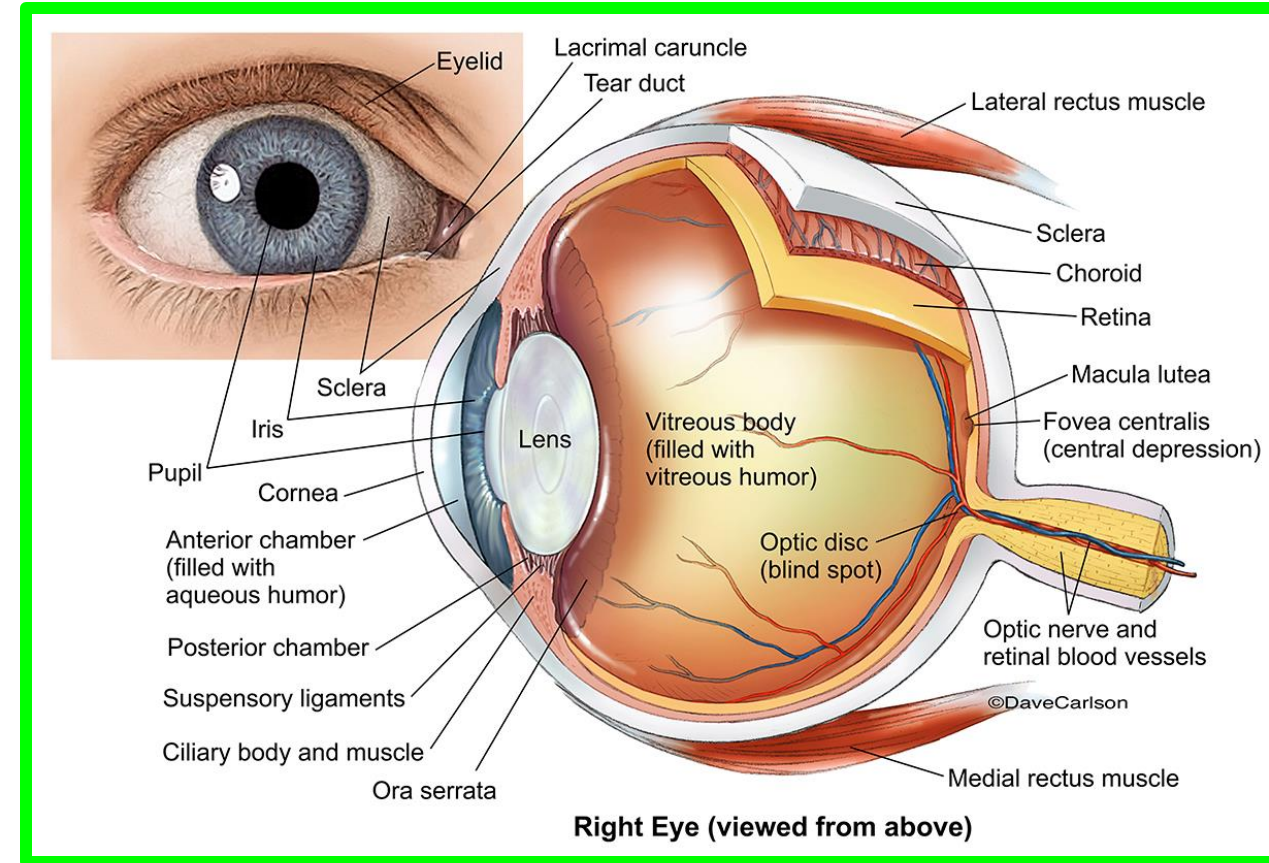
2. VASCULAR LAYER OF EYEBALL

Dr. Aiman AL Maathidy

Sunday 2 March 2025

❖ The vascular layer of the eyeball (also called the uvea or uveal tract) consists of **the choroid, ciliary body, and iris**.

❖ **The choroid**, a **dark reddish-brown layer** between the sclera and the retina, forms the largest part of the vascular layer of the eyeball and lines most of the sclera.



✓ Within this pigmented and dense vascular bed, **larger vessels** are located externally (near the sclera).

2. VASCULAR LAYER OF EYEBALL

12

Dr. Aiman AL Maathidy

Sunday 2 March 2025

- ✓ The finest vessels (the capillary lamina of the choroid or **choriocapillaris**, an extensive capillary bed) are innermost, adjacent to the **avascular light-sensitive layer of the retina**, which it supplies with oxygen and nutrients.

- ✓ Engorged with blood in life (it has the highest perfusion rate per gram of tissue of all vascular beds of the body),



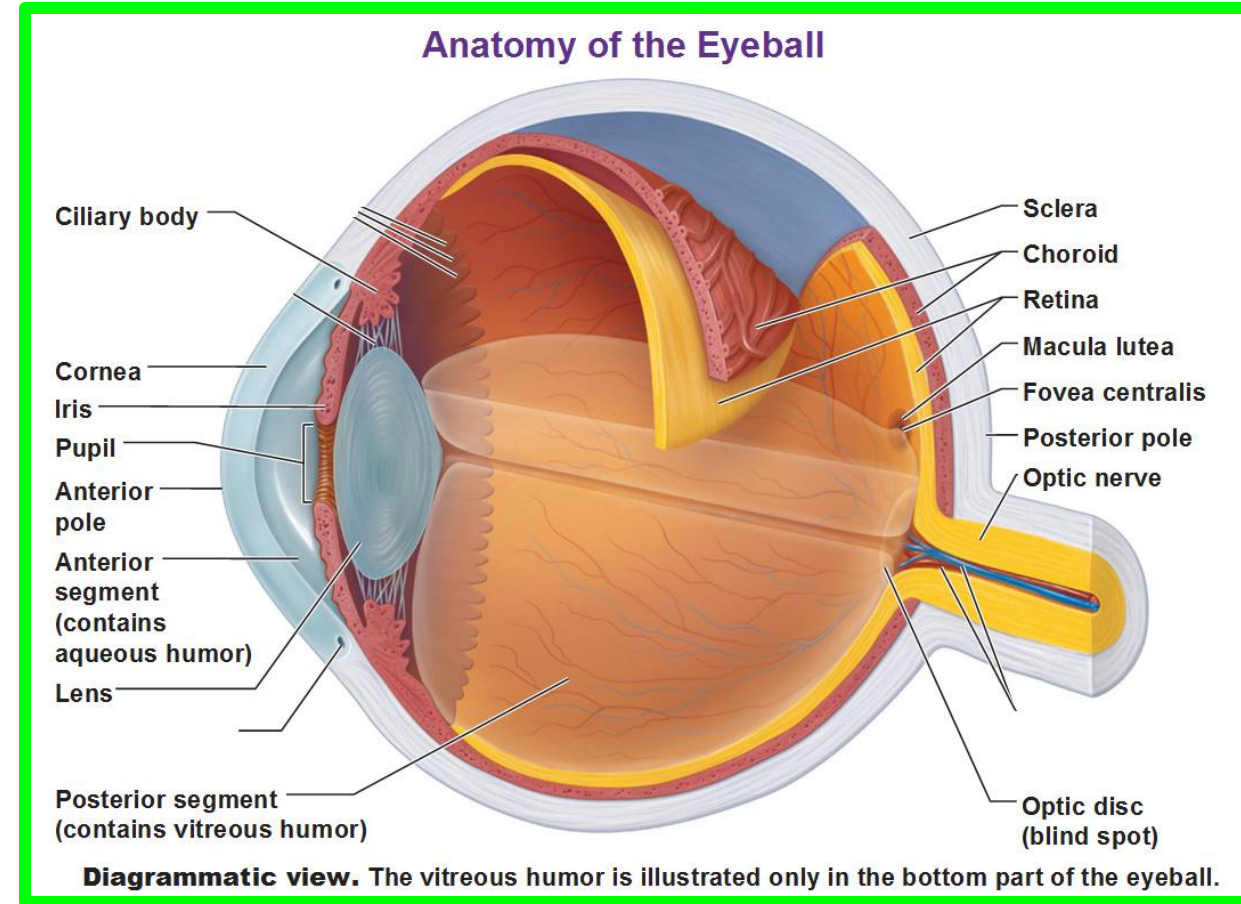
- ✓ this layer is responsible for the “**red eye**” reflection that occurs in flash photography

2. VASCULAR LAYER OF EYEBALL

✓ The ciliary body is a ring-like thickening of the layer posterior to **the corneoscleral junction** that is muscular as well as vascular.

✓ It connects **the choroid** with **the circumference of the iris**.

✓ The ciliary body provides attachment for **the lens**.

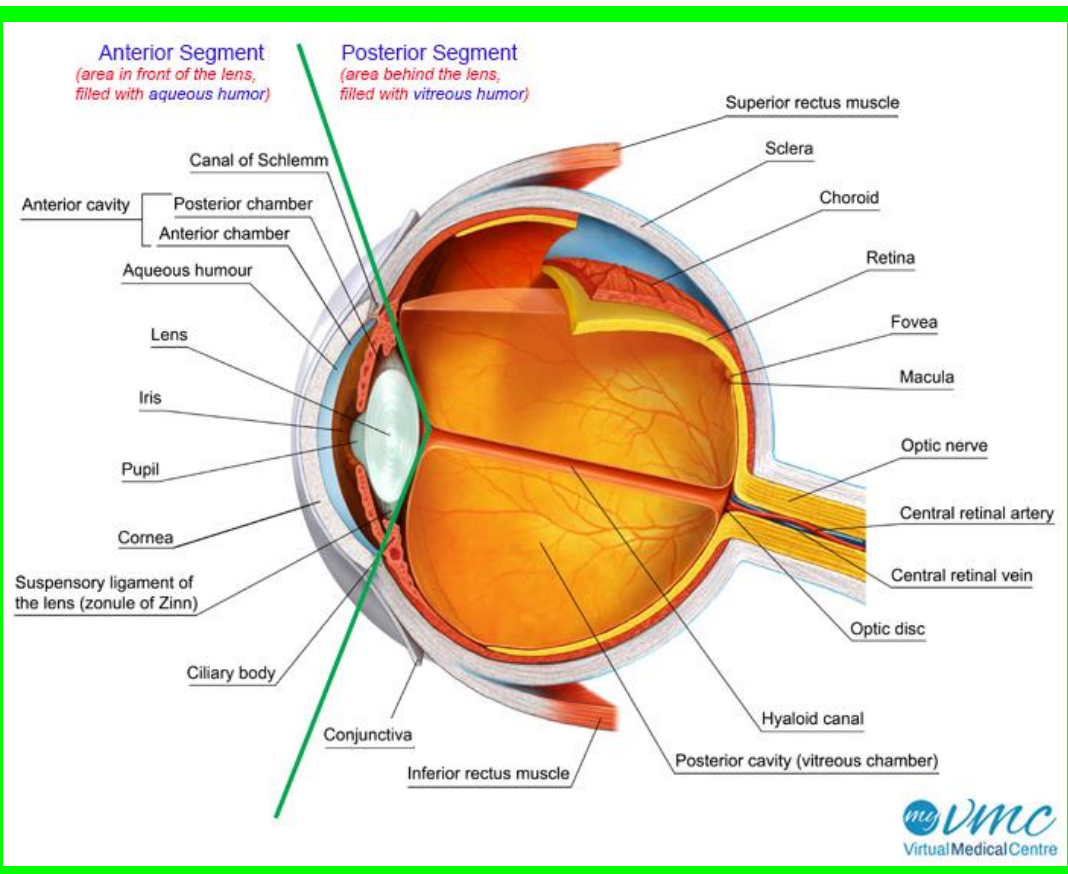


✓ The contraction and relaxation of the circularly arranged smooth muscle of the ciliary body **controls thickness**, and therefore **the focus**, of **the lens**.

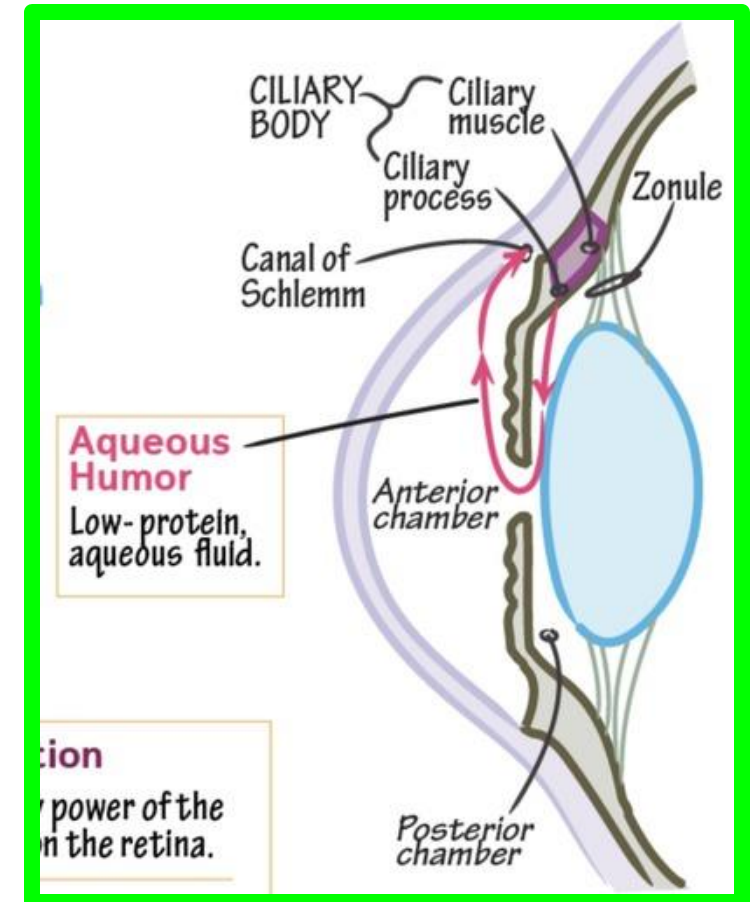
2. VASCULAR LAYER OF EYEBALL

✓ Folds on the internal surface of the ciliary body, **the ciliary processes**, secrete **aqueous humor**.

✓ **Aqueous humor** fills the **anterior segment of the eyeball**, the interior of the eyeball anterior to the lens, suspensory ligament, and ciliary body.

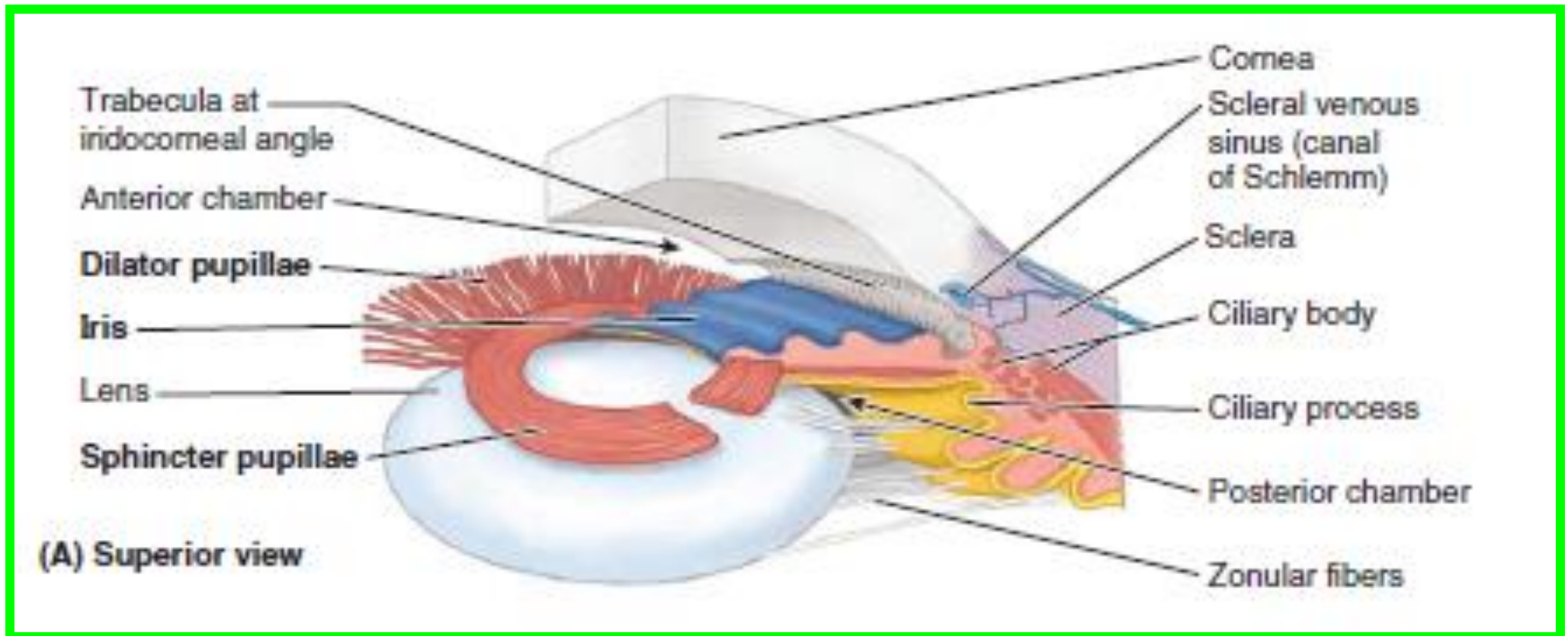


Sunday 2 March 2025
Dr. Aiman AL Maathidy



2. VASCULAR LAYER OF EYEBALL

- ❖ The iris, which literally lies on the anterior surface of the lens, is a **thin contractile diaphragm** with a central aperture, **the pupil**, for transmitting light
- ✓ When awake, the size of the pupil varies continually to regulate the amount of light entering the eye

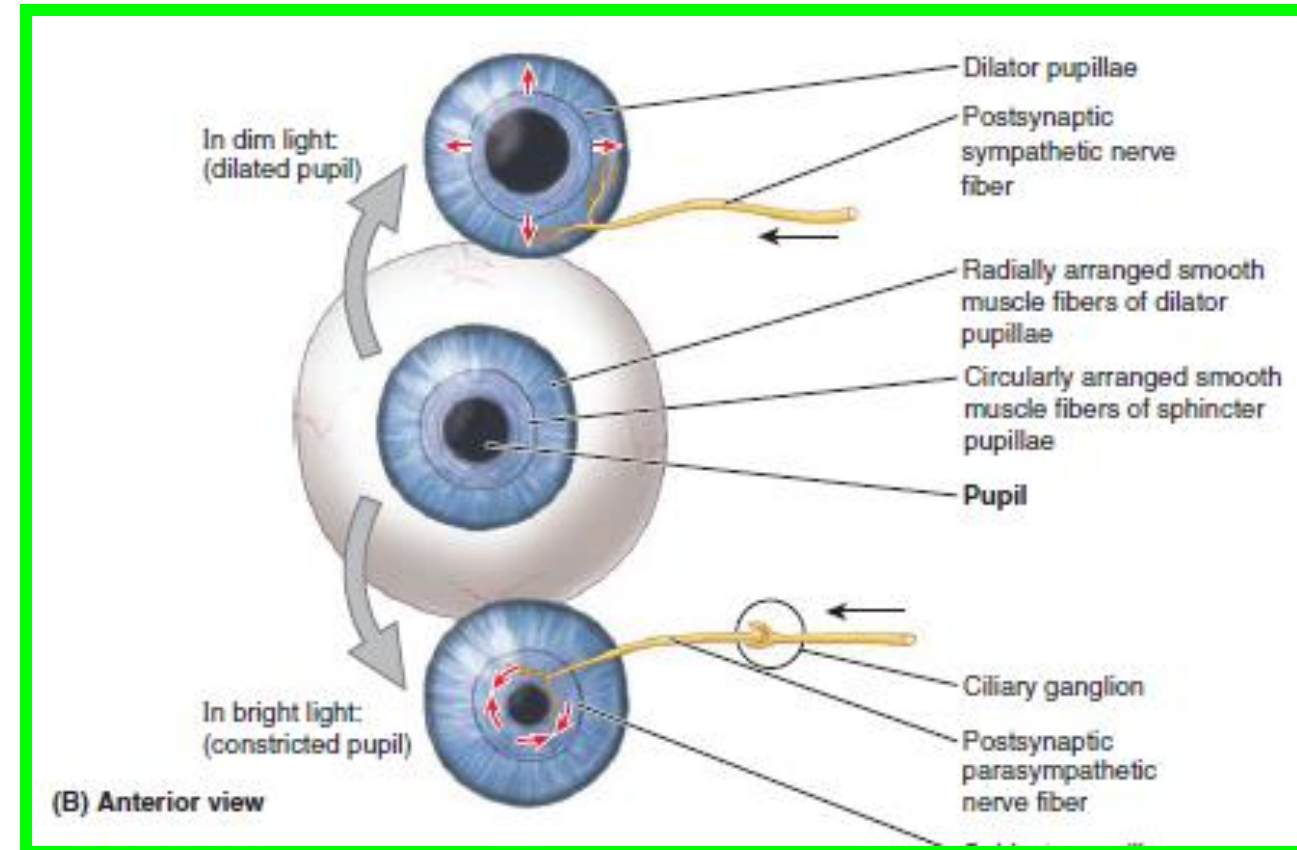


2. VASCULAR LAYER OF EYEBALL

Two involuntary muscles control the size of the pupil:

❖ the parasympathetically stimulated, **circularly arranged sphincter pupillae** decreases its diameter (**constrict or contracts the pupil, pupillary miosis**)

❖ and the sympathetically stimulated, **radially arranged dilator pupillae** increases its diameter (**dilates the pupil**).



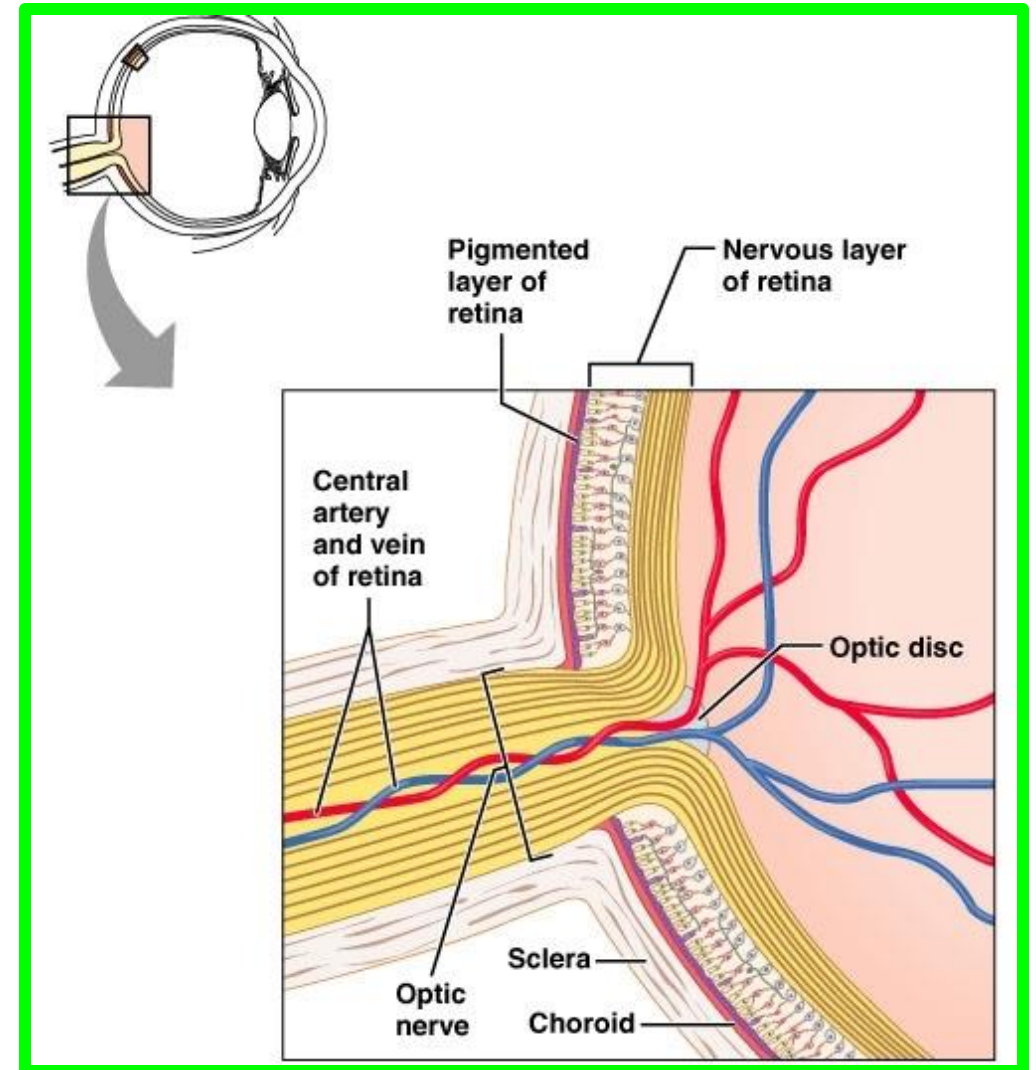
3. INNER LAYER OF EYEBALL

- ❖ The inner layer of the eyeball is the retina.
- ❖ It consists grossly of two functional parts with distinct locations:

- ❖ the optic part
- ❖ nonvisual part

✓ A. The optic part of the retina;
is sensitive to visual light rays and has
two layers:

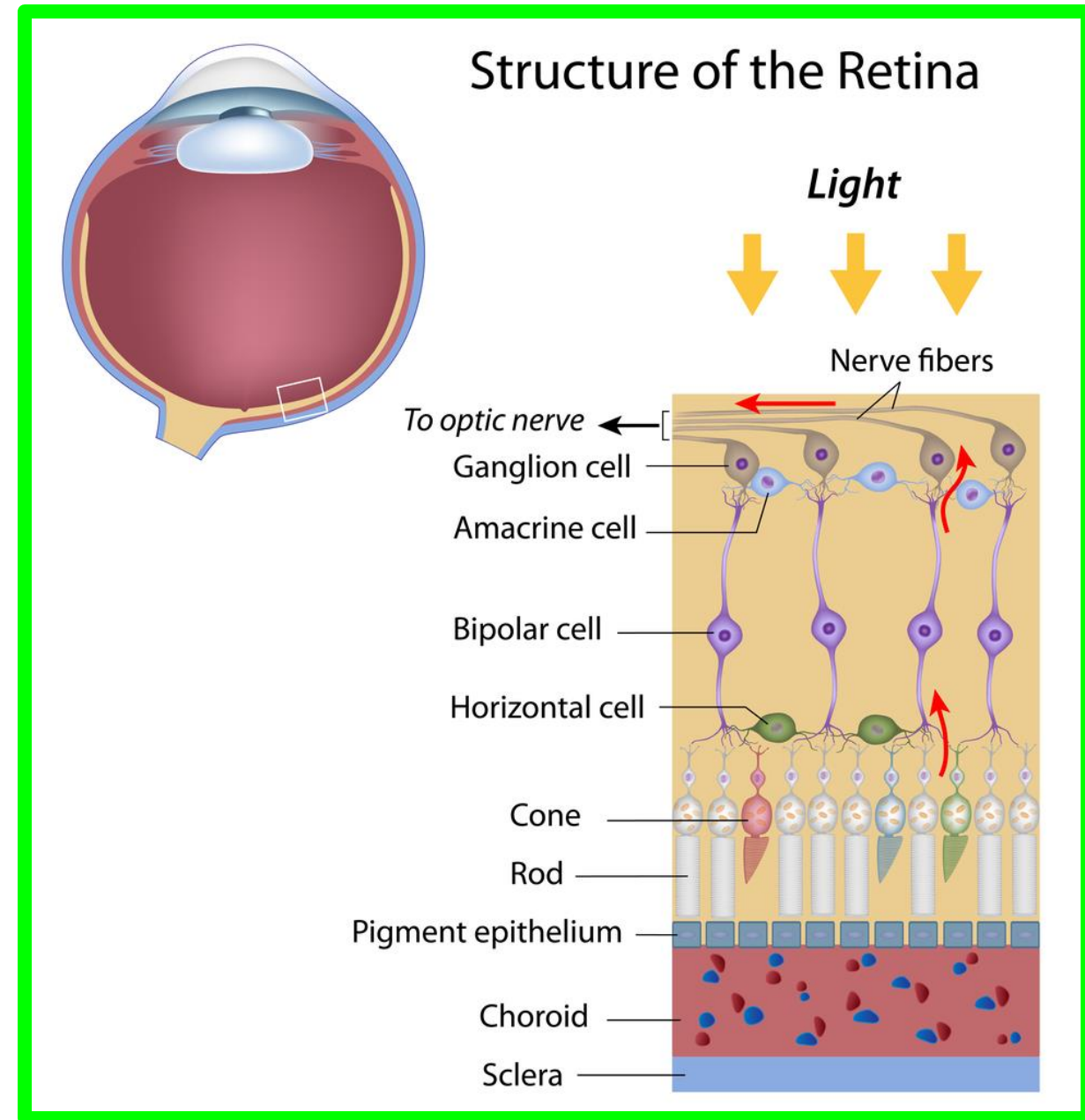
a neural layer and pigmented layer.



3. INNER LAYER OF EYEBALL

The neural layer is light receptive.

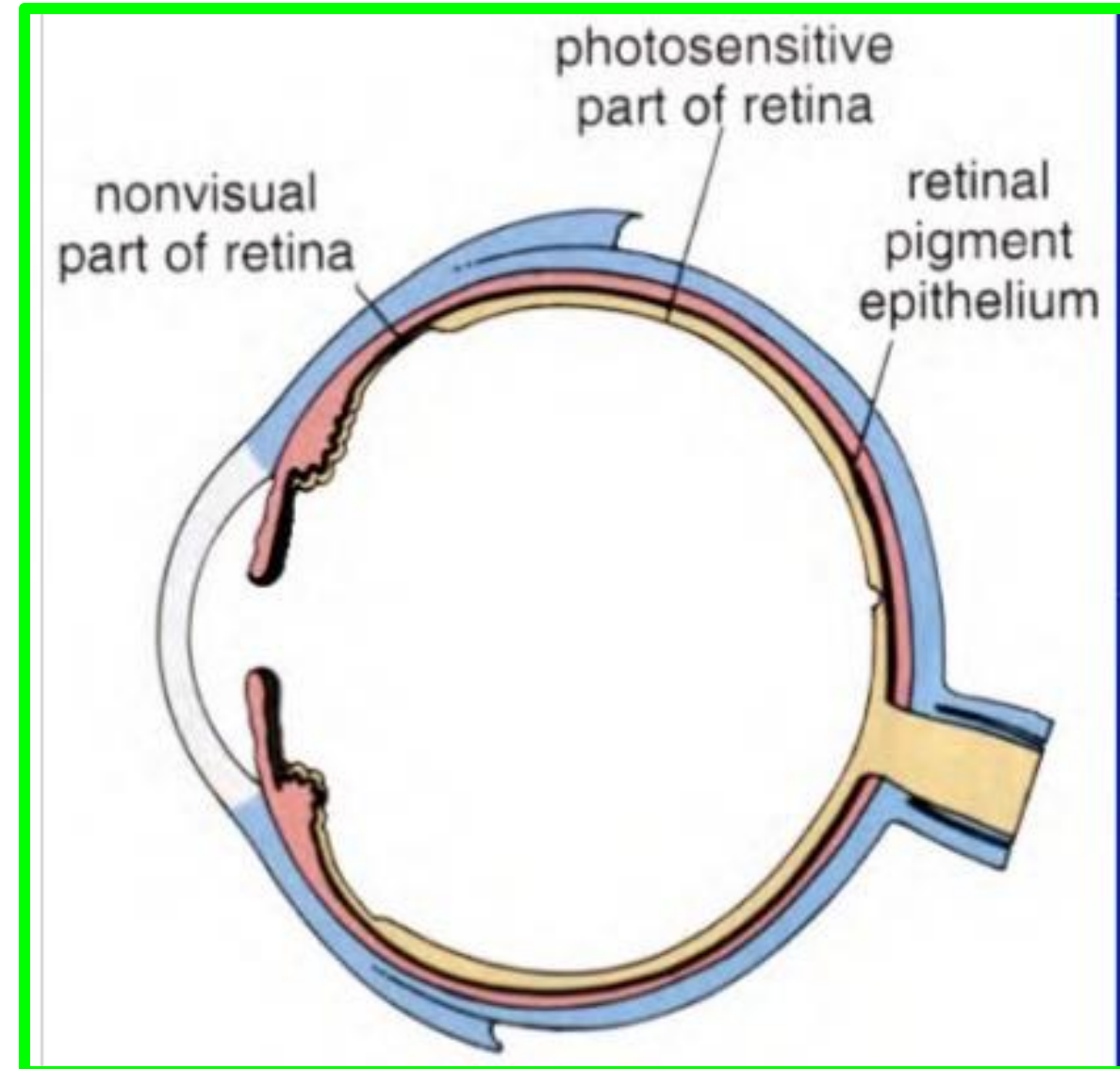
The pigmented layer consists of a single layer of cells that reinforces the **light-absorbing property** of the choroid in reducing the scattering of light in the eyeball



3. INNER LAYER OF EYEBALL

- ✓ **B. The nonvisual retina** is an anterior continuation of the pigmented layer and a layer of supporting cells.

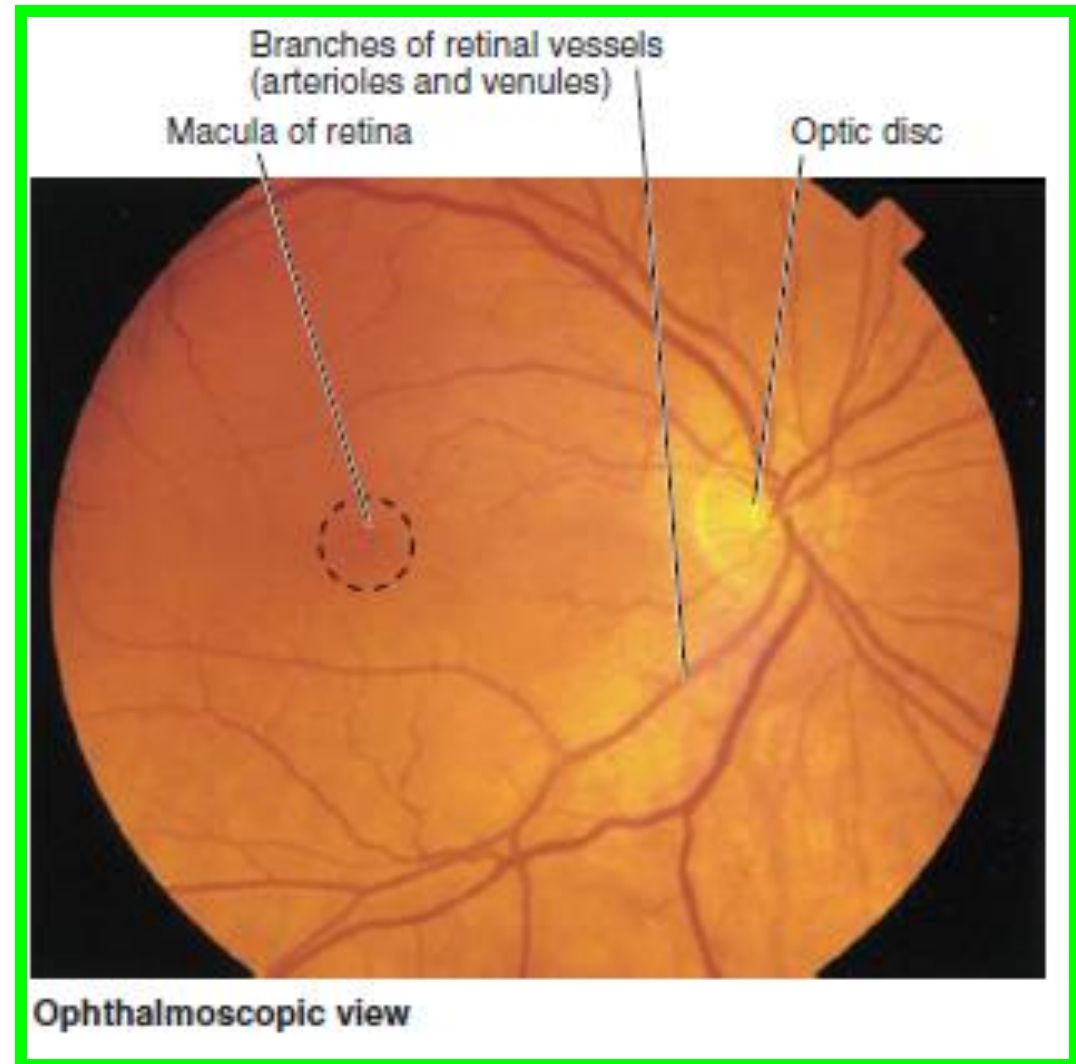
The nonvisual retina extends over **the ciliary body (ciliary part of the retina)** and the posterior surface of **the iris (iridial part of the retina)** to the pupillary margin



3. INNER LAYER OF EYEBALL

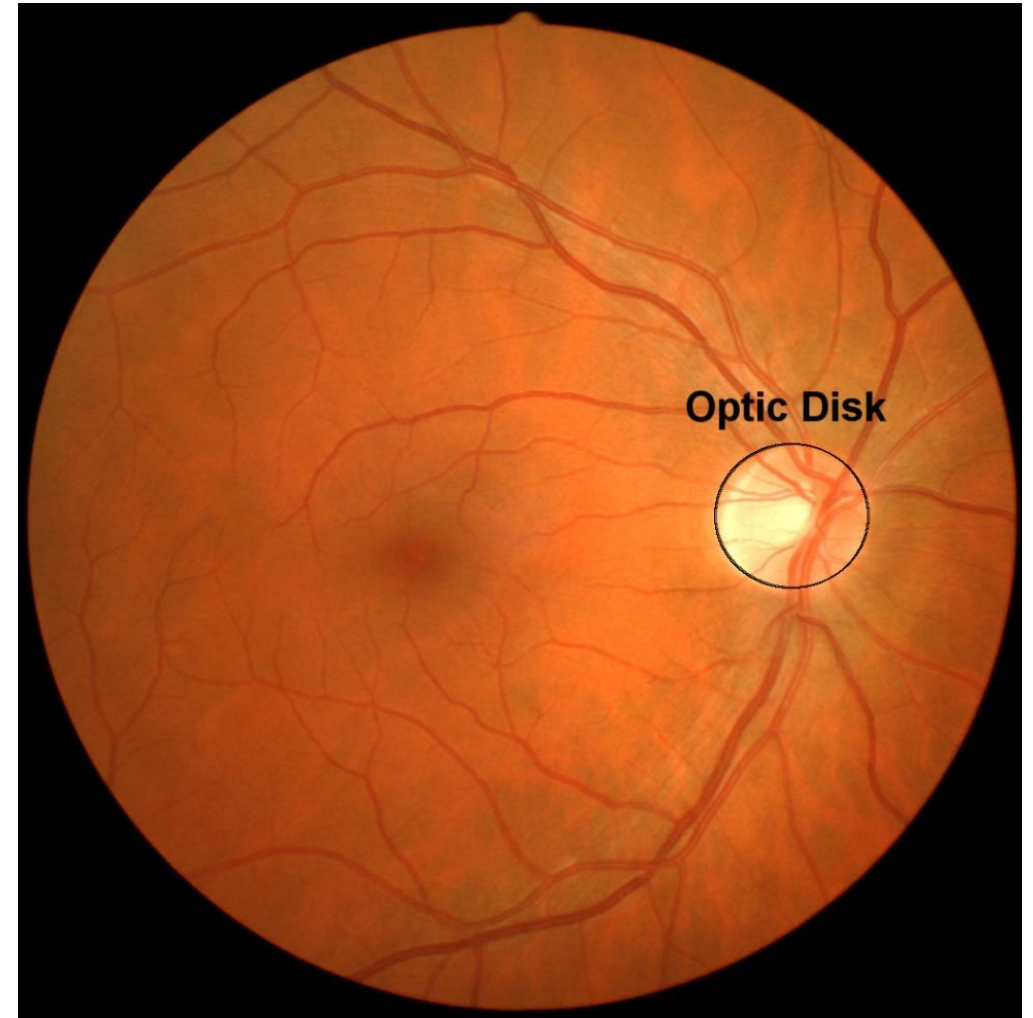
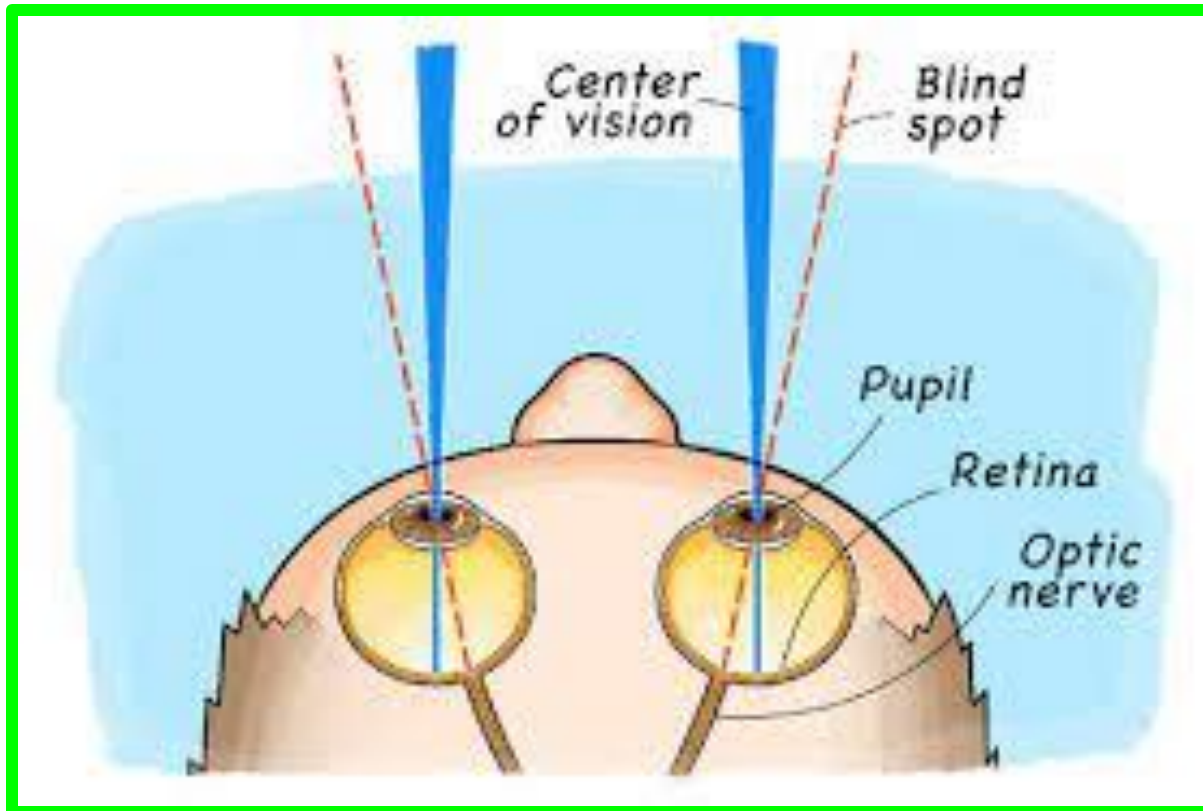
Clinically, the internal aspect of the posterior part of the eyeball, where light entering the eyeball is focused, is referred to as **the fundus of the eyeball (ocular fundus)**.

The retina of the fundus includes a distinctive circular area, **the optic disc (optic papilla)**, where the sensory fibers and vessels conveyed by the **optic nerve (CN II)** enter and radiate to the eyeball.



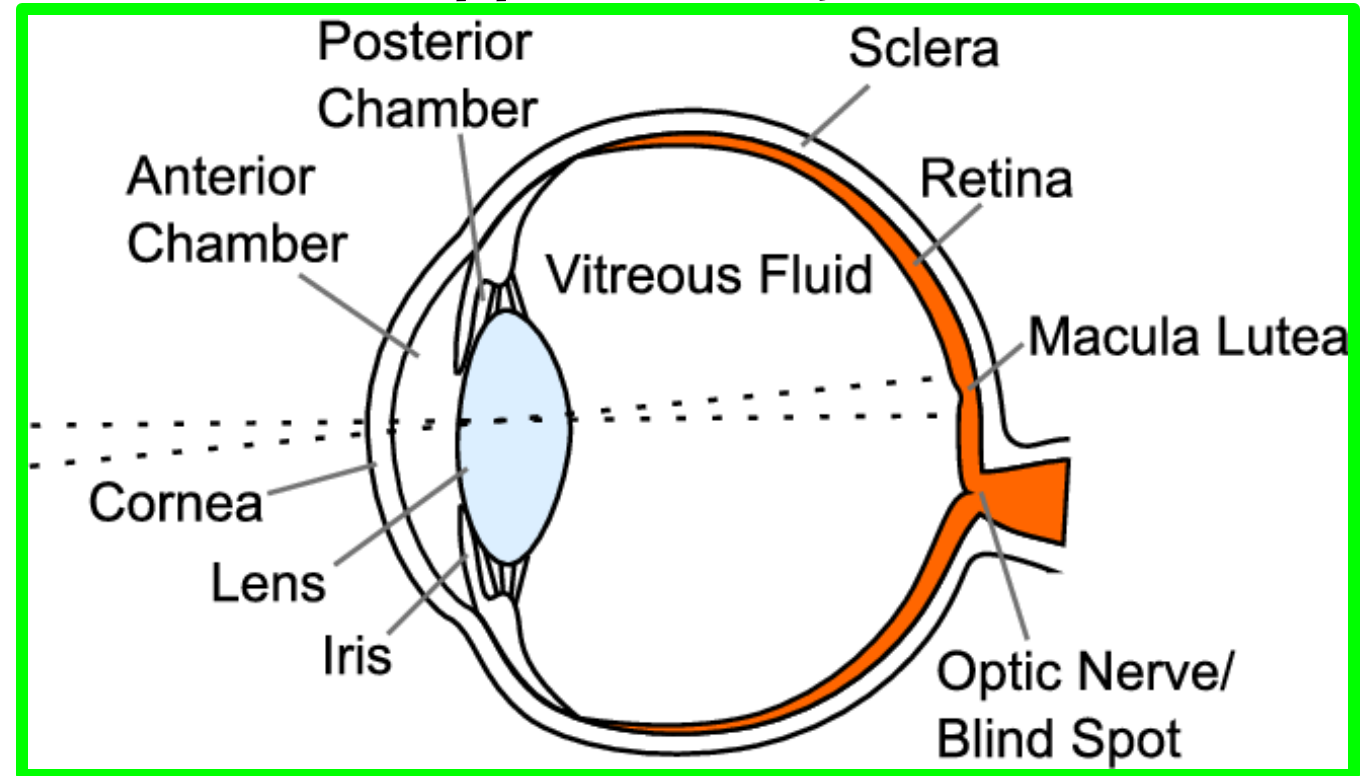
3. INNER LAYER OF EYEBALL

Because it contains no photoreceptors, the optic disc is insensitive to light. Hence, it is commonly called **the blind spot**.



3. INNER LAYER OF EYEBALL

- Just lateral to the optic disc is **the macula of the retina** or **macula lutea** (**L. yellow spot**). **The yellow color** of the macula is apparent only when the retina is **examined with red-free light**.



- The macula lutea** is a small oval area of the retina with **special photoreceptor cones** that **is specialized for acuity of vision**.
- It is not normally observed with an **ophthalmoscope**

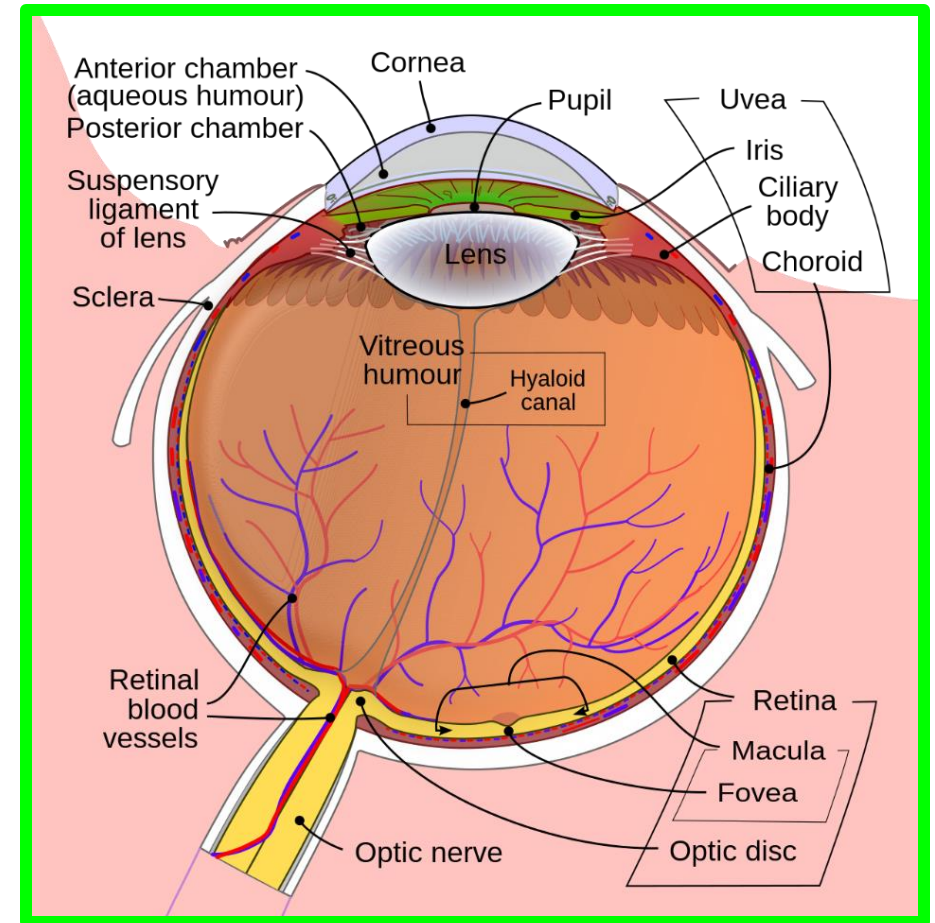
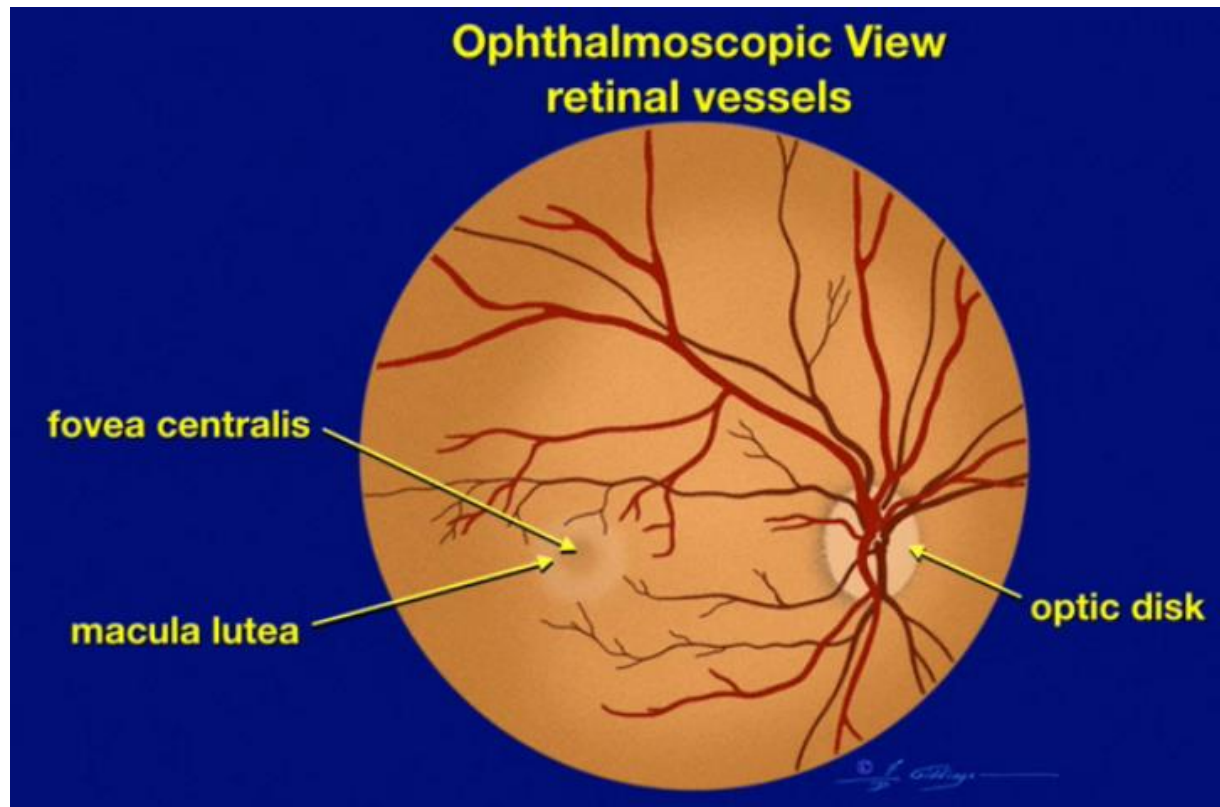
3. INNER LAYER OF EYEBALL

Dr. Aiman AL Maathidy

Sunday 2 March 2025

23

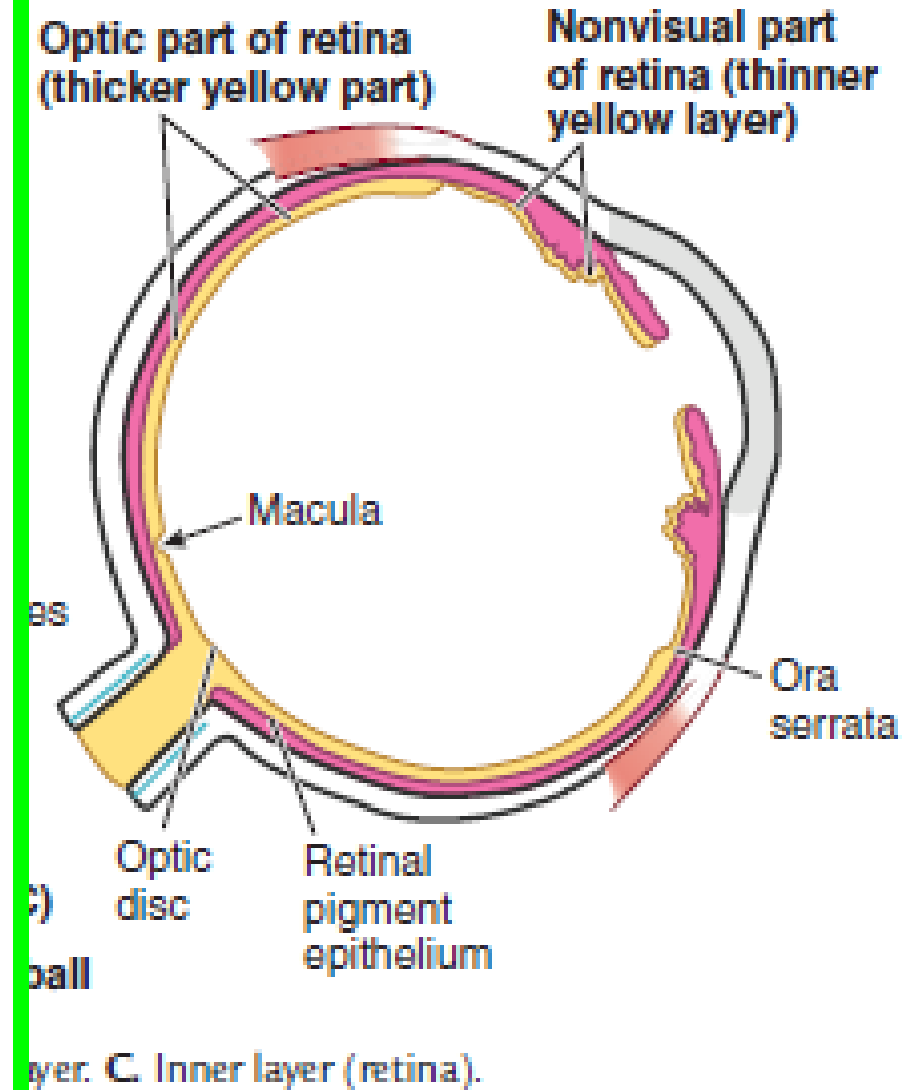
At the center of the macula lutea is a depression, **the fovea centralis (L. central pit)**, **the area of most acute vision.**



✓ **The fovea** is approximately **1.5 mm** in diameter; its center, **the foveola**, does not have the capillary network visible elsewhere deep to the retina.

3. INNER LAYER OF EYEBALL

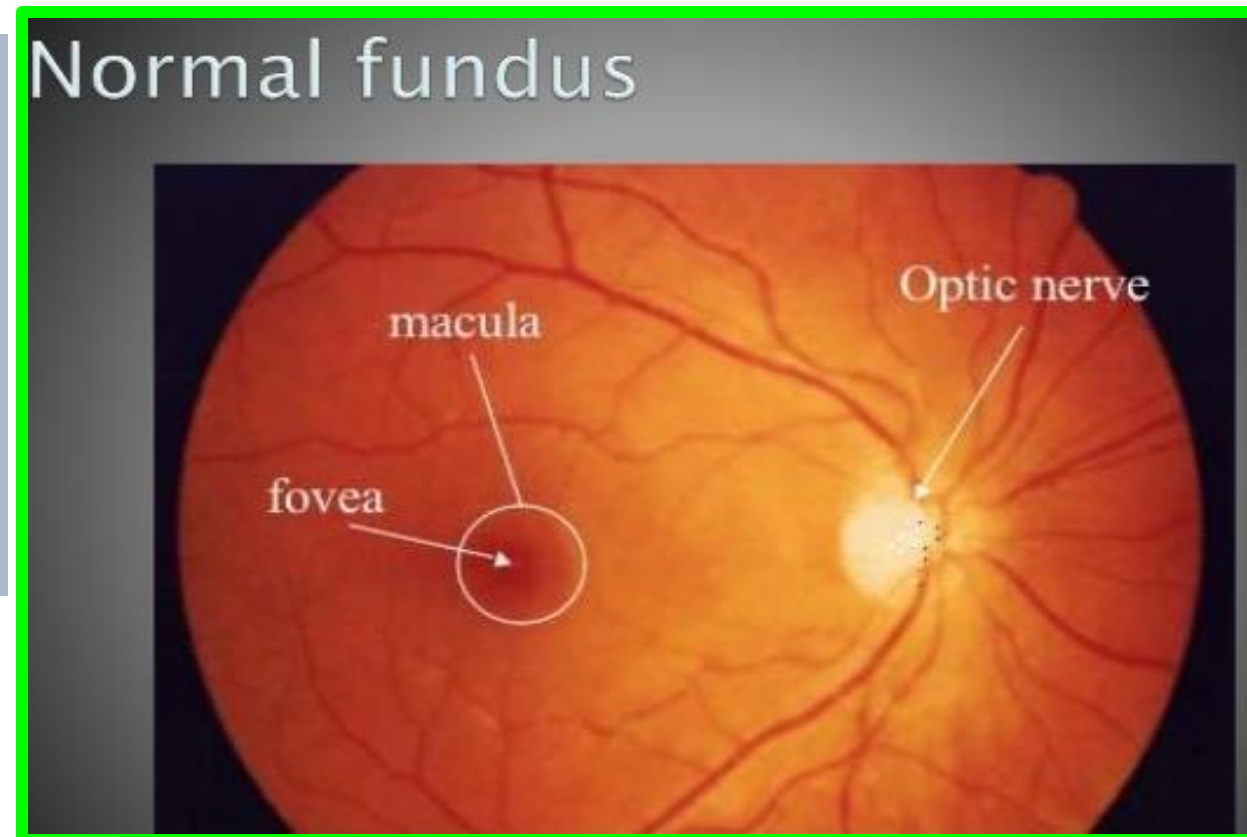
- ❖ **The optic part of the retina** terminates anteriorly along **the ora serrata** (L. serrated edge), the irregular posterior border of the ciliary body
- ❖ Except for the cones and rods of its neural layer, the retina is supplied by **the central retinal artery**, a branch of **the ophthalmic artery**.



Ophthalmoscopy

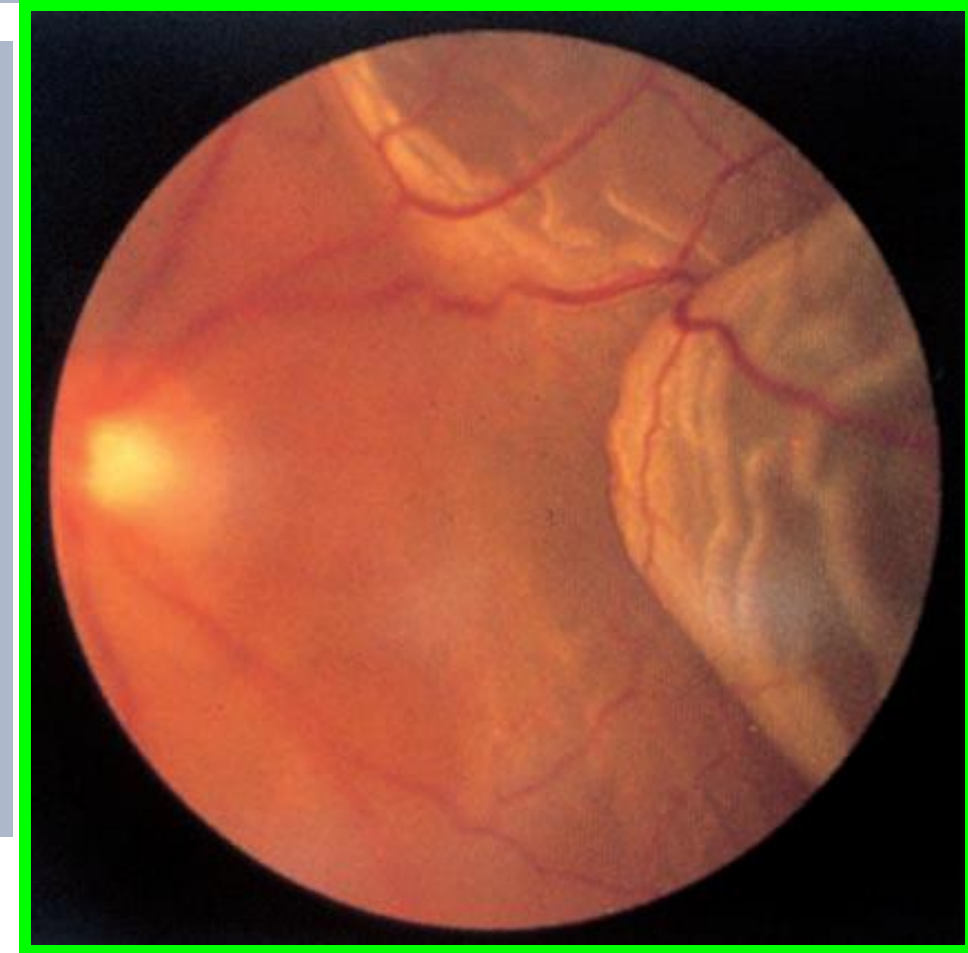
- ✓ Physicians view the fundus (inner surface of the posterior part) of the eye with an ophthalmoscope.
- ✓ The **retinal arteries** and **veins** radiate over the fundus from **the optic disc**.
- ✓ The pale, oval optic disc appears on the medial side, with **retinal vessels radiating from its center** in the ophthalmoscopic view of the retina

- ✓ Pulsation of the retinal arteries is usually visible.
- ✓ Centrally, at the posterior pole of the eyeball, **the macula lutea** appears **darker** than the reddish hue of surrounding areas of the retina.



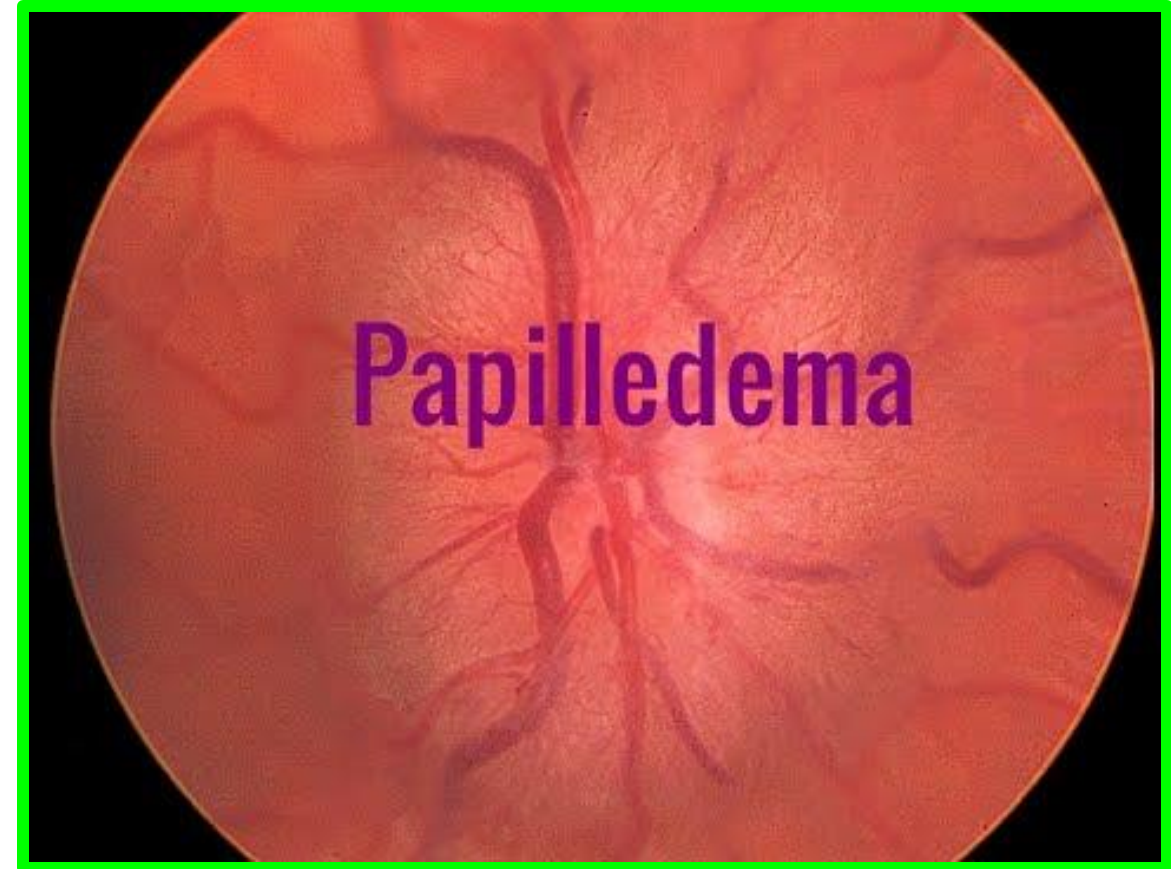
Detachment of Retina

- ❖ The layers of the developing retina are separated in the embryo by an **intraretinal space**.
 - ❖ During the early fetal period, the embryonic layers fuse, obliterating this space.
 - ❖ Although the pigment cell layer becomes firmly fixed to the choroid, its attachment to the neural layer is not firm.
-
- ❖ Consequently, detachment of the retina may follow a blow to the eye.
 - ❖ A detached retina usually results from **seepage of fluid** between the neural and pigmented layers of the retina, perhaps days or even weeks after trauma to the eye.
 - ❖ People with a retinal detachment may complain of **flashes of light** or **specks floating in front of their eye**.



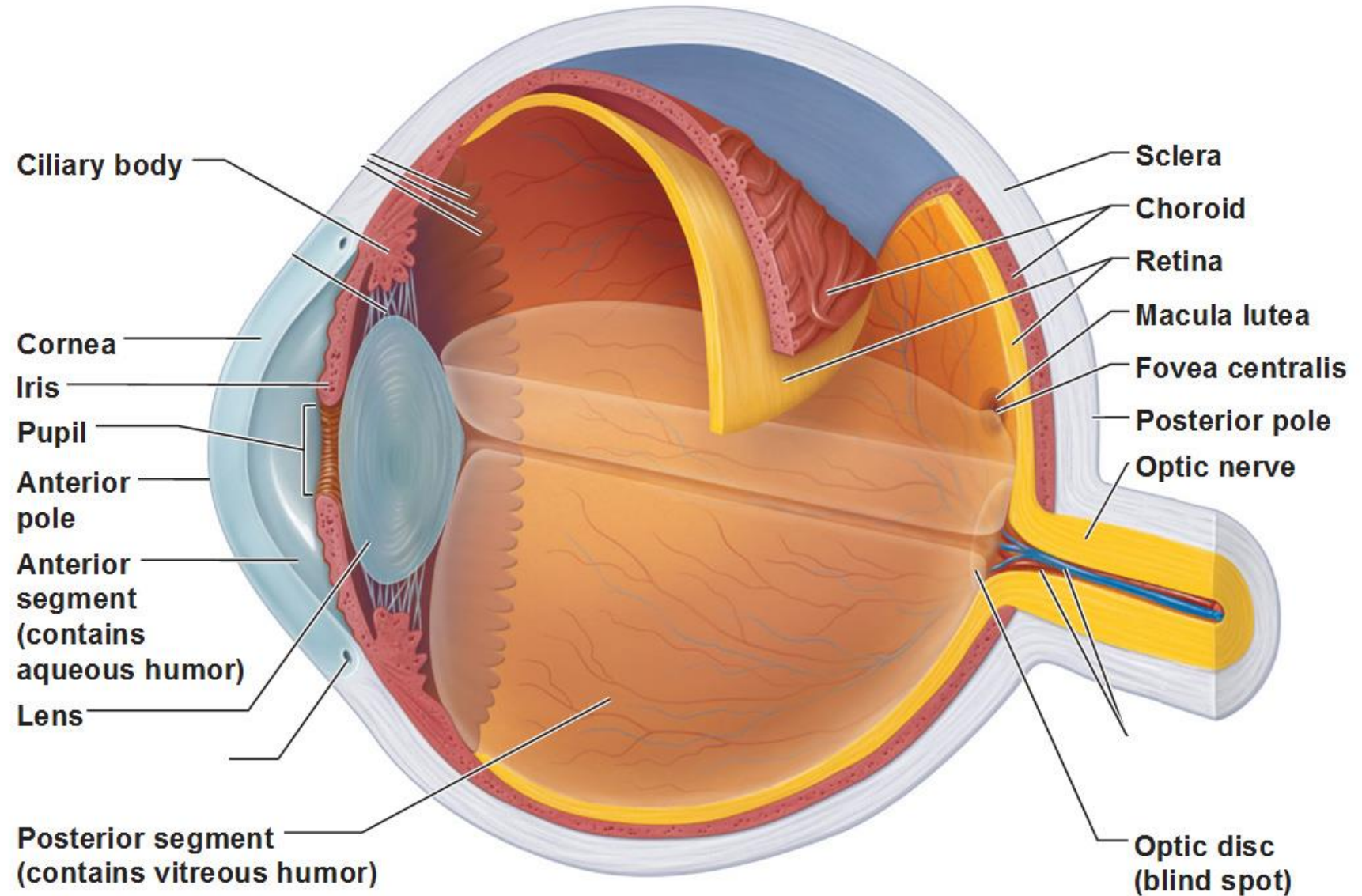
Papilledema

- ❑ An **increase in CSF pressure** slows **venous return** from the retina, causing edema of the retina (fluid accumulation). The edema is viewed during ophthalmoscopy as **swelling of the optic disc**, a condition called **papilledema**.



Eyeball

Anatomy of the Eyeball



Diagrammatic view. The vitreous humor is illustrated only in the bottom part of the eyeball.

Dr. Aiman Qais Afar
Sunday 2 March 2025

