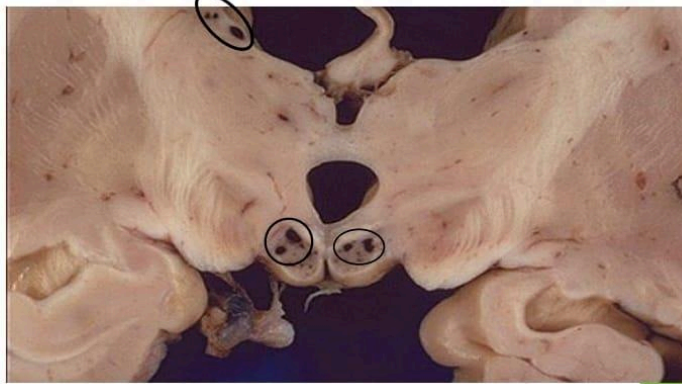


1)ANS:

Acquired metabolic diseases → Wernicke encephalopathy

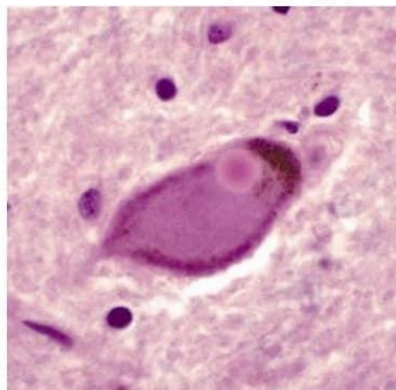
Wernicke encephalopathy is characterized by foci of hemorrhage and necrosis in the mamillary bodies and the walls of the third and fourth ventricles.

Foci of hemorrhage



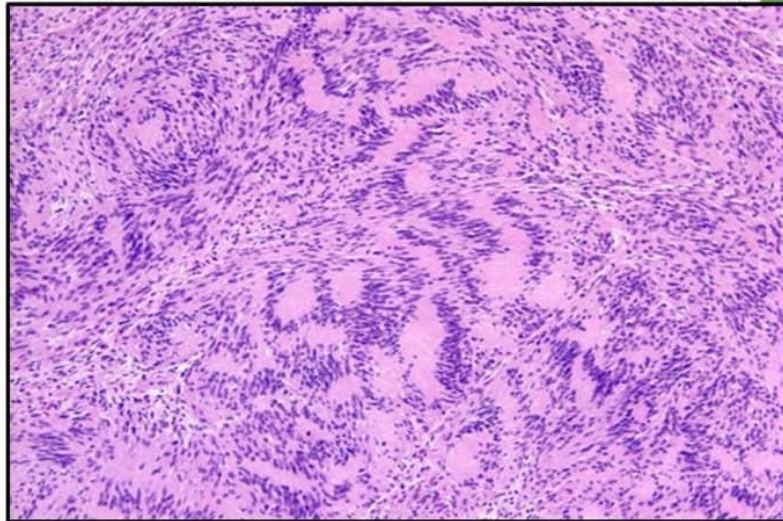
2)ANS:

Parkinson disease



3)ANS: Verocay bodies

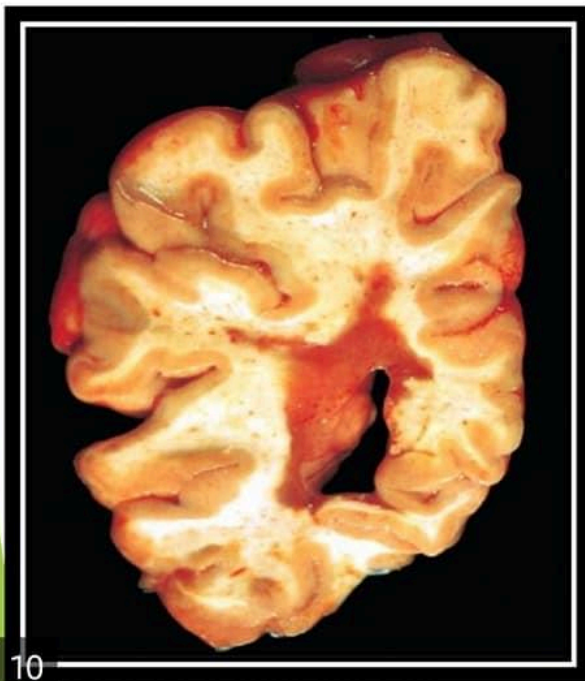
Tumor cells aligned in palisading rows → Verocay bodies:



30

4)ANS: Multiple sclerosis

Multiple sclerosis



10

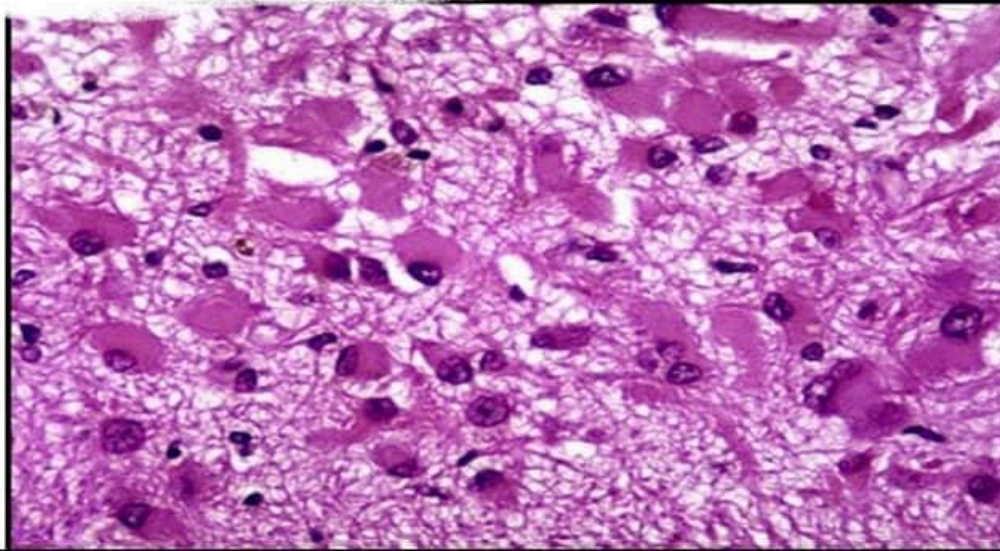
A white matter disease (multiple sclerosis).
Lesions → plaques: discrete, slightly depressed, glassy-appearing, and gray in color, and commonly near the ventricles



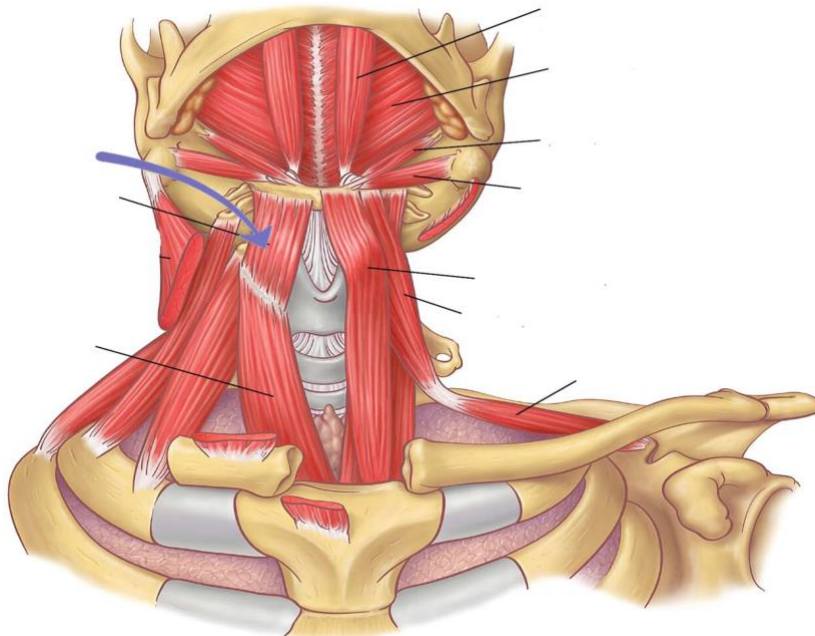
10

5) ANS:

gemistocytic astrocyte),

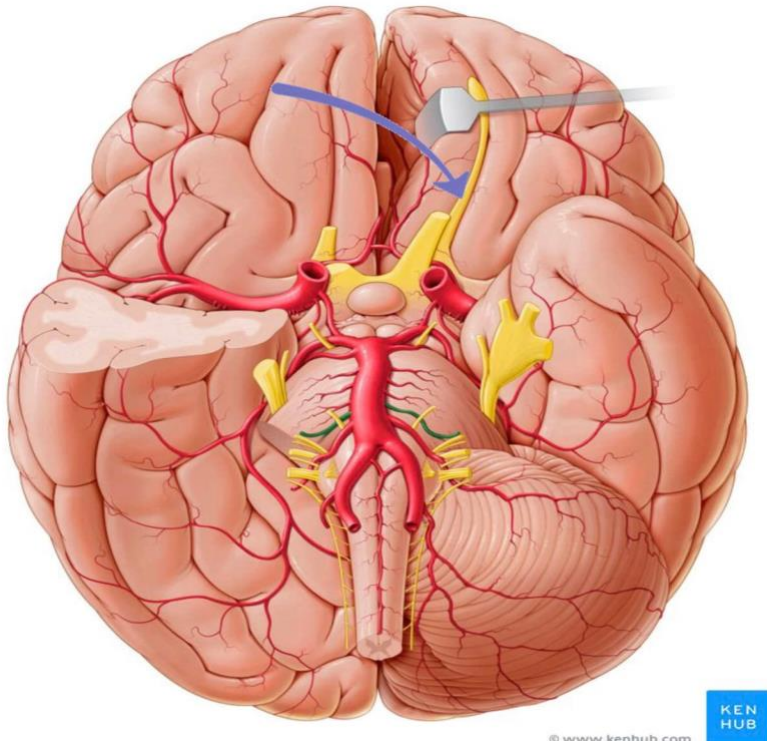


6) Name of the muscle which supplied by (C1) through hypoglossal nerve.

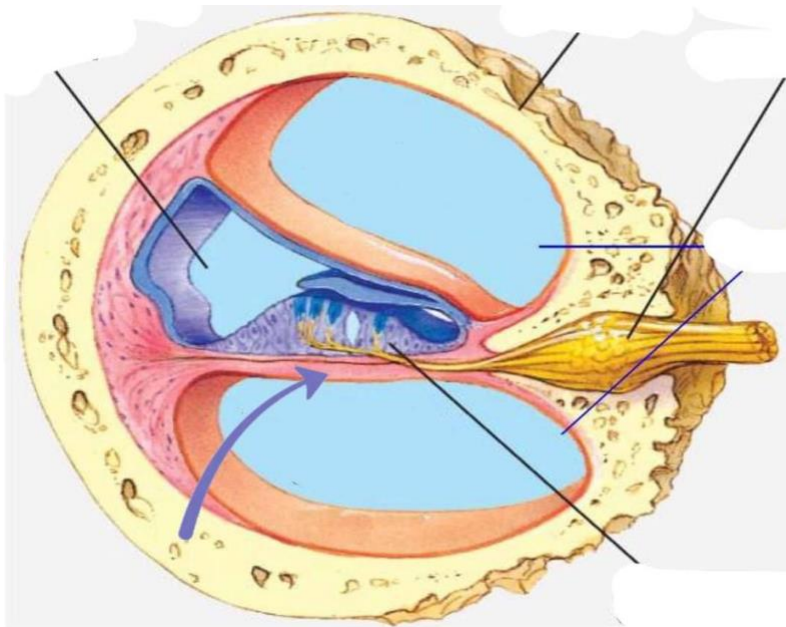


7)The arrow pointed to:

ANS: Olfactory TRACT

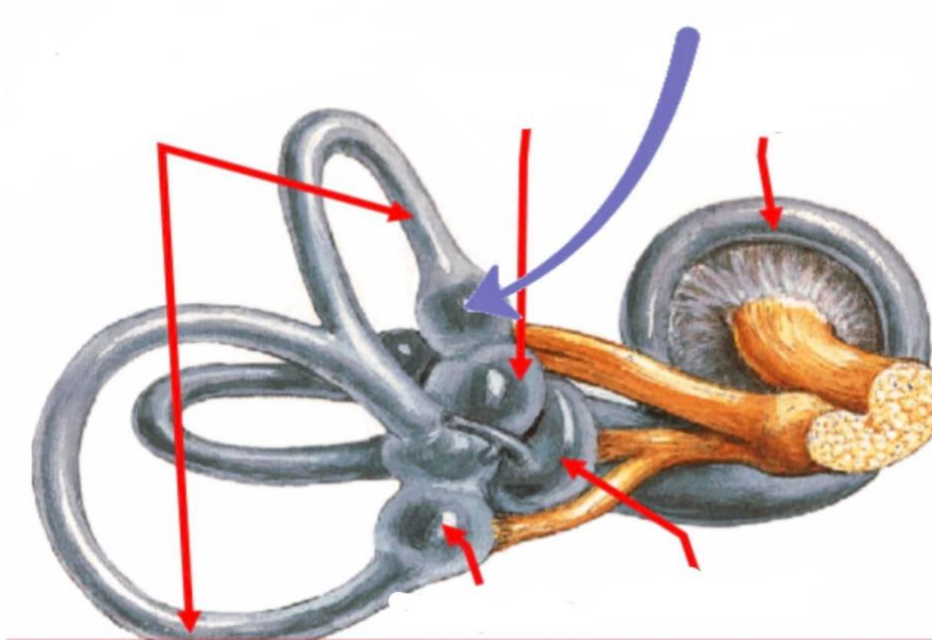


8)The arrow pointed to: Basilar membrane



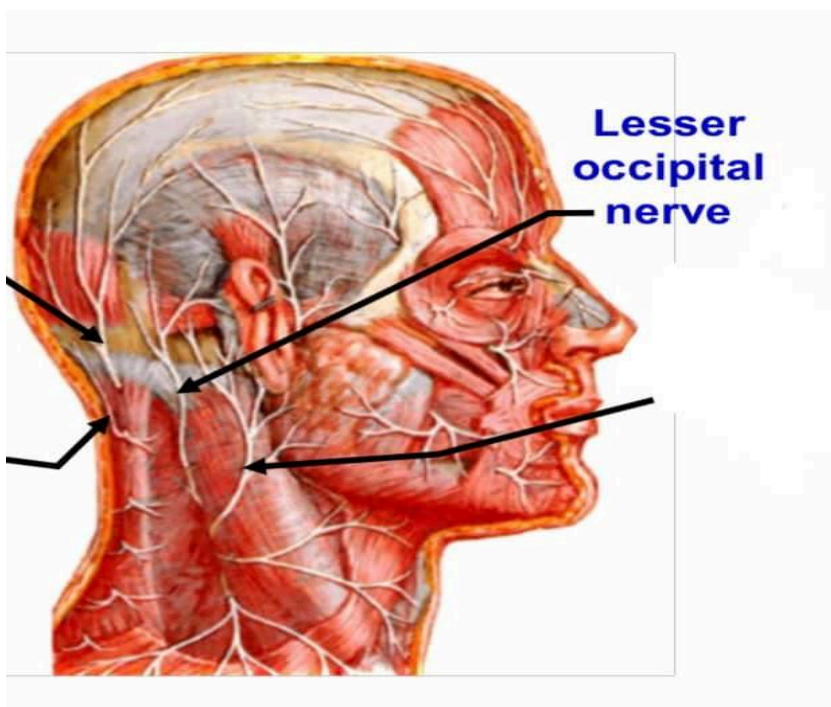
9)The arrow show:

ANS: Ampulla of anterior semicircular duct

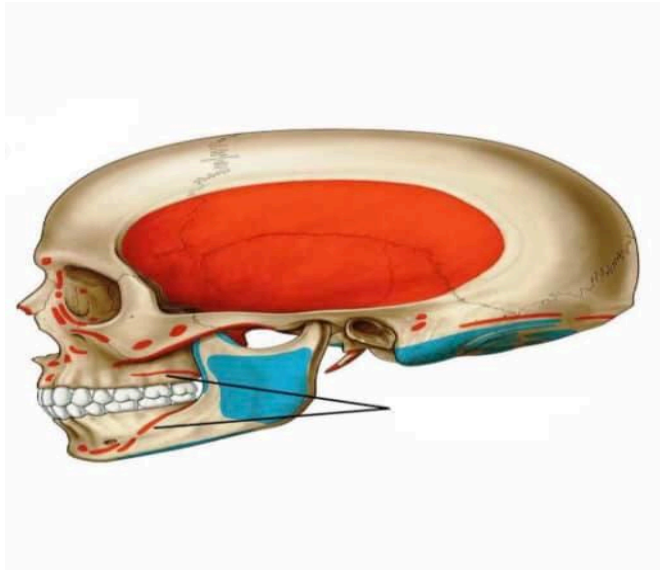


10)The arrow pointed to?!

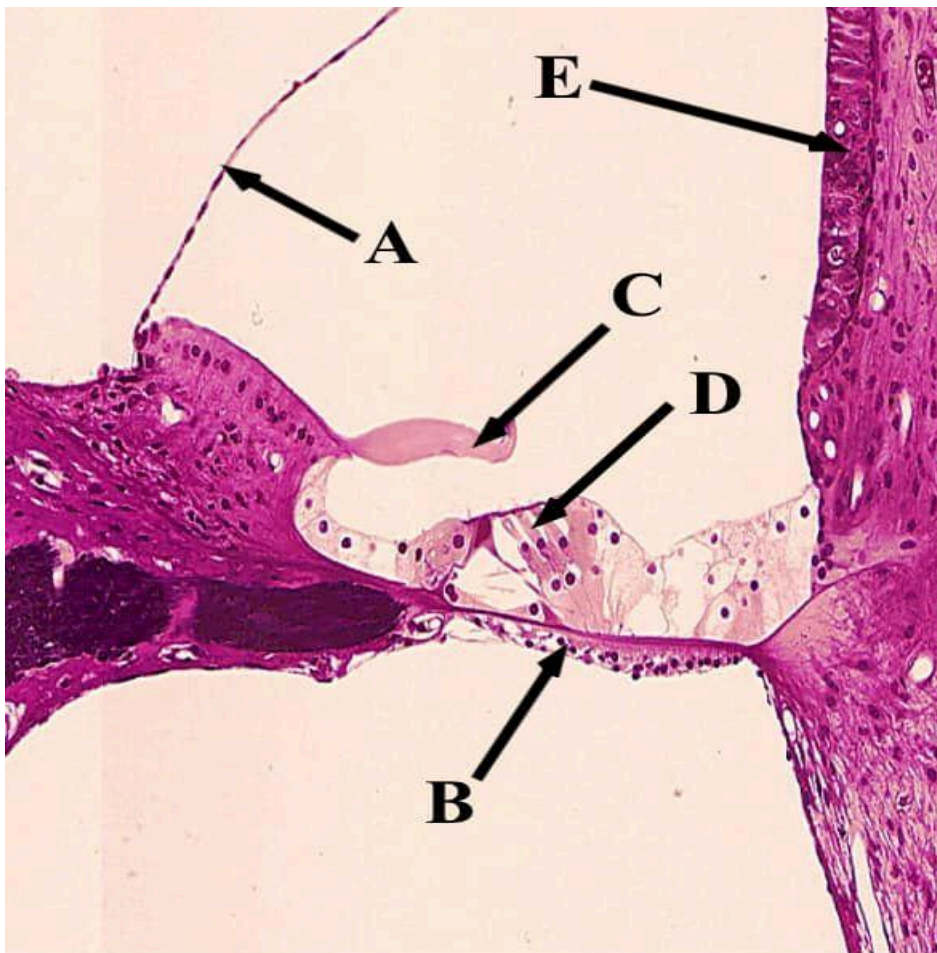
ANS:



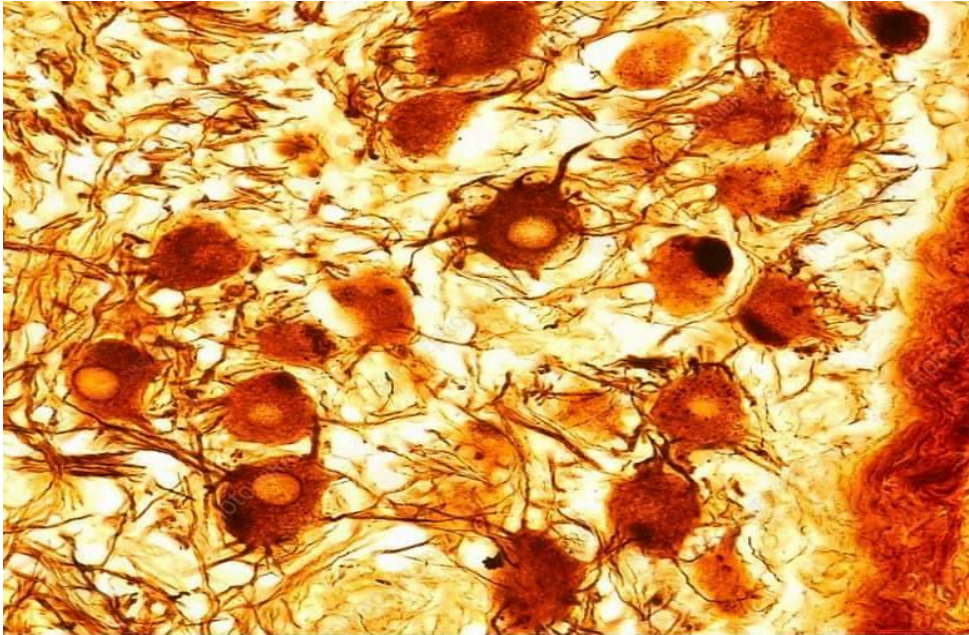
11) Origin of buccinator



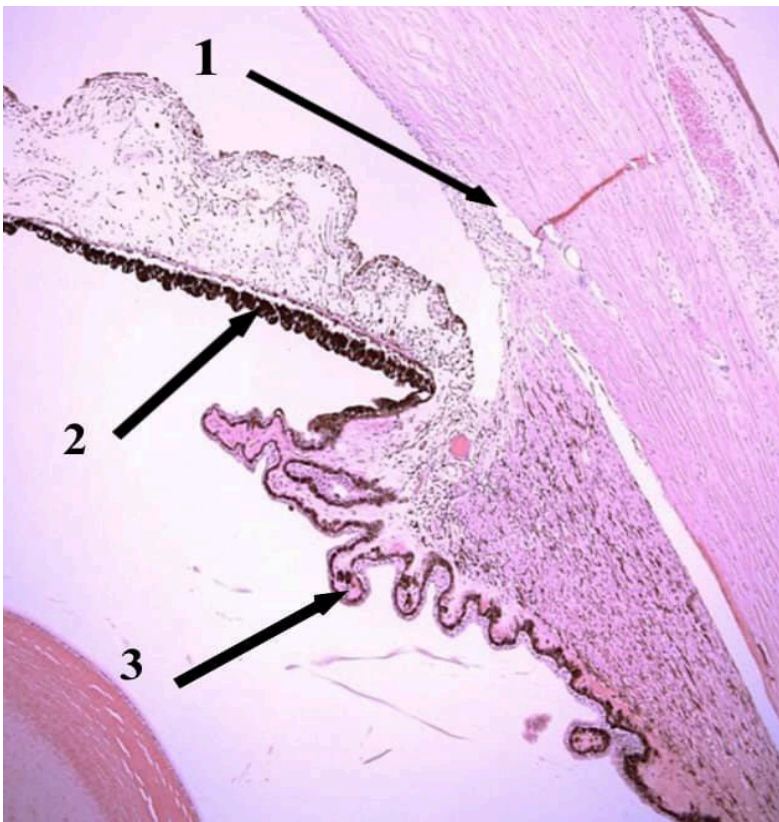
12) D?!



13)ANS: Sympathetic ganglion



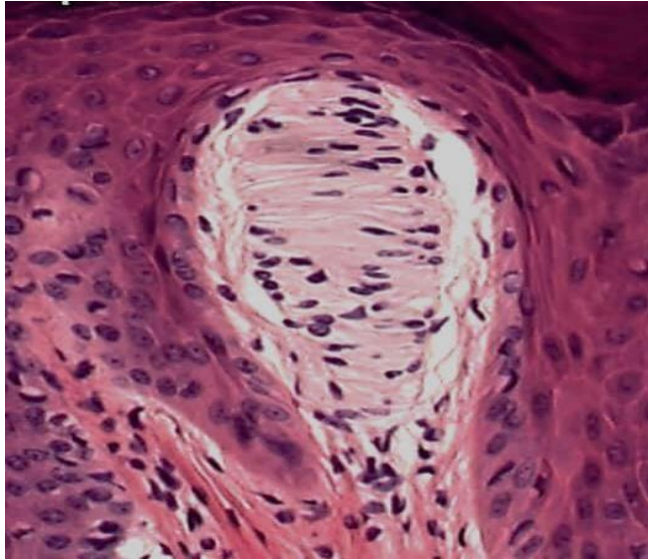
14) 2?! Pigmented epithelium of lower surface of iris



15) Choices: Myoepithelial cell

Stellate cell

Schwann cell



1- Meissner's corpuscles

- Oval shape, encapsulated structures present in the dermal papillae (**deep**) of skin that is especially sensitive such as tips of fingers (Hairless skin)
- They detect **light touch** (mechanoreceptors)

The diagram illustrates the layers of the skin: Epidermis and Dermis. It shows various sensory receptors: Merkel's disk (in the epidermis), Meissner's corpuscle (in the dermal papillae), Ruffini ending (in the dermis), Pacinian corpuscle (deep in the dermis), a Nerve (crossing the layers), and a Krause end bulb (in the dermis).

- The corpuscle is formed of transversely arranged **modified Schwann cells**. Collagenous fibers anchor the corpuscle to the dermo-epidermal junction
- The **sensory nerve fiber** enter the corpuscle **myelinated** then lose its myelin & spiral up between the cells until it ends at upper end of the corpuscle

This detailed diagram shows a cross-section of a Meissner's corpuscle. It is located within a dermal papilla. The structure consists of a capsule containing a spiral terminal of an afferent axon, surrounded by tortuous Schwann cells.

A small inset image shows a microscopic view of a Meissner's corpuscle, highlighting its characteristic structure and location within the dermal papillae.

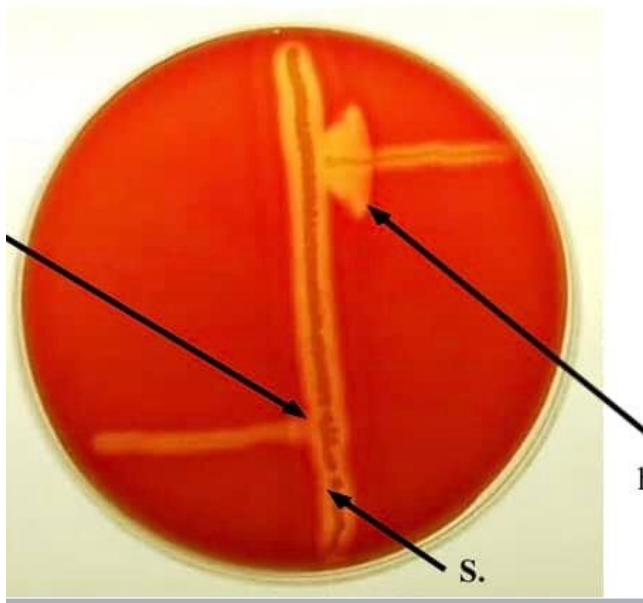
16) causative microorganism:



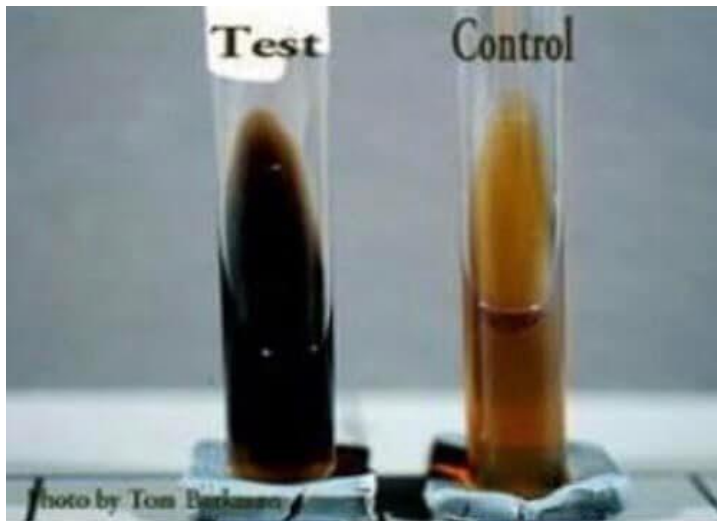
17) What is wrong about this vaccine:



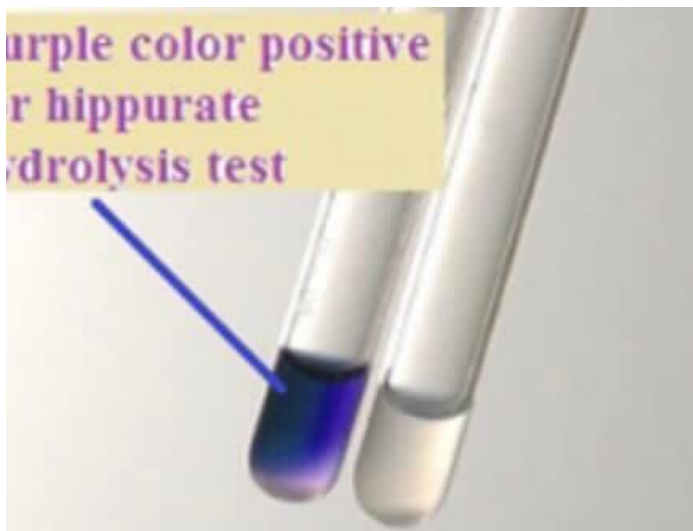
18) Name this test: Camp test



19)ANS: Bile Esculin test

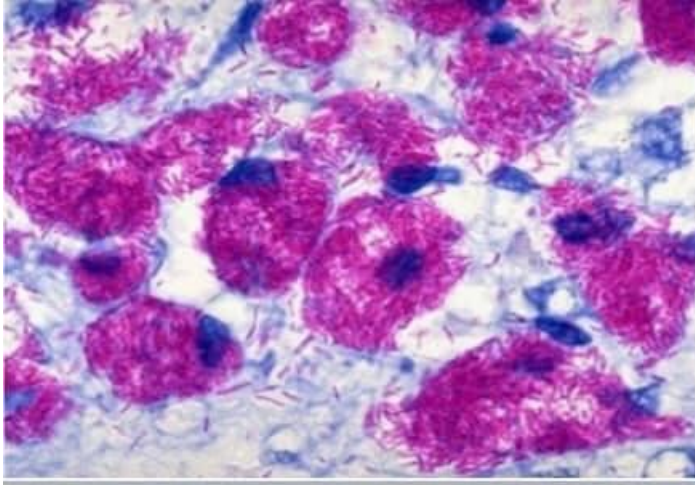


20)ANS: Ninhydrin reacts with "glycine"



21)WRONG:

ANS: Ziehl-Neelson method: confirm the diagnosis of tuberculoid leprosy



22) صيغة السؤال مش موجودة (22)

الجواب: لأنه بنخفف السم لأقل من 1 نانوغرام



23) Visual acuity 6/60 means that:

ANS: Patient can see at 6 meter distance what normal person can see at 60 meter.

24) Ophthalmoscope used to examin:

ANS: Fundus

25) Each one of the following related to conductive deafness except?

ANS: Positive rinne's test

26) Nerve deafness in right ear means?

27) Better sound in left ear?!