

PNS- LAB

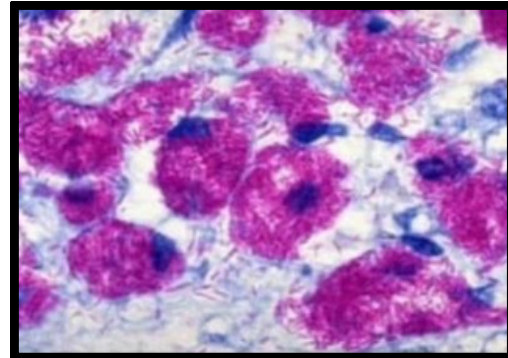
Archive

Rouh lab

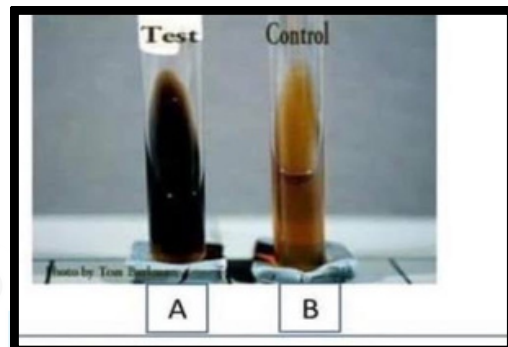
Done by:
ajyad
alqawabaa

PNS-Micro Lab

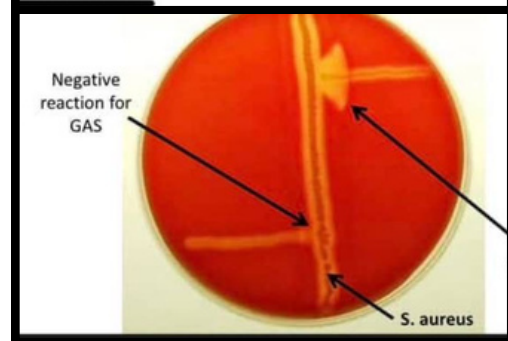
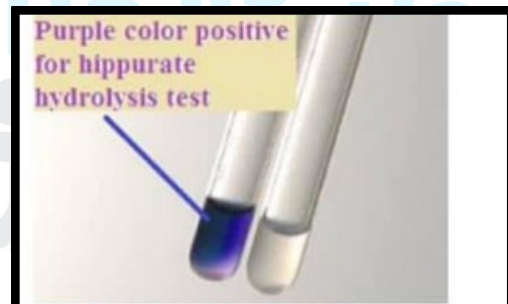
Test for ?



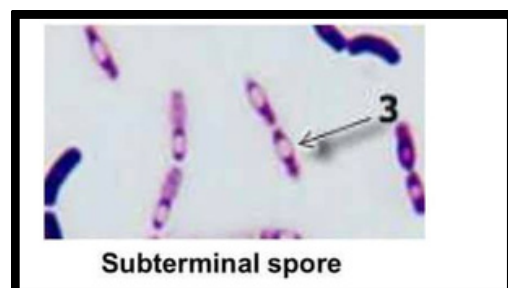
Name of the test ?



Name of the test?
hippurate



Related to?



PNS-Micro Lab

Diganosis for?

Related to?

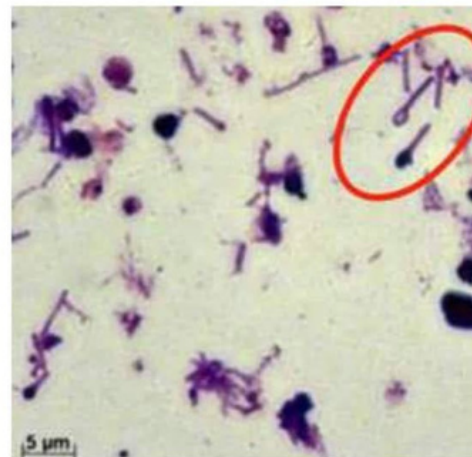
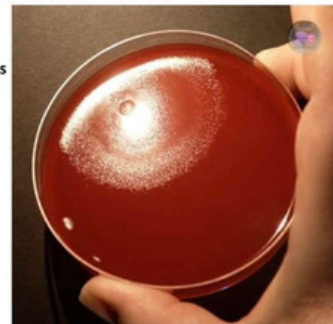
We consider lepromin test positive if the lesion is more than ?

10

صورة اوضح للمايكرو واجوبتهم

Diagnosis of Tetanus

Culture of *C. tetani* produces a thin transparent film of swarming growth on the agar surface.



INTRADERMALLY
USES
- CLASSIFY
- PROGNOSIS
- RESISTANT

FIGURE 1. Response to Nitroide antigen C12-001 at day 25

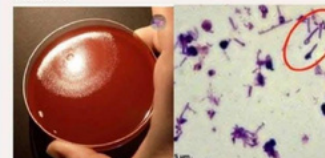
Leprosy



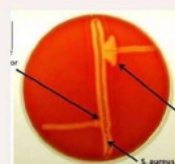
Botulism



Tetanus

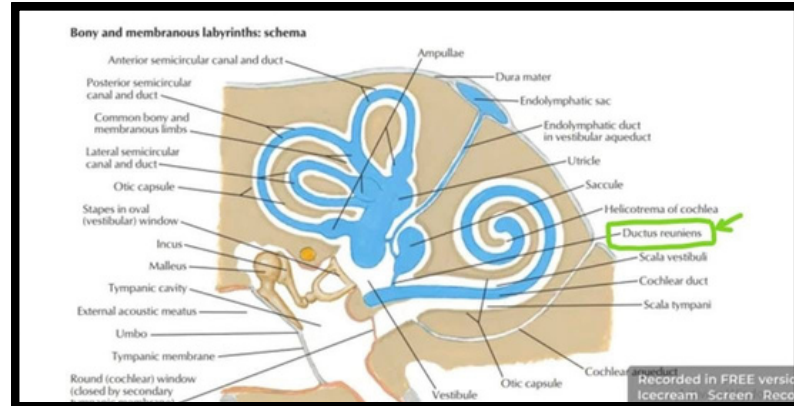


CAMP test

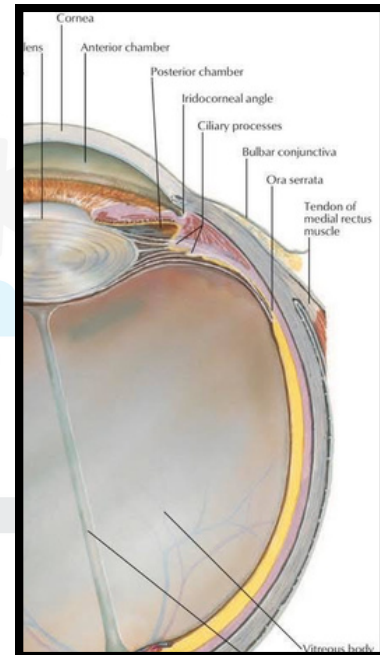


PNS-Anatomy Lab

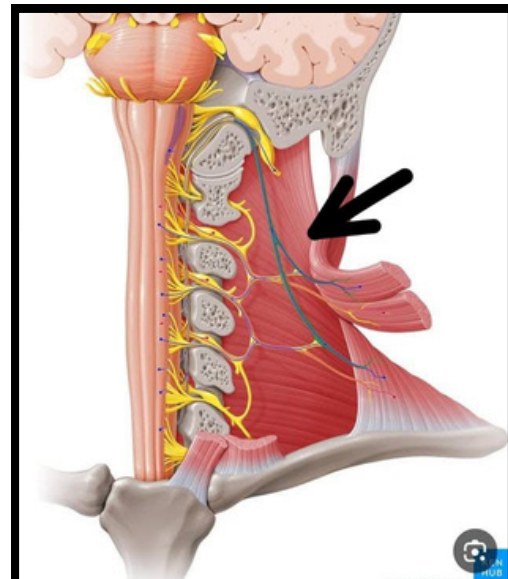
مأشر على ال
ductus
reuniens



مأشر على ال
ora serrata

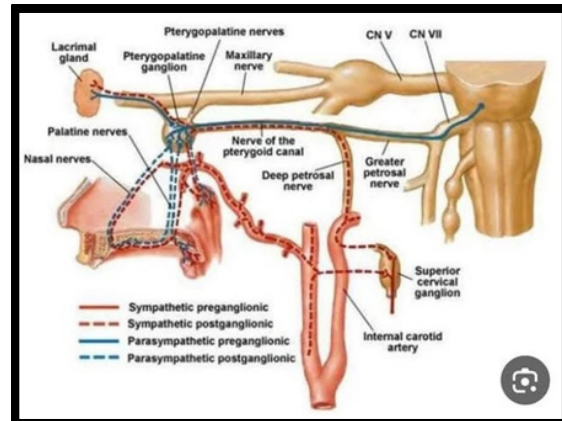


Accessory nerve



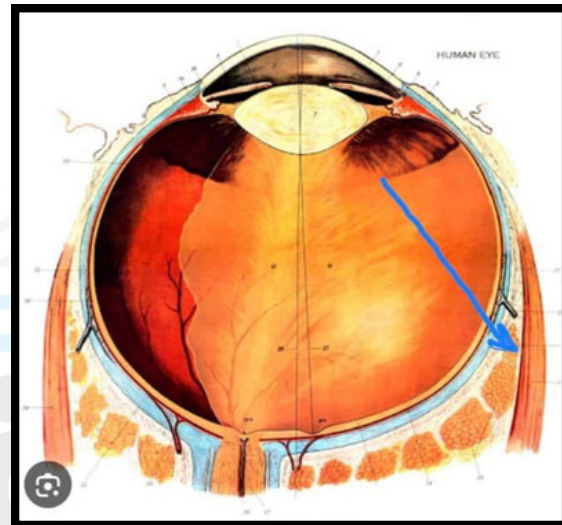
PNS-Anatomy Lab

Deep petrosal nerve



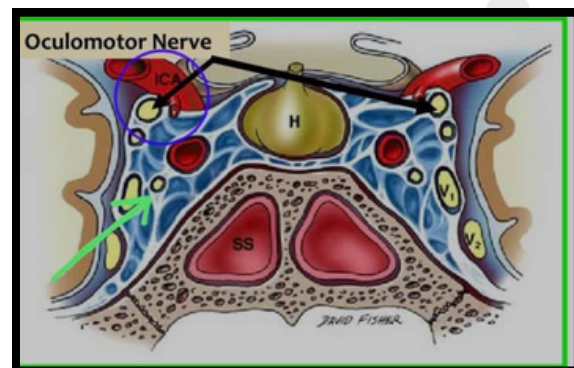
the nerve supply for this muscle?

Abducent



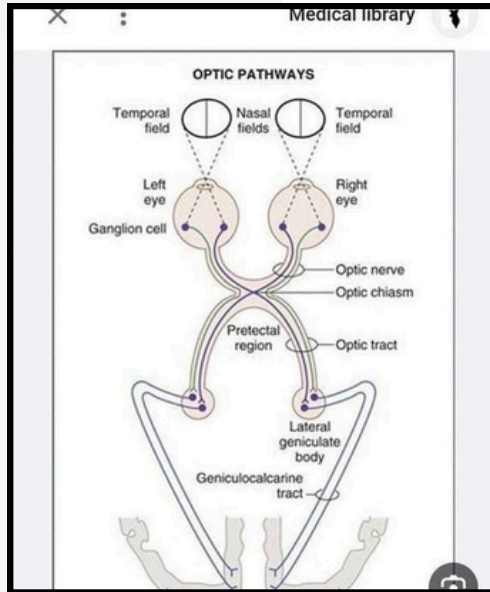
The green arrow?

Trochlear

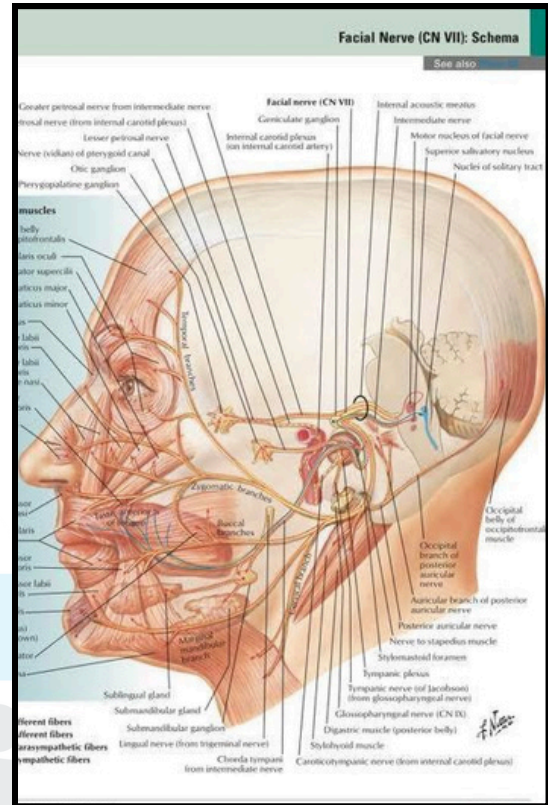


PNS-Anatomy Lab

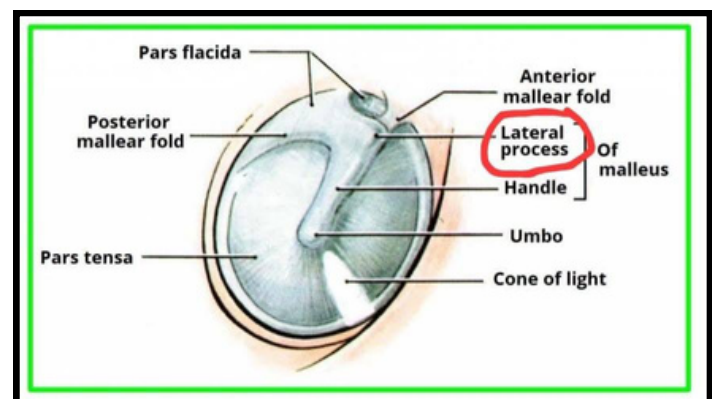
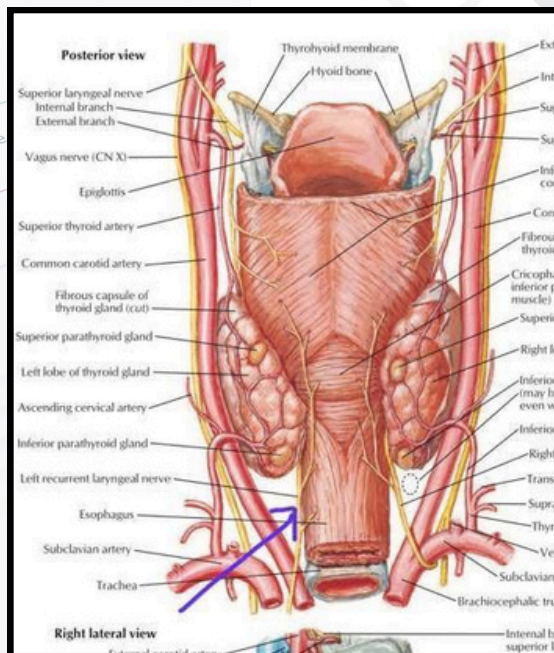
Lateral geniculate body



stylemastoid foramen بده ال



شو المرض لو صار bilateral injury
 ✓ aphonia
 hoarseness and dysphonia
 drooping of the shoulder



PNS-Physio Lab

1- Cortical neurons "Blobs" are concerned with ?

- a- Auditory pathway.
- b- Color vision.
- c- Pyramidal tract.
- d- Extra-pyramidal tract.
- e- Discrimination of sound pitch.

Ans: b

2- Visual Acuity 6/24 means that ?

- a- The subject is sitting at 24 meters from Snellen chart.
- b- The normal eye could see clearly at 6 meters what the subject could see clearly at 24 meters.
- c- It is better than 6/9.
- d- It is better than 6/60.
- e- It is better than 6/12.

Ans: d

3- In performing color vision test, Ishihara test?

- a- Rods are concerning with color perception.
- b- Optic disc is the most sensitive are detecting color vision.
- c- Both rods & cones are concerned with color perception.
- d- 4 types of Cones are concerning with color perception.
- e- 3 types of cones are concerning with color perception.

Ans: e

4- Reduced Rinne Positive, means that the patient could have --.

- a- Injury of Middle ear.
- b- Obstruction of Eustachian tube.
- c- Conductive deafness.
- d- Ruptured eardrum.
- e- Perceptive deafness.

Ans: e

5- Nerve deafness is caused by all the followings EXCEPT?

- a- Tonsillitis
- b- Meniere's disease
- c- CO poisoning
- d- Meningitis.
- e- Auditory cortical area damage.

Ans: a

PNS-Physio Lab

6. In performing Schwabach test, if the examiner hears after the patient stops, the patient could have :

- a- Conductive deafness.
- b- Perforated eardrum.
- c- Closed Eustachian tube.
- d- Nerve deafness.
- e- Wax obstruction of external auditory canal.

Ans: d

7- Rinne's positive in Rt. Ear, means

- a- Conductive deafness in Rt. Ear
- b- Nerve deafness in both ears
- c- Nerve deafness in Left ear
- d- Normal Rt. Ear
- e- Normal Lt. ear

Ans: d

8- In conductive deafness, all are correct EXCEPT?

- a- May be caused by otosclerosis.
- b- May be caused by obstruction of Eustachian tube.
- c- Positive (+ ve) Rinne test is present.
- d- Bone conduction is better than air conduction.
- e- Otitis media may be the cause.

Ans: c

38- In conductive deafness of Left ear, Weber's test is

- a- Better in Lt. ear than Rt. One.
- b- Equal in both ears.
- c- Better in Rt. ear than Lt. One.
- d- Comparison of air and bone conduction occurs.
- e- Comparison of bone conduction of examiner and patient occurs.

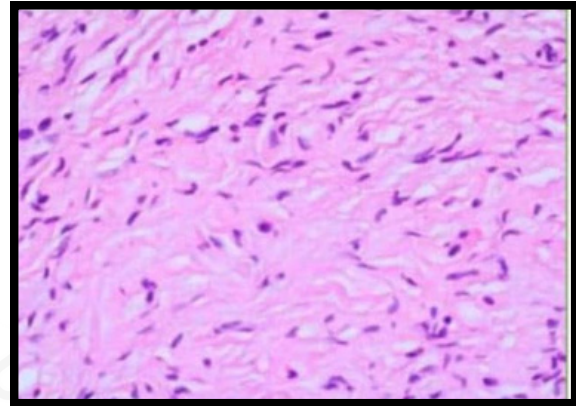
Ans: a

PNS-Patho Lab

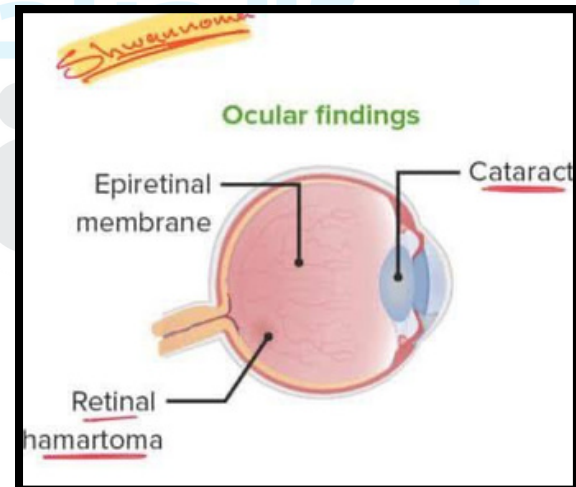
retinal hamartoma



NF1



Shwannoma



vasculitis



PNS-Patho Lab

for the quiescent
histopathology What is the
most type of cells can be
seen?

gliolastrocyte



in which chromosome
abnormality the following
can be seen ?

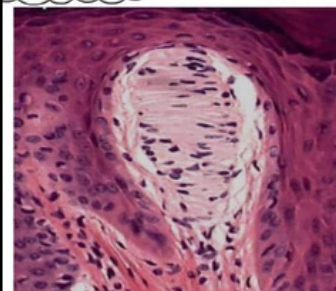
chromosome 4



15) Choices: Myoepithelial cell

Stellate cell

Schwann cell



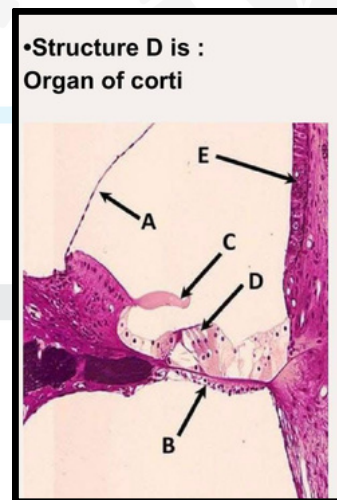
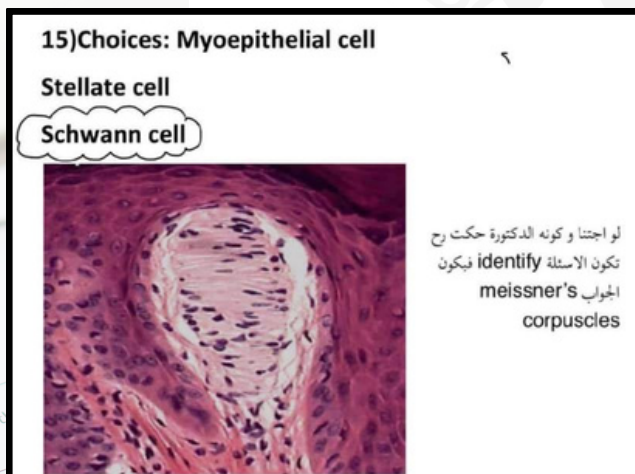
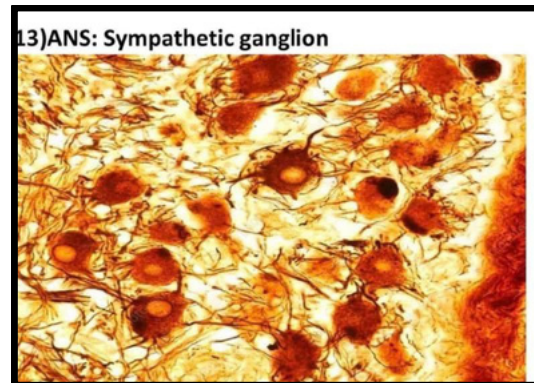
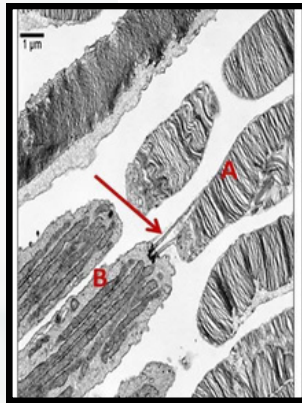
لو اجتئا و كونه الدكتور حكت رج
تكون الامثلة identify فيكون
الجواب meissner's
corpuscles

PNS-Histo Lab

ماشره ع a

a.membranous disk

b .collagen



Iris

