

THE TONGUE

EXTRINSIC MUSCLES OF TONGUE



Lec 2	Origin	Insertion	actions
Genioglossus	Superior genial tubercle	whole length of lower surface of tongue -reach hyoid bone	one muscle Protrudes tongue to opposite side two muscle Protrudes tongue directly forward by its tone prevent backward displacement of tongue during sleep
Styloglossus	Styloid process	Side of tongue	Retracts and elevates tongue
Hyoglossus	body & greater horn of hyoid bone	Post. 1/2 of side of tongue	Depresses tongue during speech , chewing , singing
Palatoglossus	inferior surface of palatine aponeurosis	side of tongue (at junction between ant 2/3 and post. 1/3)	Elevates tongue depresses palate

Nerve supply :

Motor: all muscles (extrinsic and intrinsic) are supplied by hypoglossal nerve except palatoglossus which is supplied by cranial part of accessory n through vagus.

Sensory:

-Ant. 2/3: General sensation:- lingual nerve

taste sensation:- chorda tympani n.

Post. 1/3: general & taste sensation by glossopharyngeal.n

-Most lower part of pharyngeal part: by vagus n

N.B.: - vallate papilla are supplied by glossopharyngeal nerve

Blood supply :

Arterial supply:- Mainly by lingual artery

Venous drainage: it is drained by 2 veins.

1 -Deep lingual vein:

2-Dorsal lingual vein:

Both veins end in IJV

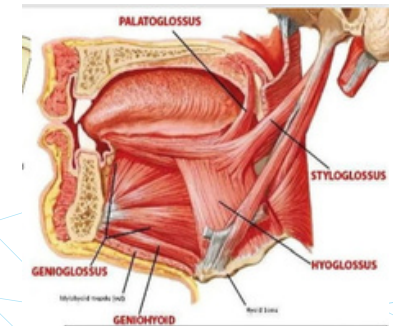
Lymphatics: it drains to

-Tip:- to Submental lymph nodes.

-Sides :- to Submandibular L.N. of the same side

-Central part :- to Submandibular L.N. of both sides

Posterior part:- to Deep cervical L.N



done by : Aya Ayman