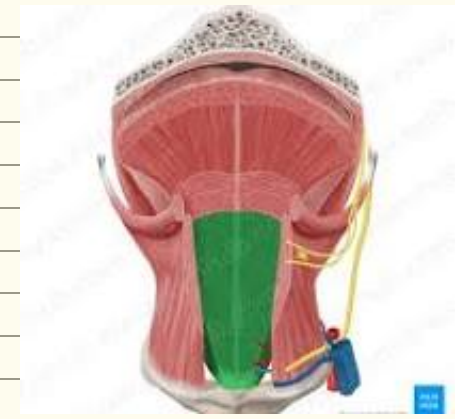
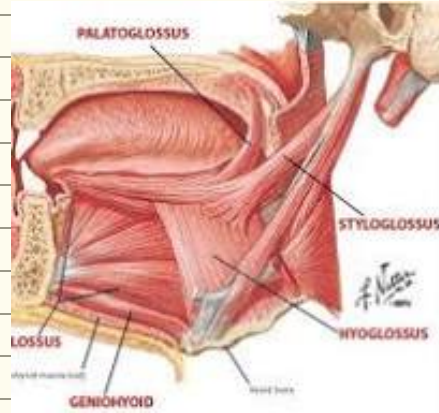


Genioglossus

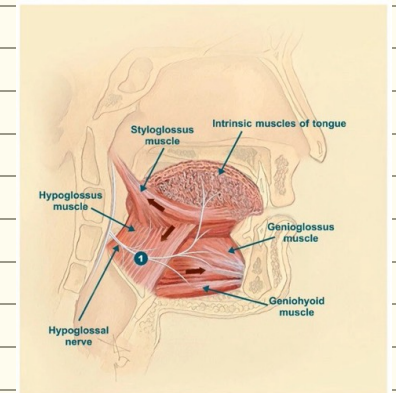
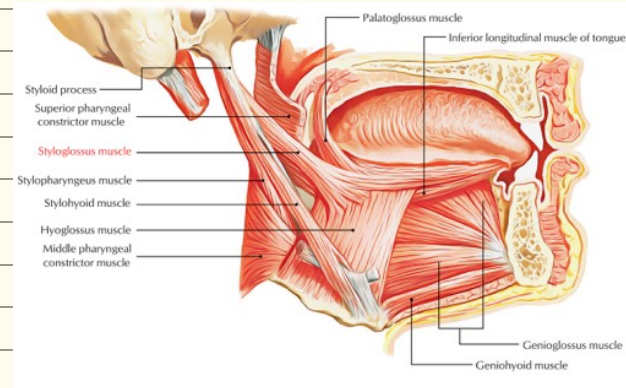
O: sup. genial tubercle. I: whole length of lower surface of tongue, + reach hyoid bone.



A: one m: protrudes tongue to opposite side. two m: " " directly forward.

Styloglossus

O: styloid process I: side of tongue.



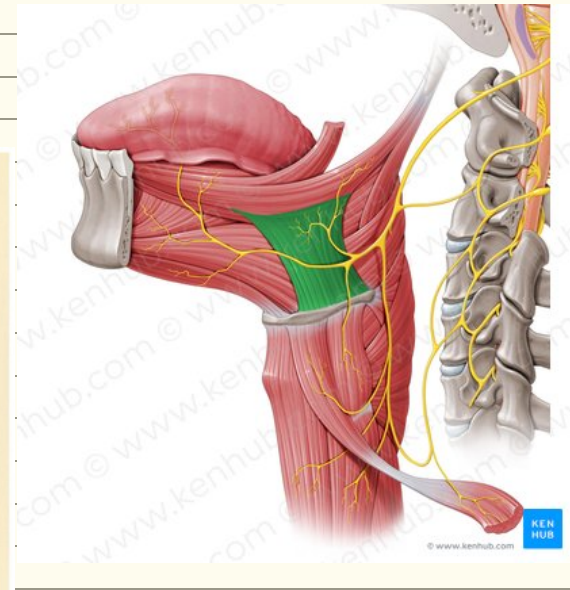
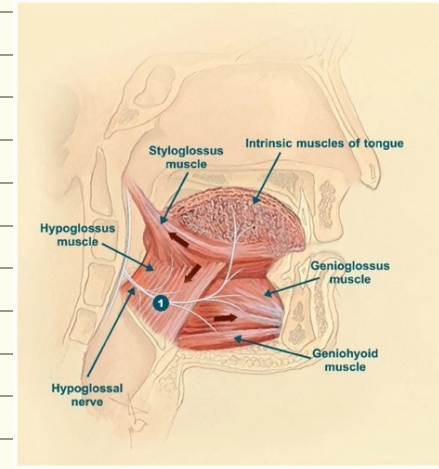
A: Retracts and elevate tongue.

Hypoglossus

I: post. 1/2 of side of tongue.

O: body + G. horn of hyoid bone

A: Depresses tongue during - speech
- Chewing
- Singing.



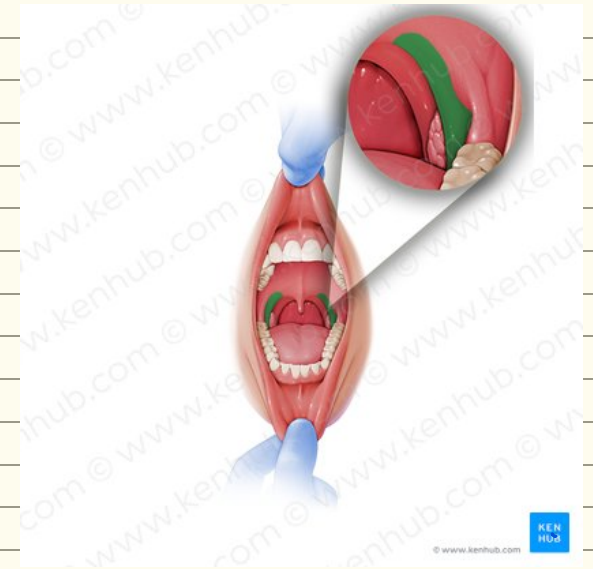
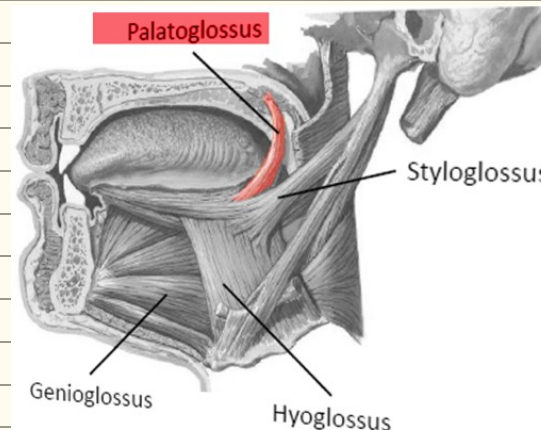
Palatoglossus

I: side of tongue. (at junction) ant. 2/3 and post. 1/3)

O: inf. of palatine aponeurosis.

A: - elevates tongue.
- depresses palate.

* Motor supply: Cranial part with accessory n through vagus.





To superior deep cervical lymph nodes

To submandibular lymph nodes of both sides

To submandibular lymph nodes

To submental lymph nodes

es



