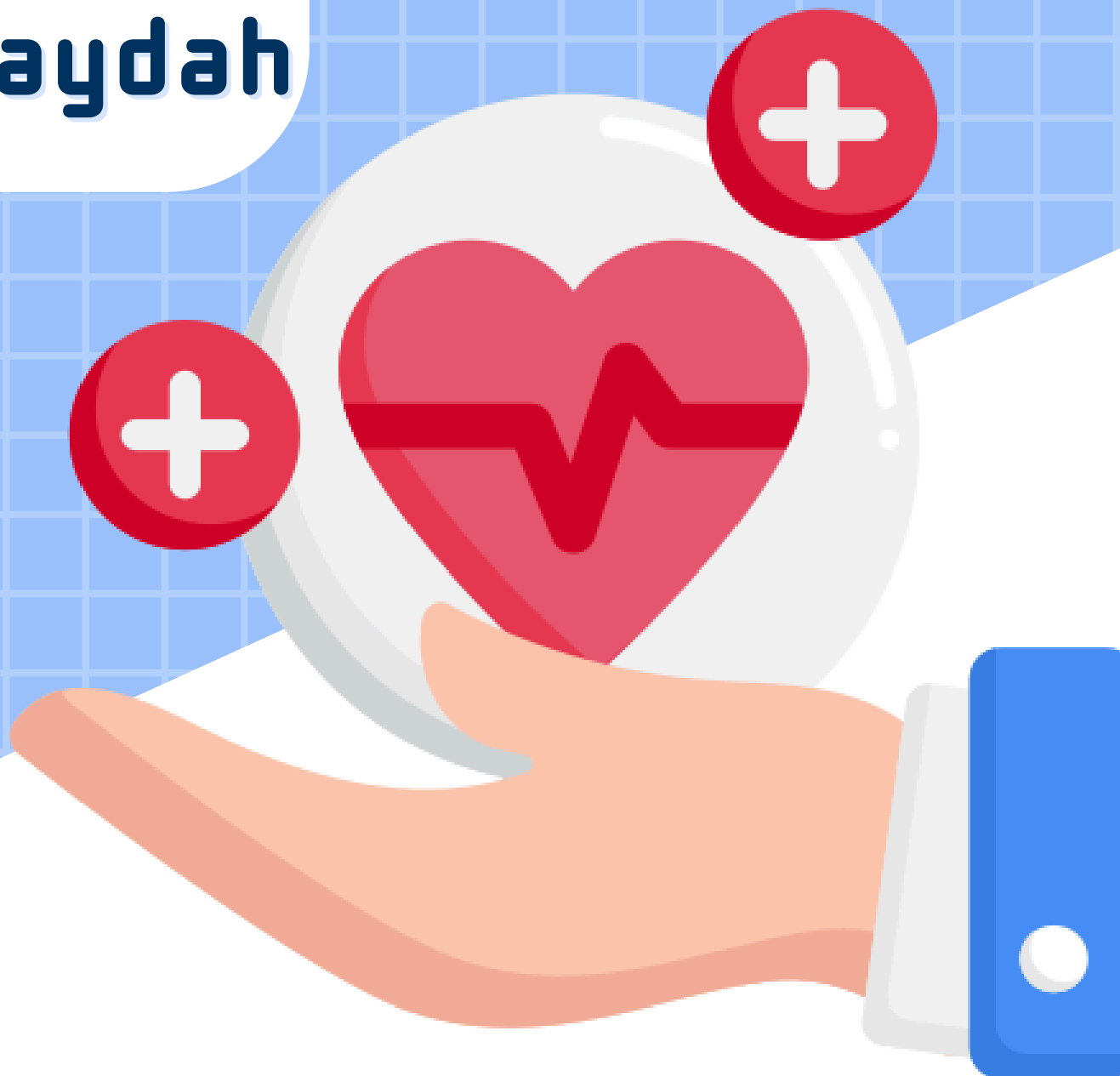


OH MID

2021

Done by:

**bayan mahmoud
razan albayaydah**



1.Any restriction or lack of ability to perform an activity in the manner or within the range considered normal for a human being is known as

- A. Impairment**
- B. Disability**
- C. Handicap**
- D. Injury**
- E. Accident**

Answer: b

2.Examining a patient with sensorineural hearing loss using Weber's Test. The patient will detect the vibrating waves in

- A. in the affected ear**
- B. in the opposite ear**
- C. in both ears**
- D. in the tuning fork**
- E. on the forehead**

Answer: b

3.In Rinne's Test the tuning fork is placed on the

- A. forehead**
- B. mastoid bone**
- C. hip bone**
- D. elbow joint**
- E. tip of the mandible**

Answer: b

4.A community in Town X were exposed to a radiation leak from a nearby nuclear plant, this is an example of

- A. Equal exposure**
- B. Timed exposure**
- C. Stochastic exposure**
- D. Non-stochastic exposure**
- E. Temporary exposure**

Answer: c

5.Regarding Rehabilitation all is true except:

- A)psychotic,social,recreation service**
- B)Diagnosis**
- C) Vocational assessment and attitude exploration**
- D)placement in suitable job**
- E)family planning**

Answer: E



لَنْ يَخْذَلَ اللَّهُ عَبْدًا جَفَّ قَلْبُهُ بِالدُّعَاءِ.

6.General criteria for identification and recognition of occupational diseases except :

- A)the exposure temporality
- B)The clinical and pathological presentation of occupational disease(OD) is often different to that of non OD
- C) removing a specific hazard or reducing a specific risk from the working environment or work activity eliminates the development of a specific disease
- D)disease occurs among a group of exposed persons with a frequency above the average morbidity of the rest of the population

Answer: b

7.Father of Occupational Medicine

Answer: Bernardino Ramazzini

8.The promotion and maintenance of the highest degree of physical, mental and social wellbeing of all workers in all occupations

- A)occupational health
- B)occupational medicine
- C) industrial medicine
- D)occupational disease

Answer:a

9.Not related to hygienist:

- A)design and implementation of health program
- B)knowing characteristics of industrial process
- C)using instruments to measure , analyse hazard material in environments
- E)evaluate control measures in working environments

Answer:A

10.Periodic examination:

- A)primordial prevention
- B) primary prevention
- C)secondary prevention
- D)tertiary prevention
- E) specific prevention

Answer:b

11.Periodic examinations:

- A)screening exam
- B)past and present occupation should be recorded

Answer:A

لَنْ يَخْذَلَ اللَّهُ عَبْدًا جَفَّ قَلْبُهُ بِالدُّعَاءِ.



12.Source of radiation sharing in environmental ionizing radiation:

- A. Microwave**
- B. Eletrical lights**
- C. Radon**

Answer:c

13.Loss of sweating and heat regulating mechanism indicates:

- A. Heat syncope**
- B. Heat cramps**
- C. Heat exhaustion**
- D. Heat stroke**
- E. Frostbite**

Answer:d

14.The occupation or person who is not at risk of anthrax infection:

- A. Family members of farmer**
- B. Butcher**
- C. Military personnel**
- D. Medical staff**
- E. Postal worker**

Answer:d

15.The material that emits highest levels of ionizing radiation is:

- A. Telephone**
- B. Remote control**
- C. Magnatic resonance imaging scanner**
- D. Radio**

Answer:c

16.A normal person hear sounds pressure from finnest level to noise in range of:

- A. 20Hz - 20000HZ**
- B. 20db-20000db**
- C. 0db - 120db**
- D. 0Hz - 120Hz**
- E. 80mmHg - 120mmHg**

Answer:c.

لَنْ يَخْذُلَ اللَّهُ عَبْدًا جَفَّ قَلْبُهُ بِالدُّعَاءِ.



17. Brucellosis routes of transmission include all of the following except:

- A. Eating unpasteurized cheese**
- B. Person to person transmission**
- C. Inhaling aerosols**
- D. Eating raw contaminated vegetables**
- E. Perinatal transmission**

Answer:b

18. Which of the following is not from engineer prevention activities?

- A. Good ventilation**
- B. proper disposal of hazard material**
- C. installation of negative pressure**
- D. education and training working comprehensively**
- E. prevention loss of effort and time**

Answer:d

19. The weber test for opposite ear :

- a-normal ear**
- b- affected ear**
- c-forehead**

Answer:

20.tissue most radiosensitive !!

- a-high immunity**
- b-high proliferation**

Answer:b

21.Objectives of Occupation Health Program except

- a-Keep good health recording system**
- b- Facilitating the placement of workers according to their physical, mental and emotional capacities.**
- c- Assuring an adequate medical care and rehabilitation of occupationally diseased and injured workers.**
- d- Protection of the general environment of the community**

Answer:a

22.sounds below 20 hz called

- a-ultrasound**
- b-infrasound**
- c-infrared**

Answer:b



لَنْ يَخْذَلَ اللَّهُ عَبْدًا جَفَّ قَلْبُهُ بِالدُّعَاءِ.

23.All are penetrating radiation except

- a) Neutron
- b) Proton
- c) Beta particles
- d) Gamma rays
- e) Uranium

Answer:e

24.Maximum radiation exposure limit in a single year is

- a-50mSv
- b-100
- c-150

Answer:a

25.All tissues are the most radio sensitive except

- a) reproductive
- b) Hematopoietic
- c) Pancreas
- d) Skin
- e) Lens of the eye

Answer:c

26.The duties of the Occupational nurse are all the following, EXCEPT?

- a) Assisting the physician in providing medical services,
- b) Assisting in supervising the work's environment
- c) Deciding the rehabilitation of the diseased workers
- d) Assisting the physician, in the health education of the workers
- e) keeping the medical records

Answer:c

27.Body temperature processes function best when ambient temperature is

- a-21-23c
- b-20-25c

Answer:a

28.The body's heat regulatory mechanism stops functioning and the main avenue of heat loss is blocked

- a-syncope
- b- stroke
- d-cramps

Answer:b

لَنْ يَخْذَلَ اللَّهُ عَبْدًا جَفَّ حَلْقُهُ بِالْذُّعَاءِ.



29. Where does the nitrogen in nitrogen narcosis goes?

- A. kidney**
- B. liver**
- C. brain**

Answer: c

30. All of the following happens in nitrogen narcosis except?

- A. loss of consciousness**
- B. lack of muscle coordination**
- C. loss of intellectual thinking**
- D. aggressive behavior**

Answer: d

31. Definition of Latency?

- A. period of time from exposure to start of disease**
- B. period of time of incubation period**

Answer: a

32. All are ways of heat transfer from worker to his surroundings except?

- A. convection**
- B. radiation**
- C. evaporation**
- D. conduction**
- E. combustion**

Answer: e

33. LD50 stands for?

- A. median dose at which 50% of test animals will die v**
- B. maximum dose**
- C. mean dose**

Answer: a.

34. All of the following are functions of risk except?

- A. Hazard**
- B. Exposure**
- C. Dose**
- D. Duration**
- E. Effect**

Answer: e

35. Rinne's test is performed over

- a. Mastoid bone**

Answer: a

لَنْ يَخْذَلَ اللَّهُ عَبْدًا جَفَّ حَلْقُهُ بِالدُّعَاءِ.



36. According to Boyle's law, when pressure on a gas increase?

a. Volume decreases

Answer:a:

37. In occupational health. the most effective control measure in the hierarchy of control is?

A. Medical control

B. Hygienic control

C. Personal control

D. Administrative control

E. Engineering control

Answer:e

40. Following are the modes of infection in Anthrax EXCEPT?

A. Gastro intestinal ingestion of a contaminated

B. Respiratory inhalation

C. Cutaneous skin contact

D. injection

E. direct person to person transmission person

Answer:e

41. Protecting workers against biological hazards. the first line of defence is?

A. Personal hygiene

B. Personal protective equipment

C. Engineering controls.

D. Administrative controls

E. Adequate supervision

Answer :c

42. The ambient pressure Wthh we normally reside is defined (at sea level) as?

A. One atmosphere of barometric pressure (10 mmHg at 100 meter of sea water)

B. One atmosphere of barometric pressure (100 mmHg at 10 meter of sea water)

C. One atmosphere of barometric pressure (33 mmHg at 30 meter of sea water)

D. One atmosphere of barometric pressure (150 mmHg at 2 meter of sea water)

E. One atmosphere of barometric pressure (760 mmHg at 10 meter of sea water)

Answer:e

43. All of the tollot

A. getting rid of biological hazards

B. prevent loss of time and effort

C. ventilation

D. negative pressure room

E. education

Answer:b



لَنْ يَخْذَلَ اللَّهُ عَبْدًا جَفَّ حَلْقُهُ بِالْذُّعَاءِ.

44. One of the following is not an activity of Hygienic prevention: Select one:

- A. Establishment of good ventilation"**
- B. investigating the cause of workers' absenteeism.**
- C. Provision of good sanitary facilities as washing, changing clothes**
- D. Supplying personal protective equipment (PPE)**
- E. Detection and evaluation of the environmental pollutants**

Answer: a

45. The occupational physician plays all the following roles, EXCEPT? Select one:

- a. Conducting a health education**
- B. Assessing the degree of any disability resulted from occupational diseases and injuries**
- C. Calculation of the required compensation for disability**
- D. Referring non-occupational chronic diseases to a specialist.**
- E. inspecting the different departments of the factory, periodically**

Answer: e

46. Engineering methods of prevention including all, EXCEPT?

- A. Substitution of hazardous substance**
- B. Enclosure, machine guarding**
- C. Mechanization of heavy work process**
- D. Isolation of hazardous process**
- E. Periodic inspection of the different departments of the factory**

Answer: e

47. All the following are the importance of keeping health record for each employee, EXCEPT?

- A. for detecting morbidity and/or mortality rates of a health problem**
- B. for the planning of industrial health program**
- C. for factory's budget estimation**
- D. for industrial health program evaluation**
- E. for detection of the trends of health and/or disease**

Answer: c

48. Definition of risk?

- a. The probability that harm will occur in the presence of Hazard**

49. Atmospheric pressure at 20 m under sea level?

3.3atm

50. A community in town X are exposed to nuclear leakage from the nuclear plant nearby, what is this type of exposure?

- A. Stochastic**
- B. Non-stochastic**
- C. Timed**

Answer: b

لَنْ يَخْذَلَ اللَّهُ عَبْدًا جَفَّ حَلْقُهُ بِالْذُّعَاءِ.



51.All of the following is non auditory effects of noise except :

- A.increase heart rate**
- B.Increase respiratory rate**
- C.Decrease of sleep quality**
- D.Increase in gastric mortality**
- E.Decrease in work performance**

Ans: d

52.Disability is :

Ans: Lack of ability to perform an activity in the optimum manner

53.All of the following is worker exposed to animal product except:

- A.Meat packer**
- B.Butchers**
- C.Cargo handler**
- D.Farmer**
- E.Pest control worker**

ans:e

54.All of the above are used for radiation treatment except:

Ans: Using radiation vaccine

55.All the following are criteria for identification of occupational diseases. EXCEPT

- A.The causal relationship is existing between a specific disease and specific exposure in a workplace**
- B.By removing or reducing a specific hazard from the working environment, elimination or reduction of specific disease development will be noted**
- C.Morbidity of the disease is much higher among the exposed workers, compared to the rest of the population**
- D.The disease temporality should be exist**
- E.With respect to the clinical and pathological presentation the occupational disease is often not matching that of non-occupational disease**

Ans: e

56.one of the following I is not involving in health education and counselling at a workplace?

- A. A safety engineer**
- B.An industrial hygienist**
- C. An industrial physician**
- D.An occupational nurse**
- E.A toxicologist**

Answer:e



لَنْ يَخْذَلَ اللَّهُ عَبْدًا جَفَّ قَلْبُهُ بِالدُّعَاءِ.

57.one of the following is not included within the activation of the occupational health program :

- a. Promoting the workers' health**
- B.Protecting the general environment of the community**
- C.Diagnosis and treatment of the occupational diseases**
- D.Providing special care for vulnerable groups of workers particularly women and children**
- E.Maintenance of a healthful work environment**

Answer:a

58.engineering methods of prevention including all , except

- A.Substitution of hazardous substance**
- B.Enclosure, machine guarding**
- C.Mechanization of heavy work process**
- D.Isolation of hazardous process**
- E.Periodic inspection of the different departments of the factory**

Answer:e

واعلم يا فتى؛ أنّه لن يُنقذك من كثرة التّراكمات إلا جِدّة
العَمَل.

- قصي الحسيلي

