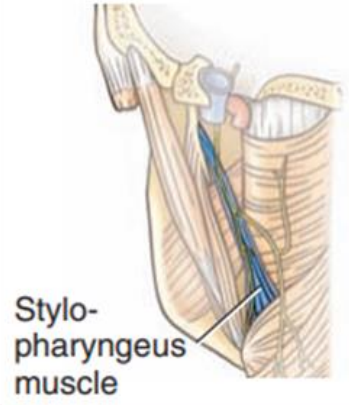
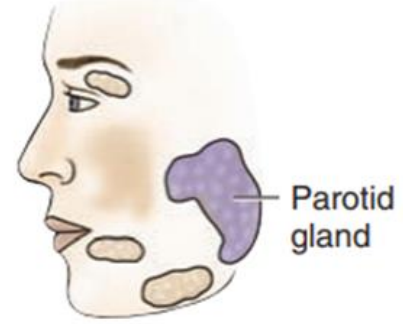


Somatic motor



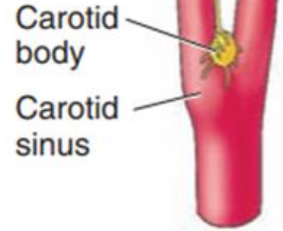
Visceral motor (parasympathetic)



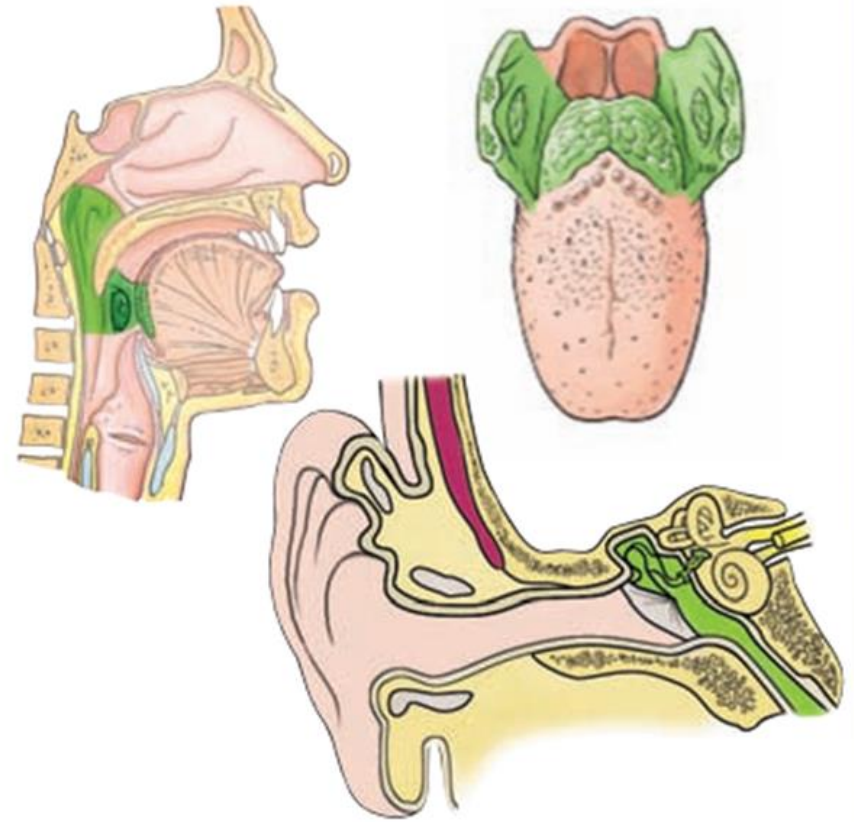
Special sensory (taste)

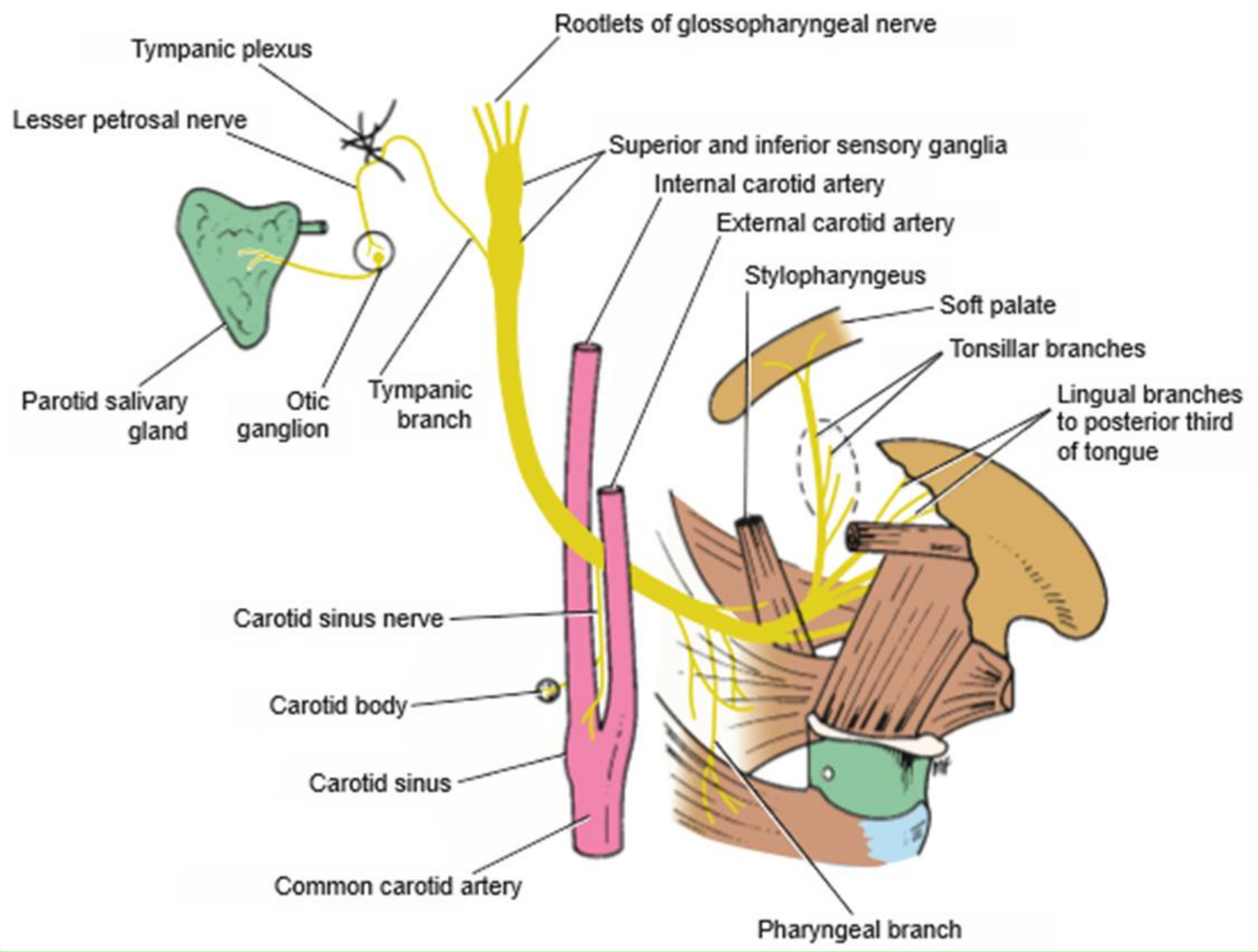


Visceral sensory



Somatic sensory





Glossopharyngeal nerve (CN IX)

Vagus nerve (CN X)

Spinal accessory nerve (CN XI)

Jugular foramen

Internal jugular vein

Superior ganglion of vagus nerve*

Inferior ganglion of vagus nerve*

***Sensory ganglion**

Internal carotid artery

Superior ganglion of glossopharyngeal nerve*

Inferior ganglion of glossopharyngeal nerve*

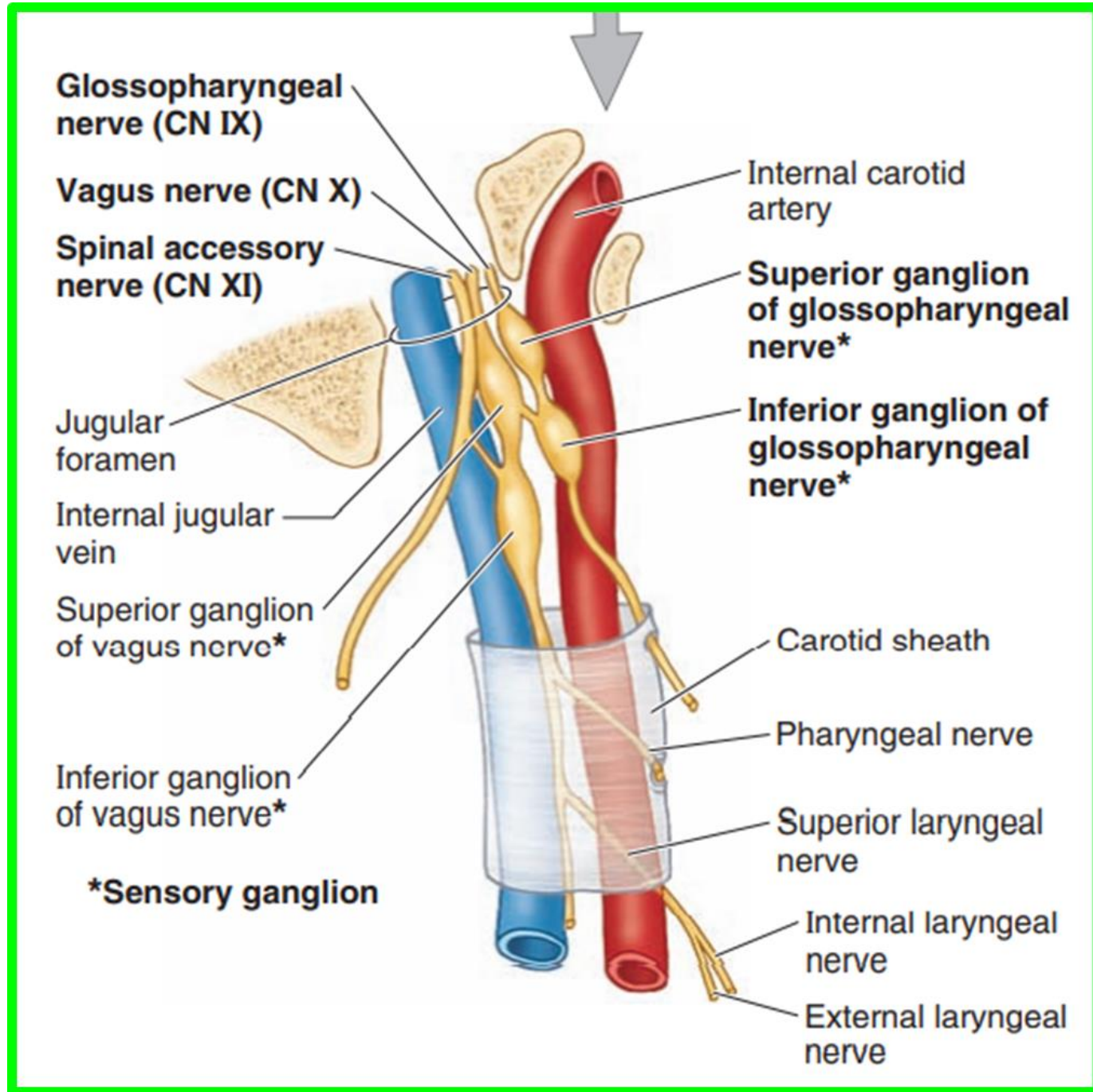
Carotid sheath

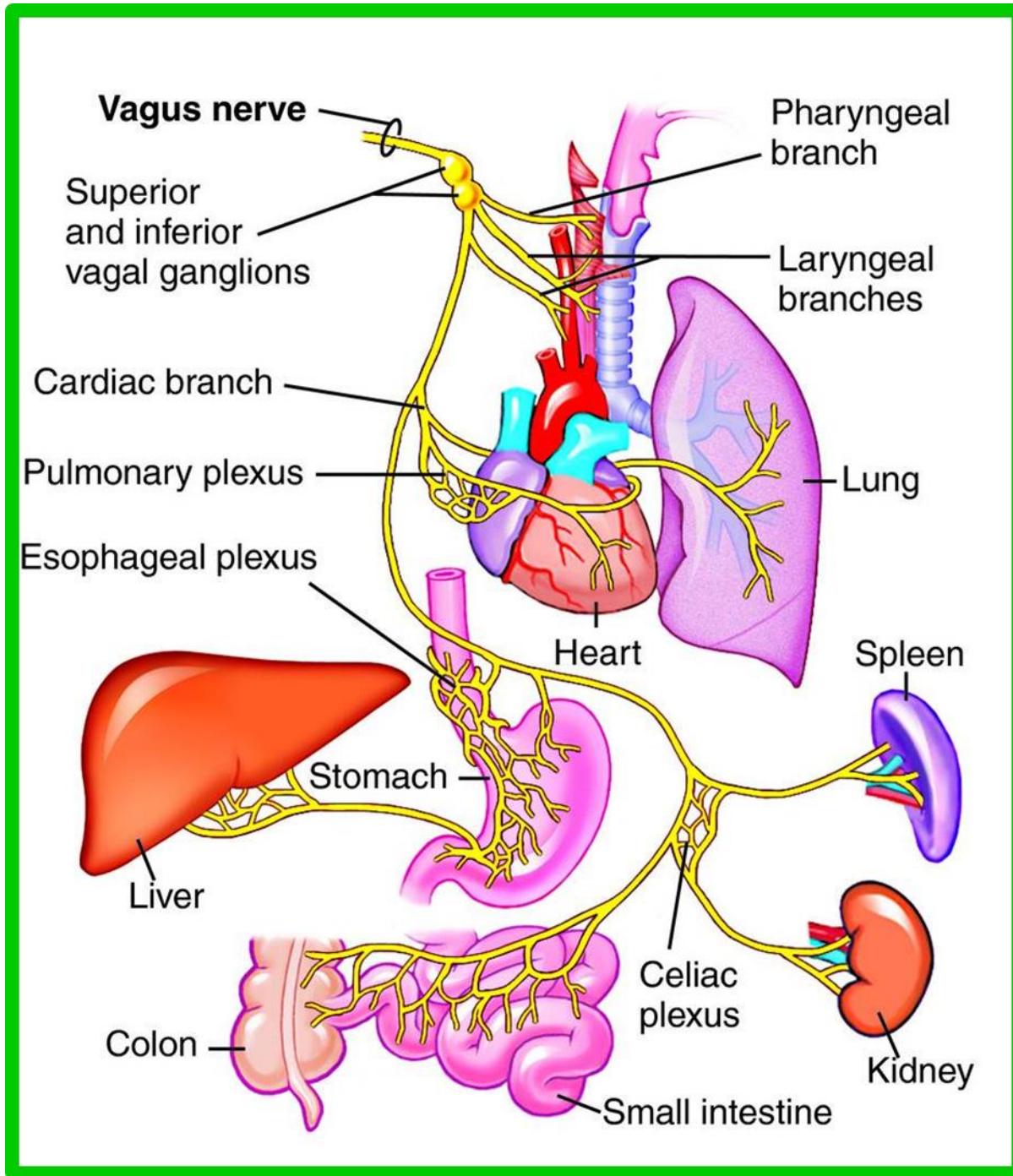
Pharyngeal nerve

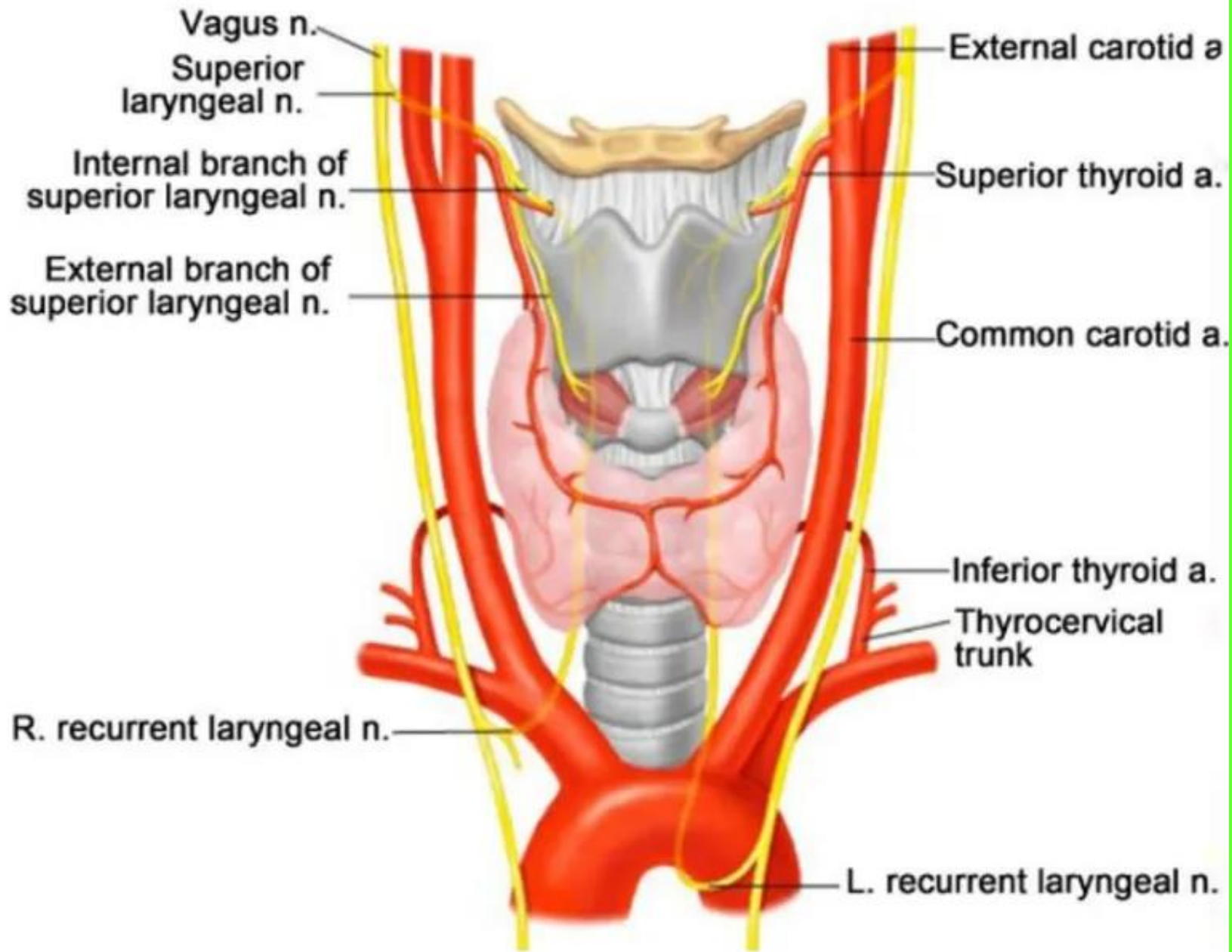
Superior laryngeal nerve

Internal laryngeal nerve

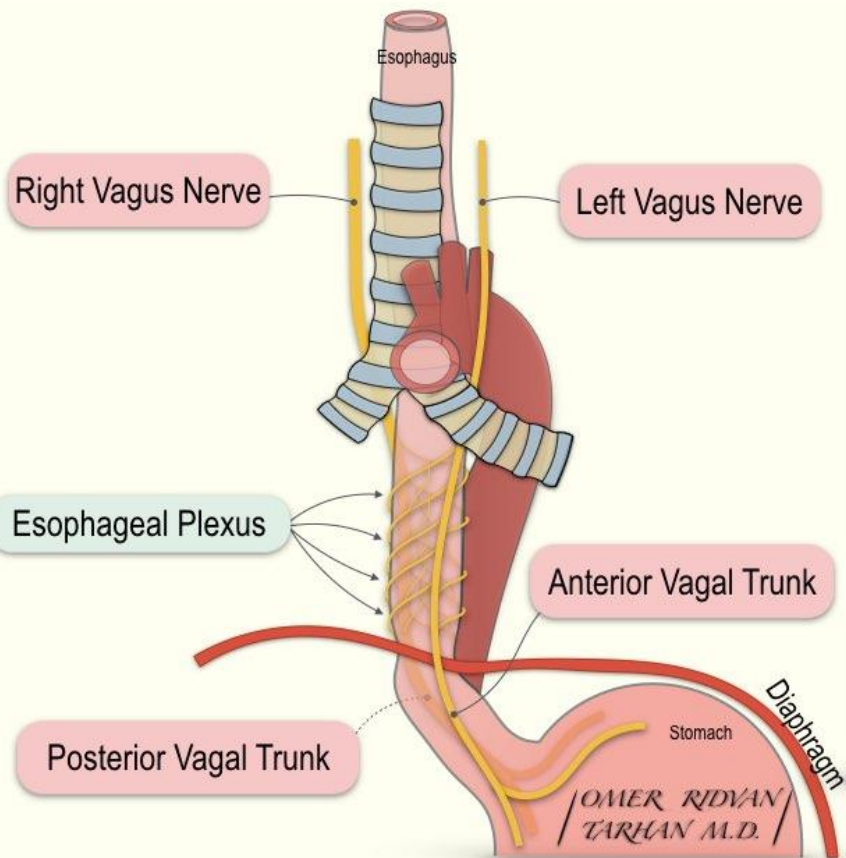
External laryngeal nerve







Vagus Nerve and Esophageal Plexus



After the **right and left vagus** pass behind the right and left main bronchus, they come close to the esophagus (here, vagus nerves are exactly to the right and left of the esophagus).

Then, some fibers leave the vagus nerves and form a plexus around the esophagus (**esophageal plexus**). The fibers of the right and left vagus join each other.

Just above the diaphragm, the fibers of the esophageal plexus rejoin the right and left vagus, forming two main trunks (**Anterior & posterior vagal trunk**).

turkcerrahi.com©

