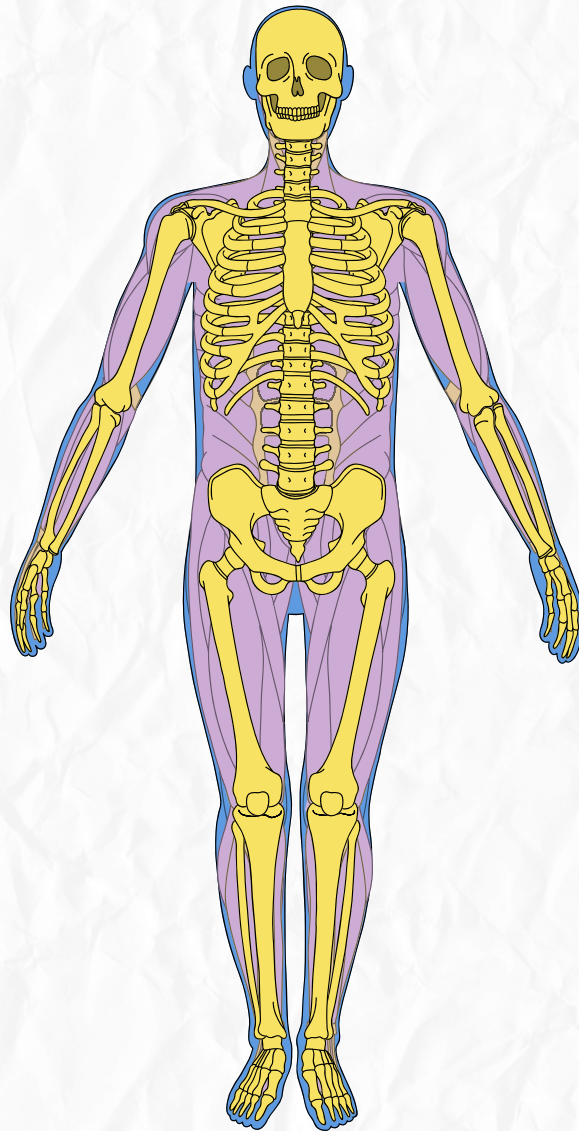


Physiology

Quiz time



Lec 7

Done by: Lamara Al Ayed

Q1: According to Landsteiner's Law, if a person has Antigen A on their Red Blood Cells, which agglutinin (antibody) will be present in their plasma

- A) Anti-A**
- B) Anti-B**
- C) Both Anti-A and Anti-B**
- D) No antibodies**

Answer: B) Anti-B

Q2: Which blood group is known as the "Universal Donor" because its RBCs lack both A and B antigens

- A) Group A**
- B) Group B**
- C) Group AB**
- D) Group O**

Answer: D) Group O

:Q3: A person with blood group AB is considered a "Universal Recipient" because

- A) Their plasma contains both Anti-A and Anti-B antibodies**
- B) Their RBCs have no antigens**
- C) Their plasma contains no Anti-A or Anti-B antibodies**
- D) They lack the Rh factor**

Answer: C) Their plasma contains no Anti-A or Anti-B antibodies

:Q4: The Rh antigen is also known as

- A) D-antigen**
- B) Alpha-antigen**
- C) Agglutinin**
- D) Plasma protein**

Answer: A) D-antigen

:Q5: Unlike the ABO system, Anti-D antibodies in an Rh-negative person are

- A) Naturally occurring from birth**
- B) Formed only after sensitization (exposure to Rh+ blood)**
- C) Always present in the plasma**
- D) Inherited from the mother regardless of blood type**

Answer: B) Formed only after sensitization (exposure to Rh+ blood)

Q6: Erythroblastosis Fetalis (Hemolytic Disease of the Newborn) typically occurs when

- A) The mother is Rh+ and the fetus is Rh
- B) Both the mother and fetus are Rh
- +C) The mother is Rh- and the fetus is Rh
- +D) Both the mother and fetus are Rh

+Answer: C) The mother is Rh- and the fetus is Rh

?Q7: What is the main clinical indication for a blood transfusion

- A) Mild headache
- B) Acute hemorrhage (blood loss > 30%)
- C) Normal pregnancy
- D) High blood pressure

Answer: B) Acute hemorrhage (blood loss > 30%)

Q8: During an incompatible blood transfusion, the "Site of Danger" is the interaction between

- A) Recipient's antigens and Donor's antibodies
- B) Donor's antigens and Recipient's antibodies
- C) Recipient's WBCs and Donor's WBCs
- D) Donor's plasma and Recipient's plasma proteins

Answer: B) Donor's antigens and Recipient's antibodies

Q9: Which of the following is a DELAYED complication of blood transfusion

- A) Anaphylactic shock
- B) Hemolytic reaction
- C) Transmission of diseases like Hepatitis or HIV
- D) Acute pulmonary edema

Answer: C) Transmission of diseases like Hepatitis or HIV

:Q10: Agglutination of RBCs during a cross-match test indicates

- A) The blood is compatible and safe for transfusion
- B) The blood is incompatible and cannot be transfused
- C) The patient has a high RBC count
- D) The donor has a strong immune system

Answer: B) The blood is incompatible and cannot be transfused



سُبْحَانَكَ اللَّهُمَّ وَبِحَمْدِكَ ، أَشْهَدُ أَنْ لَا
إِلَهَ إِلَّا أَنْتَ ، أَسْتَغْفِرُكَ وَأَتُوبُ إِلَيْكَ .