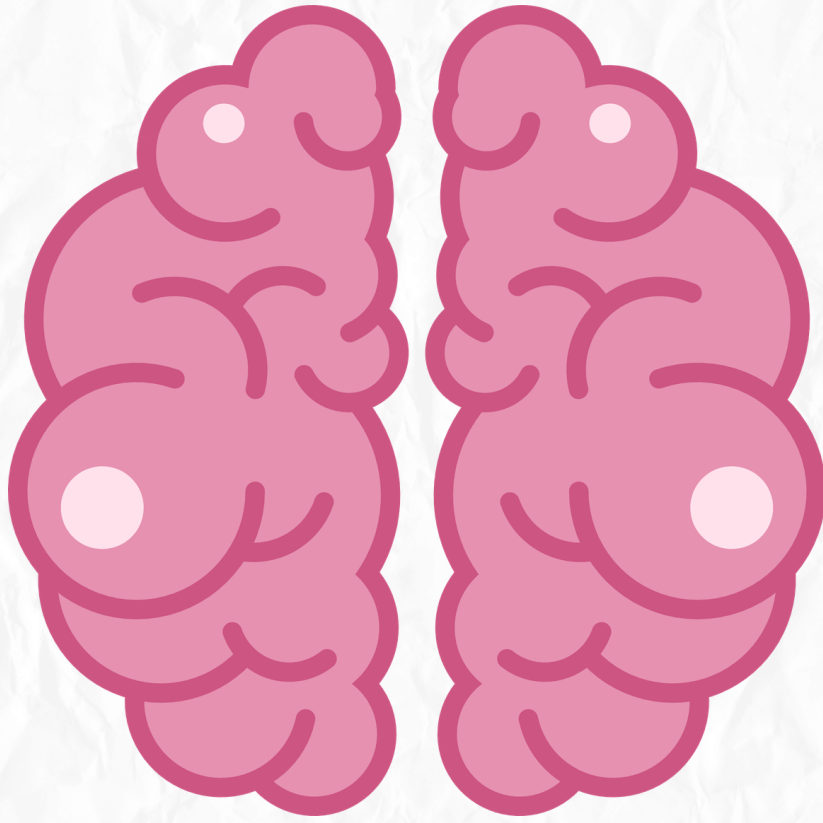


Neuroanatomy

Archive



When you can't get your eye downward and laterally, which nerve may be injured?

- A) Abducent nerve
- B) Trochlear nerve
- C) Ophthalmic nerve

Answer: B) Trochlear nerve

Which of the following extraocular muscles is CORRECTLY matched with its nerve supply:

- A) Medial rectus and Abducent nerve
- B) Superior rectus and Oculomotor nerve
- C) Inferior rectus and Trigeminal nerve
- D) Lateral rectus and Trochlear nerve
- E) Superior oblique and Oculomotor nerve

Answer: B) Superior rectus and Oculomotor nerve

Which of the following is FALSE regarding the characteristics of the cranial nerves supplying the extraocular muscles?

- A) Abducent nerve has the longest intracranial course
- B) Abducent nerve is the thinnest
- C) Trochlear nerve originates from the dorsal aspect of the brainstem
- D) Oculomotor nerve supplies the medial rectus muscle
- E) Oculomotor nerve supplies the superior oblique muscle

Answer: E) Oculomotor nerve supplies the superior oblique muscle

The parasympathetic preganglionic fibers of the ciliary ganglion arise from:

- A) Edinger-Westphal nucleus
- B) Facial nucleus
- C) Trigeminal nucleus
- D) Hypoglossal nucleus

Answer : A) Edinger-Westphal nucleus

Which nerve supplies the superior oblique muscle?

- A) Oculomotor nerve
- B) Trochlear nerve
- C) Abducent nerve
- D) Optic nerve

Answer : B) Trochlear nerve

The frontal nerve divides into:

- A) Infraorbital and zygomatic nerves
- B) Supratrochlear and supraorbital nerves
- C) Nasociliary and lacrimal nerves
- D) Zygomatic and lacrimal nerves

Answer : B) Supratrochlear and supraorbital nerves

The abducent nerve supplies the:

- A) Superior rectus muscle
- B) Medial rectus muscle
- C) Lateral rectus muscle
- D) Inferior oblique muscle

Answer : C) Lateral rectus muscle

The ophthalmic artery is a branch of the:

- A) External carotid artery
- B) Internal carotid artery
- C) Vertebral artery
- D) Basilar artery

Answer : B) Internal carotid artery

The ophthalmic artery enters the orbit through the:

- A) Inferior orbital fissure
- B) Superior orbital fissure
- C) Optic canal
- D) Supraorbital foramen

Answer : C) Optic canal

The central artery of the retina enters the eyeball at the:

- A) Cornea
- B) Optic disc
- C) Lens
- D) Retina margin

Answer : B) Optic disc

The trigeminal nerve is characterized as which type of cranial nerve?

- A. Mixed nerve
- B. Special sensory only
- C. Parasympathetic only
- D. Purely motor
- E. Purely sensory

a

Nuclei of the facial nerve include the followings EXCEPT:

- a -The superior salivatory nucleus
- b -The lacrimal nucleus
- c -Main Motor Nucleus
- d -The nucleus of the tractus solitarius
- e -Edinger - Westphal nucleus

Ans :(e)

Which of the following located in junction?

optic chiasma

سُبْحَانَكَ اللَّهُمَّ وَبِحَمْدِكَ ، أَشْهَدُ أَنْ لَا
إِلَهَ إِلَّا أَنْتَ ، أَسْتَغْفِرُكَ وَأَتُوبُ إِلَيْكَ.