



Ascaris lumbricoides





**Ascaris lumbricoides
Egg**



Hymenolepis nana Egg





Hymenolepis Nana Adult



Hymenolepis nana

Scolex



Giardia Lamblia Trophozoit



لا تحرك الشريحة

Don't move the
slide

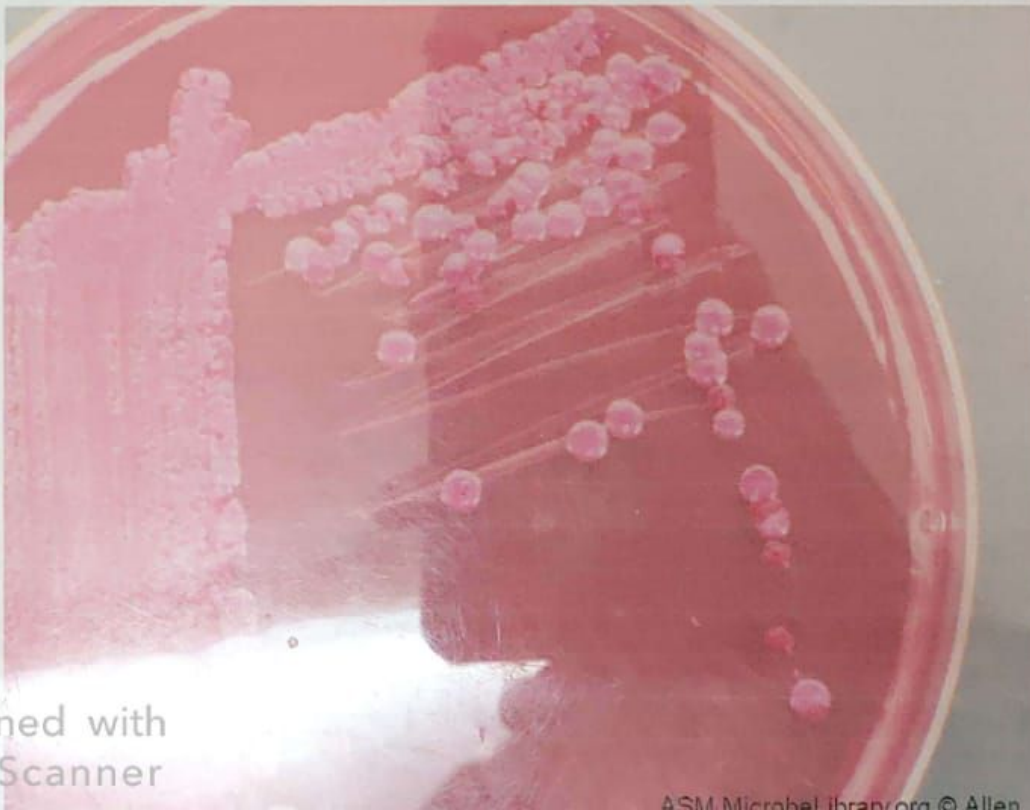
Non-lactose fermentation on MacConkey agar

- Non-lactose fermentation by producing pale yellow colonies.
- The non-lactose fermenters e.g. *Salmonella*, *Shigella* and *Proteus*.



Lactose fermentation on MacConkey agar

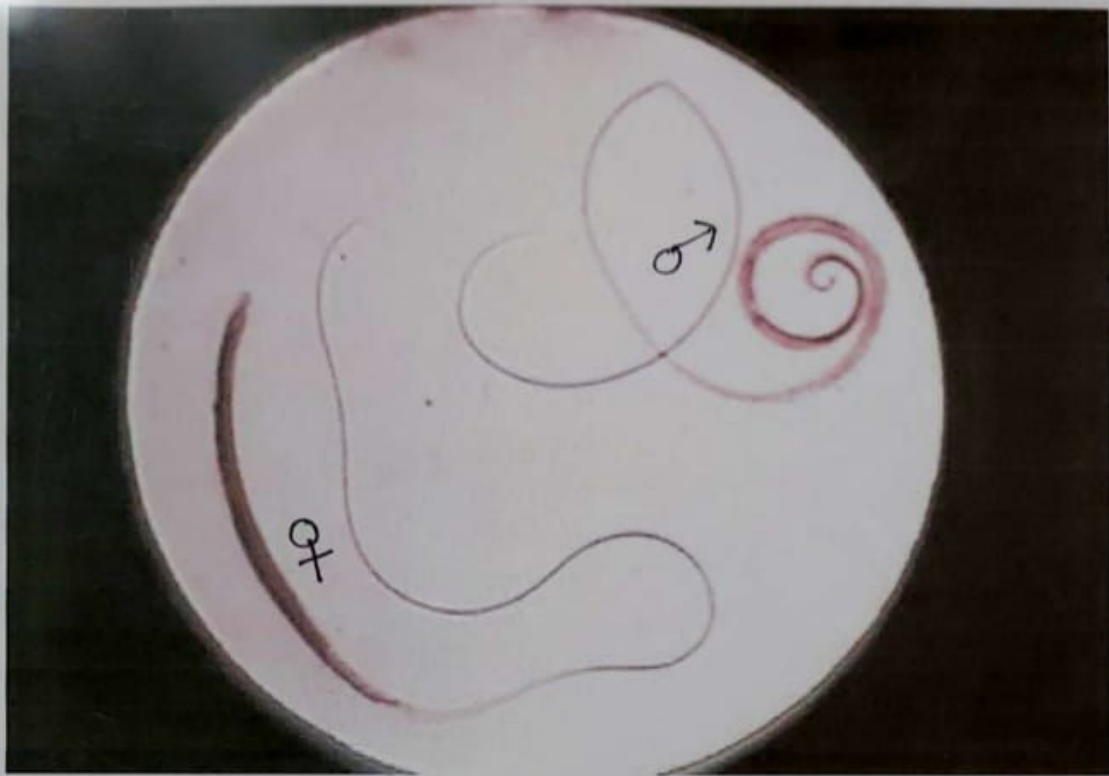
- lactose fermentation by producing pink colonies.
- The lactose fermenters e.g. *E. coli*, *Klebsiella* and *Citrobacter*.





Trichuris trichiura

Eggs



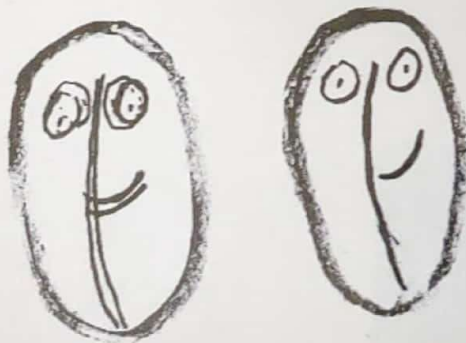
Trichuris trichiura

Female and Male



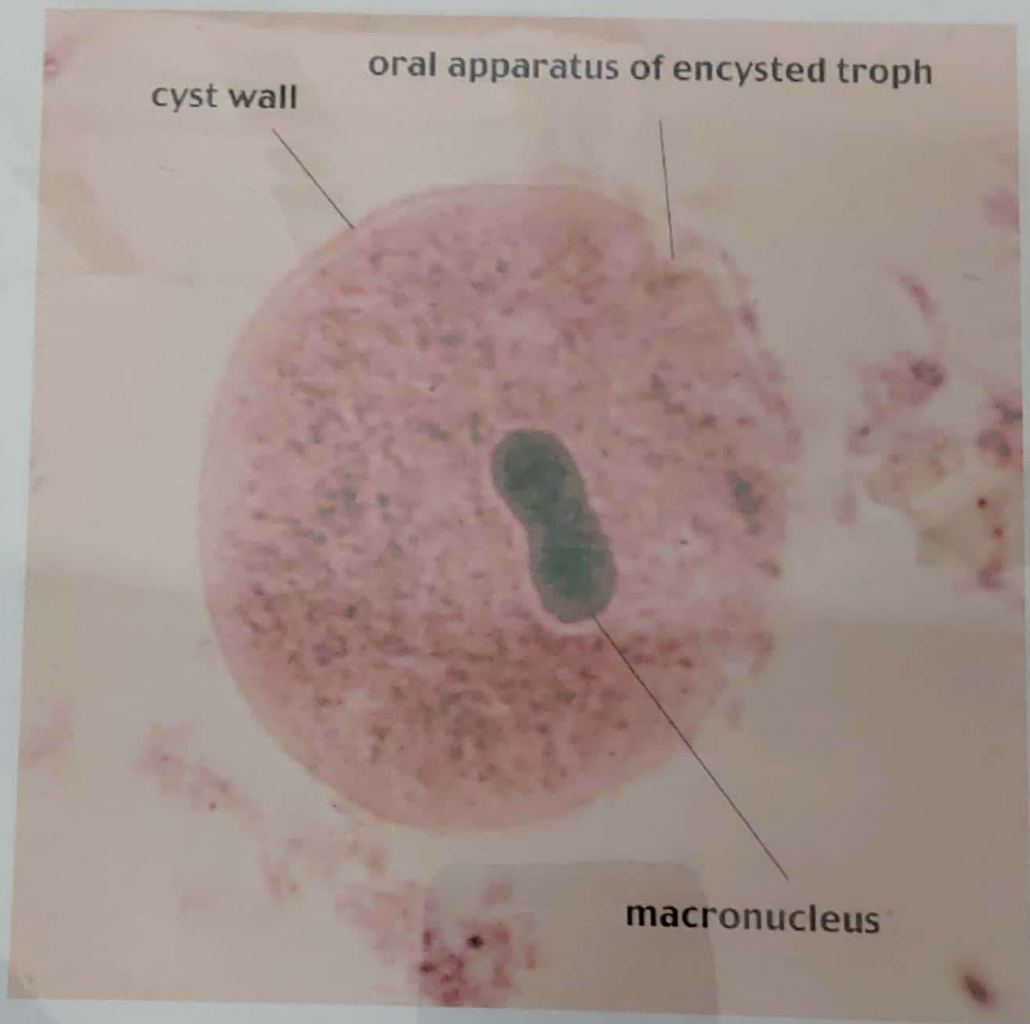
Giardia Lamblia Cyst

Young cyst



Older cyst
(organelles doubled)

TAM
© 2006



Balantidium coli Cyst

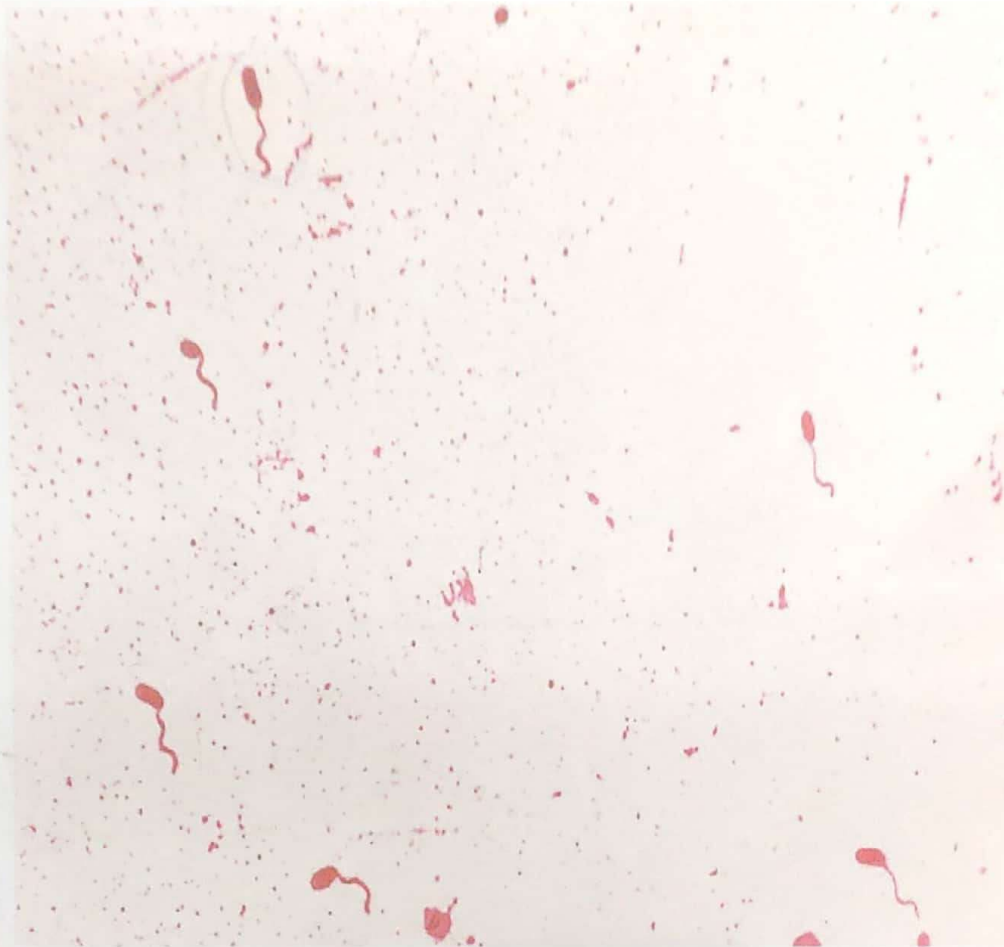
Thiosulphate citrate bile sucrose (TCBS) agar

Composition: It is alkaline agar medium contains thiosulphate, citrate and bile as selective substances. It contains also sucrose as test sugar and bromothymol blue as indicator that give yellow color in acidic pH.

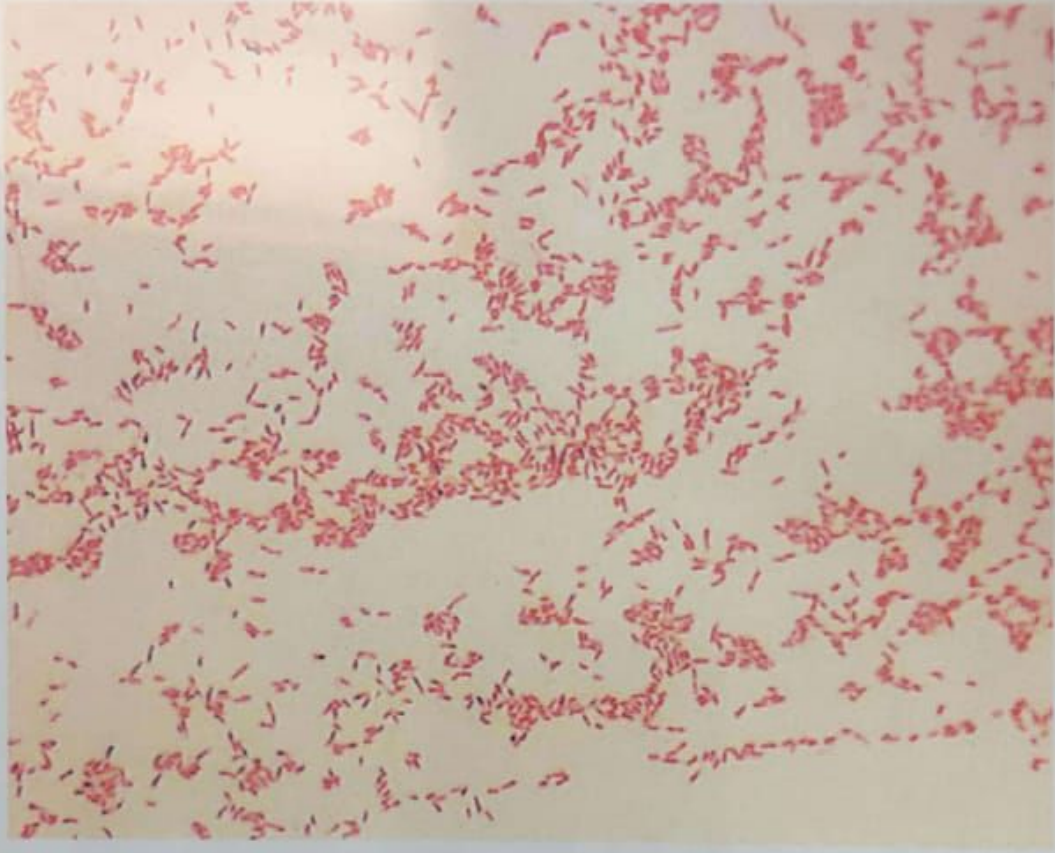
Appearance: It is a green semi-transparent medium.

Uses: It is a selective and indicator medium for the isolation of *Vibrio cholerae*. *Vibrio cholerae* produces yellow colonies due to fermentation of sucrose with acid production.





Vibrio cholerae.



Gram negative bacilli