



gty.im/
128570402

By
BIOPHOTO
ASSOCIATES



gty.im/
145094197

By
Visuals Unlimited,
Inc./Dr. Fred Hossler

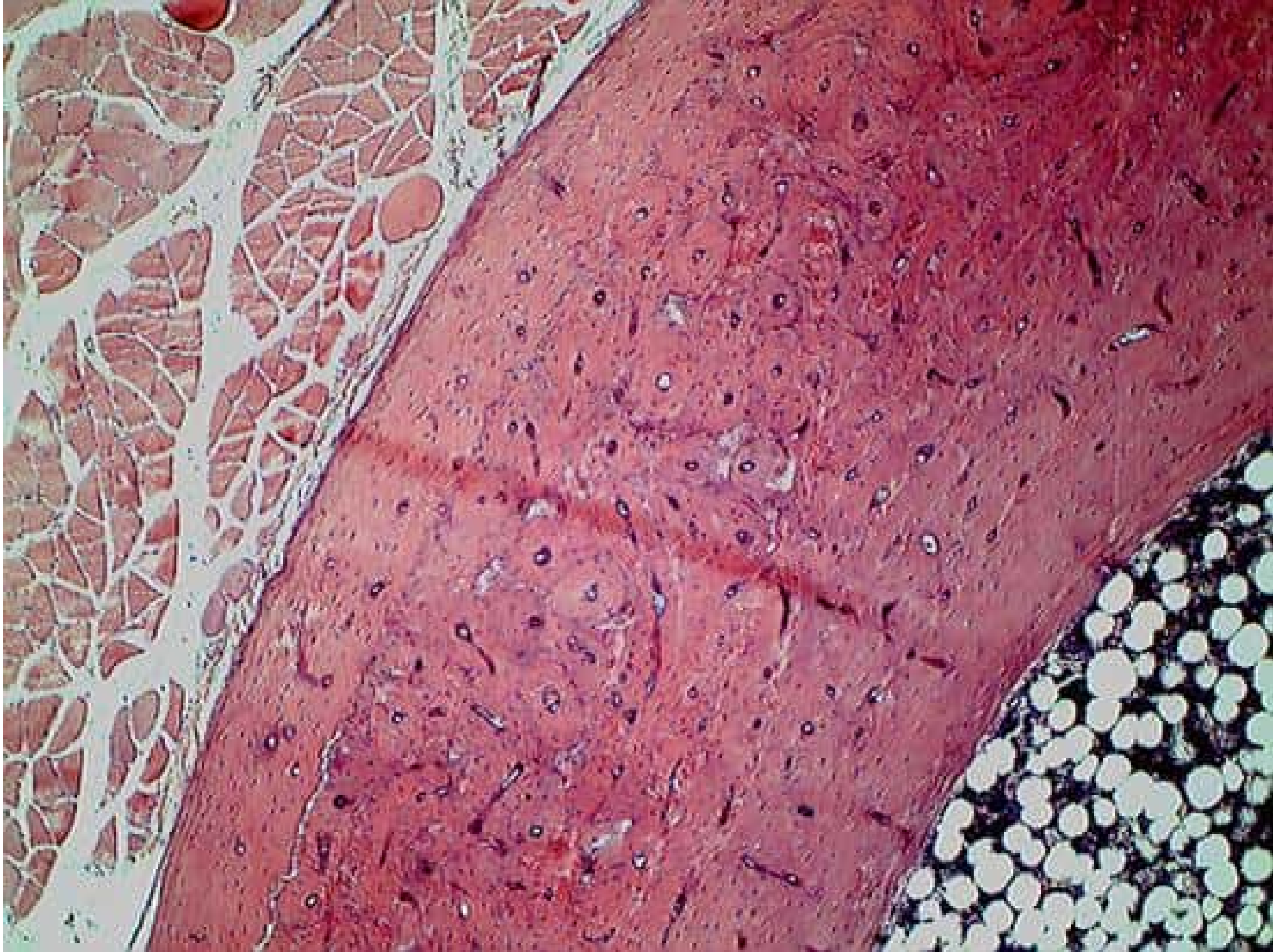
A close-up photograph of a tiger's eye, showing the intricate patterns of the iris and the surrounding fur. The eye is the central focus, with a dark pupil and a lighter, textured iris. The fur around the eye is a mix of brown and black stripes.

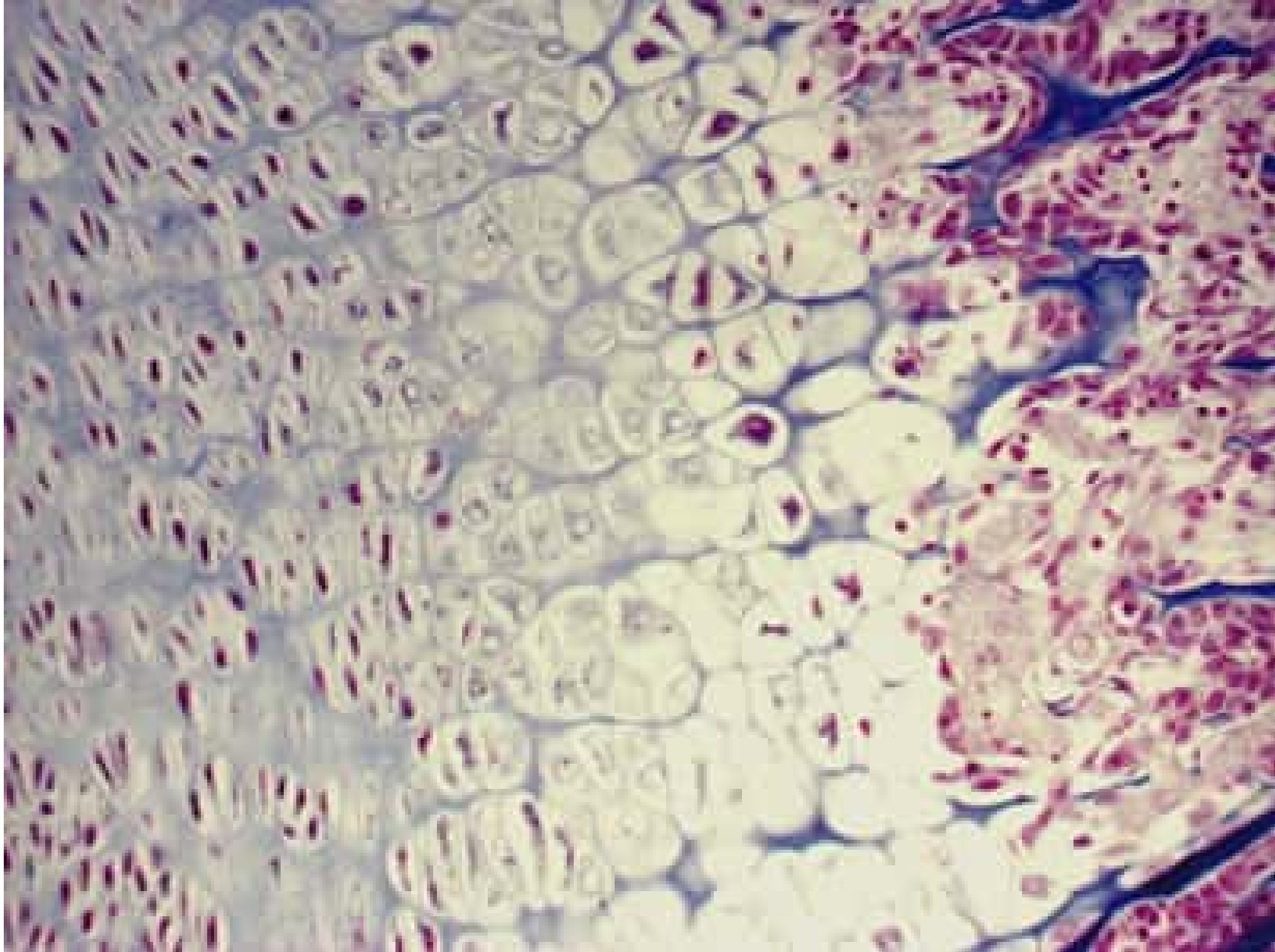
gty.im/

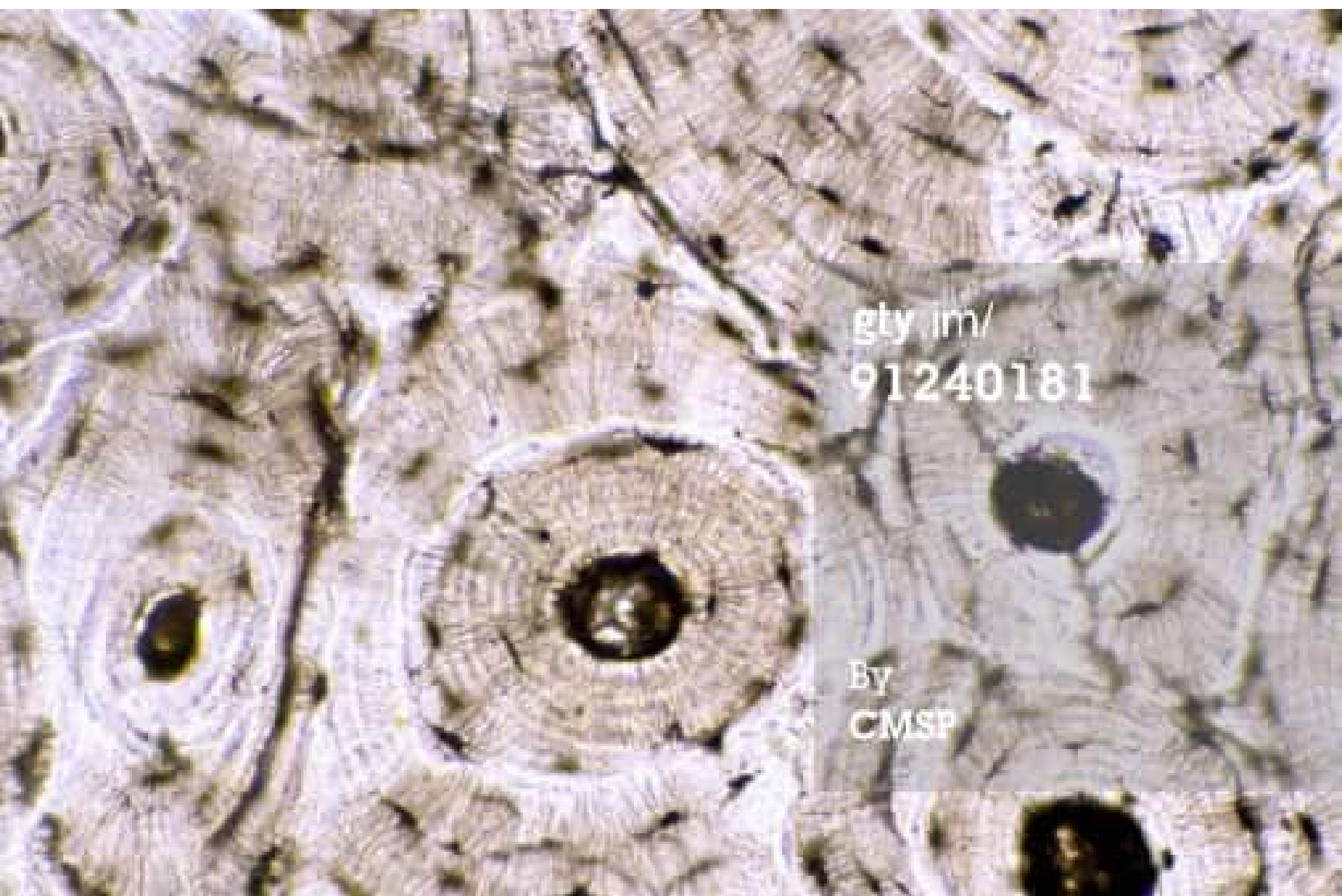
156850339

By

Visuals Unlimited,
Inc./Scientifica







gty im/
91240181

By
CMSP

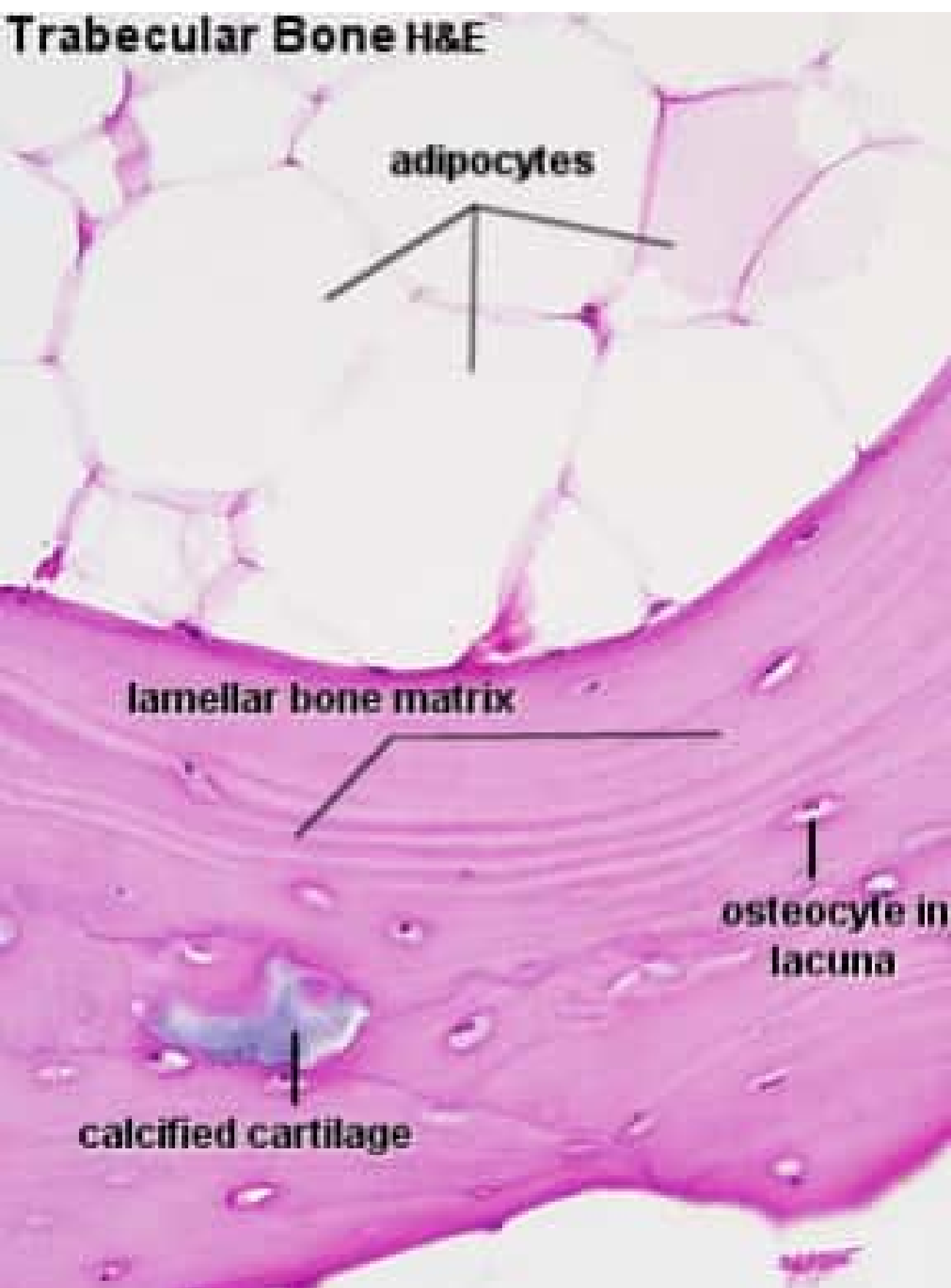
**Compact Bone
ground**

**Volkman's
canals**

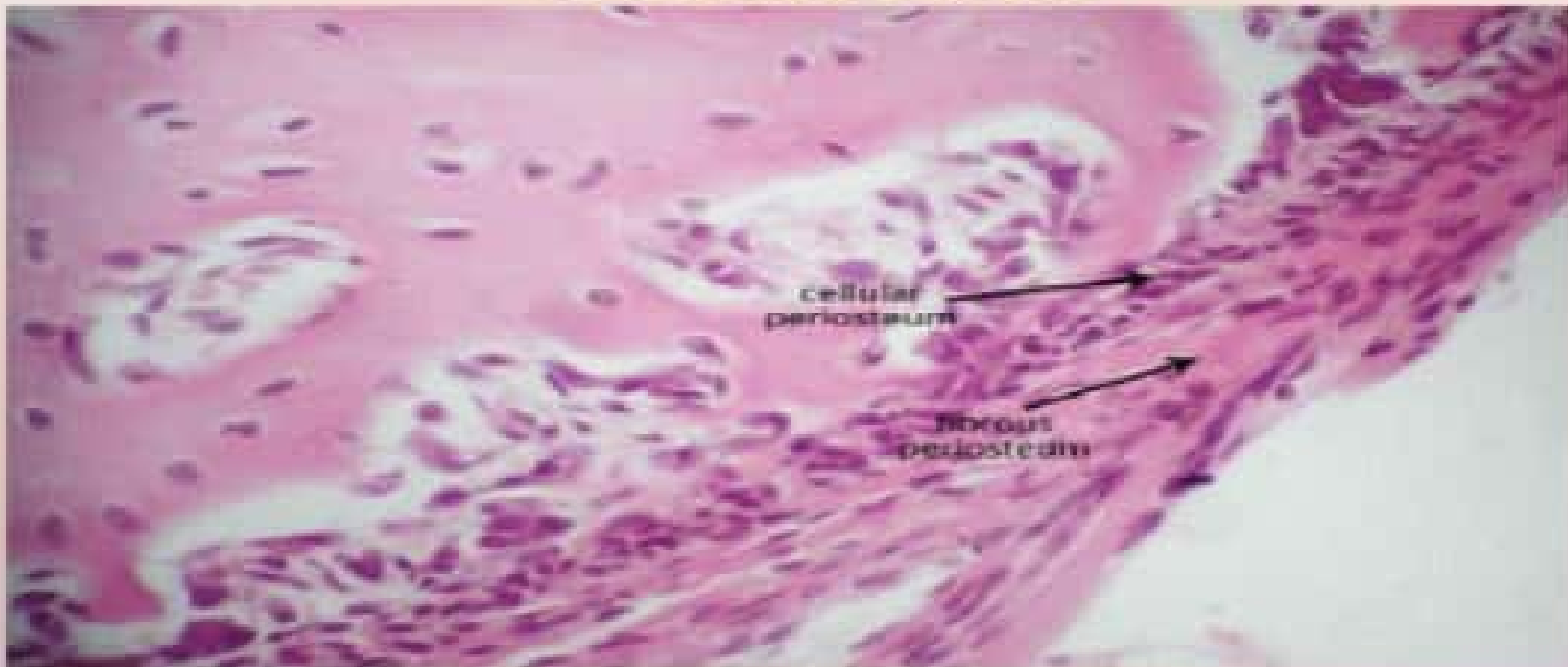
Haversian systems



Trabecular Bone H&E

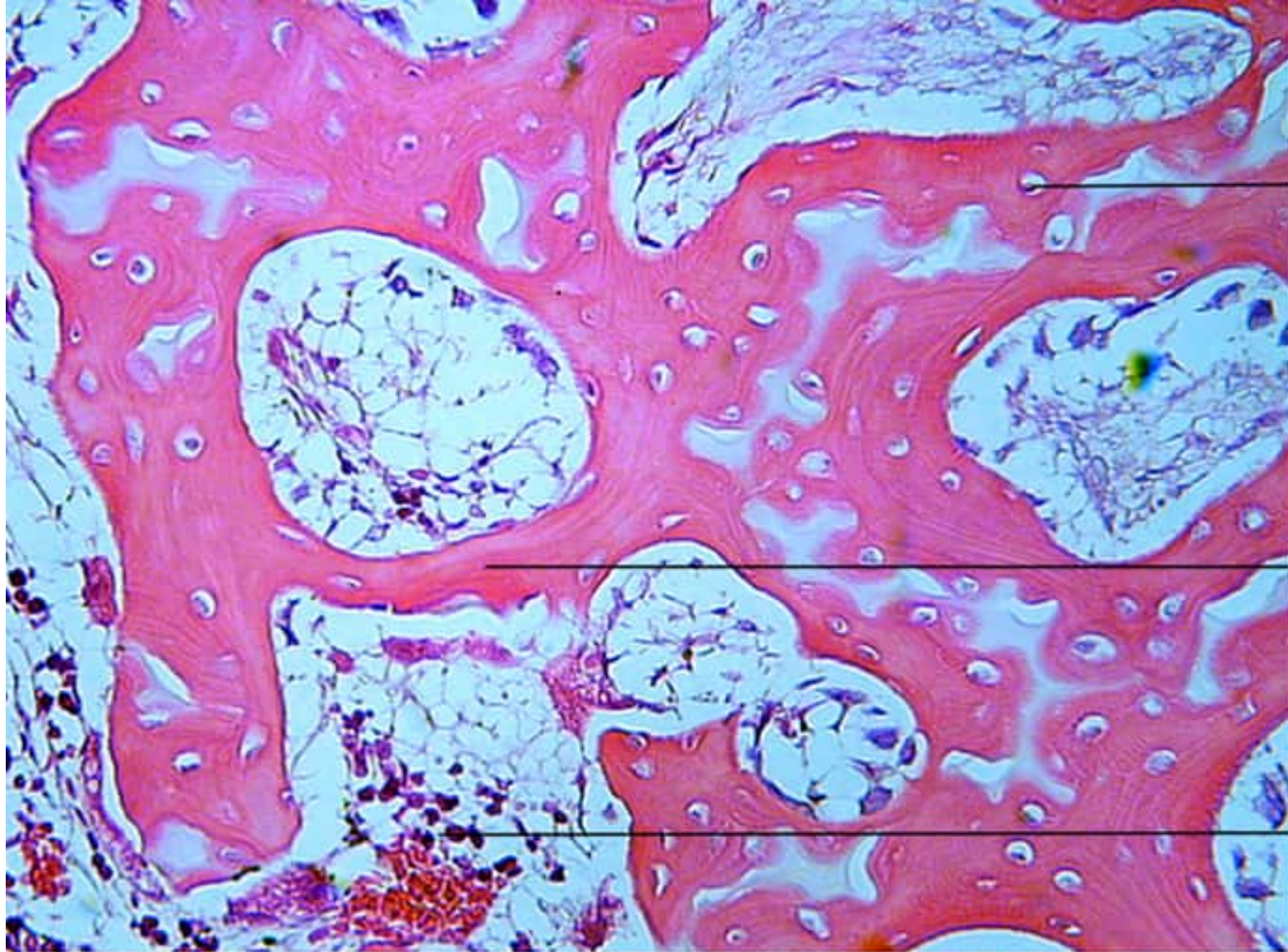


PERIOSTEUM



MEMBRANE COVERING OUTER SURFACE OF BONE

LAYERS: 1. FIBROUS LAYER
2. CAMBIUM LAYER

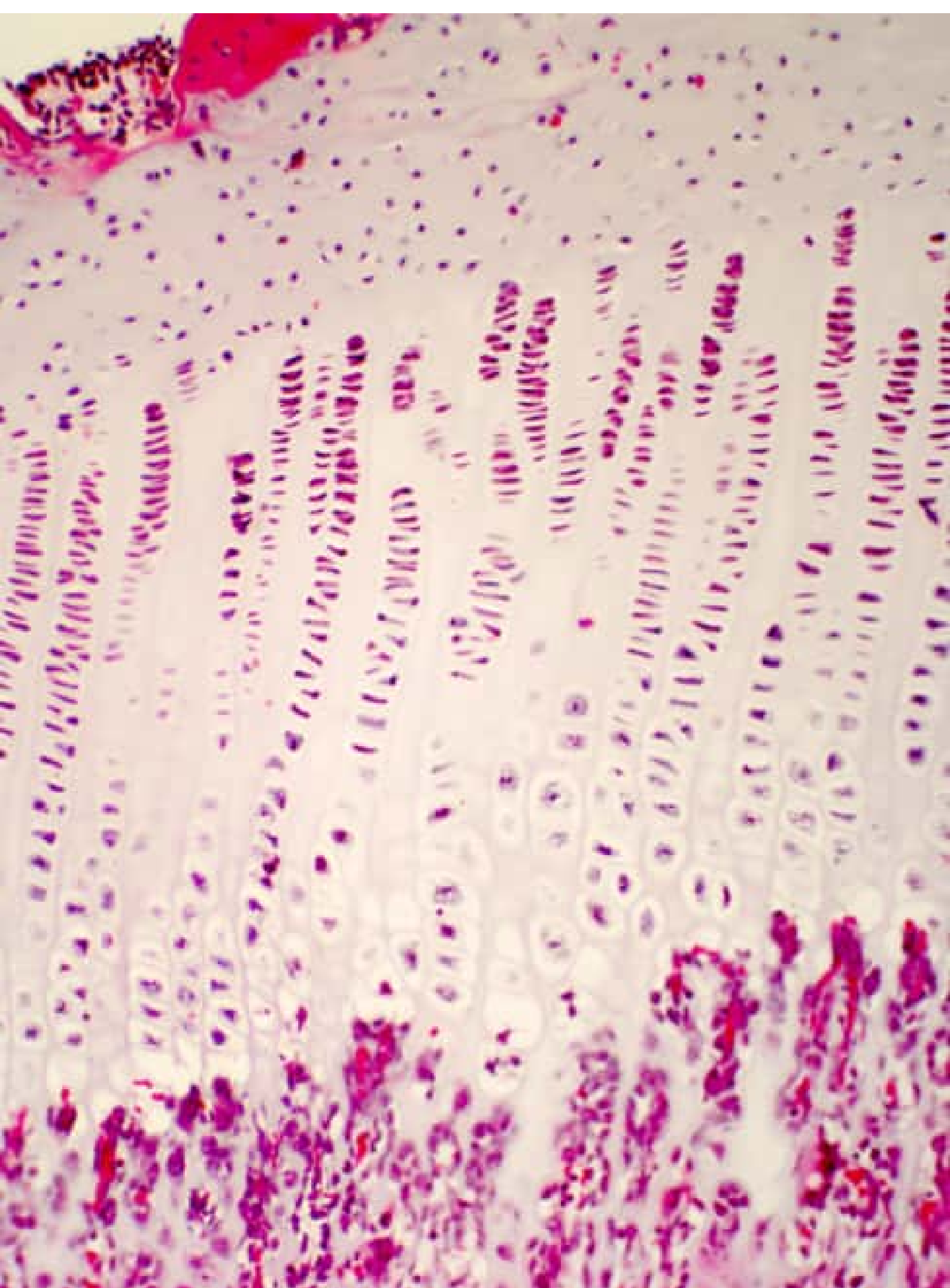


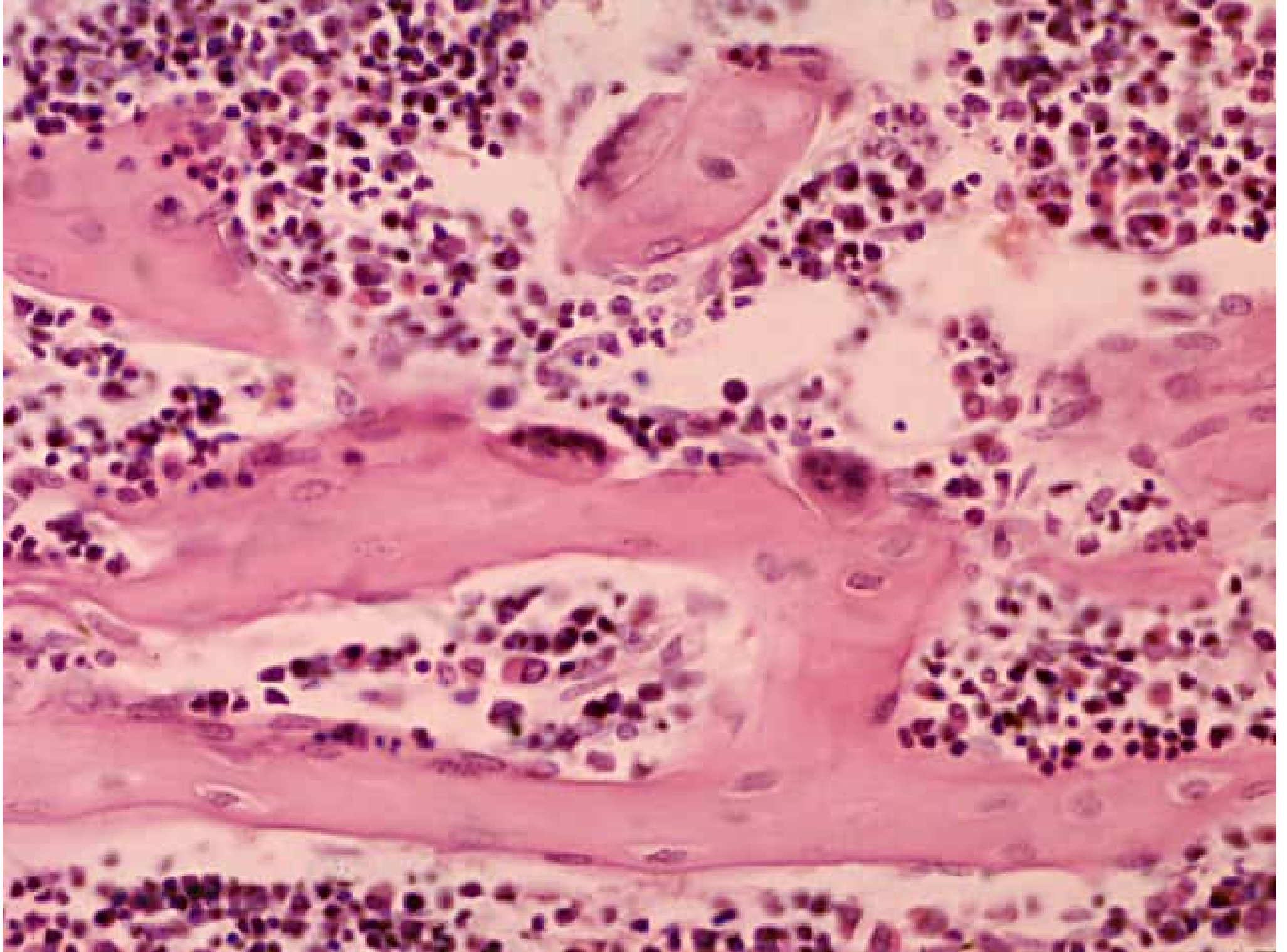
Osteocyte

Trabecula

Red bone
Marrow

Cancellous (Spongy) Bone (400x)





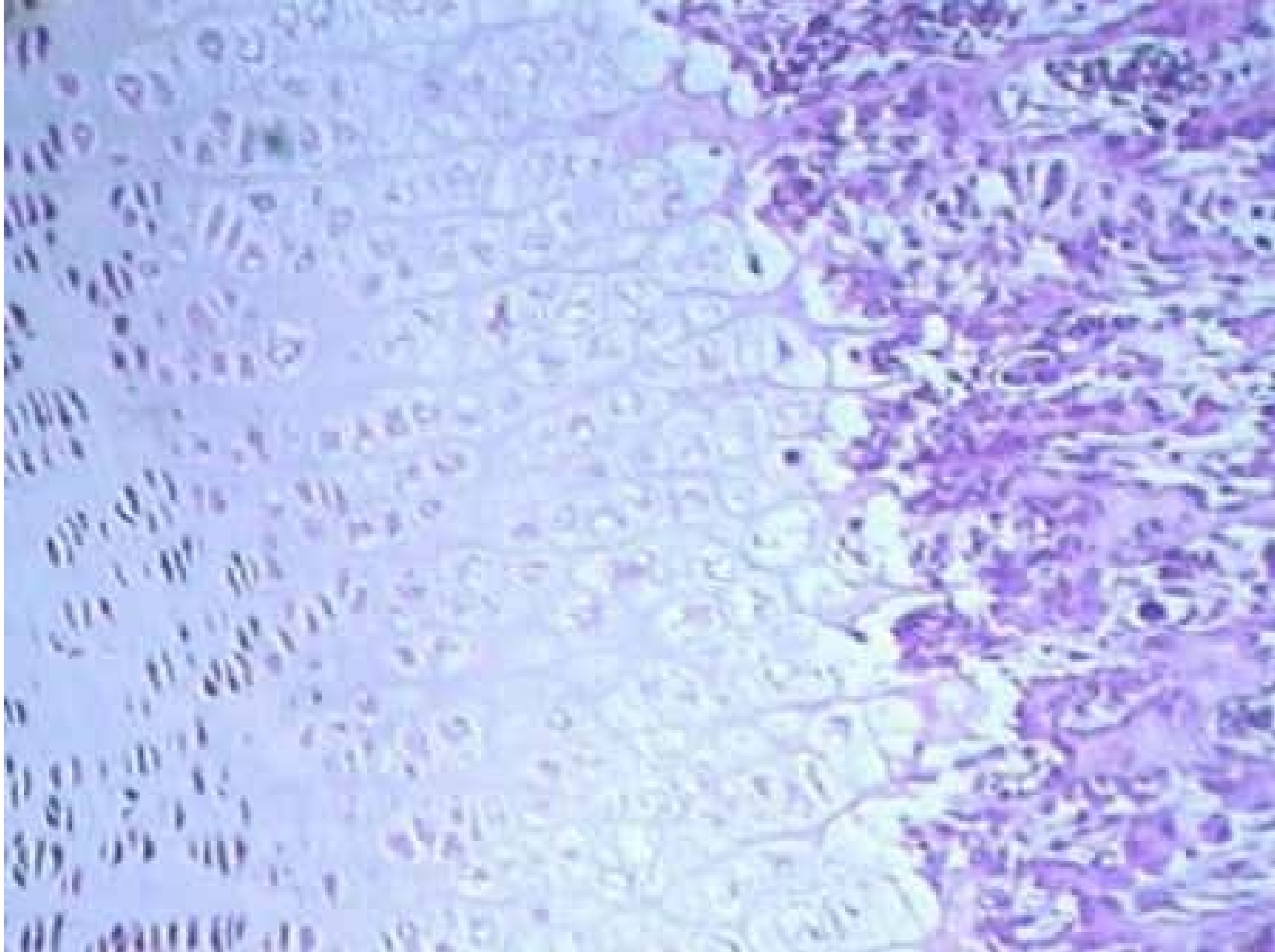
Bone H&E

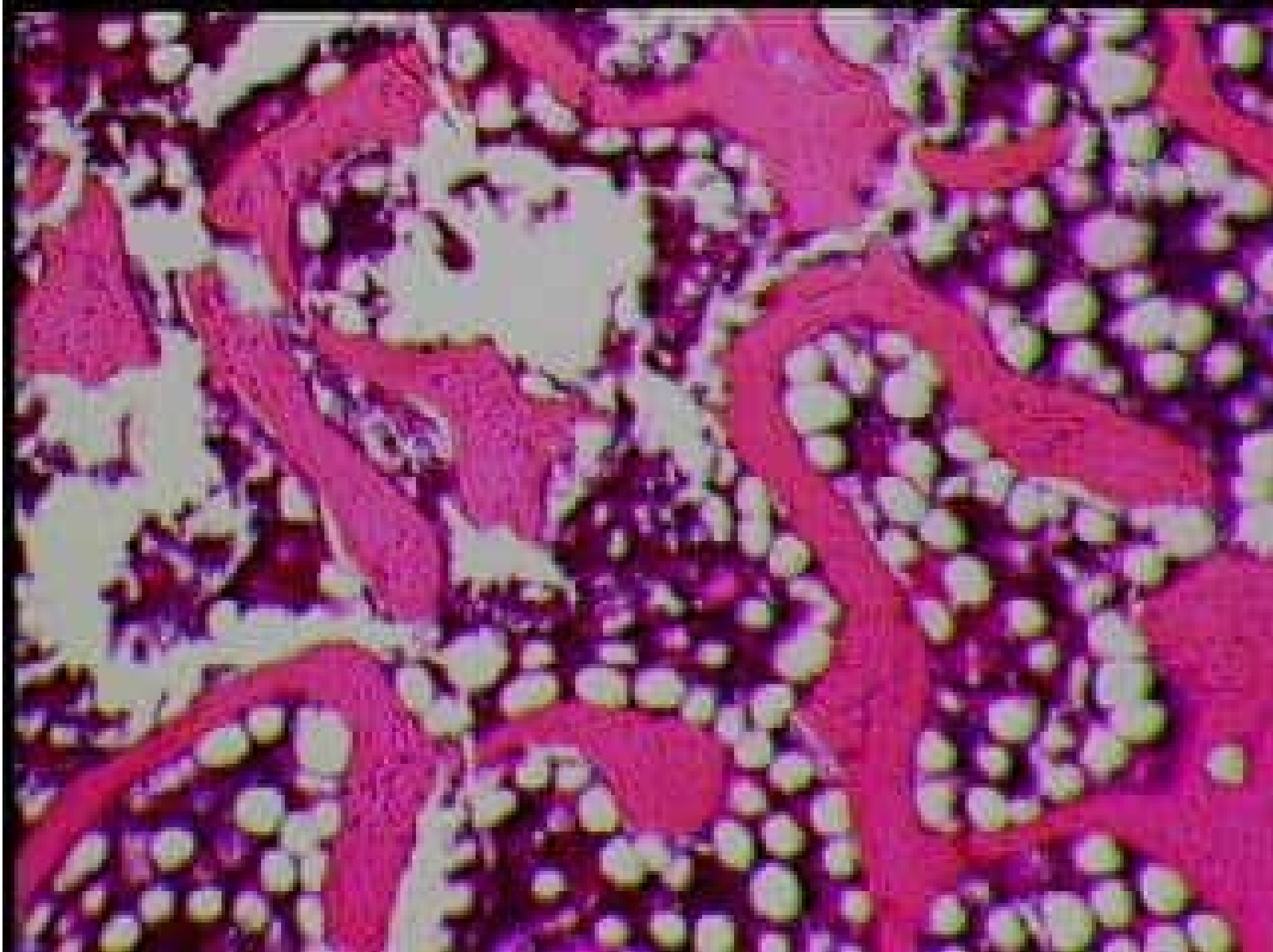


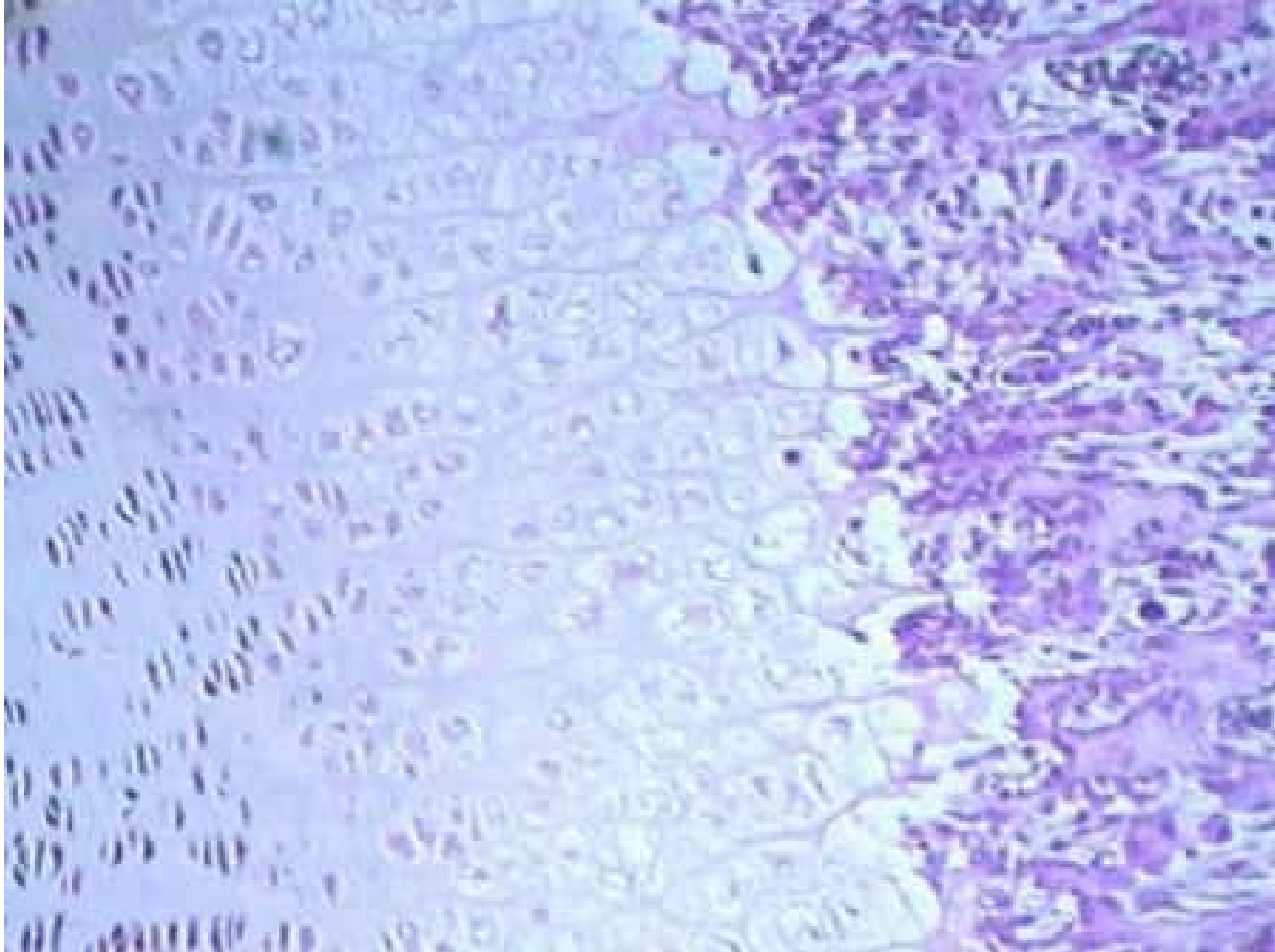
periosteum

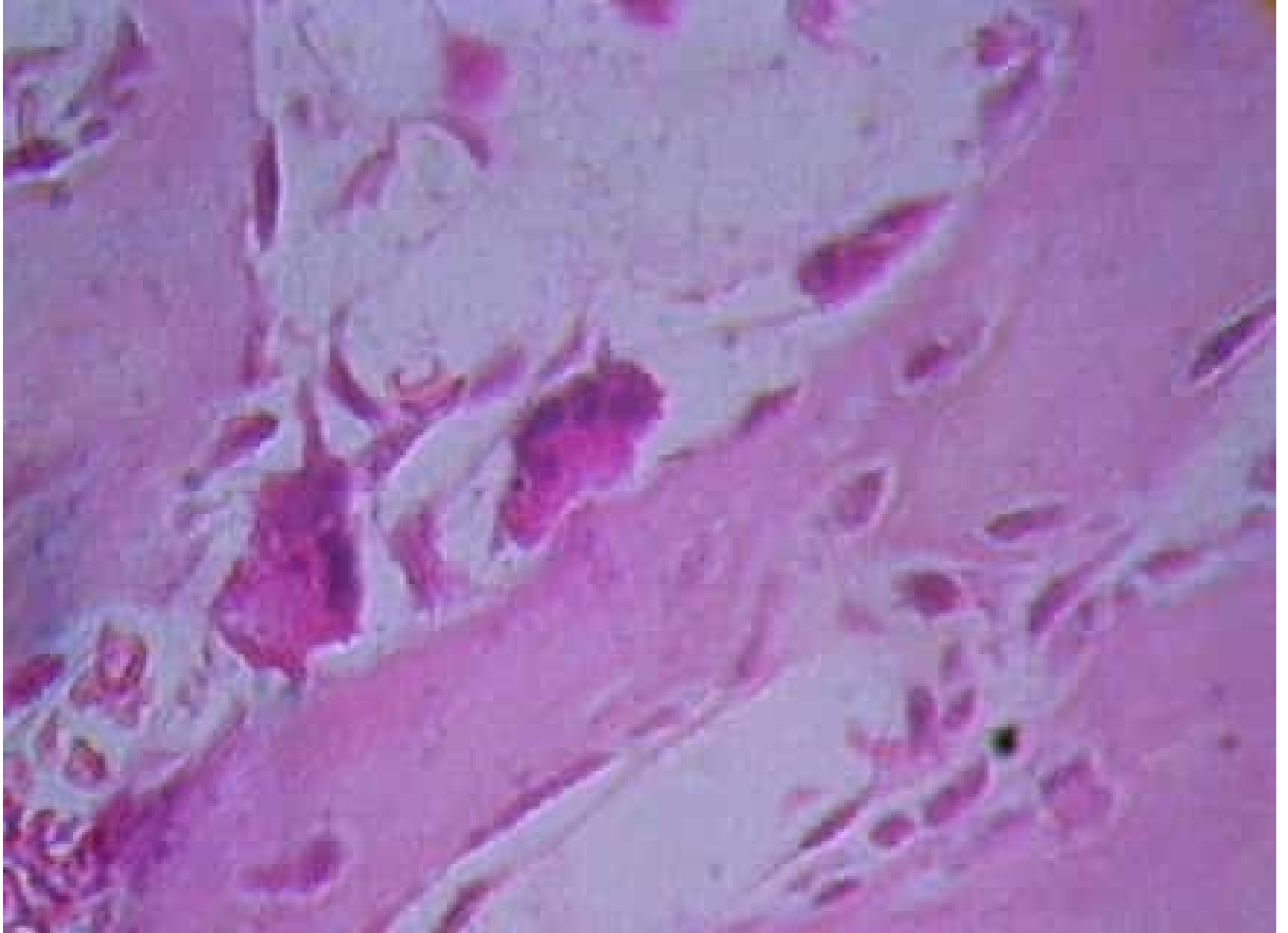
bone









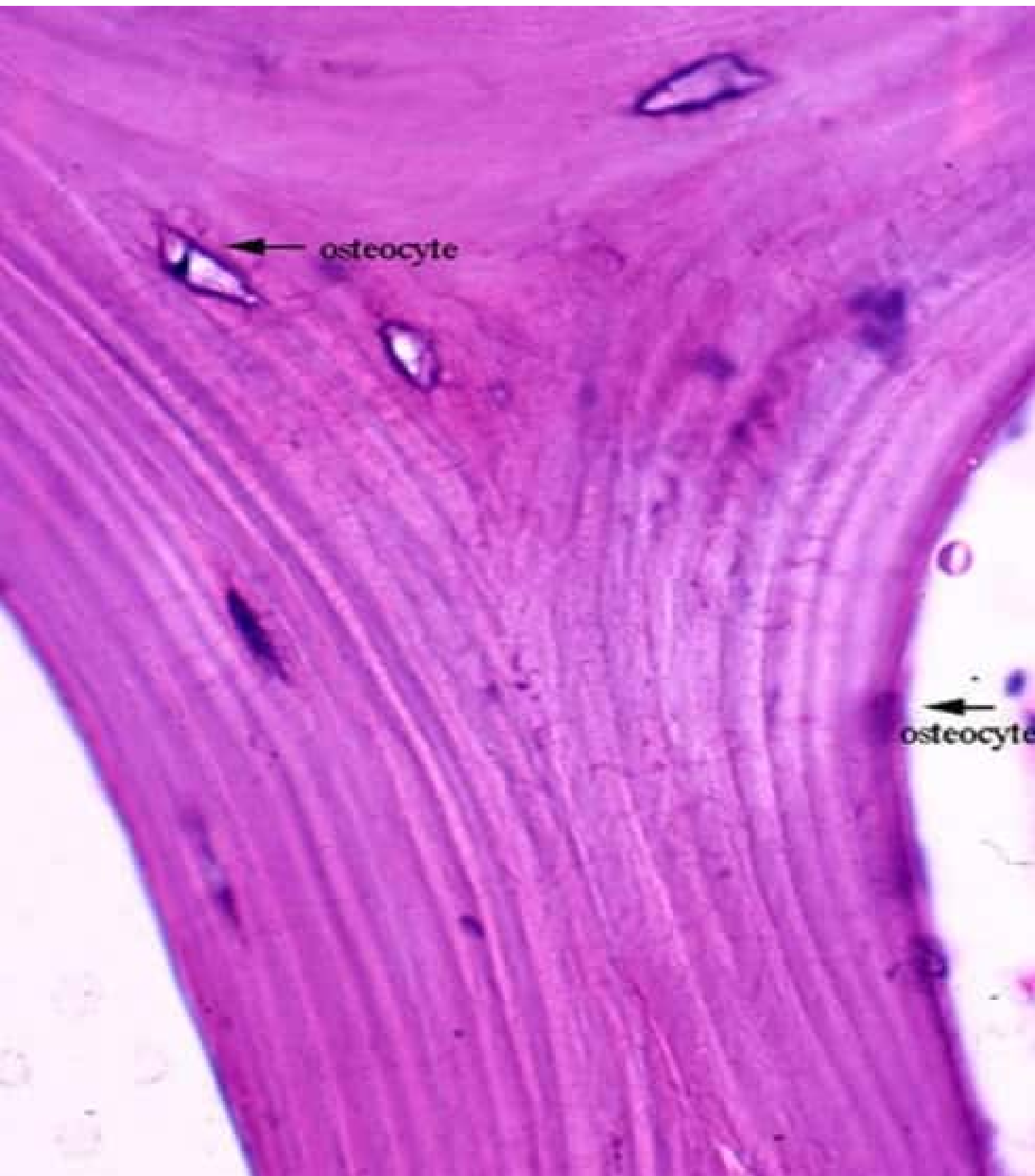




resorption
bay

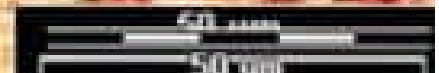
osteoclast

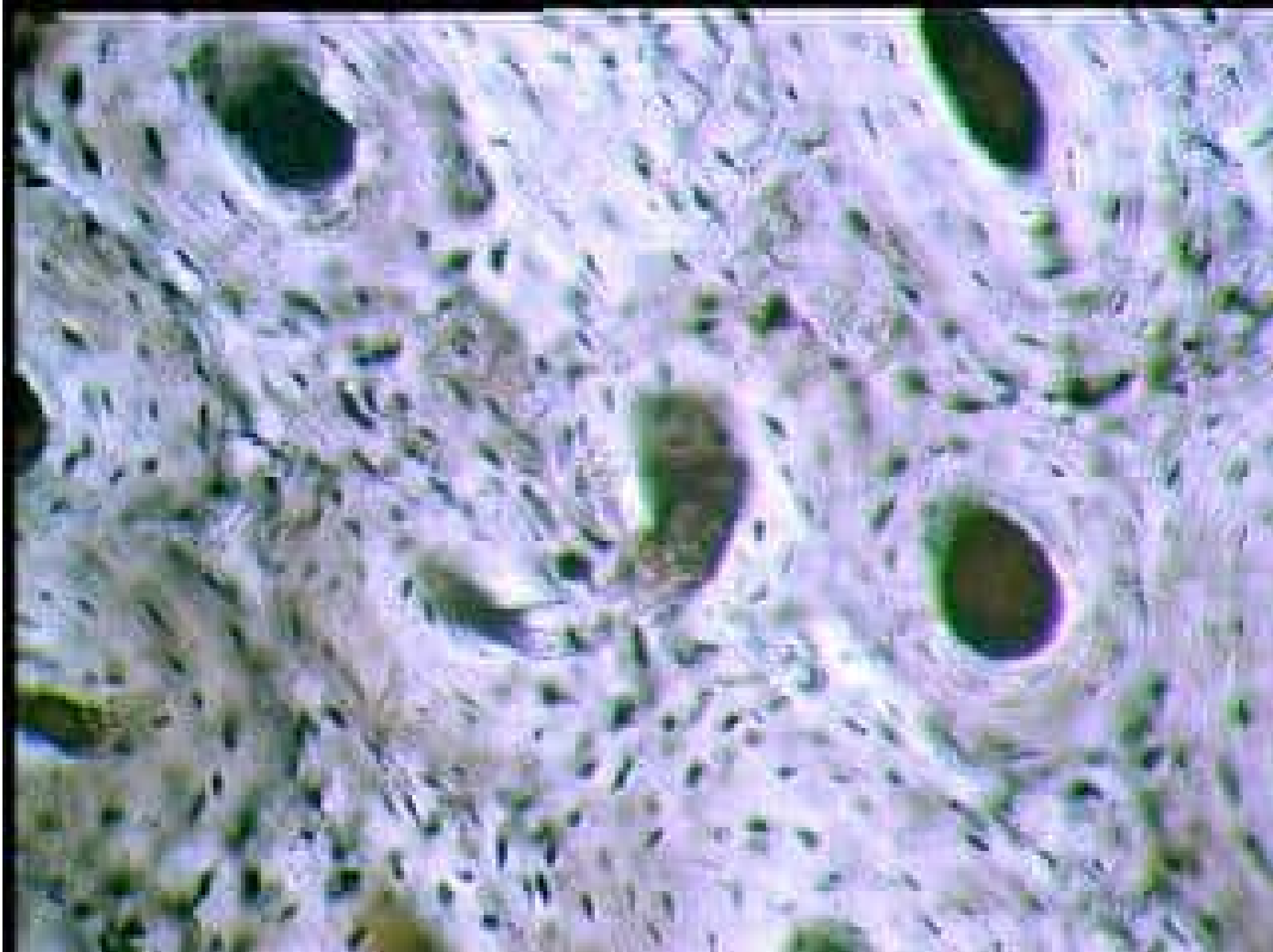
bone

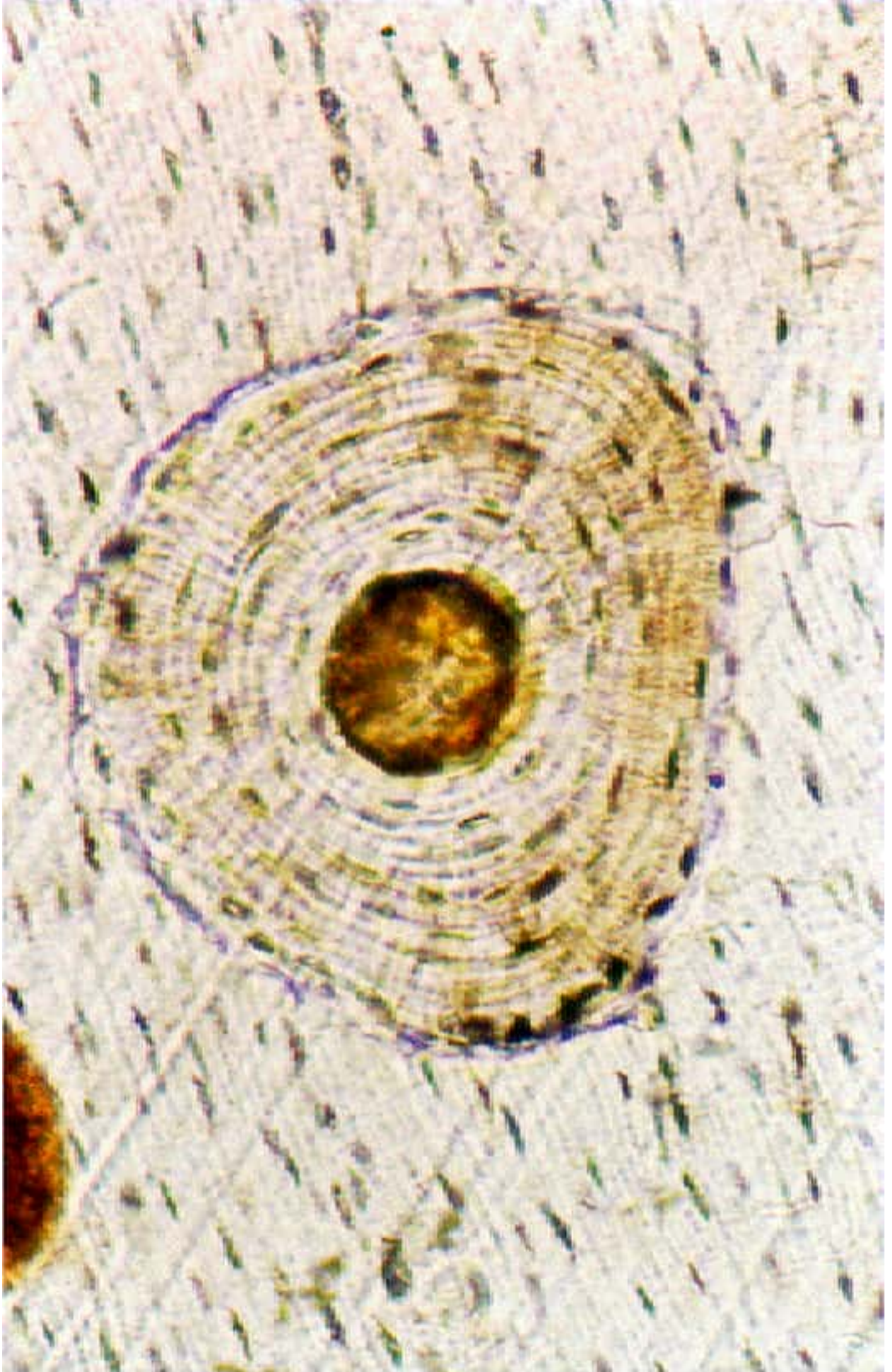




Lamellar bone
Osteocytes in lacunae

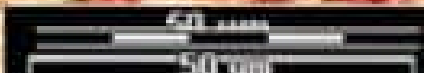


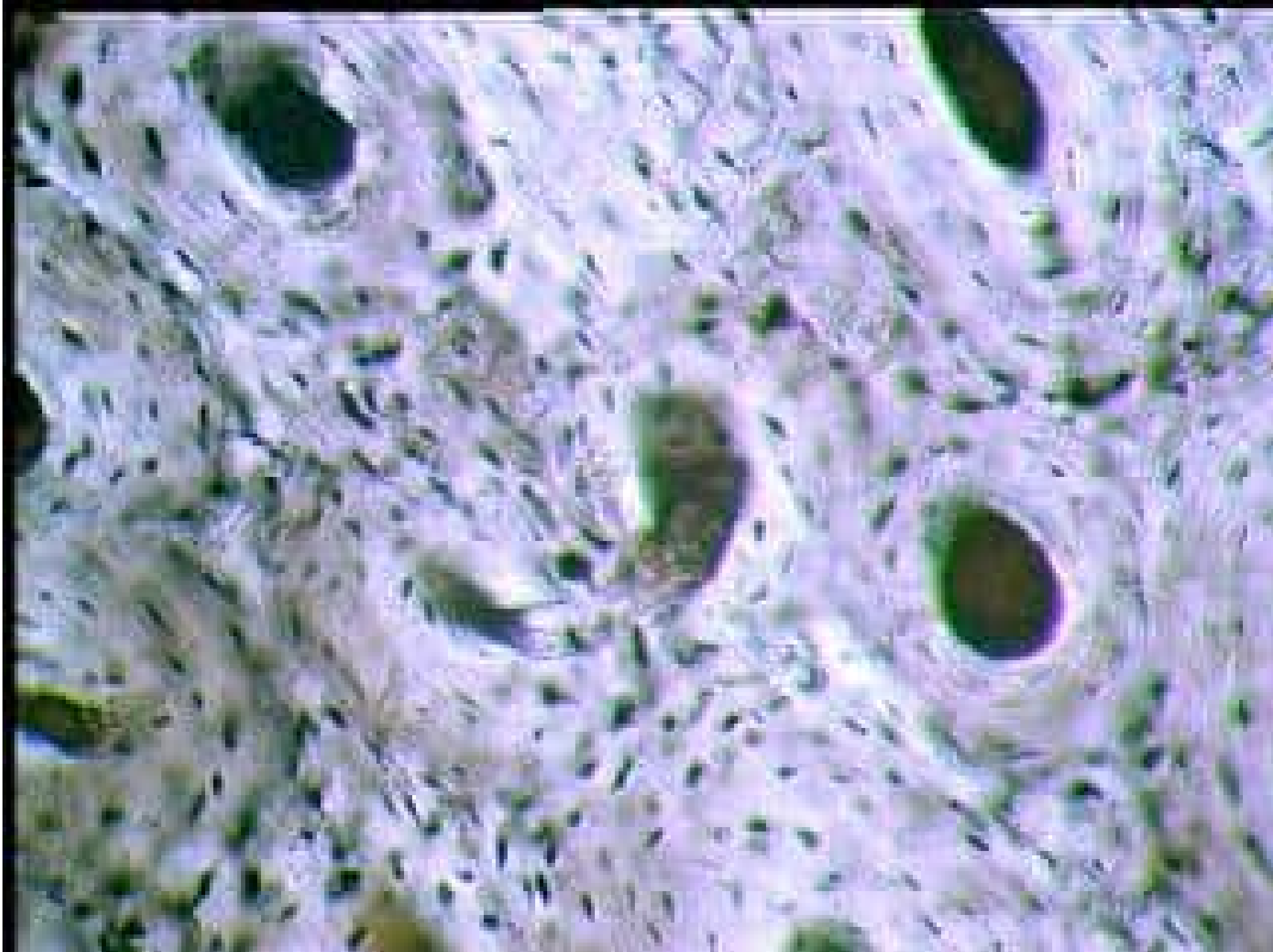


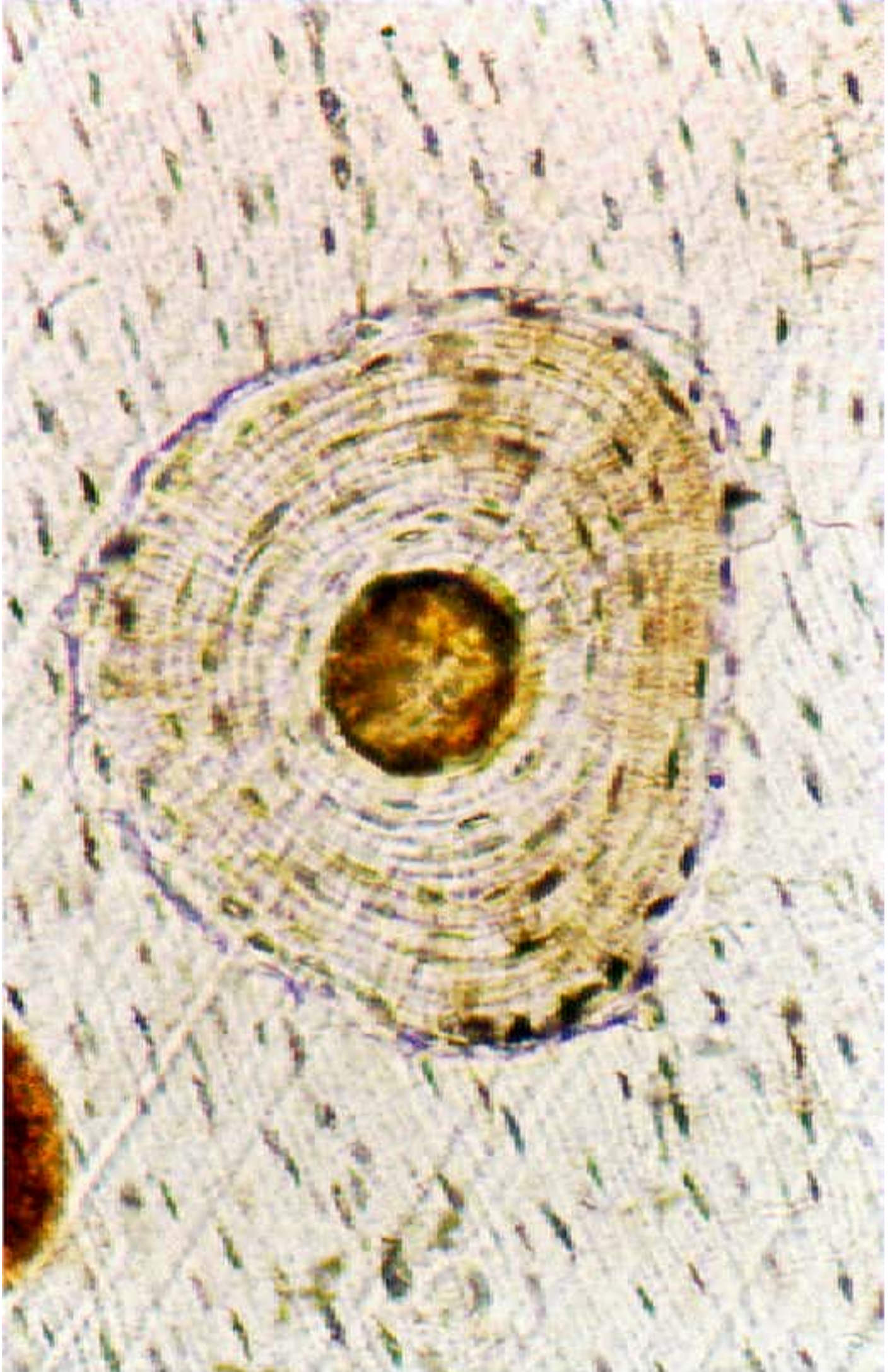




Lamellar bone
Osteocytes in lacunae







Compact Bone ground
iris diaphragm open

lacunae

canaliculi

Haversian canal



