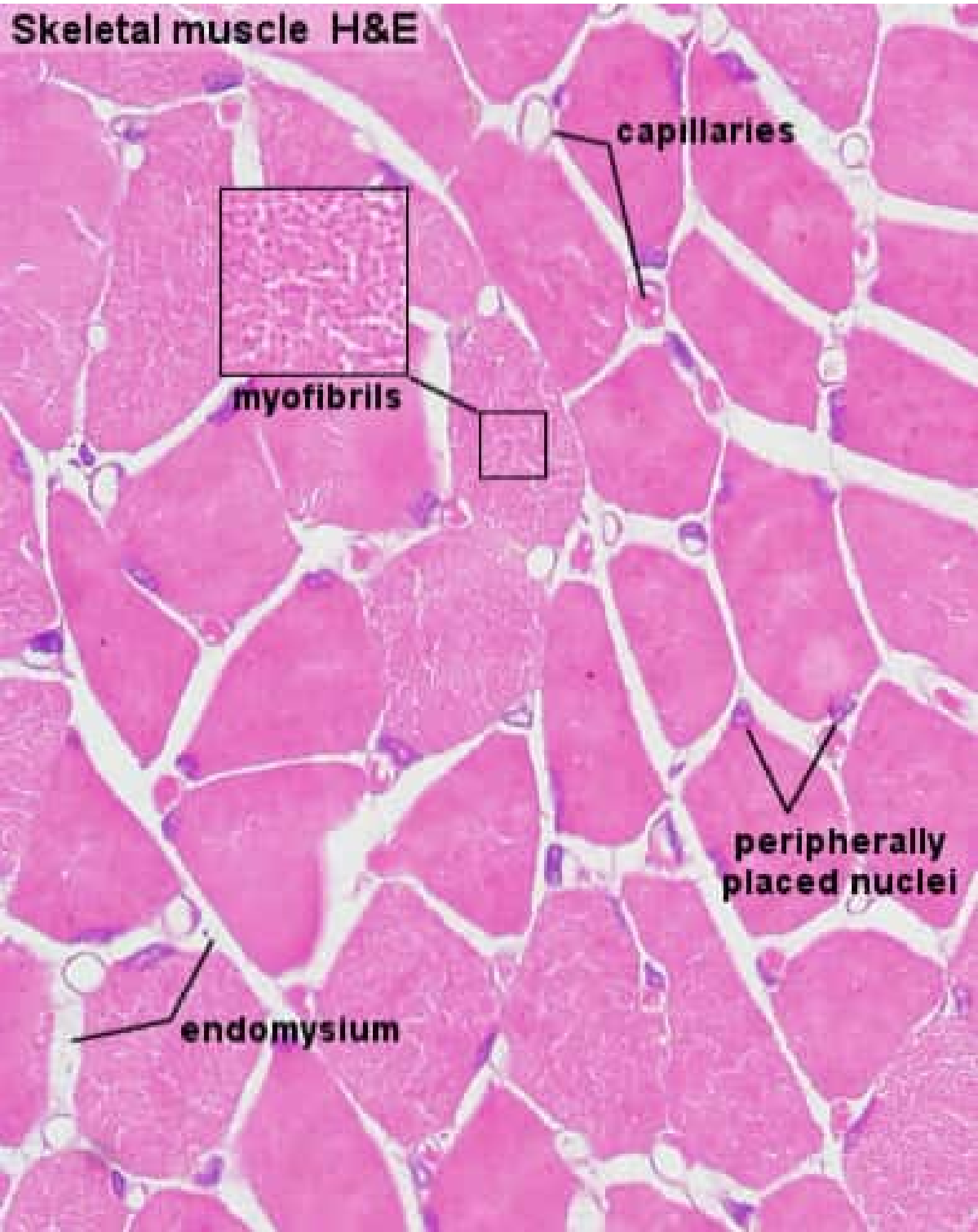
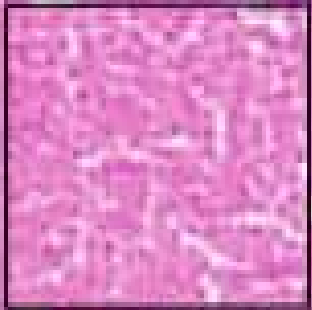


Skeletal muscle H&E



capillaries



myofibrils

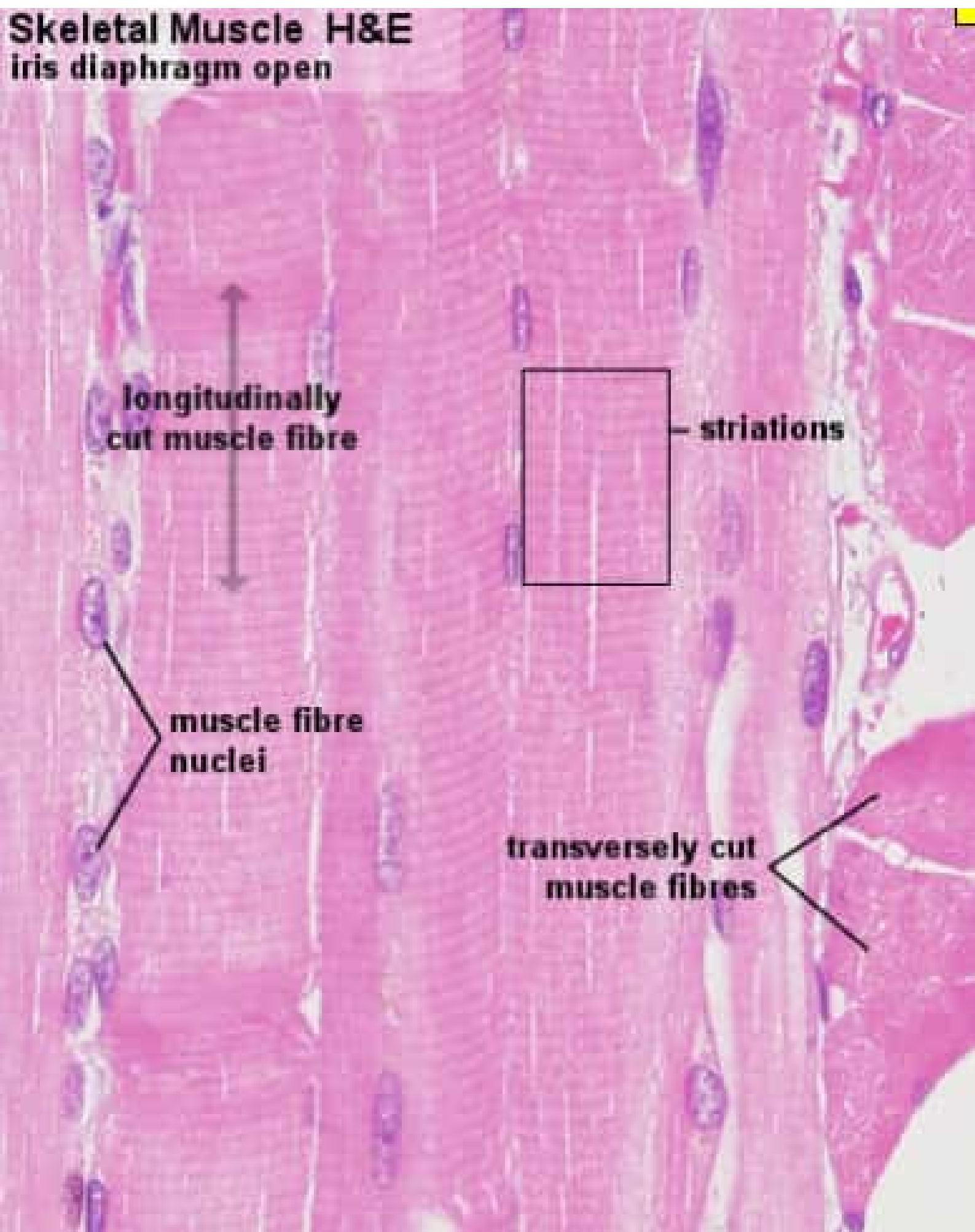


peripherally placed nuclei

endomysium

Skeletal Muscle H&E

iris diaphragm open



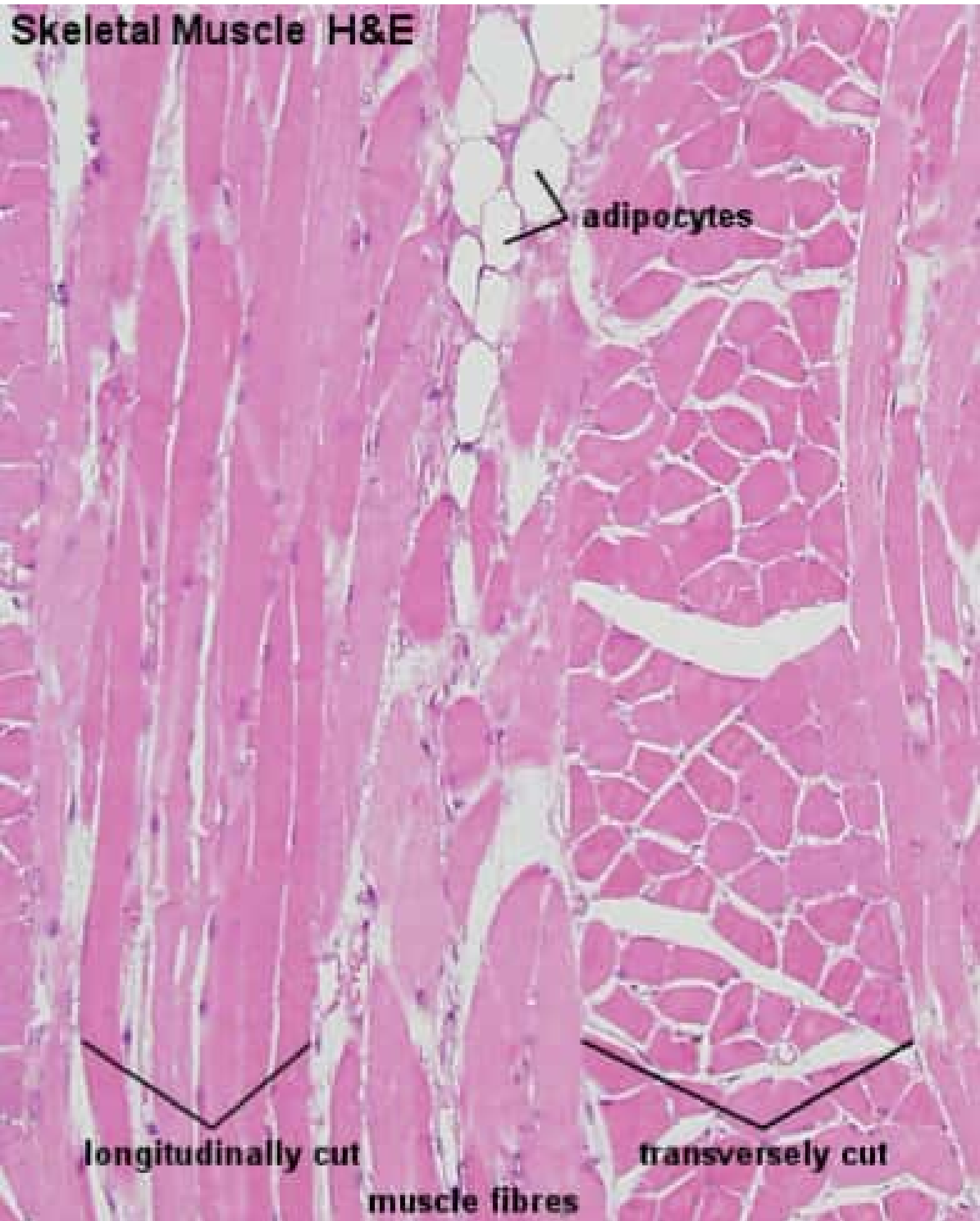
longitudinally
cut muscle fibre

striations

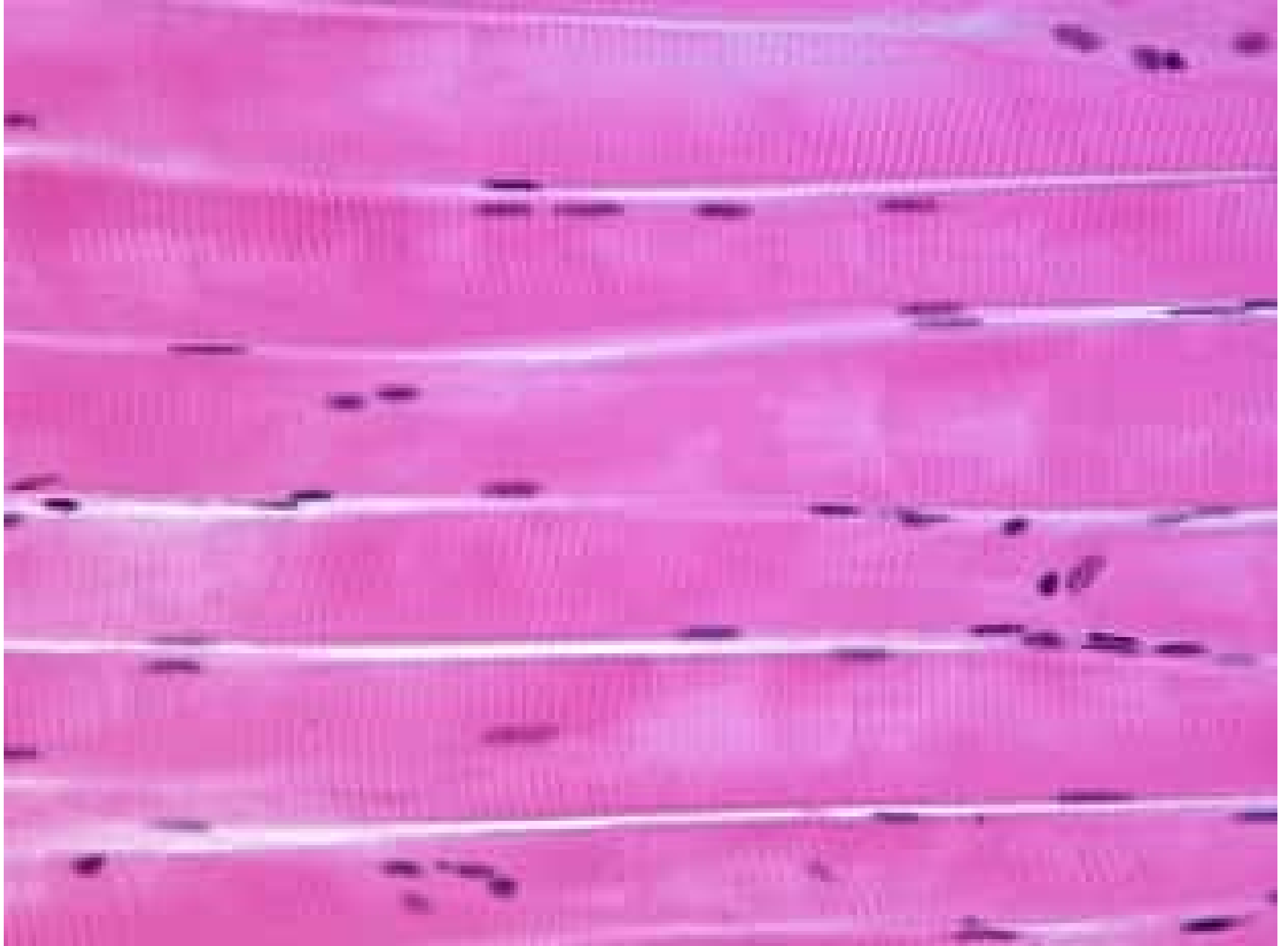
muscle fibre
nuclei

transversely cut
muscle fibres

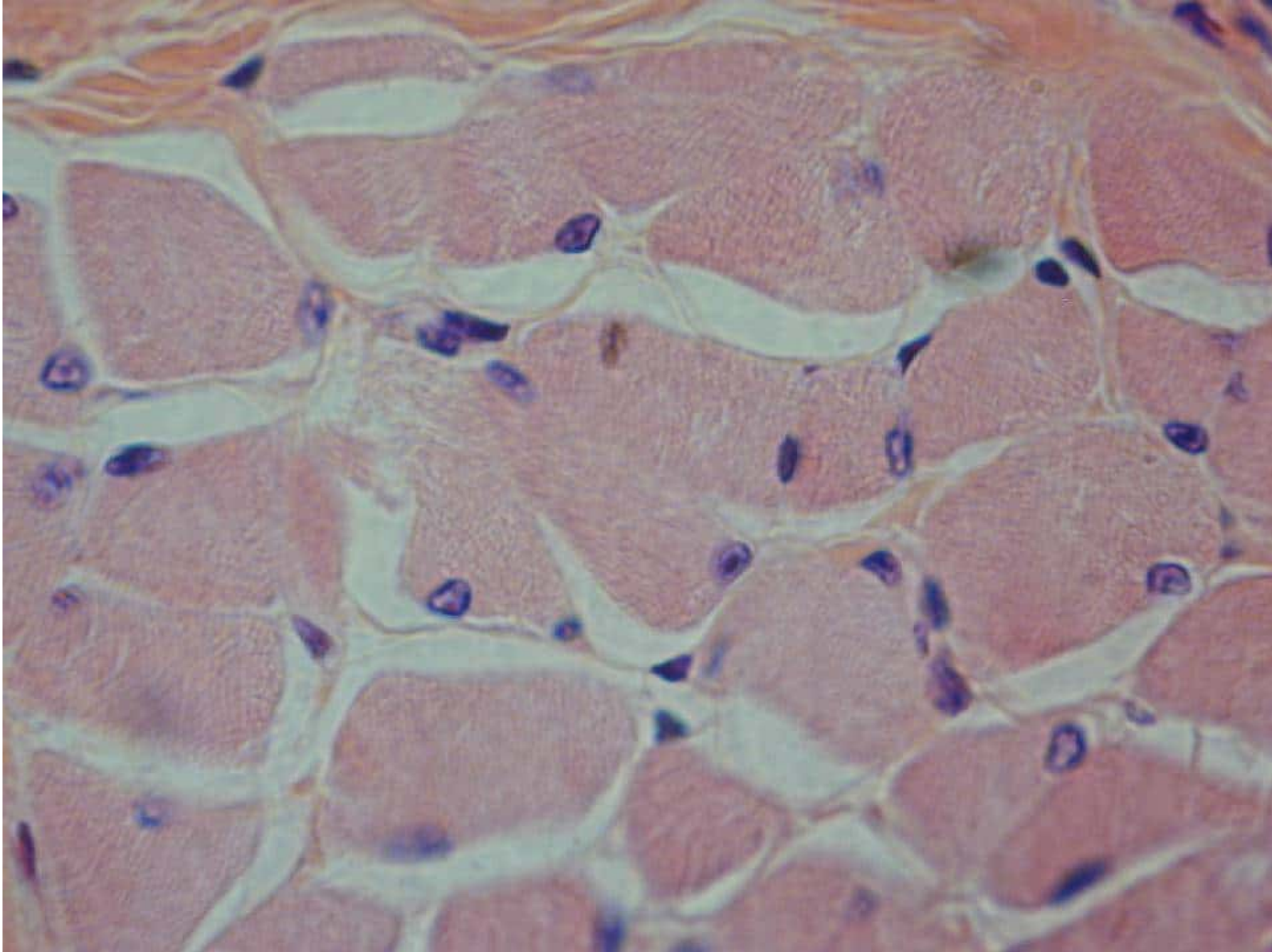
Skeletal Muscle H&E

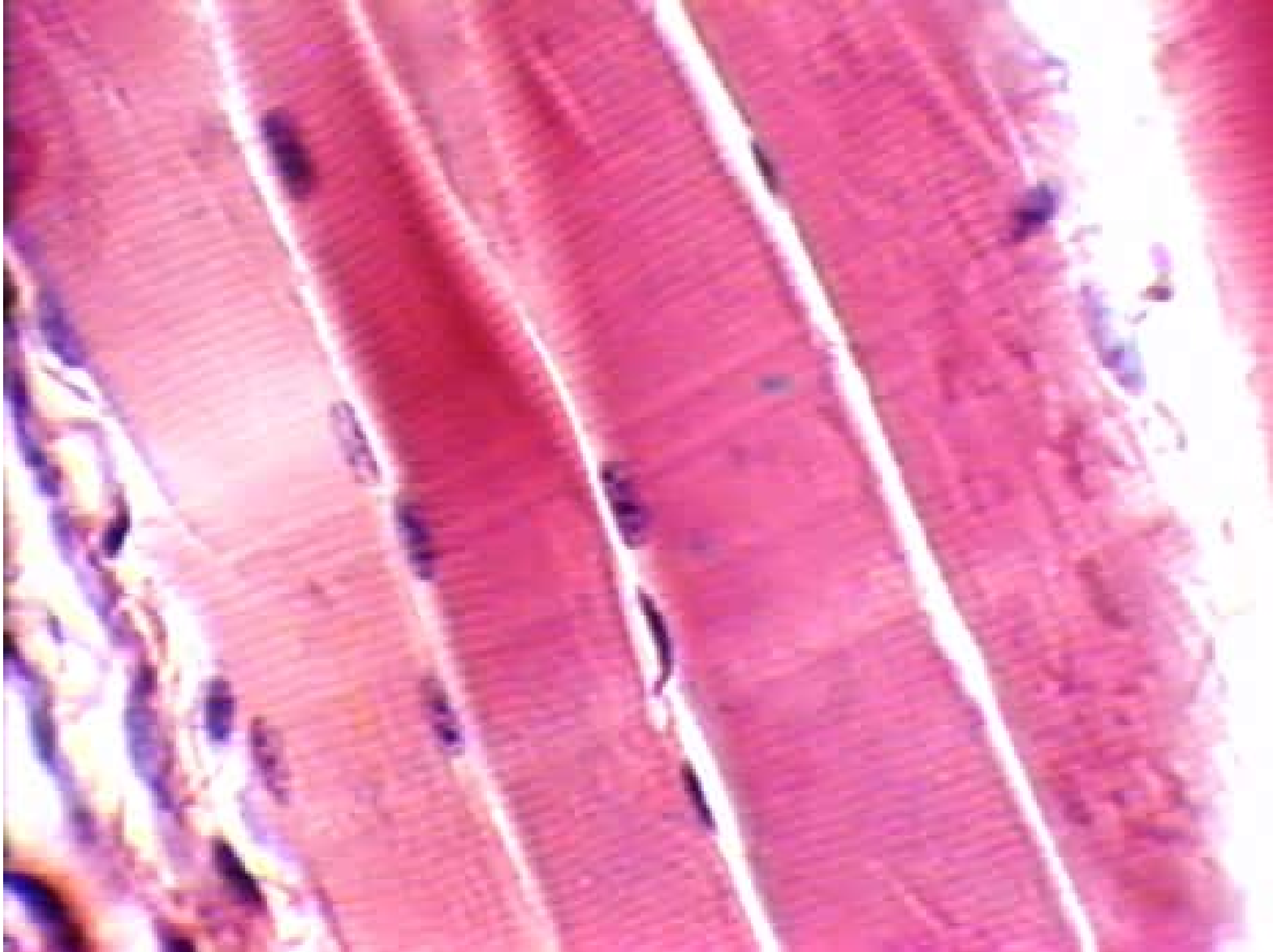


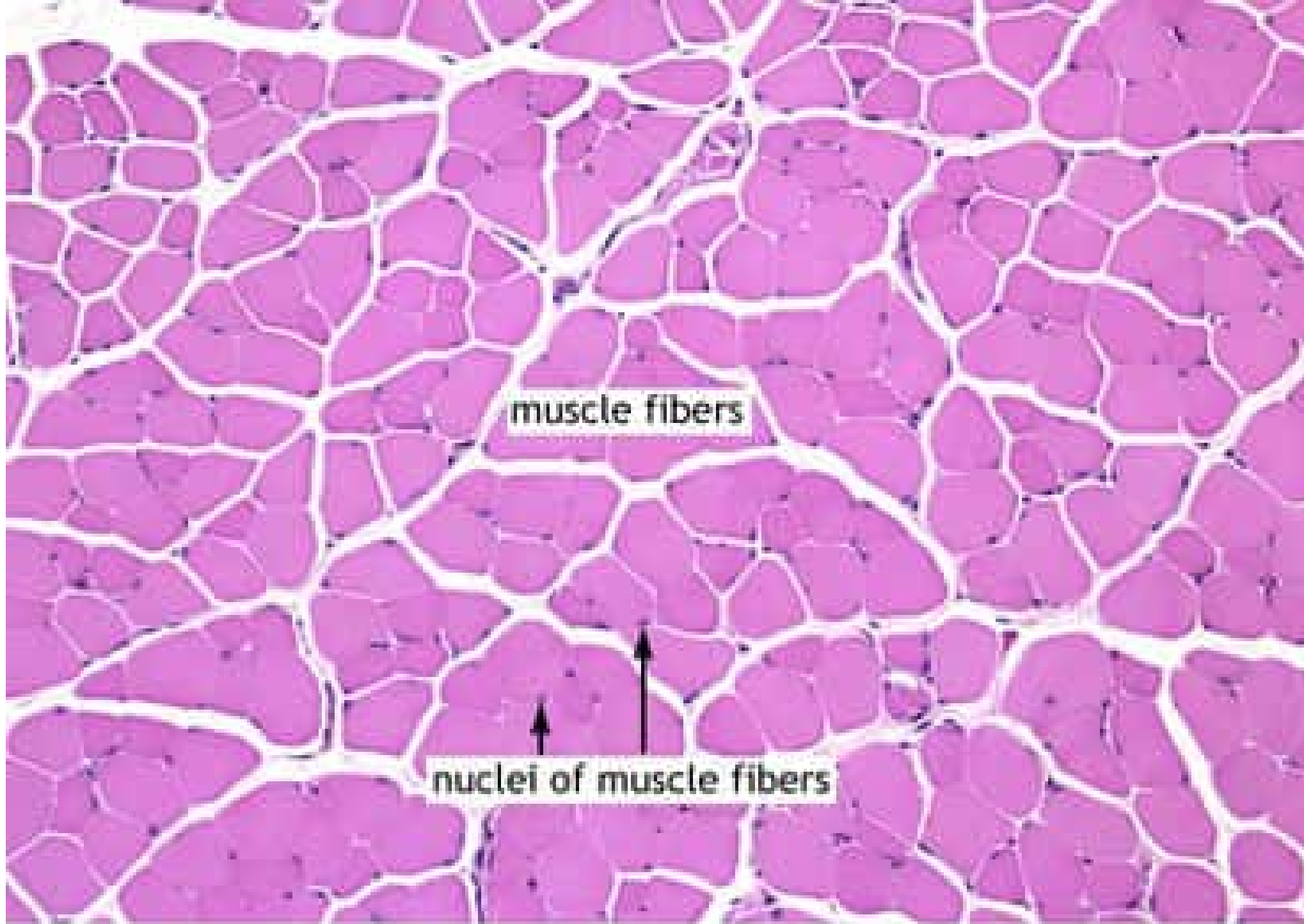












muscle fibers

nuclei of muscle fibers

