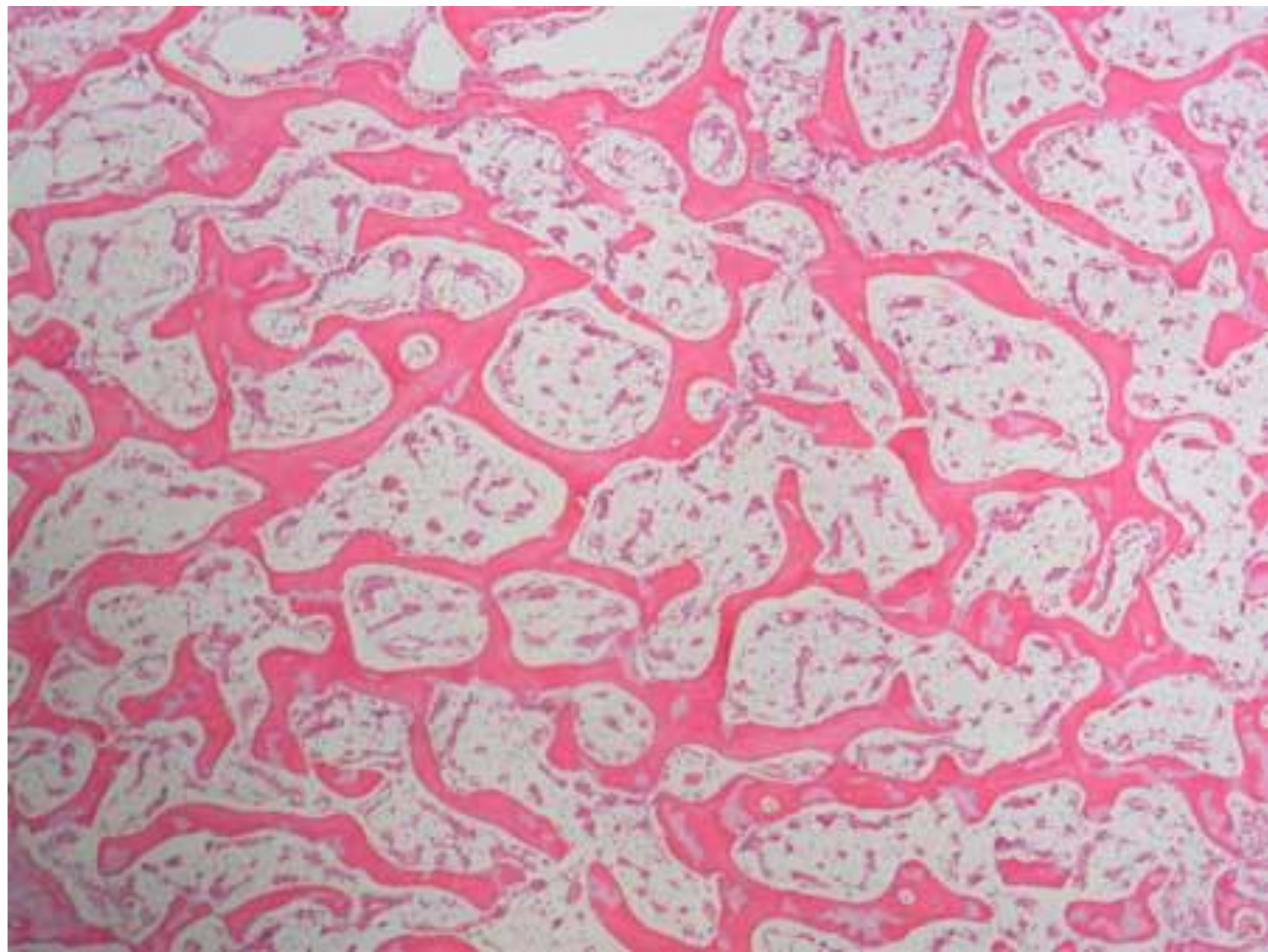
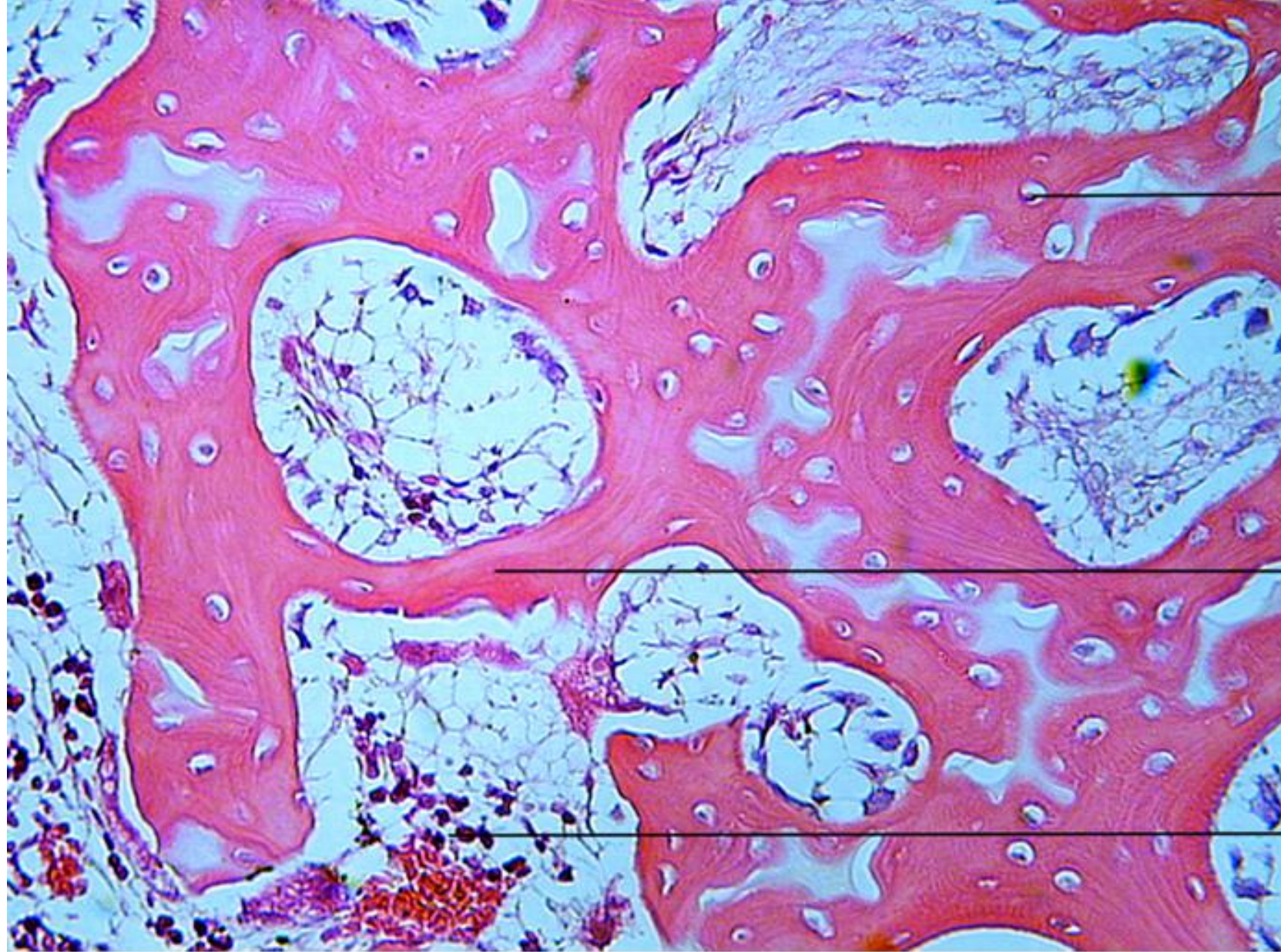


BONE



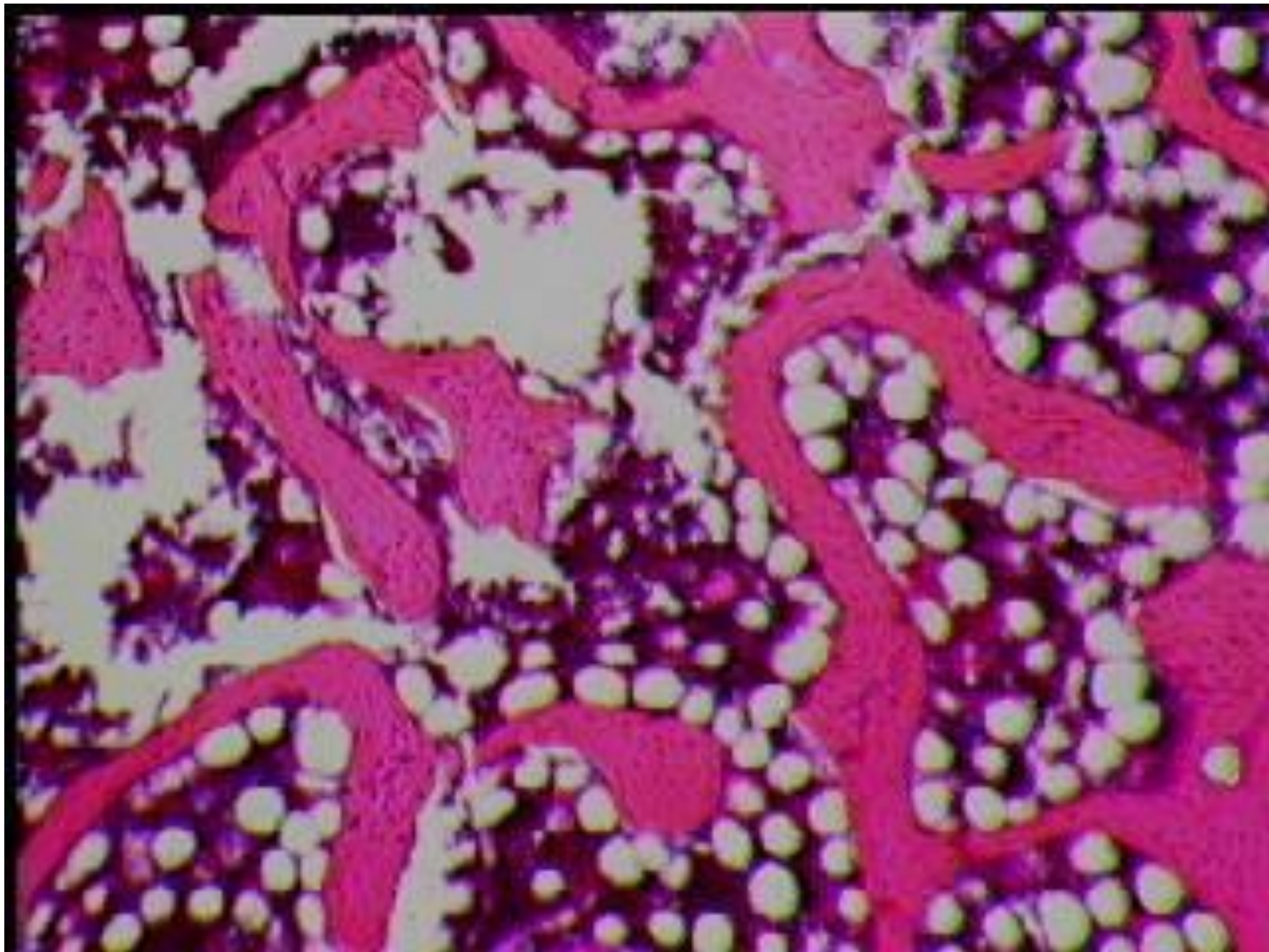


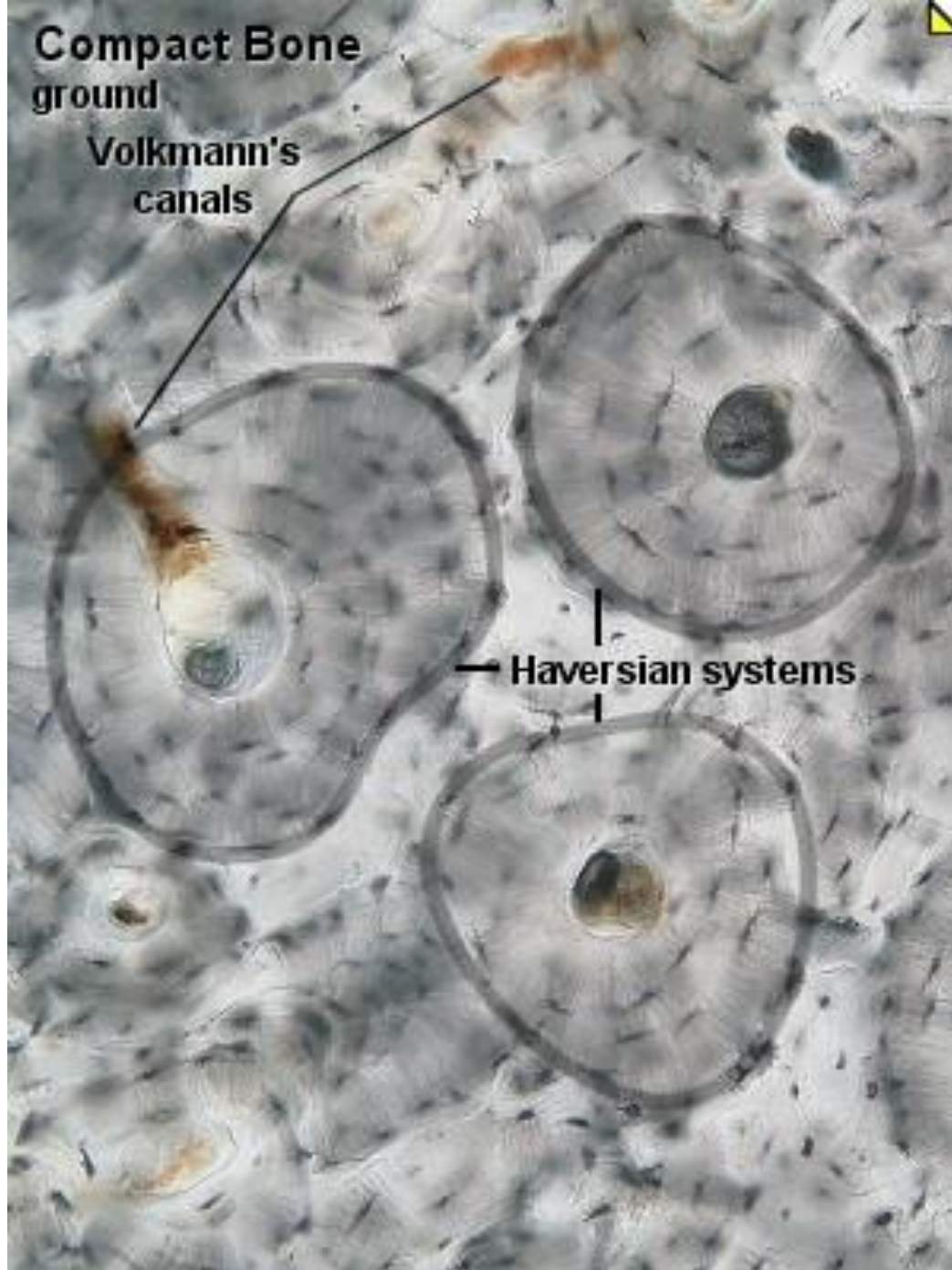
Osteocyte

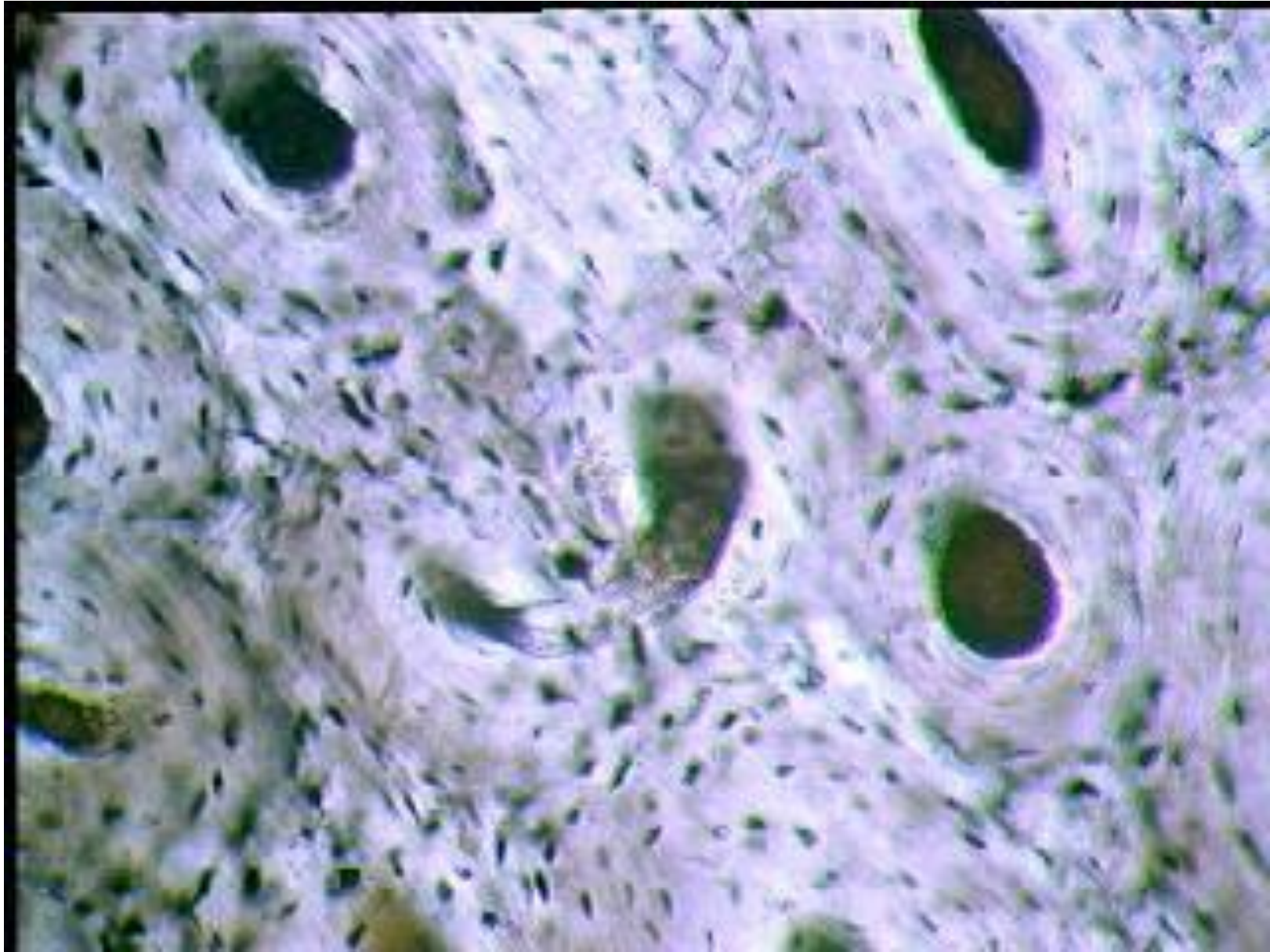
Trabecula

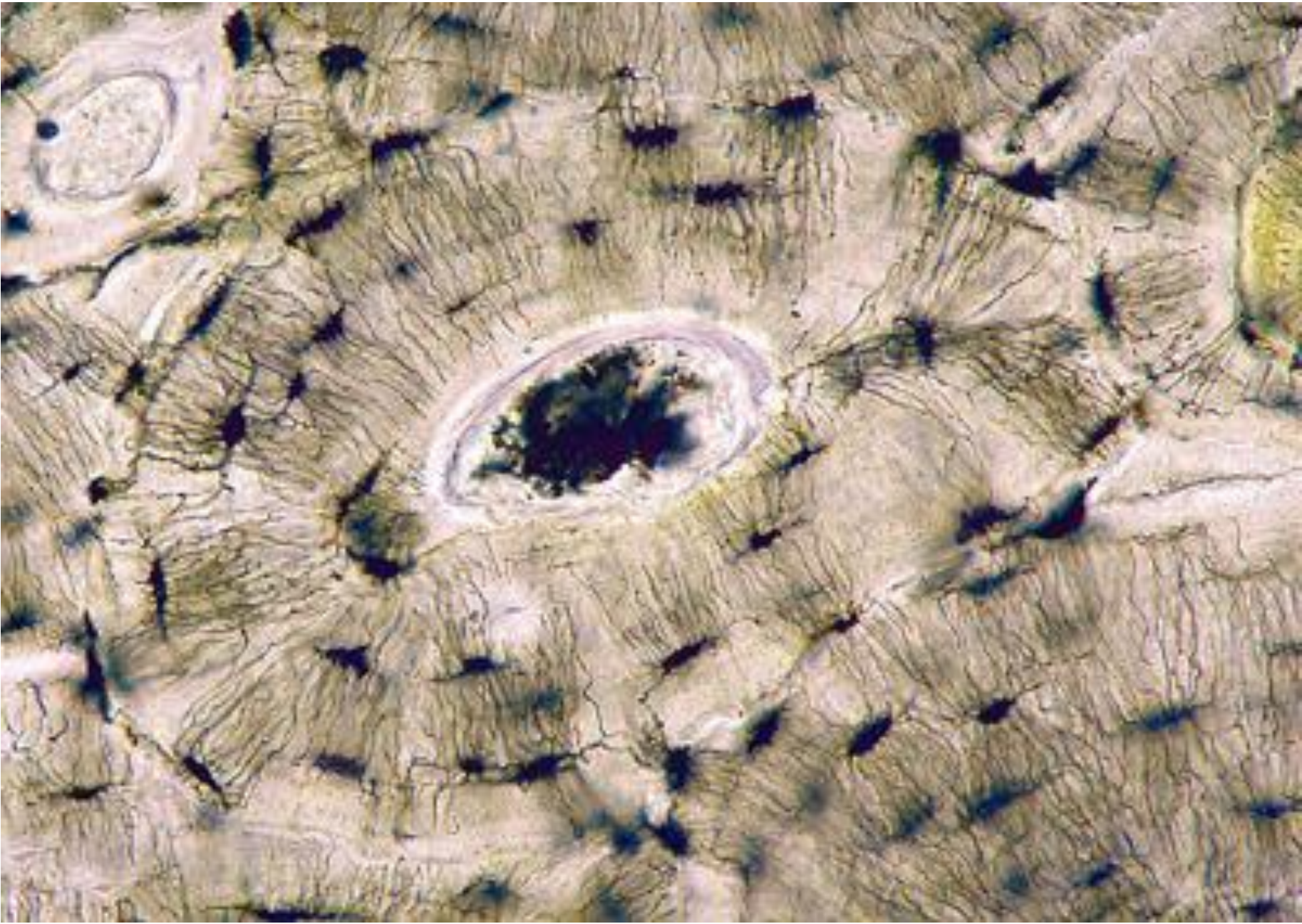
Red bone
Marrow


Cancellous (Spongy) Bone (400x)










A high-magnification micrograph showing a central circular opening surrounded by concentric, textured layers. The layers appear fibrous and have a brownish-tan color. The overall structure resembles a cross-section of a biological specimen, possibly a seed or a small animal's head, with a central cavity.

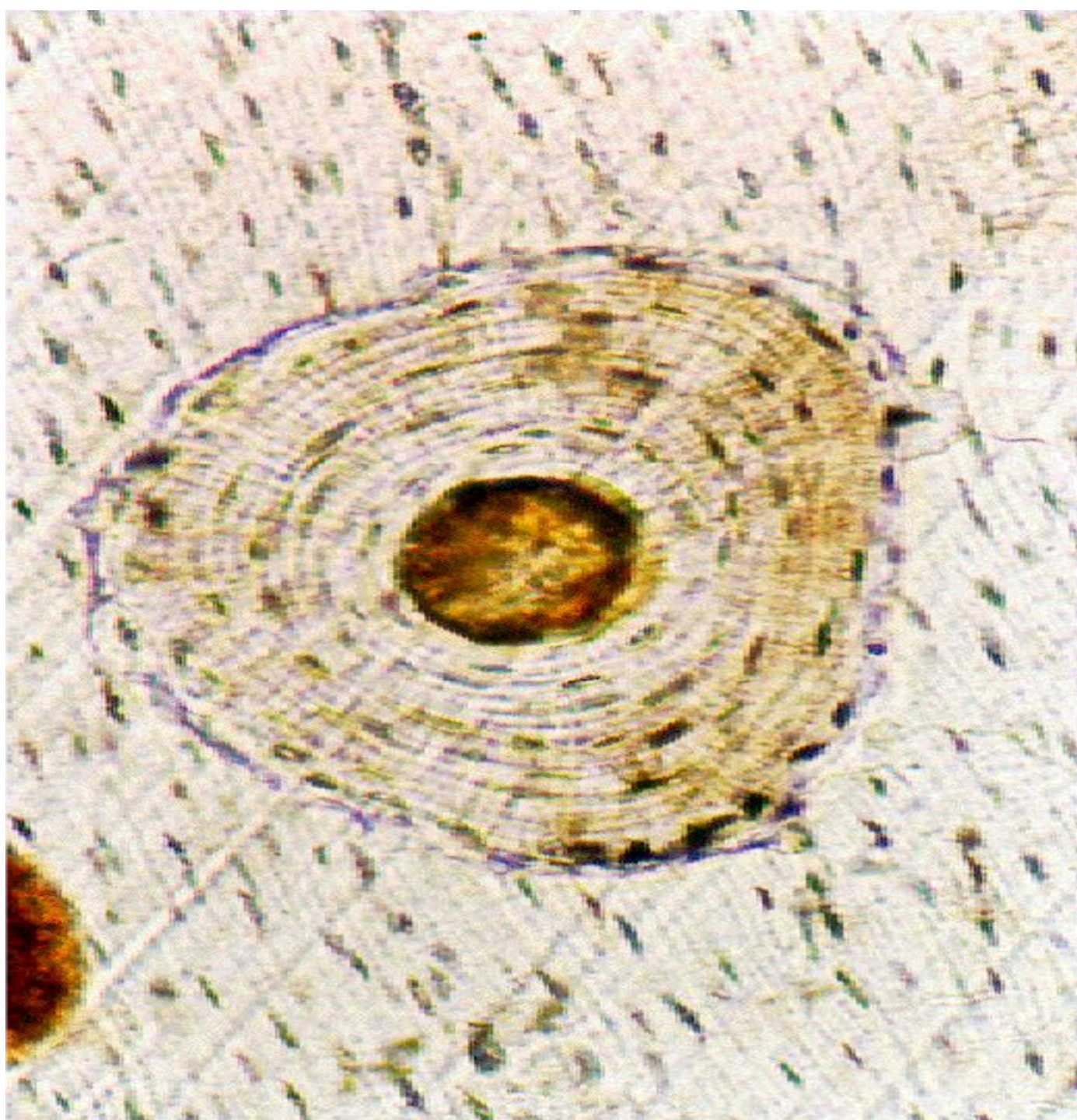
[gty.im/
156850339](http://gty.im/156850339)

By
Visuals Unlimited,
Inc./Scientifica



gty.im/
145094197

By
Visuals Unlimited,
Inc./Dr. Fred Hossler

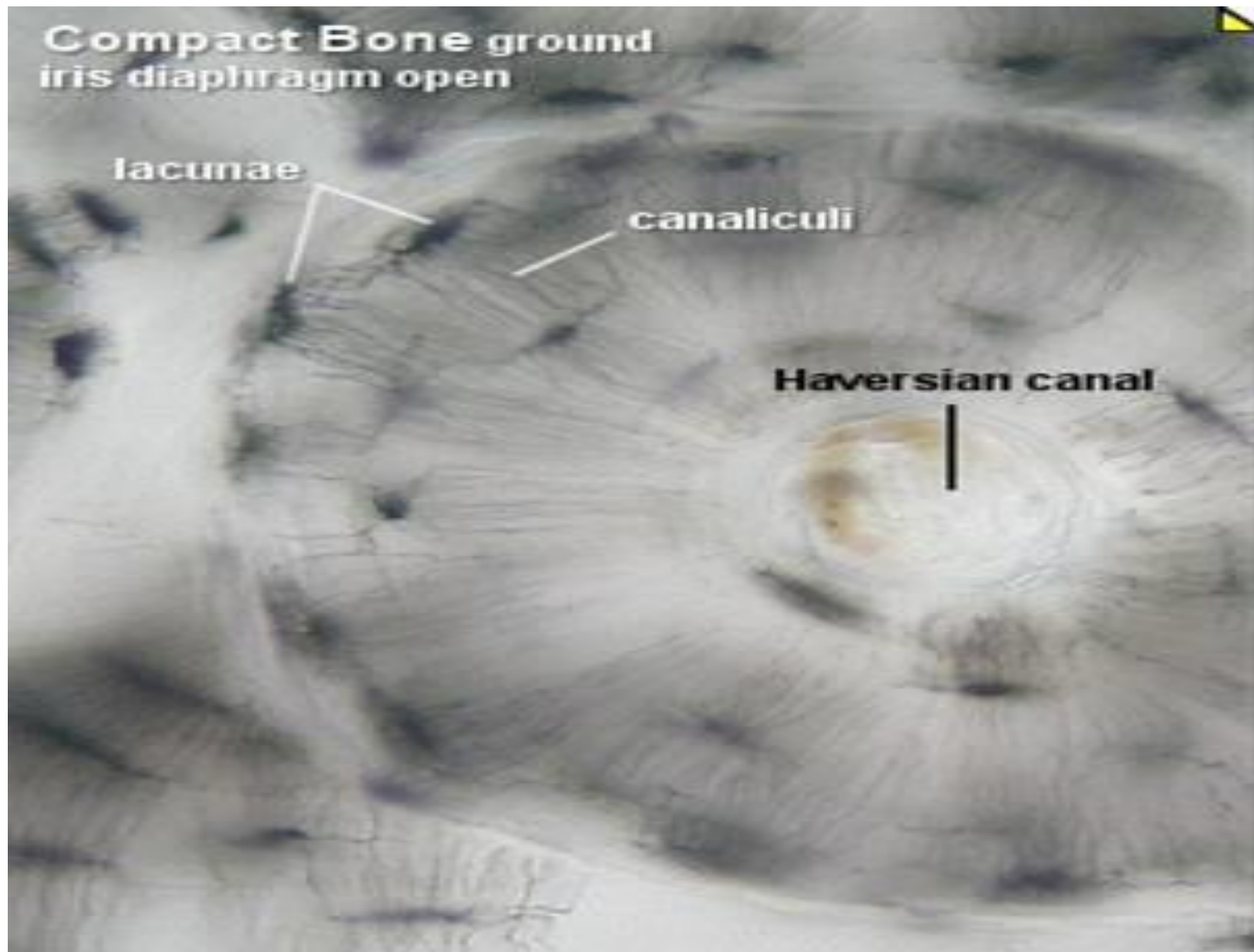


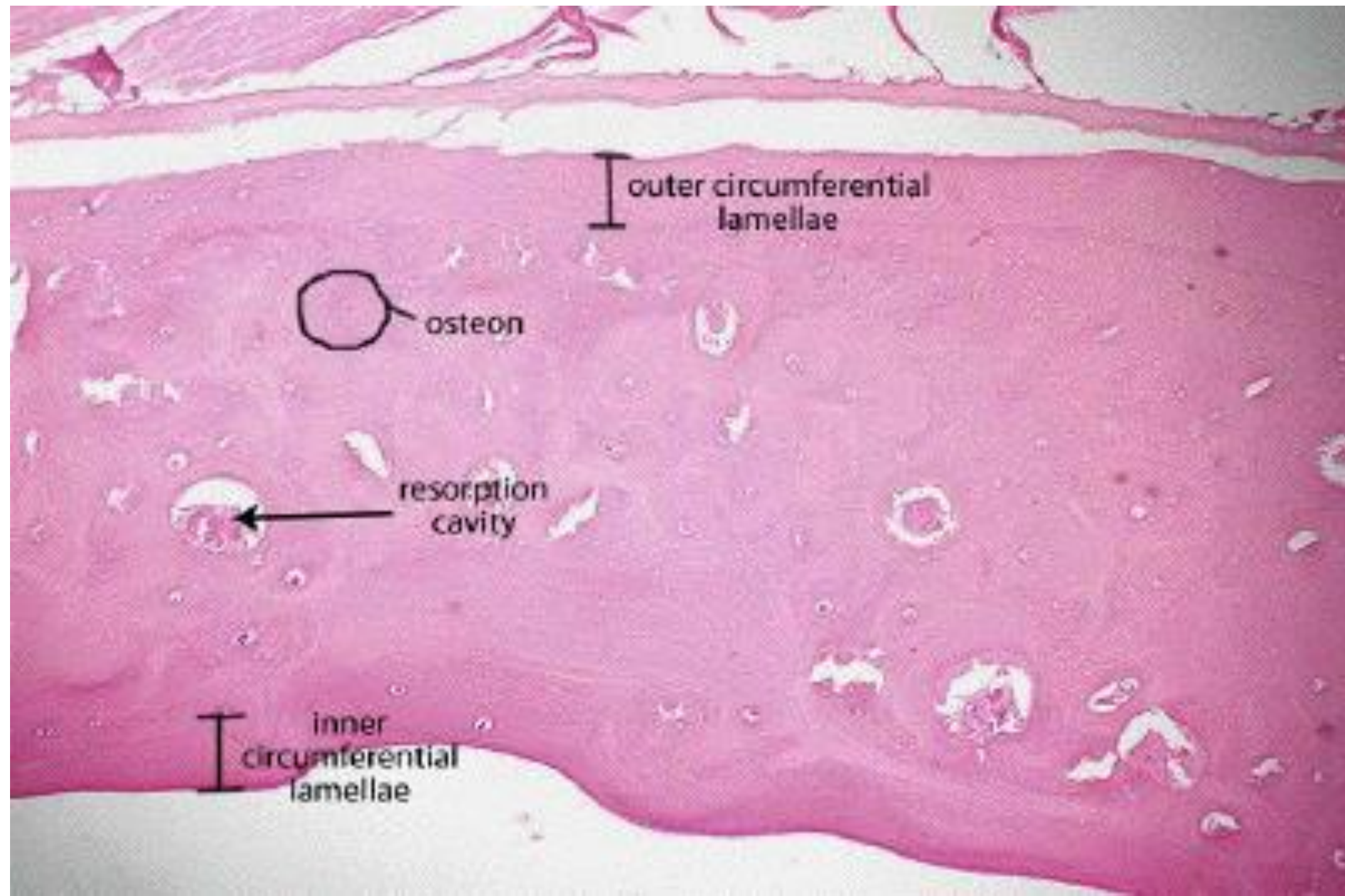
**Compact Bone ground
iris diaphragm open**

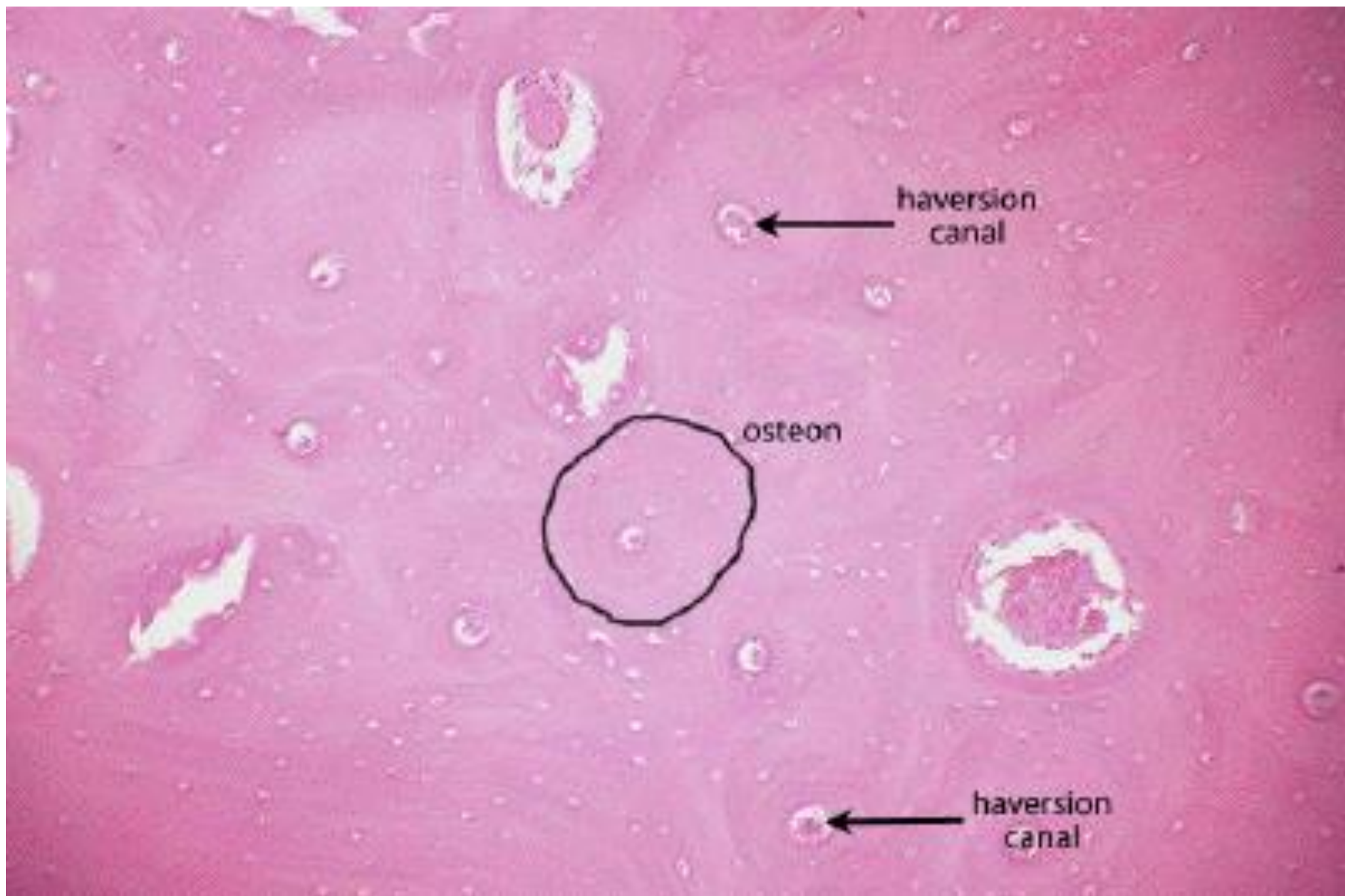
lacunae

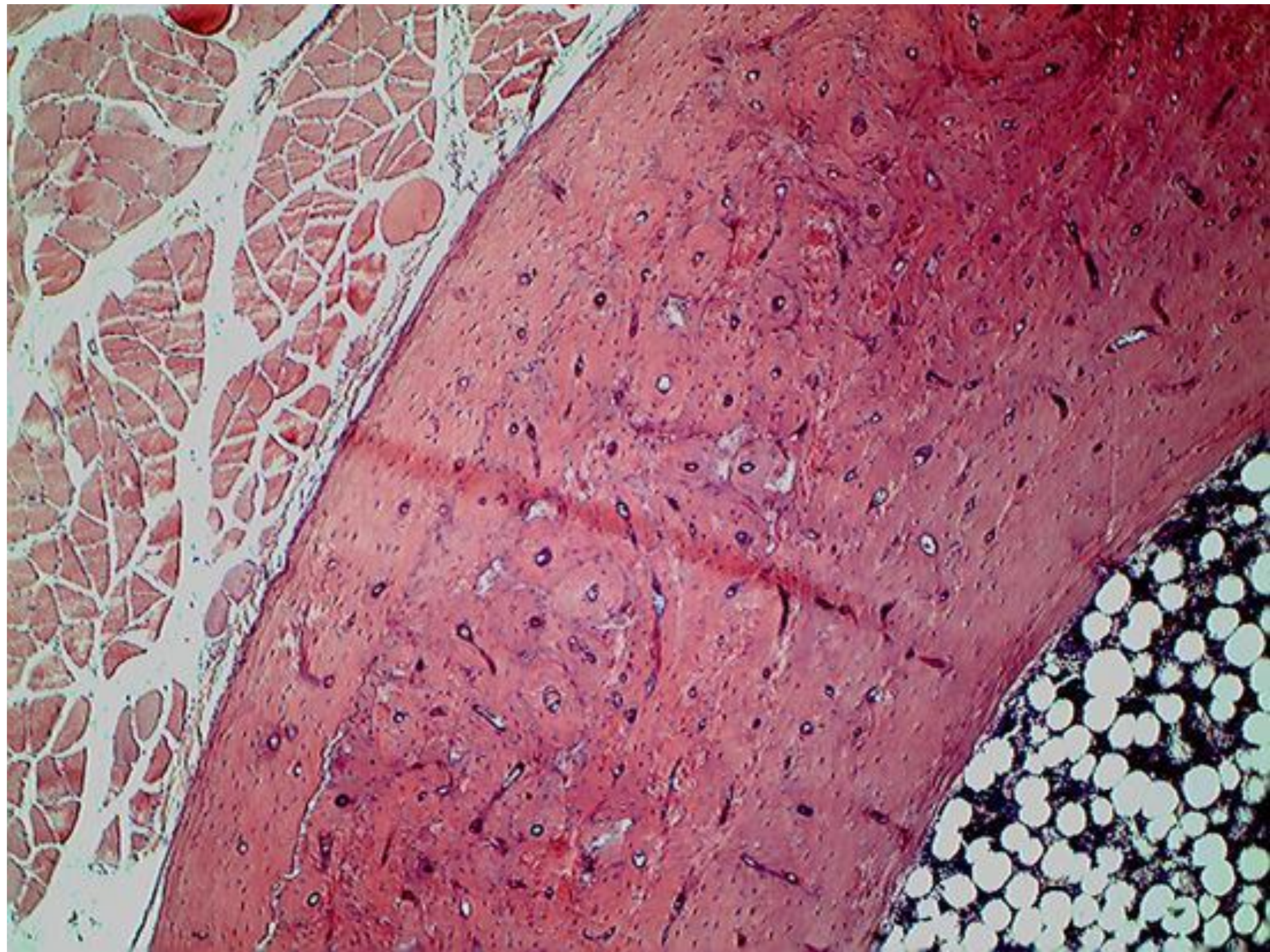
canaliculi

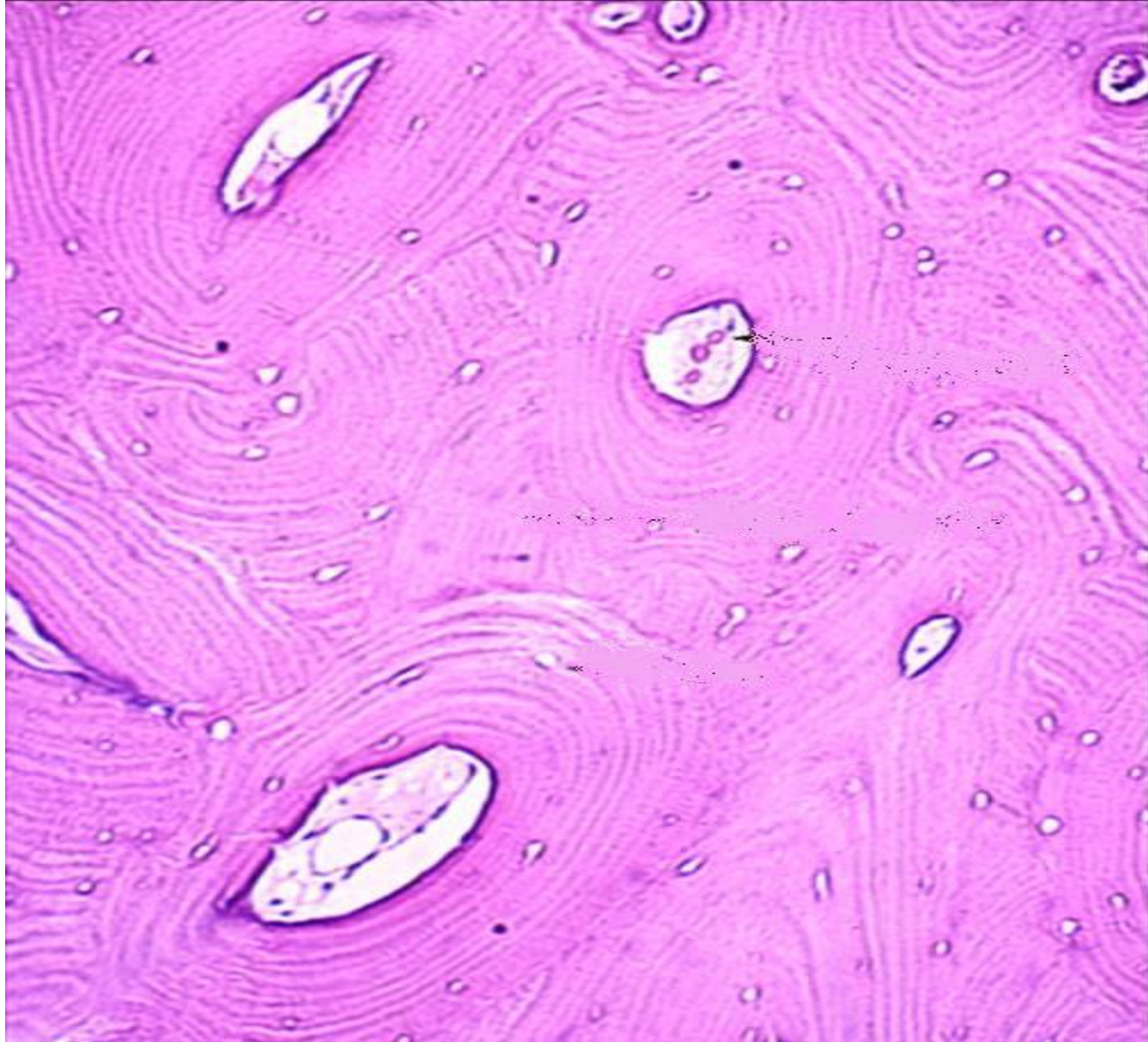
Haversian canal

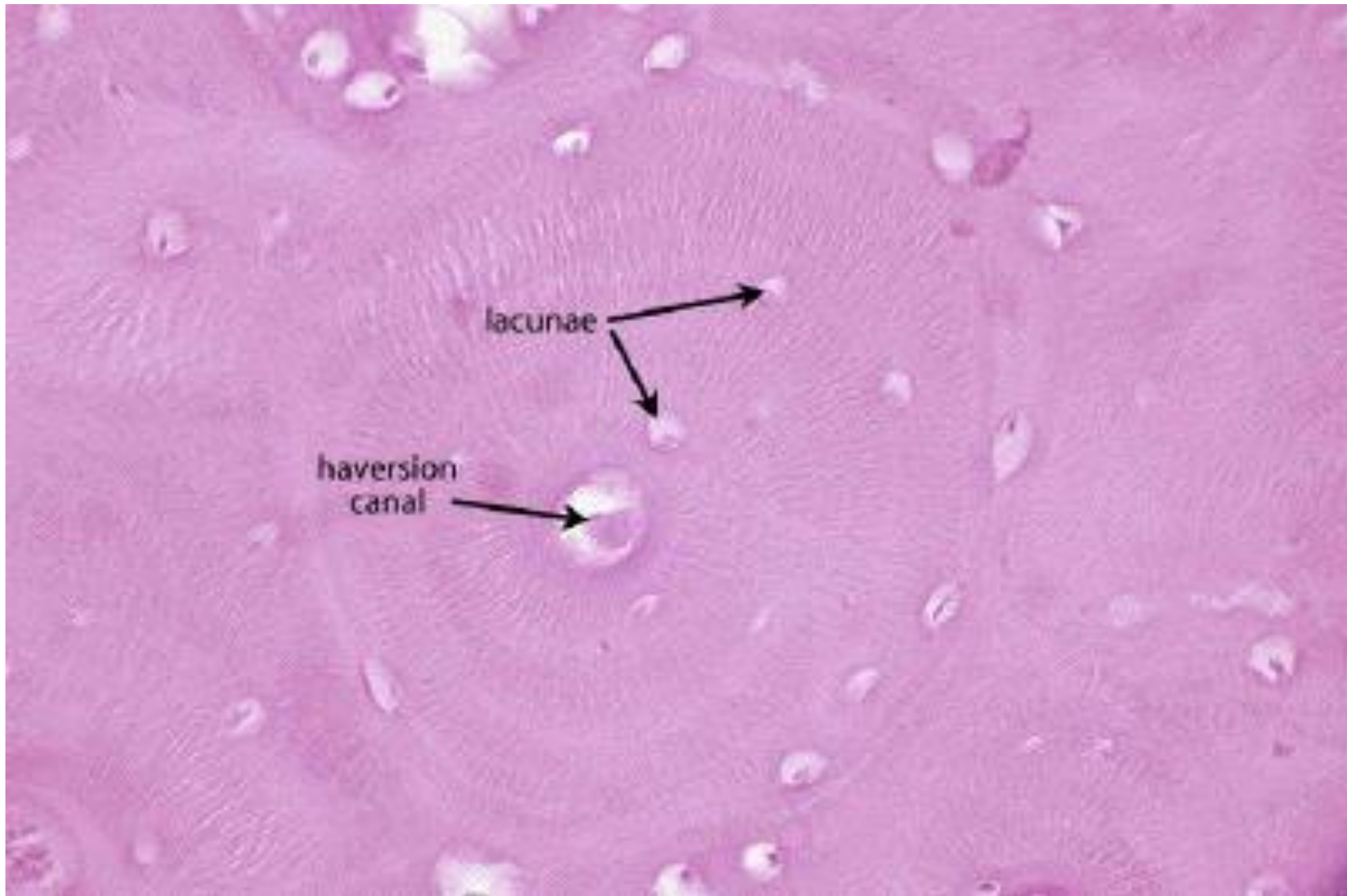


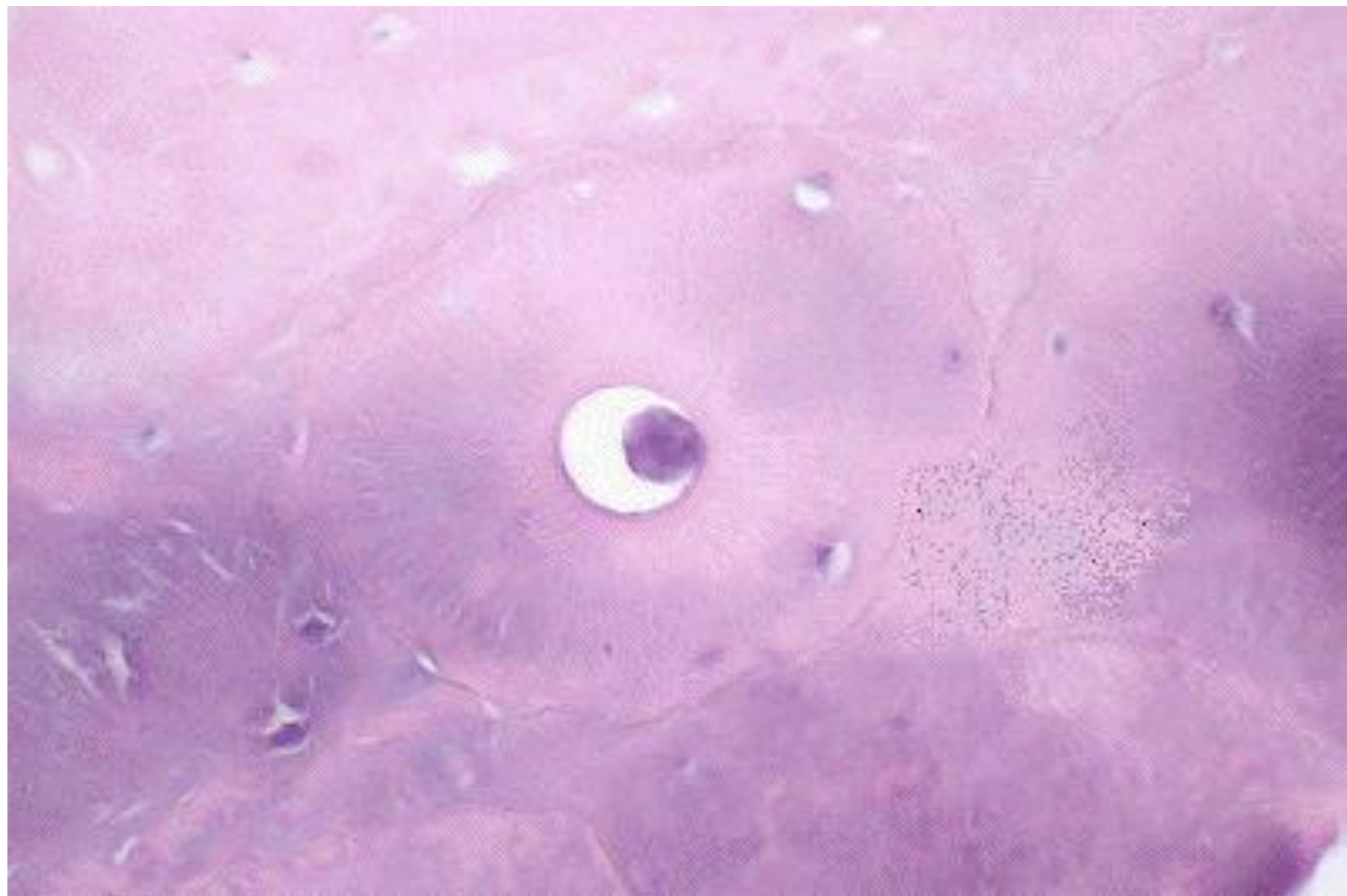








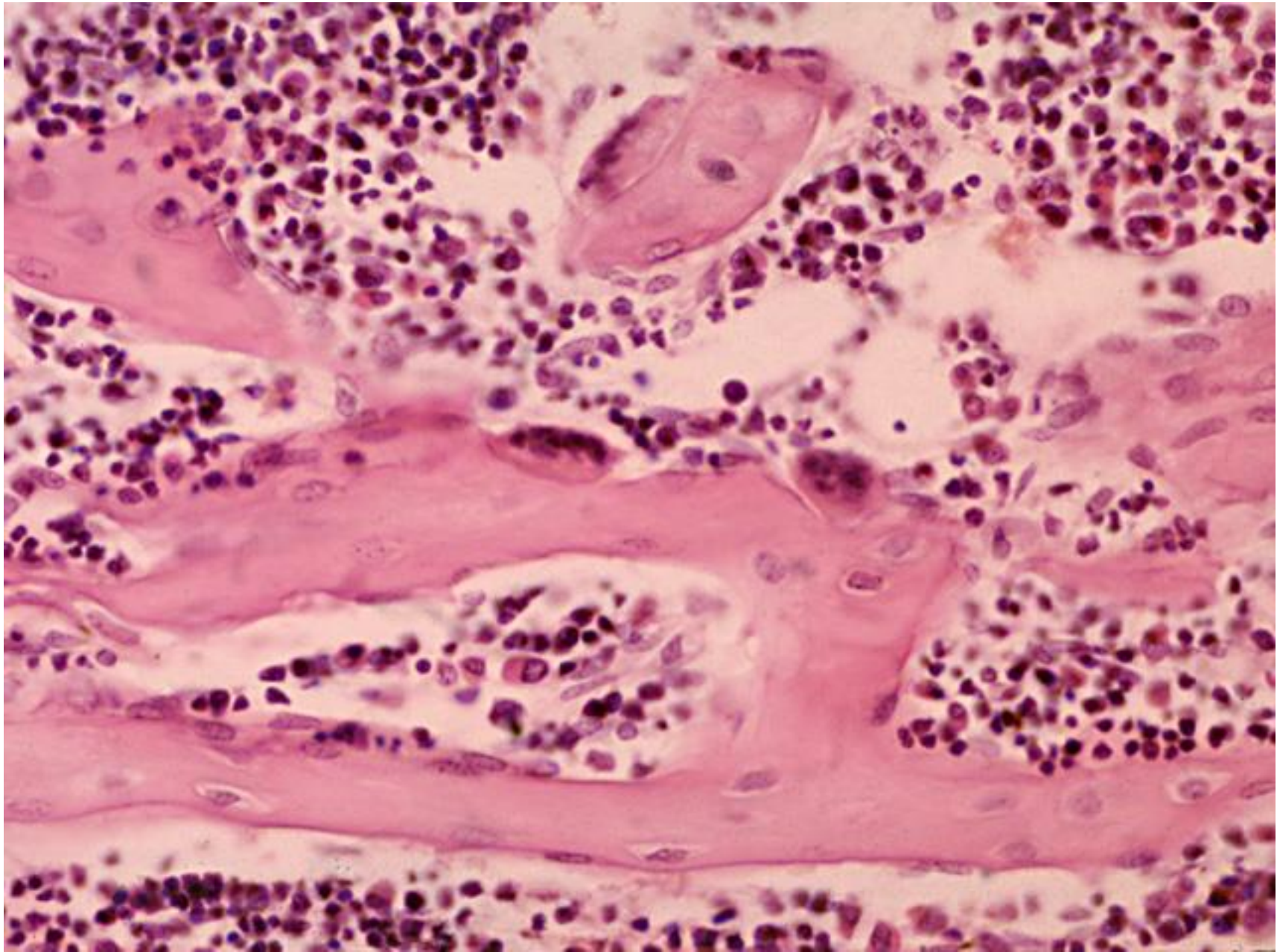


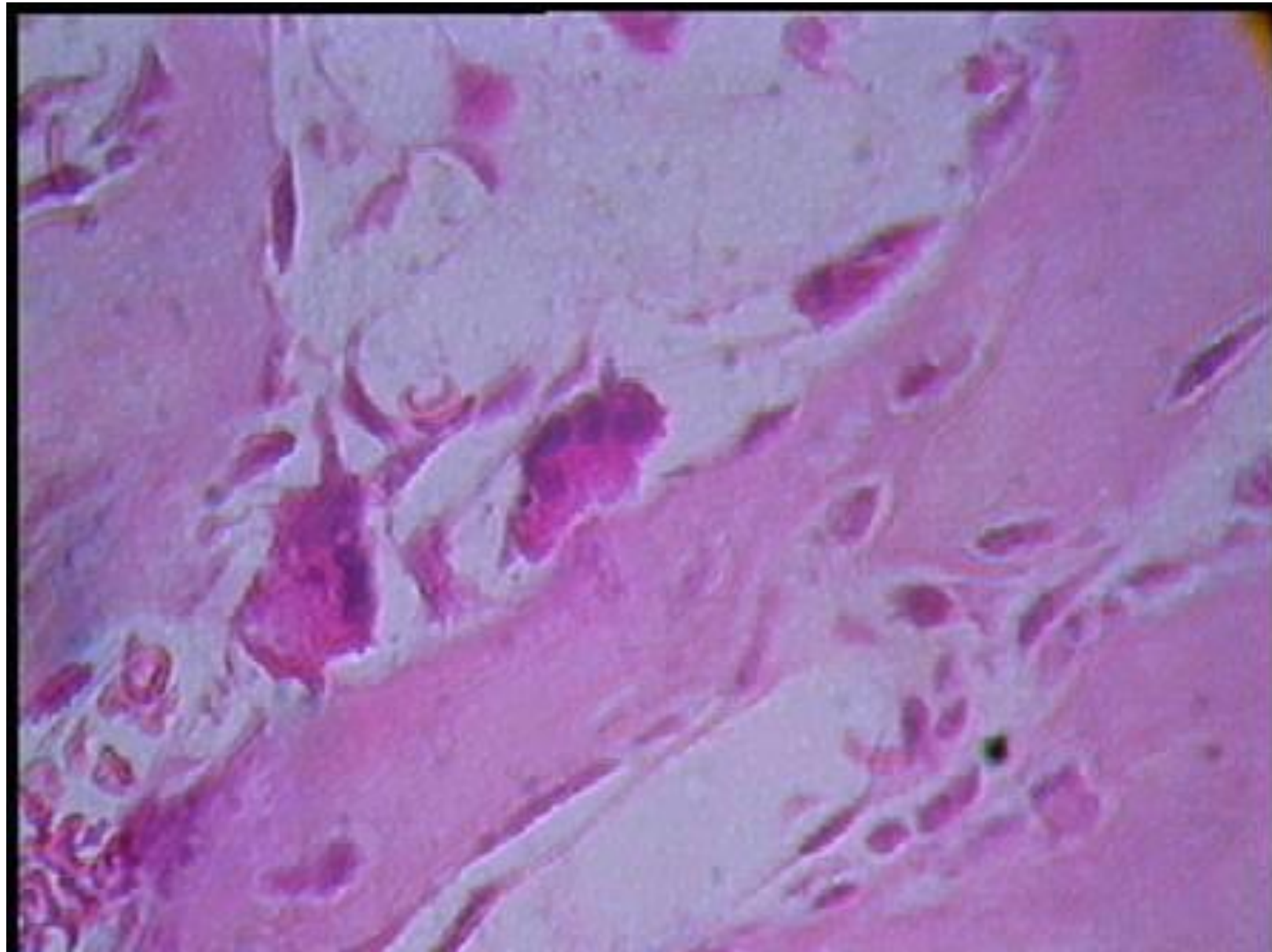


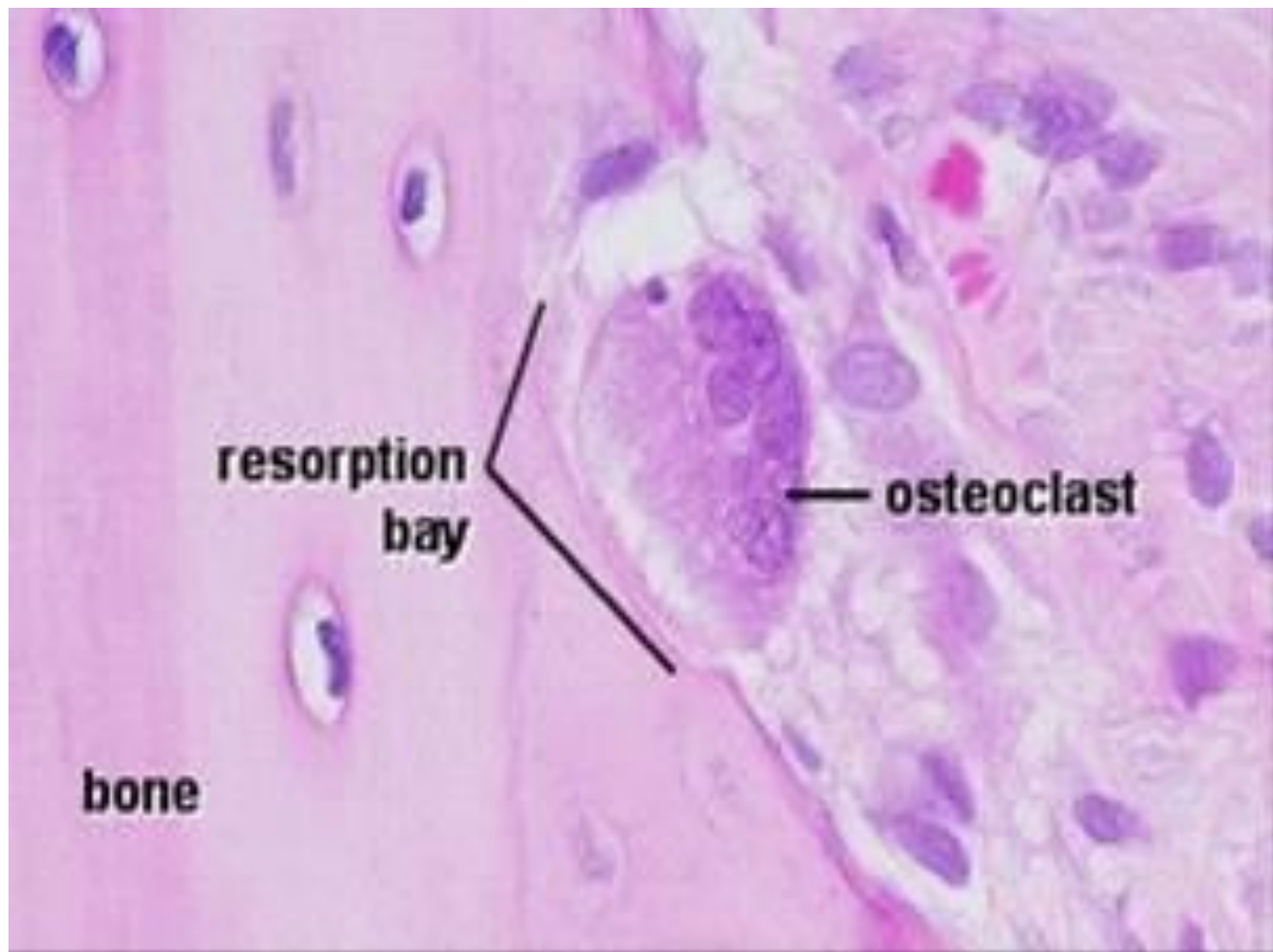
A light micrograph of a plant stem cross-section, stained with a pink dye. The image shows several vascular bundles arranged in a ring. Each bundle consists of xylem on the inner side and phloem on the outer side. A semi-transparent grey box is overlaid on the right side of the image, containing text.

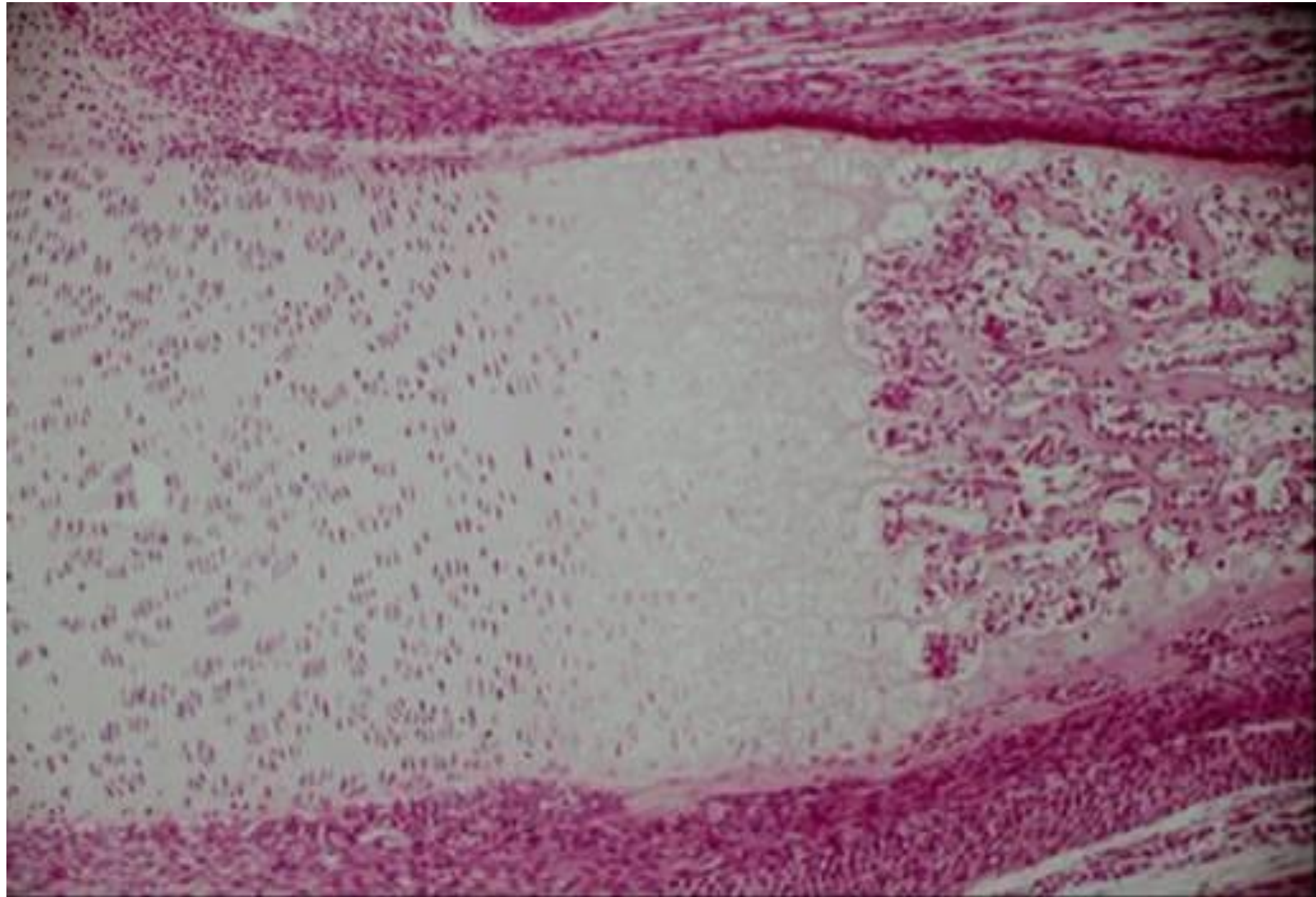
[gty.im/
128570402](https://www.gty.im/128570402)

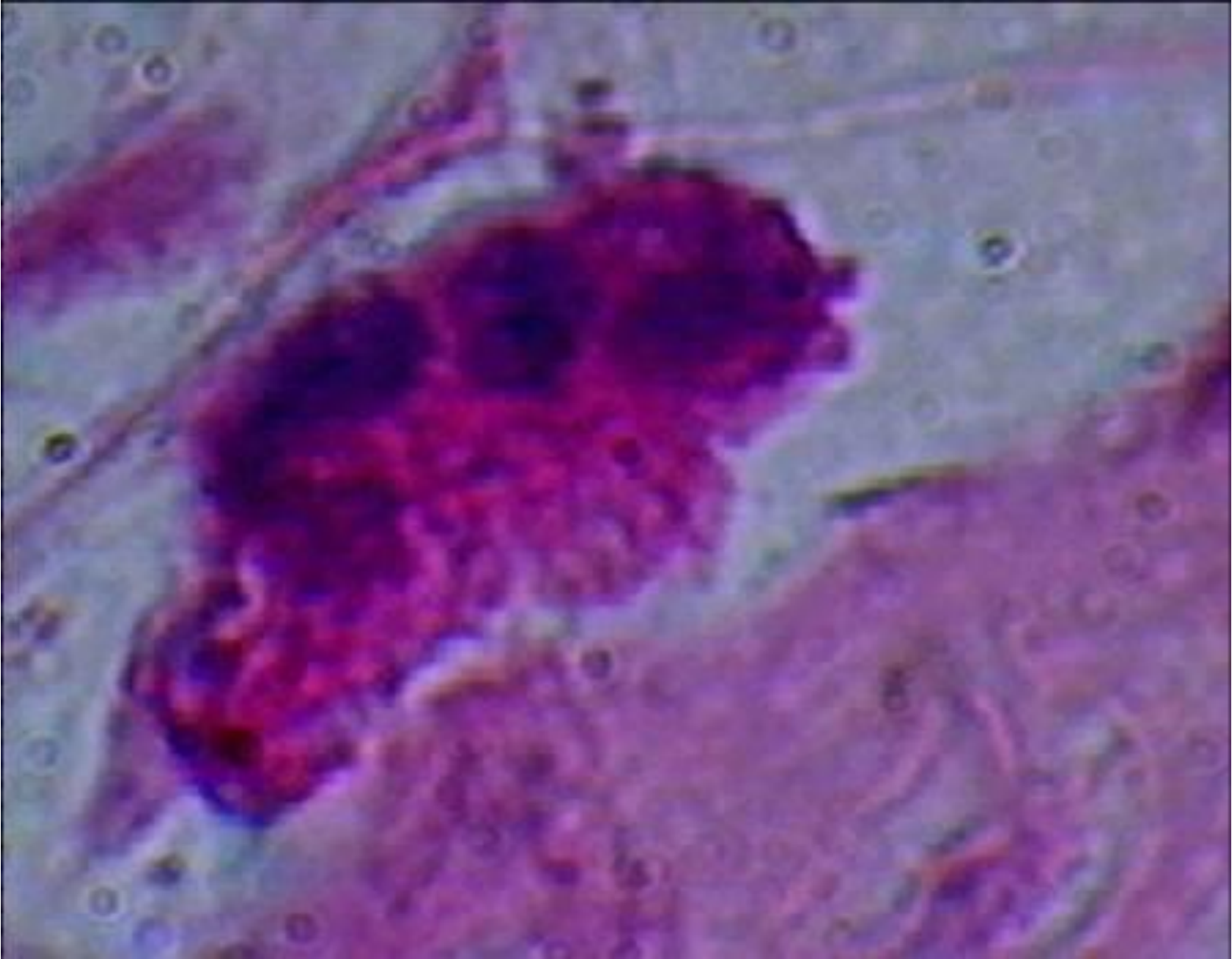
By
**BIOPHOTO
ASSOCIATES**

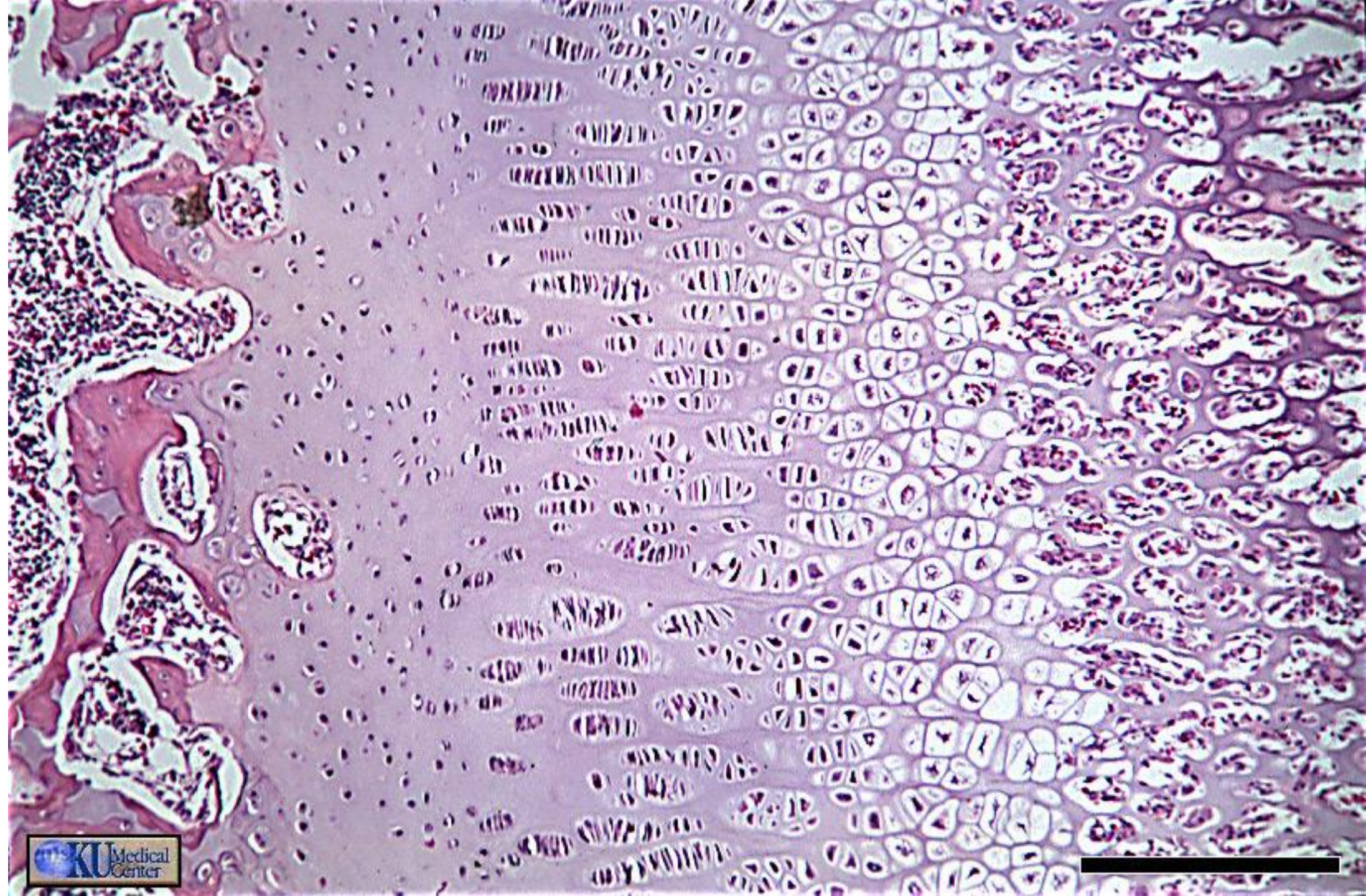


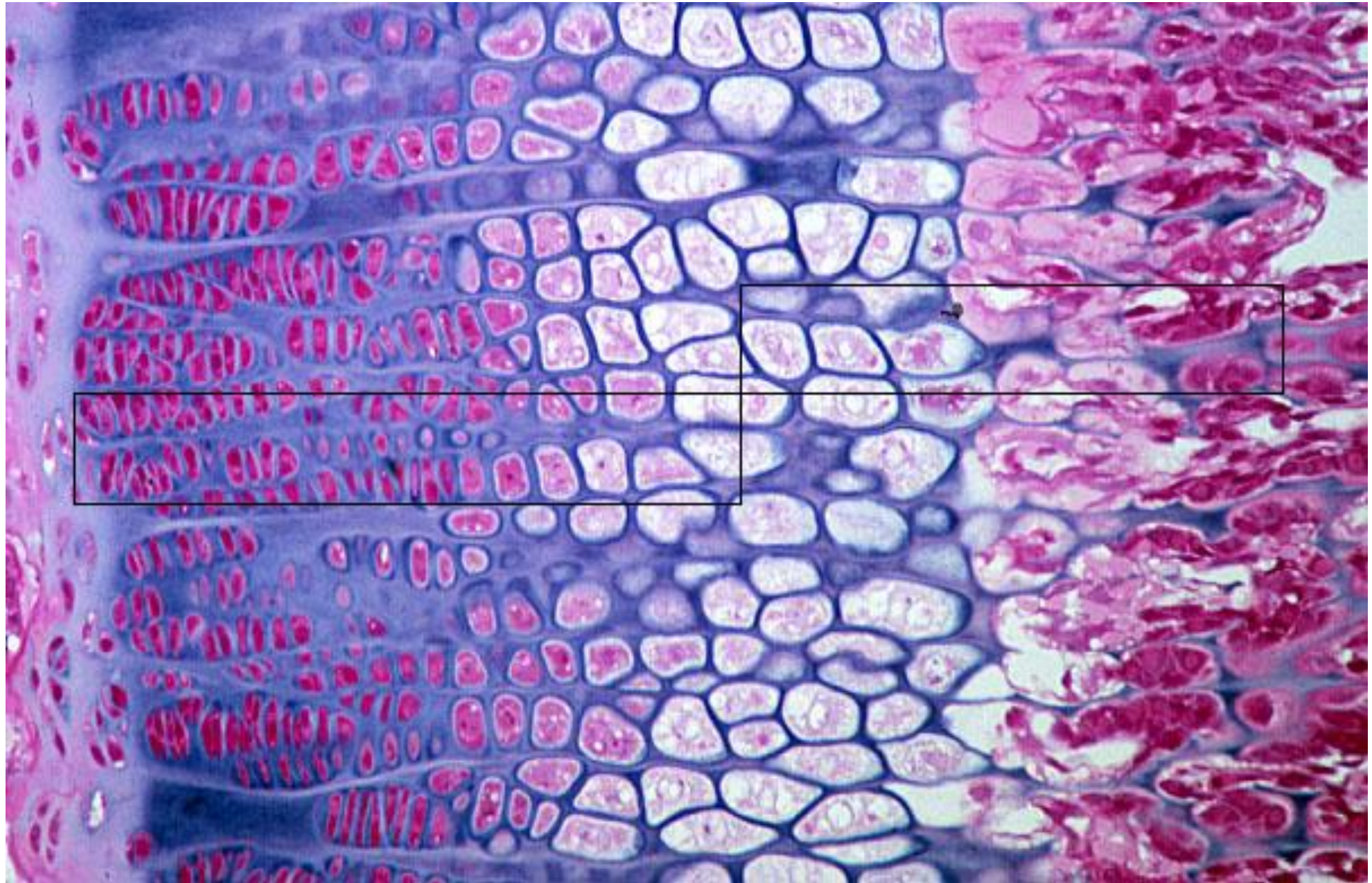












Lamellar bone of epiphysis

Resting cartilage

Zone of proliferating chondrocytes

Zone of chondrocyte hypertrophy

Zone of cell death

Zone of vascular invasion

Zone of mixed spicules

