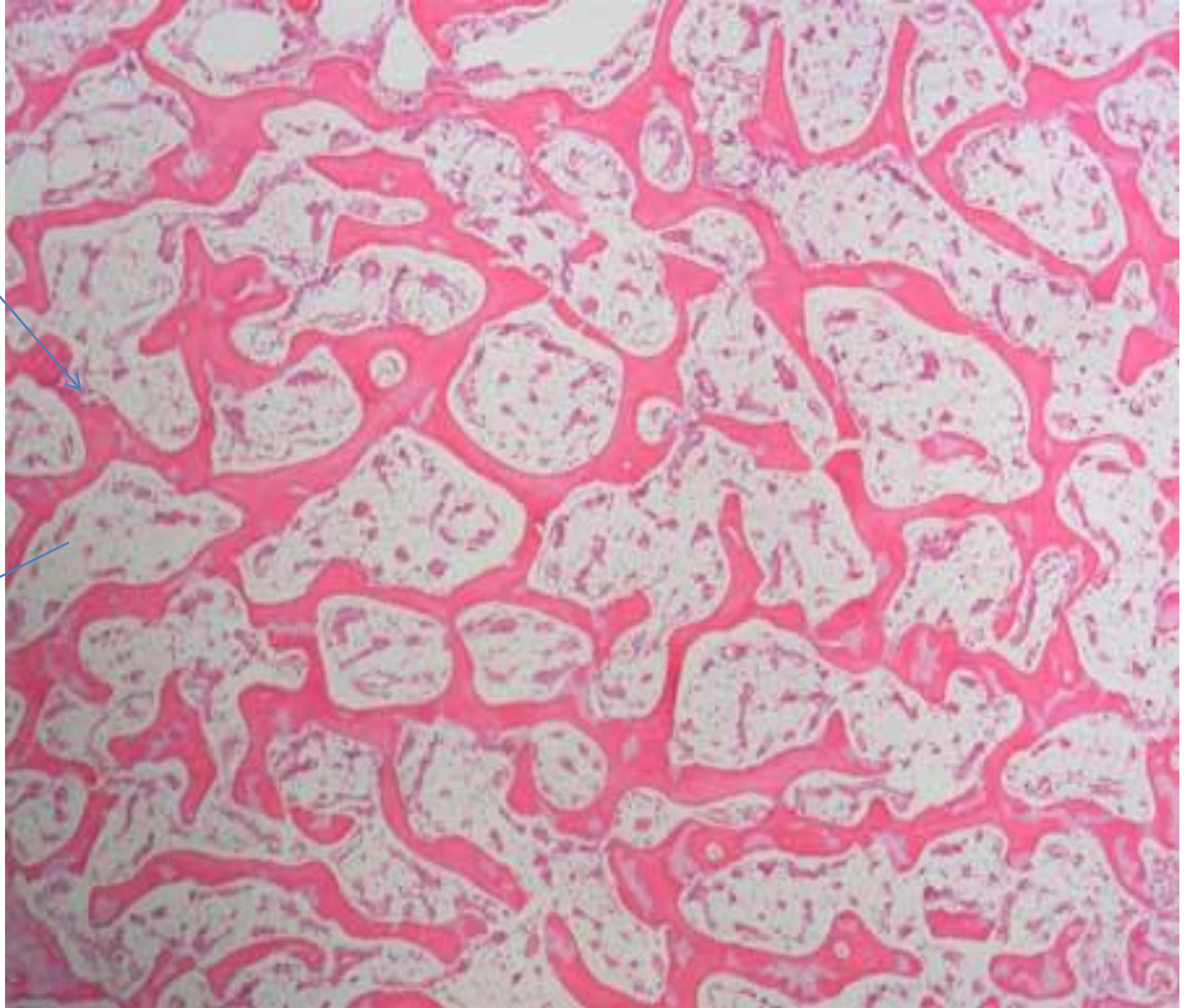
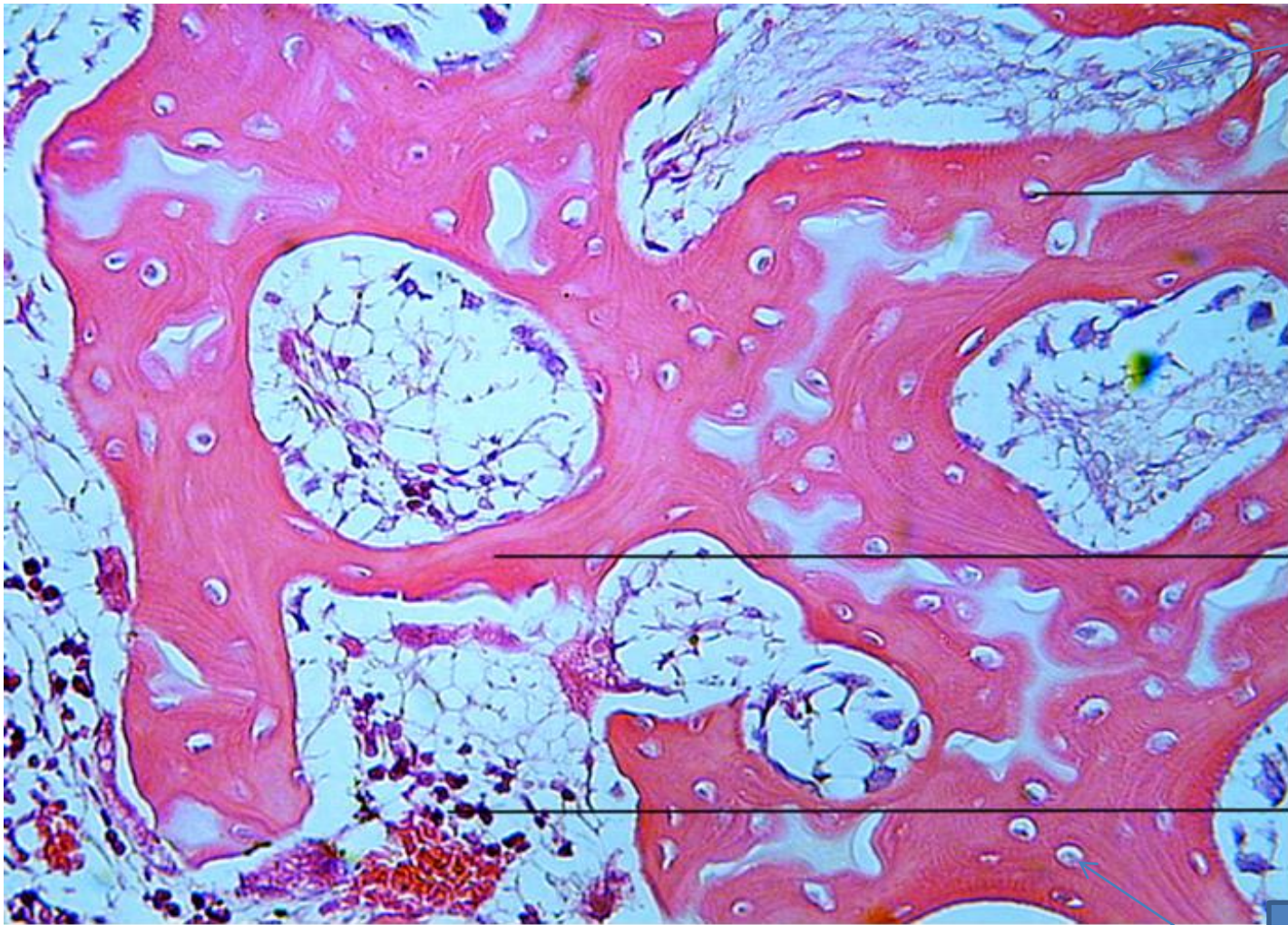


Bone
trabeculae

Bone marrow
(fat and blood
cell)



Spongy bone (cancellous bone)



Fat cell

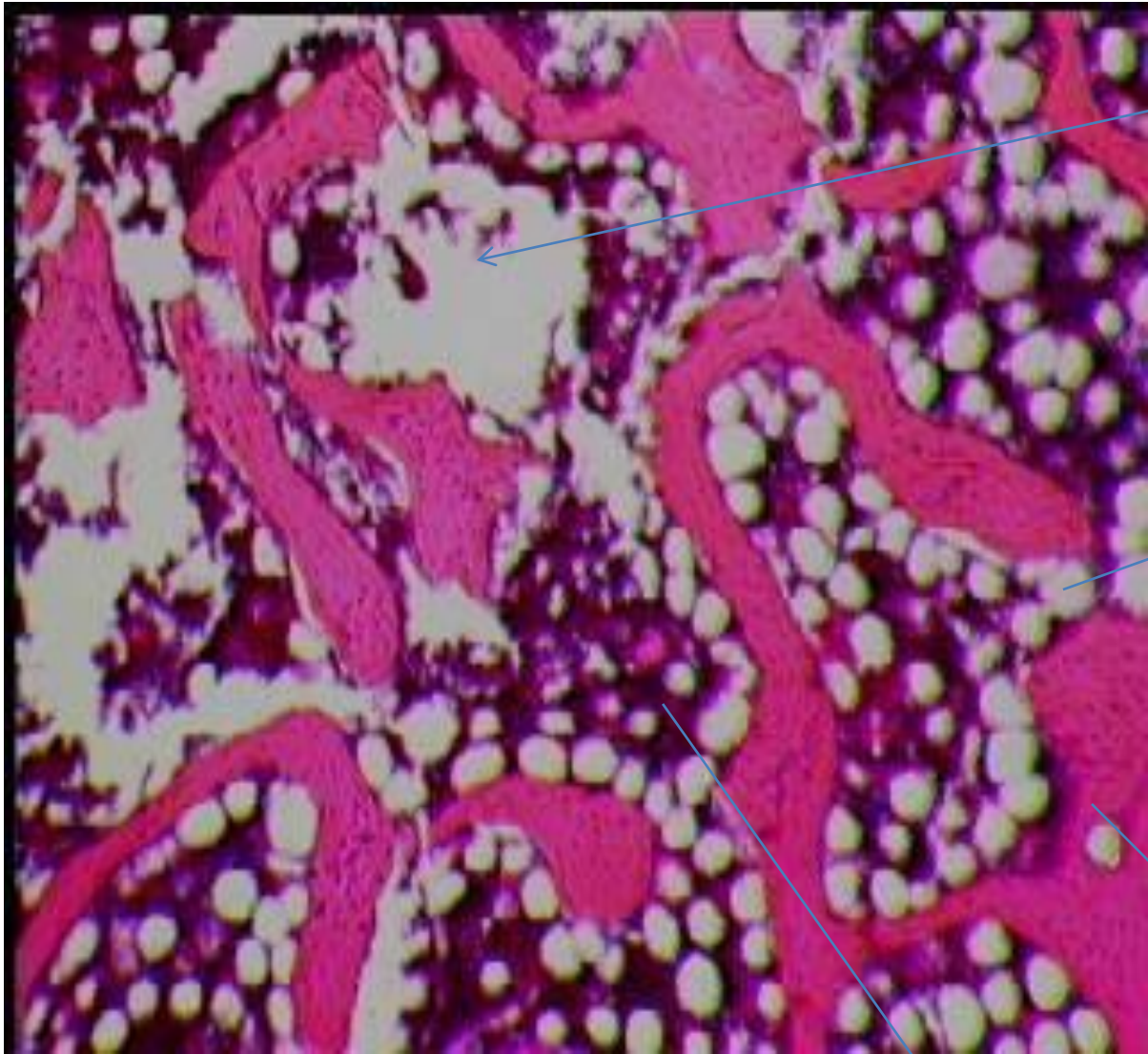
Osteocyte

Trabecula

Red bone Marrow

Blood cell

Cancellous (Spongy) Bone (400x)



Bone marrow

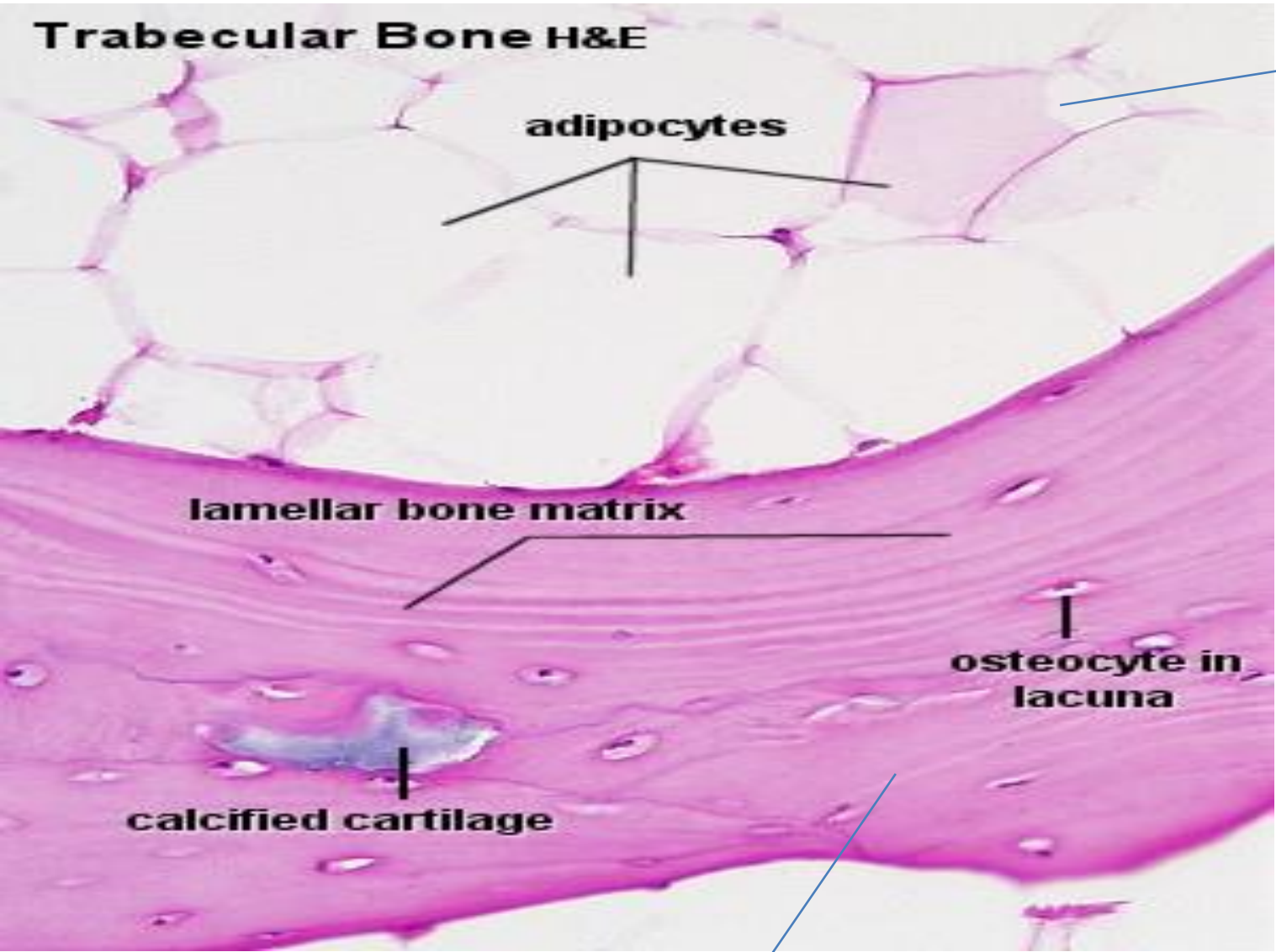
Fat cell

trabeculae

Cancellous bone

Blood cell

Trabecular Bone H&E



adipocytes

lamellar bone matrix

osteocyte in lacuna

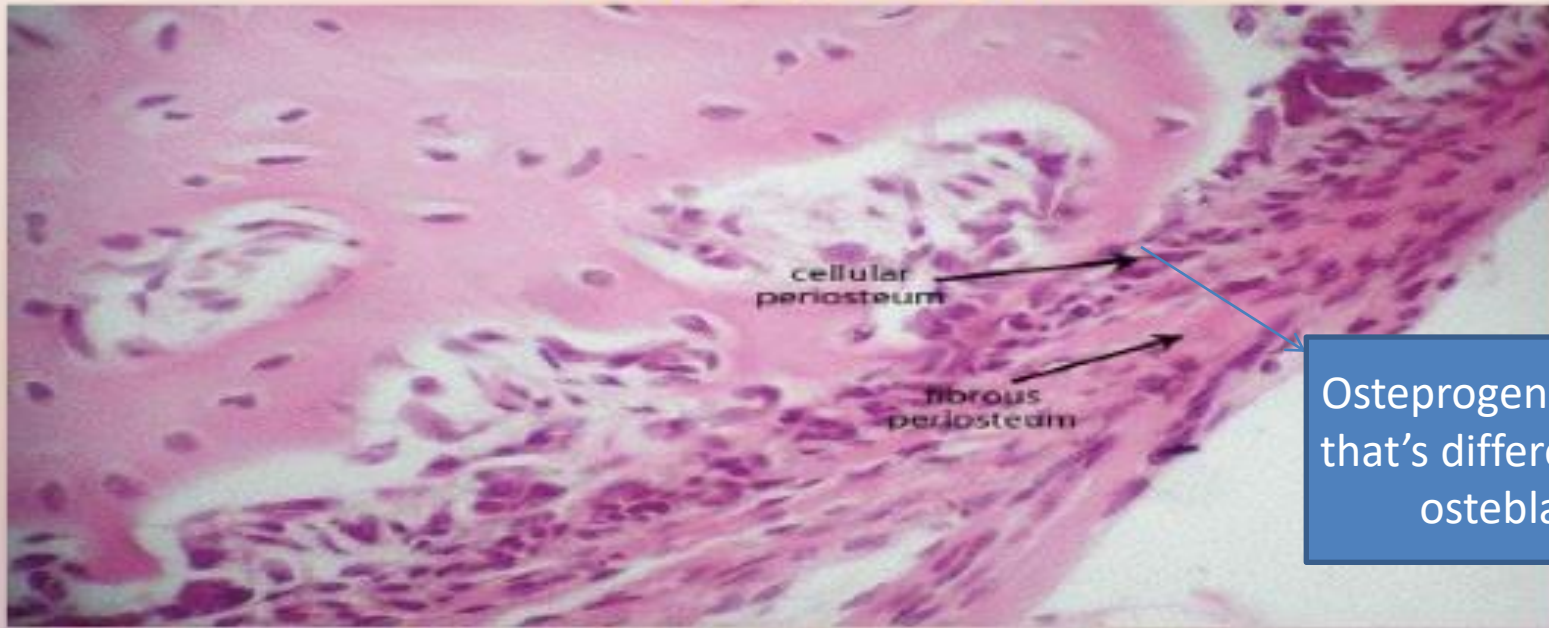
calcified cartilage

Yellow bone marrow that contain fat cell

Single trabeculae

Cover bone in
out side

PERIOSTEUM



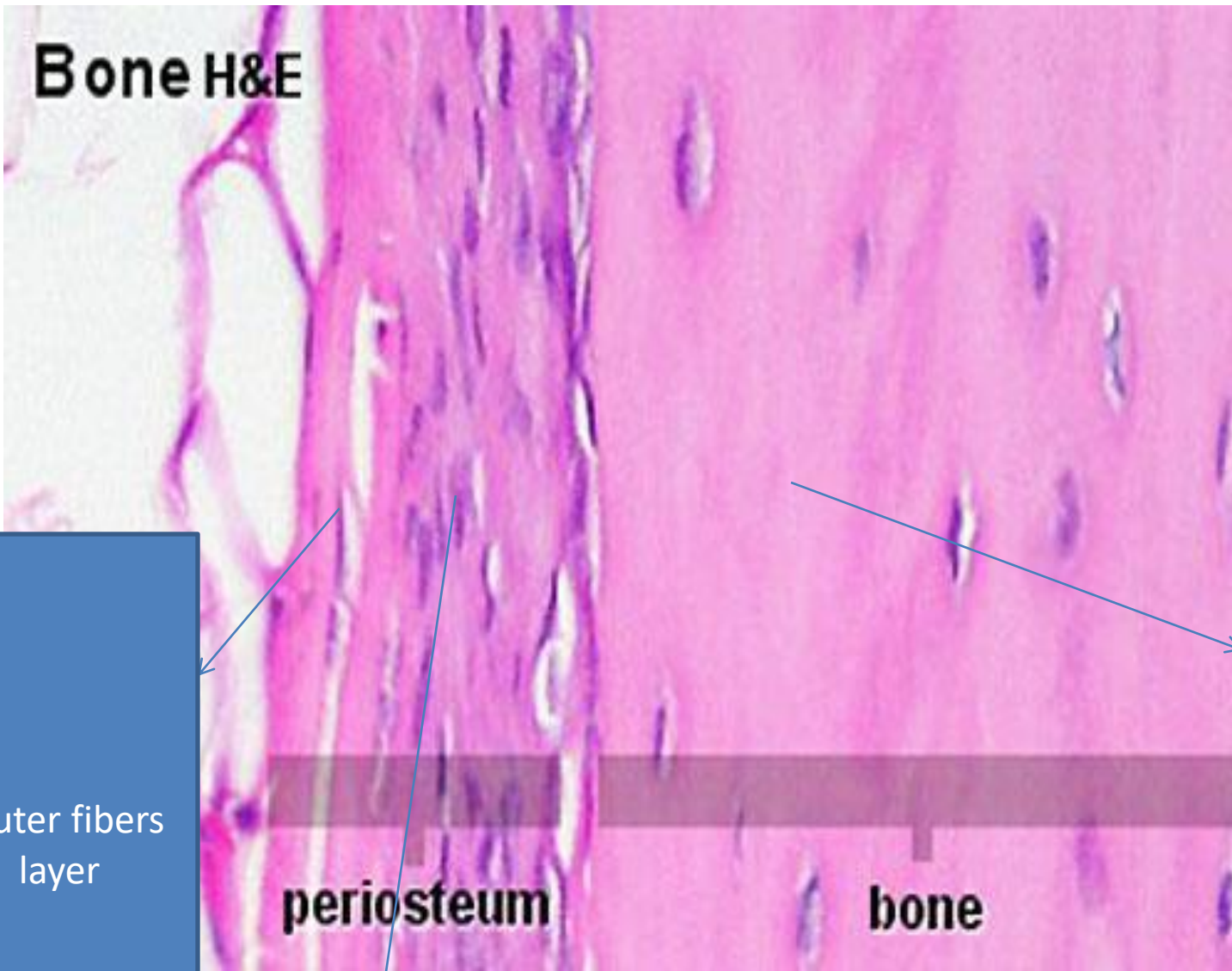
Osteoprogeneter cell
that's differential to
osteblast

MEMBRANE COVERING OUTER SURFACE OF BONE

LAYERS: 1. FIBROUS LAYER
2. CAMBIUM LAYER

Inner cellular

Bone H&E



Outer fibers layer

periosteum

bone

Endosteum

Inner cellular layer

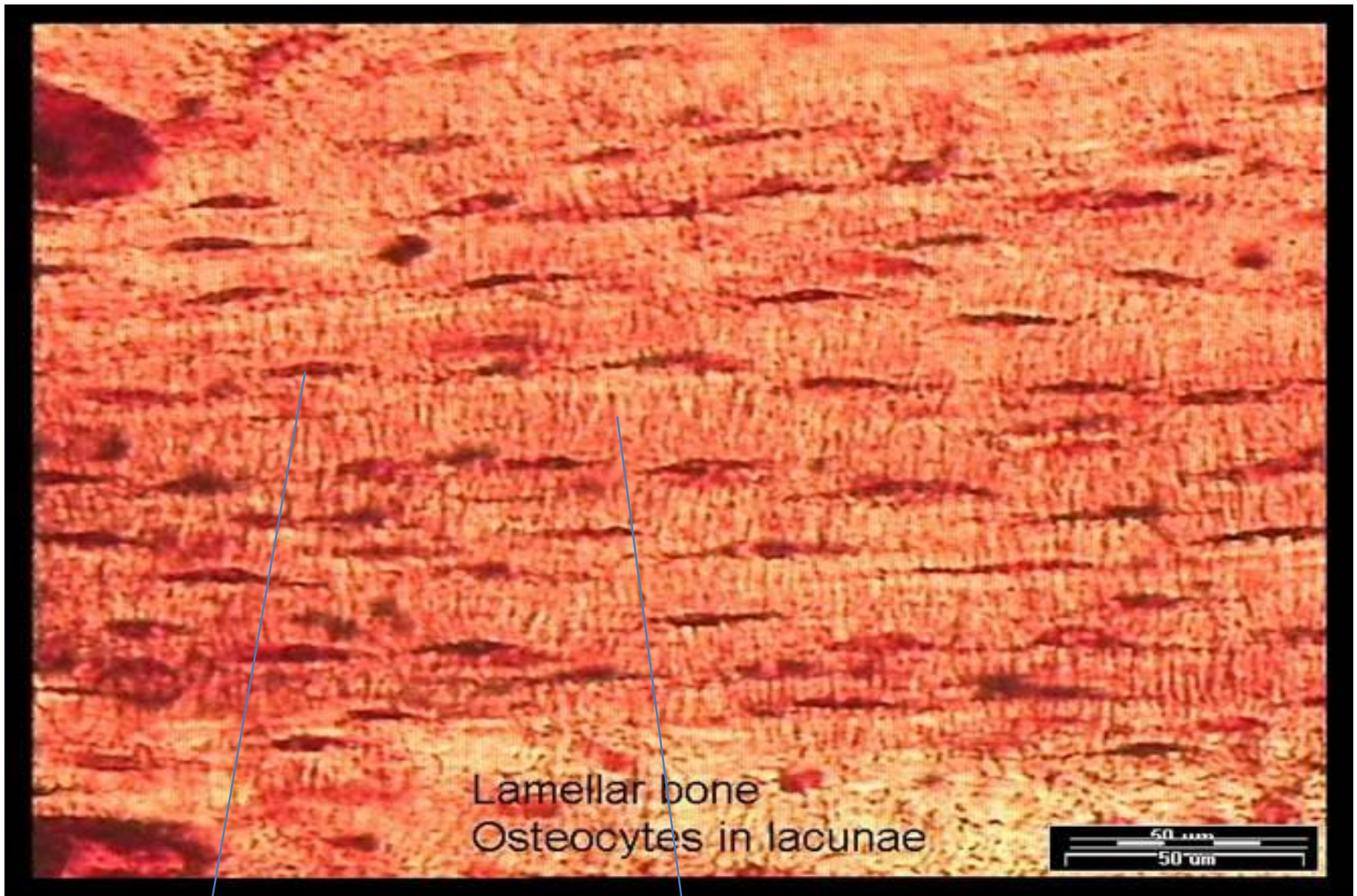


osteocyte

osteocyte

Lamellar at high magnification

مقطع كله
Lacuna for
osteocyte

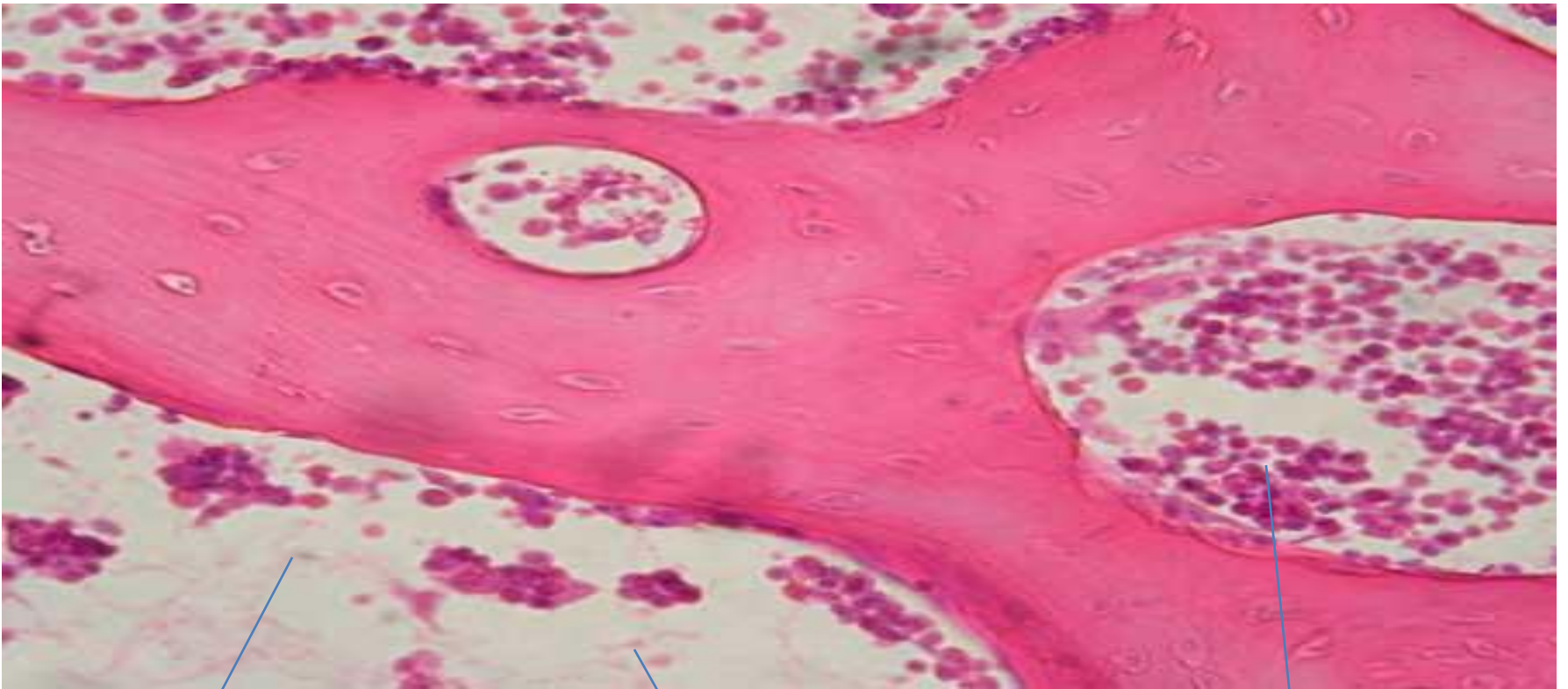


Lamellar bone
Osteocytes in lacunae



Osteocyte

Lamellar like layer in
bone

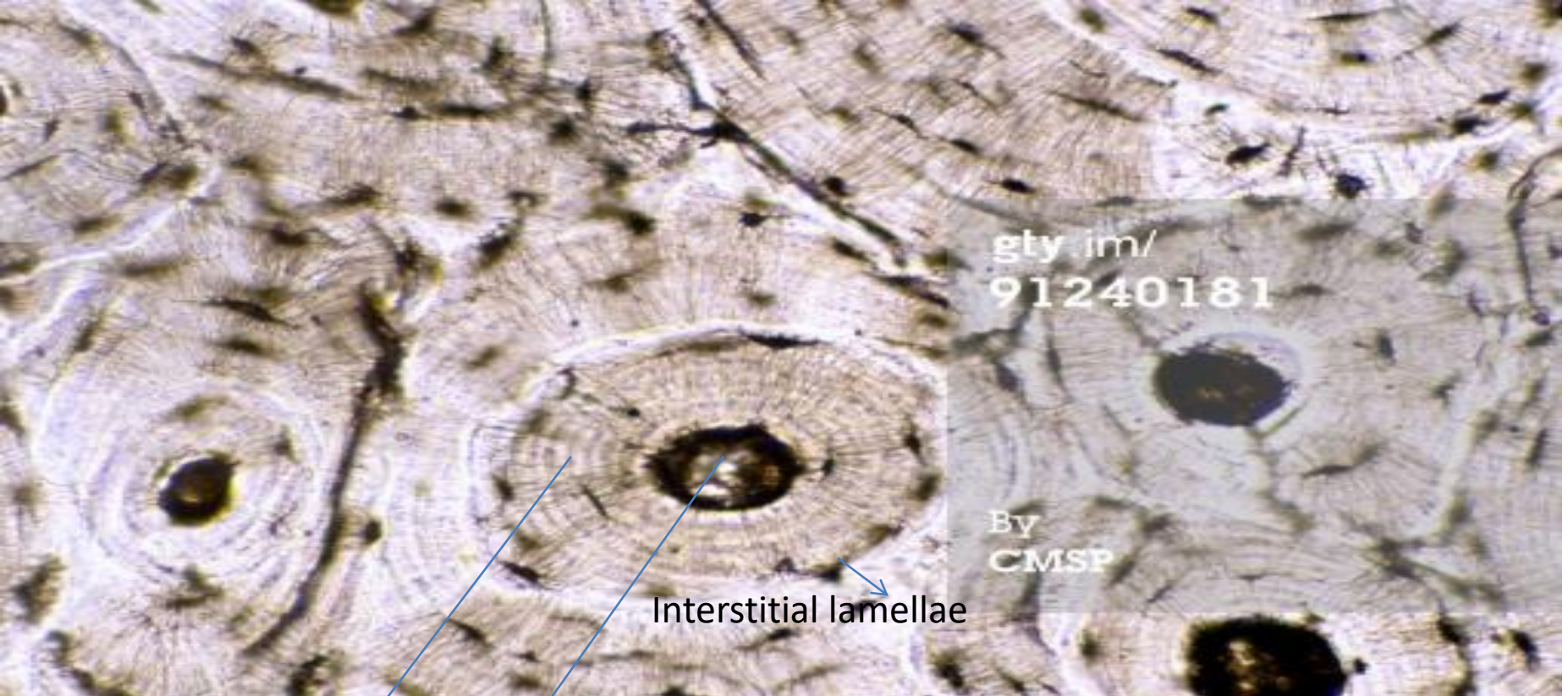


Bone marrow

Spongy bone (cancellous bone)

Fat cell

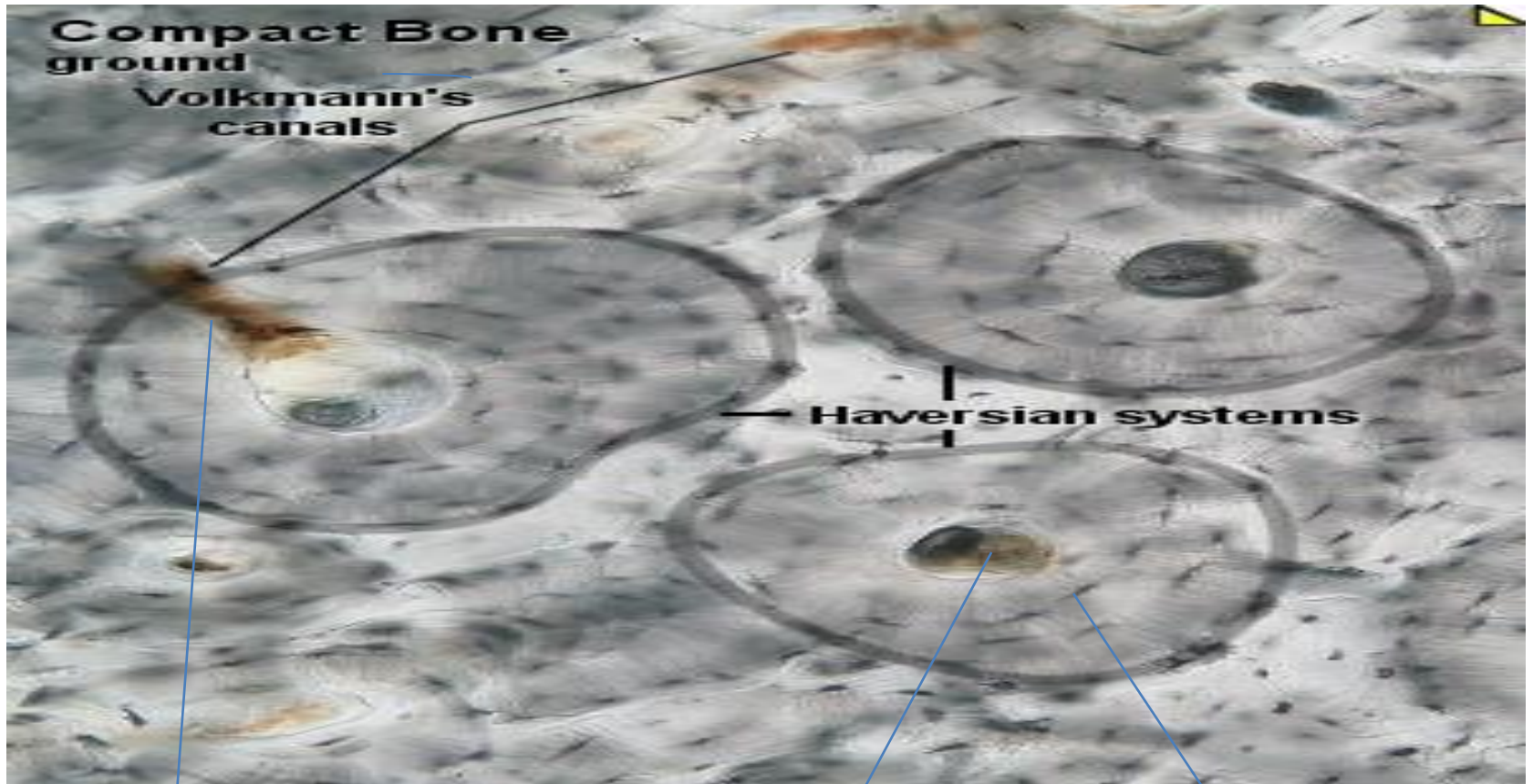
Blood cell



Osteon

Haversian canals

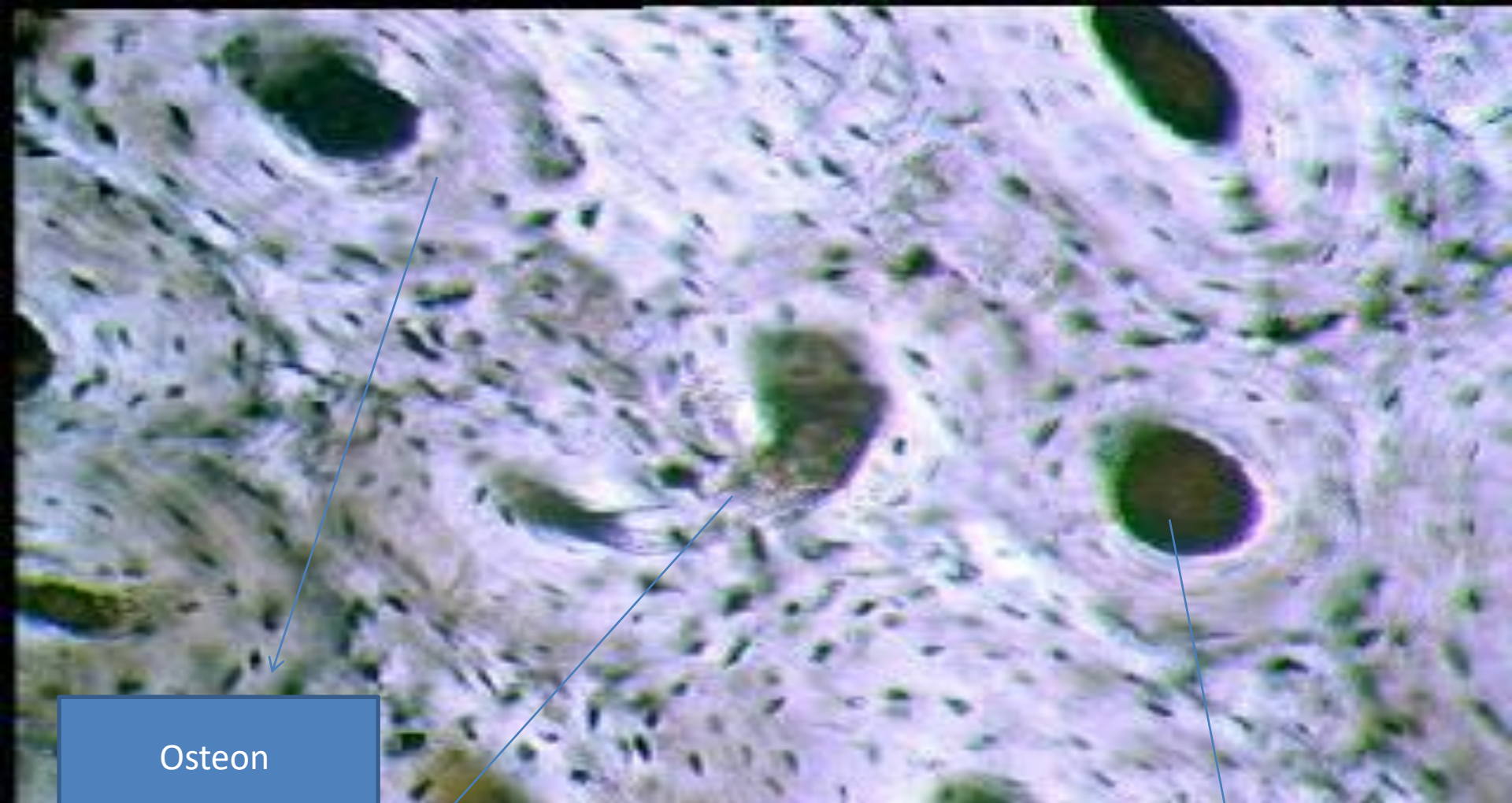
Dense bone (compact bone)
Ground section in compact bone



Volkman's canal

haversian canals

Ostocyte

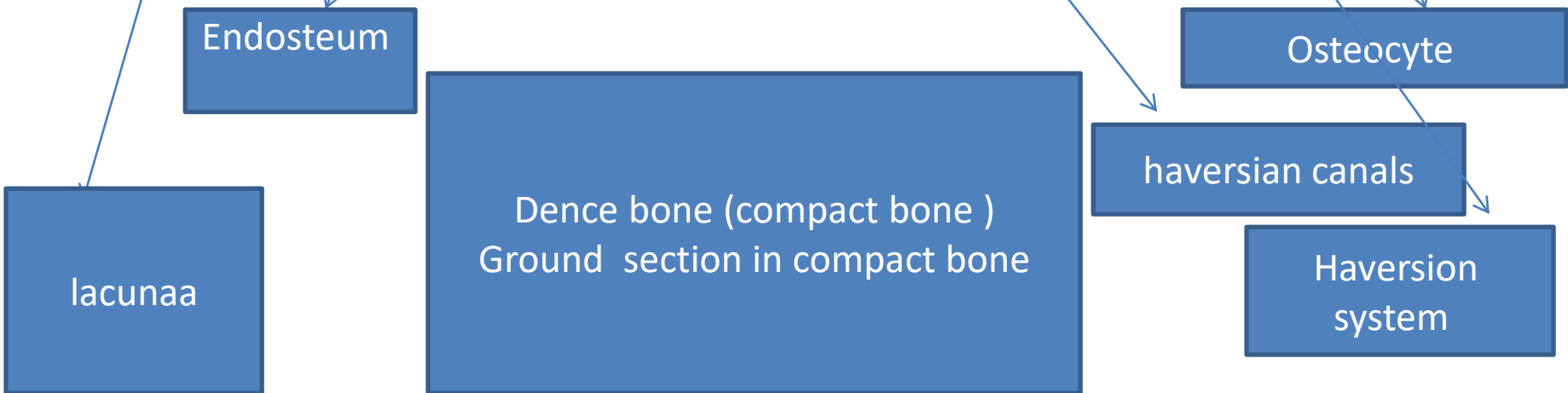
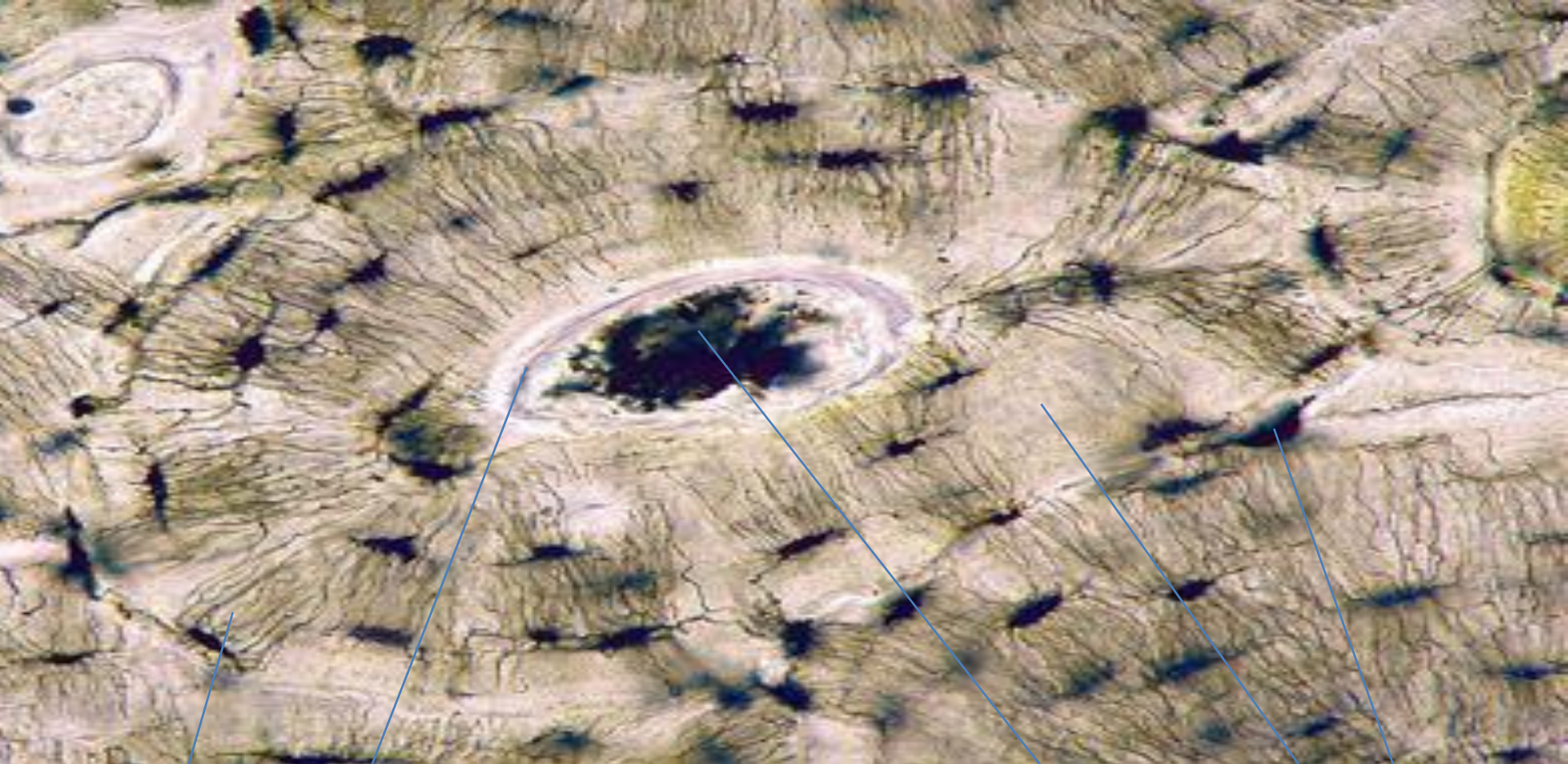


Osteon

Haversian canals

Volkman's canal

Dense bone (compact bone)
Ground section in compact bone





gty.im/
156850339

By
Visuals Unlimited,
Inc./Scientifica

Around
hevarisian
system

Dence bone (compact bone)
Ground section in compact bone
That's not contain chemical and
stain

haversian canals

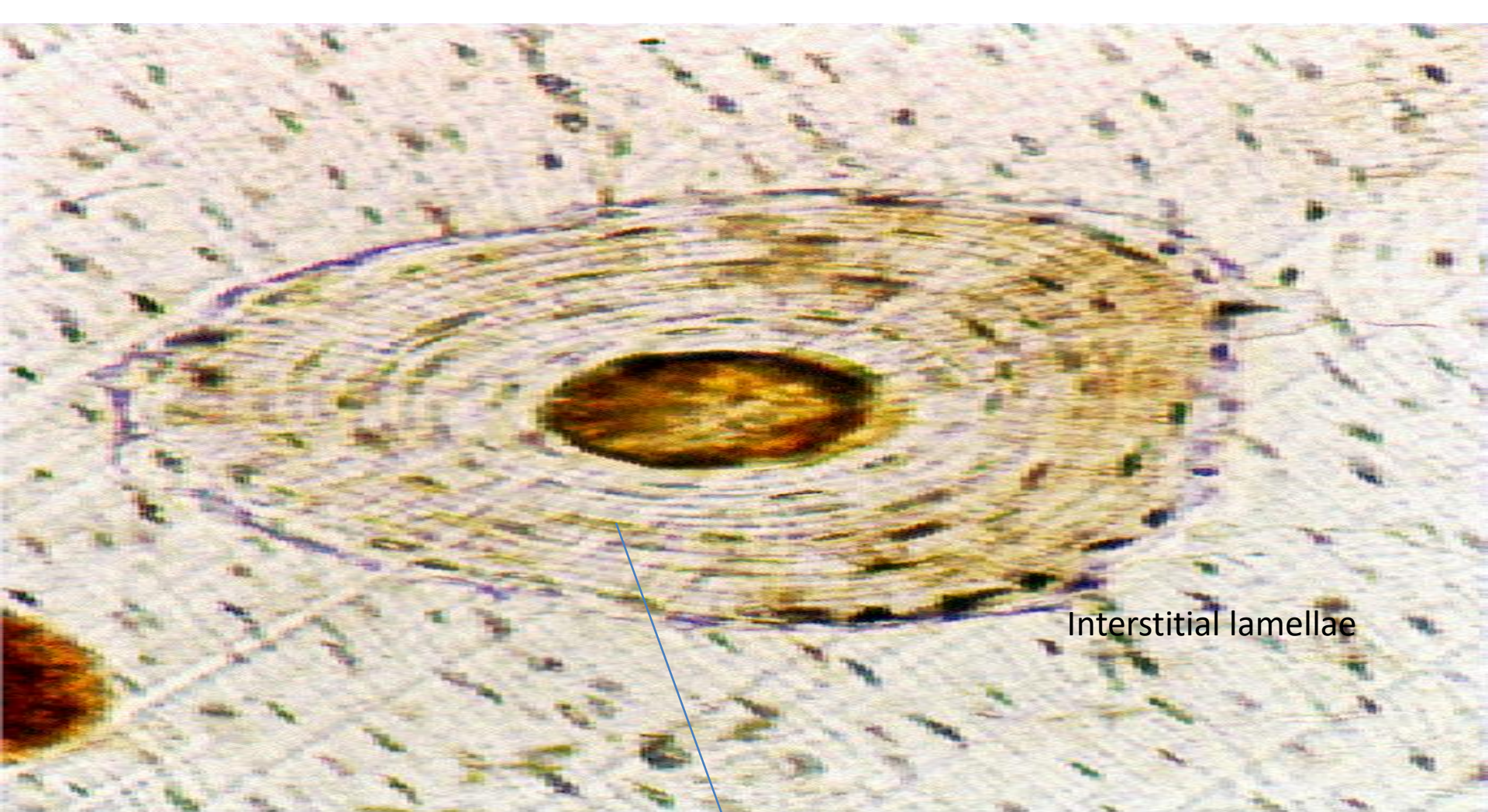
Small space between
lucunaa called
callacula



gty.im/
145094197

By
Visuals Unlimited,
Inc./Dr. Fred Hossler

Dence bone (compact bone)
Ground section in compact bone
That's not contain chemical and
stain



Interstitial lamellae

single Osteon

**Compact Bone ground
iris diaphragm open**

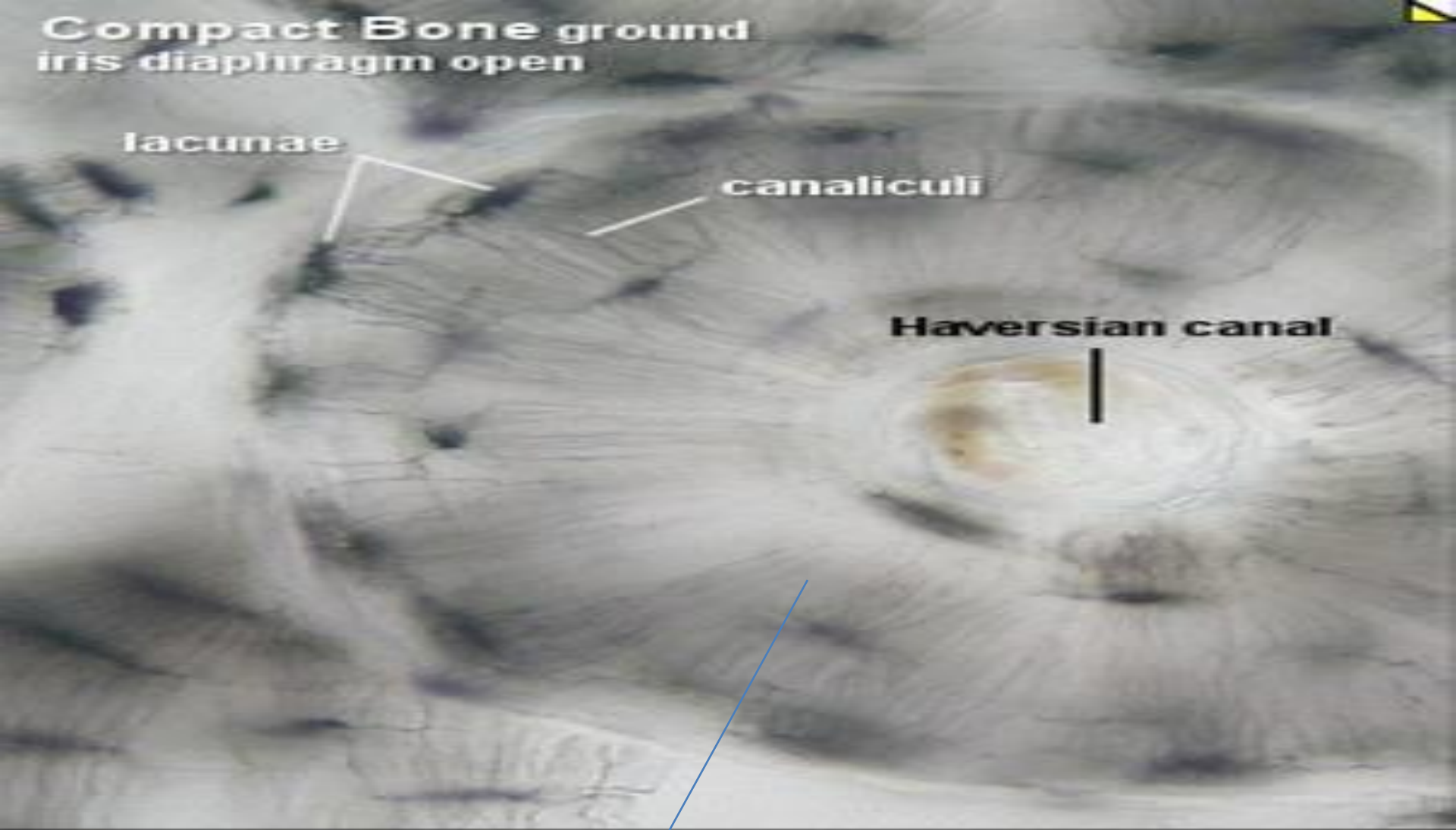
lacunae

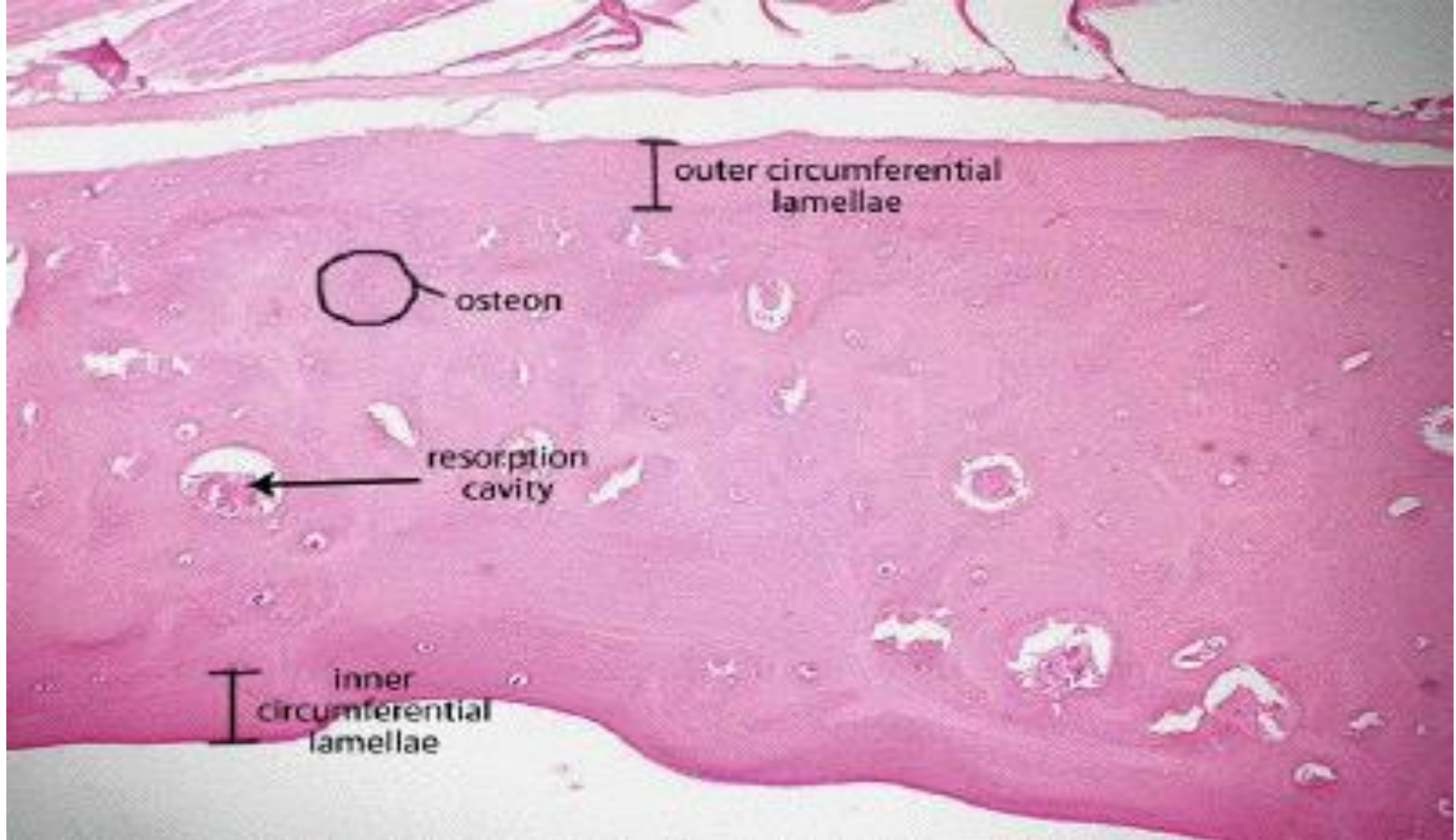
canaliculi

Haversian canal

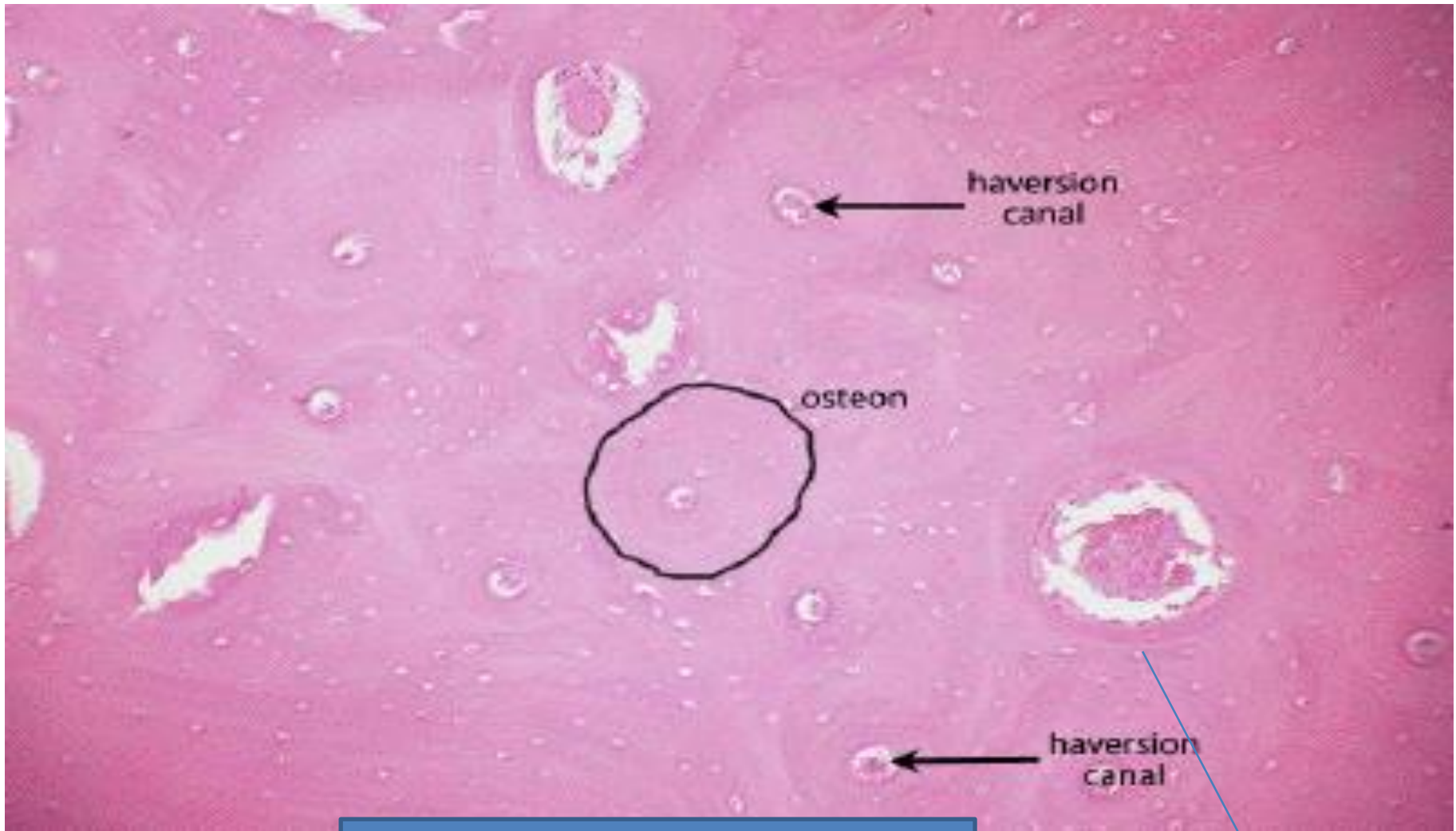
Dence bone (compact bone)
Ground section in compact bone
That's not contain chemical and
stain

single Osteon





Decalcified section in compact bone at low magnification that contain chemicals material to removal mineral to convert bone to soft and stain to pink



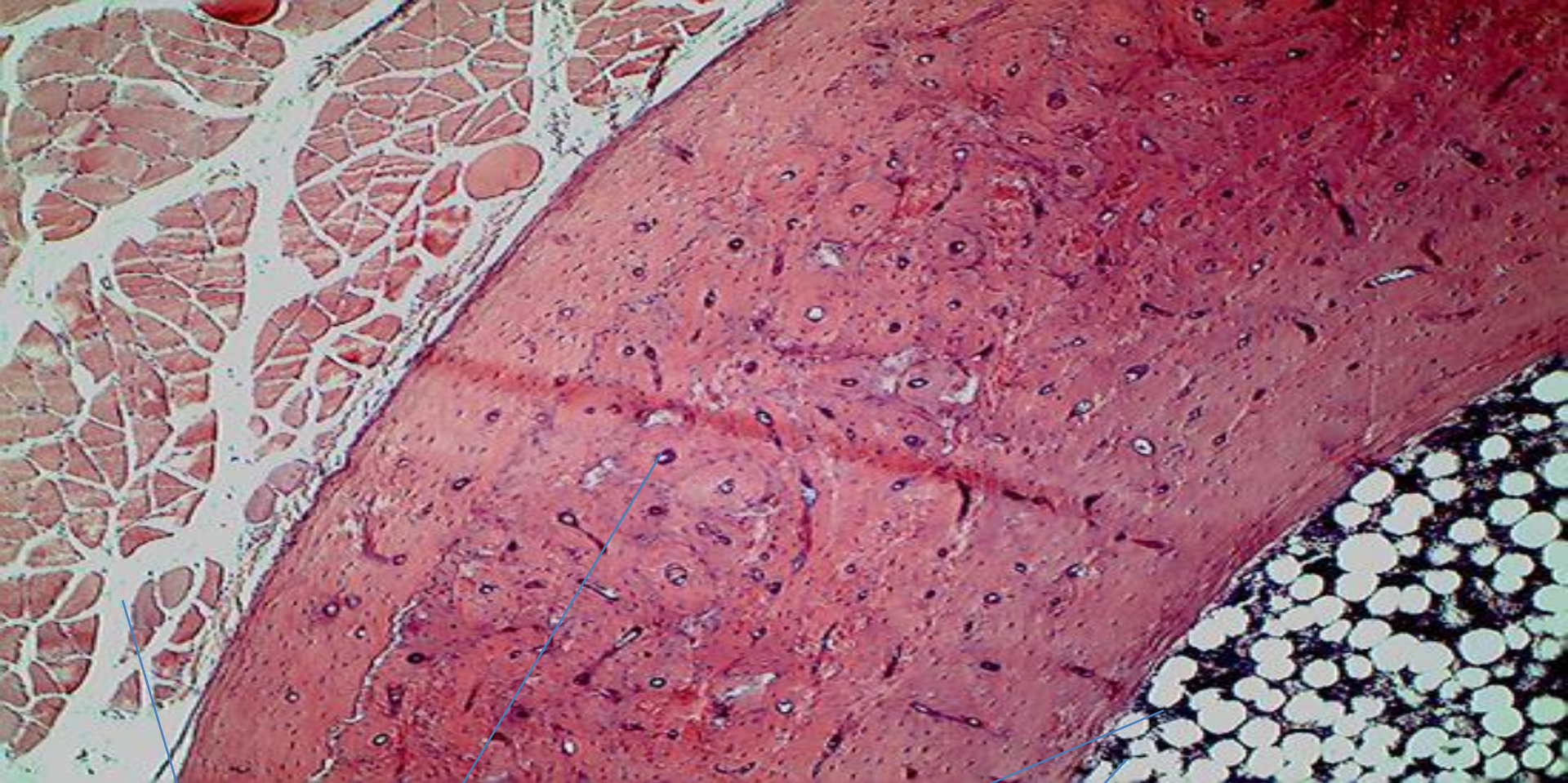
Haversian canal

osteon

Haversian canal

Decalcified section in compact bone at higher magnification that contain chemicals material to removal mineral to convert bone to soft and stain to pink

Osteocyte



Cantrell cannal

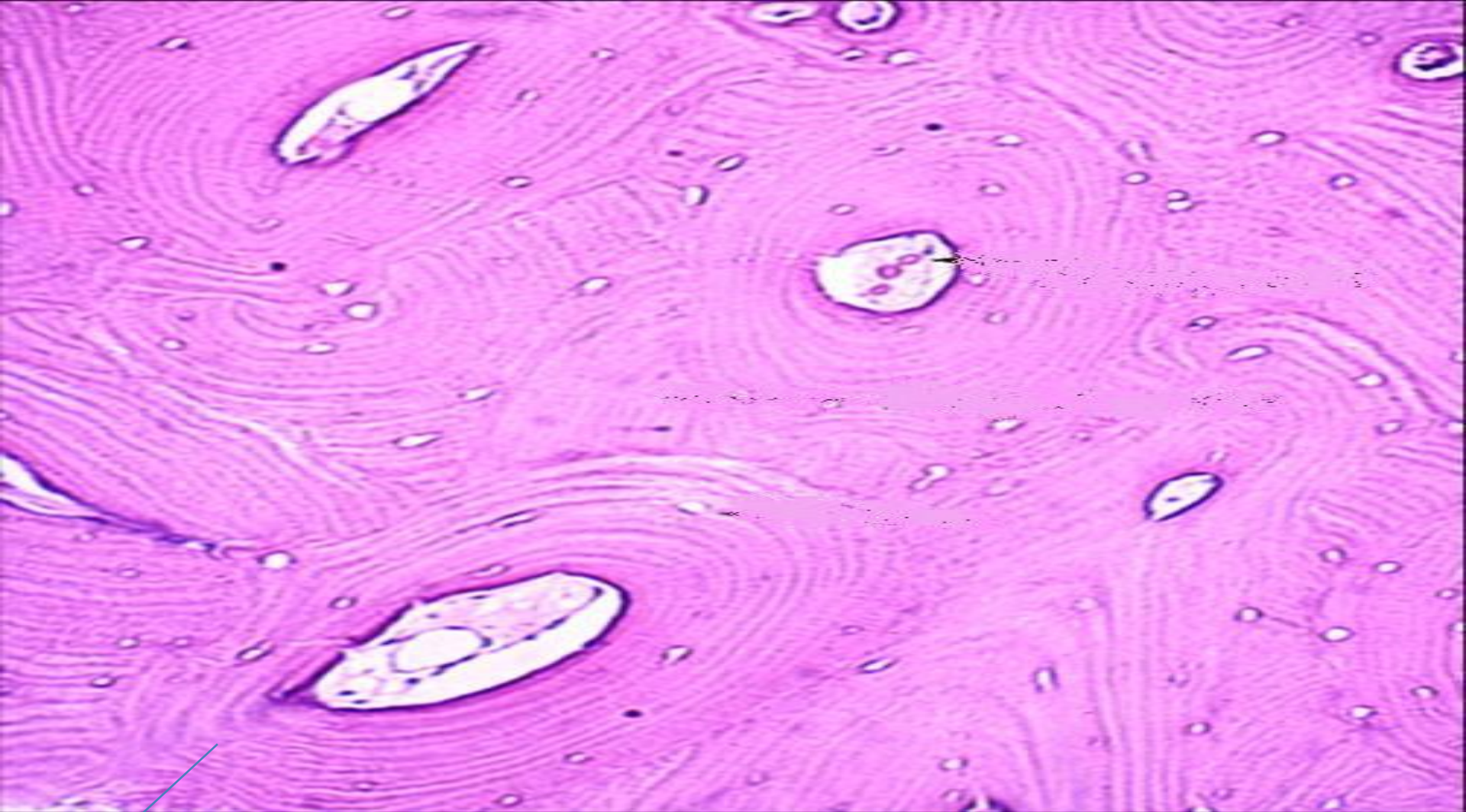
Blood cell

Muscle fibres

Fat cell

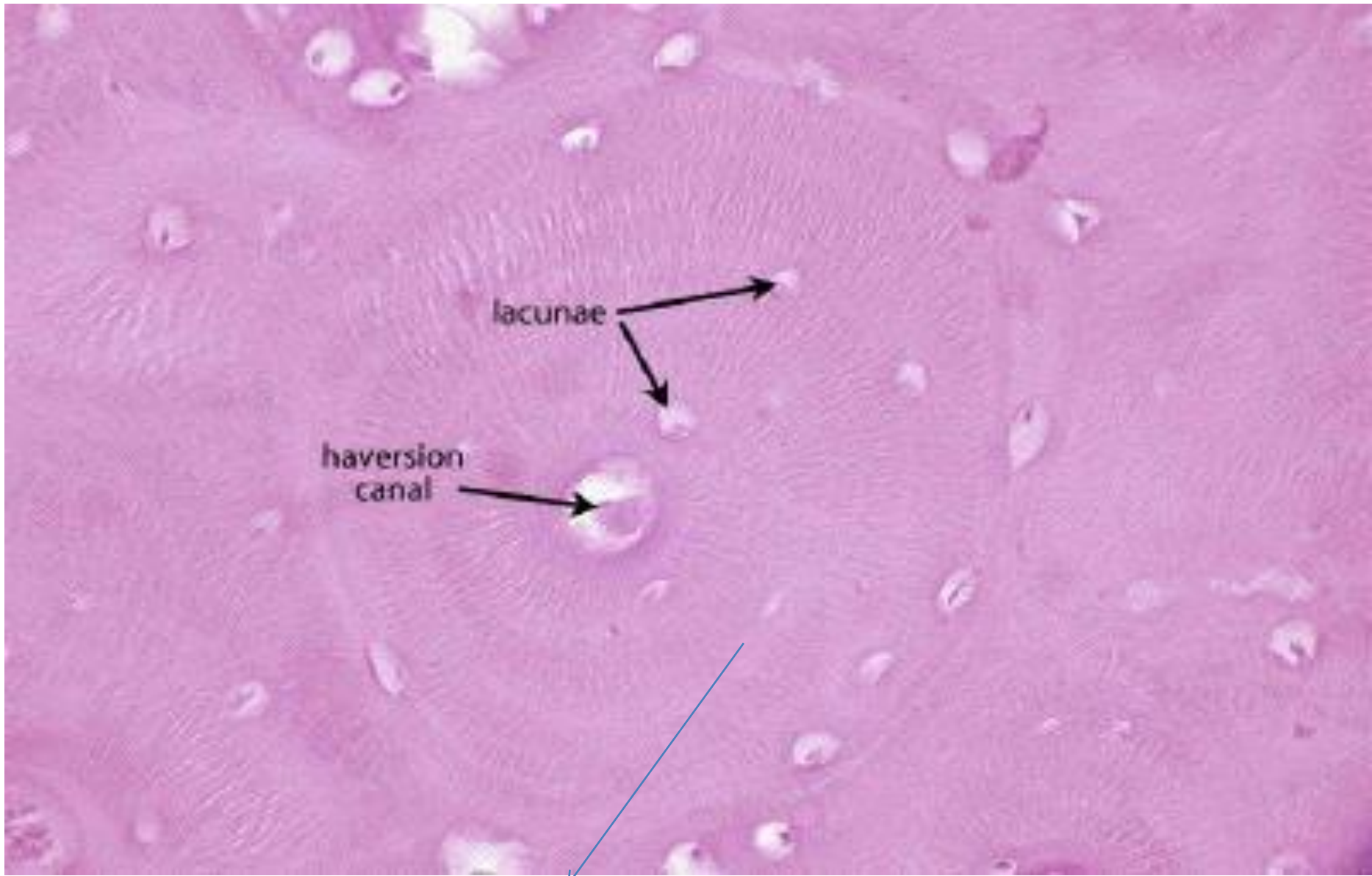
Bone marrow

Decalcified section in compact bone



circumferential
lamellae

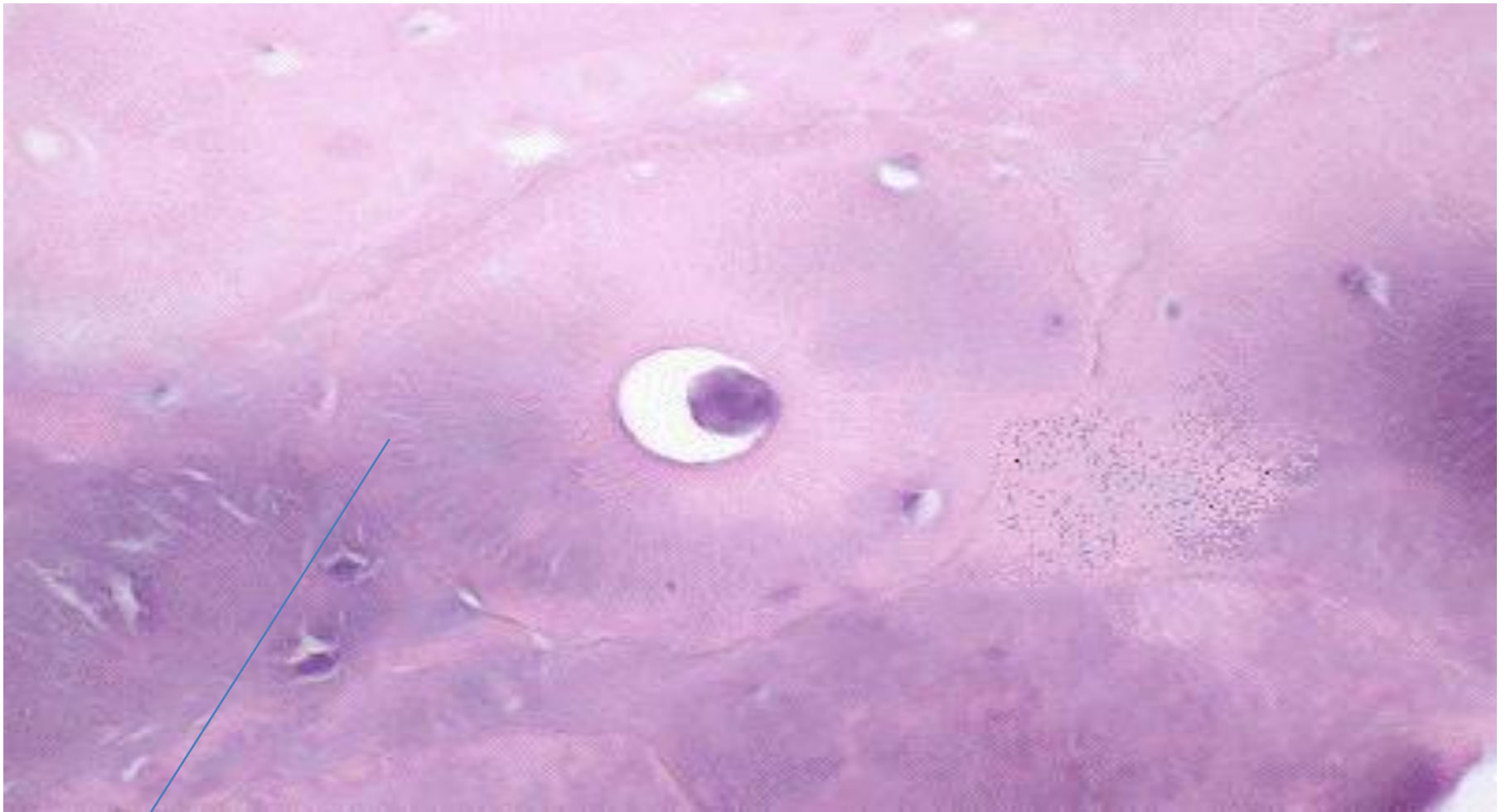
Decalcified section in compact bone at
higher magnification that contain
chemicals material to removal mineral
to convert bone to soft and stain to
pink



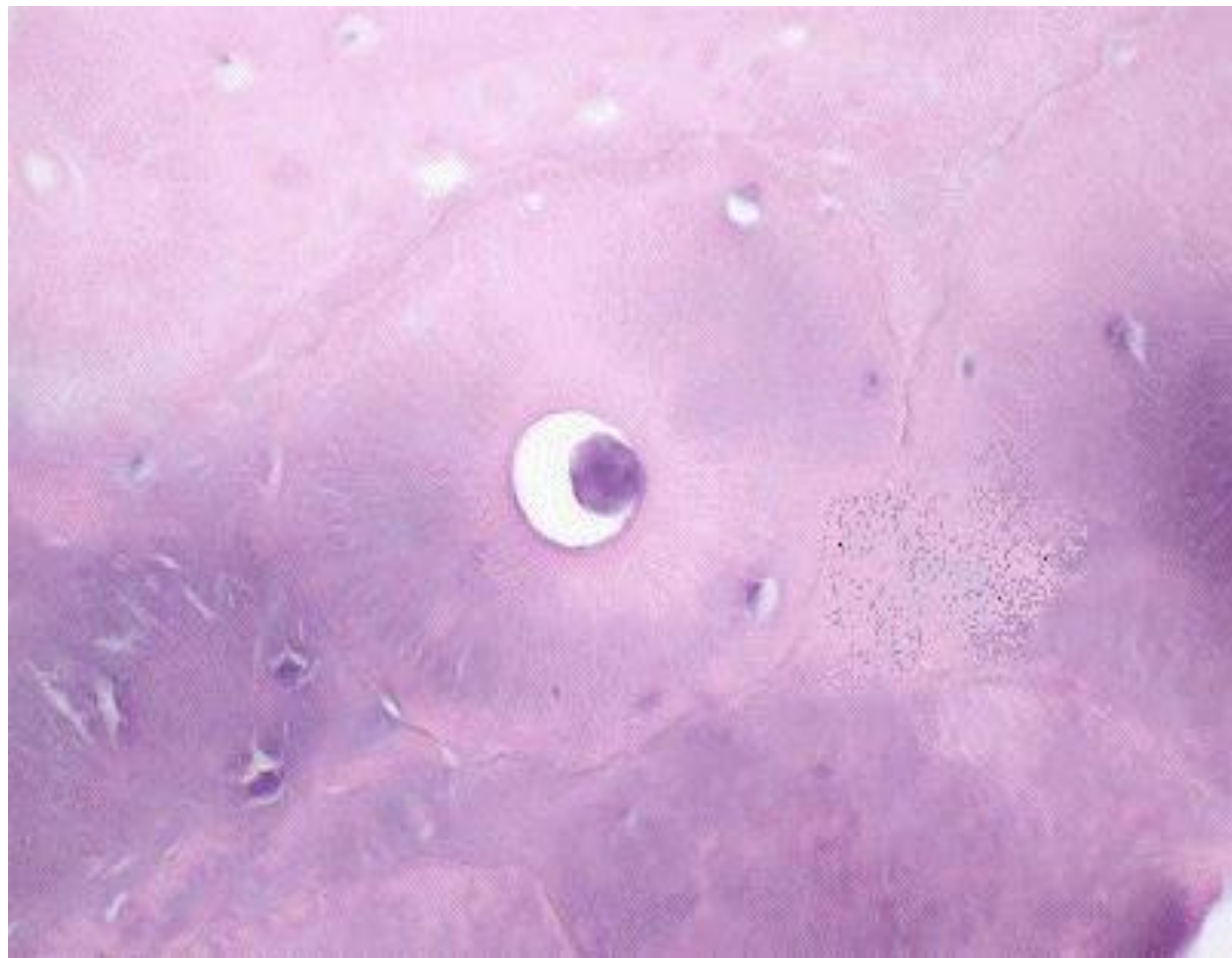
lacunae

haversian canal

single Osteon



circumferential
lamellae

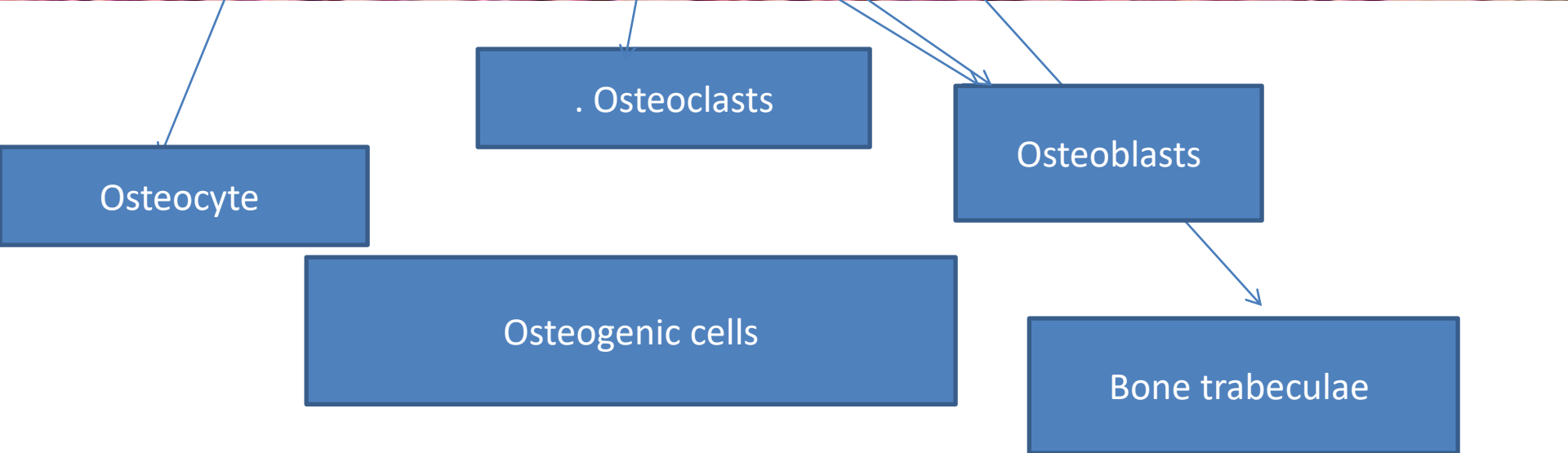
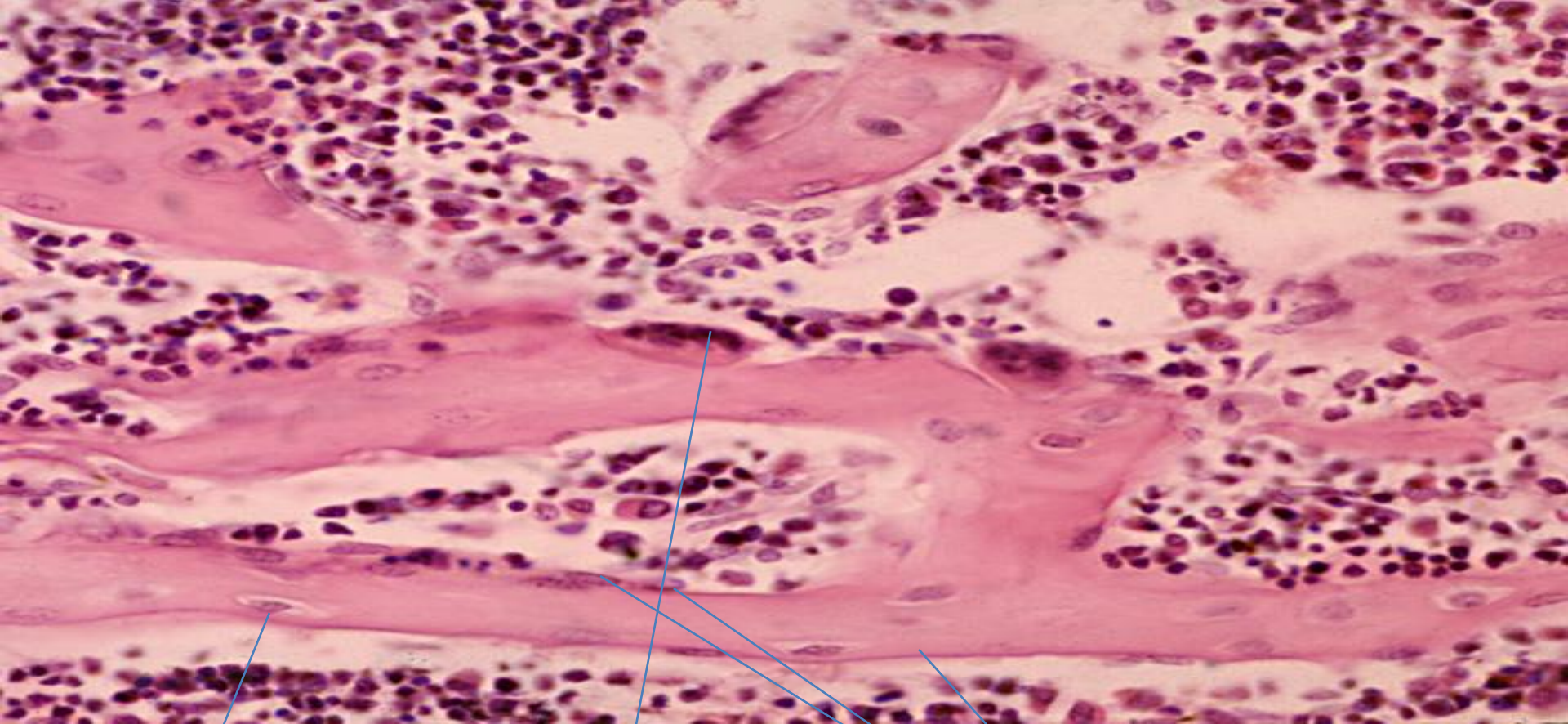


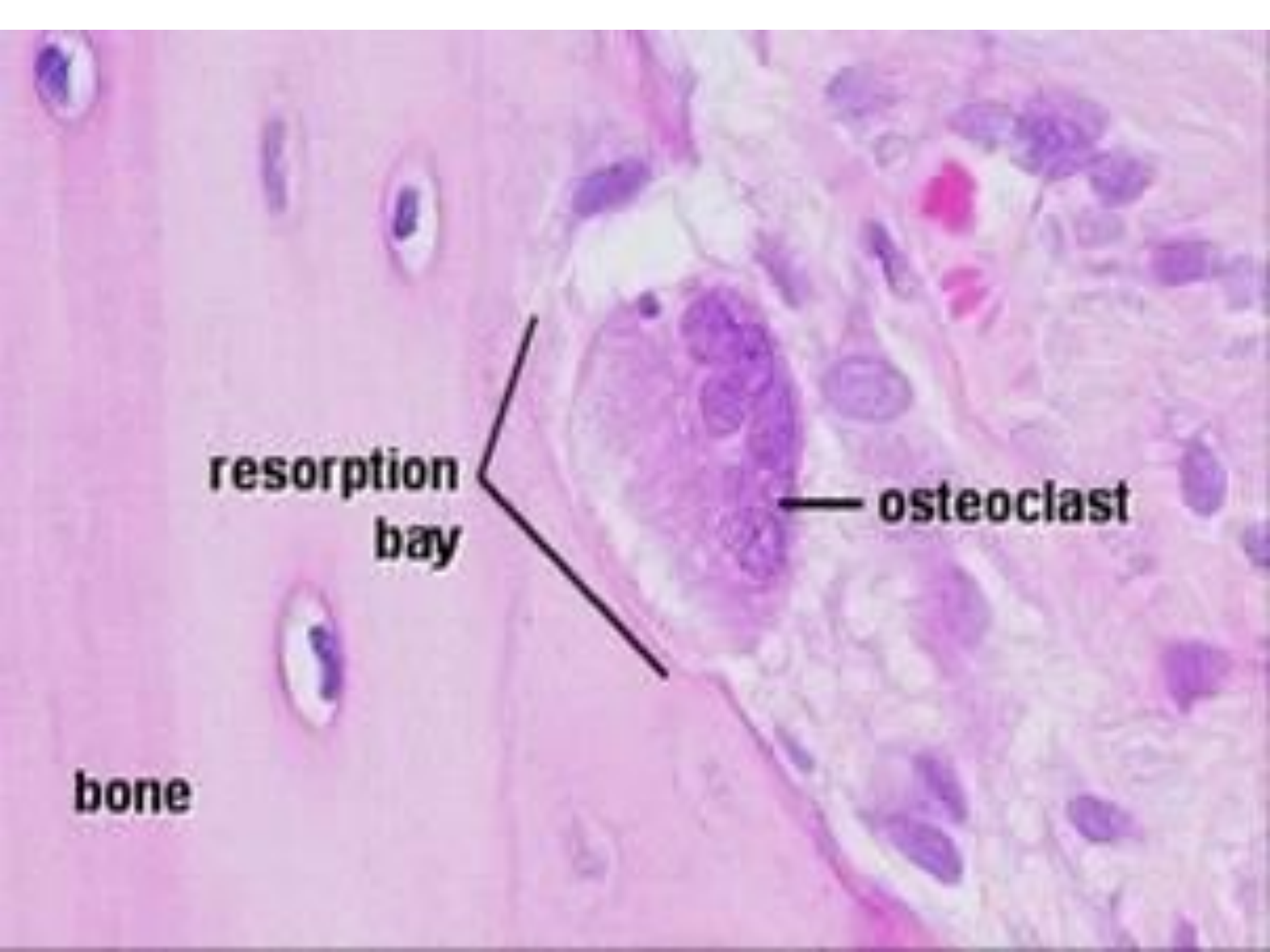


gty.im/
128570402

By
BIOPHOTO
ASSOCIATES

single Osteon

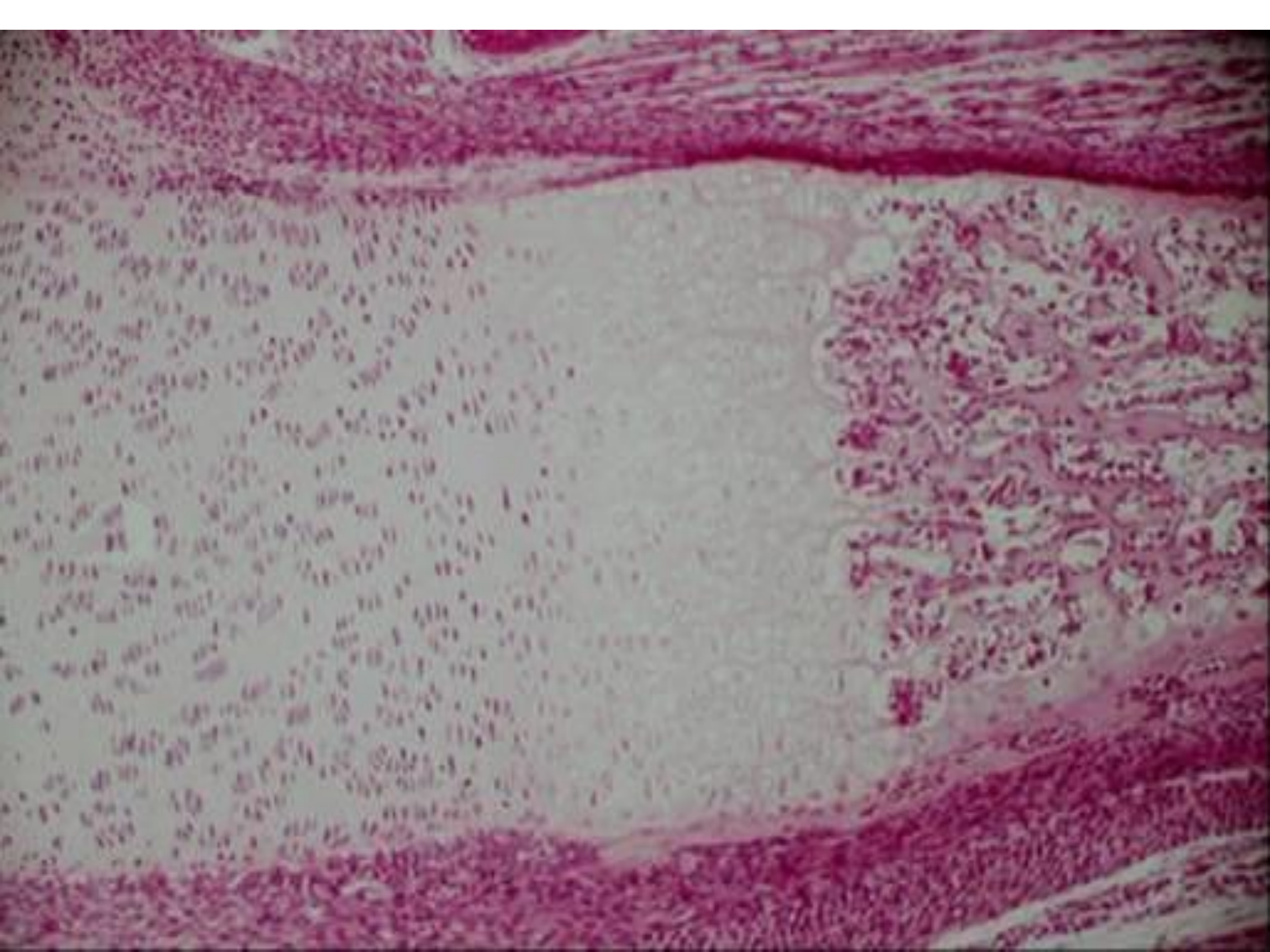


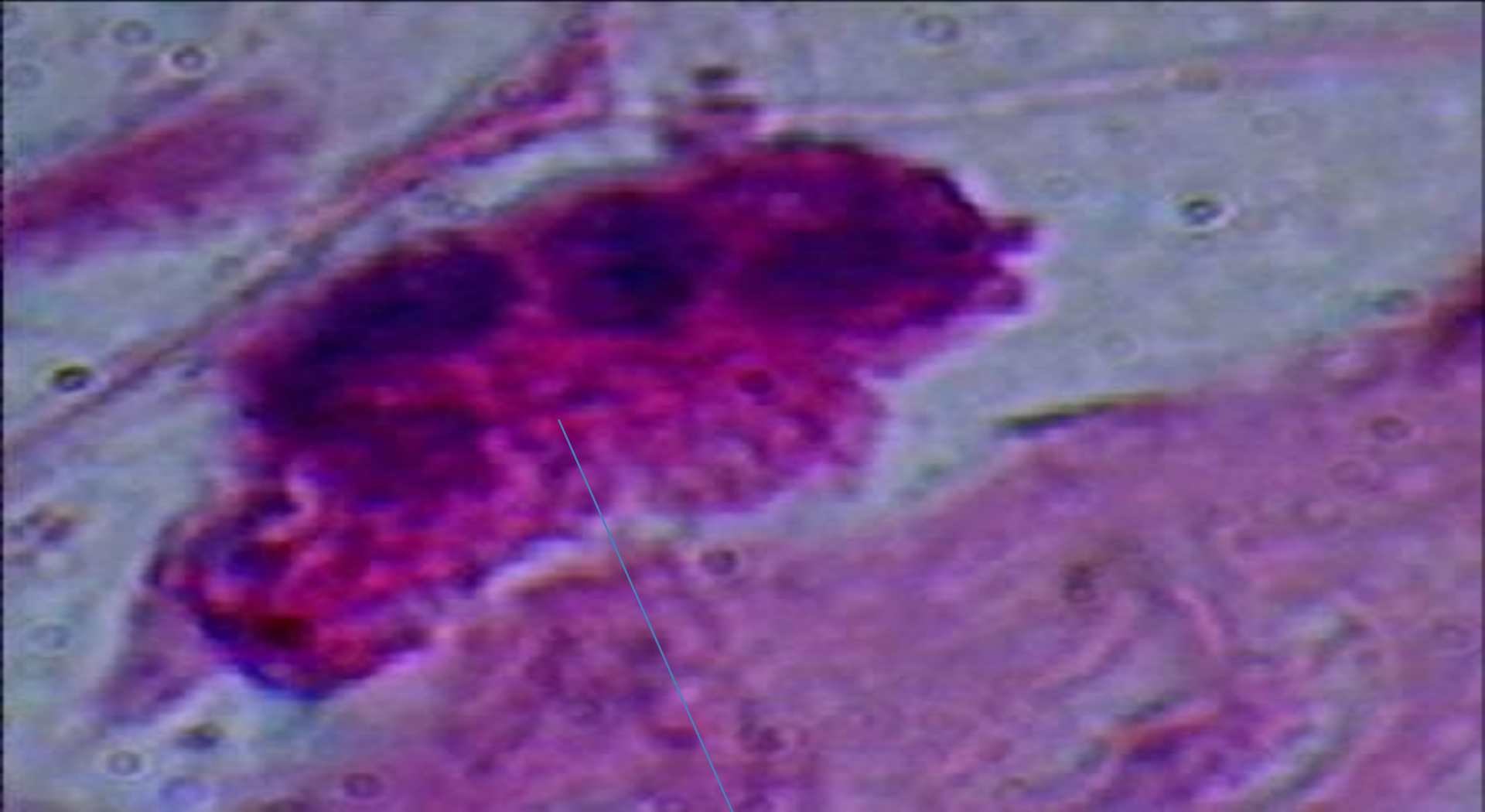


**resorption
bay**

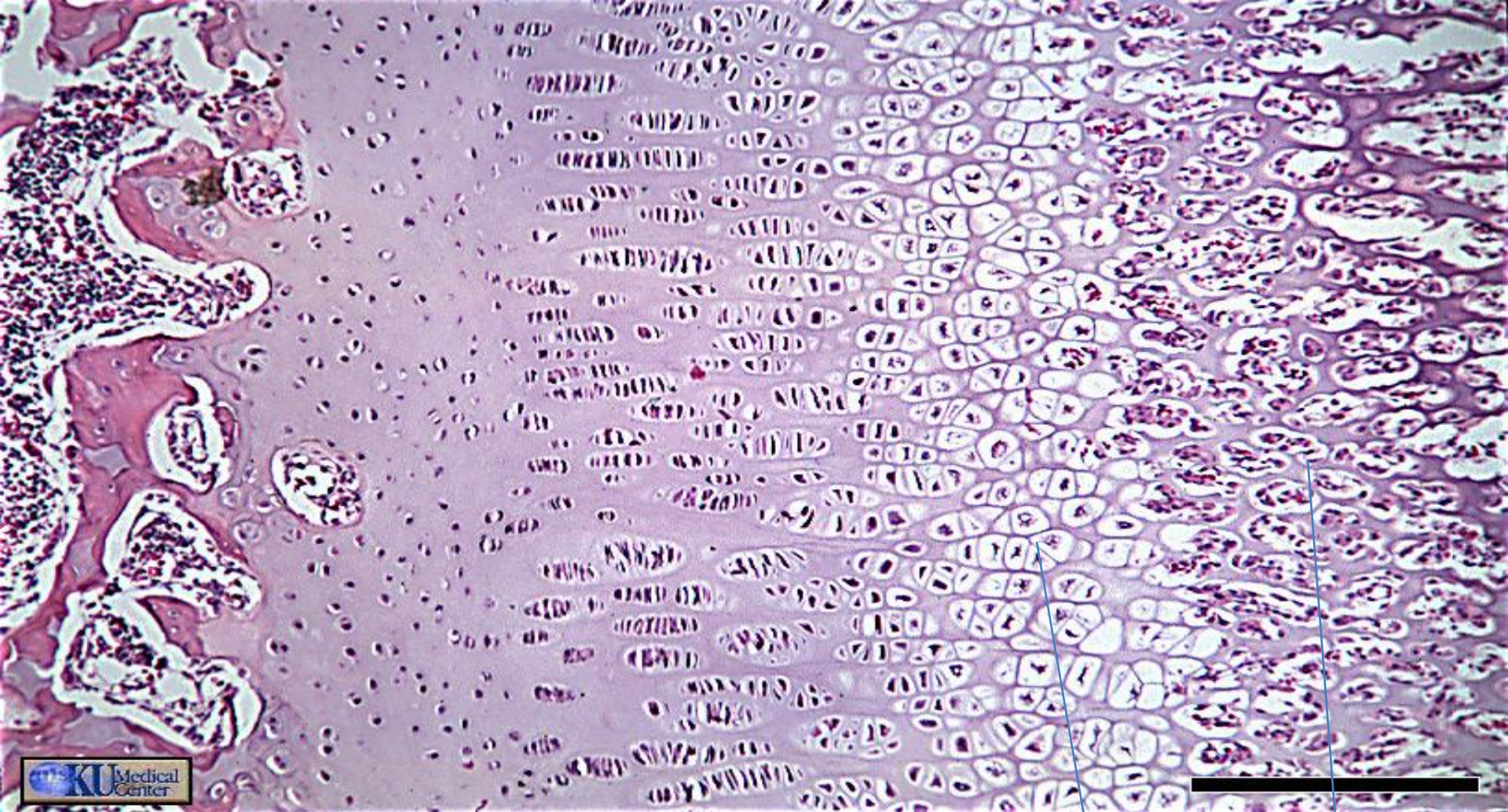
osteoclast

bone



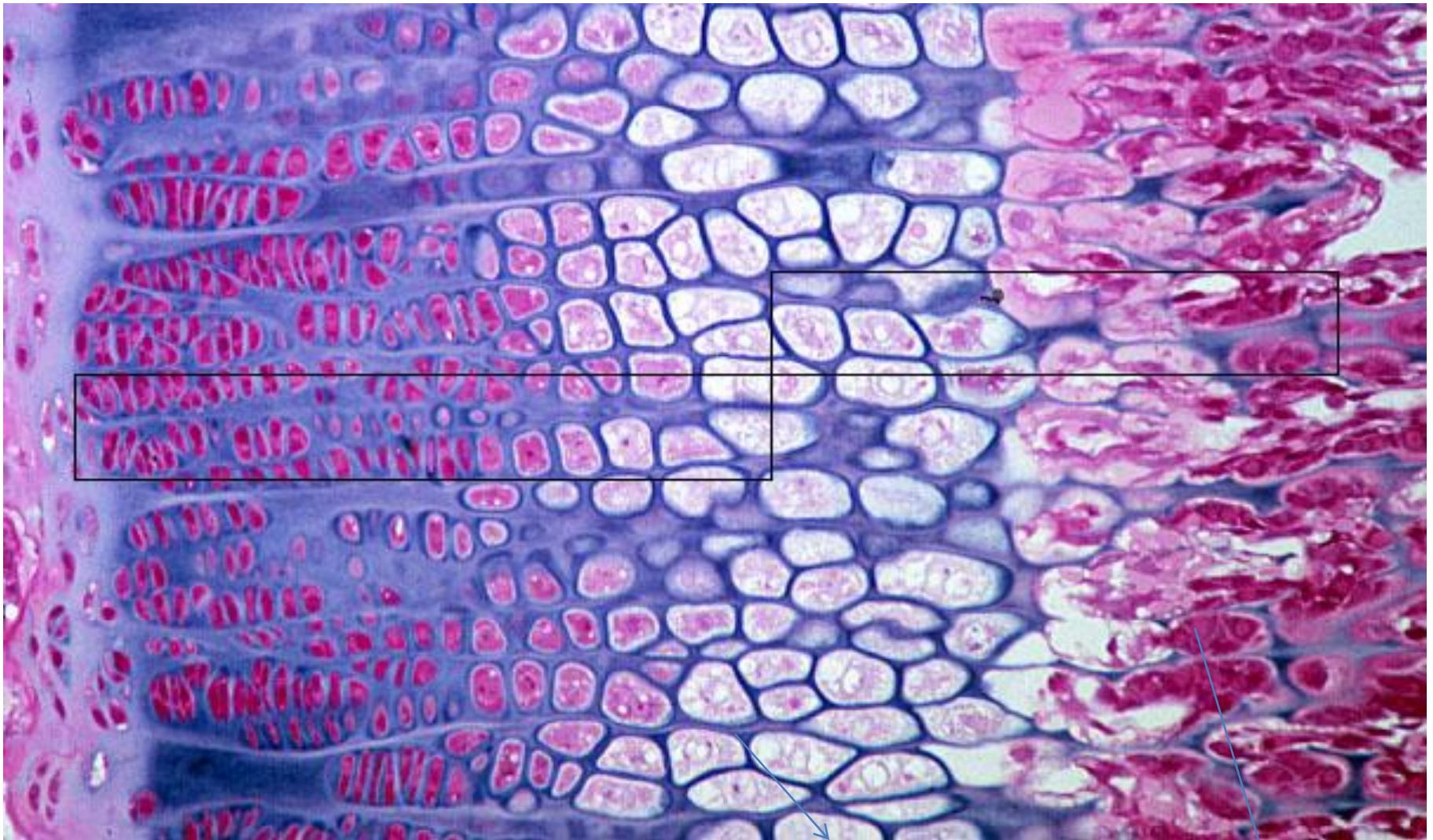


. Osteoclasts



- Calcification and degeneration

- Ossification zone.



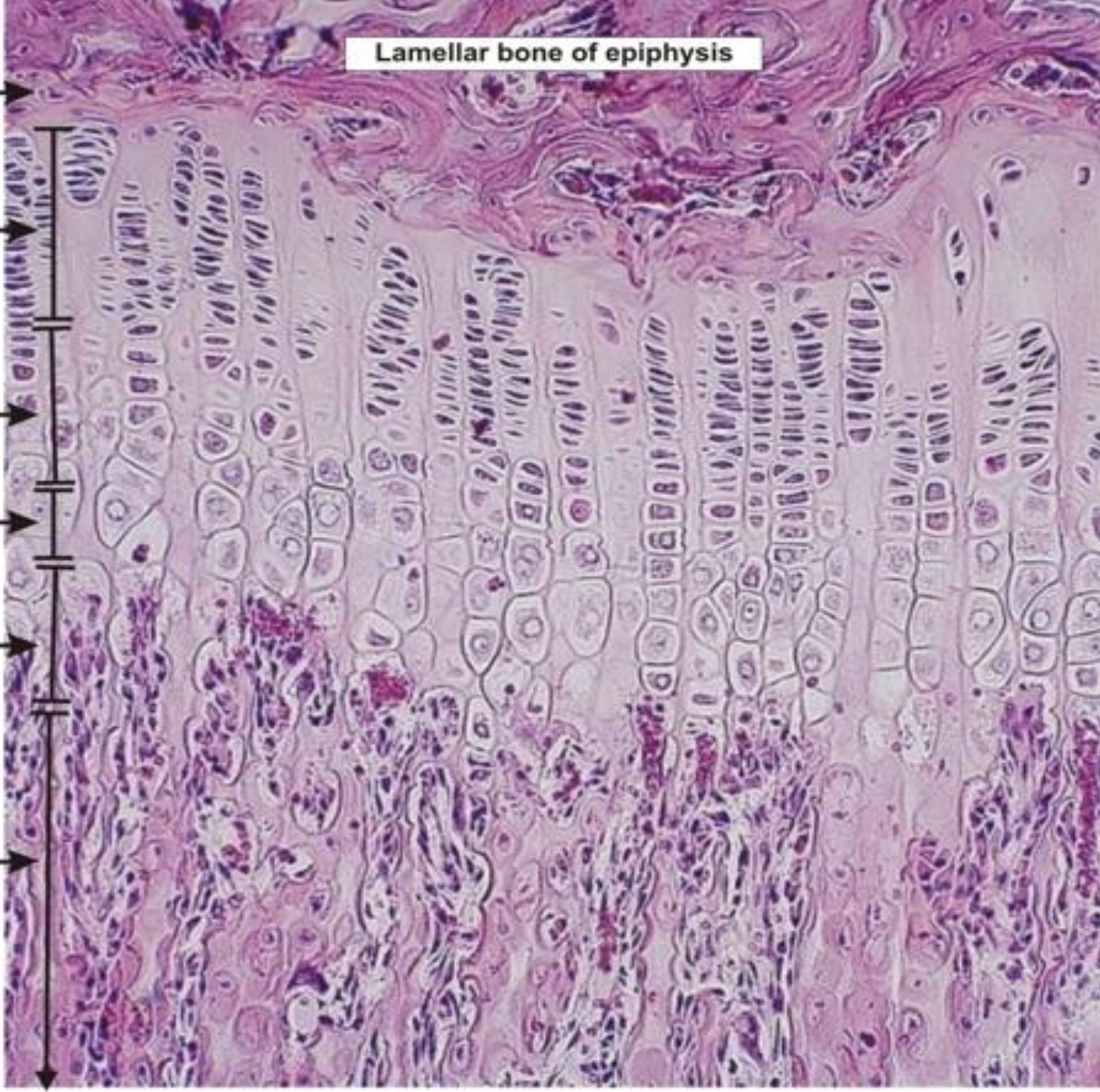
Epephysial plate

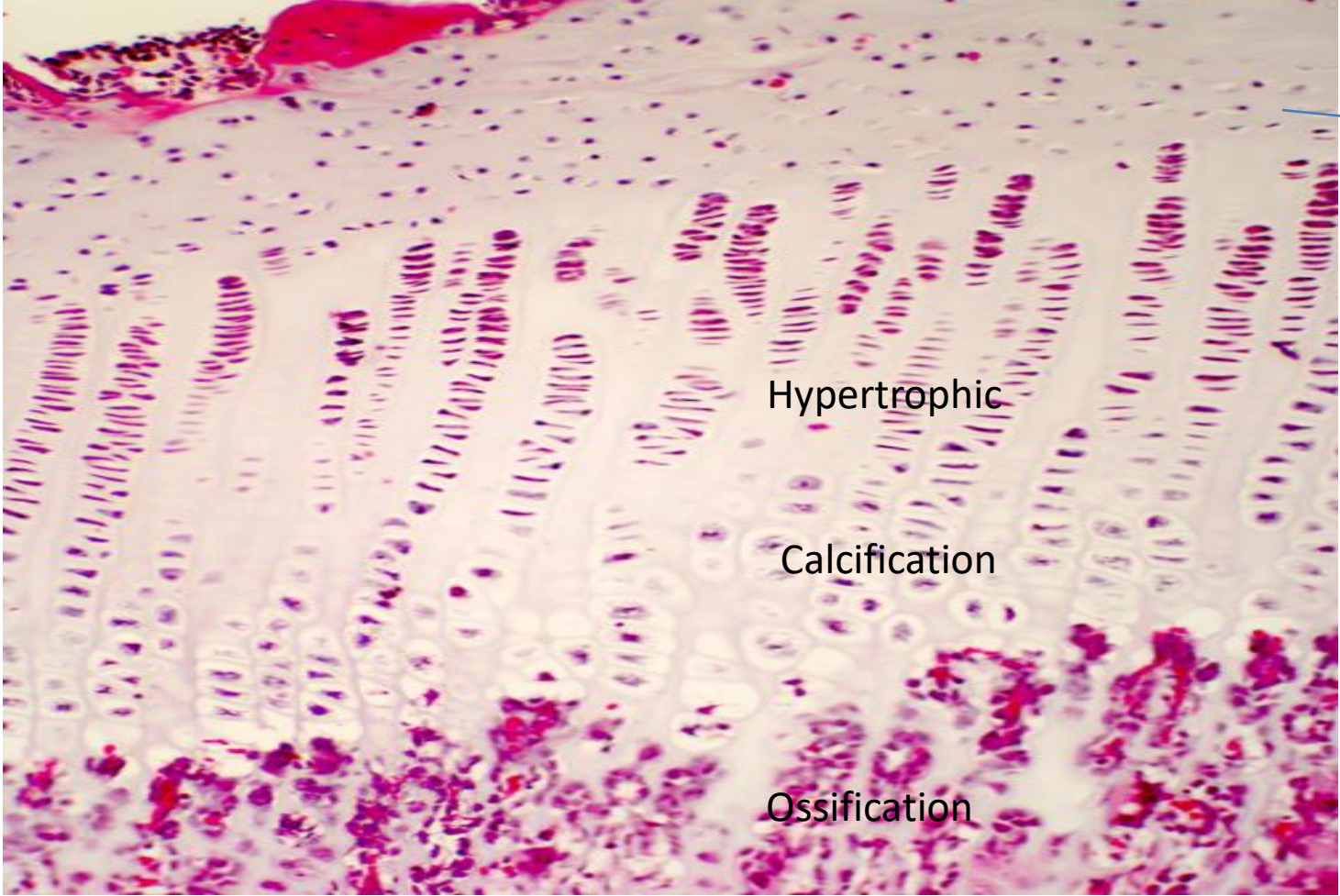
- Calcification
and
degeneration

- Ossification zone.

Lamellar bone of epiphysis

- Resting cartilage
- Zone of proliferating chondrocytes
- Zone of chondrocyte hypertrophy
- Zone of cell death
- Zone of vascular invasion
- Zone of mixed spicules





Hypertrophic

Calcification

Ossification

Proliferation

