

Emberiology

final

archive



The Palatine tonsils of the male is?

Select one:

a. Endoderm

b. Mesoderm

c. Ectoderm

d. Exoderm

e. Hypoderm

What is the gastrulation?

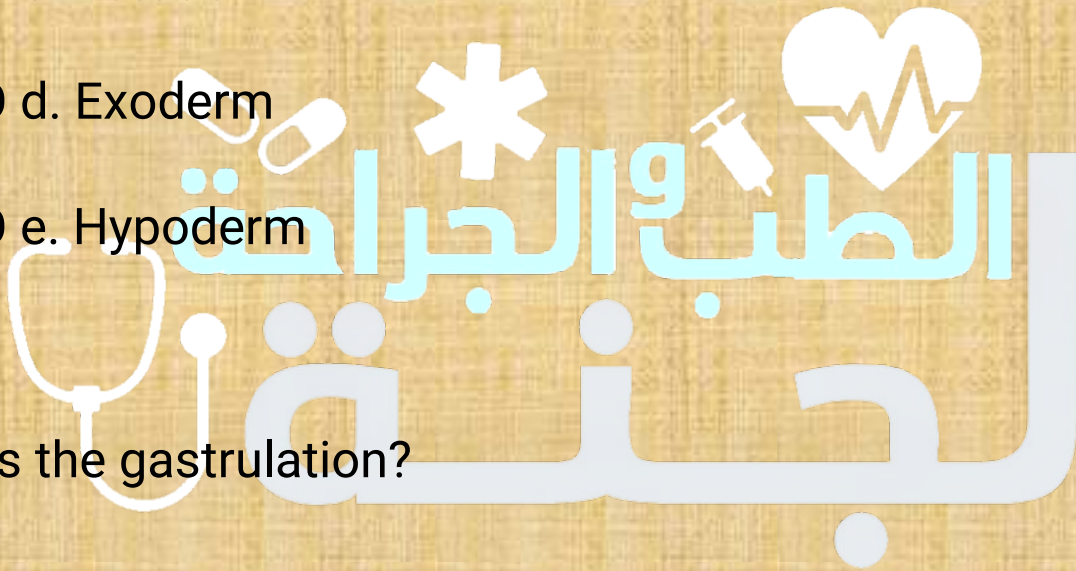
Select one:

a. Embryo after fertilization

b. Embryo before implantation

c. Embryo in the third week

d. Embryo in the first week



◦ e. Embryo in the second week

Intraembryonic mesoderm is separated from ectoderm and endoderm?

Select one:

a. The 21st day

b. The 14th day

c. The 17th day

d. The 22nd day

e. The 16th day

The prostatic gland is?

Select one:

a. Endoderm

b. Mesoderm

c. Ectoderm

d. Exoderm

e. Hypoderm

Cells of the primitive streak proliferate and migrate?

Select one:

a. Cranial

b. third directions

c. Caudal

d. Ventral

e. Dorsal

Which hormone stimulate the development of the breast?



Select one:

- a. Human chorionic gonadotrophic hormone
- b. Human Chorionic corticotrophin hormone
- c. Human Chorionic thyrotrophin hormone
- d. Human Chorionic somatotrophin hormone
- e. Estrogen and progesterone hormones

Persistence of the vitellointestinal duct, meaning?

Select one:

- a. Vitelline fistula
- b. Meckel's diverticulum
- c. Fibrous band

d. Viteline cyst

e. Vitelline sinus

Intraembryonic mesoderm is developed from?

Select one:

a. Primitive stroke

b. Primitive notochord

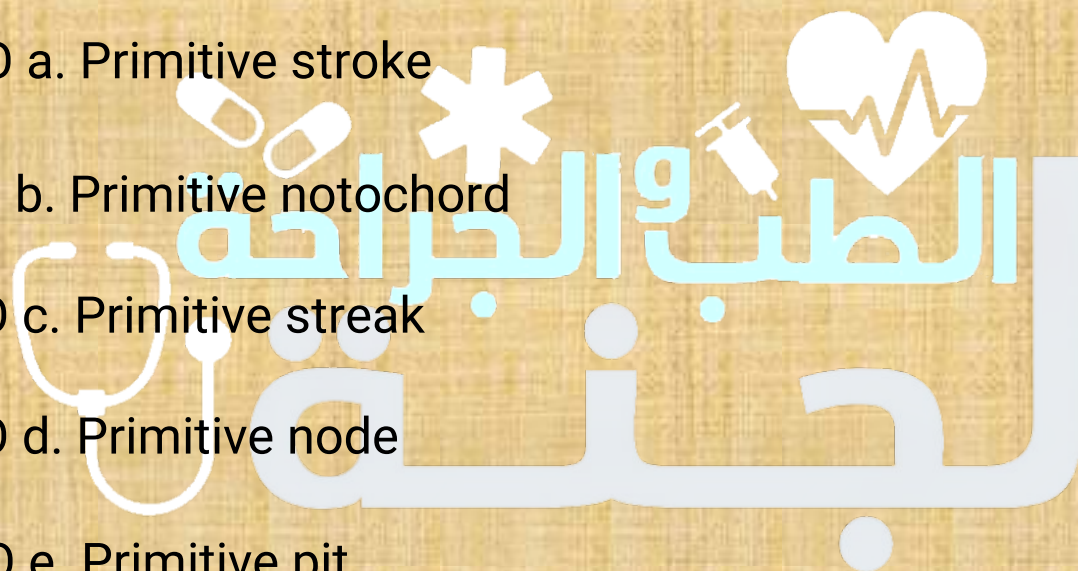
c. Primitive streak

d. Primitive node

e. Primitive pit

The epiblast of the male is?

Select one:



a. Endoderm

b. Mesoderm

c. Ectoderm

d. Exoderm

e. Hypoderm

Exocoelomic cyst is part of?

Select one:

a. Endoderm

b. Mesoderm

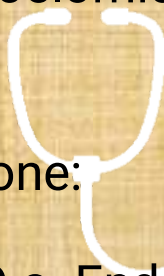
c. Ectoderm

d. Exoderm

e. Hypoderm



الطب والبرائة



لجنة

The cervix of the uterus is developed from?

Select one:

a. Intermediate part of somite

b. Lateral mesoderm

c. Ventromedial part of somite

d. Intermediate mesoderm

e. Dorsolateral part of somite

The middle part of ureter is developed from?

Select one:

a. Intermediate part of somite

b. Lateral mesoderm

c. Ventromedial part of somite



d. Intermediate mesoderm

e. Dorsolateral part of somite

How many septa in placenta?

Select one:

a. 15-20

b. 16-21

c. 14-19

d. 15-19

e. 14-20

How many vessels in the definitive umbilical cord?

Select one:

a. Three



b. Five

c. TWO

d. Four

e. One

The source of the notochord is?

Select one:

a. Hansen's membrane

b. Primitive node

c. Amniotic cavity

d. Primitive streak

e. Prechordal plate

The lacrimal gland is?



Select one:

a. Endoderm

b. Mesoderm

c. Ectoderm

d. Exoderm

e. Hypoderm

Function of neuroenteric canal?

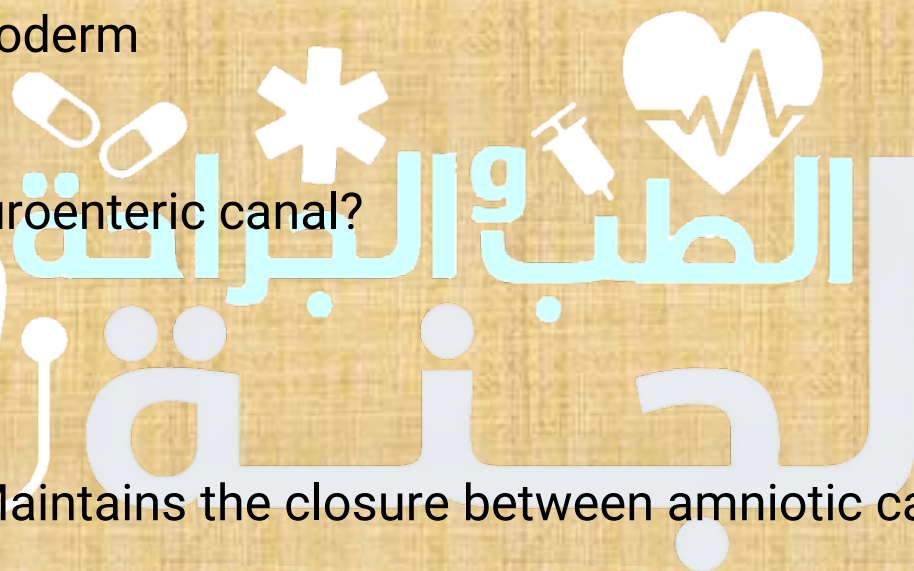
Select one:

a. Maintains the closure between amniotic cavity and yolk sac

b. Maintains the drainage of amniotic cavity

c. Maintains the pressure between amniotic cavity and yolk sac

d. Maintains the drainage of yolk sac



o e. Maintains the connection between amniotic cavity and yolk

sac

All following are composition of amniotic fluid except?

Select one:

a. Protein

b. Turbid water

c. Fat

d. Carbohydrate

e. Salts

The thyroid gland is?

Select one:

- a. Endoderm
- b. Mesoderm
- c. Ectoderm
- d. Exoderm
- e. Hypoderm

All following are functions of amniotic fluid except?

Select one:

- a. Dilatation of the cervix of the uterus
- b. Facilitates delivery of the fetus
- c. Prevents adhesion of the parts of the fetus
- d. Protection of the fetus against internal trauma
- e. Development of suckling reflex

The last cervical vertebrae is developed from?

Select one:

- a. Intermediate part of somite
- b. Lateral mesoderm
- c. Ventromedial part of somite
- d. Intermediate mesoderm
- e. Dorsolateral part of somite

The spermatogonia cells reach the testis at?

Select one:

- a. The 3rd week
- b. The 4th day
- c. The 5th day
- d. The 1st week

e. The 4th week

Prechordal plate is?

Select one:

a. Endoderm

b. Mesoderm

c. Ectoderm

d. Smooth muscle

e. Smooth muscle

One amniotic cavity and one placenta, meaning?

Select one:

a. Diamniotic / dichorionic twins

b. Monoamniotic / dichorionic twins

c. Diamniotic / monochorionic twins

d. Conjoined twins

e. Monoamniotic / monochorionic twins

The first rib is developed from?

Select one:

a. Intermediate part of somite

b. Lateral mesoderm

c. Ventromedial part of somite

d. Intermediate mesoderm

e. Dorsolateral part of somite

The spermatogonia cells reach the testis at?

Select one:

a. The 3rd week



- b. The 4th day
- c. The 5th day
- d. The 1st week
- e. The 4th week

The placenta penetrates the uterine wall and attaches to the ureter, called?

Select one:

- a. Placenta accreta
  - b. Placenta praevia centralis
  - c. Placenta increta
  - d. Placenta praevia marginalis
  - e. Placenta percreta
- The notochord is stopped at?

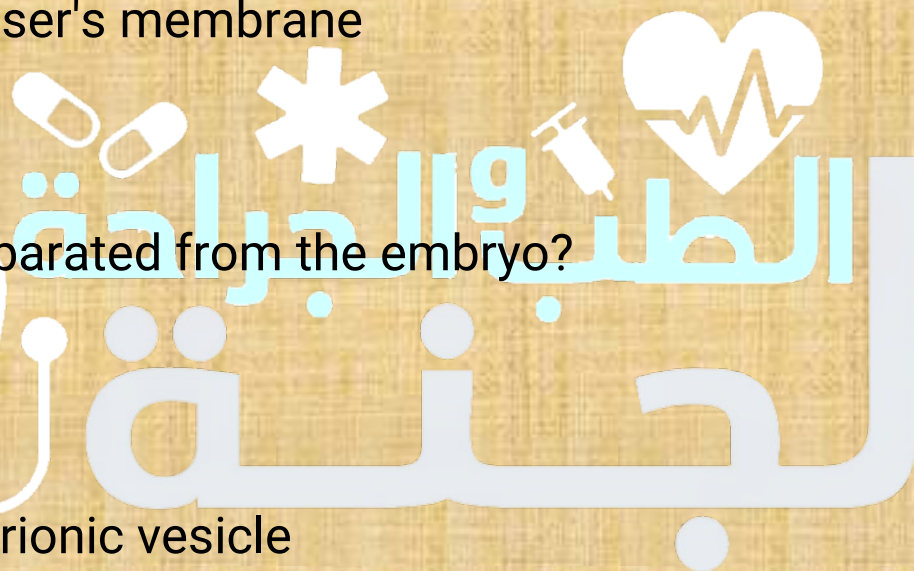
Select one:

- a. Buccolaryngeal membrane
- b. Prechordal sac
- c. Cloacal membrane
- d. Prechordal plate
- e. Heuser's membrane

Which part separated from the embryo?

Select one:

- a. Chorionic vesicle
- b. Primitive yolk sac
- c. Blastocyst
- d. Secondary yolk sac
- e. Definitive yolk sac



The ciliary ganglia is related to?

Select one:

- a. The 3rd cranial nerve
- b. The 9th cranial nerve
- c. The 7th cranial nerve
- d. The 5th cranial nerve
- e. The 10th cranial nerve

The pancreatic gland is?

Select one:

- a. Endoderm
- b. Mesoderm
- c. Ectoderm

d. Exoderm

e. Hypoderm

Formation of blastocyst?

Select one:

a. The 15th day

b. The 4th day

c. The 7th day

d. The 5th day

e. The 14th day

Which hormone important for maintaining growth of the corpus luteum?

Select one:



a. Human chorionic gonadotrophic hormone

b. Human Chorionic cortico trophin hormone

c. Human Chorionic thyro trophin hormone

d. Human Chorionic somato mammo-trophin hormone

e. Human Estrogen hormones

The right ovary is developed from?

Select one:

a. Intermediate part of somite

b. Lateral mesoderm

c. Ventromedial part of somite

d. Intermediate mesoderm

e. Dorsolateral part of somite

Folding of the embryo begins at?

Select one:

- a. The 14th day
- b. The 7th day
- c. The 17th day
- d. The 5th day
- e. The 21st day

The pancreatic gland is?

Select one:

- a. Endoderm
- b. Mesoderm
- c. Ectoderm
- d. Exoderm
- e. Hypoderm



The amnioblast of the male is?

Select one:

a. Endoderm

b. Mesoderm

c. Ectoderm

d. Exoderm

e. Hypoderm

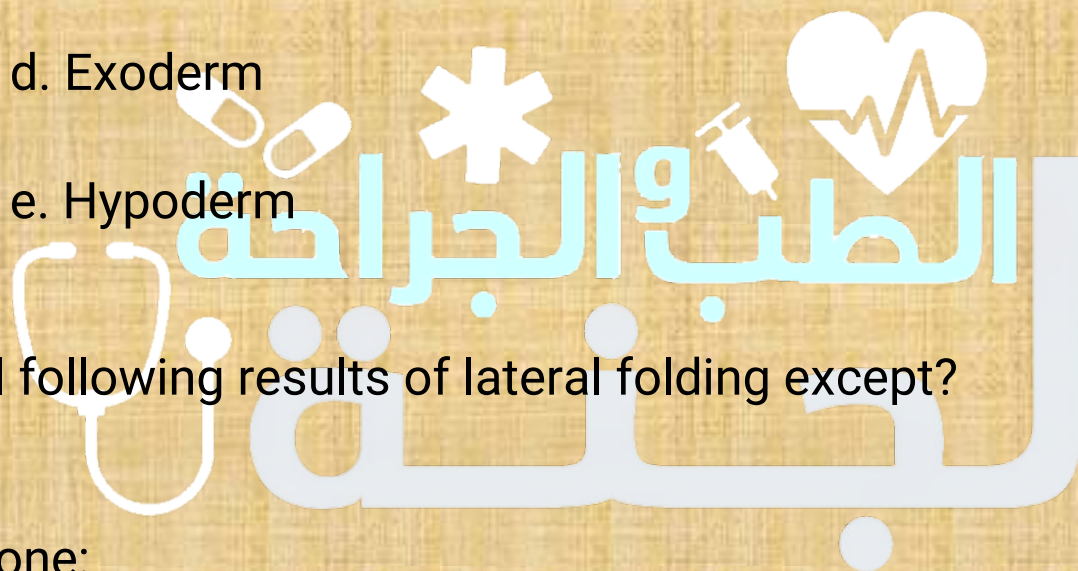
All following results of lateral folding except?

Select one:

a. The part of the gut is called midgut

b. Formation of a single peritoneal cavity

c. The intermediate mesoderm becomes caudal to the peritoneal cavity



- d. The embryo becomes cylindrical in shape
- e. The gut connecting to the dorsal wall of the embryo by dorsal mesentery

Formation of blastocyst?

Select one:

- a. The 15th day
- b. The 4th day
- c. The 7th day
- d. The 5th day

◦ e. The 14th day  
The neural crest lies?

Select one:





- a. Dorsal to neural tube
- b. Ventral to neural tube
- c. Lateral to neural tube
- d. Dorsolateral to neural tube
- e. Caudal to neural tube

Pectoralis major muscle is developed from?

Select one:

- a. Intermediate part of somite
- b. Lateral mesoderm
- c. Ventromedial part of somite
- d. Intermediate mesoderm
- e. Dorsolateral part of somite

Urachal fistula, meaning?

Select one:

a. Persistence of the middle

part

b. Obliteration of urachus

c. Persistence of the distal end

d. Persistent of the urachus

e. persistence of the proximal

part

The Lower 1/2 of the anal canal is?

Select one:

a. Endoderm

- b. Mesoderm
- c. Ectoderm
- d. Exoderm
- e. Hypoderm

All characters of Primary chorionic villi except?

Select one:

- a. The villi are separated from each other by lacunae
- b. The syncytiotrophoblasts form finger-like projections
- c. Lacunae appeared at embryonic pole of the disc
- d. Lacuna filled with maternal



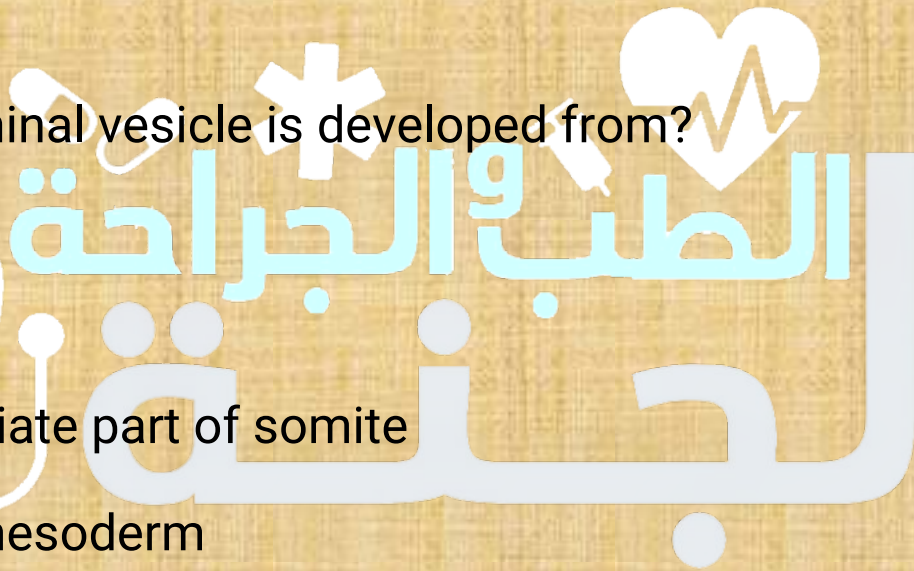
blood due to erosion of the uterine vessels by syncytiotrophoblasts

o e. The cytotrophoblasts migrate into center of the lacuna

The right seminal vesicle is developed from?

Select one:

- a. Intermediate part of somite
- b. Lateral mesoderm
- c. Ventromedial part of somite
- d. Intermediate mesoderm
- e. Dorsolateral part of somite



The first stage of development of notochord is?

Select one:

- a. Notochordal canal
- b. Definitive notochord
- c. Neuroenteric canal
- d. Primitive pit
- e. Primitive notochord

All following results of folding except?

Select one:

- a. Vitellointestinal duct in the



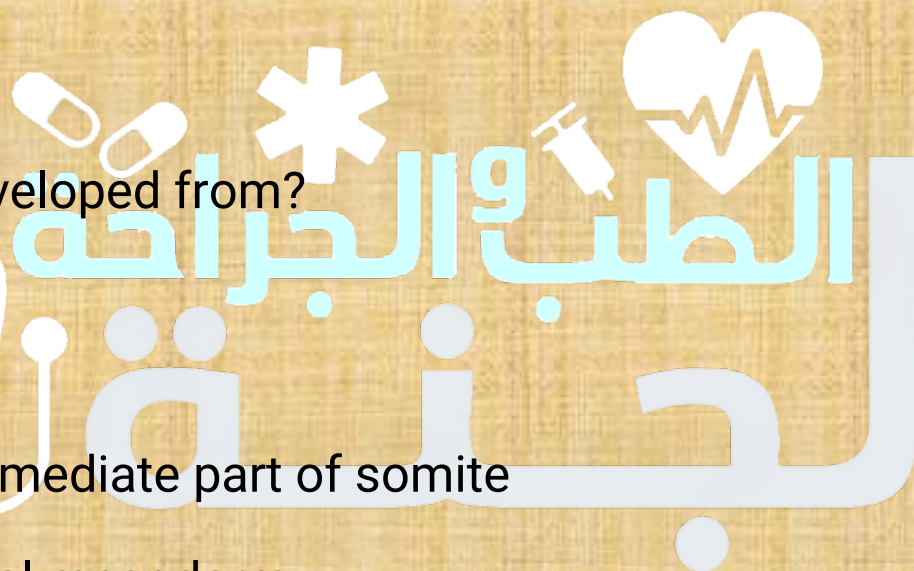
umbilical ring

- b. The embryo becomes cylindrical in shape
- c. The point of meeting of the folds is the umbilical ring
- d. The embryo is surrounded by the amniotic cavity
- e. Part inside the embryo forming the definitive gut

Tongue is developed from?

Select one:

- a. Intermediate part of somite
  - b. Lateral mesoderm
  - c. Ventromedial part of somite
  - d. Intermediate mesoderm
  - e. Dorsolateral part of somite
- The Eustachian tube is?



Select one:

a. Endoderm

b. Mesoderm

c. Ectoderm

d. Exoderm

e. Hypoderm

Hansen's node is?

Select one:

a. Endoderm

b. Mesoderm

c. Ectoderm

d. Smooth muscle



e. Mucus membrane

Chromosol analysis used to detect?

select one:

a. Rh incompatibility

b. Respiratory distress

c. Early congenital anomalies

d. Neural tube defect

e. Hemolysis of blood

How many layers of placental barrier in the 8th month?

Select one:

a. Two

b. Three



c. Four

d. Five

e. Six

Primitive streak is?

Select one:

a. Endoderm

b. Mesoderm

c. Ectoderm

d. Smooth muscle

e. Mucus membrane

Closure of notochordal canal by?



Select one:

- a. The cells of the medial of the notochordal canal
- b. The cells of the roof of the notochordal canal
- C. The cells of the lateral of the notochordal canal
- d. The cells of the median of the notochordal canal
- e. The cells of the floor of the notochordal canal

Choose the correct statement?

Select one:

- a. Cloacal membrane is caudal to primitive streak
- b. The embryo is pear shaped at the beginning of the 3rd week
- c. Prechordal plate is cranial to primitive streak
- d. Primitive streak is developed at the middle of the caudal half of embryo
- e. Primitive streak is ectoderm

There is connection between amniotic cavity and yolk sac by?

Select one:

- a. Notochordal canal
- b. Definitive notochord
- c. Neuroenteric canal
- d. Primitive canal
- e. Primitive notochord

The parietal layer of pleura is developed from?

Select one:

- a. Intermediate part of somite
- b. Lateral mesoderm
- c. Ventromedial part of somite

- d. Intermediate mesoderm
- e. Dorsolateral part of somite

The epididymis is developed from?

Select one:

- a. Intermediate part of somite
- b. Lateral mesoderm
- c. Ventromedial part of somite
- d. Intermediate mesoderm
- e. Dorsolateral part of somite

Primitive pit starts?

Select one:

- a. Cranial
- b. Deep

c. Ventral

d. Caudal

e. Dorsal

The mucous membrane of the tongue is?

Select one:

a. Endoderm

b. Mesoderm

c. Ectoderm

d. Exoderm

e. Hypoderm



إعداد لجنة الطب والجراحة  
(عمر سعدي)

